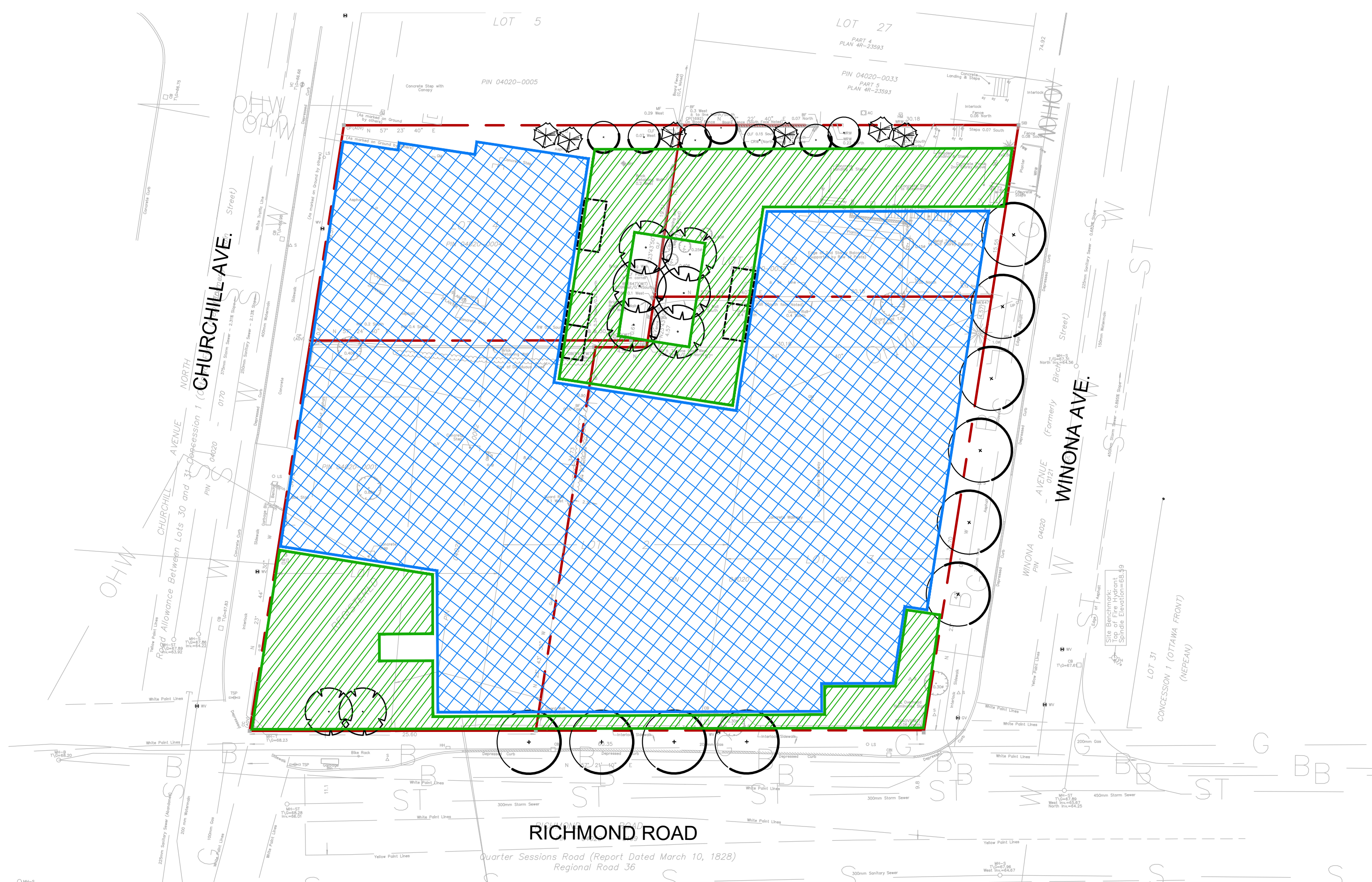


1 EXISTING SITE

Scale: 1:300



2 PROPOSED DEVELOPMENT

Scale: 1:300

Tree #	Botanical Name	Common Name	Caliper (cm)	Condition	High Quality Tree	Rare Tree	Comments	Disposition
1	Ulmus pumila	Siberian Elm	41	Good	No	No	Privately owned, Symmetrical canopy, Single stem, Co-dominant leaders: 2 @ ~3m above grade, Die back ~5% @ branches	Remove
2	Group: Acer negundo / Rhamnus carthartica	Group: Manitoba Maple / Common Buckthorn	<10	Moderate	No	No	Privately owned, Row of volunteer Manitoba Maple & Common Buckthorn along property line.	Remove
3	Acer negundo	Manitoba Maple	12 to 15	Poor	No	No	Privately owned, Asymmetrical canopy, Multi-stem, Pruned, Broken limbs, included bark, Asphalt paving over CRZ.	Remove
4	Acer negundo	Manitoba Maple	10 to 15	Moderate	No	No	Privately owned, Asymmetrical canopy, Multi-stem, Broken limbs.	Remove
5	Acer negundo	Manitoba Maple	30	Poor	No	No	Privately owned, Asymmetrical canopy, Single stem, Pruned leader, Broken limbs, Heart rot & Bark rot @ trunk.	Remove
6	Acer negundo	Manitoba Maple	25, 31, 39	Moderate	No	No	Privately owned, Asymmetrical canopy, Single stem, Co-dominant leaders: 3 @ ~1m above grade, leaning, bark damage @ leader.	Remove
7	Gleditsia triacanthos	Honey Locust	33	Good	No	No	Privately owned, Symmetrical canopy, Single stem, Bark rot @ trunk.	Remove
8	Gleditsia triacanthos	Honey Locust	32	Moderate	No	No	City owned, Symmetrical canopy, Single stem, Co-dominant leaders: 3 @ ~2.5m above grade, Tree guard grown into trunk.	Remove
9				Missing				
10	Quercus robur 'Fastigiata'	Pyramidal English Oak	65	Good	Yes	No	Privately owned, Symmetrical canopy, Single stem, Bark rot @ trunk.	Remove
11	Acer negundo	Manitoba Maple	22	Poor	No	No	Privately owned, Asymmetrical canopy, Single stem, Leaning, Broken limbs, Bark damage.	Remove
12	Ulmus pumila	Siberian Elm	18	Moderate	No	No	Privately owned, Symmetrical canopy, Single stem.	Remove
13	Acer negundo	Manitoba Maple	24	Moderate	No	No	Privately owned, Asymmetrical canopy, Single stem, Poor branch angle.	Remove
14	Picea glauca	White Spruce	15	Poor	No	No	Private property, Asymmetrical canopy, Single stem, 70% die-back @ canopy.	Remove
15	Acer negundo	Manitoba Maple	32	Moderate	No	No	Private property, Asymmetrical canopy, Single stem, Leaning	Remove
16				Dead				
17	Acer negundo	Manitoba Maple	25	Moderate	No	No	Privately owned, Asymmetrical canopy, Single stem, Grown into chain link fence	Remove
18	Acer negundo	Manitoba Maple	28	Moderate	No	No	Privately owned, Asymmetrical canopy, Single stem, Leaning, Grown into chain link fence.	Remove
19	Acer negundo	Manitoba Maple	24	Moderate	No	No	Privately owned, Asymmetrical canopy, Single stem.	Remove
20	Acer saccharum	Sugar Maple	36	Good	No	No	Private property, Asymmetrical canopy, Single stem, Co-dominant leaders: 2 @ 1.5m above grade, Broken limbs,	Remove
21	Picea glauca	White Spruce	20	Good	No	No	Privately owned, Symmetrical canopy, Single stem, Existing feature: lumber fastened to trunk.	Remove
22	Thuja occidentalis	Eastern White Cedar	36	Good	No	No	Privately owned, Symmetrical canopy, Single stem, Existing feature: lumber fastened to trunk.	Remove
23	Picea pungens	Colorado Spruce	32, 28	Moderate	No	No	Privately owned, Asymmetrical canopy, Single stem, Co-dominant leader: 2 @ 0.1m above grade, Pruned @ hydro.	Remove

NOTES:

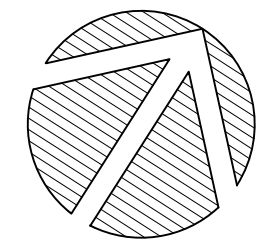
- THIS TREE CONSERVATION REPORT HAS BEEN PREPARED AS PART OF A SITE PLAN CONTROL APPLICATION FOR THE RE-DEVELOPMENT OF THE INDICATED SITE.
 - THE EXISTING SITE CONTAINS FOUR PROPERTIES: TWO LOCATED ALONG RICHMOND ROAD (#325 / #327 & #319), ONE ON CHURCHILL AVE. (#381), AND ONE ON WINONA AVE (#380). THREE COMMERCIAL BUILDINGS ARE LOCATED ALONG RICHMOND ROAD. A MULTI-UNIT RESIDENTIAL BUILDING IS LOCATED ALONG CHURCHILL AVE, AND A SINGLE-FAMILY RESIDENTIAL BUILDING IS LOCATED ON WINONA AVE. APPROXIMATELY 645m² IS OCCUPIED BY BUILDING FOOTPRINTS.
 - THE SITE CONTAINS ASPHALT PARKING AREAS. APPROXIMATELY 2450m² IS HARD SURFACES.
- THERE ARE A TOTAL OF TWENTY-THREE (23) EXISTING TREES INCLUDED IN THE TREE CONSERVATION REPORT, IN VARYING CONDITIONS. THE MAJORITY OF TREES ARE LOCATED WITHIN THE SITE BOUNDARY, WITH ONE LOCATED WITHIN THE CITY ROW. TREES LOCATED ALONG THE NORTHERN PROPERTY LINE OF #325, #327, & #319 RICHMOND ROAD ARE PRIMARILY VOLUNTEER ACER NEGUNDO.
- THE PROPOSED DEVELOPMENT REQUIRES THE REMOVAL OF TWENTY-THREE (23) TREES.
- THE PROPOSED DEVELOPMENT WILL INCLUDE THIRTY-ONE (31) NEW TREES. REFER TO LANDSCAPE PLAN FOR SPECIES LIST.
- THE DEVELOPMENT SITE IS NOT CONSIDERED OF PRIMARY OR SUPPORTING SIGNIFICANCE AS NATURAL LANDS IN THE GREENSPACE MASTER PLAN.

LEGEND

- PROPERTY LINE
- ☼ EXISTING TREES
- 00 TREE IDENTIFICATION NUMBER
- CRITICAL ROOT ZONE
- ✕ TREE TO BE REMOVED
- ⊗ PROPOSED TREE
- ▒ PROPOSED BUILDING
- ▨ PROPOSED HARD SURFACES

1 ISSUED FOR SPA 22 MAY, 2020
No. Revision Date

North: Stamp:



CSW Landscape Architecture
Urban Design
Site Planning
Recreation and Park Planning
Project Management

319 McRae Avenue, Suite 502, Ottawa, Ontario, K1Z 0B9
Tel: (613) 729-4536

- All measurements in millimeters unless specified otherwise. Do not scale drawing. All drawings to be read in conjunction with written specifications.
- Copyright reserved. This drawing is the exclusive property of CSW Landscape Architects Ltd. and shall not be used without the consent thereof.
- This Drawing may not be used for construction until signed by the landscape architect. It is the responsibility of the contractor to:
 - check and verify all dimensions on site;
 - report all errors and/or omissions to the landscape architect;
 - comply with all pertinent codes and by-laws;
 - check and verify locations of all underground services with all local utilities prior to any digging.

Project:
CLV GROUP
327 RICHMOND ROAD

OTTAWA., ONTARIO

Drawing:
TREE CONSERVATION REPORT

Scale: AS SHOWN Date: 22 MAY, 2020

Design By: PG Drawn By: PG

Project Number: 1942-12 Sheet Number: TCR 01