

CHURCHILL AVE

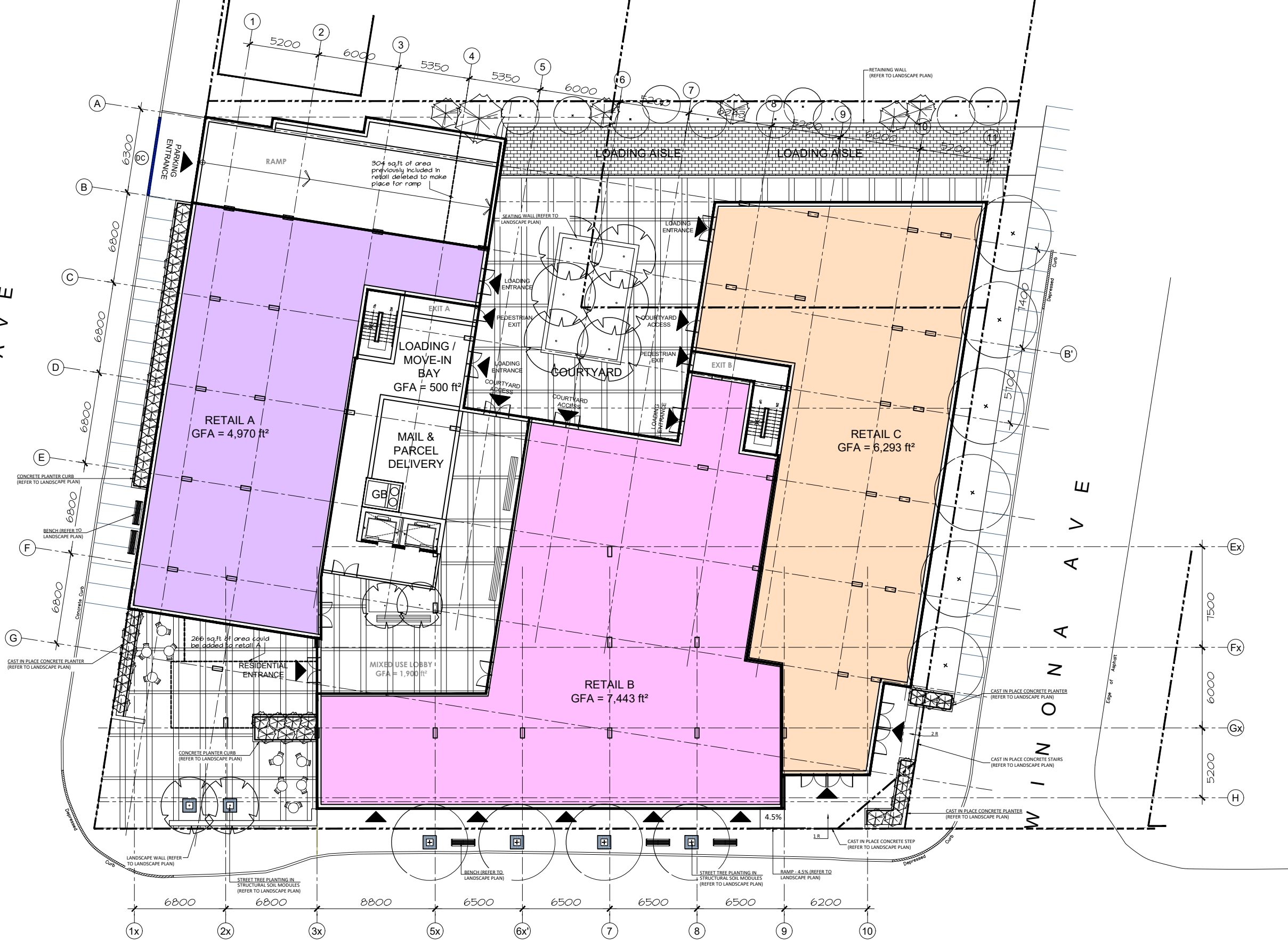
WINONA AVE

**GROUND FLOOR**

GFA = 24,305 ft<sup>2</sup>  
RETAIL = 18,706 ft<sup>2</sup>  
(PREVIOUSLY 19,124 ft<sup>2</sup>)

**PROJECT STATISTICS**

GFA = 180,980 ft<sup>2</sup>  
LEVELS: 9 FLOORS  
184 UNITS  
743 sq.ft. AVERAGE  
126 PARKING SPACES



**319 RICHMOND RD.**

GROUND FLOOR

MAY 14th, 2020

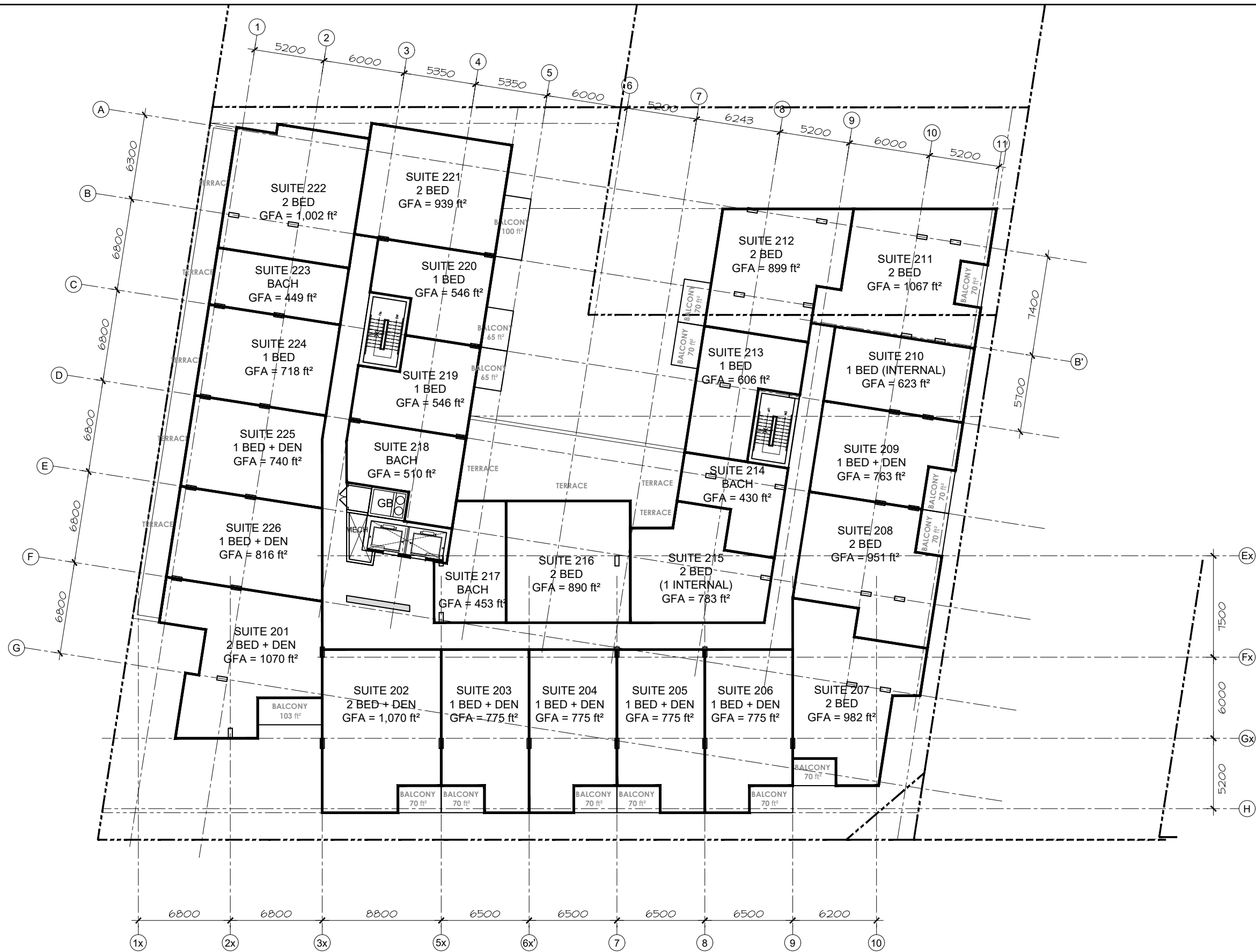
SCALE 1:300



LEVEL 2

GFA = 22,582 ft<sup>2</sup>  
NET = 20,105 ft<sup>2</sup>  
EFF = 89%

26 UNITS



3 1 9 R I C H M O N D R D .

LEVEL 2  
MAY 14th, 2020

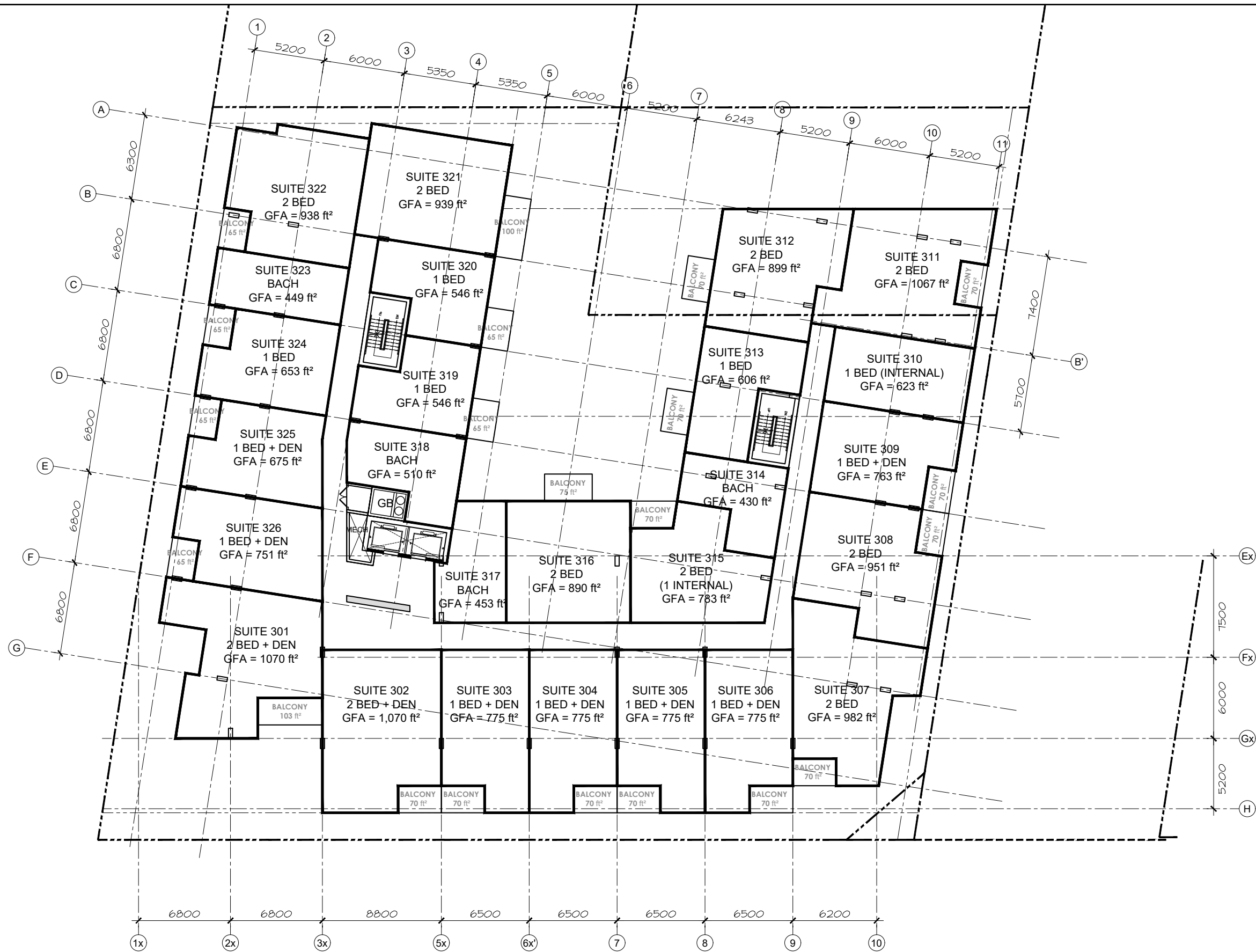
SCALE 1:300



LEVEL 3

GFA = 22,325 ft<sup>2</sup>  
NET = 19,846 ft<sup>2</sup>  
EFF = 89%

26 UNITS



319 RICHMOND RD.

LEVEL 3  
MAY 14th, 2020

SCALE 1:300



LEVEL 4

GFA = 21,341 ft<sup>2</sup>  
NET = 18,795 ft<sup>2</sup>  
EFF = 88%

26 UNITS



319 RICHMOND RD.

LEVEL 4  
MAY 14th, 2020

SCALE 1:300

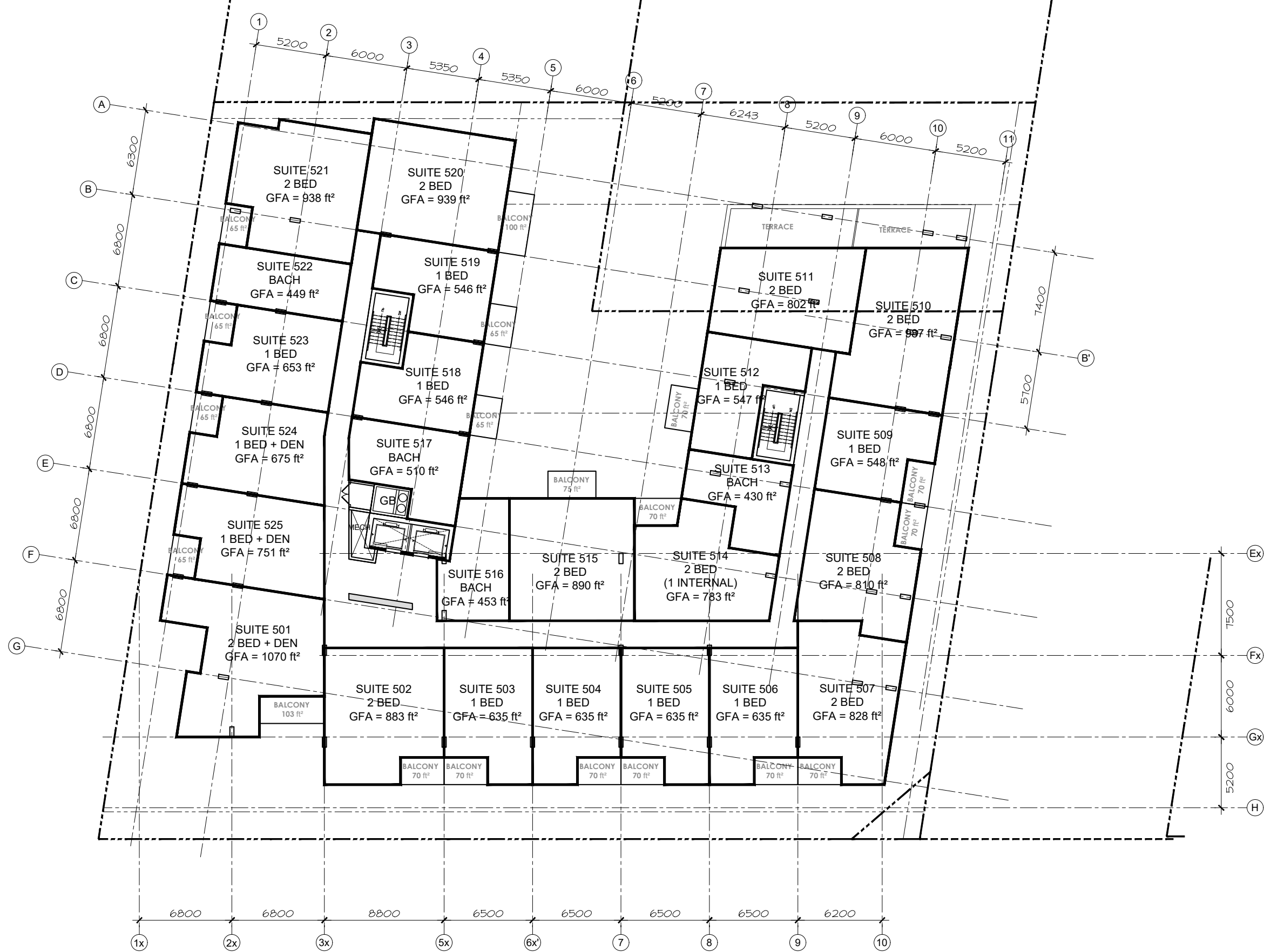




LEVEL 5

GFA = 20,230 ft<sup>2</sup>  
NET = 17,730 ft<sup>2</sup>  
EFF = 88%

25 UNITS



319 RICHMOND RD.

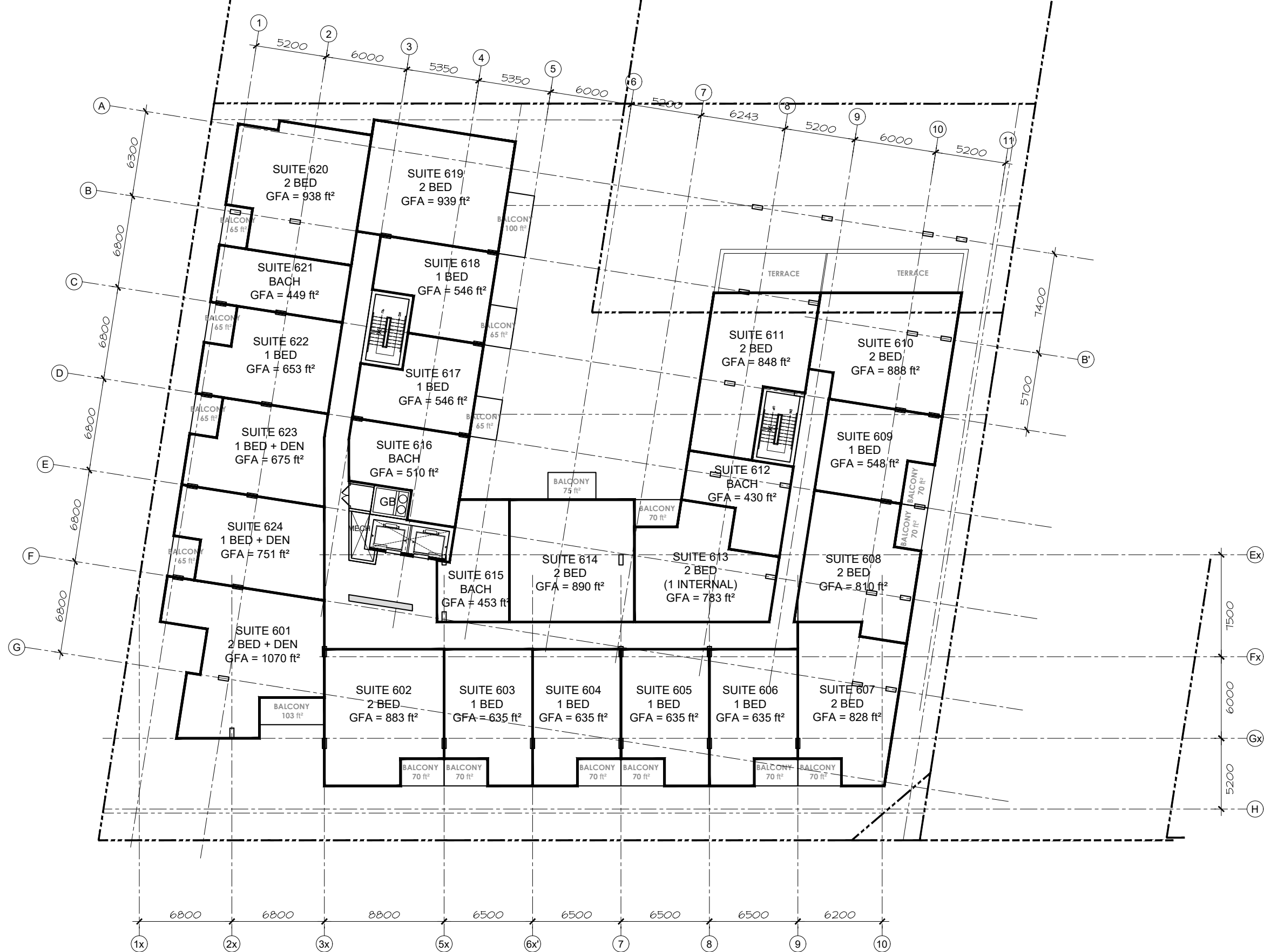
LEVEL 5  
MAY 14th, 2020  
SCALE 1:300



LEVEL 6

GFA = 19,603 ft<sup>2</sup>  
NET = 17,130 ft<sup>2</sup>  
EFF = 87%

24 UNITS



319 RICHMOND RD.

LEVEL 6  
MAY 14th, 2020

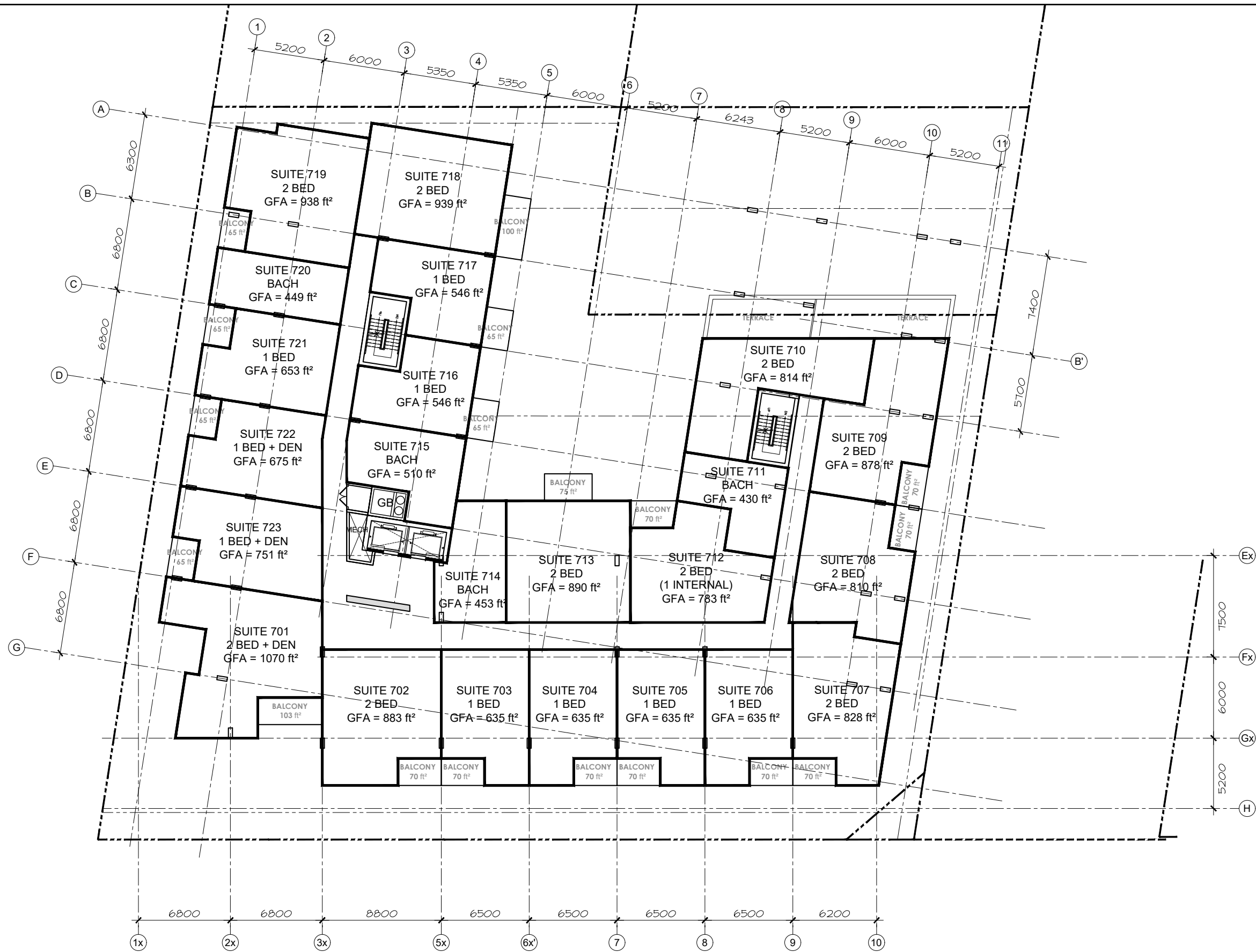
SCALE 1:300



LEVEL 7

GFA = 18,975 ft<sup>2</sup>  
NET = 16,538 ft<sup>2</sup>  
EFF = 87%

23 UNITS



3 1 9 R I C H M O N D R D .

LEVEL 7  
MAY 14th, 2020

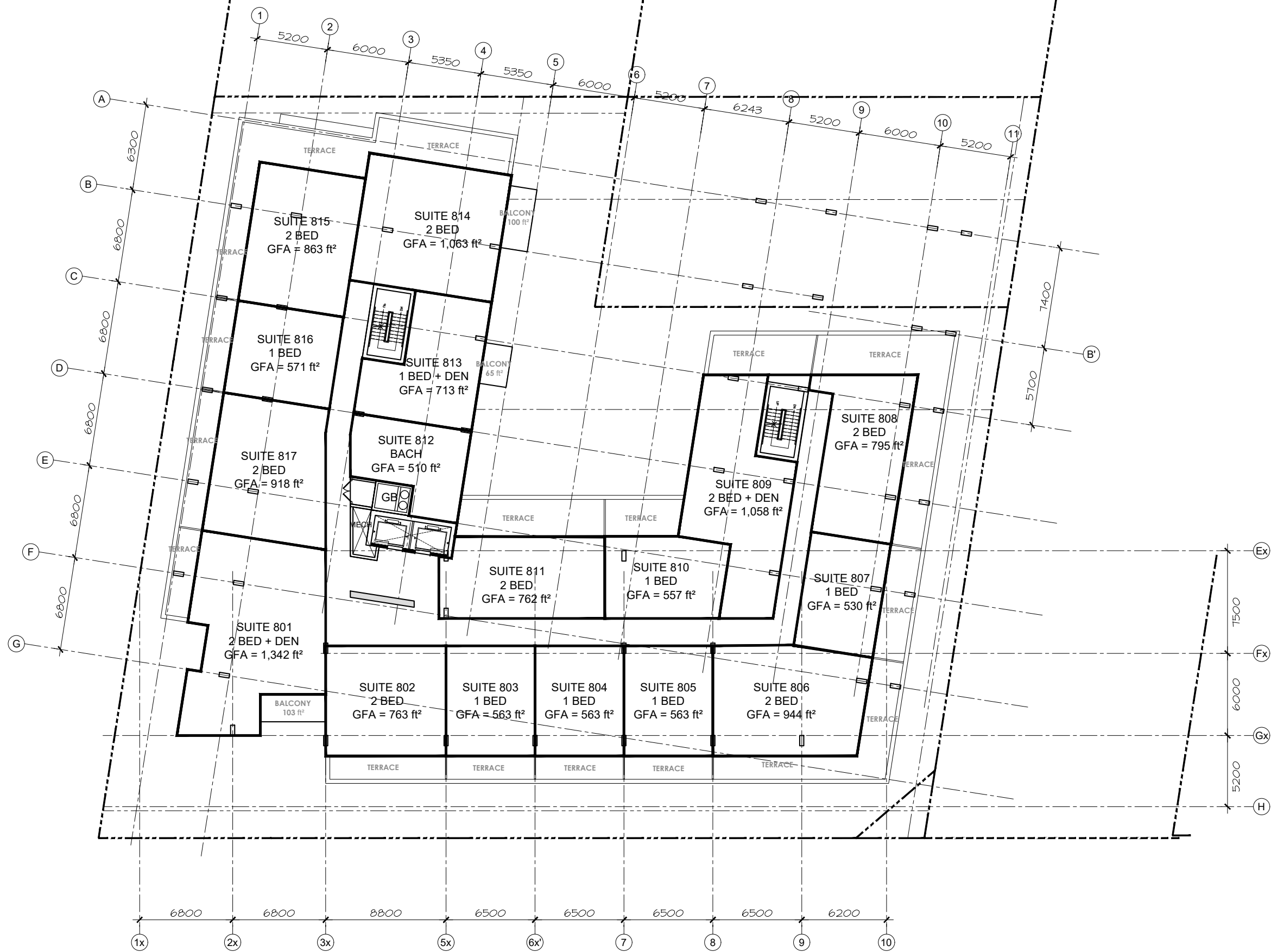
SCALE 1:300



LEVEL 8

GFA = 15,666 ft<sup>2</sup>  
NET = 13,317 ft<sup>2</sup>  
EFF = 85%

17 UNITS



3 1 9 R I C H M O N D R D .

LEVEL 8  
MAY 14th, 2020

SCALE 1:300

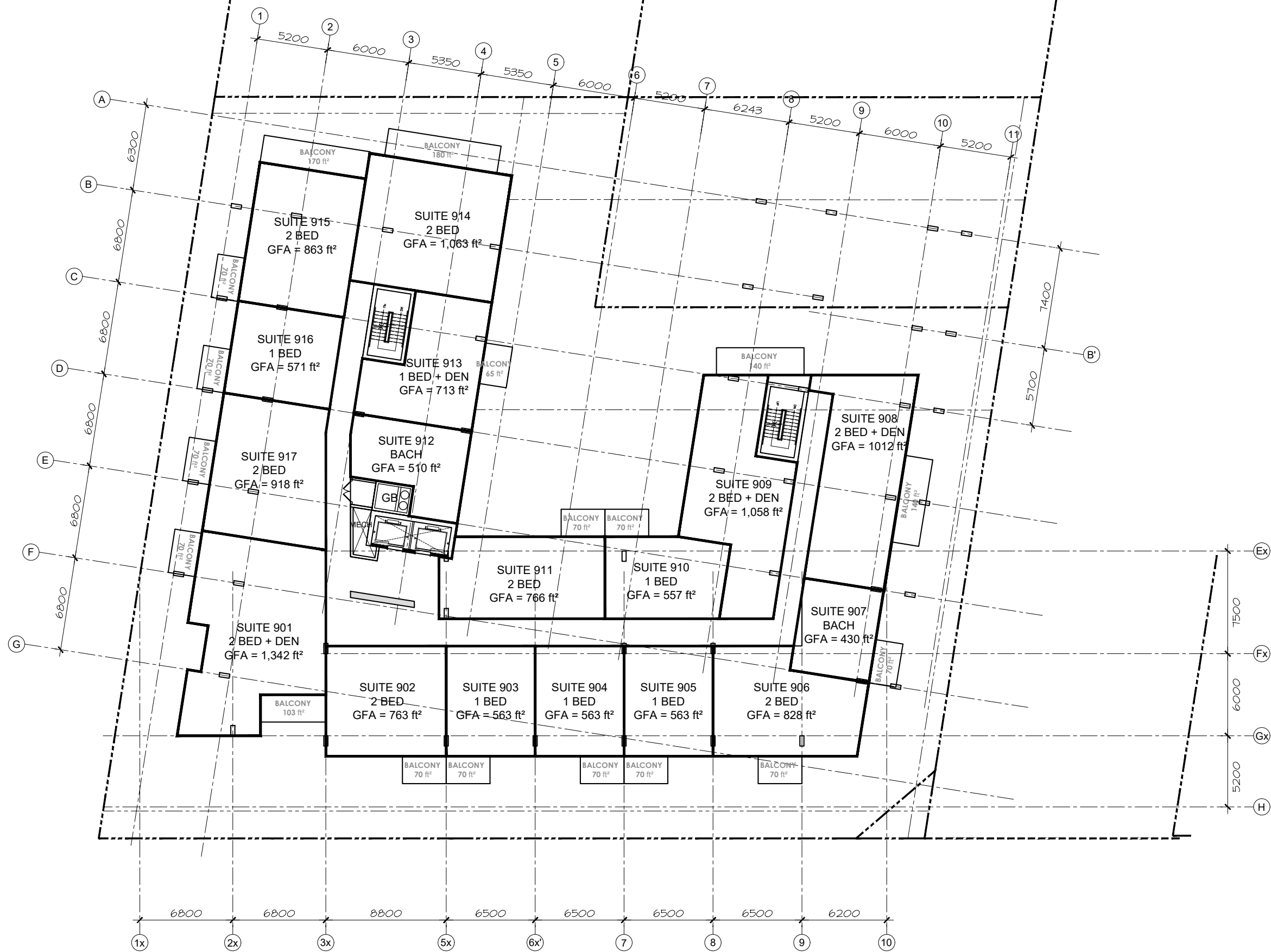




LEVEL 9

GFA = 15,666 ft<sup>2</sup>  
NET = 13,317 ft<sup>2</sup>  
EFF = 85%

17 UNITS



319 RICHMOND RD.

LEVEL 9  
MAY 14th, 2020

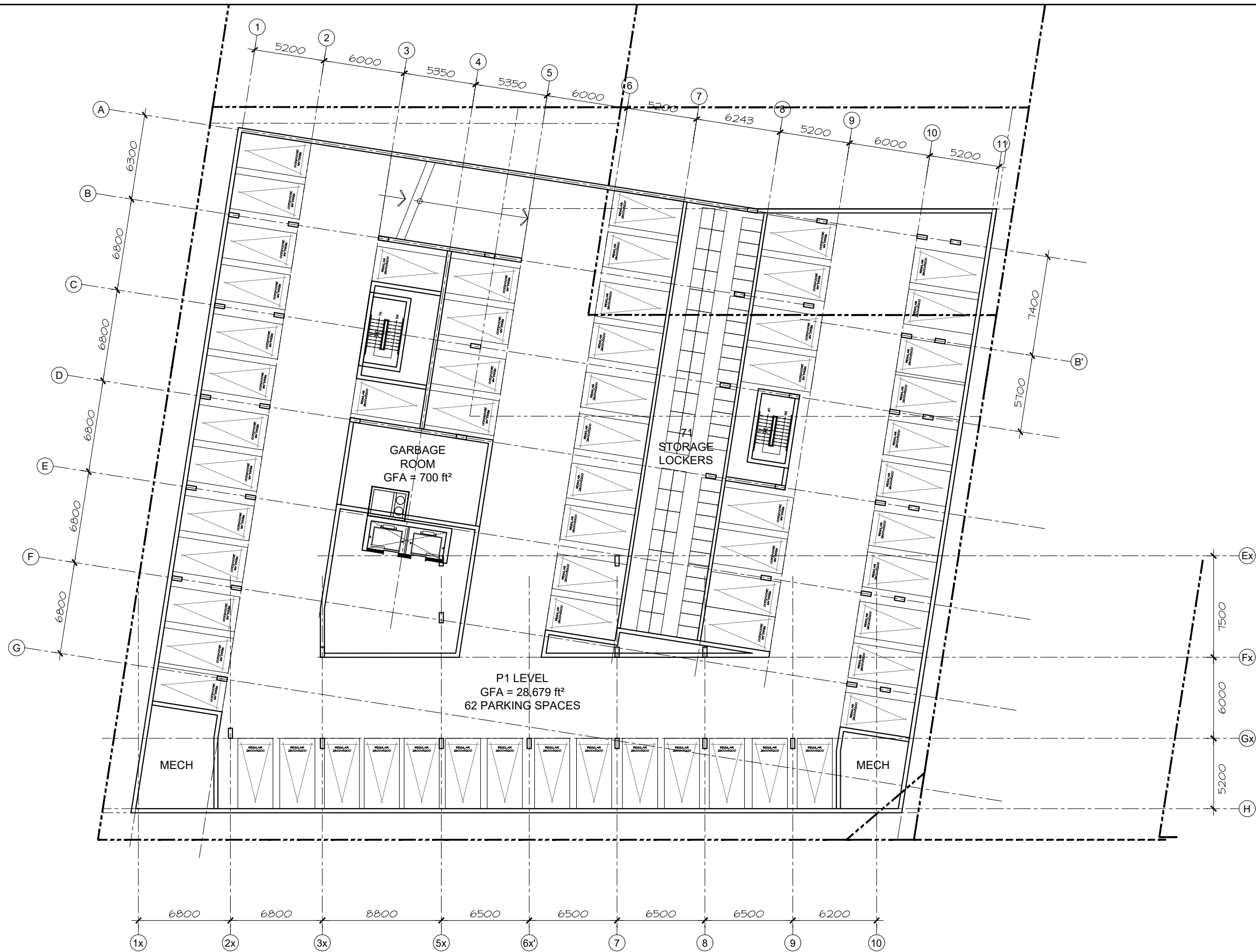
SCALE 1:300



**PARKING LEVEL 1**

GFA = 28,679 ft<sup>2</sup>

62 PARKING SPACES



**3 1 9 R I C H M O N D R D .**

PARKING LEVEL 1

MAY 14th, 2020

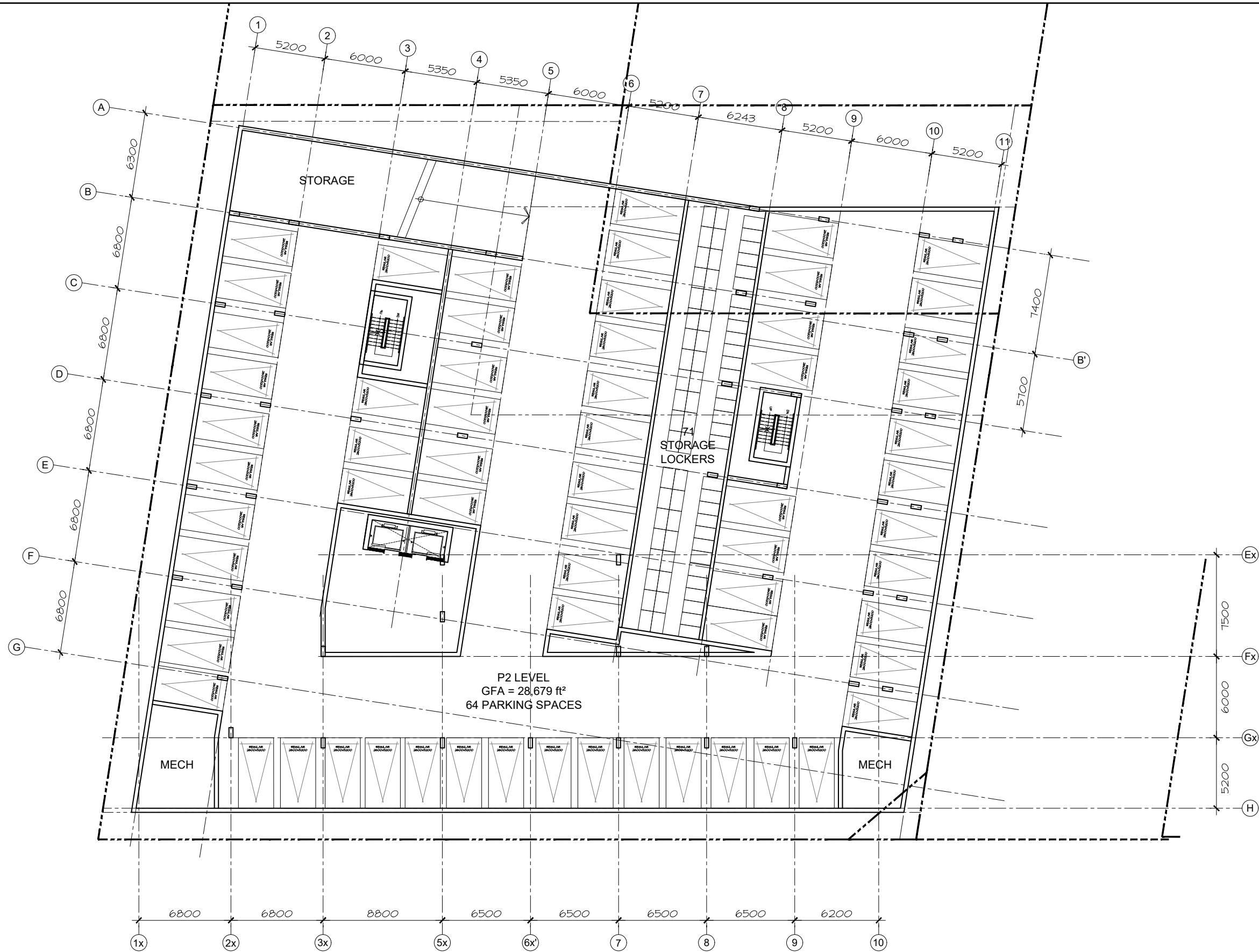
SCALE 1:300



**PARKING LEVEL 2**

GFA = 28,679 ft<sup>2</sup>

64 PARKING SPACES



**3 1 9 R I C H M O N D R D .**

PARKING LEVEL 2

MAY 14th, 2020

SCALE 1:300





