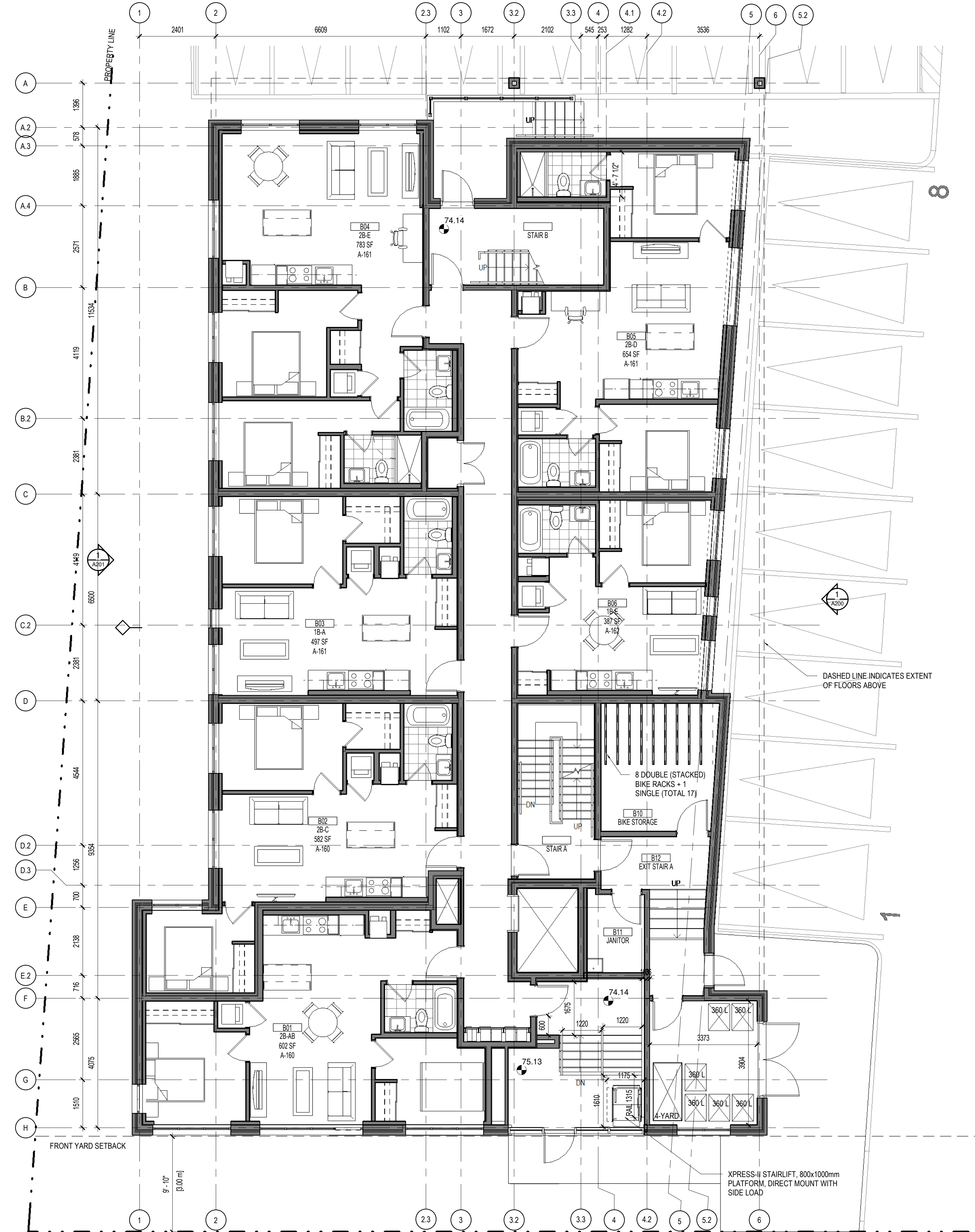


APPROVED
By Geraldine Wildman at 3:40 pm, Dec 14, 2021

G. Wildman

GERALDINE WILDMAN
A/MANAGER, DEVELOPMENT REVIEW EAST BRANCH
PLANNING, INFRASTRUCTURE & ECONOMIC
DEVELOPMENT DEPARTMENT, CITY OF OTTAWA

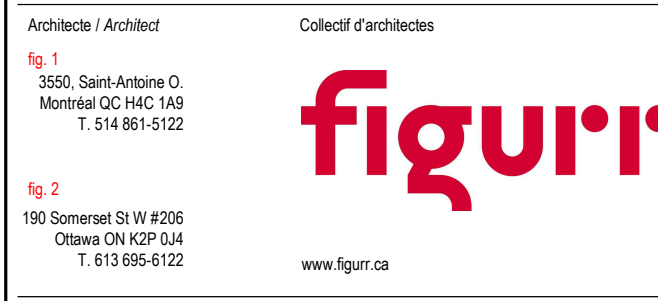


- GENERAL NOTES**
1. ALL WINDOW AND DOOR DIMENSIONS ARE TO ROUGH STUD/MASONRY OPENING
 2. ALL OUTSIDE DIMENSIONS ARE TO OUTSIDE FACE OF SHEATHING.
 3. REFER TO STRUCTURAL DRAWINGS FOR ALL BEAMS, LINTELS, POSTS, FLOOR AND ROOF FRAMING.
 4. ALL ELECTRICAL AND MECHANICAL ITEMS SHOWN ON DRAWINGS FOR LOCATIONS ONLY. COORD. W/ MECH. & ELEC. DRAWINGS.
 5. CAULK AND SEAL AT ALL MECHANICAL AND ELECTRICAL PENETRATIONS.
 6. PROVIDE FIRE STOPPING FOR ALL MECHANICAL AND ELECTRICAL PENETRATIONS THROUGH FIRE-RATED ASSEMBLIES. INSTALL ANY UNUSED PENETRATIONS WITH FIRESTOPPING TO SUIT ASSEMBLY.
 7. VERIFY ALL DOOR AND WINDOW SIZES PRIOR TO FRAMING OF OPENINGS.
 8. SOILS CONSULTANT TO REVIEW AND VERIFY SOILS CONDITIONS PRIOR TO POURING FOOTINGS.
 9. BACKFILL MATERIAL TO BE APPROVED. CLEAR SAND TO MEET REQUIREMENTS OF A DRAINAGE LAYER.
 10. REFER TO RCP FOR BULKHEAD LOCATIONS AND DEPTHS.
 11. SEE WINDOW SCHEDULE FOR TYPICAL WINDOW TIE-IN DETAILS.
 12. FURNITURE SHOWN FOR REFERENCE PURPOSES ONLY.
 13. PROVIDE PREFINISHED TRANSITION STRIPS AT JOINTS OF DISSIMILAR MATERIALS.
 14. ALL ELECTRICAL CONTROL HEIGHTS WITHIN BARRIER-FREE PATH OF TRAVEL AREAS THROUGHOUT THE BUILDING AND UNITS TO COMPLY WITH OBC 3.8.
 15. REFER TO CIVIL & MECHANICAL DRAWINGS FOR WEeping TILE DRAINAGE CONNECTIONS
 16. PROVIDE SOUNDPROOF FIBERGLASS MATS IN ALL PARTITIONS WITH SUPPLY PIPES, SANITARY DRAIN OR RAINWATER LEADERS. COORD. W/ MECH.

- LEGEND**
- ALI ALIGN DESIGNATED SURFACES
 - DIM CLEAR INDICATED CLEAR DIMENSION REQUIRED BETWEEN FINISHED SURFACES
 - FD FLOOR DRAIN (REFER TO MECH.)
 - RD ROOF DRAIN (REFER TO MECH.)
 - EP ELECTRICAL PANEL (REFER TO ELEC.) AS PER OBC 3.8.3.18
 - TACTILE ATTENTION INDICATOR AS PER OBC 3.8.3.18
 - BARRIER-FREE OPERATOR
 - 4" DIA. GEOTEXTILE ENCAPSULATED WEeping TILE - SEE GENERAL NOTES
 - HATCH INDICATED LOCATION OF FOUNDATION CHECK TO ACCOMMODATE EXTERIOR DOORS. COORD. W/ DOOR SCHEDULE
 - RECESSED ENTRANCE FLOOR GRILLE. DIMENSIONS AS INDICATED ON DRAWINGS. PROVIDE 2" DEPRESSION. ENSURE SLAB DEPRESSION IS 3" LARGER THAN FLOOR GRILLE SIZE.
 - FIRE DEPARTMENT CONNECTION COORD W/ MECH
 - FDC
 - FIRE HOSE CABINET. COORD W/ MECH

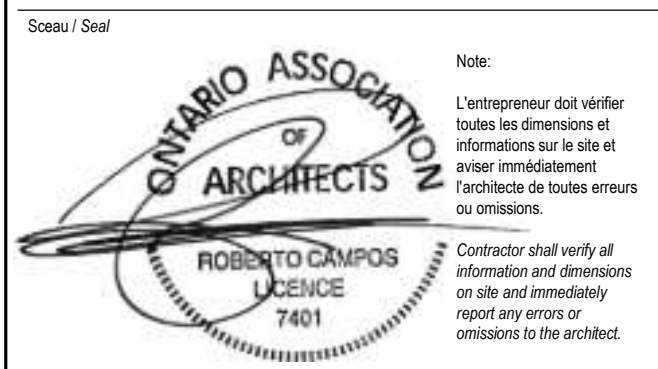
1
A120 BASEMENT FLOOR PLAN
1:75

No.	Date	Émis pour / Object
A	2020/05/04	ISSUED FOR CLIENT REVIEW
1	2020/06/10	COORDINATION
2	2020/06/23	ISSUED FOR SITE PLAN CONTROL
3	2020/11/16	IFPC RESPONSE
4	2020/12/09	SITE PLAN CONTROL RESPONSE
5	2021/03/10	COORDINATION
6	2021/04/22	30% PROGRESS
7	2021/06/07	SITE PLAN CONTROL RESPONSE



Ca dessin est sujet au droit d'auteur. Il ne peut être reproduit pour quelque intention ou usage que ce soit, si ce n'est avec l'approbation écrite de l'auteur ou de l'éditeur original.

This drawing is subject to copyright. It is not to be reproduced for any purpose or by any means, and may only be used if it bears an original stamp and signature.



3 1/2 STOREY APARTMENT

2487 INNES RD, OTTAWA ON
BASEMENT FLOOR PLAN

Drawn by / Dessiné par	No. projet / Project number
LB, GCG	1963
Verified by / Vérifié par	No. dessin / Drawing number
MD	
Etchelle / Scale	As indicated
Date de création du dessin / Drawing creation date	06/05/18

A120