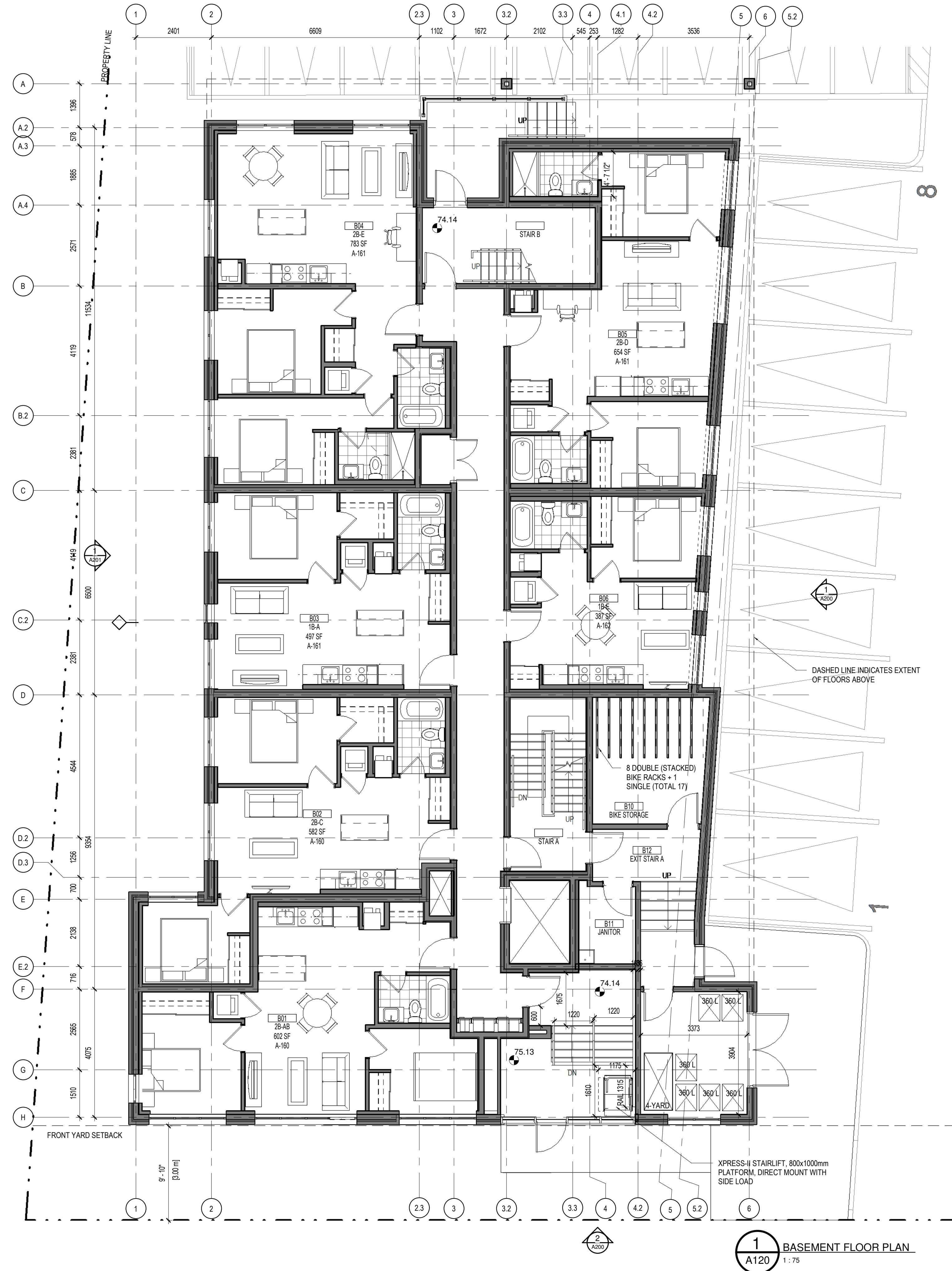


APPROVED
By Geraldine Wildman at 2:43 pm, Dec 14, 2021

G. Wildman

GERALDINE WILDMAN
A/MANAGER, DEVELOPMENT REVIEW EAST BRANCH
PLANNING, INFRASTRUCTURE & ECONOMIC
DEVELOPMENT DEPARTMENT, CITY OF OTTAWA



1
A120 BASEMENT FLOOR PLAN
1 : 75

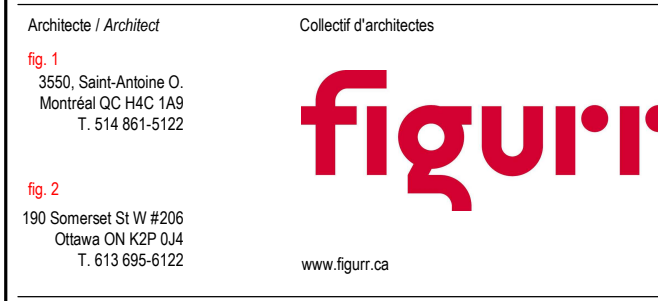
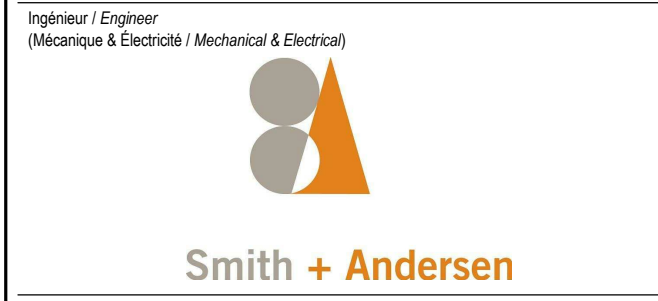
GENERAL NOTES

1. ALL WINDOW AND DOOR DIMENSIONS ARE TO ROUGH STUD/MASONRY OPENING
2. ALL OUTSIDE DIMENSIONS ARE TO OUTSIDE FACE OF SHEATHING.
3. REFER TO STRUCTURAL DRAWINGS FOR ALL BEAMS, LINTELS, POSTS, FLOOR AND ROOF FRAMING.
4. ALL ELECTRICAL AND MECHANICAL ITEMS SHOWN ON DRAWINGS FOR LOCATIONS ONLY. COORD. W/ MECH. & ELEC. DRAWINGS.
5. CAULK AND SEAL AT ALL MECHANICAL AND ELECTRICAL PENETRATIONS.
6. PROVIDE FIRE STOPPING FOR ALL MECHANICAL AND ELECTRICAL PENETRATIONS THROUGH FIRE-RATED ASSEMBLIES. INFILL ANY UNUSED PENETRATIONS WITH FIRESTOPPING TO SUIT ASSEMBLY.
7. VERIFY ALL DOOR AND WINDOW SIZES PRIOR TO FRAMING OF OPENINGS.
8. SOILS CONSULTANT TO REVIEW AND VERIFY SOILS CONDITIONS PRIOR TO POURING FOOTINGS.
9. BACKFILL MATERIAL TO BE APPROVED. CLEAR SAND TO MEET REQUIREMENTS OF A DRAINAGE LAYER.
10. REFER TO RCP FOR BULKHEAD LOCATIONS AND DEPTHS.
11. SEE WINDOW SCHEDULE FOR TYPICAL WINDOW TIE-IN DETAILS.
12. FURNITURE SHOWN FOR REFERENCE PURPOSES ONLY.
13. PROVIDE PREFINISHED TRANSITION STRIPS AT JOINTS OF DISSIMILAR MATERIALS.
14. ALL ELECTRICAL CONTROL HEIGHTS WITHIN BARRIER-FREE PATH OF TRAVEL AREAS THROUGHOUT THE BUILDING AND UNITS TO COMPLY WITH OBC 3.8.1.5.
15. REFER TO CIVIL & MECHANICAL DRAWINGS FOR WEEPING TILE DRAINAGE CONNECTIONS
16. PROVIDE SOUNDPROOF FIBERGLASS MATS IN ALL PARTITIONS WITH SUPPLY PIPES, SANITARY DRAIN OR RAINWATER LEADERS. COORD. W/ MECH.

LEGEND

- ALI ALIGN DESIGNATED SURFACES
- DIM CLEAR INDICATED CLEAR DIMENSION REQUIRED BETWEEN FINISHED SURFACES
- FD FLOOR DRAIN (REFER TO MECH.)
- RD ROOF DRAIN (REFER TO MECH.)
- EP ELECTRICAL PANEL (REFER TO ELEC.) AS PER OBC 3.8.3.18
- TACTILE ATTENTION INDICATOR AS PER OBC 3.8.3.18
- BARRIER-FREE OPERATOR
- 4" DIA. GEOTEXTILE ENCAPSULATED WEEPING TILE - SEE GENERAL NOTES
- HATCH INDICATED LOCATION OF FOUNDATION CHECK TO ACCOMMODATE EXTERIOR DOORS. COORD. W/ DOOR SCHEDULE
- RECESSED ENTRANCE FLOOR GRILLE. DIMENSIONS AS INDICATED ON DRAWINGS. PROVIDE 2 1/2" DEPRESSION. ENSURE SLAB DEPRESSION IS 3" LARGER THAN FLOOR GRILLE SIZE.
- FIRE DEPARTMENT CONNECTION COORD W/ MECH
- FDC
- FIRE HOSE CABINET. COORD W/ MECH

No.	Date	Émis pour / Object
A	2020/05/04	ISSUED FOR CLIENT REVIEW
1	2020/06/10	COORDINATION
2	2020/06/23	ISSUED FOR SITE PLAN CONTROL
3	2020/11/16	IFPC RESPONSE
4	2020/12/09	SITE PLAN CONTROL RESPONSE
5	2021/03/10	COORDINATION
6	2021/04/22	30% PROGRESS
7	2021/06/07	SITE PLAN CONTROL RESPONSE



3 1/2 STOREY APARTMENT

2487 INNES RD, OTTAWA ON

Title / Titre **BASEMENT FLOOR PLAN**

Dessiné par / Drawn by **LB, GCG** No. projet / Project number **1963**

Vérifié par / Verified by **MD** No. dessin / Drawing number **As indicated** Révision / Revision **1**

Echelle / Scale **As indicated**

Date de création du dessin / Drawing creation date **06/05/18**

A120

APPROVED
By Geraldine Wildman at 2:43 pm, Dec 14, 2021

G. Wildman

GERALDINE WILDMAN
A/MANAGER, DEVELOPMENT REVIEW EAST BRANCH
PLANNING, INFRASTRUCTURE & ECONOMIC
DEVELOPMENT DEPARTMENT, CITY OF OTTAWA



2 SOUTH ELEVATION
A200 1 : 75



1 EAST ELEVATION
A200 1 : 75

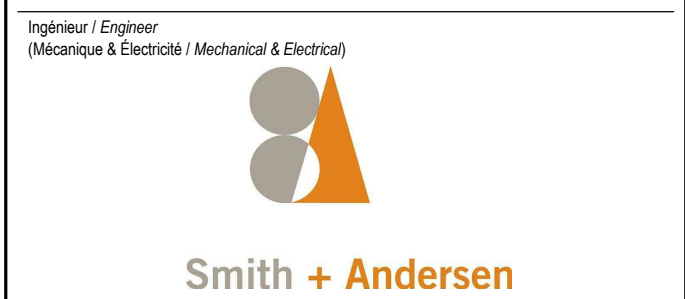
GENERAL NOTES - ELEVATIONS

1. ALL SEALANTS TO MATCH ADJACENT MASONRY / FIBER CEMENT SURFACE.
2. REFER TO SPECIFICATIONS FOR EXACT PRODUCT INFORMATION FOR ALL EXTERIOR FINISHES.
3. MECHANICAL LOURES SHOWN FOR REFERENCE. COORD. w/ MECHANICAL DRAWINGS.
4. LIGHT FIXTURES SHOWN FOR REFERENCE. COORD. w/ ELECTRICAL DRAWINGS.

ELEVATION LEGEND

- 1A FIBER CEMENT PANELS
COLOUR: DARK GREY
- 1B FIBER CEMENT PANELS
COLOUR: LIGHT GREY
- 2A METAL SIDING
COLOUR: DARK GREY
FORMAT: HORIZONTAL
- 2B METAL SIDING
COLOUR: LIGHT GREY
FORMAT: HORIZONTAL
- 3 MASONRY VENEER
COLOUR: LIGHT GREY
FORMAT: MODULAR

No.	Date	Émis pour / Object
A	2020/05/04	ISSUED FOR CLIENT REVIEW
1	2020/06/10	COORDINATION
2	2020/06/23	ISSUED FOR SITE PLAN CONTROL
3	2020/11/16	IFPC RESPONSE
4	2020/12/09	SITE PLAN CONTROL RESPONSE
5	2021/03/10	COORDINATION
6	2021/04/22	30% PROGRESS
7	2021/06/07	SITE PLAN CONTROL RESPONSE



Client / Client

Architecte / Architect

Fig. 1
3550, Saint-Armande O.
Montréal QC H4C 1A9
T. 514 861-9122

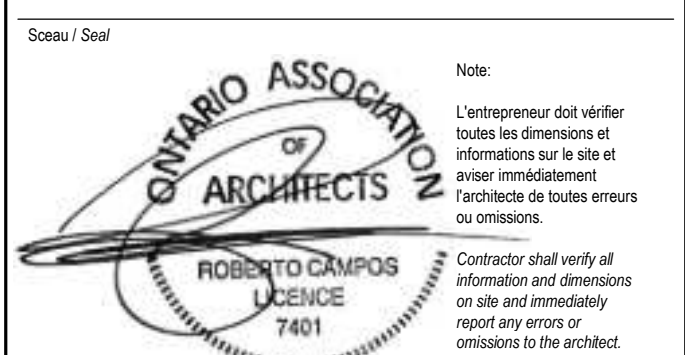
Fig. 2
190 Somerset St W #206
Ottawa ON N2P 0A4
T. 613 695-6122

www.figuri.ca

Droit d'auteur / Copyright

Ce dessin est sujet au droit d'auteur. Il ne peut être reproduit pour quelque intention ou usage que ce soit, sans être utilisé en accord avec l'apposition de la signature et de l'estampe originale.

This drawing is subject to copyright. It is not to be reproduced for any purpose or by any means, and may only be used if it bears an original stamp and signature.



Project / Projet

3 1/2 STOREY APARTMENT

2487 INNES RD, OTTAWA ON

Title / Titre

BUILDING ELEVATIONS

Dessiné par / Drawn by
LB

No. projet / Project number
1963

Vérifié par / Verified by
MD

No. dessin / Drawing number
As indicated

Échelle / Scale
As indicated

Date de création du dessin / Drawing creation date
04/06/20

A200

APPROVED
By Geraldine Wildman at 2:43 pm, Dec 14, 2021

G Wildman

GERALDINE WILDMAN
A/MANAGER, DEVELOPMENT REVIEW EAST BRANCH
PLANNING, INFRASTRUCTURE & ECONOMIC
DEVELOPMENT DEPARTMENT, CITY OF OTTAWA



2 NORTH ELEVATION
A201 1 : 75



1 WEST ELEVATION
A201 1 : 75

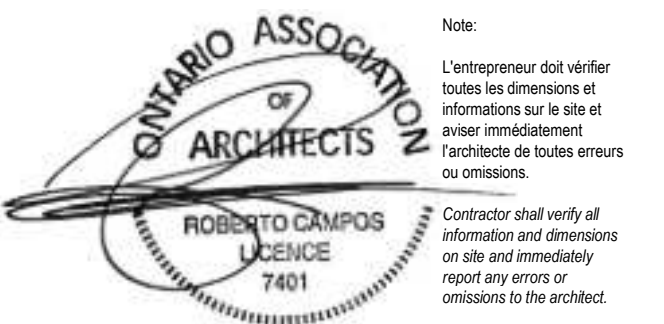
GENERAL NOTES - ELEVATIONS

1. ALL SEALANTS TO MATCH ADJACENT MASONRY / FIBER CEMENT SURFACE.
2. REFER TO SPECIFICATIONS FOR EXACT PRODUCT INFORMATION FOR ALL EXTERIOR FINISHES.
3. MECHANICAL LOUVRES SHOWN FOR REFERENCE. COORD. w/ MECHANICAL DRAWINGS.
4. LIGHT FIXTURES SHOWN FOR REFERENCE. COORD. w/ ELECTRICAL DRAWINGS.

ELEVATION LEGEND

- 1A FIBER CEMENT PANELS
COLOUR: DARK GREY
- 1B FIBER CEMENT PANELS
COLOUR: LIGHT GREY
- 2A METAL SIDING
COLOUR: DARK GREY
FORMAT: HORIZONTAL
- 2B METAL SIDING
COLOUR: LIGHT GREY
FORMAT: HORIZONTAL
- 3 MASONRY VENEER
COLOUR: LIGHT GREY
FORMAT: MODULAR

No.	Date	Émis pour / Object
A	2020/05/04	ISSUED FOR CLIENT REVIEW
1	2020/06/10	COORDINATION
2	2020/06/23	ISSUED FOR SITE PLAN CONTROL
3	2020/11/16	SPS RESPONSE
4	2020/12/09	SITE PLAN CONTROL RESPONSE
5	2021/03/10	COORDINATION
6	2021/04/22	30% PROGRESS
7	2021/06/07	SITE PLAN CONTROL RESPONSE



3 1/2 STOREY APARTMENT

2487 INNES RD, OTTAWA ON
BUILDING ELEVATIONS

Drawn by / Dessiné par	Project / Project number
SB/LB	1963
Checked by / Vérifié par	No. dessin / Drawing number
RC, MD	
Scale / Echelle	Revision / Révision
As indicated	
Date de création du dessin / Drawing creation date	
2020/04/02	

A201