



# MOVING & STORAGE OF ORLEANS

3636 Innes Rd, Ottawa, ON K1C1T1



ADVERTISING & MARKETING ASSOCIATES, INC.



ARCHITECTURAL DESIGN & FACILITY IMAGING

April 6, 2020

Conceptual renderings are subject to change and should not be implemented.

**U-HAUL**  
**MOVING & STORAGE OF ORLEANS**  
3636 Innes Rd, Ottawa, ON K1C1T1



# MOVING & STORAGE OF ORLEANS

3636 Innes Rd, Ottawa, ON K1C1T1



FAUX WINDOW DECALS ON ALUMINUM TO PROVIDE FENESTRATION & RETAIL APPEARANCE



ARCHITECTURAL DETAILS TO PROVIDE FENESTRATION FACING PUBLIC RIGHT OF WAY

LOCAL FOLIAGE / LANDSCAPING





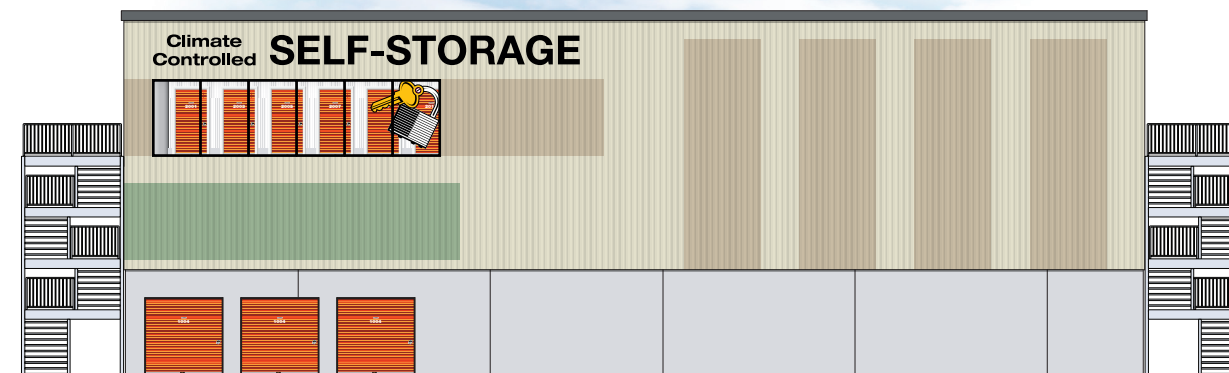
EAST ELEVATION

Scale: 1" = 20'



NORTH ELEVATION

Scale: 1" = 20'



SOUTH ELEVATION

Scale: 1" = 20'

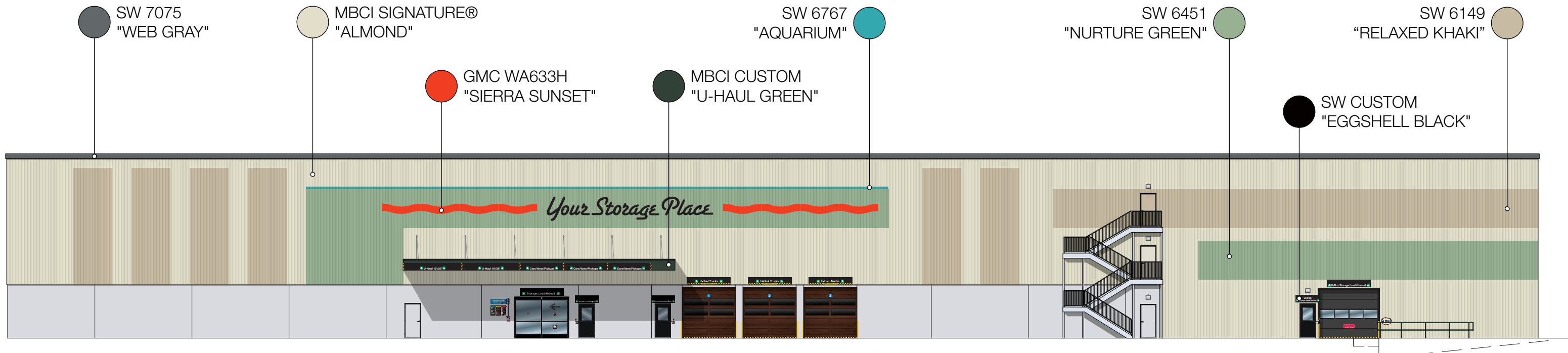


WEST ELEVATION

Scale: 1" = 20'

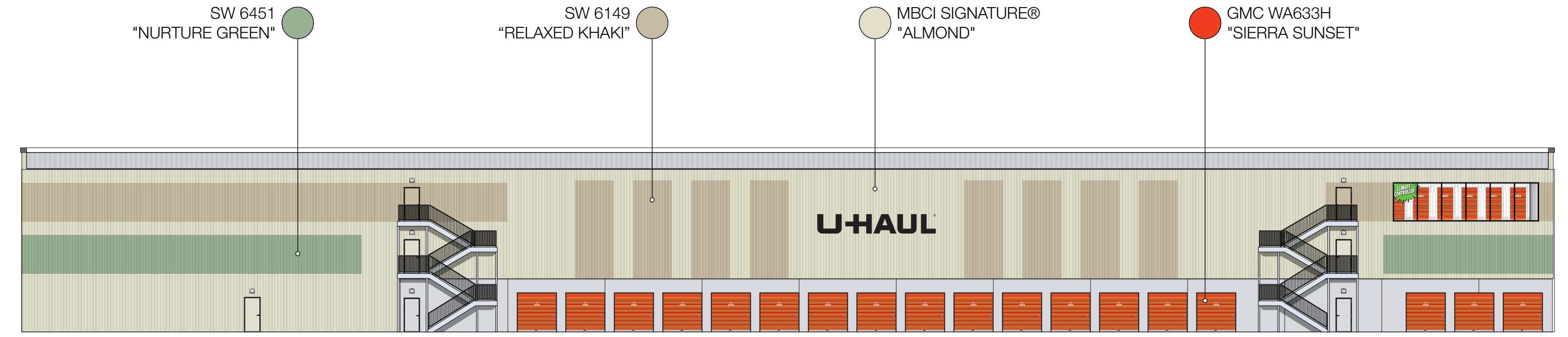
# MOVING & STORAGE OF ORLEANS

3636 Innes Rd, Ottawa, ON K1C1T1



## EAST ELEVATION

Scale: 1" = 20'

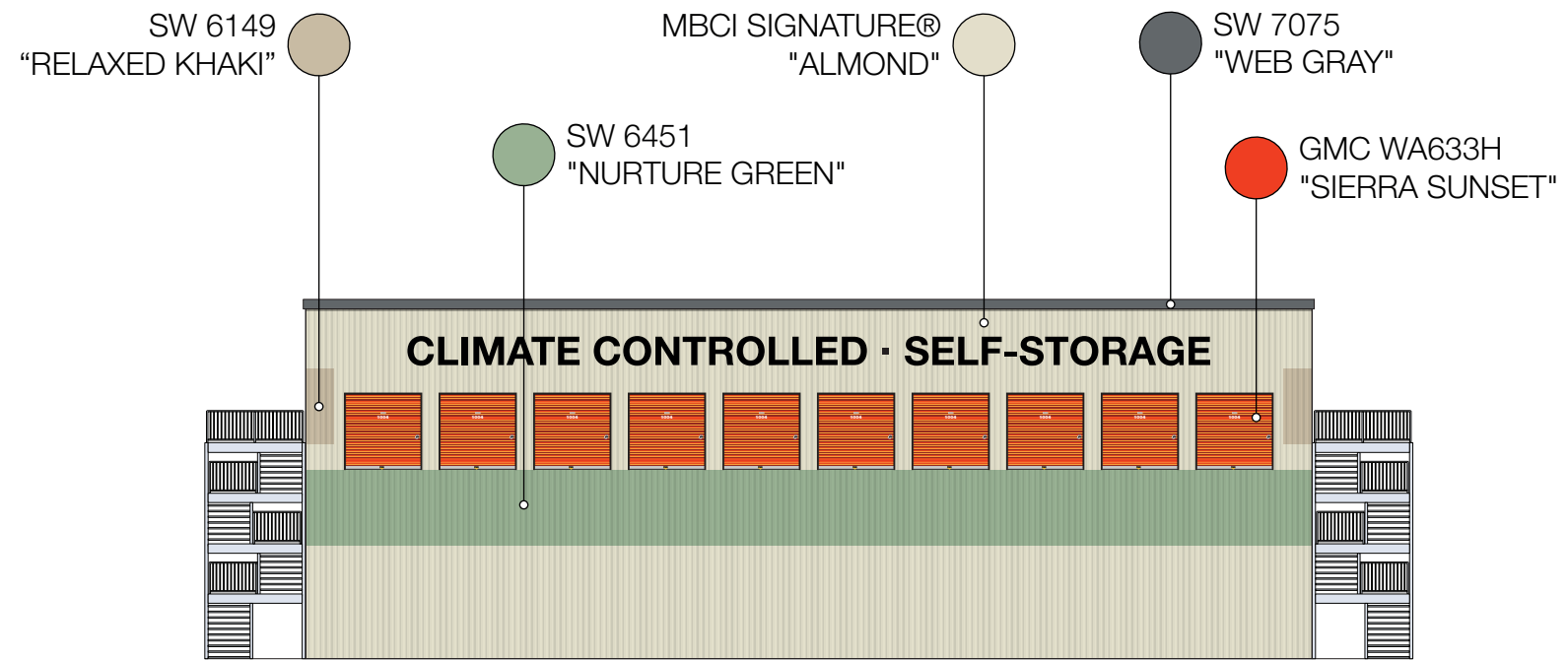


## WEST ELEVATION

Scale: 1" = 20'

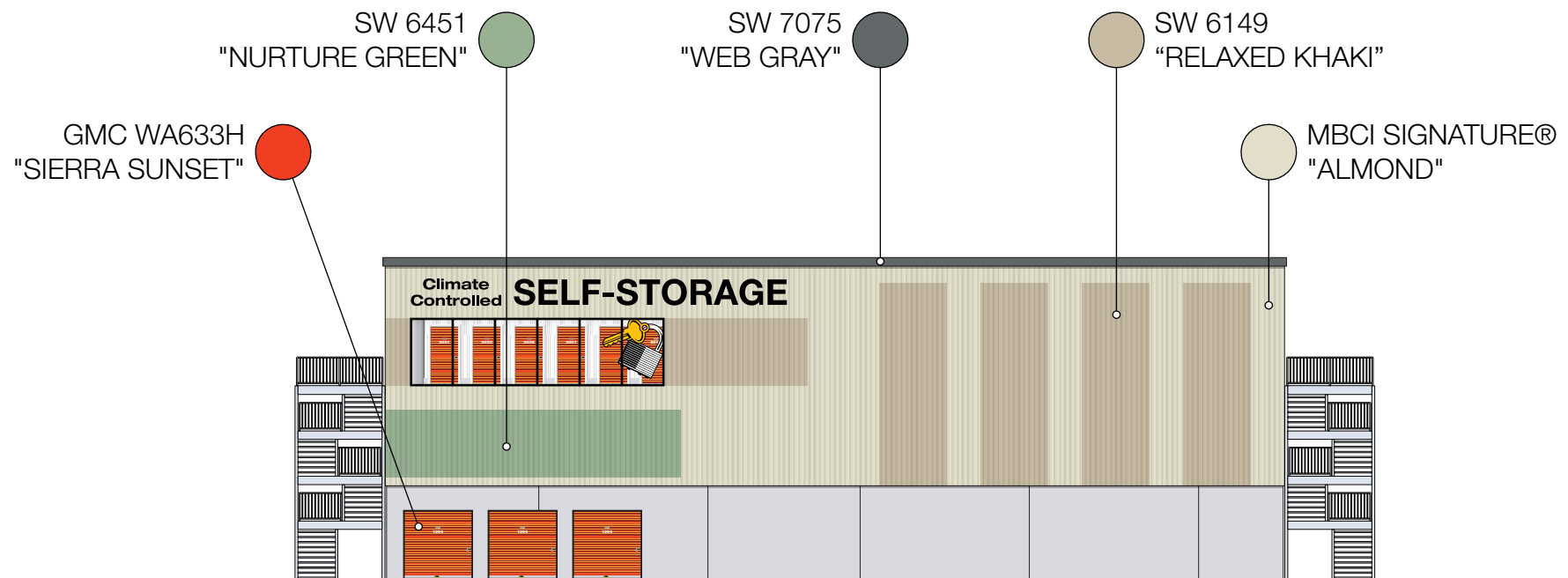
# MOVING & STORAGE OF ORLEANS

3636 Innes Rd, Ottawa, ON K1C1T1



## NORTH ELEVATION

Scale: 1" = 20'



## SOUTH ELEVATION

Scale: 1" = 20'

# MOVING & STORAGE OF ORLEANS

3636 Innes Rd, Ottawa, ON K1C1T1

PROJECTION ABOVE CUSTOMER STORAGE ENTRANCE PROVIDES PROTECTION FROM THE ELEMENTS

WOOD GRAIN DOORS PROMOTE A WELCOMING ENVIRONMENT

ARTISTIC CHANGES IN PAINT TO PROVIDE MODULATION TO THE FACADE

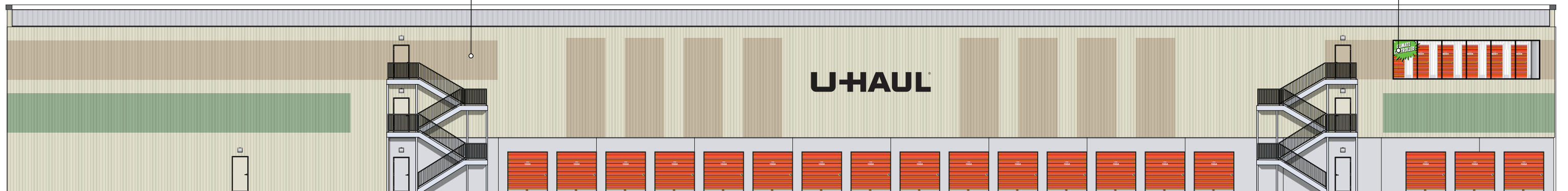


## EAST ELEVATION

Scale: 1" = 20'

ARTISTIC CHANGES IN PAINT TO PROVIDE MODULATION TO THE FACADE

FAUX WINDOW DECALS ON ALUMINUM TO PROVIDE FENESTRATION & RETAIL APPEARANCE



## WEST ELEVATION

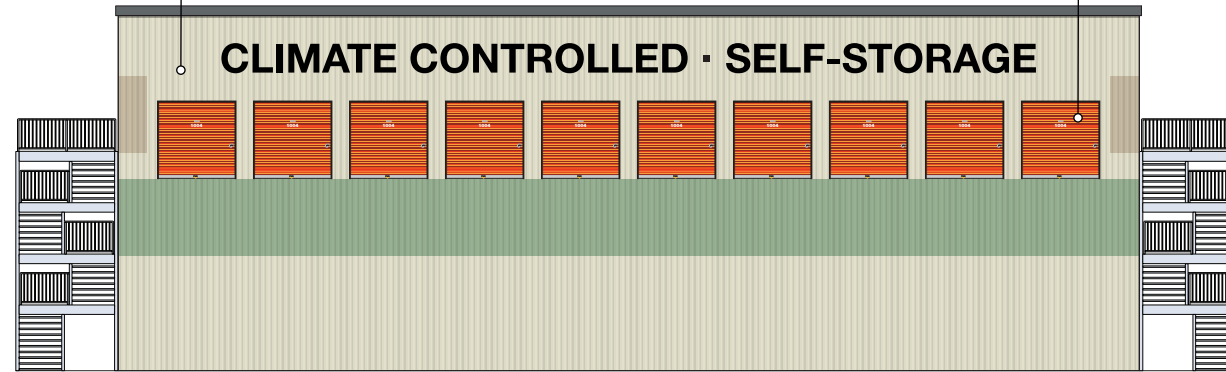
Scale: 1" = 20'

# MOVING & STORAGE OF ORLEANS

3636 Innes Rd, Ottawa, ON K1C1T1

ARTISTIC CHANGES IN PAINT TO PROVIDE MODULATION TO THE FACADE

ARCHITECTURAL DETAILS PROVIDE INTEREST AT SKYLINE

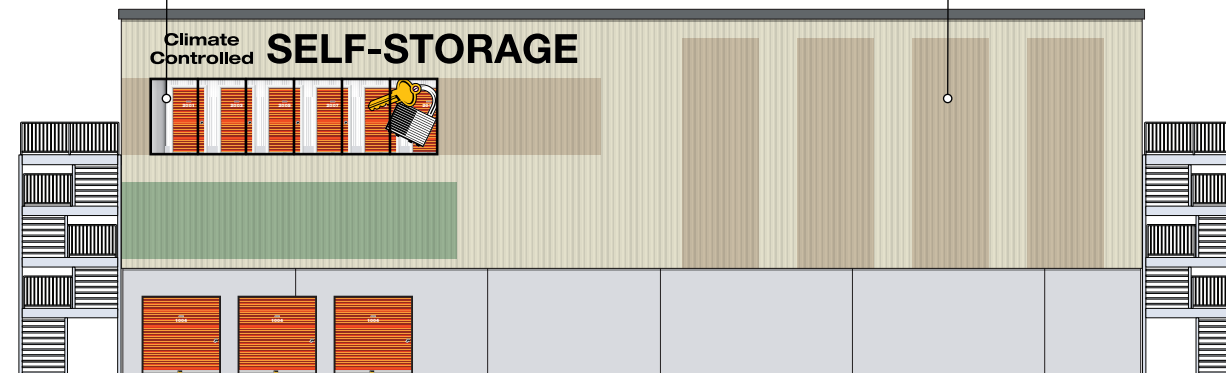


## NORTH ELEVATION

Scale: 1" = 20'

FAUX WINDOW DECALS ON ALUMINUM TO PROVIDE FENESTRATION & RETAIL APPEARANCE

ARTISTIC CHANGES IN PAINT TO PROVIDE MODULATION TO THE FACADE



## SOUTH ELEVATION

Scale: 1" = 20'



2'H x 56'W x 10'D  
 METAL AWNING

CLOPAY CLASSIC™ WOOD  
 RAISED-PANEL GARAGE DOORS

8"H  
 METAL TRIM



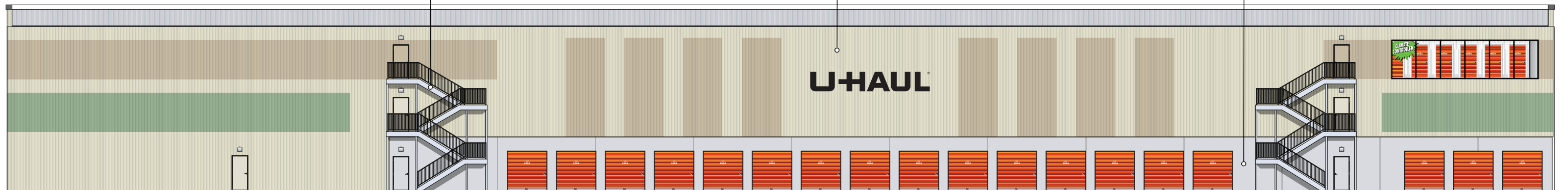
**EAST ELEVATION**

Scale: 1" = 20'

GALVANIZED METAL

MBCI 7.2  
 INSULATED METAL PANELS

TITL WALL CONCRETE

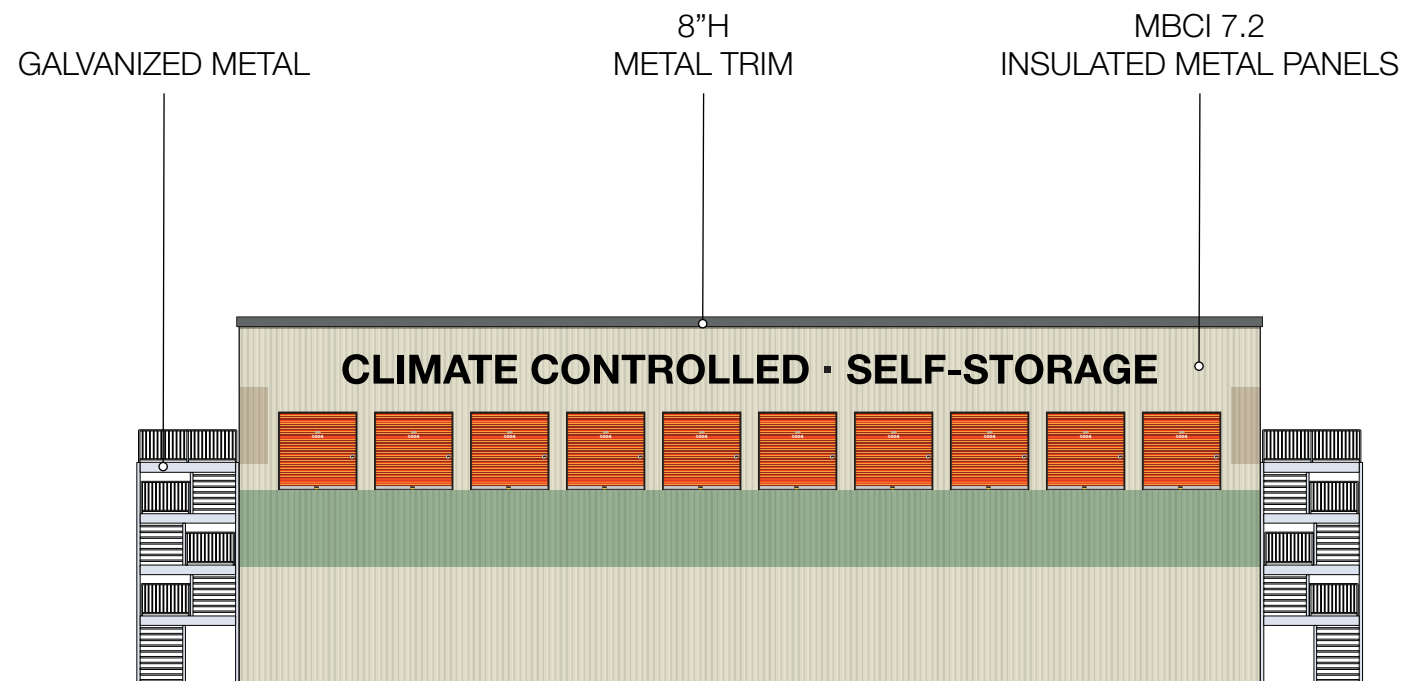


**WEST ELEVATION**

Scale: 1" = 20'

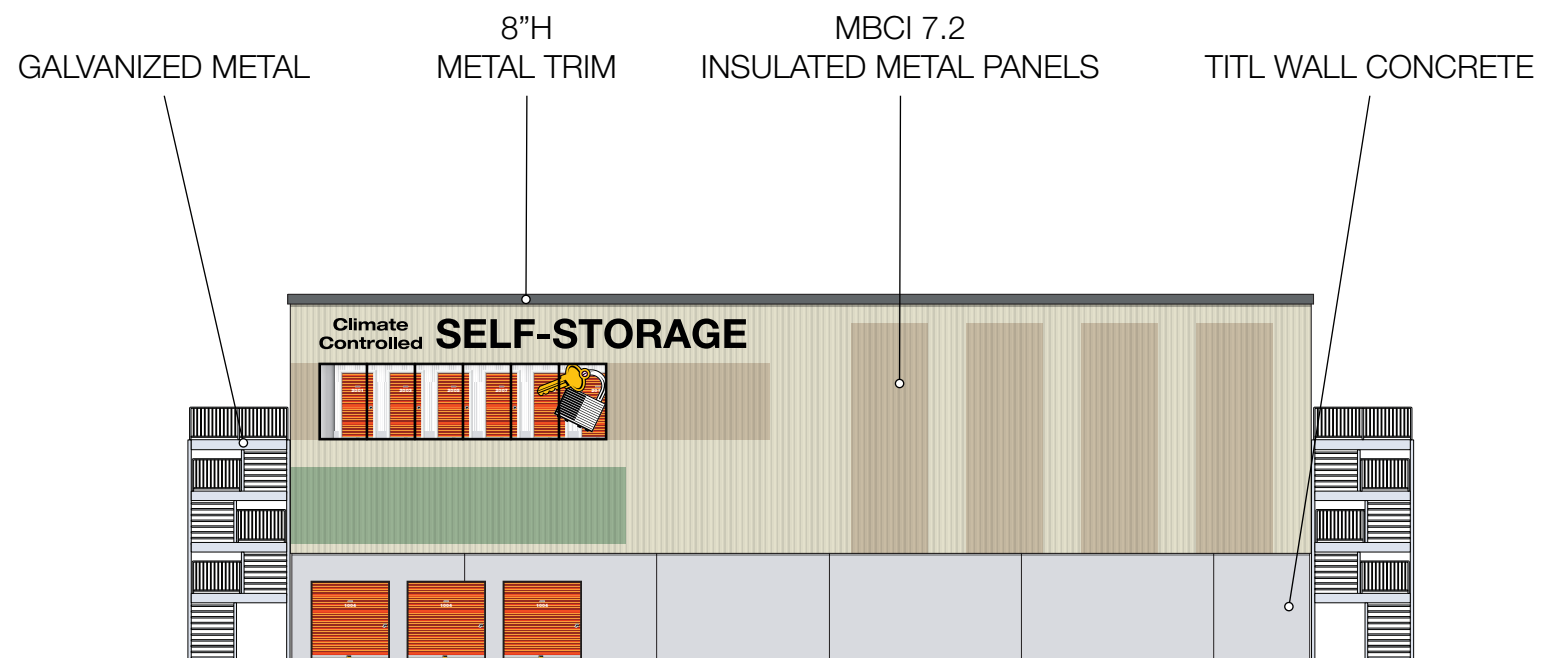
# MOVING & STORAGE OF ORLEANS

3636 Innes Rd, Ottawa, ON K1C1T1



## NORTH ELEVATION

Scale: 1" = 20'



## SOUTH ELEVATION

Scale: 1" = 20'



# MOVING & STORAGE OF ORLEANS

3636 Innes Rd, Ottawa, ON K1C1T1

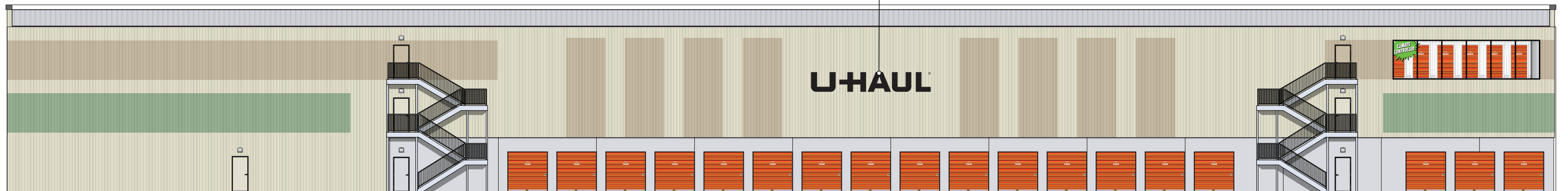
11 GAUGE POWDER-COATED STEEL  
34.28'W x 5'H  
171.4 SQ.FT.



## EAST ELEVATION

Scale: 1" = 20'

11 GAUGE POWDER-COATED STEEL  
24.41'W x 4'H  
97.64 SQ.FT.



## WEST ELEVATION

Scale: 1" = 20'

ADVERTISING & MARKETING ASSOCIATES, INC.



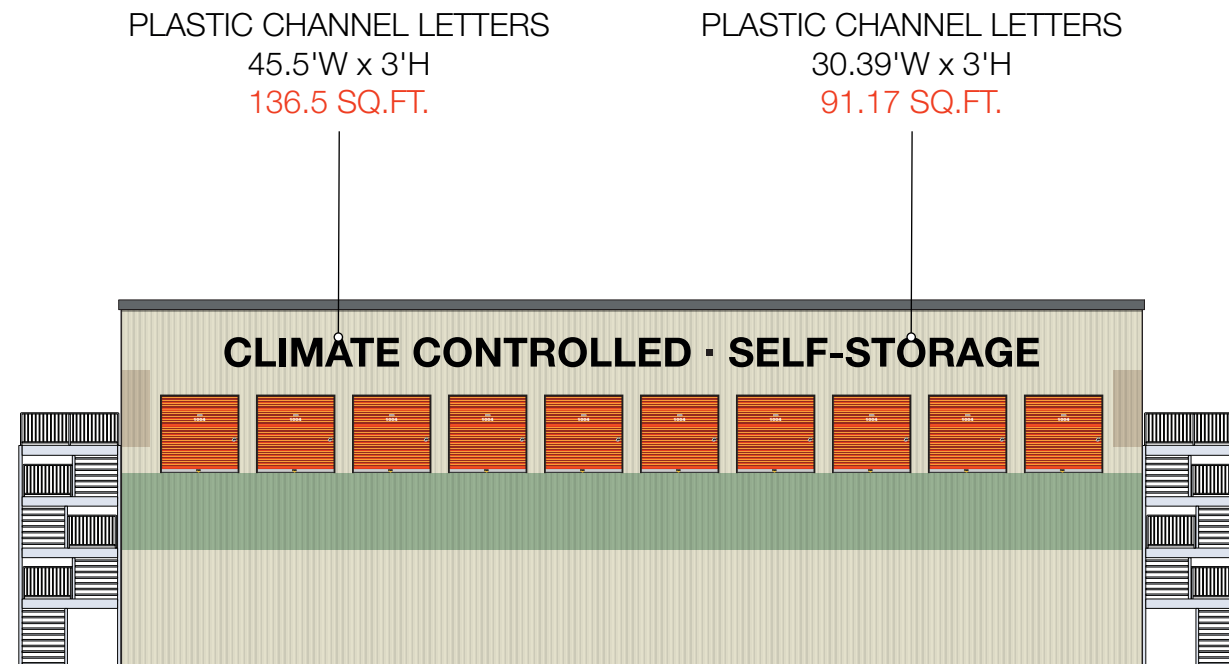
ARCHITECTURAL DESIGN & FACILITY IMAGING

April 6, 2020

Conceptual renderings are subject to change and should not be implemented.

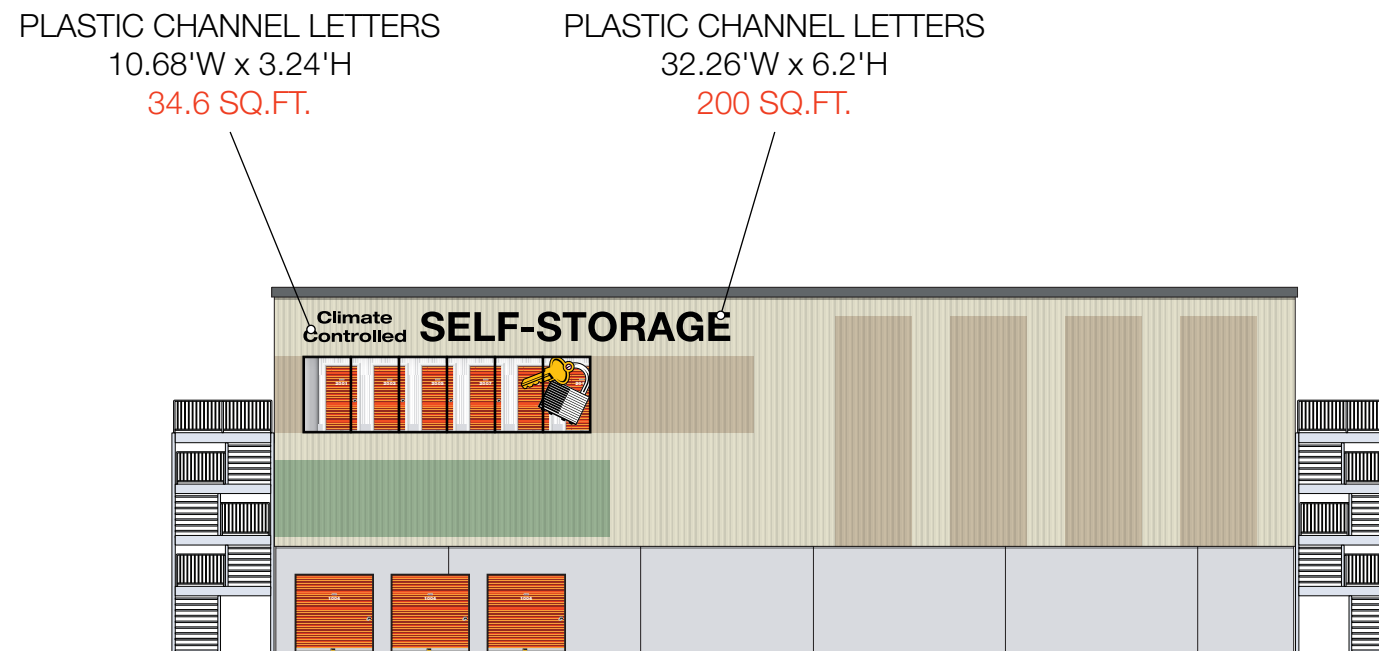
# MOVING & STORAGE OF ORLEANS

3636 Innes Rd, Ottawa, ON K1C1T1



## NORTH ELEVATION

Scale: 1" = 20'



## SOUTH ELEVATION

Scale: 1" = 20'