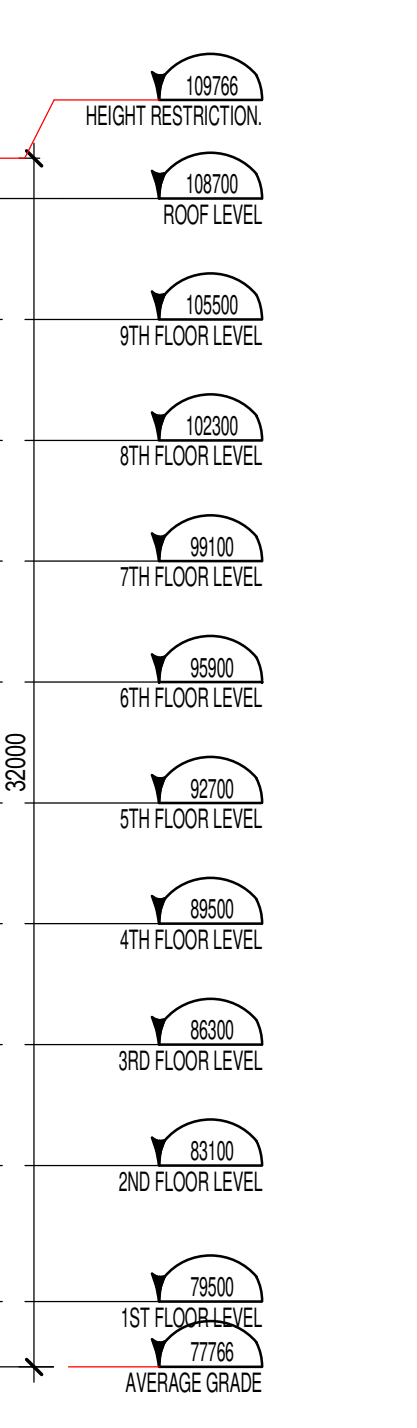
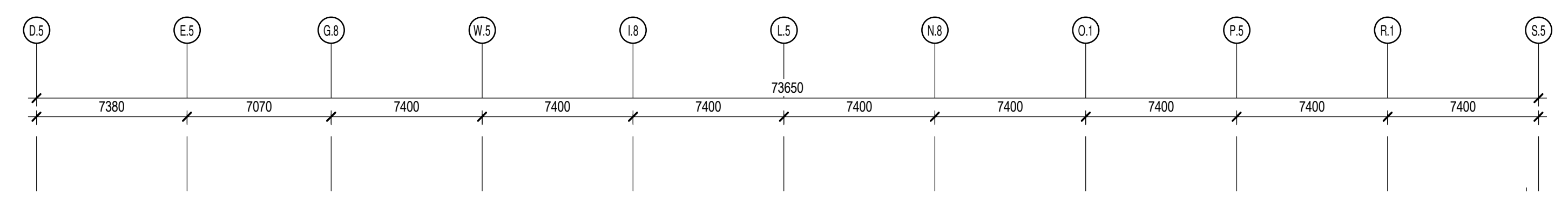
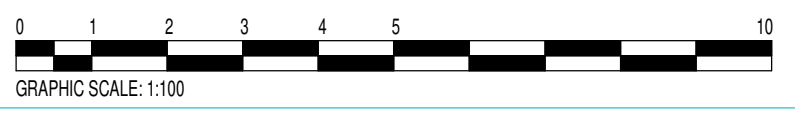


EAST ELEVATION 1:200



WEST ELEVATION 1:200



# NOTE	DESCRIPTION
1	TOP OF BANK ORDINARY HEIGHT WATER MARK
2	EXISTING MUNICIPAL MULTIPATH
3	EXISTING UTILITY POLE TO BE REMOVED
4	UNDERGROUND PARKING P1 OUTLINE
5	GROUND FLOOR OUTLINE
6	2ND FLOOR - OUTLINE
7	NEW SIDEWALK
8	EXISTING TRIBUTARIES
9	RETAINING WALL
10	EXISTING UTILITY POLE
11	OVERHEAD WIRES
12	PRIVATE BALCONY
13	PRIVATE TERRACE
14	ELEVATOR MECHANICAL PENTHOUSE
15	BIKE RACK
16	EXISTING FIRE HYDRANT
18	P2 LEVEL - OUTLINE
19	DEPRESSED CURB
20	EXIT STAIR
21	P3 LEVEL - OUTLINE
22	COMMERCIAL TERRACE
23	CANOPY PROFILE
24	WATER TANK ACCESS
25	PERGOLA
26	FIRE DEPARTMENT CONNECTION

- CIVIL Client  
**NOVATECH**  
 240 Michael Cowpland Drive, Suite 200, Ottawa, ON K2M 1P6  
 T 613 254 9643 novatech-eng.com
- INGÉNIEUR MÉCANIQUE Mechanical Engineer  
**NATIONAL MULTI-RESIDENTIAL INNOVATIVE DESIGN**  
 555 Leggett Drive, Tower A, Suite 212, Ottawa, ON K2K 2X3  
 T 613 224 2761 Fax 613 951 0586
- INGÉNIEUR EN STRUCTURE Structural Engineer  
**CIMA+**  
 740, rue Notre-Dame O., Montréal, QC H3C 3X6  
 T 514 337 2462
- ARCHITECTES Architect  
**NEUF architect(e)s**  
 630, boul. René-Lévesque O. 32e étage, Montréal QC H3B 1S6  
 T 514 847 1117 NEUFarchitectes.com
- SCEAU / Seal

**LINE TYPE LEGEND**

---	PROPERTY LINE
---	YARD SETBACK
---	ENVIRONMENTAL SETBACK

**EXTERIOR MATERIAL LEGEND**

□	PRECAST - SMOOTH FINISH, TYPE 1
□	PRECAST - SMOOTH FINISH, TYPE 2
□	PRECAST - WOOD PATTERN, TYPE 1
□	PRECAST - WOOD PATTERN, TYPE 2
□	PRECAST - WOOD PATTERN, TYPE 3
□	PRECAST - PATTERN LARGE STONE
□	PRECAST - VERTICAL STREEK PATTERN
□	METAL CLADDING
□	EIFS PANELS
□	METAL COVER COLUMNS AND PERGOLA, PAINTED

**PLAN SYMBOL LEGEND**

◇	RAILING OR GUARDRAIL TYPE - SEE PAGE A303 FOR DETAILS
◆	GENERAL NOTES - SEE LEGEND FOR CURTAIN WALL TYPE
◆	WINDOW OR CURTAIN WALL TYPE - SEE PAGE A303 FOR DETAILS
XX	WALL TYPE - SEE PAGE A800 FOR DETAILS
RT-XX	ROOF TYPE - SEE PAGE A800 FOR DETAILS
XX	DOOR NUMBER - SEE PAGE A900 & A901 FOR DETAILS
XX	ROOM NUMBER - SEE PLANS FOR DETAILS
XX	EXTERIOR MATERIAL TYPE - SEE PAGE A400 & A401 FOR LEGEND

NOTES GÉNÉRALES General Notes

- Ces documents d'architecture sont la propriété exclusive de NEUF architectes et ne peuvent être utilisés, reproduits ou copiés sans autorisation écrite préalable. / These architectural documents are the exclusive property of NEUF architects and cannot be used, copied or reproduced without written pre-authorization.
- Les dimensions apparaissant aux documents doivent être vérifiées par l'entrepreneur avant le début des travaux. / All dimensions which appear on the documents must be verified by the contractor before to start the work.
- Veuillez aviser l'architecte de toute dimension erreur et/ou divergence entre ces documents et ceux des autres professionnels. / The architect must be notified of all errors, omissions and discrepancies between these documents and those of the other professionals.
- Les dimensions sur ces documents doivent être lues et non mesurées. / The dimensions on these documents must be read and not measured.

ARCHITECTE PAYSAGER Landscape Architect  
**Gino Aiello**  
 50 Camélot Drive, Nepean, ON K2G 5X8  
 T 613 852 1343

CIVIL Client  
**NOVATECH**  
 240 Michael Cowpland Drive, Suite 200, Ottawa, ON K2M 1P6  
 T 613 254 9643 novatech-eng.com

INGÉNIEUR MÉCANIQUE Mechanical Engineer  
**NATIONAL MULTI-RESIDENTIAL INNOVATIVE DESIGN**  
 555 Leggett Drive, Tower A, Suite 212, Ottawa, ON K2K 2X3  
 T 613 224 2761 Fax 613 951 0586

INGÉNIEUR EN STRUCTURE Structural Engineer  
**CIMA+**  
 740, rue Notre-Dame O., Montréal, QC H3C 3X6  
 T 514 337 2462

ARCHITECTES Architect  
**NEUF architect(e)s**  
 630, boul. René-Lévesque O. 32e étage, Montréal QC H3B 1S6  
 T 514 847 1117 NEUFarchitectes.com

SCEAU / Seal



CLIENT Client  
**LÉPINE**  
 206-555 Leggett Dr., Tower A, Ottawa, ON K2K 2X3  
 T 613 591 9090 F 613 591 9095

COMPANY NAME  
**910 MARCH ROAD**

EMPLACEMENT Location NO PROJET No.  
 910 MARCH ROAD 12712.00

NO RELEASE DATE (aa-mm-jj)  
 0 ISSUED FOR ZONING 2023.01.26  
 1A ISSUED FOR SITE PLAN 2023.03.29

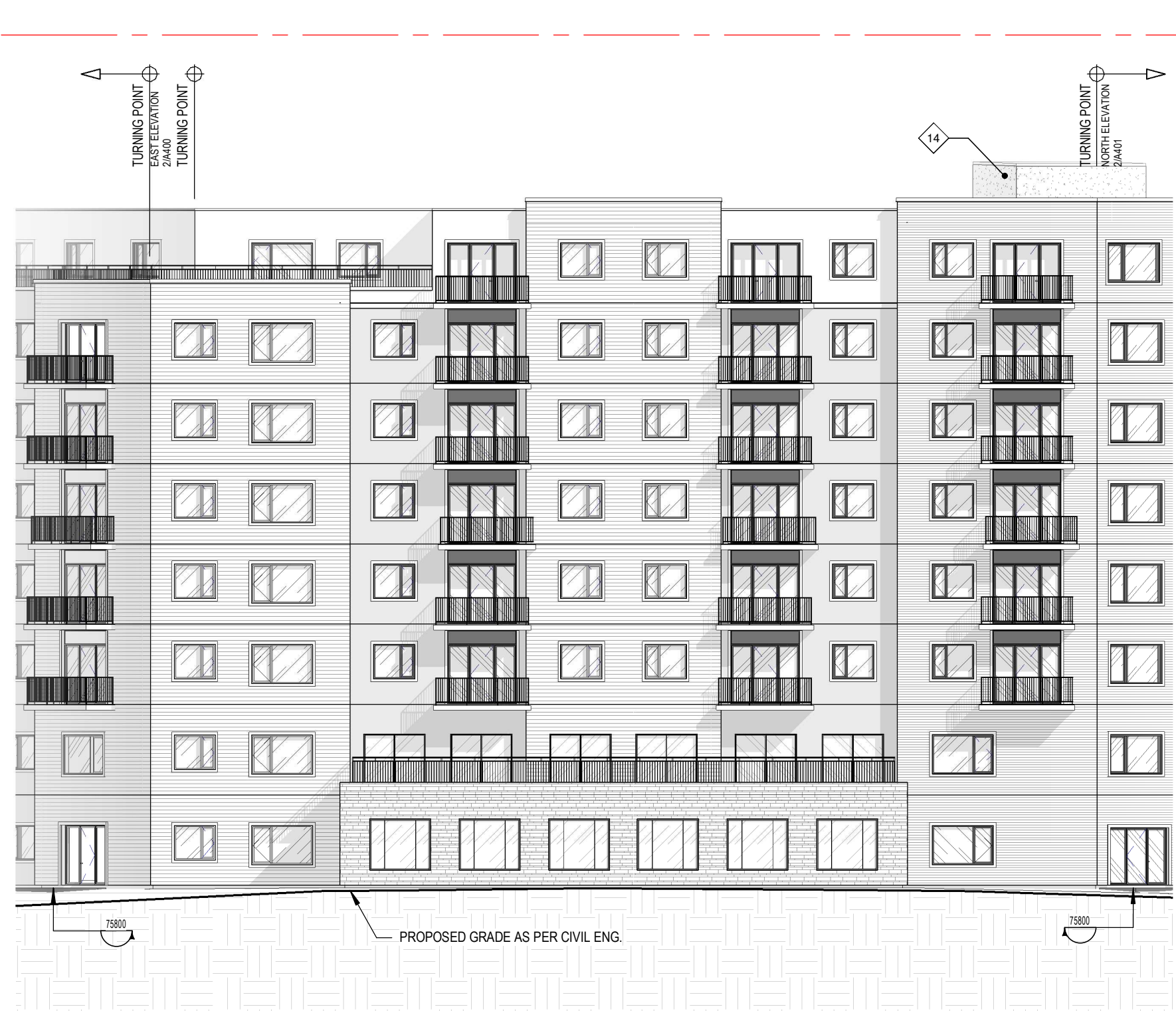
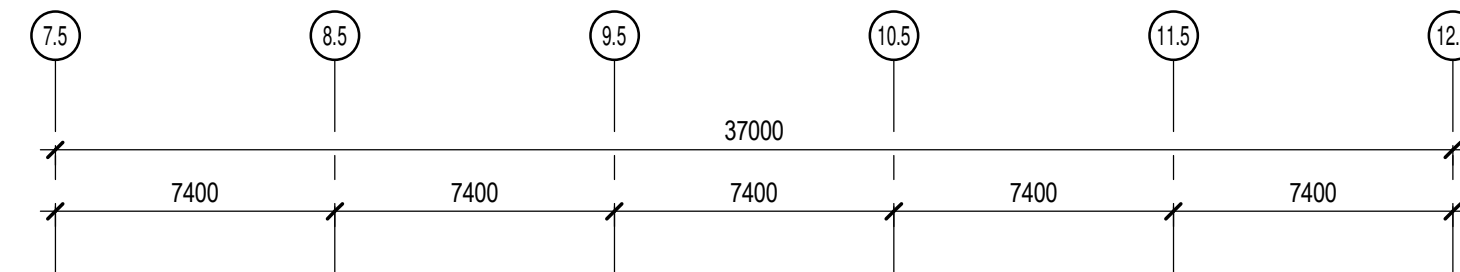
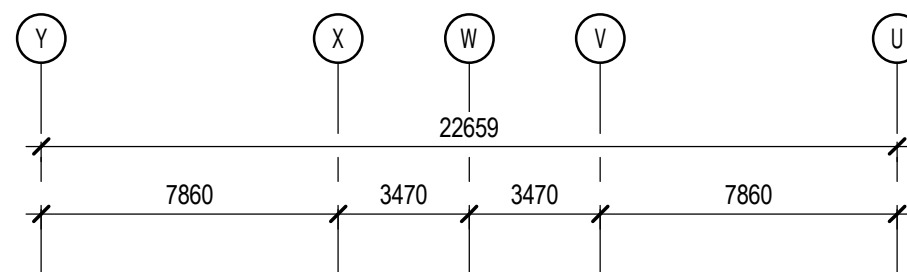
Preliminary  
DO NOT USE FOR  
CONSTRUCTION

DESSINÉ PAR Drawn by  
 ZS CI  
 DATE (aa.mm.jj) 23/03/29  
 TITRE DU DESSIN Drawing Title

VÉRIFIÉ PAR Checked  
 K.P.  
 ÉCHELLE Scale  
 As indicated

**EAST & WEST ELEVATIONS**  
 PREVIOUS REVISION: 0:4  
 CURRENT REVISION: 1:0  
 RÉVISION Revision NO. DESSIN Dwg Number

**1.0 A400**



NORTH-EAST ELEVATION

1:200

3  
A401



NORTH ELEVATION

1:200

2  
A401

# NOTE	DESCRIPTION
1	TOP OF BANK ORDINARY HIGH WATER MARK
2	EXISTING MUNICIPAL MULTIPATH
3	EXISTING UTILITY POLE TO BE REMOVED
4	UNDERGROUND PARKING P1 OUTLINE
5	GROUND FLOOR OUTLINE
6	2ND FLOOR - OUTLINE
7	NEW SIDEWALK
8	EXISTING TRIBUTARIES
9	RETAINING WALL
10	EXISTING UTILITY POLE
11	OVERHEAD WIRES
12	PRIVATE BALCONY
13	PRIVATE TERRACE
14	ELEVATOR MECHANICAL PENTHOUSE
15	BIKE RACK
16	EXISTING FIRE HYDRANT
17	P2 LEVEL - OUTLINE
18	DEPRESSED CURB
19	EXIT STAIR
20	P3 LEVEL - OUTLINE
21	COMMERCIAL TERRACE
22	CANOPY PROFILE
23	WATER TANK ACCESS
24	PERGOLA
25	FIRE DEPARTMENT CONNECTION
26	

**NOTES GÉNÉRALES / General Notes**

- Ces documents d'architecture sont la propriété exclusive de NEUF architectes et ne peuvent être utilisés, reproduits ou copiés sans autorisation écrite préalable. / These architectural documents are the exclusive property of NEUF architects and cannot be used, copied or reproduced without written pre-authorization.
- Les dimensions apparaissant sur ces documents doivent être vérifiées par l'entrepreneur avant le début des travaux. / All dimensions which appear on the documents must be verified by the contractor before to start the work.
- Veuillez aviser l'architecte de toute dimension erreur et/ou divergences entre ces documents et ceux des autres professionnels. / The architect must be notified of all errors, omissions and discrepancies between these documents and those of the others professionals.
- Les dimensions sur ces documents doivent être lues et non mesurées. / The dimensions on these documents must be read and not measured.

ARCHITECTE PAYSAGER Landscape Architect  
**Gino Aiello**  
 50 Carleton Drive, Nepean, ON K2G 5X8  
 T 613 852 1343

CIVIL CIVIL  
**NOVATECH**  
 240 Michael Cowpland Drive, Suite 200, Ottawa, ON K2M 1P6  
 T 613 254 9643 novatech-eng.com

INGÉNIEUR MÉCANIQUE Mechanical Engineer  
**NATIONAL MULTI-RESIDENTIAL INNOVATIVE DESIGN**  
 555 Legget Drive, Tower A, Suite 212, Ottawa, ON K2K 2X3  
 T 613 224 2761 Fax 613 951 0586

INGÉNIEUR EN STRUCTURE Structural Engineer  
**CIMA+**  
 740, rue Notre-Dame O., Montréal, QC H3C 3X6  
 T 514 337 2462

ARCHITECTES Architect  
**NEUF architect(e)s**  
 630, boul. René-Lévesque O. 32e étages, Montréal QC H3B 1S6  
 T 514 847 1117 NEUFarchitectes.com

SCEAU / Seal



CLIENT Client  
**LÉPINE**  
 206-555 Legget Dr., Tower A, Ottawa, ON K2K 2X3  
 T 613 591 9090 F 613 591 9095

COMPANY NAME  
**910 MARCH ROAD**

EMPLACEMENT Location NO PROJET No.  
**910 MARCH ROAD 12712.00**

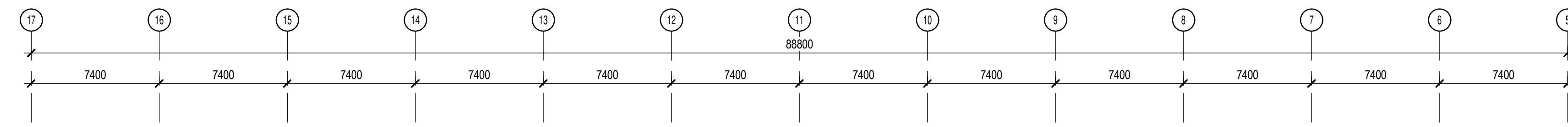
NO RELEASE DATE (aa-mm-jj)  
 0 ISSUED FOR ZONING 2023.01.26  
 1.A ISSUED FOR SITE PLAN 2023.03.29

Preliminary  
DO NOT USE FOR  
CONSTRUCTION

DESSIN PAR Drawn by VERIFIÉ PAR Checked  
**ZS CI K.P.**  
 DATE (aa.mm.jj) 23/03/29 ÉCHELLE Scale  
 As indicated

TITRE DU DESSIN Drawing Title  
**NORTH & SOUTH ELEVATIONS**  
 PREVIOUS REVISION: 1:4  
 CURRENT REVISION: 1:0  
 REVISION Revision NO. DESSIN Dwg Number

**1.0 A401**



SOUTH ELEVATION

1:200

1  
A401

**LINE TYPE LEGEND**

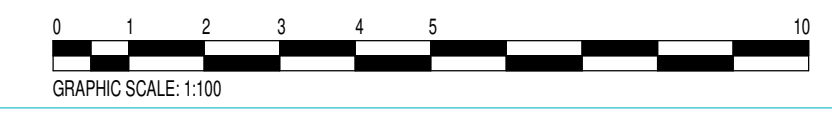
---	PROPERTY LINE
- - - - -	YARD SETBACK
- . - . - . -	ENVIRONMENTAL SETBACK

**EXTERIOR MATERIAL LEGEND**

[Pattern]	PRECAST - SMOOTH FINISH, TYPE 1
[Pattern]	PRECAST - SMOOTH FINISH, TYPE 2
[Pattern]	PRECAST - WOOD PATTERN, TYPE 1
[Pattern]	PRECAST - WOOD PATTERN, TYPE 2
[Pattern]	PRECAST - WOOD PATTERN, TYPE 3
[Pattern]	PRECAST - PATTERN LARGE STONE
[Pattern]	PRECAST - VERTICAL STREEK PATTERN
[Pattern]	METAL CLADDING
[Pattern]	EIFS PANELS
[Pattern]	METAL COVER COLUMNS AND PERGOLA, PAINTED

**PLAN SYMBOL LEGEND**

[Symbol]	RAILING OR GUARDRAIL TYPE - SEE PAGE A303 FOR DETAILS
[Symbol]	GENERAL NOTES - SEE LEGEND FOR DESCRIPTION
[Symbol]	WINDOW OR CURTAIN WALL TYPE - SEE PAGE A803 FOR DETAILS
[Symbol]	WALL TYPE - SEE PAGE A800 FOR DETAILS
[Symbol]	ROOF TYPE - SEE PAGE A800 FOR DETAILS
[Symbol]	DOOR NUMBER - SEE PAGE A800 & A801 FOR DETAILS
[Symbol]	ROOM NUMBER - SEE PLANS FOR DETAILS
[Symbol]	EXTERIOR MATERIAL TYPE - SEE PAGE A400 & A401 FOR LEGEND



Autodesk Docs://12712\_910 MARCH ROAD.MAM\_12712\_ARC\_BDD\_R22.rvt

Autodesk Docs://12712\_910 MARCH ROAD/M&M\_12712\_ARC\_BBD\_R22.rvt

#NOTE	DESCRIPTION
1	TOP OF BANK ORDINARY HIGH WATER MARK
2	EXISTING MUNICIPAL MURTHAL
3	EXISTING UTILITY POLE TO BE REMOVED
4	UNDERGROUND PARKING P1 OUTLINE
5	GROUND FLOOR OUTLINE
6	2ND FLOOR - OUTLINE
7	NEW SIDEWALK
8	EXISTING TRIBUTARIES
9	RETAINING WALL
10	EXISTING UTILITY POLE
11	OVERHEAD WIRES
12	PRIVATE BALCONY
13	PRIVATE TERRACE
14	ELEVATOR MECHANICAL PENTHOUSE
15	BIKE RACK
16	EXISTING FIRE HYDRANT
18	P2 LEVEL - OUTLINE
19	DEPRESSED CURB
20	EXIT STAIR
21	P3 LEVEL - OUTLINE
22	COMMERCIAL TERRACE
23	CANOPY PROFILE
24	WATER TANK ACCESS
25	PERGOLA
26	FIRE DEPARTMENT CONNECTION

**NOTES GÉNÉRALES** General Notes

- Ces documents d'architecture sont la propriété exclusive de NEUF architectes et ne peuvent être utilisés, reproduits ou copiés sans autorisation écrite préalable. / These architectural documents are the exclusive property of NEUF architects and cannot be used, copied or reproduced without written pre-authorization.
- Les dimensions apparaissant aux documents doivent être vérifiées par l'entrepreneur avant le début des travaux. / All dimensions which appear on the documents must be verified by the contractor before to start the work.
- Veuillez aviser l'architecte de toute dimension en erreur et/ou divergences entre ces documents et ceux des autres professionnels. / The architect must be notified of all errors, omissions and discrepancies between these documents and those of the others professionals.
- Les dimensions sur ces documents doivent être lues et non mesurées. / The dimensions on these documents must be read and not measured.

ARCHITECTE PAYSAGER Landscape Architect

**Gino Aiello**  
50 Camelot Drive, Nepean, ON K2G 5X8  
T 613 852 1343

CIVIL Civil

**NOVATECH**  
240 Michael Cowpland Drive, Suite 200, Ottawa, ON K2M 1P6  
T 613 254 9643 novatech-eng.com

INGÉNIEUR MÉCANIQUE Mechanical Engineer

**NATIONAL MULTI-RESIDENTIAL INNOVATIVE DESIGN**  
555 Leggett Drive, Tower A, Suite 212, Ottawa, ON K2K 2X3  
T 613 224 2761 Fax 613 951 0586

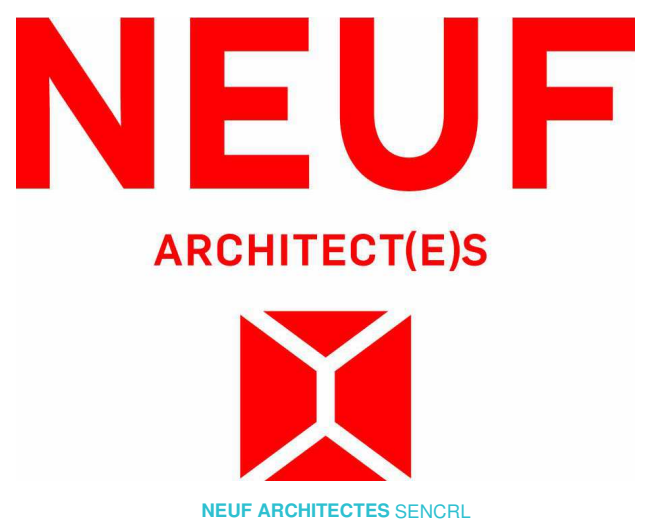
**CIMA+**

INGÉNIEUR EN STRUCTURE Structural Engineer  
740, rue Notre-Dame O., Montréal, QC H3C 3X6  
T 514 337 2462

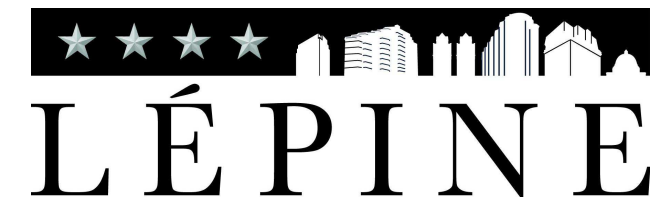
ARCHITECTES Architect

**NEUF architect(e)s**  
630, boul. René-Lévesque O. 32e étages, Montréal QC H3B 1S6  
T 514 847 1117 NEUFarchitectes.com

SCEAU / Seal



CLIENT Client



206-555 Leggett Dr., Tower A, Ottawa, ON K2K 2X3  
T 613 591 9090 F 613 591 9095

COMPANY NAME

**910 MARCH ROAD**

EMPLACEMENT Location  
910 MARCH ROAD

NO PROJET No.  
12712.00

NO	RELEASE	DATE (aa-mm-jj)
0	ISSUED FOR ZONING	2022.01.26
0.1	FOR DESIGN COORDINATION	2022.05.24

DESSINÉ PAR Drawn by  
ZS CI

VÉRIFIÉ PAR Checked  
K.P.

DATE (aa.mm.jj)  
23/03/29

ÉCHELLE Scale  
As indicated

TITRE DU DESSIN Drawing Title

**PARTIAL ELEVATION**

PREVIOUS REVISION: 0.1  
CURRENT REVISION: 1.0  
REVISION Revision

NO. DESSIN Dwg Number

**1.0 A402**

