

Archaeological
Services

Geotechnical
Engineering

Environmental
Engineering

Hydrogeology

Geological
Engineering

Materials Testing

Building Science

patersongroup

ORIGINAL REPORT

Stage 1 and 2 Archaeological Assessment:

910 March Road
Part Lots 11 and 12, Concession 4,
Part 1 Plan 4R24361
Township of March, Carleton County
Ottawa, Ontario

Prepared For
Wexcom Developments c/o
Alison Sterling
The Stirling Group
5509 Canotek Road
Gloucester, ON
K1J 9J8
alison@thestirlinggroup.ca

June 2020
Submitted for Review **May 22, 2020**

PIF: P369-0107-2020
Ben Mortimer, MA (P369)

Paterson Group Inc.
Consulting Engineers
154 Colonnade Road South
Ottawa (Nepean), Ontario
Canada K2E 7J5

Tel: (613) 226-7381
Fax: (613) 226-6344
www.patersongroup.ca

Report: PA1170-REP.01

1.0 Executive Summary

Paterson Group, on behalf of Wexcom Developments c/o The Stirling Group, undertook a Stage 1 and 2 archaeological assessment of the study area located on Part Lots 11 and 12 of Concession 4 in former March Township, Carleton County, now the City of Ottawa, Part 1 of Plan 4R24361 (Map 1). The objectives of the investigation were to assess the archaeological potential of the property in accordance with the Planning Act as Wexcom is developing the property commercial use (Map 2). The archaeological assessment process was requested by the City of Ottawa as a component of a Major Zoning By-law Amendment and Site Plan Control application under the Planning Act.

The Stage 1 assessment included a site inspection, review of the updated Ontario Ministry of Heritage, Sport, Tourism and Culture Industries (MHSTCI) archaeological site databases, a review of relevant environmental, historical and archaeological literature, and primary historical research including: historical maps and aerial photographs.

The Stage 1 assessment determined that the subject property has precontact Aboriginal archaeological potential based on the proximity to Shirley's Creek. Additionally, the study area exhibits historic Euro-Canadian archaeological potential based on its location near historic transportation routes, census records, and historical maps that show the study area was likely occupied from early in the nineteenth century. Notable, the study area contained the late 19th century Scissions house.

The Stage 2 assessment undertaken on June 1, 2020, consisted of test pitting at 5 m intervals and judgmentally to confirm disturbances. No archaeological resources were encountered during the test pit survey and large areas of the property are deeply disturbed.

Based on the results of this investigation it is recommended:

1. No further archaeological study is required for the subject property as delineated in Map 1.

2.0 Table of Contents

1.0 Executive Summary i

2.0 Table of Contents ii

3.0 Project Personnel 2

4.0 Project Context 3

 4.1 Development Context 3

 4.2 Historical Context 3

 4.2.1 Historic Documentation 3

 4.2.2 Pre-Contact Period 3

 4.2.1 Contact Period 5

 4.2.2 Post-Contact Period 5

 4.2.3 Study Area Specific History 8

 4.3 Archaeological Context 9

 4.3.1 Current Conditions 9

 4.3.2 Physiography 9

 4.3.3 Previous Archaeological Assessments 10

 4.3.4 Registered Archaeological Sites and Commemorative Plaques 10

 4.4 Archaeological Potential 11

5.0 Field Methods 12

6.0 Record of Finds 13

7.0 Analysis and Conclusions 14

8.0 Recommendations 14

9.0 Advice on Compliance with Legislation 15

10.0 Closure 16

11.0 Bibliography and Sources 17

12.0 Images 21

13.0 Maps 27

14.0 Appendix A: Photographic Catalogue 36

15.0 Appendix B: Document Catalogue 37

16.0 Appendix C: Map Catalogue 38

3.0 Project Personnel

Licensee	Ben Mortimer, MA (P369)
Field Directors	Ben Mortimer, MA
Field Crew	Duncan Williams (R1108), MA Selena Barré (R1238) Filippo Ronca, MA Christine Conlan, MA
Report Preparation	Ben Mortimer, MA
Archival Research	Ben Mortimer, MA
Report Review	Ben Mortimer, MA
GIS and Mapping	Ben Mortimer, MA

4.0 Project Context

4.1 Development Context

Paterson Group, on behalf of Wexcom Developments (Wexcom) c/o The Stirling Group (Stirling), undertook a Stage 1 and 2 archaeological assessment of the study area located on Part Lots 11 and 12 of Concession 4 in former March Township, Carleton County, now the City of Ottawa, Part 1 of Plan 4R24361 (Map 1). The objectives of the investigation were to assess the archaeological potential of the property in accordance with the Planning Act as Wexcom is developing the property commercial use (Map 2). The archaeological assessment process was requested by the City of Ottawa as a component of a Major Zoning By-law Amendment and Site Plan Control application under the Planning Act.

The City of Ottawa has an archaeological management plan which was developed in 1999, *The Archaeological Resource Potential Mapping Study of the Regional Municipality of Ottawa-Carleton*. The management plan covers the Township of March (Archaeological Services Inc. and Geomatics International Inc. 1999). According to the management plan, the entire study area has archaeological potential (Map 3).

The study area for the Stage 1 and 2 assessment is 2.7 hectares. At the time of the archaeological assessment the study area was owned by Wexcom. Permission to access the study property was granted by Wexcom c/o Stirling prior to the commencement of any field work; no limits were placed on this access.

4.2 Historical Context

4.2.1 Historic Documentation

The subject property is located in the geographic township of March, former County of Carleton. March Township was first surveyed in 1820 and the first settlers in 1819 included retired officers of the Napoleonic Wars, who received plots on the Broken Front along the Ottawa River (Belden 1879). The early history of March is described in *March Past* (Burns et al. 1972), *Families and Heritage Homes of March Township: The Historical Project* (Senior Citizen's Club of March Township 1974-1978), and *The Catholic Community of St. Isidore* (St. Isidore Parish 1987). Other useful resources include, *The Carleton Saga* by Harry and Olive Walker (1968), Courtney Bond's *The Ottawa Country* (1968), and Belden's *Illustrated Historical Atlas of Carleton County* (1879).

4.2.2 Pre-Contact Period

The Ottawa Valley was not hospitable to human occupation until the retreat of glaciers and the draining of the Champlain Sea, some 10,000 years ago. The Laurentide Ice Sheet of the Wisconsinian glacier blanketed the Ottawa area until about 11,000 B.P. At this time the receding glacial terminus was north of the Ottawa Valley, and water from the Atlantic Ocean flooded the region to create the Champlain Sea. The Champlain Sea encompassed the lowlands of Quebec on the north shore of the Ottawa River and most of Ontario east of Petawawa, including the Ottawa Valley and Rideau Lakes. However, by 10,000 B.P. the Champlain Sea was receding and within 1,000 years was gone from Eastern Ontario (Watson 1990:9).

By circa 11,000 B.P., when the Ottawa area was emerging from glaciations and being flooded by the Champlain Sea, northeastern North America was home to what are commonly referred to as the Paleo-Indian people. For Ontario the Paleo-Indian period is divided into the Early Paleo-Indian period (11,000 - 10,400 B.P.) and the Late Paleo-Indian period (10,500-9,400 B.P.), based on changes in tool technology (Ellis and Deller 1990). The Paleo people, who had moved into hospitable areas of southwest Ontario (Ellis and Deller 1990), likely consisted of small groups of exogamous hunter-gatherers relying on a variety of plants and animals who ranged over large territories (Jamieson 1999). The few possible Paleo-Indian period artifacts found, as surface finds or poorly documented finds, in the broader region are from the Rideau Lakes area (Watson 1990) and Thompson's Island near Cornwall (Ritchie 1969:18). In comparison, little evidence exists for Paleo-Indian occupations in the immediate Ottawa Valley, as can be expected given the environmental changes the region underwent, and the recent exposure of the area from glaciations and sea. However, as Watson (1999:38) suggests, it is possible Paleo-Indian people followed the changing shoreline of the Champlain Sea, moving into the Ottawa Valley in the late Paleo-Indian Period, although archaeological evidence is absent.

As the climate continued to warm, the ice sheet receded further allowing areas of the Ottawa Valley to be travelled and occupied in what is known as the Archaic Period (9,500 – 2,900 B.P.). This period is generally characterized by increasing populations, developments in lithic technology (e.g., ground stone tools), and emerging trade networks. Archaic populations remained hunter-gatherers with an increasing emphasis on fishing. Sites from this period in the region include Morrison's Island-2 (BkGg-10), Morrison's Island-6 (BkGg-12) and Allumette Island-1 (BkGg-11) near Pembroke, and the Lamoureaux site (BiFs-2) in the floodplain of the South Nation River (Clermont 1999).

The Woodland Period is characterized by the introduction of ceramics. Populations continued to participate in extensive trade networks that extended across much of North America. Social structure appears to have become increasingly complex with some status differentiation recognized in burials. Towards the end of this period domesticated plants were gradually introduced to the region. This coincided with other changes including the development of semi-permanent villages. The Woodland period is commonly divided into the Early Woodland (1000 – 300 B.C.), Middle Woodland (400 B.C. to A.D. 1000), and the Late Woodland (A.D. 900 – European Contact) periods.

The Early Woodland is typically noted via lithic point styles (i.e., Meadowood bifaces) and pottery types (i.e., Vinette I). Early Woodland sites in the Ottawa Valley region include Deep River (CaGi-1) (Mitchell 1963), Constance Bay I (BiGa-2) (Watson 1972), and Wyght (BfGa-11) (Watson 1980). The Middle Woodland period is identified primarily via changes in pottery style (e.g., the addition of decoration). Some of the best documented Middle Woodland Period sites from the region are from Leamy Lake Park (BiFw-6, BiFw-16) (Laliberté 1999).

The identification of pottery traditions or complexes (Laurel, Point Peninsula, Saugeen) within the Northeast Middle Woodland, the identifiers for the temporal and social organizational changes signifying the Late Woodland Period, subsequent phases within in the Late Woodland, and the overall 'simple' culture history model assumed for Ontario at this time (e.g., Ritchie 1969; Wright 1966, 2004) are much debated in light of newer evidence and improved interpretive models (Engelbrecht 1999; Ferris 1999; Hart 2012; Hart and Brumbach 2003, 2005, 2009; Hart and Englebrecht 2012; Martin 2008; Mortimer 2012). Thus, the shift into the period held as the Late Woodland is not clearly defined, however there are general trends for increasingly sedentary populations, the gradual introduction of agriculture, and changing pottery and lithic styles. However, nearing the time of contact, Ontario was populated with somewhat distinct

regional populations that broadly shared many traits. In the southwest, in good cropland areas, groups were practicing corn-bean-squash agriculture in semi-permanent, often palisaded villages which are commonly assigned to Iroquoian peoples (Wright 2004:1297-1304). On the shield and in other non-arable environments, including portions of the Ottawa Valley, there seems to remain a less sedentary lifestyle often associated with the Algonquian groups noted in the region at contact (Wright 2004:1485-1486).

4.2.1 Contact Period

Initial contact between the Ottawa Valley Algonquian groups and European explorers occurred during Champlain's travels in 1613. At this time the Algonquian people along the Ottawa River Valley, an important and long-standing trade route to the interior, were middle-men in the rapidly expanding fur-trade industry and alliances were formed or reinforced with the French. Early historical accounts note many different Algonquian speaking groups in the region at the time. Of note for the lower Ottawa Valley area were the Kichesipirini (focused around Morrison Island); Matouweskariini (upstream from Ottawa, along the Madawaska River); Weskarini (around the Petite Nation, Lièvre, and Rouge rivers west of Montreal), Kinouchepirini (in the Bonnechere River drainage); and the Onontchataronon, (along the South Nation River) (Joan Holmes & Associates 1993; Morrison 2005; Pilon 2005). However, little archaeological work has been undertaken of contact period Algonquians (Pilon 2005).

Starting in the 1630s and continuing into the 1700s, European disease spread among the Algonquian groups along the Ottawa River, bringing widespread death (Trigger 1986:230). Additionally, up to 1650 warfare and raiding into the lower Ottawa Valley by the Five Nation Iroquois forced the various Algonquin groups from the area (Morrison 2005:26). By 1701 the Iroquois had been driven from most of southern Ontario and the Ottawa Valley was occupied by the Algonquin Nation (Morrison 2005:27-28).

A traditional lifeway was continued by many of the Algonquian groups in the lower Ottawa Valley above Montreal through to the influx of European settlement in the late 1700s and early 1800s. This included bands noted to be living along the Gatineau River and other rivers flowing into the Ottawa. These traditional bands maintained a seasonal round focused on harvesting activities into the 1800s when development pressures and assimilation policies implemented by the colonial government saw Algonquian lands taken up, albeit under increasing protest and without consideration for native claims, for settlement and industry

4.2.2 Post-Contact Period

March Township was first surveyed in 1820, although settlers began arriving in 1819. The township acquired its name at a dinner party held in the Village of Richmond in Goulbourn Township, on August 27th, 1819. In attendance was the Governor General of British North America, Charles Lennox, Duke of Richmond, who passed away the following day reportedly from rabies. The new township that was laid out fronting on the Ottawa River was named after the Duke's son, Charles Gordon-Lennox, Earl of March (Bond 1968:19).

The township is bounded on the northeast by the Ottawa River, the east by Nepean Township, the southeast by Goulbourn Township, the southwest by Huntley Township, and the northwest by Torbolton Township. March Township was originally part of the District of Johnstown. In 1822 it became part of the District of Bathurst, and was incorporated into Carleton County in the 1840s. The 27,993 acres of the township were laid out in seven concessions 7/8 of a mile wide. Only

the first two concessions are full concessions, as the others are all broken by the line of Nepean Township or the Ottawa River (Belden 1879:xlvi).

Settlement in March Township began in 1819 when Colonel Lloyd, a veteran of the British Army against Napoleon in Egypt in 1802, and other half pay officers from the Napoleonic wars were influenced to settle along the Ottawa River rather than in the military settlements of Richmond or Perth. Among the first settlers were Lieutenant Thomas Read, Captain Weatherby, and Captain Benjamin Street of the Royal Navy, and Captain John B. Monk of the army. Free land grants were awarded to discharged military as follows: privates 100 acres, sergeants 200 acres, army lieutenants 500 acres, Royal Navy lieutenants and army captains 800 acres, and Royal Navy captains 1,200 acres. Since the township was not officially surveyed until 1820, many of the new settlers were located on the wrong lots, and some had built houses on other's property, luckily these mishaps were solved amicably (Belden 1879:xlvii).

It was not until 1820 that civilians, who were awarded 100-acre half lots, arrived in March Township. Unlike other townships, March did not provide provisions as to the amount of land that needed to be cleared, the only stipulation was that it be settled. Nor were there requirements for the style of house to be built upon the land. Settlers were also given a kit of tools consisting of necessary equipment and supplies including a blanket, axe, hand saw, spade, shovel, pickaxe, scythe, camp kettle, 12 lbs of nails, and 12 panes of glass. Every retired soldier further received one year of rations (Belden 1879:xlvii).

One civilian of note who settled on the Ottawa River alongside the army and Royal Navy officers was Hamnett Kirkes Pinhey, a civilian merchant from Plymouth, England. Pinhey won distinction during the Napoleonic Wars by getting messages through the French blockade, which later earned him a grant of 1,000 acres along the Ottawa River (Burns et al. 1972:12). With his wife Mary Ann, he settled on Lot 23 of Concessions 6 and 7. With his great wealth he constructed an estate which he named Horaceville, after his son. In 1823, Pinhey built the first grist and saw mills in the township on his land, followed in 1824-1826 by financing the construction St. Mary's, the first Anglican Church, on his land (Burns et al. 1972:4, 12). For his service to the community, the government supplemented Pinhey's land grant with another 1,000 acres. With two mills and a church, the Pinhey estate quickly became an early focus for the community and Pinhey emerged as a community leader, shown by the fact that he was a member of the Legislative Council of Upper Canada, and Township Reeve from 1850-1855 (Belden 1879:xlvii).

While the riverfront was settled by officers, the interior of the township was settled between the 1820s and 1840s mainly by Irish farmers, tradesmen, and lower ranking soldiers. In many cases these settlers received the best arable land in the township, as the soils closer to the river were very shallow (Burns et al. 1972:36). Belden noted that March Township was the poorest in Carleton County in terms of soils, with many areas of exposed bedrock, although there were pockets of good areas with a large number of excellent farms (Belden 1879:xlvi). The first census of the township was undertaken in 1823 by the township clerk Henry Edward, who lived on Lot 22 Concession 4, and enumerated 49 families, a total of 207 people, living within the township (Belden 1879:xlvi; Walker and Walker 1968:254).

During the early settlement of the township the only semblance of a village appeared in the south at what became known as March Corners, with its centre at Lots 10 and 11 of Concession 3 and 4. This hamlet was at the centre of six different roads, and by 1879 had a post office, two general stores, a blacksmith and wagon shop, an orange hall, and the only hotel in the township (Belden 1879:xlvi).

Free land grants in March Township were discontinued in 1824, however, many Irish immigrants continued arriving throughout the 1820s and 1830s (St. Isidore Parish 1987:3). The early Irish Catholic settlers were visited by missionaries from Kingston, Richmond, and Perth. By 1836, there were enough Catholic families to build a log chapel that measured 38' x 23'. It was officially blessed as a Mission of St. Patrick Fallowfield in 1840 by Bishop Ignace Bourget of Montreal. The church was enlarged in 1850 and used until the present church was built in 1887 on two acres land donated by John Lahey on part of Lot 14 Concession 4. The parish was usually referred to as the Mission of March, but in 1883 Archbishop Joseph-Thomas *Duhamel* of Ottawa called it St. Isidore (St. Isidore Parish 1987:3-4).

In 1837, General Lloyd (previously Colonel) initiated action to construct a second Anglican church near the small hamlet of South March. Funds were raised by the community and land donated by John Armstrong and O. Riddell on part of Lot 10 Concession 4. By 1840, St. John's church was completed, and shortly after was visited by John Strachan the Anglican Bishop of Toronto. This church eventually preceded that of St. Mary's and still stands today (Walker and Walker 1968:258).

For numerous years in the early development of the township there were not enough children of school age to necessitate the construction of a schoolhouse. When the need arose, either people were too scattered or too poor to support a school. In 1827, there is reference to a school opened in the home of Mrs. Thomas Read to educate the children of the wealthier families in the township (Burns et al. 1972:61). Sometime later the first hewed log school building was erected on the land of John G. Street, the son of Captain Street, on his land on Lot 19 Concession 7. For the first two years that the school was open, Street paid the schoolteacher himself. The first public school erected in the interior of the township was on John Armstrong's land on Lot 11 Concession 3. The first school teacher was John Younghusband, who lived on Lot 12 Concession 4 (Belden 1879:xlvi). By 1863, there were 6 log schools in the township with a total of 155 students in attendance (Walker and Walker 1968:261).

The first post office was established on Lt. Thomas Read's riverfront property sometime prior to 1825. Mail from Hull took as long as four days to arrive. There were no roads to the post office so residents canoed, walked, or went by horseback to retrieve their mail. In one instance, a man named Henry MacLaren drowned while paddling his canoe to receive a letter from his mother in Scotland. By 1825, settlers near March Corners petitioned for a post office, but it was not granted at the time, consequently Jeremiah Goodman was appointed courier to travel weekly between March Corners and the post office on Read's land to deposit and collect mail. By 1848, a post office opened in March Corners with Goodman as postmaster. By 1864, a post office had opened in the hamlet of Dunrobin north of Constance Lake, with Henry Younghusband as the postmaster (Burns et al. 1972:33). In 1870, the post office on Thomas Read's property burnt down, and was relocated slightly to the south on Lot 20 with W. H. Berry as postmaster. By 1879, this post office was receiving tri-weekly mail, while the post office at March Corners had become more prominent and was receiving daily mail (Belden 1879:xlvi). By the 1880s, there were three additional post offices established at Marchurst, Malwood, and Harwood Plains (Burns et al. 1972:33).

By 1842, *Smith's Canadian Gazetteer* noted a significant increase in population to 831 inhabitants (Burns et al. 1972:13). By 1846, the township produced 6,800 bushels of wheat, 8,900 bushels of oats, 18,700 bushels of potatoes, 700 lbs of butter, and 2,300 lbs of wool. By this time a second sawmill had opened, run by Mr. Headley on Lot 18 Concession 4, while there was still only one gristmill located on Pinhey's land.

March Township reached its boom period in the 1850s and 60s (Burns et al. 1972:43-44). In 1851, there were 1,125 inhabitants in the township. There were a total of 8 stone houses, 1 frame house, 88 log cabins, and 70 shanties (Bond 1968:23). There were 140 farmers actively involved in agriculture on their own land and approximately 70-80 farm labourers. The township had three blacksmiths, four shoemakers, four carpenters, two tailors, two merchants, and one lumber merchant (Burns et al. 1972:44, 49). By 1861, the population had grown to 1,454 living in ten stone houses, three frame houses, and 197 log cabins (Bond 1968:23). A total of 153 farmers farmed 21,200 acres of land. Oats were the dominant crop yielding 31,000 bushels, but the Irish dependence on the potato is seen by the 243 acres of potatoes planted that yielded 25,000 bushels (the surveyor noted this was a low yield for the year due to the prevalence of rot). There was growth within the trades as the township now had a total of five blacksmiths, one harness maker, four inn keepers, seven carpenters, six shoemakers, four tanners (all at McMurtry's tannery on Lot 11 Concession 2), one tailor, three weavers, and one wagon maker (Burns et al. 1972:51-52).

In the summer of 1870, a great fire passed through Carleton County and destroyed much of March Township, although March Corners and Horaceville escaped the flames. Crops, homes, and livestock were burned, though most inhabitants took refuge in rivers and wells. The fire significantly changed the composition of the land as it cleared trees and soil was lost from erosion, altering the drainage system. Swampy areas had dried out and turned into good land for agriculture (Burns et al. 1972:72).

The first railway to pass through the township was lumber and railway baron John Rudolphus Booth's Ottawa, Arnprior, and Renfrew line in 1888. This line eventually connected to the Canada Atlantic Railway which connected Ottawa to Vermont and facilitated transporting lumber from the interior of Ontario to markets in the United States. In 1904, this line was bought by the Grand Trunk Railway and eventually the CNR line. In 1910-1914 William Mackenzie and Donald Mann's Canadian Northern railway was laid through the township. It is now a part of CNR's main line linking Ontario to the West (Burns et al. 1972:30).

4.2.3 Study Area Specific History

Lot 11 Concession 4

The patent for all 200 acres of Lot 11, Concession 4 was granted to Joseph Maxwell on January 12, 1824, who in turn sold it that same day to David Benedict Sr. Benedict Sr. sold it in 1830 to David Jr. in 1830 who then sold it to William Gardiner in 1832. Eliza Gardiner inherited the property on Williams death in 1834 and subsequently transferred it to her husband Albert Hopper, as a gift in 1838. In 1839 Hopper began to subdivide the lot, gifting a 2-acre portion to James Sproule in 1840. He then sold 85 acres, 38 rods to John Goodman in January of 1848 followed by an additional 92 acres, 38 rods of the north west half in April 1848. The south east ½ was sold by Hopper in 1852 to William Hodgins. The small portion of the lot that encompasses the study area within Lot 11 was purchased in 1885 by Samuel Scissions, matching the purchase of a portion of Lot 12 at that time. The Scission family held to portion of the study area within lot 11 well into the 20th century.

Lot 12 Concession 4

On June 12, 1824, the patent for all 200 acres of Lot 12 was granted to Edward Sands Bradley, the son of Captain William Brown Bradley. In 1825, Edward sold the lot to William Montgomery.

That same year, Montgomery sold the north half of Lot 12 to William Armstrong. He sold the south half, including the study area, in 1829 to William B. Bradley Jr. (OLR:AR19). In 1831, Bradley Jr. sold the south half to John Younghusband, the first public school teacher in March Township. With his wife Mary Ashburnen, Younghusband had ten children (Senior Citizen's Club of March Township 1974-1978). Younghusband sold 5 acres along the concession road to John Goodman, the postmaster of March Corners, in 1842. The north half of Lot 12 passed to William Armstrong Jr. in 1877 (OLR). This is the configuration of the lot as seen on the Belden map of 1879 (Map 4), showing Armstrong and Younghusband with houses near Shirley's Brook and another house near the road (that of Goodman). In 1885, Samuel Scissions purchased the Goodman residence and that portion, including the study area, stayed in the Scission family well into the 20th century. In 1899, George H. Younghusband, John's son, purchased the north half of the lot from the Armstrong family. The property stayed in the Younghusband family until the mid-20th century.

Scissions House

Prior to its demolition in October 2019, 910 March Road included a 19th century 1½ story vernacular stone farmhouse influenced by the Gothic Revival style. This was known as the Scissions House and was occupied by the namesake family from its construction until recently. The home was constructed between 1885 and 1890 by John Scissions, the son of Samuel who had given him the land in 1885, shortly after receiving it from Goodman. The 1891 census lists John Scission with his wife Hannah and children John F, Samuel B, Ambrose, Patrick, Hannah, and Joseph residing in a 1½ story home with eight rooms (Statistics Canada 1891). The family also had a farm laborer, Patrick Kenney, living with them. The house passed down to Joseph in 1915 and then to Joseph's daughter Edna Maxwell in 1970 (Cloutts and Collins 2019).

4.3 Archaeological Context

4.3.1 Current Conditions

The study area (approximately 2.7 hectares) consists of an irregularly shaped lot, bound to the north, east, and south by tributaries to Shirley's Brook, and to the west southwest by March Road (Map 5). The area is relatively flat, with moderate slopes with light tree cover leading down to the aforementioned watercourses (Figure 1 and Figure 2). At the time of the assessment the eastern approximate 2/3 of the study area consisted of overgrown lawns, manicured lawn, gravel lanes, asphalt parking areas, abandoned vehicles, and steel outbuildings comprising a depot (Figure 3, Figure 4, and Figure 5). The western 1/3 consisted mainly of manicured and overgrown lawn and disturbance from the recently demolished Scissions House (Figure 5 [foreground], Figure 6, Figure 7, and Figure 8). A 20th century home and gravel drive are present north of the demolished stone house (Figure 9).

4.3.2 Physiography

The study area lies within the broader Ottawa Valley Clay Plains physiographic region (Map 6). The region is characterized by poorly drained topography of clay plains interrupted by ridges of rock or sand that offer moderately better drainage. This topography was influenced by the post glacial sequence Champlain Sea (ca. 10,500 to 8,000 B.C.) that deposited these clay soils and were subsequently covered by sand deposits from the emerging freshwater drainage. Some of these sands were eroded to the underlying clay deposits by later channels of the developing Ottawa River. The sections to the north and south of the Ottawa River are characteristically

different. On the Ontario side there is a gradual slope, although there are also some steep scarps (Chapman and Putnam 2007:205-208).

The study area consists of eroded river courses and Brandon series soils (Map 6), which are composed of poorly draining non-stony clay and silty clay of marine origin (Schut and Wilson 1987:37). They are typically found in level or near-level marine clay plains.

The surficial geology of the study area is characterized by massive well-laminated fine-textured glaciomarine Pleistocene deposits (Map 7).

4.3.3 Previous Archaeological Assessments

Archaeological work in the region has primarily consisted of cultural resource management studies related to specific properties or development projects. Nearby archaeological assessments in the area include the previous Stage 1 assessment which covered the present study area and a broader area including Concession 3, Part Lots 11, 12, 13, and 14, and Concession 4, Part Lots 12 and 13 (Paterson Group 2013), a Stage 1 and 2 assessment of Part Lot 11 Concession 4 (Adams 2004), Stage 1 & 2 Archaeological Assessment of Morgan's Creek Subdivision, located at 760 March Road, Part Lot 10, Concession 4 (Adams 2000a; Golder Associates 2011a), a Stage 3 assessment of a lime Kiln (BiFx-5) (Adams 2000b), a Stage 1-3 assessment of Part lot 17 Concession 3 (Adams 2009b), a Stage 1-3 for the Richardson Ridge Residential Development (Jackson 2009a, 2009b), a Stage 1 and 2 Archaeological Assessment of 30 Richardson Side Road (Golder Associates 2011b), A Stage 1-3 assessment for the Kanata West Business Park (Adams 2009a), and a Stage 1 Archaeological Assessment of Part Lot 20, Concession 4 (Hember 2009).

Paterson Group has recently completed a Stage 1 for the March Road Sanitary Trunk Sewer on Part Lot 10 and 11, Concession 3 and Part Lots 9 and 10, Concession 4 (Paterson Group 2018) and is completing ongoing Stage 2 and 3 assessments just north of the study area at 936 March Road within Part Lot 12, Concession 4. The Stage 2 assessment of 936 March Road identified a 19th century scatter of artifacts, identified as the Armstrong Site (BiFx-25), recommended for an ongoing Stage 3 assessment.

4.3.4 Registered Archaeological Sites and Commemorative Plaques

A search of the Ontario Archaeological Sites Database indicated that four archaeological sites lie within 1 km of the study area. The South March Lime Kiln Site (BiFx-5) is located directly to the southeast of the study area on Lot 11 Concession 3. The Morgan Site (BiFx-23), located to the northwest on Lot 9 Concession 3, is a farmstead first occupied by the Morgan family as early as 1824. The site saw continued occupation well into the late 20th century, if not the 21st (Paterson Group 2020). The 788 March Road Residence site, just to the south of the study area, was a residence formerly located to the rear of a general store owned and operated by George Armstrong starting c. 1897 (Past Recovery 2018). Lastly, the Armstrong Site (BiFx-25), an early to late 19th century site, is a short distance north of the study area and is the subject of ongoing Stage 2 and 3 assessment by Paterson.

No commemorative plaques or monuments are located in the direct vicinity of the subject property, however approximately 5 km to the south west is the historical plaque for Christ Church built in 1838 in neighbouring Huntley Township that was used by Huntley and March parishes until 1853. The historical plaque for Pinhey's Point Historic Site is located approximately 9 km to

the north east and commemorates Hamnett Kirkes Pinhey, one of the first settlers of March Township.

4.4 Archaeological Potential

Based on the Archaeological Resource Potential Map, the entire property has archaeological potential (Archaeological Services Inc. and Geomatics International Inc. 1999) (Map 3).

Potential for pre-contact sites is based on physiographic variables that include distance from the nearest source of water, the nature of the nearest source/body of water, distinguishing features in the landscape (e.g., ridges, knolls, eskers, wetlands), the types of soils found within the area of assessment and resource availability. The study area consists of moderately drained clay soils, and tributaries to Shirley's Creek are located within the study area. Based on current knowledge of the pre-contact archaeology of the Ottawa Valley, there is potential for pre-contact archaeological sites in this area.

Historic records show that this area was mainly rural, but census records, and historic maps show the study area was likely occupied from early in the nineteenth century with both lots being granted in 1824. Four other known historic period archaeological sites are located within a 1 km radius of the study property and the study area contained a late 19th century home. These factors indicate potential for post-contact archaeological sites on the study property.

Archaeological potential can be removed by deep and pervasive disturbance such as major landscaping involving grading below topsoil, building footprints, and major infrastructure development (Section 1.3.2 MHSTCI 2011). Aerial photography from 1976, 1991, 2005, and 2007 show the likely disturbance of a large portion of the property (Map 8). In 1976 the eastern portion of the property appears to be pasture, however by 1991 the area has been cleared and appears to be exposed soil. In 2005, it appears as though some areas are granular lanes and paths while others are simply exposed dirt, however in 2007, most of the eastern part of the property is exposed granular. The pattern of use documented in the imagery likely indicates archaeological potential has been removed, but testing was undertaken to confirm the disturbance as per Standard 2 Section 2.1.8 (MHSTCI 2011).

5.0 Field Methods

The property was not suitable for ploughing as per Standard 1.d. and e. Section 2.1.2 (MHSTCI2011). The western area was shovel tested at 5-meter intervals (Figure 5, Figure 6, and Figure 7) as per Standard 1, Section 2.1.2. (Map 9).

The eastern area, illustrated in the aerial photography (Map 8) as being deeply disturbed, was test pitted judgementslly to confirm disturbance as per Standard 2 Section 2.1.8 (MHSTCI 2011) (Map 9). All tests-pits were a minimum of 30 cm in diameter and were excavated to bedrock or 5 cm into subsoil. All soil was screened using 6 mm mesh screens. All test-pits were examined for cultural features and stratigraphy then backfilled. Shovel testing was expanded up to within 1 m of structures, both intact and ruins (Standard 4, Section 2.1.2).

Driveways, gravel parking areas, and building footprints were not tested due to disturbance as per Standard 2.b, Section 2.1 (MHSTCI 2011) (Figure 4, Figure 8, Figure 9, Figure 10, Figure 11, and Figure 12) (Map 9). Creek beds were not assessed as they are permanently wet as per Standard 2.a.i., Section 2.1. (Map 9).

Photographs were taken during fieldwork to document the current land conditions (see Map 5 for photo locations identified by catalogue number) Standard 1.a., Section 7.8.6 (MHSTCI 2011).

Stage 2 field work took place on June 1, 2020. Weather conditions were sunny with temperatures around 8° Celsius. Permission to access the property was provided by Wexcom c/o Stirling with no limits to access. Photo catalogue, map inventory, and daily field notes (including sketch maps drawn in the field) are listed in Appendix A, B, and C.

Mapping of the extent of landforms, assessment methods, etc. was completed using an iPad with ArcGIS Collector streaming location data from a handheld BadElf Surveyor GNSS GPS with DGPS correction enabled. Mapping of extents was verified and updated in postprocessing using aerial imagery. Average GPS signal accuracy during the field assessment was +/- 2 m.

6.0 Record of Finds

The northern area adjacent to Shirley's Creek consisted of patches of gravelly fill mixed with a clay loam topsoil over a yellow silty clay subsoil and no cultural features. Sand and gravel fill slopes up to south towards the depot occupying most of the eastern part of property. Judgemental testing in the central and eastern parts of the study area (the depot) showed extensive subsurface disturbances. Stratigraphy here was typically granular deposits overlying subsoil. Accordingly, the area is largely disturbed as shown in the aerial photography (Map 8). Along the eastern limits of the study area the soils become more natural but are generally wet and sloped towards creek.

Shovel testing on a 5 m interval of the western portion and around the former Scissions house near March Road (Map 9) revealed compacted levelled fill under sod or long grass, but no artifacts nor intact deposits.

7.0 Analysis and Conclusions

Despite the documented historical era occupation of the property and the potential for precontact Indigenous sites, shovel testing revealed nearly the entire study area to be deeply disturbed by continued development and use throughout the 20th century. Nothing of archaeological significance was found in the study area.

8.0 Recommendations

The Stage 1 assessment determined that the development area had archeological potential for both precontact Indigenous and historical occupations. Stage 2 field assessment found no archaeological resources were present on the property.

Based on the results of this investigation it is recommended that:

1. No further archaeological study is required for the subject property as delineated in Map 1.

9.0 Advice on Compliance with Legislation

- a. This report is submitted to the *Minister of Tourism and Culture* as a condition of licencing in accordance with Part VI of the *Ontario Heritage Act*, R.S.O. 1990, c 0.18. The report is reviewed to ensure that it complies with the standards and guidelines that are issued by the Minister, and that the archaeological fieldwork and report recommendations ensure the conservation, protection and preservation of the cultural heritage of Ontario. When all matters relating to archaeological sites within the project area of a development proposal have been addressed to the satisfaction of the Ministry of Tourism and Culture, a letter will be issued by the ministry stating that there are no further concerns with regard to alterations to archaeological sites by the proposed development.
- b. It is an offence under Sections 48 and 69 of the *Ontario Heritage Act* for any party other than a licenced archaeologist to make any alteration to a known archaeological site or to remove any artifact or other physical evidence of past human use or activity from the site, until such time as a licensed archaeologist has completed archaeological fieldwork on the site, submitted a report to the Minister stating that the site has no further cultural heritage value or interest , and the report has been filed in the Ontario Public Register of Archaeology Reports referred to in Section 65.1 of the *Ontario Heritage Act*.
- c. Should previously undocumented archaeological resources be discovered, they may be a new archaeological site and therefore subject to Section 48 (1) of the *Ontario Heritage Act*. The proponent or person discovering the archaeological resources must cease alteration of the site immediately and engage a licenced consultant archaeologist to carry out archaeological fieldwork, in compliance with Section 48 (1) of the *Ontario Heritage Act*.
- d. The *Cemeteries Act*, R.S.O. 1990 c. C.4 and the *Funeral, Burial and Cremation Services Act*, 2002, S.O. 2002, c.33 (when proclaimed in force) require that any person discovering human remains must notify the police or coroner and the Registrar of Cemeteries at the Ministry of Consumer Services.

10.0 Closure

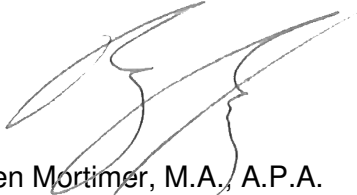
Paterson has prepared this report in a manner consistent with the time limits and physical constraints applicable to this report. No other warranty, expressed or implied is made. The sampling strategies incorporated in this study comply with those identified in the Ministry of Heritage, Sport, Tourism and Culture Industries' *Standards and Guidelines for Consultant Archaeologists* (2011) however; archaeological assessments may fail to identify all archaeological resources.

The present report applies only to the project described in the document. Use of this report for purposes other than those described herein or by person(s) other than Wexcom Developments or their agent(s) is not authorized without review by this firm for the applicability of our recommendations to the altered use of the report.

This report is pending Ministry approval.

We trust that this report meets your current needs. If you have any questions or we may be of further assistance, please contact the undersigned.

Paterson Group Inc.



Ben Mortimer, M.A., A.P.A.
Senior Archaeologist

11.0 Bibliography and Sources

Adams, Nick

2000a *An Archaeological Assessment (Stage 1 & 2) of the Proposed Subdivision Development, Morgan's Grant, Phases 6, 7, 8, 10 & 11.*

2000b *Stage 3 Testing/Documentation of a Lime Kiln (BiFx-5) (in the Former Twp. of March), Part of Lots 9, 10 & 11 Twp. of West Carleton, City of Kanata (former) County of Carleton, R. M. of Ottawa-Carleton.*

2004 *A Stage 1 & 2 Archaeological Assessment of a proposed development property, Part Lot 11, Concession 4, March (Geographic) Twp., City of Ottawa, Ontario.*

2009a *An Archaeological Assessment (Stage 1 to 3) of the proposed "Kanata West Business Park" (Terrace Lands) Part of the North Half, Lot 3, Concession 1 and Part of the South Half, Lot 3, Concession 1, Geographic Township of West Carleton (formerly Township of Huntley), City of Ottawa, County of Carleton, Inverary.*

2009b *An Archaeological Assessment (Stages 1 and 2) of the Proposed Subdivision Part Lot 17, Concession 3, Township of March, County of Carleton, City of Ottawa. Addendum Report (including additional Stage 2 and Stage 3 testing).*

Archaeological Services Inc. and Geomatics International Inc.

1999 *The Archaeological Resource Potential Mapping Study of the Regional Municipality of Ottawa-Carleton: Planning Report.* Archaeological Services Inc. and Geomatics International Inc., Ottawa, Ont.

Belden, H. & Co.

1879 *Illustrated Historical atlas of the county of Carleton (including city of Ottawa), Ont.* Toronto.

Bond, Courtney C. J.

1968 *The Ottawa Country.* National Capital Comm., Ottawa.

Burns, Bernard, Jocelyn Daw, Susan Fielding, Les MacDonald, Robin MacKay, Rhonda Read, and Jody Tucker

1972 *March Past.* March Township Council, Kanata.

Chapman, L. J., and D. F. Putnam

2007 *The Physiography of Southern Ontario.* Ontario Geological Survey, Toronto.

Clermont, N.

1999 *The Archaic Occupation of the Ottawa Valley.* In *Ottawa Valley Prehistory*, edited by J.-L. Pilon, pp. 43-53. Imprimerie Gauvin, Hull.

Cloutts, Sally, and Lesley Collins

2019 *HERITAGE SURVEY AND EVALUATION FORM: 910 March Road, Kanata*, edited by City of Ottawa.

Ellis, C. J., and B. D. Deller

1990 *Paleo-Indians.* In *The Archaeology of Southern Ontario to A.D. 1650*, Vol 5, edited by C. J. Ellis, and N. Ferris, pp. 37-63. Occasional Publications of the London Chapter, OAS, London.

Engelbrecht, W.

1999 Iroquoian Ethnicity and Archaeological Taxa. In *Taming the Taxonomy: Toward a New Understanding of Great Lakes Archaeology*, edited by R.F. Williamson, and Christopher M. Watts, pp. 51-60. eastendbooks, Toronto.

Ferris, Neal

1999 Telling Tales: Interpretive Trends in Southern Ontario Late Woodland Archaeology. *Ontario Archaeology* 68:1-62.

Golder Associates

2011a *Stage 1 & 2 Archaeological Assessment, Morgan's Creek Subdivision, 760 March Road, Kanata, Part Lot 10, Concession 4 March Township, Carleton County, Ontario, Ottawa.*

2011b *Stage 1 and 2 Archaeological Assessment, 30 Richardson Side Road Part Lot 5, Concession 4, Geographic Township of March Carleton County, City of Ottawa, Ottawa.*

Hart, John P.

2012 The Effects of Geographical Distances on Pottery Assemblages and Similarities: A Case Study from Northern Iroquoia. *Journal of Archaeological Science* 39(1):128–134. DOI: 10.1016/j.jas.2011.09.010.

Hart, John P., and Hetty Jo Brumbach

2003 The Death of Owasco. *American Antiquity* 68(4):737-752.

2005 Cooking Residues, AMS Dates, and the Middle-to-Late Woodland Transition in Central New York. *Northeast Anthropology* 69(Spring):1-34.

2009 On Pottery Change and Northern Iroquoian Origins: An Assessment from the Finger Lakes Region of Central New York. *Journal of Anthropological Archaeology* 28:367-381.

Hart, John P., and W. Englebrecht

2012 Northern Iroquoian Ethnic Evolution: A Social Network Analysis. *Journal of Archaeological Method and Theory* 19(2):322–349. DOI: 10.1007/s10816-011-9116-1.

Hember, Ian

2009 *Stage I Archaeological Assessment Part Lot 20, Concession IV City of Ottawa (Former Township of March / Goulbourn Regional Municipality of Ottawa-Carleton), Ottawa.*

Jackson, Lawrence

2009a *Stage 1 and 2 Archaeological Assessment of the Southwest Part of the Richardson Ridge Property, Part Lot 6, Concession 1, Geographic Township of March, City of Kanata, Port Hope, On.*

2009b *Stage 2 & 3 Archaeological Assessment of Richardson Ridge Property, Part Lots 5, 6, and 7 and Part of the Roah Allowance Between Lots 5 and 6, Cconcession 1, Geographic Township of March, City of Kanata, Port Hope, ON.*

Jamieson, S.

1999 A Brief History of Aboriginal Social Interactions in Southern Ontario and Their Taxonomic Implications. In *Taming the Taxonomy: Toward a New Understanding of Great Lakes Archaeology*, edited by R.F. Williamson, and Christopher M. Watts, pp. 175-192. eastendbooks, Toronto.

Joan Holmes & Associates

1993 Executive Summary. In *Algonquins of Golden Lake Claim*. Ontario Native Affairs Secretariat.

- Laliberté, Marcel
1999 The Middle Woodland in the Ottawa Valley. In *Ottawa Valley Prehistory*, edited by J.-L. Pilon, pp. 69-81. Imprimerie Gauvin, Hull.
- Martin, Scott W. J.
2008 Languages Past and Present: Archaeological Approaches to the Appearance of Northern Iroquoian Speakers in the Lower Great Lakes Region of North America. *American Antiquity* 73(3):441-463.
- Ministry of Tourism Culture and Sport
2011 Standards and Guidelines for Consultant Archaeologists, edited by Ministry of Tourism and Culture. Queen's Printer for Ontario.
- Mitchell, B.M.
1963 Occurrence of Overall Corded Pottery in the Upper Ottawa Valley, Canada. *American Antiquity* 29(1):114-115.
- Morrison, James
2005 Algonquin History in the Ottawa River Watershed. *Ottawa River: A Background Study for Nomination of the Ottawa River Under the Canadian Heritage Rivers System*:17-36.
- Mortimer, B.
2012 Whos Pot is This? Analysis of Middle to Late Woodland Ceramics From the Kitchikewana Site, Georgian Bay Islands National Park of Canada. Unpublished M.A. Thesis, Department of Anthropology, Trent University, Peterborough.
- Past Recovery
2018 *Stage 1 and 2 Archaeological Assessments 788 March Road, Ottawa – Site Plan Application. Part of Lot 10, Concession 4 Geographic Township of March Now City of Ottawa (P336-0219-2018)*, Maberly, Ontario.
- Paterson Group
2013 *Stage 1 Archaeological Assessment: Kanata North Urban Expansion Study Area, Concession 3, Part Lots 11, 12, 13, and 14, And Concession 4, Part Lots 12 and 13, Geographic Township of March, City of Ottawa, Ontario*, Ottawa.

2018 *Stage 1 Archaeological Assessment, March Road Sanitary Trunk Sewer, March Road, Ottawa, Part Lot 10 and 11, Concession 3, Part Lots 9 and 10, Concession 4, Geographic Township of March, City of Ottawa, Ontario*, Ottawa.

2020 *Stage 2 and 3 Archaeological Assessments: Part 1 Plan 4R-7867, Part 5/6/7/8/9 Plan 4R-30711 Concession 3, Part Lots 13 and 14, Geographic Township of March, City of Ottawa, Ontario*, P369-0075-2018, P369-0090-2019, P369-0091-2019, Ottawa.
- Pilon, J.-L.
2005 Ancient History of the Lower Ottawa River Valley. *Ottawa River: A Background Study for Nomination of the Ottawa River Under the Canadian Heritage Rivers System*:12-17.
- Ritchie, W. A.
1969 *The Archaeology of New York State*. Revised ed. The Natural History Press, Garden City.
- Schut, L.W., and E.A. Wilson
1987 *The Soils of the Regional Municipality of Ottawa-Carleton (Excluding the Ottawa Urban Fringe)*. Soil Survey Report No. 58 of the Ontario Institute of Pedology. Agriculture Canada, Ottawa.

Senior Citizen's Club of March Township

1974-1978 *Families and Heritage Homes of March Township: The Historical Project*, Kanata.

St. Isidore Parish

1987 *The Catholic Community of St. Isidore*. GS Photographic Industries, Markham.

Statistics Canada

1891 Census of Canada <http://www.collectionscanada.gc.ca/databases/census-1891/index-e.html?PHPSESSID=vcme2kelmj1gs39p0q3rf75j45>, accessed 2012.

Trigger, B. G.

1986 *Natives and Newcomers: Canada's "Heroic Age" Reconsidered*. McGill-Queen's University Press, Montreal.

Walker, H. J., and O. Walker

1968 *The Carleton Saga*. The Runge Press Ltd., Ottawa, Ont.

Watson, Gordon D.

1972 A Woodland Indian Site at Constance Bay, Ontario. *Ontario Archaeology* 18:1-24.

1980 The Wyght Site: A Multicomponent Woodland Site on the Lower Rideau Lake, Leeds County, Ontario Unpublished M.A. Thesis, Department of Anthropology, Trent University, Peterborough.

1990 Paleo-Indian and Archaic Occupations of the Rideau Lakes. *Ontario Archaeology* 50:5-26.

1999 The Paleo-Indian Period in the Ottawa Valley. In *Ottawa Valley Prehistory*, edited by J.-L. Pilon, pp. 28-41. Imprimerie Gauvin, Hull.

Wright, James V.

1966 *The Ontario Iroquois Tradition*. Bulletin 210. National Museum of Canada, Ottawa.

2004 *A History of the Native People of Canada: Volume III (A.D. 500 - European Contact)*. National Museum of Canada Mercury Series, Archaeological Survey of Canada Paper No. 152. Canadian Museum of Civilization, Hull.

12.0 Images



Figure 1: Creek along the northern side of the site (PA1170-09E).



Figure 2: Creek and adjacent commercial in background along the eastern boundary (PA1170-35E).



Figure 3: Outbuildings forming part of the depot within the western portion (PA1170-11E).



Figure 4: Outbuilding and associated gravel drive entrance from March Road near southern extent (PA1170-47E).



Figure 5: Overview of depot outbuildings and lawn fronting March Road (PA1170-02E).



Figure 6: Shovel testing in the north west corner near March Road looking south. (PA1170-07E)



Figure 7: Manicured lawn at southwestern corner adjacent to March Road (PA1170-60E).



Figure 8: Deeply disturbed area where the Scissions' house once stood (PA1170-04E).



Figure 9: Extant home in near northern boundary (PA1170-05E).



Figure 10: Exposed granular surface attesting to disturbances underlying the overgrowth throughout the western portion (PA1170-21E)

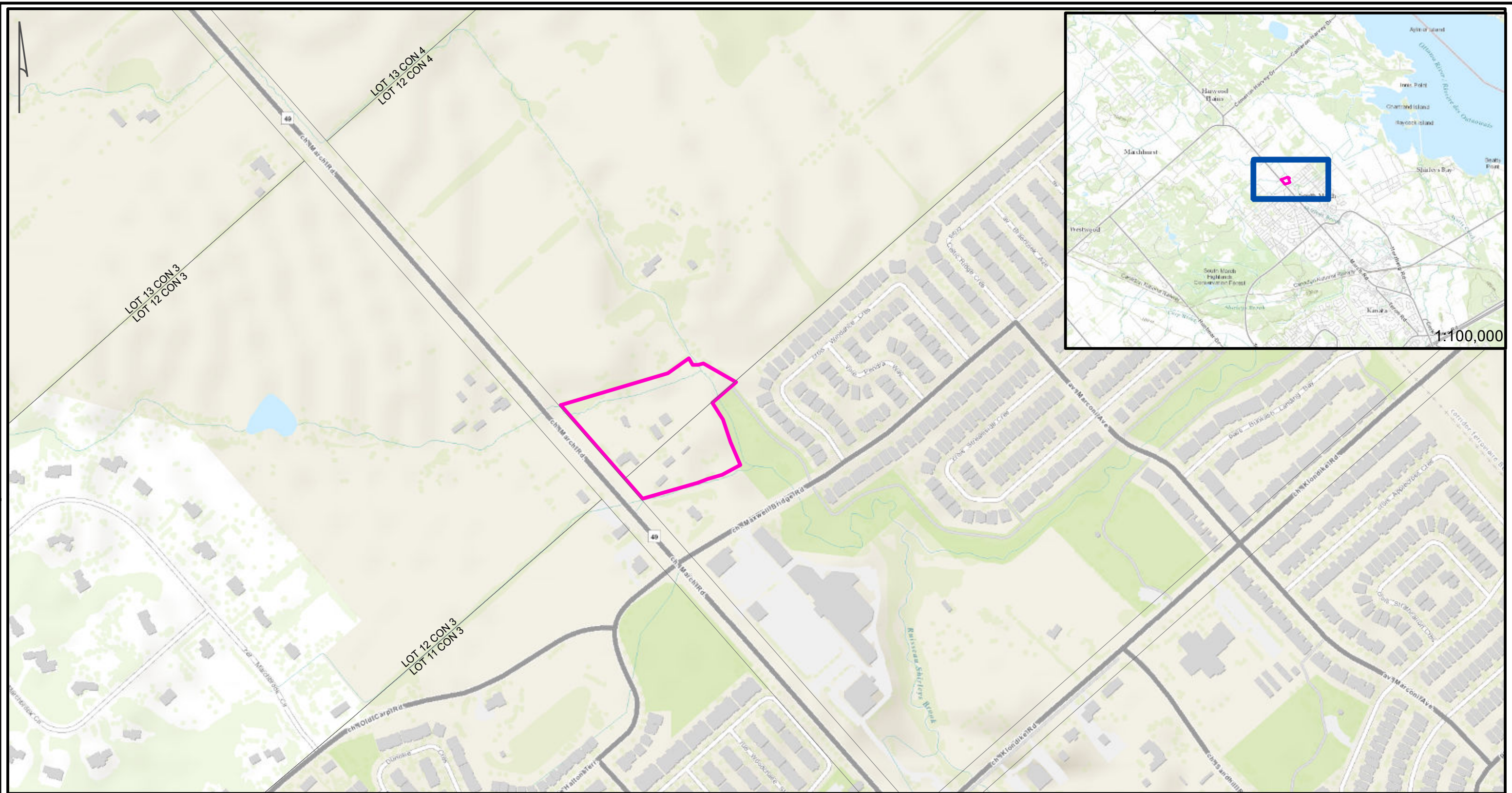


Figure 11: Boulders delineating parking area and gravel parking showing though overgrowth near eastern limits (PA1170-32E).

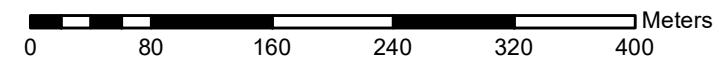


Figure 12: Example of exposed disturbances in the western portion (PA1170-28E).

13.0 Maps



 DEVELOPMENT AREA



REFERENCES:
 PROJECTION: TRANSVERSE MERCATOR DATUM NAD 83, UTM ZONE 18
 SERVICE LAYER CREDITS: CITY OF OTTAWA
 SOURCES: ESRI, HERE, GARMIN, INTERMAP, INCREMENT P CORP., GEBCO, USGS, FAO, NPS, NRCAN, GEOBASE, IGN, KADASTER NL, ORDNANCE SURVEY, ESRI JAPAN, METI, ESRI CHINA (HONG KONG), (C) OPENSTREETMAP CONTRIBUTORS, AND THE GIS USER COMMUNITY

paterson group
 consulting engineers
 154 Colonnade Road South, Ottawa, Ontario K2E 7J5

Scale	1:5,000	Project	PA1170
Des	BM	Borden	NONE
Drawn	BM		
Chkd	BM		

STAGE 1 AND 2 ARCHAEOLOGICAL ASSESSMENT
 910 MARCH ROAD
 OTTAWA, ON

LOCATION

File:	PA1170 PIF
Date:	2020-06-15
Map:	1

CONCEPT PLAN
 DRAWING IS FOR DISCUSSION PURPOSES ONLY
 DRAWING TO BE CONFIRMED UPON RECEIPT OF
 EXISTING CONDITIONS SURVEY/TOPO:
 PLOT DATE:
 2019.12.10

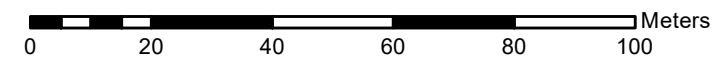


SITE DATA				
ITEM	UNIT	VALUE	UNIT	VALUE
TOTAL AREA	SQ. METERS	170,488	SQ. FEET	4,111,234
DEVELOPMENT AREA	SQ. METERS	170,488	SQ. FEET	4,111,234
PERCENT DEVELOPMENT	%	100	%	100
PERCENT OPEN SPACE	%	0	%	0
PERCENT PARKING	%	0	%	0
PERCENT GREEN SPACE	%	0	%	0
PERCENT IMPERVIOUS	%	0	%	0
PERCENT PAVED	%	0	%	0
PERCENT ASPHALT	%	0	%	0
PERCENT CONCRETE	%	0	%	0
PERCENT GRAVEL	%	0	%	0
PERCENT SAND	%	0	%	0
PERCENT SILT	%	0	%	0
PERCENT CLAY	%	0	%	0
PERCENT ORGANIC	%	0	%	0
PERCENT ROCK	%	0	%	0
PERCENT WATER	%	0	%	0
PERCENT AIR	%	0	%	0
PERCENT SOIL	%	0	%	0
PERCENT VEGETATION	%	0	%	0
PERCENT BUILT UP	%	0	%	0
PERCENT OPEN	%	0	%	0
PERCENT UNDEVELOPED	%	0	%	0
PERCENT DEVELOPED	%	0	%	0
PERCENT IMPROVED	%	0	%	0
PERCENT UNIMPROVED	%	0	%	0
PERCENT CROPPED	%	0	%	0
PERCENT UNCROPPED	%	0	%	0
PERCENT FORESTED	%	0	%	0
PERCENT UNFORESTED	%	0	%	0
PERCENT WETLAND	%	0	%	0
PERCENT NON WETLAND	%	0	%	0
PERCENT WATER BODIES	%	0	%	0
PERCENT NON WATER BODIES	%	0	%	0
PERCENT OPEN SPACE	%	0	%	0
PERCENT PARKING	%	0	%	0
PERCENT GREEN SPACE	%	0	%	0
PERCENT IMPERVIOUS	%	0	%	0
PERCENT PAVED	%	0	%	0
PERCENT ASPHALT	%	0	%	0
PERCENT CONCRETE	%	0	%	0
PERCENT GRAVEL	%	0	%	0
PERCENT SAND	%	0	%	0
PERCENT SILT	%	0	%	0
PERCENT CLAY	%	0	%	0
PERCENT ORGANIC	%	0	%	0
PERCENT ROCK	%	0	%	0
PERCENT WATER	%	0	%	0
PERCENT AIR	%	0	%	0
PERCENT SOIL	%	0	%	0
PERCENT VEGETATION	%	0	%	0
PERCENT BUILT UP	%	0	%	0
PERCENT OPEN	%	0	%	0
PERCENT UNDEVELOPED	%	0	%	0
PERCENT DEVELOPED	%	0	%	0
PERCENT IMPROVED	%	0	%	0
PERCENT UNIMPROVED	%	0	%	0
PERCENT CROPPED	%	0	%	0
PERCENT UNCROPPED	%	0	%	0
PERCENT FORESTED	%	0	%	0
PERCENT UNFORESTED	%	0	%	0
PERCENT WETLAND	%	0	%	0
PERCENT NON WETLAND	%	0	%	0
PERCENT WATER BODIES	%	0	%	0
PERCENT NON WATER BODIES	%	0	%	0

LEGEND	
[Symbol]	PROPERTY LINE
[Symbol]	BOUNDARY LINE
[Symbol]	EXISTING CURB
[Symbol]	EXISTING DRIVE
[Symbol]	EXISTING SIDEWALK
[Symbol]	EXISTING ASPHALT
[Symbol]	EXISTING CONCRETE
[Symbol]	EXISTING GRAVEL
[Symbol]	EXISTING SAND
[Symbol]	EXISTING SILT
[Symbol]	EXISTING CLAY
[Symbol]	EXISTING ORGANIC
[Symbol]	EXISTING ROCK
[Symbol]	EXISTING WATER
[Symbol]	EXISTING AIR
[Symbol]	EXISTING SOIL
[Symbol]	EXISTING VEGETATION
[Symbol]	EXISTING BUILT UP
[Symbol]	EXISTING OPEN
[Symbol]	EXISTING UNDEVELOPED
[Symbol]	EXISTING DEVELOPED
[Symbol]	EXISTING IMPROVED
[Symbol]	EXISTING UNIMPROVED
[Symbol]	EXISTING CROPPED
[Symbol]	EXISTING UNCROPPED
[Symbol]	EXISTING FORESTED
[Symbol]	EXISTING UNFORESTED
[Symbol]	EXISTING WETLAND
[Symbol]	EXISTING NON WETLAND
[Symbol]	EXISTING WATER BODIES
[Symbol]	EXISTING NON WATER BODIES



DEVELOPMENT AREA



REFERENCES:
 PROJECTION: TRANSVERSE MERCATOR DATUM NAD 83, UTM ZONE 18
 SERVICE LAYER CREDITS: CONCEPT PLAN DATED 2019/12/10 PROVIDED BY STIRLING GROUP

paterson group
 consulting engineers
 154 Colonnade Road South, Ottawa, Ontario K2E 7J5

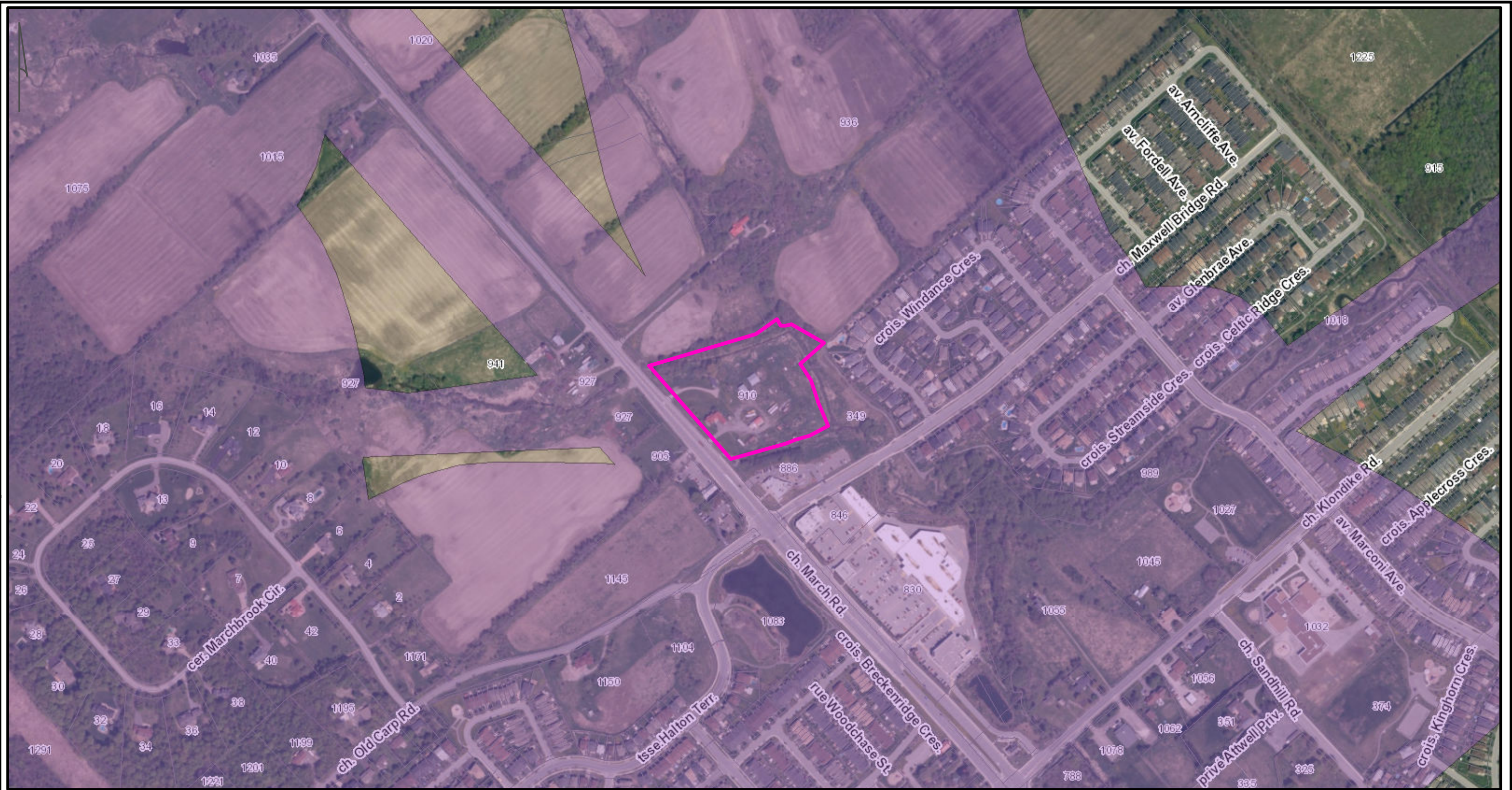
Scale 1:1,250
 Des BM
 Drawn BM
 Chkd BM

Project PA1170
 Borden NONE

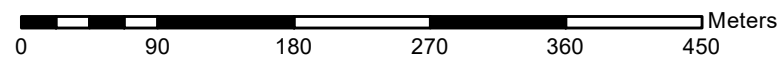
STAGE 1 AND 2 ARCHAEOLOGICAL ASSESSMENT
 910 MARCH ROAD
 OTTAWA, ON

CONCEPT PLAN

File: PA1170 DM
 Date: 2020-06-16
 Map: 2



DEVELOPMENT AREA
 Archaeological Potential / Potentiel archéologique



REFERENCES:
 PROJECTION: TRANSVERSE MERCATOR DATUM NAD 83, UTM ZONE 18
 SERVICE LAYER CREDITS: ARCHAEOLOGICAL POTENTIAL FROM ARCHAEOLOGICAL SERVICES INC. AND GEOMATICS INTERNATIONAL INC. 1999

paterson group
 consulting engineers
 154 Colonnade Road South, Ottawa, Ontario K2E 7J5

Scale	1:5,000	Project	PA1170
Des	BM	Borden	NONE
Drawn	BM		
Chkd	BM		

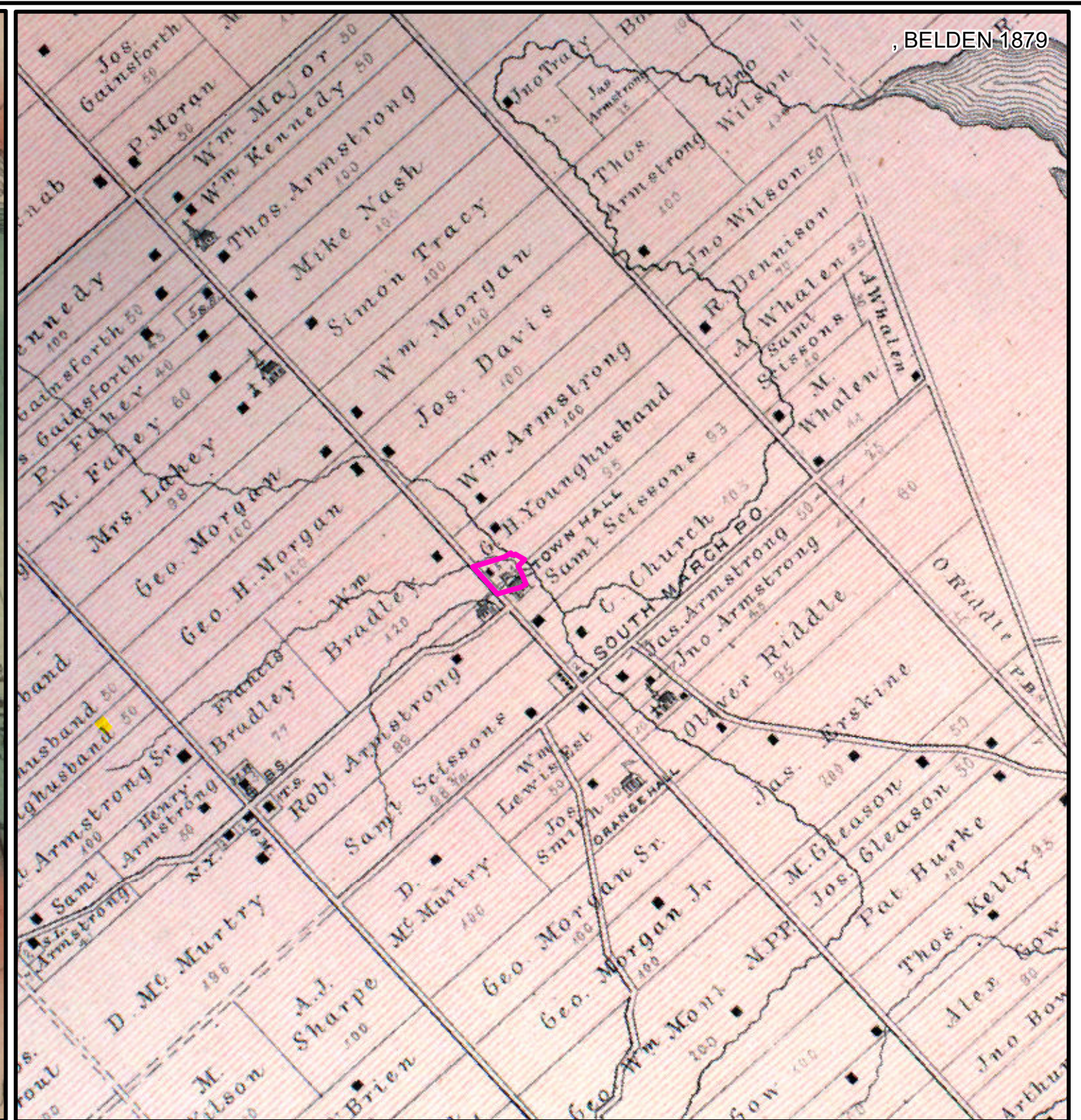
STAGE 1 AND 2 ARCHAEOLOGICAL ASSESSMENT
 910 MARCH ROAD
 OTTAWA, ON

ARCHAEOLOGICAL POTENTIAL

File:	PA1170 POTENTIAL
Date:	2020-06-16
Map:	3

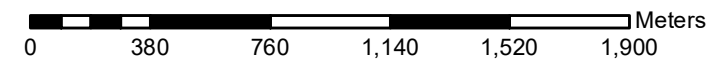


WALLING 1863



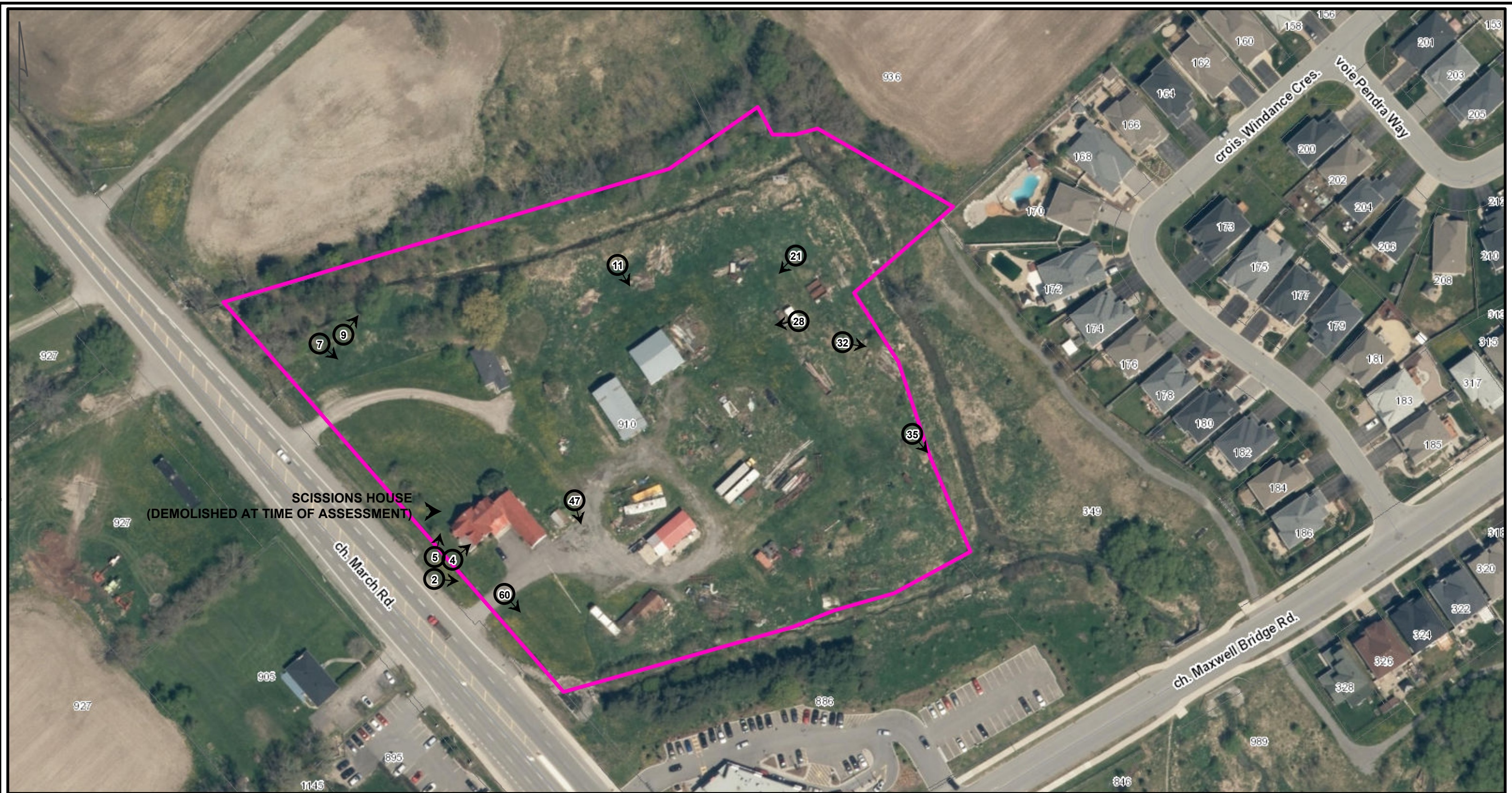
BELDEN 1879

 DEVELOPMENT AREA



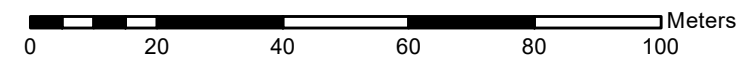
REFERENCES:

PROJECTION: TRANSVERSE MERCATOR DATUM NAD 83, UTM ZONE 18
 SERVICE LAYER CREDITS: WALLING 1863, BELDEN 1879



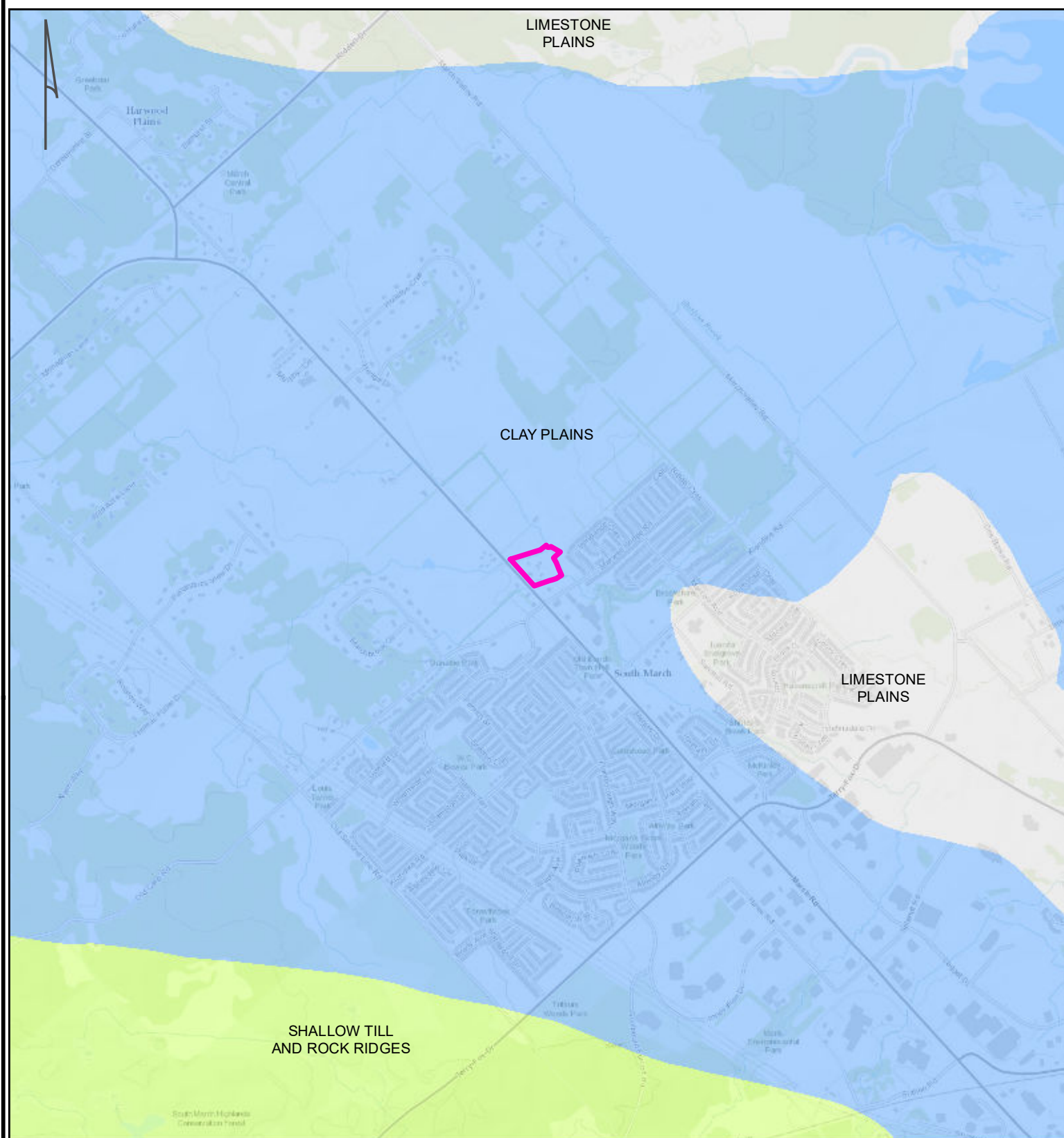
 DEVELOPMENT AREA

 PHOTO LOCATION, DIRECTION, AND CATALOGUE NUMBER



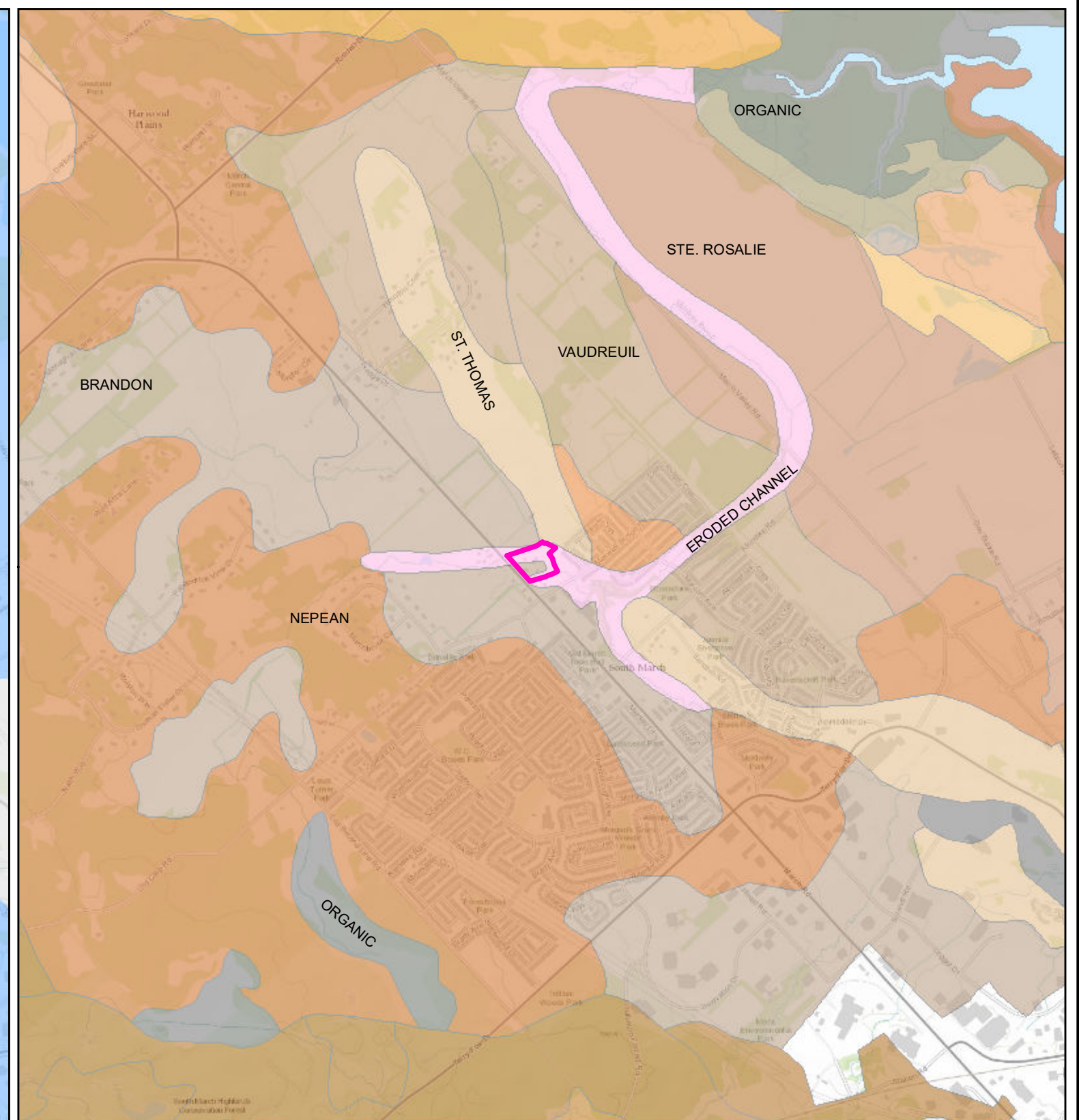
REFERENCES:

PROJECTION: TRANSVERSE MERCATOR DATUM NAD 83, UTM ZONE 18
 SERVICE LAYER CREDITS:



PHYSIOGRAPHY (CHAPMAN AND PUTNAM 2007)

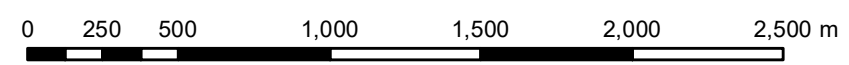
DEVELOPMENT AREA

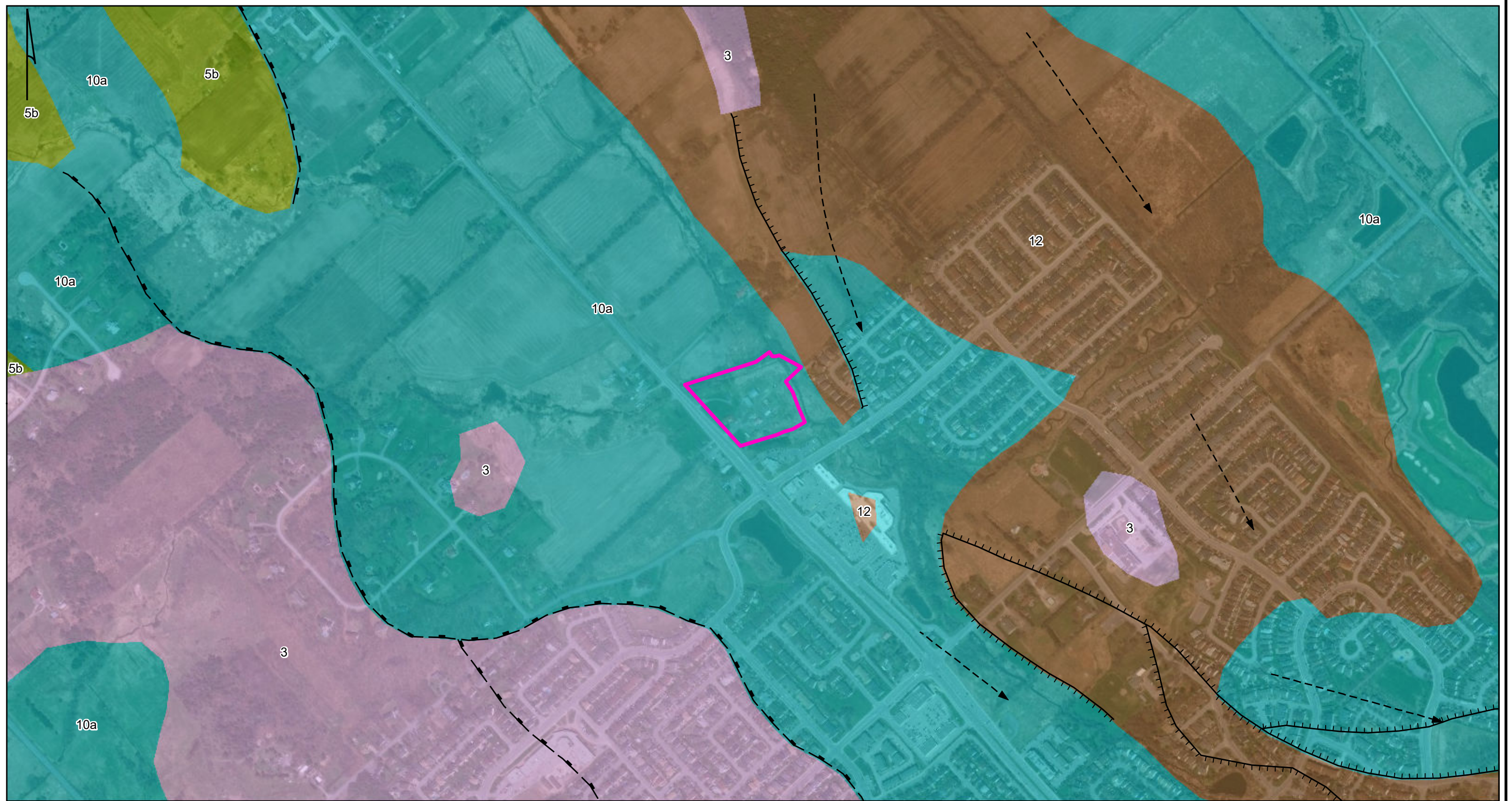


SOILS (ONTARIO MINISTRY OF AGRICULTURE AND FOOD, 2003)

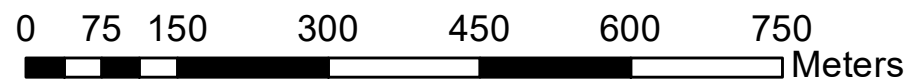
References:

PROJECTION: TRANSVERSE MERCATOR DATUM NAD 83, UTM ZONE 18
 SERVICE LAYER CREDITS: SOURCES: ESRI, HERE, GARMIN, INTERMAP, INCREMENT P CORP., GEBCO, USGS, FAO, NPS, NRCAN, GEOBASE, IGN, KADASTER NL, ORDANCE SURVEY, ESRI JAPAN, METI, ESRI





- STUDY AREA
- SURFICIAL GEOLOGY**
- BEDROCK ESCARPMENT
- MELTWATER CHANNEL
- TERRACE
- 3: PALEOZOIC BEDROCK
- 5B: STONE-POOR, CARBONATE-DERIVED SILTY TO SANDY TILL
- 10A: MASSIVE-WELL LAMINATED
- 12: OLDER ALLUVIAL DEPOSITS



REFERENCES

PROJECTION: TRANSVERSE MERCATOR DATUM NAD 83, UTM ZONE 18
 SURFICIAL GEOLOGY DATA FROM MINISTRY OF NORTHERN DEVELOPMENT, MINES AND FORESTRY (2010)
 SERVICE LAYER CREDITS: SOURCE: ESRI, DIGITAL GLOBE, GEOEYE, EARTHSTAR GEOGRAPHICS, CNES/AIRBUS DS, USDA, USGS, AEROGRIID, IGN, AND THE GIS USER COMMUNITY
 ONTARIO GEOLOGICAL SURVEY 2010. SURFICIAL GEOLOGY OF SOUTHERN ONTARIO; ONTARIO



1971



1991

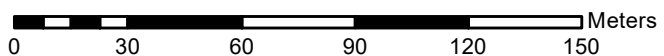


2005



2007

 DEVELOPMENT AREA



REFERENCES:

PROJECTION: TRANSVERSE MERCATOR DATUM NAD 83, UTM ZONE 18
 SERVICE LAYER CREDITS: AERIAL IMAGERY FROM GEOOTTAWA



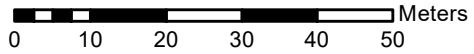
DEVELOPMENT AREA

EXCLUDED

- DEEPLY DISTURBED (SCISSIONS HOUSE FOOTPRINT)
- DEEPLY DISTURBED DRIVEWAYS
- DEEPLY DISTURBED EXTANT BUILDING FOOTPRINT
- PERMANENTLY WET

TESTING METHOD

- SHOVEL TEST (5m INTERVAL)
- SHOVEL TEST (JUDGMENTAL TO CONFIRM DISTURBANCE)



REFERENCES:

PROJECTION: TRANSVERSE MERCATOR DATUM NAD 83, UTM ZONE 18
 SERVICE LAYER CREDITS: GEOOTTAWA

14.0 Appendix A: Photographic Catalogue

CATALOGUE	COMMENT	DATE TAKEN	BEARING	PHOTOGRAPHER
PA1170-01E	Front of property near March Rd.	2020-06-01	130	D. Williams
PA1170-02E	Depot area	2020-06-01	95	D. Williams
PA1170-03E	Front of property near March Rd.	2020-06-01	12	D. Williams
PA1170-04E	Disturbed area from house demolition	2020-06-01	49	D. Williams
PA1170-05E	Disturbed area from house demolition	2020-06-01	13	D. Williams
PA1170-06E	Testing near March Road	2020-06-01	150	D. Williams
PA1170-07E	Testing near March Road	2020-06-01	130	D. Williams
PA1170-08E	Typical soil/gravel encountered	2020-06-01	144	D. Williams
PA1170-09E	Creek on North side	2020-06-01	37	D. Williams
PA1170-10E	Steep slope from creek on north side	2020-06-01	10	D. Williams
PA1170-11E	Outbuildings at depot	2020-06-01	150	D. Williams
PA1170-12E	Shovel testing along north side with extant house in background.	2020-06-01	218	D. Williams
PA1170-13E	Demolished outbuilding	2020-06-01	106	D. Williams
PA1170-14E	Low lying creek course along northeastern edge	2020-06-01	58	D. Williams
PA1170-15E	Low lying creek course along northeastern edge	2020-06-01	311	D. Williams
PA1170-16E	Low lying creek course along northeastern edge	2020-06-01	52	D. Williams
PA1170-17E	Log outbuilding in depot	2020-06-01	213	D. Williams
PA1170-18E	Overview of eastern area	2020-06-01	133	D. Williams
PA1170-19E	Overview of eastern area	2020-06-01	185	D. Williams
PA1170-20E	Overview of eastern area	2020-06-01	61	D. Williams
PA1170-21E	Gravel surface in eastern area	2020-06-01	224	D. Williams
PA1170-22E	Overview of eastern area	2020-06-01	124	D. Williams
PA1170-23E	Overview of eastern area	2020-06-01	138	D. Williams
PA1170-24E	Creek on east side	2020-06-01	146	D. Williams
PA1170-25E	Disturbances in eastern extent	2020-06-01	213	D. Williams
PA1170-26E	Overview of eastern area	2020-06-01	199	D. Williams
PA1170-27E	Overview of eastern area	2020-06-01	204	D. Williams
PA1170-28E	Disturbances in eastern extent	2020-06-01	262	D. Williams
PA1170-29E	Overview of eastern area	2020-06-01	225	D. Williams
PA1170-30E	Shovel testing sporadically in eastern area	2020-06-01	196	D. Williams
PA1170-31E	Shovel testing sporadically in eastern area	2020-06-01	200	D. Williams
PA1170-32E	Gravel parking area with large boulders	2020-06-01	100	D. Williams
PA1170-33E	Overview of eastern area	2020-06-01	232	D. Williams
PA1170-34E	Overview of eastern area	2020-06-01	146	D. Williams
PA1170-35E	Creek along eastern boundary	2020-06-01	140	D. Williams
PA1170-36E	Creek along eastern boundary	2020-06-01	1	D. Williams
PA1170-37E	Creek along eastern boundary	2020-06-01	36	D. Williams

CATALOGUE	COMMENT	DATE TAKEN	BEARING	PHOTOGRAPHER
PA1170-38E	Overview of southeastern area	2020-06-01	134	D. Williams
PA1170-39E	Overview of depot area	2020-06-01	257	D. Williams
PA1170-40E	Overview of depot area	2020-06-01	201	D. Williams
PA1170-41E	Overview of depot area	2020-06-01	239	D. Williams
PA1170-42E	Overview of depot area	2020-06-01	286	D. Williams
PA1170-43E	Overview of depot area with gravel parking lot	2020-06-01	356	D. Williams
PA1170-44E	Overview of depot area	2020-06-01	329	D. Williams
PA1170-45E	Overview of depot area	2020-06-01	320	D. Williams
PA1170-46E	Overview of depot area and gravel lanes	2020-06-01	159	D. Williams
PA1170-47E	Gravel parking area	2020-06-01	165	D. Williams
PA1170-48E	Gravel entrance and lawn near March Road	2020-06-01	186	D. Williams
PA1170-49E	Asphalt and cement pad beside the demolished Scissions house area	2020-06-01	282	D. Williams
PA1170-50E	Disturbances in western area with lawn	2020-06-01	27	D. Williams
PA1170-51E	Lawn area leading into eastern area with shed	2020-06-01	30	D. Williams
PA1170-52E	Extant house and gravel driveway	2020-06-01	341	D. Williams
PA1170-53E	Overgrown rear yard of extant house	2020-06-01	169	D. Williams
PA1170-54E	Log outbuilding in depot	2020-06-01	225	D. Williams
PA1170-55E	Overview of division between eastern and western areas looking at depot	2020-06-01	138	D. Williams
PA1170-56E	testing lawn area near March Road	2020-06-01	258	D. Williams
PA1170-57E	testing lawn area new extant house	2020-06-01	38	D. Williams
PA1170-58E	asphalt parking area off of March Road	2020-06-01	344	D. Williams
PA1170-59E	Culvert for creek passing under March Road at southern extent	2020-06-01	166	D. Williams
PA1170-60E	Lawn area at southern extent	2020-06-01	139	D. Williams

15.0 Appendix B: Document Catalogue

Project	Description	Created By
PA1170	910 March Road, Field Notes Stage 2 Archaeological Assessment (One Note file exported as PDF)	D. Williams

16.0 Appendix C: Map Catalogue

Map Number	Description	Created By
1	Location	B. Mortimer
2	Development Map	B. Mortimer
3	Archaeological Potential	B. Mortimer
4	Historic	B. Mortimer
5	Conditions and Photo Key	B. Mortimer
6	Soils and Physiography	B. Mortimer
7	Surficial Geology	B. Mortimer
8	Aerial Imagery	B. Mortimer
9	Methodology	B. Mortimer
