

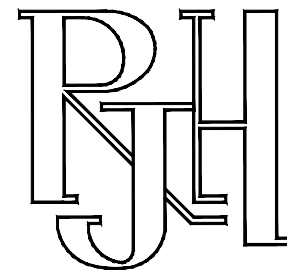
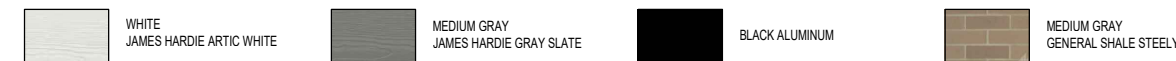
**ANDREW MCCREIGHT**  
**MANAGER (A), DEVELOPMENT REVIEW CENTRAL**  
**PLANNING, REAL ESTATE & ECONOMIC DEVELOPMENT**  
**DEPARTMENT, CITY OF OTTAWA**

**APPROVED**  
 By Andrew McCreight at 8:27 am, Aug 10, 2023



**KEY TO MATERIALS**

1	ROOF COLOUR: DRIFT WOOD	3a	BOARD & BATTEN SIDING COLOUR: MEDIUM GRAY (JH GRAY SLATE)	4a	TRIM COLOUR: BLACK ALUMINUM	6	BALCONY RAILING COLOUR: BLACK ALUMINUM
2a	ROOF FASCIA COLOUR: BLACK ALUMINUM	3b	VERTICAL SIDING COLOUR: MEDIUM GRAY (JH GRAY SLATE)	4b	TRIM COLOUR: MEDIUM GRAY (JH GRAY SLATE)	7	BALCONY STRUCTURE COLOUR: BLACK ALUMINUM
2b	ROOF SOFFIT COLOUR: BLACK ALUMINUM	3c	HORIZONTAL SIDING COLOUR: WHITE (JH ARTIC WHITE)	4c	TRIM COLOUR: WHITE (JH ARTIC WHITE)	8	ENTRY STEPS & PORCH COLOUR: NATURAL CEMENT PARGING
		3d	HORIZONTAL SIDING COLOUR: LIGHT 'HARVEST COLOUR'	5a	WINDOW & SLIDING DOOR FRAME COLOUR: BLACK ALUMINUM	9	FOUNDATION WALL COLOUR: NATURAL CEMENT PARGING
		3e	MASONRY - BRICK COLOUR: MEDIUM (GS STEELY)	5b	UNIT DOOR & FRAME COLOUR: BLACK ALUMINUM		



414 Churchill Ave. N. Ottawa,  
 ON, K1Z 5C6 • 613-853-2822  
 www.rjhill.ca • rosaline@rjhill.ca

Rosaline J. Hill Architect Inc.

BLOCK 2

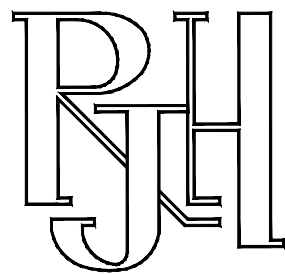
**TRAILS EDGE HOUSING**  
 6173 Renaud Rd, Ottawa, Ontario, K1W 0K9  
 MARCH 1, 2022 SCALE: 1/8" = 1'-0"  
**NORTH ELEVATION (FRONT)**

**ANDREW MCCREIGHT**  
 MANAGER (A), DEVELOPMENT REVIEW CENTRAL  
 PLANNING, REAL ESTATE & ECONOMIC DEVELOPMENT  
 DEPARTMENT, CITY OF OTTAWA

**APPROVED**  
 By Andrew McCreight at 8:27 am, Aug 10, 2023



KEY TO MATERIALS			
1	ROOF COLOUR: DRIFT WOOD	3a	BOARD & BATTEN SIDING COLOUR: MEDIUM GRAY (JH GRAY SLATE)
2a	ROOF FASCIA COLOUR: BLACK ALUMINUM	3b	VERTICAL SIDING COLOUR: MEDIUM GRAY (JH GRAY SLATE)
2b	ROOF SOFFIT COLOUR: BLACK ALUMINUM	3c	HORIZONTAL SIDING COLOUR: WHITE (JH ARTIC WHITE)
		3d	HORIZONTAL SIDING COLOUR: LIGHT 'HARVEST COLOUR'
		3e	MASONRY - BRICK COLOUR: MEDIUM (GS STEELY)
		4a	TRIM COLOUR: BLACK ALUMINUM
		4b	TRIM COLOUR: MEDIUM GRAY (JH GRAY SLATE)
		4c	TRIM COLOUR: WHITE (JH ARTIC WHITE)
		5a	WINDOW & SLIDING DOOR FRAME COLOUR: BLACK ALUMINUM
		5b	UNIT DOOR & FRAME COLOUR: BLACK ALUMINUM
		6	BALCONY RAILING COLOUR: BLACK ALUMINUM
		7	BALCONY STRUCTURE COLOUR: BLACK ALUMINUM
		8	ENTRY STEPS & PORCH COLOUR: NATURAL CEMENT PARGING
		9	FOUNDATION WALL COLOUR: NATURAL CEMENT PARGING



414 Churchill Ave. N. Ottawa,  
 ON, K1Z 5C6 • 613-853-2822  
 www.rjhill.ca • rosaline@rjhill.ca

Rosaline J. Hill Architect Inc.

BLOCK 2

**TRAILSEDGE HOUSING**  
 6173 Renaud Rd, Ottawa, Ontario, K1W 0K9  
 MARCH 1, 2022 SCALE: 1/8" = 1'-0"  
**SOUTH ELEVATION**

**ANDREW MCCREIGHT**  
 MANAGER (A), DEVELOPMENT REVIEW CENTRAL  
 PLANNING, REAL ESTATE & ECONOMIC DEVELOPMENT  
 DEPARTMENT, CITY OF OTTAWA

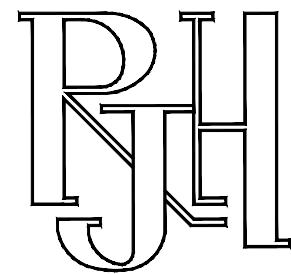
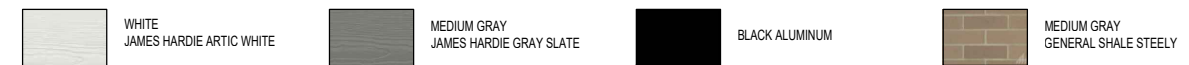
**APPROVED**

By Andrew McCreight at 8:27 am, Aug 10, 2023



**KEY TO MATERIALS**

1 ROOF COLOUR: DRIFT WOOD	3a BOARD & BATTEN SIDING COLOUR: MEDIUM GRAY (JH GRAY SLATE)	4a TRIM COLOUR: BLACK ALUMINUM	6 BALCONY RAILING COLOUR: BLACK ALUMINUM
2a ROOF FASCIA COLOUR: BLACK ALUMINUM	3b VERTICAL SIDING COLOUR: MEDIUM GRAY (JH GRAY SLATE)	4b TRIM COLOUR: MEDIUM GRAY (JH GRAY SLATE)	7 BALCONY STRUCTURE COLOUR: BLACK ALUMINUM
2b ROOF SOFFIT COLOUR: BLACK ALUMINUM	3c HORIZONTAL SIDING COLOUR: WHITE (JH ARTIC WHITE)	4c TRIM COLOUR: WHITE (JH ARTIC WHITE)	8 ENTRY STEPS & PORCH COLOUR: NATURAL CEMENT PARGING
	3d HORIZONTAL SIDING COLOUR: LIGHT 'HARVEST COLOUR'	5a WINDOW & SLIDING DOOR FRAME COLOUR: BLACK ALUMINUM	9 FOUNDATION WALL COLOUR: NATURAL CEMENT PARGING
	3e MASONRY - BRICK COLOUR: MEDIUM (GS STEELY)	5b UNIT DOOR & FRAME COLOUR: BLACK ALUMINUM	



414 Churchill Ave. N. Ottawa,  
 ON, K1Z 5C6 • 613-853-2822  
 www.rjhill.ca • rosaline@rjhill.ca

Rosaline J. Hill Architect Inc.

**TRAILSEDGE HOUSING**

6173 Renaud Rd, Ottawa, Ontario, K1W 0K9

MARCH 1, 2022 SCALE: 1/8" = 1'-0"

BLOCK 2

WEST ELEVATION

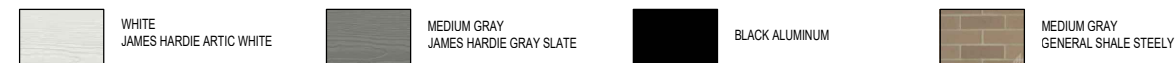
D07-12-20-0094

**ANDREW MCCREIGHT**  
 MANAGER (A), DEVELOPMENT REVIEW CENTRAL  
 PLANNING, REAL ESTATE & ECONOMIC DEVELOPMENT  
 DEPARTMENT, CITY OF OTTAWA

**APPROVED**  
 By Andrew McCreight at 8:27 am, Aug 10, 2023



KEY TO MATERIALS			
1	ROOF COLOUR: DRIFT WOOD	3a	BOARD & BATTEN SIDING COLOUR: MEDIUM GRAY (JH GRAY SLATE)
2a	ROOF FASCIA COLOUR: BLACK ALUMINUM	3b	VERTICAL SIDING COLOUR: MEDIUM GRAY (JH GRAY SLATE)
2b	ROOF SOFFIT COLOUR: BLACK ALUMINUM	3c	HORIZONTAL SIDING COLOUR: WHITE (JH ARTIC WHITE)
		3d	HORIZONTAL SIDING COLOUR: LIGHT 'HARVEST COLOUR'
		3e	MASONRY - BRICK COLOUR: MEDIUM (GS STEELY)
		4a	TRIM COLOUR: BLACK ALUMINUM
		4b	TRIM COLOUR: MEDIUM GRAY (JH GRAY SLATE)
		4c	TRIM COLOUR: WHITE (JH ARTIC WHITE)
		5a	WINDOW & SLIDING DOOR FRAME COLOUR: BLACK ALUMINUM
		5b	UNIT DOOR & FRAME COLOUR: BLACK ALUMINUM
		6	BALCONY RAILING COLOUR: BLACK ALUMINUM
		7	BALCONY STRUCTURE COLOUR: BLACK ALUMINUM
		8	ENTRY STEPS & PORCH COLOUR: NATURAL CEMENT PARGING
		9	FOUNDATION WALL COLOUR: NATURAL CEMENT PARGING



**RJH**  
 414 Churchill Ave. N. Ottawa,  
 ON, K1Z 5C6 • 613-853-2822  
 www.rjhill.ca • rosaline@rjhill.ca

Rosaline J. Hill Architect Inc.

BLOCK 2

**TRAILS EDGE HOUSING**  
 6173 Renaud Rd, Ottawa, Ontario, K1W 0K9  
 MARCH 1, 2022 SCALE: 1/8" = 1'-0"

**EAST ELEVATION**