

TOPOGRAPHIC PLAN OF SURVEY OF  
**PART OF LOT 5  
 CONCESSION 3 (OTTAWA FRONT)**  
 GEOGRAPHIC TOWNSHIP OF GLOUCESTER  
 CITY OF OTTAWA  
 FARLEY, SMITH & DENIS SURVEYING LTD. 2017

Scale 1: 200

**Metric Note**  
 Distances and coordinates on this plan are in metres and can be converted to feet by dividing by 0.3048.

**Distance Note**  
 Distances shown on this plan are ground distances and can be converted to grid distances by multiplying by the combined scale factor of 0.99996.

**Bearing Note**  
 Bearings are grid, and are referred to the northerly limit of Renaud Road having a bearing of N 58° 24' 40" E as shown on Plan 4R-29801. Bearings are referred to the Central Meridian of MTM Zone 9 (76°30' West Longitude) Nad-83 (Original).

For bearing comparisons, a rotation of 0°01'25" clockwise was applied to bearings on (P2) and (P3).

**Elevation Notes**  
 1. Elevations shown are geodetic and are referred to Geodetic Datum CGVD-1928 -1978.  
 2. It is the responsibility of the user of this information to verify that the job benchmark has not been altered or disturbed and that its relative elevation and description agrees with the information shown on this drawing.

**Utility Notes**  
 1. This drawing cannot be accepted as acknowledging all of the utilities and it will be the responsibility of the user to contact the respective utility authorities for confirmation.  
 2. Only visible surface utilities were located.  
 3. Underground utility data derived from City of Ottawa utility sheet reference: J-30-16, J-30-21, J-30-22 and drawing 16799.  
 4. Sanitary and storm sewer grades and inverts were compiled from field measurement and city of Ottawa utility sheets.  
 5. A field location of underground plant by the pertinent utility authority is mandatory before any work involving breaking ground, probing, excavating etc.

**Notes & Legend**

Symbol	Denotes
SSB	Survey Monument Planted
SSIB	Standard Iron Bar
SIB	Short Standard Iron Bar
IB	Iron Bar
(Wh)	Witness
Meas	Measured
Fdn	Foundation
U/Eave	Underside of Eave
(P1)	Plan 4R-29801
(P2)	Plan by (SC) dated May 31, 2012 (Ref. 1-4M-1450)
(P3)	Plan by (SS) dated August 7, 2012 (Ref. 1-4M-1450)
(P4)	Registered Plan 4M-1450
OH-ST	Maintenance Hole (Storm)
OH-S	Maintenance Hole (Sanitary)
VC	Valve Chamber (Watermain)
WV	Water Valve
Inv.	Invert
T/G	Top of Grate
ST	Underground Storm Sewer
S	Underground Sanitary Sewer
UW	Underground Water
OW	Overhead Wires
UG	Underground Gas
UH	Underground Hydro
B	Underground Bell
UP	Utility Pole
AN	Anchor
LP	Lamp Post
DI	Ditch Inlet
CB	Catch Basin
CBM	Catch Basin Inlet
SP	Water Stand Post
AC	Gate
AC	Air Conditioner
GM	Gas Meter
PH	Fire Hydrant
Ø	Diameter
CLF	Chain Link Fence
BF	Board Fence
CH	Cedar Hedge
C/L	Centreline
SRW	Stone Retaining Wall
+ 65.00	Location of Elevations
+ 65.00	Top of Concrete Curb Elevation
---	Property Line
○	Deciduous Tree
★	Coniferous Tree

**Revision**  
 Plan Revised on February 20, 2020 to amend overhead wires.

**Revision**  
 Plan Revised on October 28, 2019 to amend tree diameters.

**Surveyor's Certificate**  
 I certify that:  
 1. This survey and plan are made in and accordance with the Surveys Act, the Surveyors Act and the Regulations made under them.  
 2. The survey was completed on the 5th day of July, 2017.

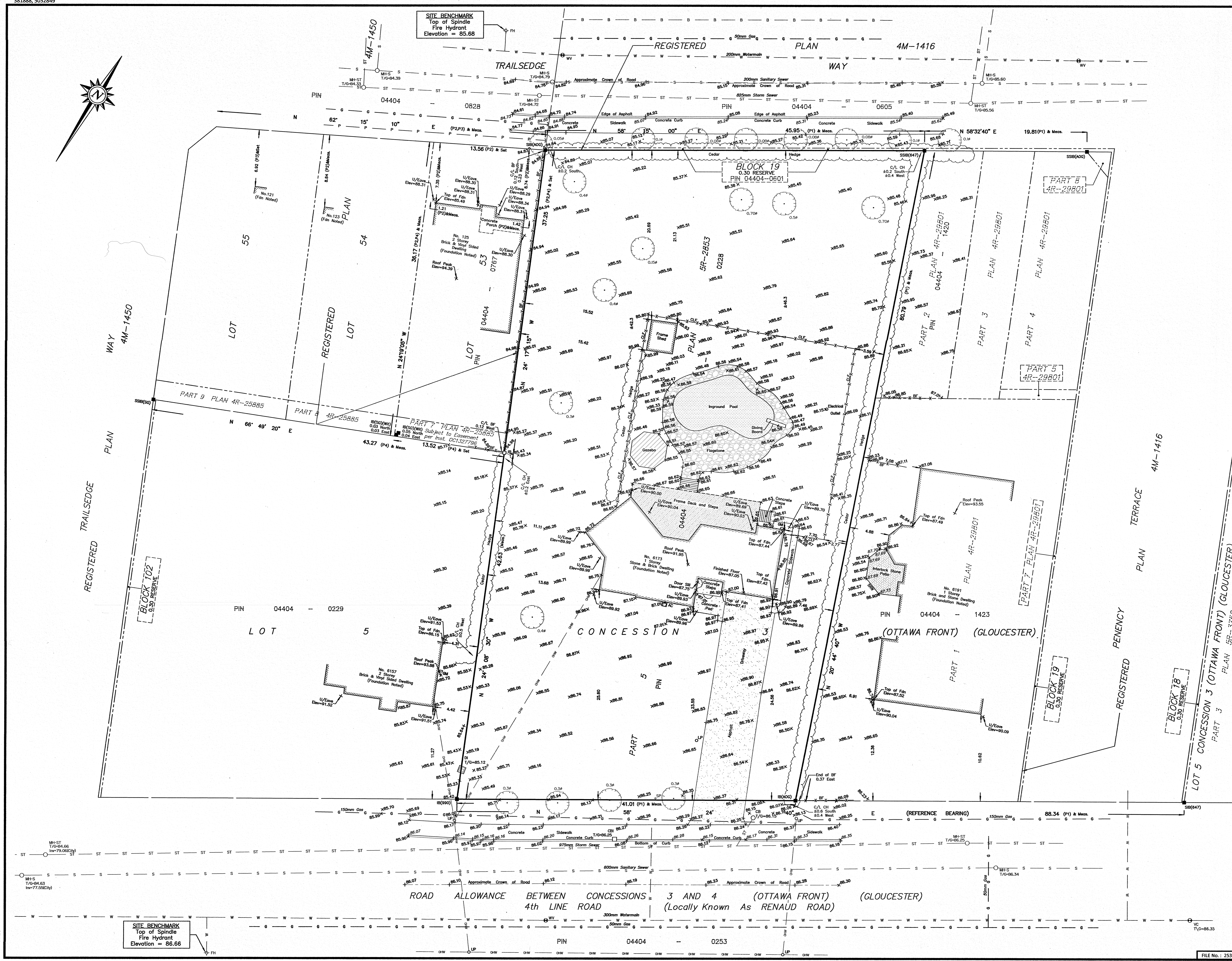
July 31, 2017  
 Date  
 Daniel Robinson  
 Ontario Land Surveyor

**WARNING** NO PERSON MAY COPY, REPRODUCE, DISTRIBUTE OR ALTER THIS PLAN IN WHOLE OR IN PART WITHOUT THE WRITTEN PERMISSION OF FARLEY, SMITH & DENIS SURVEYING LTD.  
 © FARLEY, SMITH & DENIS SURVEYING LTD. 2017.

**FARLEY, SMITH & DENIS SURVEYING LTD.**

ONTARIO LAND SURVEYORS  
 CANADA LAND SURVEYORS  
 190 COLONNADE ROAD, OTTAWA, ONTARIO K2E 7J5  
 TEL. (613) 727-8226 FAX. (613) 727-1826

File No.: 253-17



**SITE BENCHMARK**  
 Top of Spindle  
 Fire Hydrant  
 Elevation = 86.66

File No.: 253-17