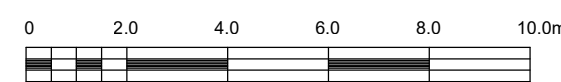
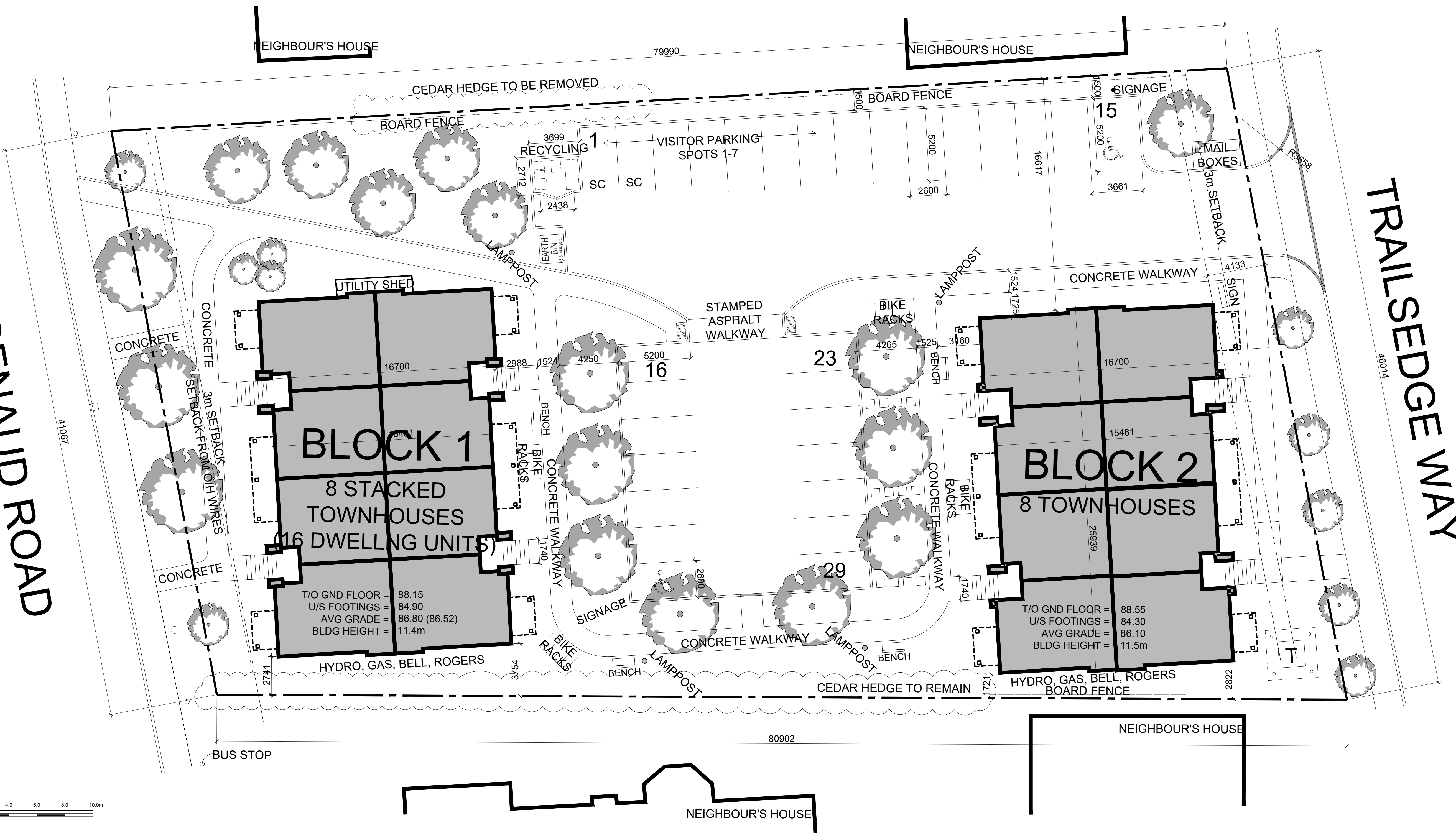
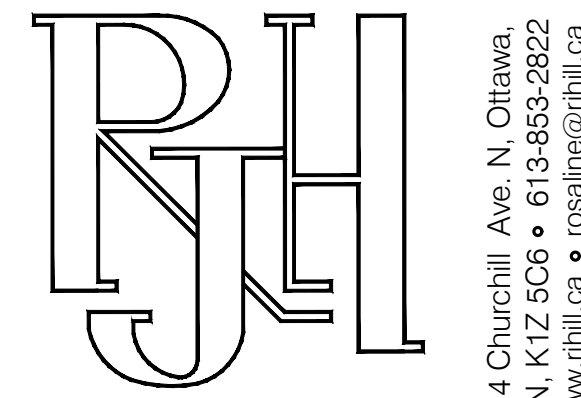
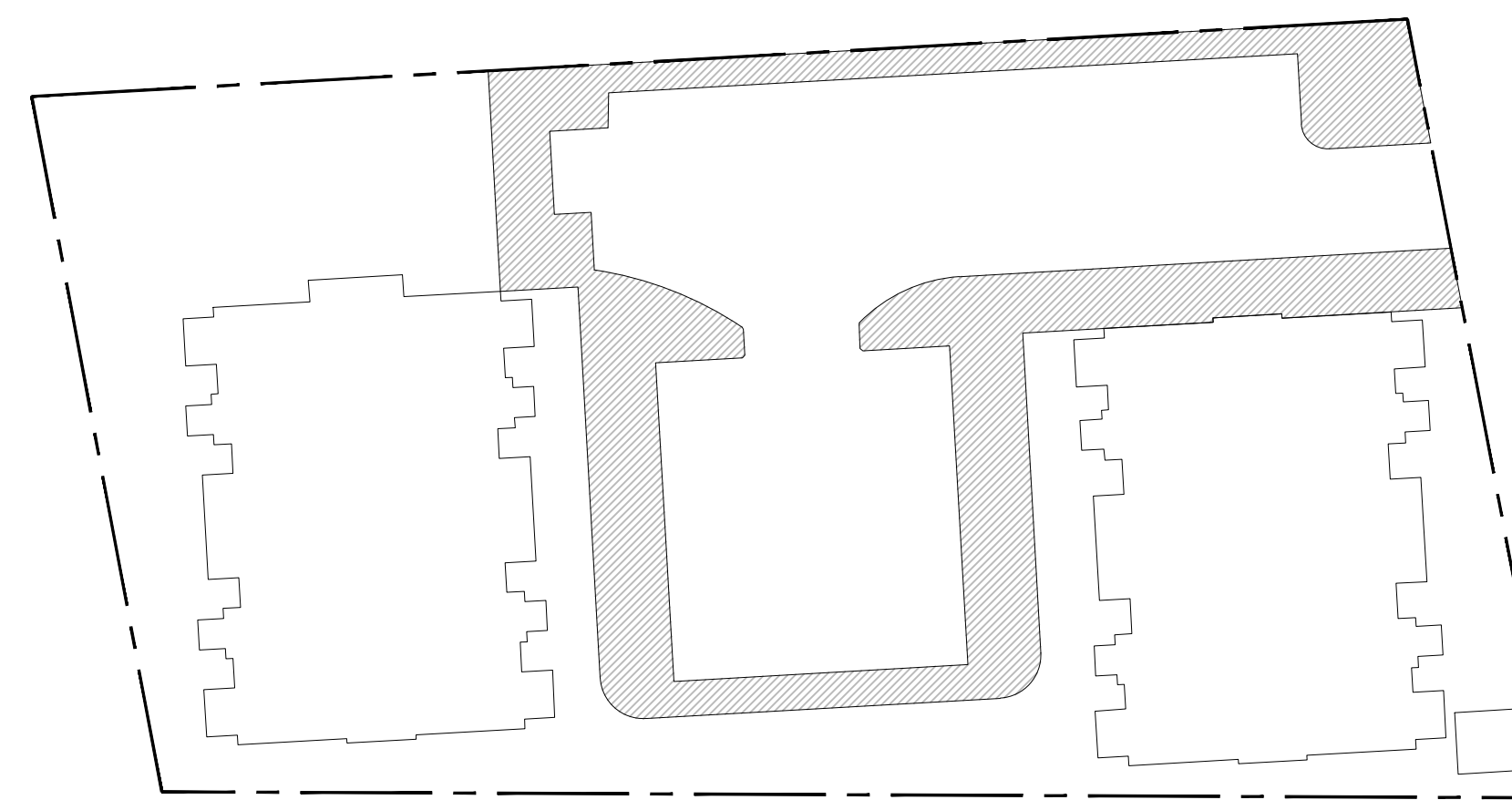
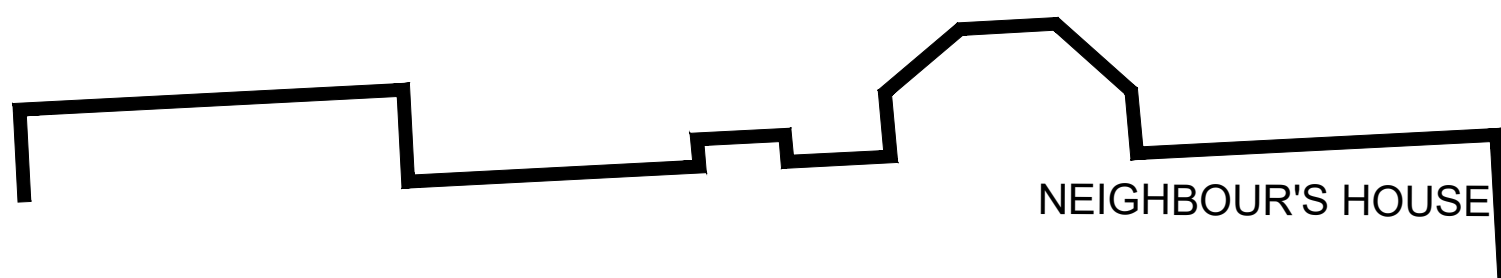


RENAUD ROAD

TRAILSEDGE WAY

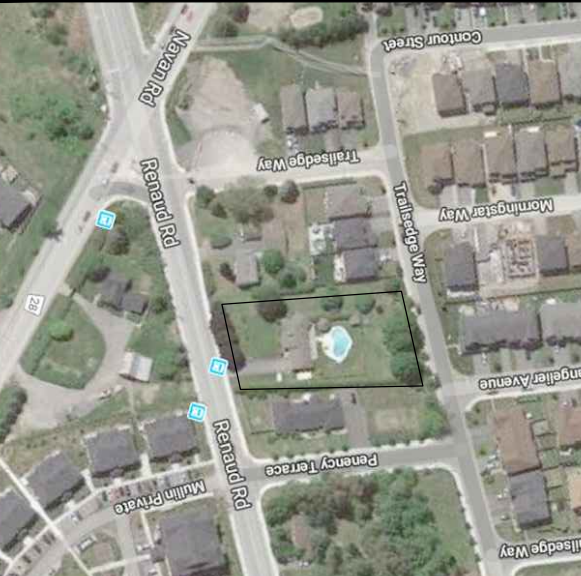


RECOMMENDED R4M ZONING	
CRITERIA	PERFORMANCE STANDARD
MIN LOT AREA	1400 SQUARE METRES
MIN LOT WIDTH	NOT APPLICABLE
MIN FRONT YARD SETBACK	3M
MIN INTERIOR SIDE YARD SETBACK	1.5 METRES AND 3 METRES
MINIMUM REAR YARD SETBACK	3M
MINIMUM LANDSCAPED AREA	30%
MAXIMUM LOT COVERAGE	NOT APPLICABLE
MAX HEIGHT	4.5



Rosaline J. Hill Architect Inc.

No.	Y / M / D	REVISION
7.	2021-01-05	ISSUED FOR SITE PLAN APPLICATION (TWS) DELETE AT FRONT ENTRY
6.	2020-12-22	ISSUED FOR SITE PLAN APPLICATION
5.	2020-09-21	ISSUED FOR SITE PLAN APPLICATION
4.	2020-02-21	ISSUED FOR COORDINATION
3.	2020-01-17	ISSUED FOR COORDINATION
2.	2019-12-19	ISSUED FOR COORDINATION
1.	2019-12-13	ISSUED FOR COORDINATION



CLIENT:
 TEAK DEVELOPMENTS
 105-323 Coventry Road,
 Ottawa Ontario
 K1K 3X6

SURVEYOR:
 Farley, Smith and Denis Surveying Ltd.
 190 Colonade Road,
 Ottawa, Ontario
 K2E 7J5
 613-727-8226

SITE SERVICING ENGINEER:
 Kollaard Associates Inc.
 210 Prescott Street,
 Kempville, ON
 K0G 1J0
 613-860-0923

LANDSCAPE ARCHITECT:
 James B. Lennox & Associates Inc.
 3332 Carling Avenue,
 Ottawa, Ontario
 K2H 5A8
 613-722-5168

PLANNING:
 Alison Stirling
 The Stirling Group
 1148 Julia Court
 Ottawa, ON
 K0A 1T0
 613-299-5654

It is the responsibility of the appropriate contractor to check & verify all dimensions on site and report all errors &/or omissions to the architect. All contractors must comply with all pertinent codes & by-laws, & use proprietary products as directed by the manufacturer. Do not scale drawings. Copyright reserved.

Trailsedge Stacked Towns
 6173 Renaud Road, Ottawa, K1W 0K9

SITE PLAN

Drawn By: RJH/RV	Date: Oct. 2019	A1.0
Project No: 1908	Scale: 1:150	

D07-12-20-0094