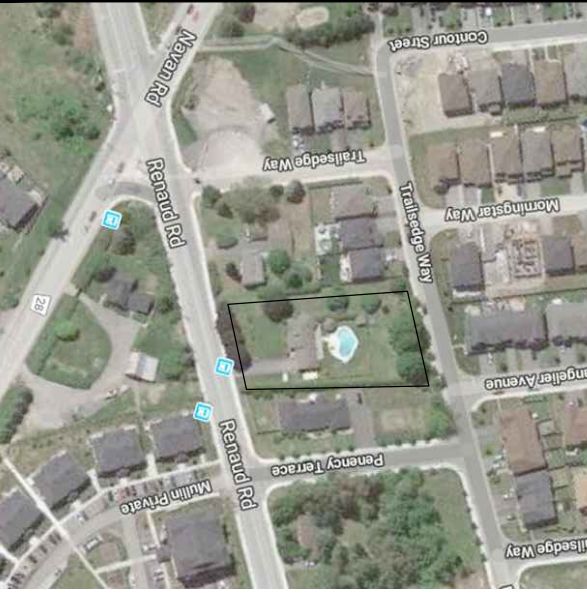


9.	2022-03-16	ISSUED FOR COORDINATION
8.	2022-03-04	ISSUED FOR COORDINATION
7.	2021-01-05	ISSUED FOR SITE PLAN APPLICATION TWSI DELETE AT FRONT ENTRY
6.	2020-12-22	ISSUED FOR SITE PLAN APPLICATION
5.	2020-09-21	ISSUED FOR SITE PLAN APPLICATION
4.	2020-02-21	ISSUED FOR COORDINATION
3.	2020-01-17	ISSUED FOR COORDINATION
2.	2019-12-19	ISSUED FOR COORDINATION
1.	2019-12-13	ISSUED FOR COORDINATION
No.		Y / M / D REVISION



CLIENT:
TEAK DEVELOPMENTS
105-323 Coventry Road,
Ottawa, ON K1K 3X6

SURVEYOR:
Farley, Smith and Denis Surveying Ltd.
190 Colonnade Road,
Ottawa, ON K2E 7J5
613-727-8226

SITE SERVICING ENGINEER:
Kollaard Associates Inc.
210 Prescott Street,
Kemptville, ON K0G 1J0
613-860-0923

LANDSCAPE ARCHITECT:
James B. Lennox & Associates Inc.
3332 Carling Avenue,
Ottawa, ON K2H 5A8
613-722-5168

PLANNING:
Alison Stirling
The Stirling Group
1148 Julia Court
Ottawa, ON K0A 1T0
613-299-5654

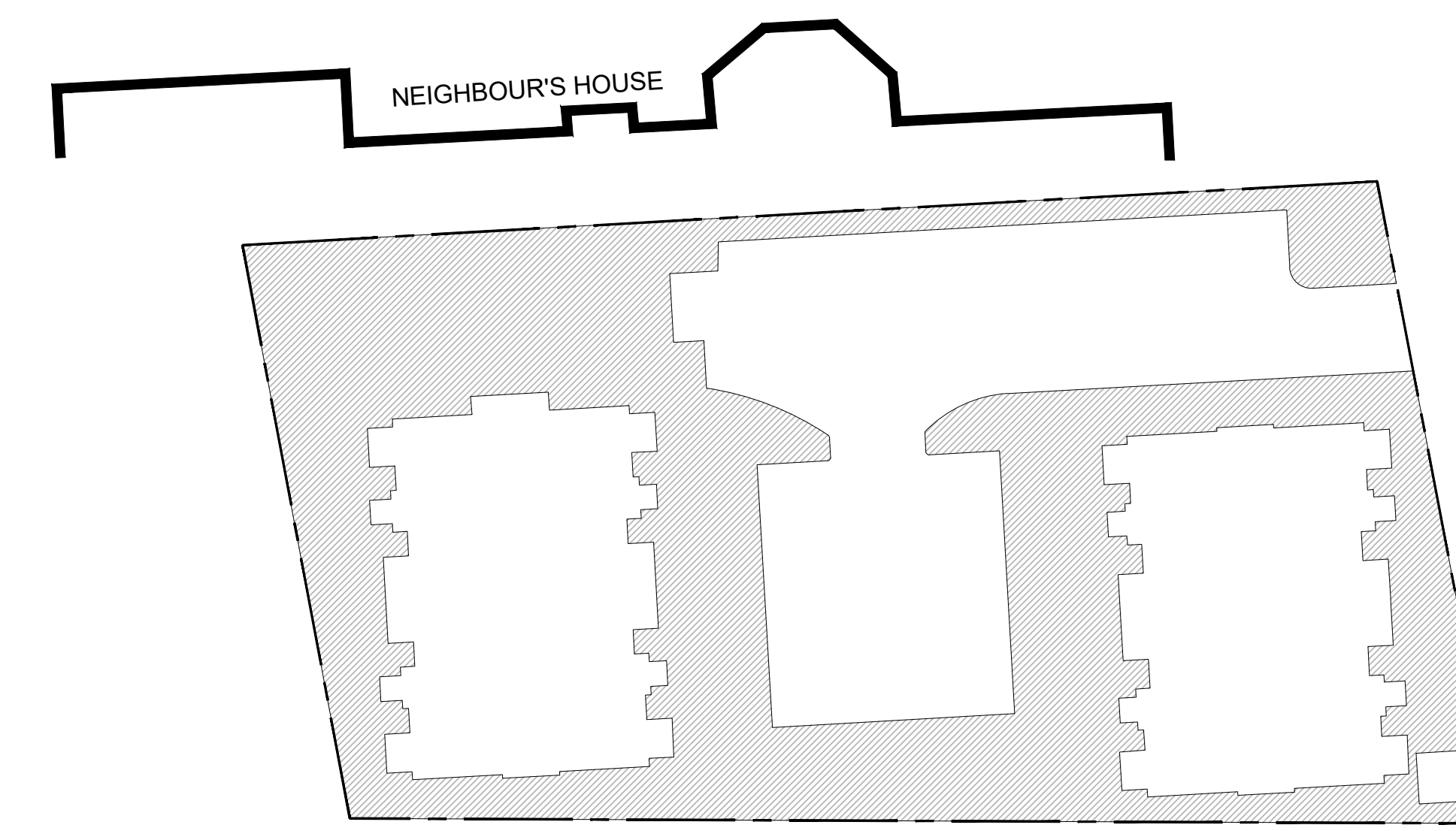
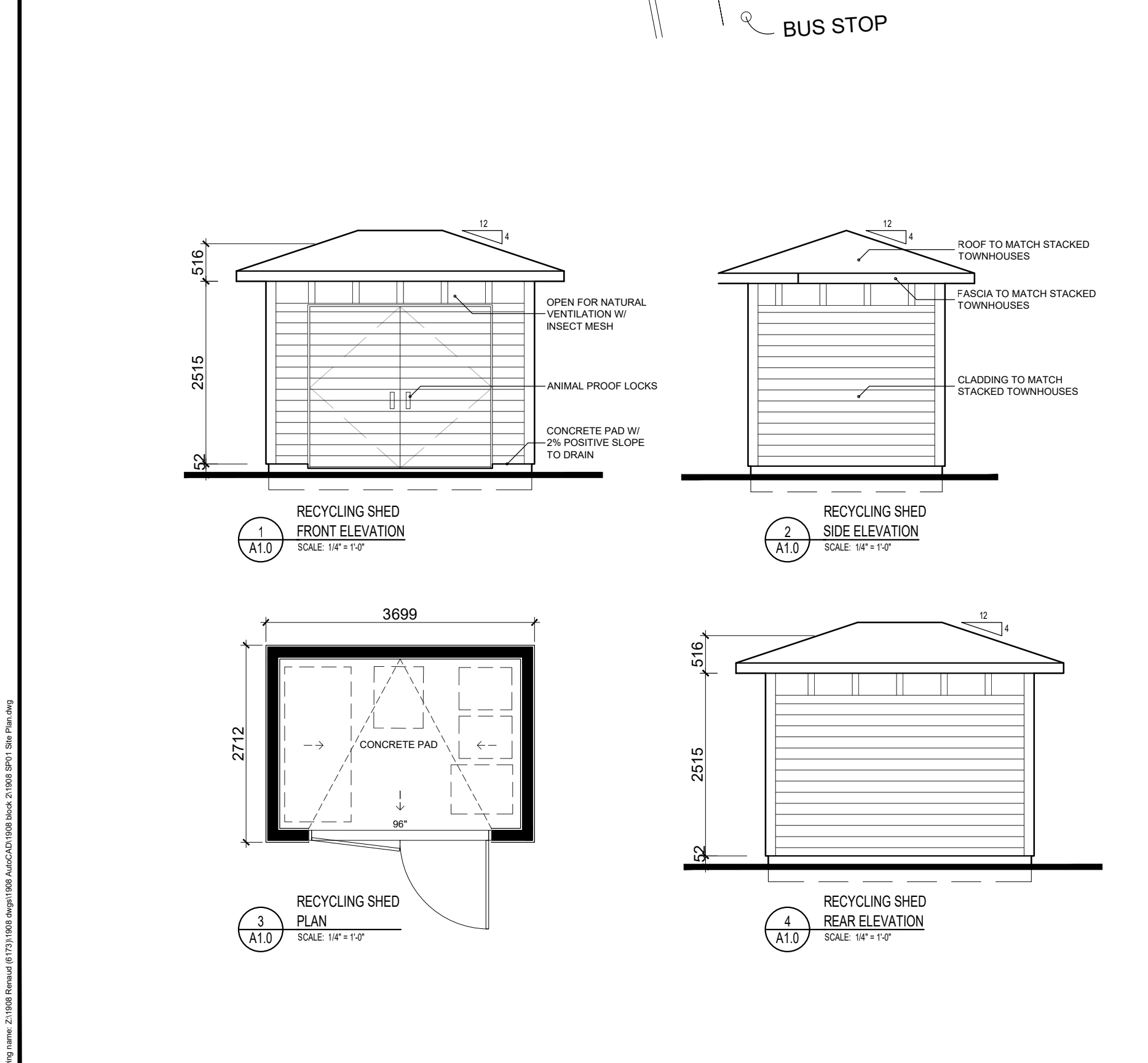
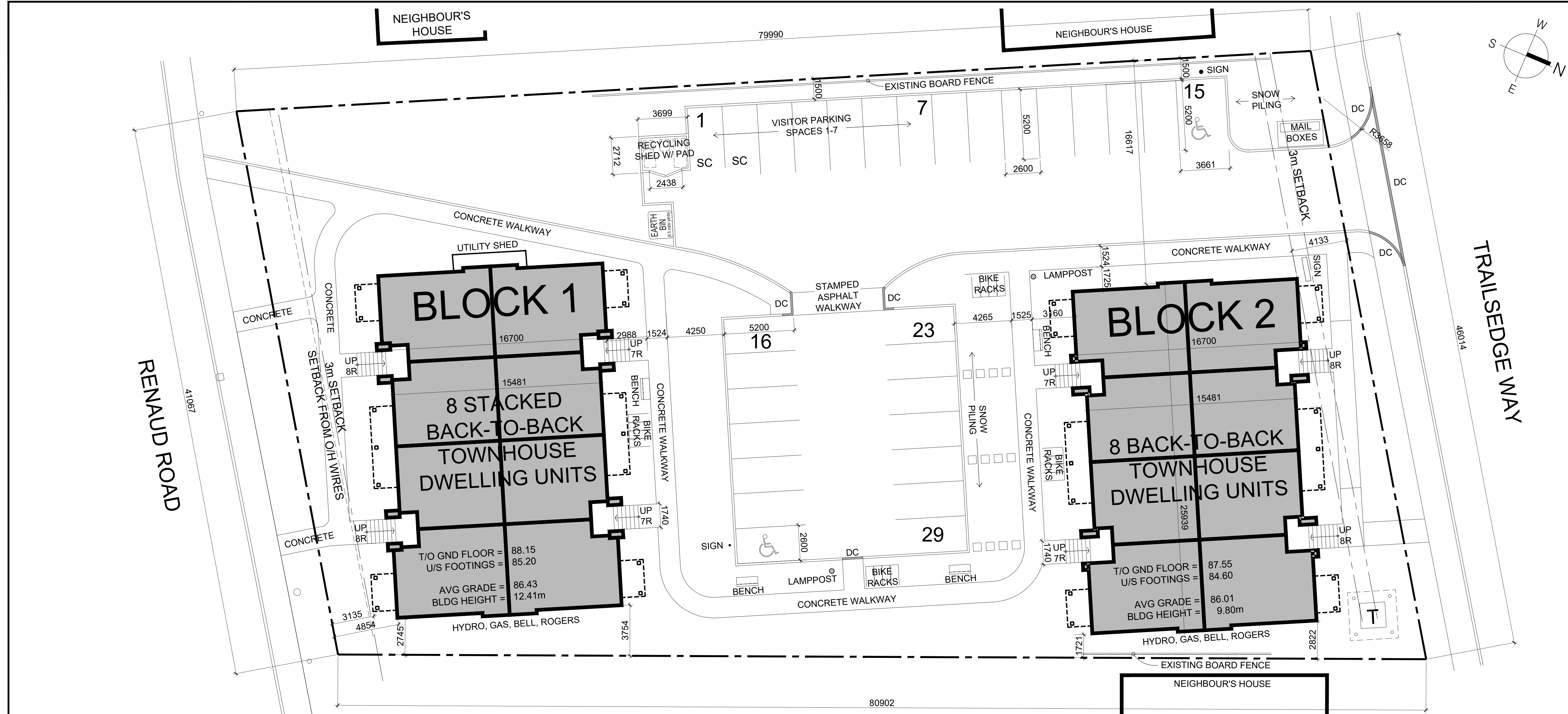
It is the responsibility of the appropriate contractor to check & verify all dimensions on site and report all errors &/or omissions to the architect. All contractors must comply with all pertinent codes & by-laws, & use proprietary products as directed by the manufacturer. Do not scale drawings. Copyright reserved.

Trailledge Stacked Towns
6173 Renaud Road, Ottawa, K1W 0K9

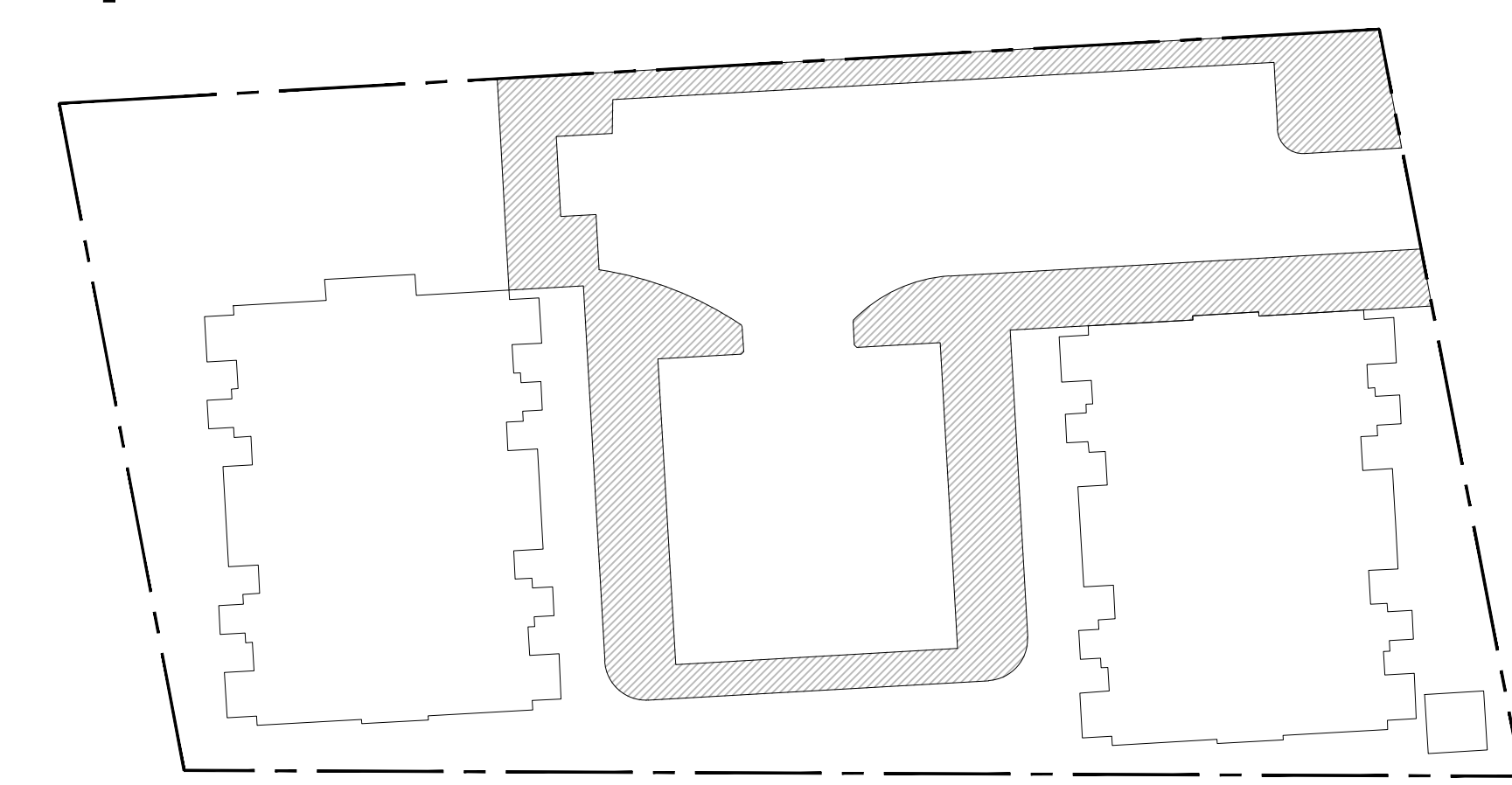
SITE PLAN

Drawn By: RJH/RV Date: Oct. 2019
Project No: 1908 Scale: 1:150

A1.0



AVERAGE GRADE (WEIGHTED)	
BLOCK 1	BLOCK 2
NORTH = 86.78	NORTH = 85.96
SOUTH = 85.98	SOUTH = 86.30
WEST = 86.51	WEST = 85.90
EAST = 86.48	EAST = 85.90
345.75 / 4 = 86.43	344.06 / 4 = 86.01



RECOMMENDED R4M ZONING	
CRITERIA	PERFORMANCE STANDARD
MIN LOT AREA	1400 SQUARE METRES
MIN LOT WIDTH	NOT APPLICABLE
MIN FRONT YARD SETBACK	3M
MIN INTERIOR SIDE YARD SETBACK	1.5 METRES AND 3 METRES
MINIMUM REAR YARD SETBACK	3M
MINIMUM LANDSCAPED AREA	30%
MAXIMUM LOT COVERAGE	NOT APPLICABLE
MAX HEIGHT	12.5m