

- GENERAL NOTES:**
- All dimensions are in metres; all elevations are in metres and are geodetic. TBM = top of spindle of existing fire hydrant on Trailside Way, Elevation = 85.68. Geodetic datum reference: COG-1928/1978.
 - This is not a legal survey. Boundary and topographic information were derived from FARLEY, SMITH & DENIS SURVEYING LTD File No. 253-17.
 - Contractor is responsible for location and protection of utilities. All dimensions to be verified on site by contractor prior to construction.
 - Any changes made to this plan must be verified and approved by Kollaard Associates Inc.
 - Client is responsible for acquiring all necessary permits. This drawing is not for construction until a building permit has been granted.
 - The proposed grades have been set and verified for site grading control only. The grade rise at the building location should be verified with regard to subsurface conditions by qualified geotechnical personnel after completion of the excavation.
 - The underside of footing elevation has been set based on the information available and may not have accounted for actual ground water conditions at the exact house location and should be verified by qualified geotechnical personnel upon completion of the excavation.
 - A geotechnical engineer should be retained to provide recommendations with respect to the sub-grade conditions prior to footing installation.
 - The owner agrees to prepare and implement an erosion and sediment control plan to the satisfaction of the City of Ottawa, appropriate to the site conditions, prior to undertaking any site alterations (filling, grading, removal of vegetation, etc.) and during all phases of site preparation and construction in accordance with the current Best Management Practices for Erosion and Sediment Control such as, and not limited to installing filter cloths across manholes/catchbasin lids to prevent sediments from entering structures and install and maintain a light duty air fence barrier as required.
 - All materials and construction to be in accordance with City of Ottawa standards and Ontario Provincial Standards and Specifications; sewer and watermain material types; disinfection, provide minimum 2.4 metres of cover for water services, cathodic protection. City of Ottawa insulation specifications for watermain, pipe bedding, reinstatement of displaced areas and leakage testing.
 - Reference to Kollaard File No. 190867 for Servicing and Stormwater Management Design and Geotechnical Reports.

| No. | REVISION | DATE | BY |
|-----|---|--------------|------|
| 7 | REVISIONS PER 5th REVIEW COMMENTS | 2023 FEB 06 | SD |
| 6 | REVISIONS PER 4th REVIEW COMMENTS | NOV. 15/2022 | ML |
| 5 | REVISIONS PER 3rd REVIEW COMMENTS | AUG. 15/2022 | ML |
| 4 | REVISIONS PER NEW SITE PLAN AND REVIEW COMMENTS | APR. 13/2022 | ML |
| 3 | ISSUED FOR SPC RE-SUBMISSION | APR. 22/2021 | ML |
| 2 | REVISIONS PER SITE PLAN AND 1ST REVIEW COMMENTS | MAR. 29/2020 | ML |
| 1 | ISSUED FOR SPC APPLICATION | JUNE 30/2020 | ML |
| # | REVISION ITEM / DESCRIPTION | REV. DATE | INT. |

Kollaard Associates
Engineers
(613) 860-0923
info@kollaard.ca

P.O. BOX 189, 210 PRESCOTT ST.
KEMPTVILLE, ONTARIO
K0G 1J0 FAX (613) 258-0475
http://www.kollaard.ca

CLIENT:
TEAK DEVELOPMENTS
31 WOODVIEW CRESCENT
OTTAWA, ON K1B 3B1

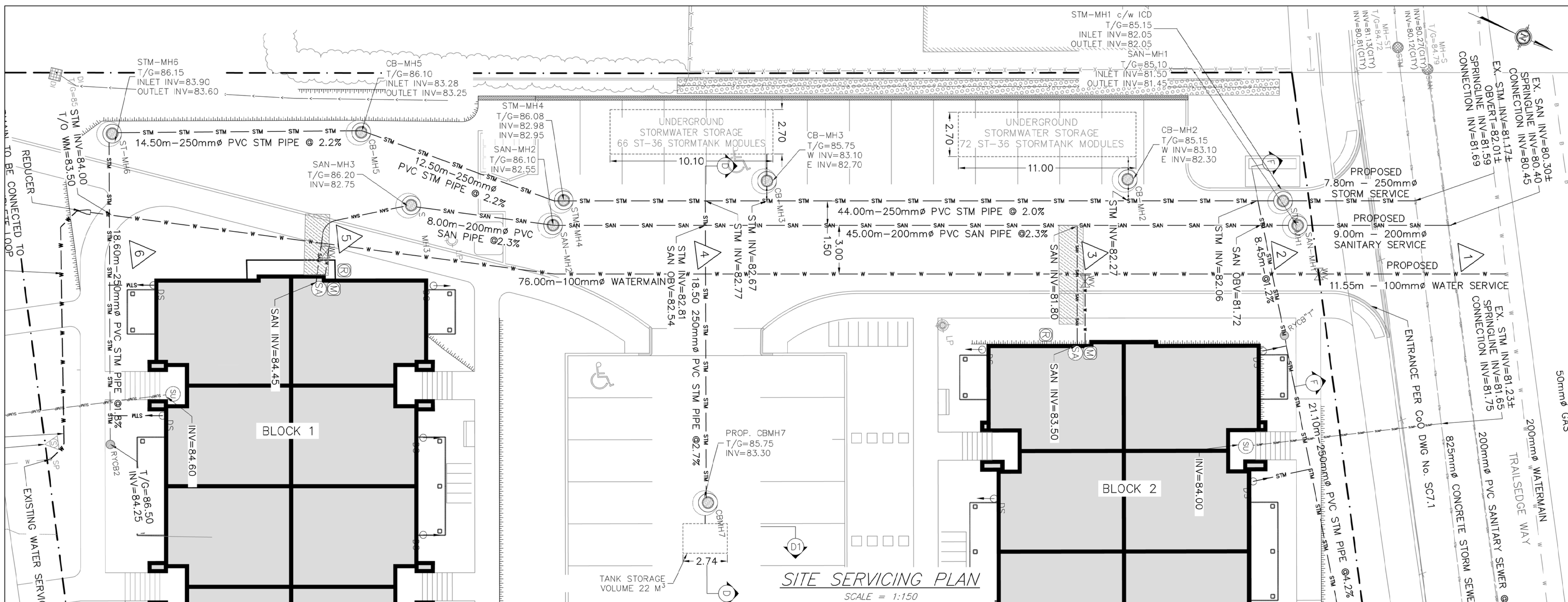
PROJECT:
PROPOSED RESIDENTIAL DEVELOPMENT

LOCATION:
6173 RENAUD ROAD
CITY OF OTTAWA, ON
K1W 0K9

| | |
|------------------------|---------------------------------|
| DESIGNED BY: SD | CHECKED BY: SD |
| DRAWN BY: ML | APPROVED BY: SD |
| DATE: NOV. 11, 2019 | KOLLAARD FILE NUMBER: 190867 |

DRAWING NUMBER: 190867-DET
DRAWING NAME: DETAILS

#18196



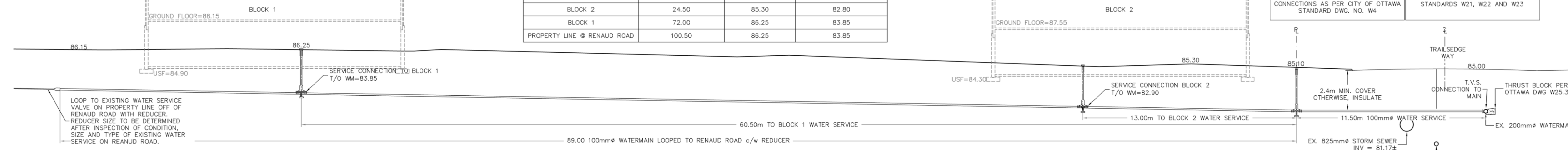
WATER CROSSING TABLE

| NO. | LOCATION | DEPTH (m) | PIPE TYPE |
|-----|-----------------------|--------------------|------------------|
| 1 | BOTTOM OF W/M = 82.45 | STM OBV = 82.05± | SAN OBV = 80.55± |
| 2 | BOTTOM OF W/M = 82.70 | STM OBV = 82.44 | |
| 3 | SAN INV = 83.40 | TOP OF W/M = 82.90 | |
| 4 | BOTTOM OF W/M = 83.40 | STM OBV = 83.14 | SAN INV = 84.40 |
| 5 | SAN INV = 84.40 | TOP OF W/M = 83.85 | STM INV = 84.00 |
| 6 | TOP OF W/M = 83.50 | | |

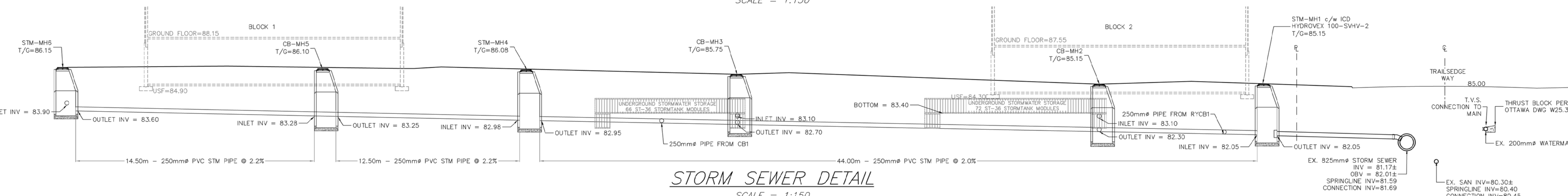
- NOTES:**
- REFER TO CITY OF OTTAWA STANDARD DWG. NO. W25 FOR INSTANCES WHERE WATERMAIN CROSSING IS BELOW SEWER.
 - PROVIDE INSULATION WHERE SEPARATION DISTANCES ARE LESS THAN 1m.

WATER TABLE [6173 RENAUD ROAD - SERVICE CONNECTION ON TRAILSIDE WAY]

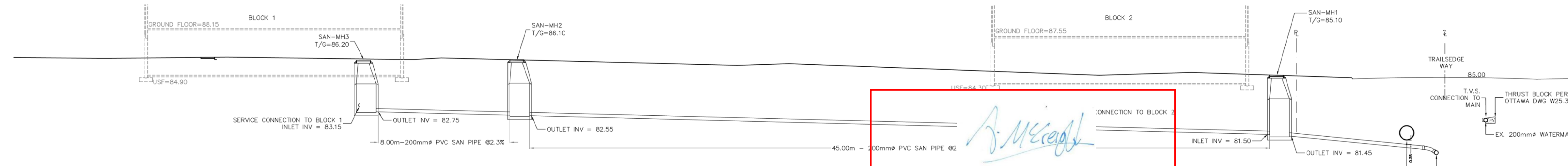
| LOCATION | DISTANCE (m) | GRADE ELEV. (m) | TOP OF WATER SERVICE ELEV. (m) |
|-----------------------------|--------------|-----------------|--------------------------------|
| CONNECTION @ TRAILSIDE WAY | 0.00 | 85.00 | 82.60 |
| PROPERTY LINE | 11.50 | 85.10 | 82.70 |
| BLOCK 2 | 24.50 | 85.30 | 82.80 |
| BLOCK 1 | 72.00 | 86.25 | 83.85 |
| PROPERTY LINE @ RENAUD ROAD | 100.50 | 86.25 | 83.85 |



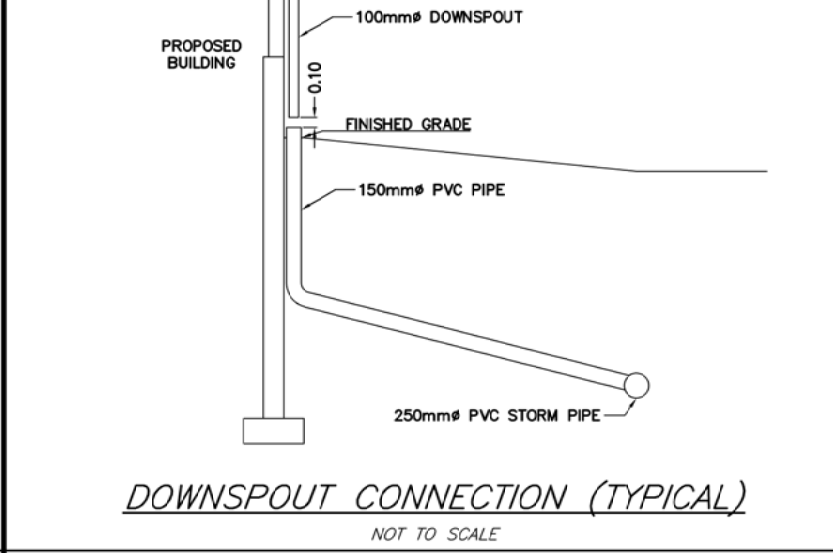
WATERMAIN DETAIL
SCALE = 1:150



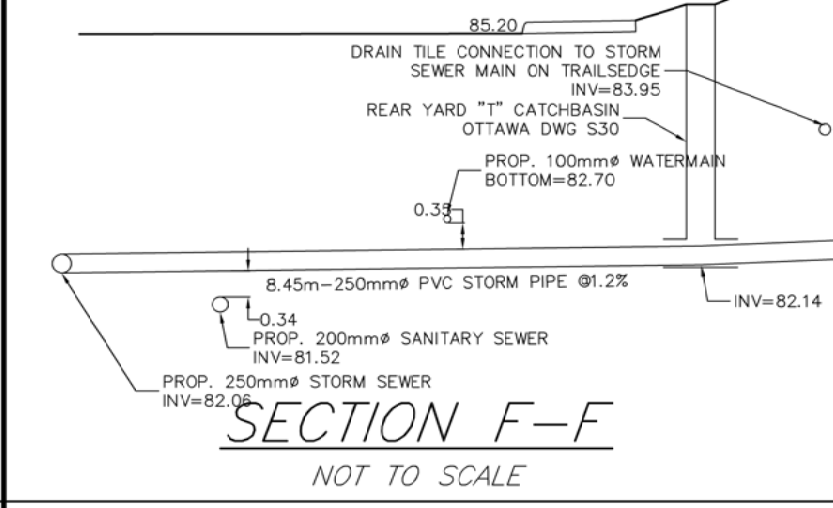
STORM SEWER DETAIL
SCALE = 1:150



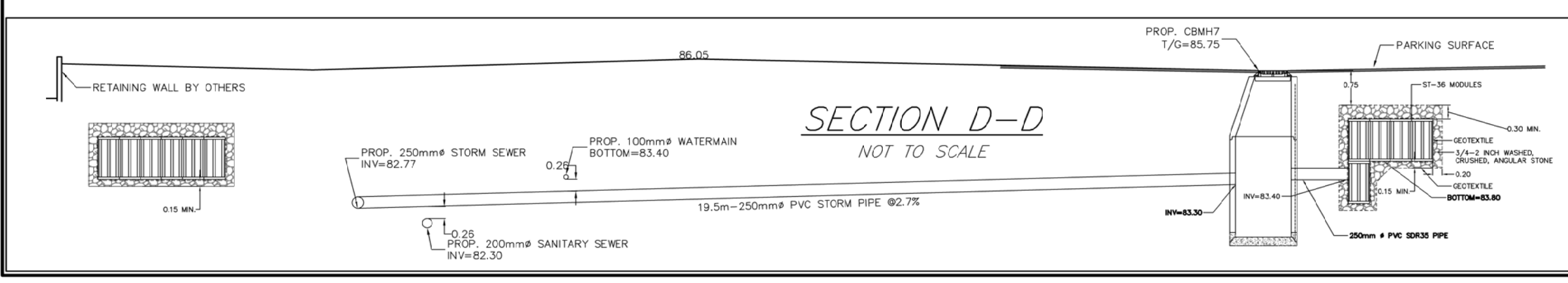
SANITARY SEWER DETAIL
SCALE = 1:150



DOWNSPOUT CONNECTION (TYPICAL)
NOT TO SCALE



SECTION F-F
NOT TO SCALE



SECTION D-D
NOT TO SCALE

ANDREW MCCREIGHT
MANAGER (A), DEVELOPMENT REVIEW CENTRAL
PLANNING, REAL ESTATE & ECONOMIC DEVELOPMENT
DEPARTMENT, CITY OF OTTAWA

APPROVED
By Andrew McCreight at 8:29 am, Aug 10, 2023

D07-12-20-0094