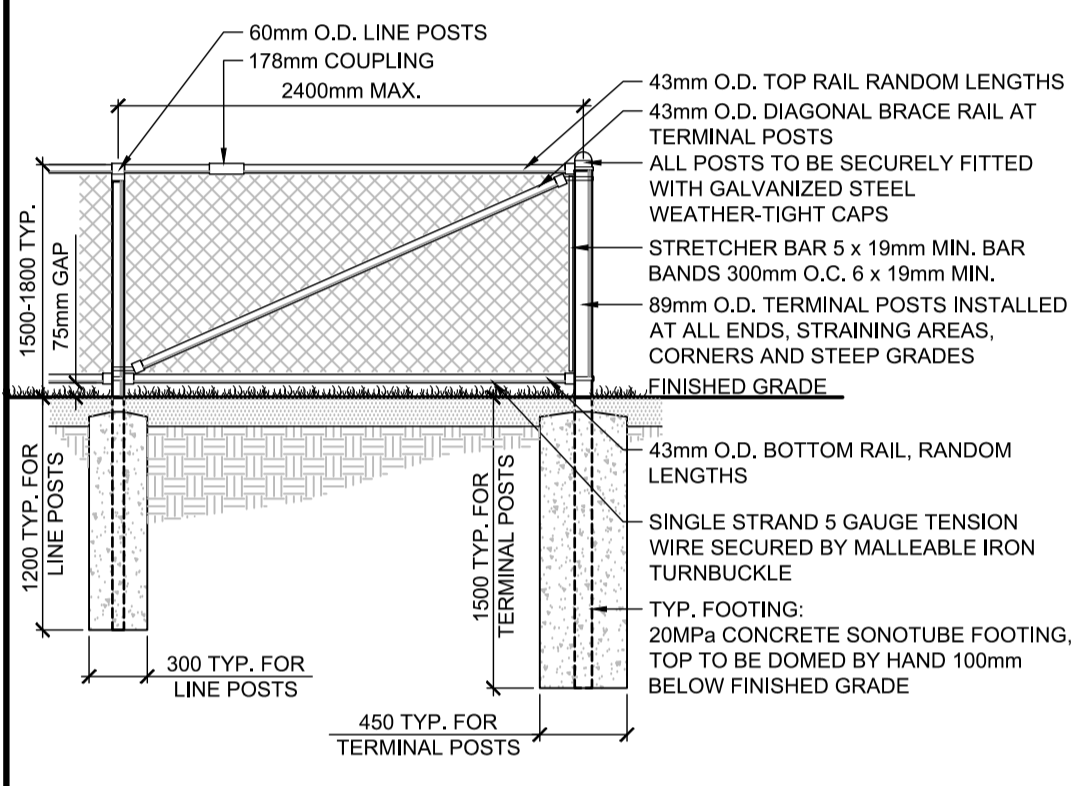
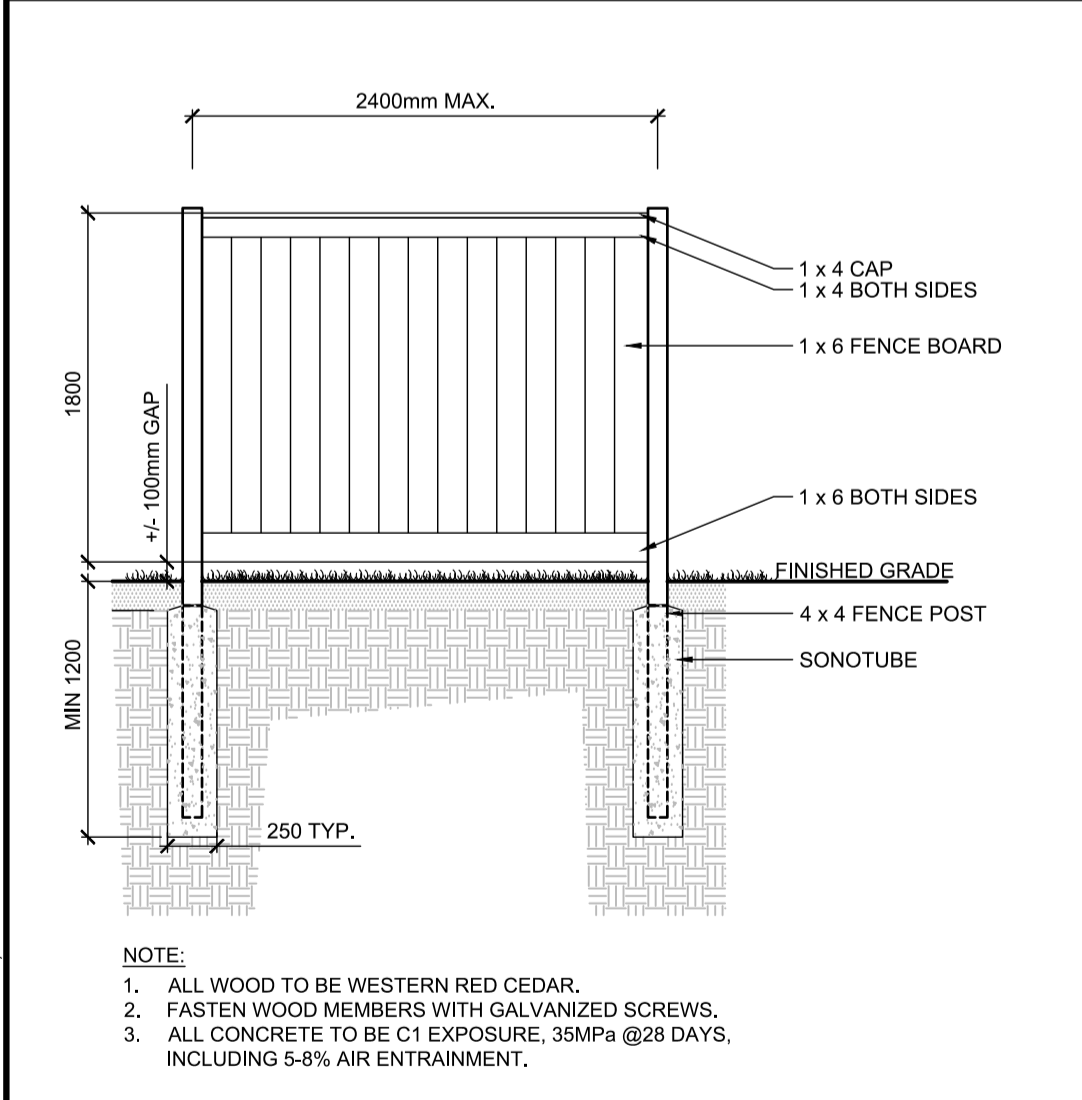


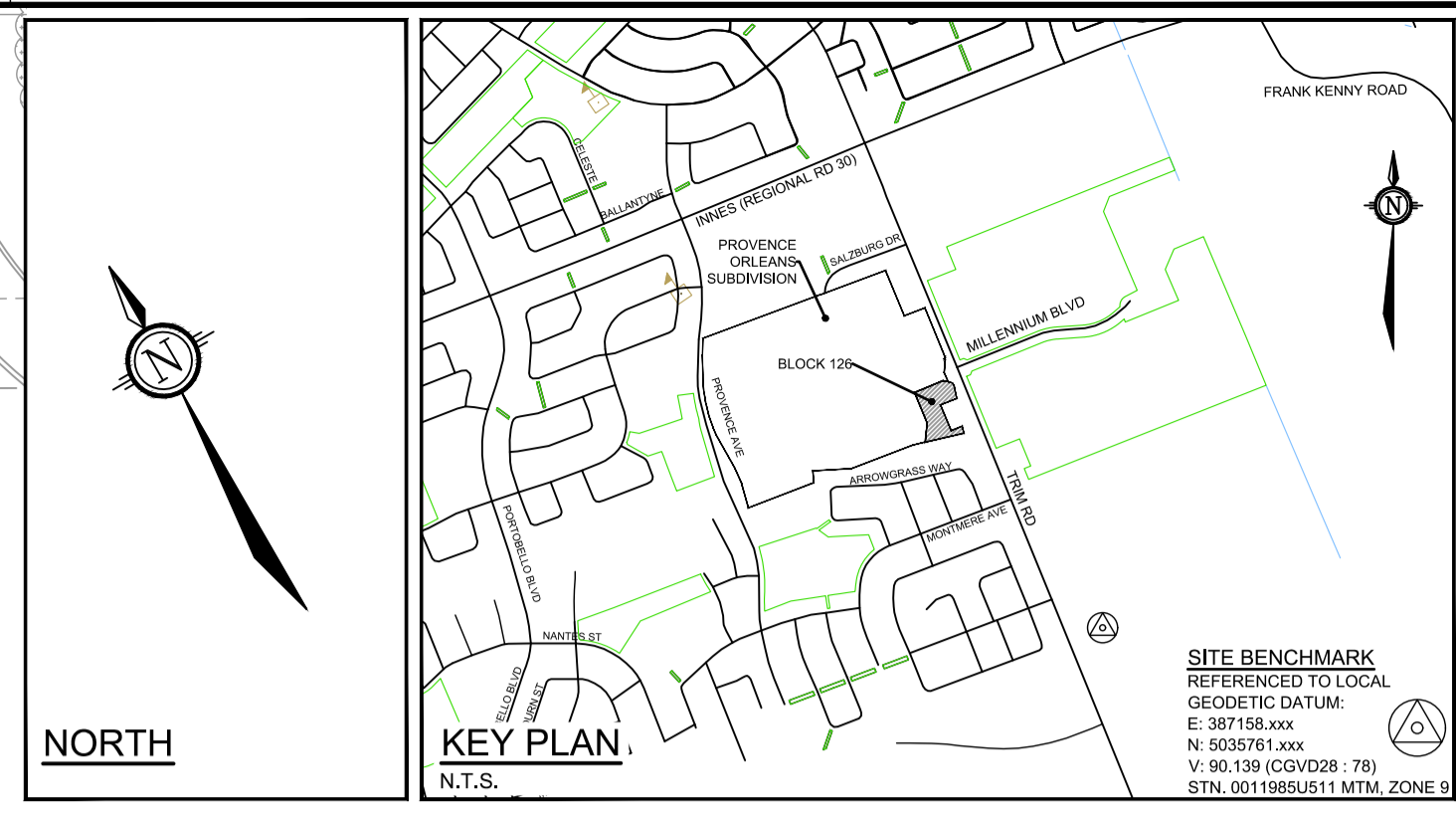
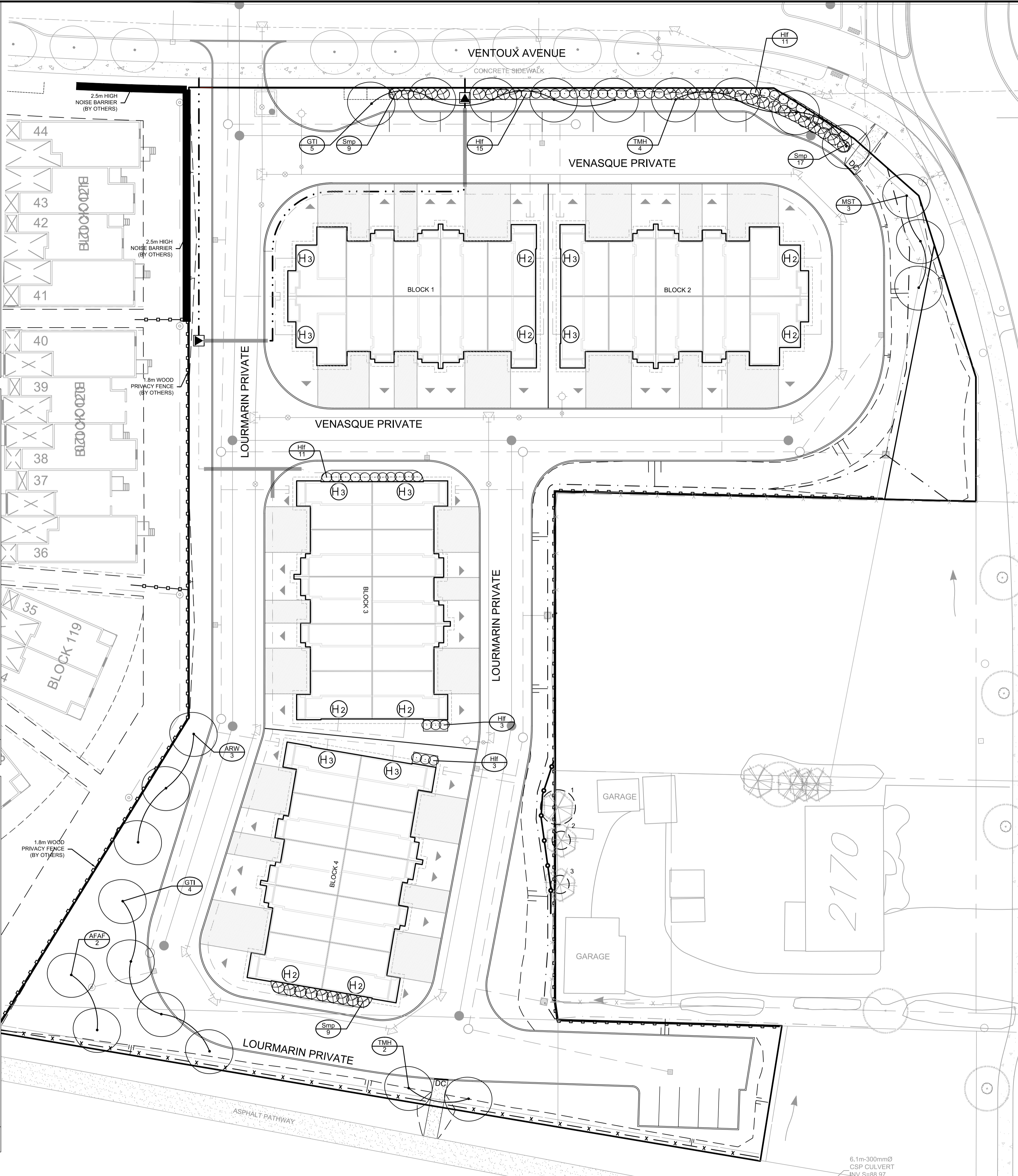
STANDARD DECIDUOUS TREE PLANTING D1



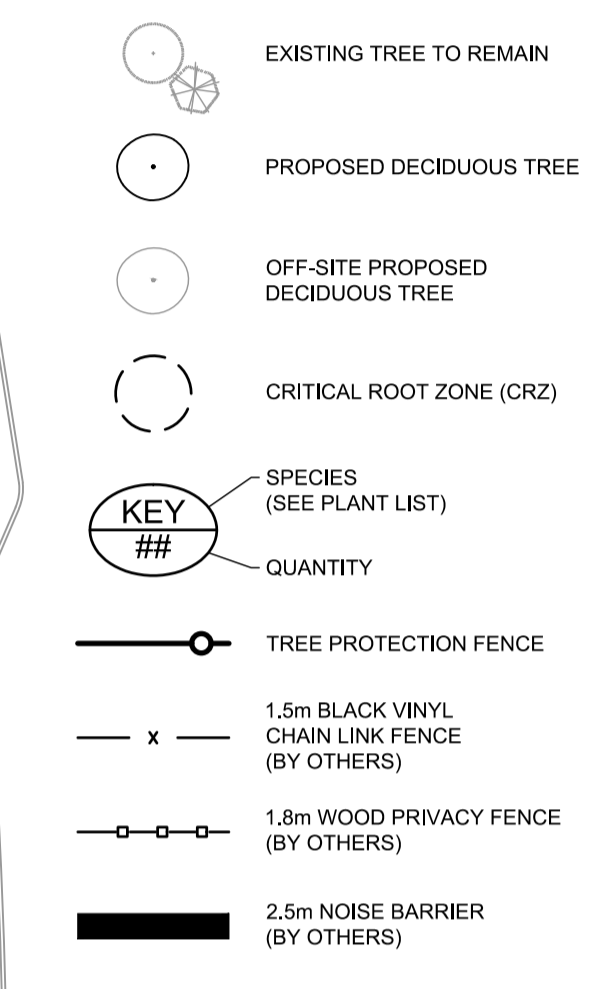
CHAIN LINK FENCE D2



WOOD PRIVACY FENCE D3



LANDSCAPE LEGEND:



PLANTING NOTES

- This drawing shall be read in conjunction with all relevant Architectural, Engineering, and related drawings and documents.
- Refer to Engineering Drawings for Grading. Provide drainage as indicated in grading plan. Round all tops and toes of slopes, smoothly. Compact all areas to 95% Standard Proctor Density unless otherwise noted.
- Refer to Architectural Drawings for site layout.
- Refer to Engineering Drawings for site servicing.
- Contractor must contact utility companies for locates prior to excavation or planting.
- It is essential to use the plans and details in conjunction with the specifications and notes.
- Plant material shall be No. 1 Grade and shall comply with Canadian Standards for Nursery Stock (latest edition) published by the Canadian Nursery Landscape Association. Use plant material with strong fibrous root system free of disease, defects or injuries, and structurally sound. Use trees with straight trunks, well and characteristically branched for species. Obtain approval from consultant of plant material at source prior to digging. All trees and shrubs shall be container grown, potted, WB or B/B, as indicated on Plant List. Bare root planting will only be acceptable for certain species and as approved by the Landscape Architect.
- Plant material substitutions shall not be permitted without the written approval from the consultant, with 48 hours notice, prior to shipping plant material.
- Plant locations are schematic / approximate only. Contractor shall stake out locations on site for approval by the Landscape Architect prior to installation. The illustrated number of plants shown in the Planting Plan supersedes the estimated number in the Plant List. Contractor to report any discrepancies to the Landscape Architect prior to installation. Contractor will assume full responsibility if the Landscape Architect is not notified.
- Ensure trees are thoroughly watered following planting. Monitor material and ensure adequate moisture until acceptance.
- In heavy clay or poorly drained soils, set root ball with root collar 75-100mm higher than finished grade.
- Sod and/or seed areas to receive 100mm depth topsoil as specified. Sod shall be No. 1 Kentucky Bluegrass Sod grown from minimum mixture of 3 Kentucky Bluegrass cultivars. Quality and source shall comply with Canadian Standards for Nursery Stock, Section 17, (latest edition) published by the Canadian Nursery Landscape Association. Unless otherwise specified, turf is to be maintained by the contractor until a second cutting is accepted by the Landscape Architect.
- Apply the following mineral fertilizer unless soil tests show other requirements: Sodded areas - (8-32-16) 8% Nitrogen, 32% Phosphorus, 16% Potash at a rate of 350kg/ha. Planting Beds - (8-32-16) 8% Nitrogen, 32% Phosphorus, 16% Potash as per manufacturer specifications.
- Reinstate all areas damaged or disturbed beyond the Limit of Work.
- Refer to specifications:
NOVA 8020 Imported Topsoil
NOVA 8030 Sod
NOVA 8040 Seed and Cover (Hydraulic Seeding)
NOVA 8060 Trees, Shrubs and Groundcover Planting
NOVA 8061 Maintenance of Planting

EXISTING TREE INVENTORY

No.	Botanical Name	Common Name	DBH (m)	CRZ (m)	Condition	Owner	Remarks	Recomm.
1	Thuja occidentalis	Eastern White Cedar	0.23	2.30	Good	Neighbour	Twin trunks at 2m HT. Otherwise healthy with good form.	PROTECT
2	Picea glauca	White Spruce	0.12	1.20	Good	Neighbour	Healthy, but awkward form with branches missing.	PROTECT
3	Picea glauca	White Spruce	0.12	1.20	Fair	Neighbour	Healthy, but topped at 2m HT. Appears as if top half is missing.	PROTECT

Note: In the past the parcel of land has been dedicated to annual agriculture crops. There are no existing trees on this block. Existing trees on adjacent properties are indicated on the plan, and these trees are to remain.

120057 - City Towns - Plant List

KEY	QTY	BOTANICAL NAME	COMMON NAME	SIZE	COND	SPACING
Deciduous Trees						
ARW	3	<i>Acer rubrum 'New World'</i>	New World Red Maple	50mm Cal	WB	As Shown
AFAF	2	<i>Acer x freemanii 'Autumn Fantasy'</i>	Autumn Fantasy Maple	50mm Cal	WB	As Shown
GTI	9	<i>Gleditsia triacanthos var. inermis 'Impcole'</i>	Imperial Honeylocust	50mm Cal	WB	As Shown
MST	3	<i>Malus 'Sugar Tyme'</i>	Sugar Tyme Crabapple	50mm Cal	WB	As Shown
TMH	6	<i>Tilia x mongolica 'Harvest Gold'</i>	Harvest Gold Linden	50mm Cal	WB	As Shown
Deciduous Shrubs						
Hif	43	<i>Hydrangea paniculata 'SMHPLQ'</i>	Little Quick Fire Hydrangea	50cm HT	PT	As Shown
Smp	35	<i>Syringa meyeri 'Palbin'</i>	Dwarf Korean Lilac	50cm HT	PT	As Shown

NOTE:
THE POSITION OF ALL POLE LINES, CONDUITS, WATER MAINS, SEWERS AND OTHER UNDERGROUND AND OVERGROUND UTILITIES AND STRUCTURES IS NOT NECESSARILY SHOWN ON THE CONTRACT DRAWINGS, AND WHERE SHOWN, THE ACCURACY OF THE POSITION OF SUCH UTILITIES AND STRUCTURES IS NOT GUARANTEED. BEFORE STARTING WORK, DETERMINE THE EXACT LOCATION OF ALL SUCH UTILITIES AND STRUCTURES AND ASSUME ALL LIABILITY FOR DAMAGE TO THEM.

<p>3. CITY COMMENTS SEP 25/20 RGJ</p> <p>2. ISSUED FOR COORDINATION SEP 18/20 RGJ</p> <p>1. ISSUED FOR APPROVAL JUN 26/20 RGJ</p>				<p>SCALE</p> <p>1:300</p> <p>0 3 6 9 12</p>	<p>DESIGN</p> <p>KEW</p> <p>CHECKED</p> <p>RGJ</p> <p>DRAWN</p> <p>KEW</p> <p>CHECKED</p> <p>RGJ</p> <p>APPROVED</p> <p>RGJ</p>	<p>FOR REVIEW ONLY</p>
---	--	--	--	---	---	-------------------------------

<p>NOVATECH</p> <p>Engineers, Planners & Landscape Architects</p> <p>Suite 200, 240 Michael Cowpland Drive Ottawa, Ontario, Canada K2M 1P6</p> <p>Telephone (613) 254-9643 Facsimile (613) 254-5867 Website www.novatech-eng.com</p>	<p>CITY OF OTTAWA PROVENCE ORLEANS SUBDIVISION BLOCK 126</p> <p>DRAWING NAME</p> <p>LANDSCAPE PLAN AND TREE CONSERVATION REPORT</p>	<p>PROJECT No.</p> <p>120057</p> <p>REV</p> <p>REV # 3</p> <p>DRAWING No.</p> <p>120057-L</p>
---	--	---