

PROJECT INFORMATION	
ZONING	GM[2340]-h
SITE AREA	22,083 sq. m. (237,484 sq. ft.)
BUILDING HEIGHT	6 Storeys or 24.0 M
FRONT YARD SETBACK	3.0 M
CORNER YARD SETBACK	3.0 M
INTERIOR YARD SETBACK	5.0 M
REAR YARD SETBACK	0.0 M
LANDSCAPE BUFFER AROUND A PARKING LOT	3.0 M
LOADING SPACE - METRO	1
LOADING SPACE - RETAIL 'A'	0
PARKING - FOOD STORE	-3.4 PER 100m ² OF G.F.A.
PARKING - RETAIL	-3.4 PER 100m ² OF G.F.A.
GROSS BUILDING - AREAS	
GFA - CITY OF OTTAWA'S DEFINITION	2,821.3 sq. m. (31,445 sq. ft.)
RETAIL FOOD - METRO	696.8 sq. m. (7,500 sq. ft.)
RETAIL STORE 'A' (ESTIMATE)	622.5 sq. m. (6,700 sq. ft.)
RETAIL STORE 'B' (ESTIMATE)	795.0 sq. m. (8,557 sq. ft.)
MIXED USE 'C' (ESTIMATE)	5,008.5 sq. m. (54,197 sq. ft.)
TOTAL AREA	5,008.5 sq. m. (54,197 sq. ft.)
GFA - BUILDING FOOTPRINT	
RETAIL FOOD - METRO	4,024.0 sq. m. (43,315 sq. ft.)
RETAIL STORE 'A'	929.0 sq. m. (10,000 sq. ft.)
RETAIL STORE 'B'	830.0 sq. m. (8,935 sq. ft.)
MIXED USE 'C'	2 x 5,000 sq. m. 2 x 5,700 sq. m. (11,410 sq. ft.)
TOTAL AREA	6,843.0 sq. m. (73,650 sq. ft.)
CAR PARKING	
REQUIRED	
METRO - RETAIL FOOD	-3.4 PER 100m ² OF G.F.A.
RETAIL - BLDG 'A'	-3.4 PER 100m ² OF G.F.A.
RESTAURANT - BLDG 'B'	-3.4 PER 100m ² OF G.F.A.
1st FL. RETAIL - BLDG 'C'	-3.4 PER 100m ² OF G.F.A.
2nd FL. OFFICE - BLDG 'C'	-3.4 PER 100m ² OF G.F.A.
TOTAL	171
PROVIDED	
METRO - RETAIL FOOD	-4.15 PER 1,000 SF OF FOOTPRINT AREA
RETAIL - BLDG 'A'	30
RETAIL - BLDG 'B'	25
1st FL. RETAIL - BLDG 'C'	15
2nd FL. OFFICE - BLDG 'C'	15
TOTAL	275
METRO PARKING SPACE	2.74 x 5.75 m
STANDARD PARKING SPACE	2.5 x 5.2 m
SMALL CAR PARKING SPACE	2.4 x 4.8 m
BARRIER FREE SPACE	3.66 x 5.2 m
BICYCLE PARKING	
REQUIRED	
COMMERCIAL RETAIL	-1.0 PER 250m ² OF G.F.A.
PROVIDED	24
LOADING	
PROVIDED	
COMMERCIAL RETAIL	-2,000m ² & OVER OF G.F.A.
COMMERCIAL CAFE	-0m ² TO 350m ² OF G.F.A.
TOTAL	3
LOT COVERAGE	
PAVED SURFACE =	10,464.1 sq. m. 47.4%
BUILDING FOOTPRINT =	6,281.0 sq. m. 28.5%
LANDSCAPE OPEN SPACE =	5,317.9 sq. m. 24.1%
TOTAL =	22,063.0 sq. m. 100.0%

DRAWING NOTES	
1	PROPERTY LINE
2	BUILDING SETBACK LINE
3	PROPOSED COMMERCIAL BUILDING
4	FUTURE DEVELOPMENT AREA
5	LANDSCAPE ISLAND WITH 150mm BARRIER CURB
6	BICYCLE PARKING SPACES (0.6 x 1.8M) WITH RACK
7	HYDRO EQUIPMENT
8	CONCRETE SIDEWALK, WIDTH AS NOTED
9	TWSI TO BE LOCATED AND INSTALLED AS PER CITY REQUIREMENTS
10	PEDESTRIAN CROSS WALK WITH DEPRESSED CURBS
11	FIRE HYDRANT
12	STANDARD PARKING SPACE (2.6 X 5.2 M)
13	BARRIER FREE PAVING SPACE
14	DROPPED GARBAGE / LOADING BAYS WITH SCREEN WALL
15	LIGHT STANDARD - LOCATION TO BE CONFIRMED
16	CART CORRAL
17	PAINTED ISLAND AND/OR CURBS
18	PYLON SIGN
19	ELECTRIC VEHICLE SPACE WITH CHARGING STATION AND SIGNAGE
20	FAMILY PARKING SPACE WITH SIGNAGE
21	WATER STORAGE TANK, SEE CIVIL
22	BUILDING CANOPY
23	2 WAY ACCESS DRIVEWAY / ROAD
24	1 WAY ACCESS DRIVEWAY / ROAD
25	SIAMISE CONNECTION
26	FIRE ROUTE
27	SOFT LANDSCAPING
28	EXISTING FIRE HYDRANT
29	EXISTING LIGHT STANDARD
30	EXISTING HYDRO POLE
31	RELOCATE EXISTING LIGHT STANDARD
32	INTERNAL GARBAGE / RECYCLING AREA
33	TEMPORARY SNOW STORAGE AREA
34	MOUNTABLE CURB WITH CONCRETE TRUCK APRON
35	3.0m HT. SOUND BARRIER FENCE
36	BENCH
37	PAINTED ISLAND

NOTATION SYMBOLS:	
(01)	INDICATES DRAWING NOTES, LISTED ON EACH SHEET.
(02)	INDICATES ASSEMBLY TYPE; REFER TO TYPICAL ASSEMBLY SCHEDULE.
(03)	INDICATES WINDOW TYPE; REFER TO WINDOW ELEVATIONS AND DETAILS ON A300 SERIES.
(04)	INDICATES DOOR TYPE; REFER TO DOOR SCHEDULE AND DETAILS ON A300 SERIES.
(05)	DETAIL NUMBER
(06)	TITLE
(07)	SCHEMATIC
(08)	DETAIL REFERENCE PAGE
(09)	DETAIL CROSS REFERENCE PAGE

REVISIONS:		
1	REVISED FOR 1st ROUND OF COMMENTS	Apr. 20, 21
2	ISSUED FOR SITE PLAN CONTROL	Aug. 31, 20
3	ISSUED FOR CONSULTANT REVIEW	July 9, 20
4	ISSUED FOR CONSULTANT REVIEW	June 25, 20
No.	DESCRIPTION	DATE

ARCHITECT SEAL:

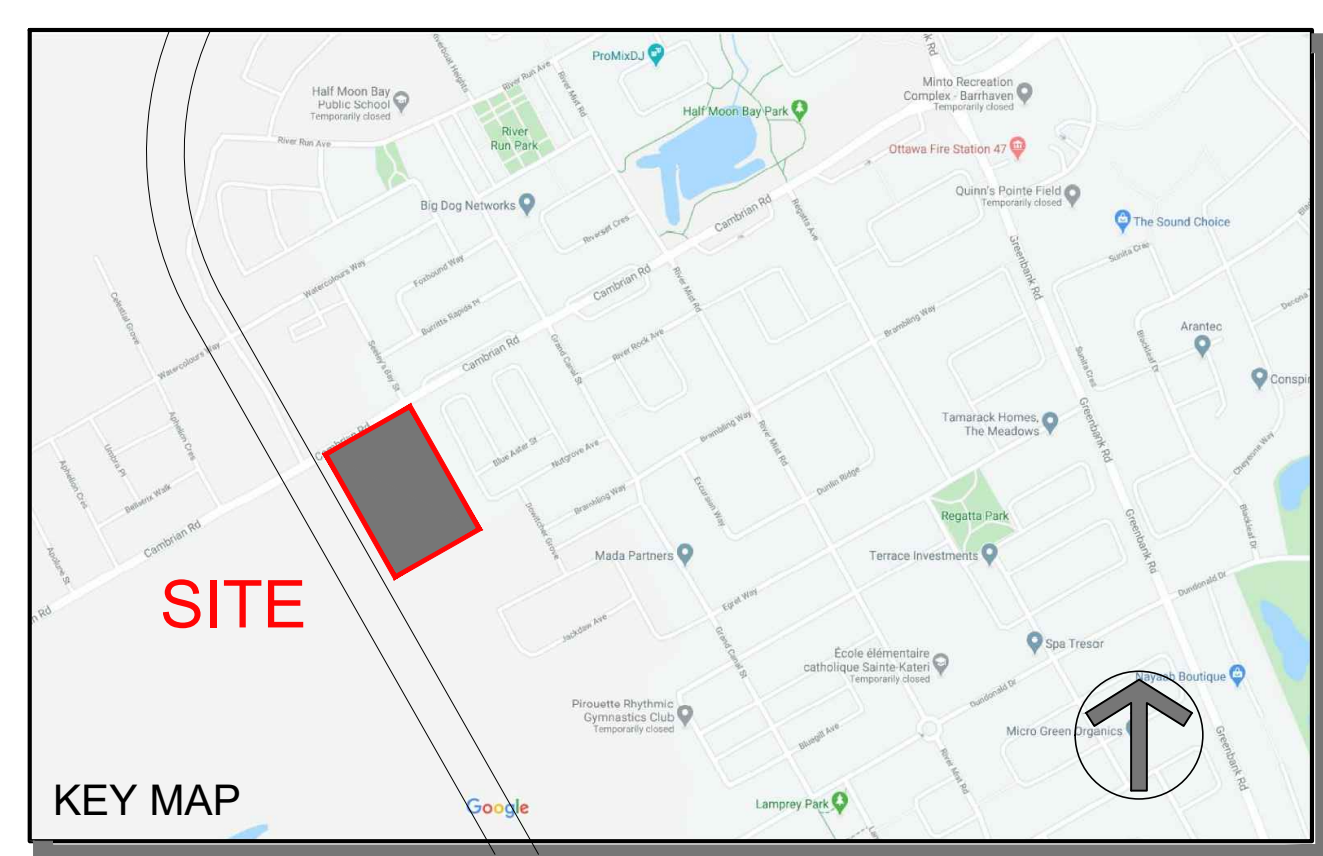
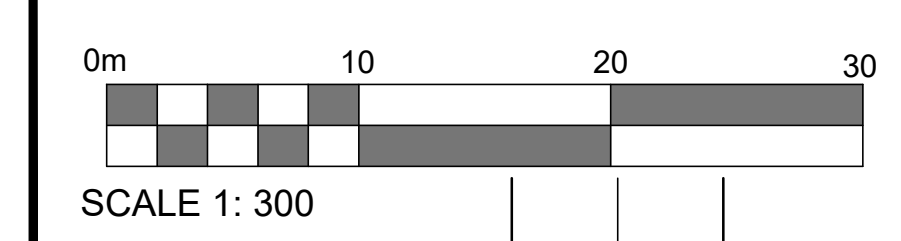
ARCHITECT:
 rla/architecture
 roderick lahey architect inc.
 56 beech street, ottawa, ontario K1S 3J6
 t. 613.724.9932 f. 613.724.1209 rlaarchitecture.ca

PROJECT TITLE:
METRO - BARRHAVEN
GREENBANK ROAD @
CAMBRIAN ROAD
 OTTAWA ONTARIO

SHEET TITLE:
SITE PLAN

DRAWN:	RV	CHECKED:	R.V.
SCALE:	1:300	SHEET No.:	SP-1
PROJECT No.:	1949		

1 SITE PLAN
 SP-1
 SCALE = 1 : 300



TRANSPORTATION ENGINEER
 CGH Transportation Inc.
 13 Markham Avenue
 Ottawa, ON K2G 3Z1
 Tel: (343) 999-9117
 Email: Christopher.Gordon@CGHTransportation.com

LANDSCAPE ARCHITECT
 Gino J. Aiello Landscape Architect
 110 Didsbury Road Unit 9,
 Ottawa, Ontario K2E 0C2
 Tel: (613) 852-1343
 Cell: (613)
 Email: gino@giala.com

URBAN PLANNER
 FoTenn Consultants Inc.
 396 Cooper Street, Unit 300
 Ottawa, ON Canada, K2P 2H7
 Tel.: (613) 730-5709
 Tel.: (613) 730-1136
 E-Mail: posen@fotenn.com

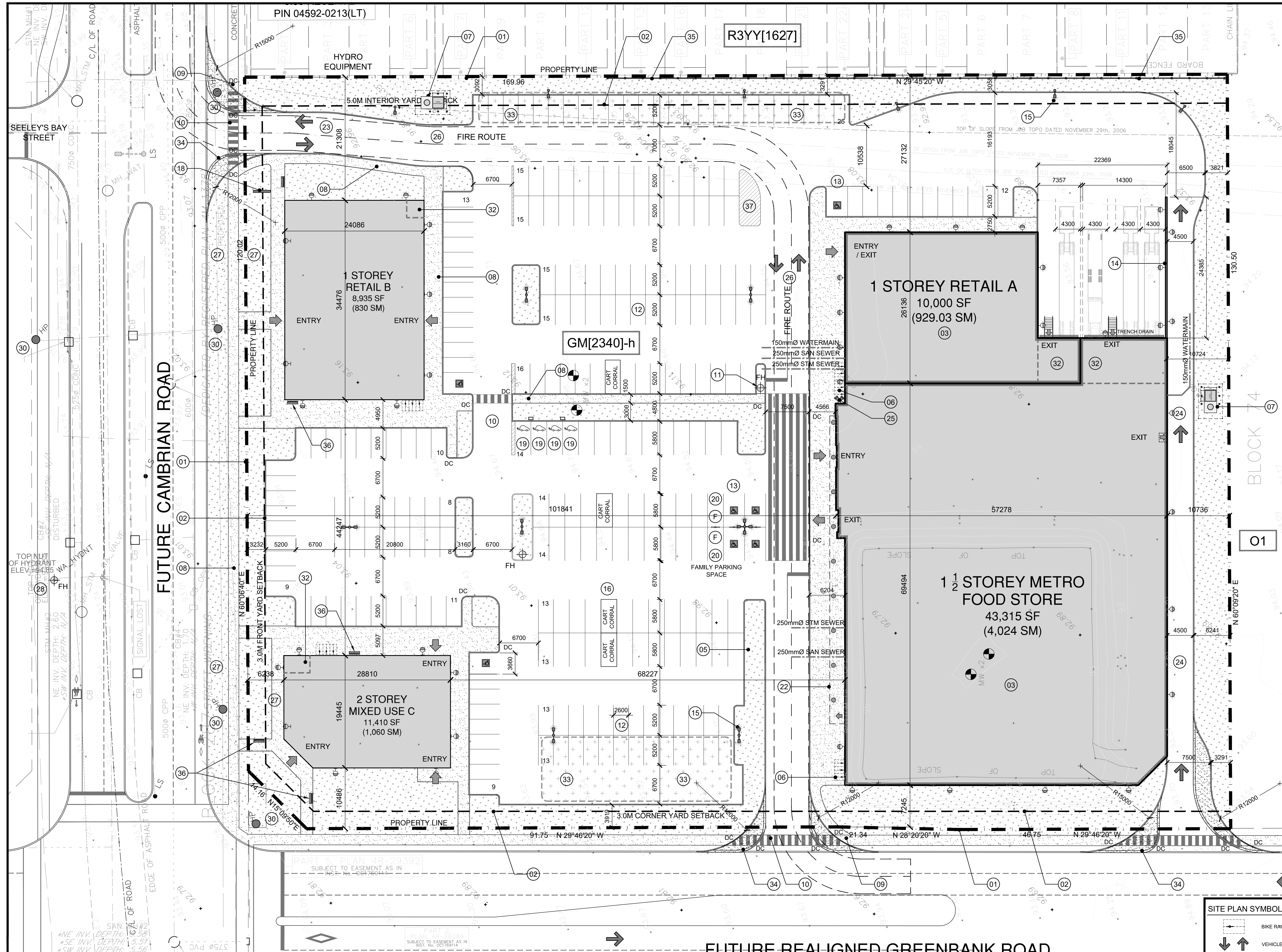
PROJECT DEVELOPER
 Metro Ontario Inc.
 5150 Spectrum Way, Suite 401,
 Mississauga, ON, L4W 5G2
 Tel: (416) 234-6158
 Cell: (416) 523-6168
 Fax: (416) 234-6927
 E-Mail: Antony.Cannell@metro.ca

GEOTECHNICAL ENGINEER
 paterson group
 154 Colonnade Road South
 Ottawa, Ontario
 K2E 7J5
 Tel: 613.226-7381
 Email: DGilbert@Patersongroup.ca

CIVIL ENGINEER
 David Schaeffer Engineering Ltd.
 120 Iber Road, Unit 203
 Stittsville, ON K2S 1E9
 Tel: (613) 836-0856
 Fax: (613) 836-7183
 Email: bchow@DSEL.ca

SURVEYOR
 J.D. Barnes Limited
 2430 Don Reid Drive, Suite 204,
 Ottawa, Ontario, K1H 1E1
 Tel: (613) 731-7244
 Fax: (613) 731-8955
 Cell: (613) 852-9260
 E-Mail: cfox@jdbarnes.com

LEGAL DESCRIPTION
 PLAN OF SURVEY SHOWING
 TOPOGRAPHIC DETAIL OF
 PART OF LOT 10
 CONCESSION 3 (RIDEAU FRONT)
 CITY OF OTTAWA



PROJECT INFORMATION

ZONING	GM2340-h
SITE AREA	22,063.0 sq. m. (237,484 sq. ft.)
BUILDING HEIGHT	6 Storeys or 24.0 M
FRONT YARD SETBACK	3.0 M
CORNER YARD SETBACK	3.0 M
INTERIOR YARD SETBACK	5.0 M
REAR YARD SETBACK	0.0 M
LANDSCAPE BUFFER AROUND A PARKING LOT	3.0 M
LOADING SPACE - METRO	1.0 M
LOADING SPACE - RETAIL 'A'	0
PARKING - FOOD STORE	-3.4 PER 100m ² OF G.F.A.
PARKING - RETAIL	-3.4 PER 100m ² OF G.F.A.

GROSS BUILDING - AREAS

GFA - CITY OF OTTAWA'S DEFINITION	2,821.3 sq. m. (3,144.5 sq. ft.)
RETAIL FOOD - METRO	696.8 sq. m. (7,500 sq. ft.)
RETAIL STORE 'A' (ESTIMATE)	622.5 sq. m. (6,700 sq. ft.)
RETAIL STORE 'B' (ESTIMATE)	795.0 sq. m. (8,557 sq. ft.)
MIXED USE 'C' (ESTIMATE)	5,035.1 sq. m. (54,197 sq. ft.)
TOTAL AREA	6,843.0 sq. m. (73,650 sq. ft.)

CAR PARKING

REQUIRED	
METRO - RETAIL FOOD	-3.4 PER 100m ² OF G.F.A.
RETAIL - BLDG 'A'	-3.4 PER 100m ² OF G.F.A.
RESTAURANT - BLDG 'B'	-3.4 PER 100m ² OF G.F.A.
1st FL. RETAIL - BLDG 'C'	-3.4 PER 100m ² OF G.F.A.
2nd FL. OFFICE - BLDG 'C'	-3.4 PER 100m ² OF G.F.A.
TOTAL	171
PROVIDED	
METRO - RETAIL FOOD	-4.15 PER 1,000m ² OF FOOTPRINT AREA
RETAIL - BLDG 'A'	30
RETAIL - BLDG 'B'	25
1st FL. RETAIL - BLDG 'C'	15
2nd FL. OFFICE - BLDG 'C'	15
TOTAL	275

LOADING

REQUIRED	
COMMERCIAL RETAIL	-1.0 PER 250m ² OF G.F.A.
PROVIDED	24
LOADING	
COMMERCIAL RETAIL	-2,000m ² & OVER OF G.F.A.
COMMERCIAL CAFE	-0m ² TO 350m ² OF G.F.A.
TOTAL	3

LOT COVERAGE

PAVED SURFACE	10,464.1 sq. m.	47.4%
BUILDING FOOTPRINT	6,281.0 sq. m.	28.5%
LANDSCAPE OPEN SPACE	5,317.9 sq. m.	24.1%
TOTAL	22,063.0 sq. m.	100.0%

REVISIONS

No.	DESCRIPTION	DATE
1	REVISED FOR 1st ROUND OF COMMENTS	Apr. 29, 21
2	ISSUED FOR SITE PLAN CONTROL	Aug. 31, 20
3	ISSUED FOR CONSULTANT REVIEW	July 9, 20

DRAWING NOTES

- PROPERTY LINE
- BUILDING SETBACK LINE
- PROPOSED COMMERCIAL BUILDING
- FUTURE DEVELOPMENT AREA
- LANDSCAPE ISLAND WITH 150mm BARRIER CURB
- BICYCLE PARKING SPACES (0.6 x 1.8M) WITH RACK
- HYDRO EQUIPMENT
- CONCRETE SIDEWALK, WIDTH AS NOTED
- TWSI TO BE LOCATED AND INSTALLED AS PER CITY REQUIREMENTS
- PEDESTRIAN CROSS WALK WITH DEPRESSED CURBS
- FIRE HYDRANT
- STANDARD PARKING SPACE (2.6 x 5.2 M)
- BARRIER FREE PARKING SPACE
- DROPPED GARBAGE / LOADING BAYS WITH SCREEN WALL
- LIGHT STANDARD - LOCATION TO BE CONFIRMED
- CART CORRAL
- PAINTED ISLAND AND/OR CURBS
- PYLON SIGN
- ELECTRIC VEHICLE SPACE WITH CHARGING STATION AND SIGNAGE
- FAMILY PARKING SPACE WITH SIGNAGE
- WATER STORAGE TANK, SEE CIVIL
- BUILDING CANOPY
- 2 WAY ACCESS DRIVEWAY / ROAD
- 1 WAY ACCESS DRIVEWAY / ROAD
- SIAMESE CONNECTION
- FIRE ROUTE
- SOFT LANDSCAPING
- EXISTING FIRE HYDRANT
- EXISTING LIGHT STANDARD
- EXISTING HYDRO POLE
- RELOCATE EXISTING LIGHT STANDARD
- INTERNAL GARBAGE / RECYCLING AREA
- TEMPORARY SNOW STORAGE AREA
- MOUNTABLE CURB WITH CONCRETE TRUCK APRON
- 3.0m HT. SOUND BARRIER FENCE
- BENCH
- PAINTED ISLAND

SITE PLAN SYMBOLS

- BIKE RACK
- VEHICLE CIRCULATION
- MAIN ENTRANCE
- SERVICE DOOR / FIRE EXIT
- PROPERTY LINE
- ZONING SETBACKS
- PARKING LOT LIGHTING
- BARRIER FREE PARKING SPACE AS PER PARKING BY-LAW SECTION 3.1 - 3.6m WIDE WITH SIGNAGE AND PAINTED DECALS
- ELECTRIC VEHICLE CHARGING STATION PARKING SPACE, WITH SIGNAGE AND PAINTED DECALS
- FAMILY VEHICLE PARKING SPACE, WITH SIGNAGE AND PAINTED DECALS
- BUILDING ROOF DRAINS
- POT LIGHT UNDER CANOPY
- EXTERIOR WALL LIGHT
- TEMPORARY SNOW STORAGE

IT IS THE RESPONSIBILITY OF THE APPROPRIATE CONTRACTOR TO CHECK AND VERIFY ALL DIMENSIONS ON SITE AND TO REPORT ALL ERRORS AND/OR OMISSIONS TO THE ARCHITECT.

ALL CONTRACTORS MUST COMPLY WITH ALL PERTINENT CODES AND BY-LAWS.

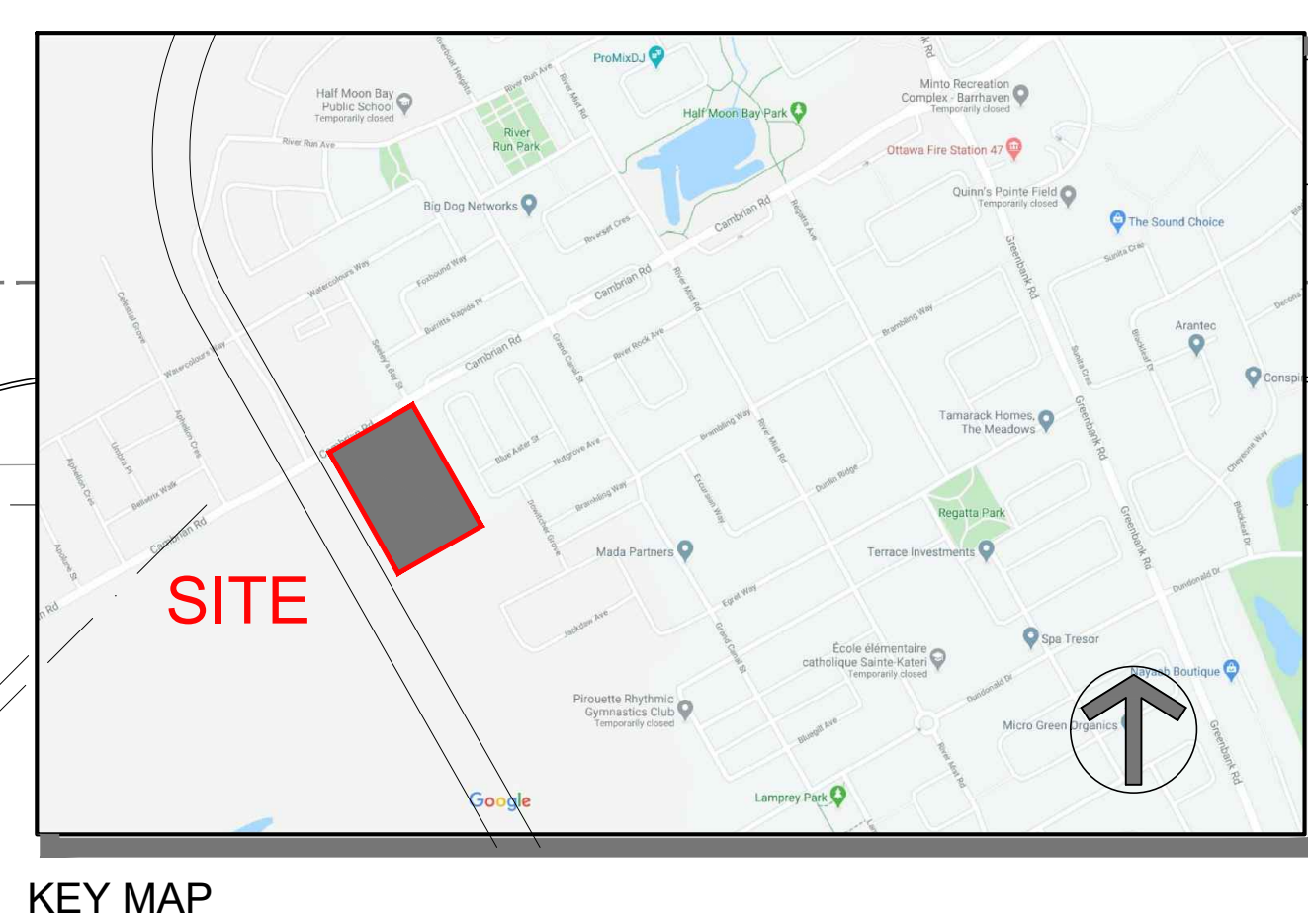
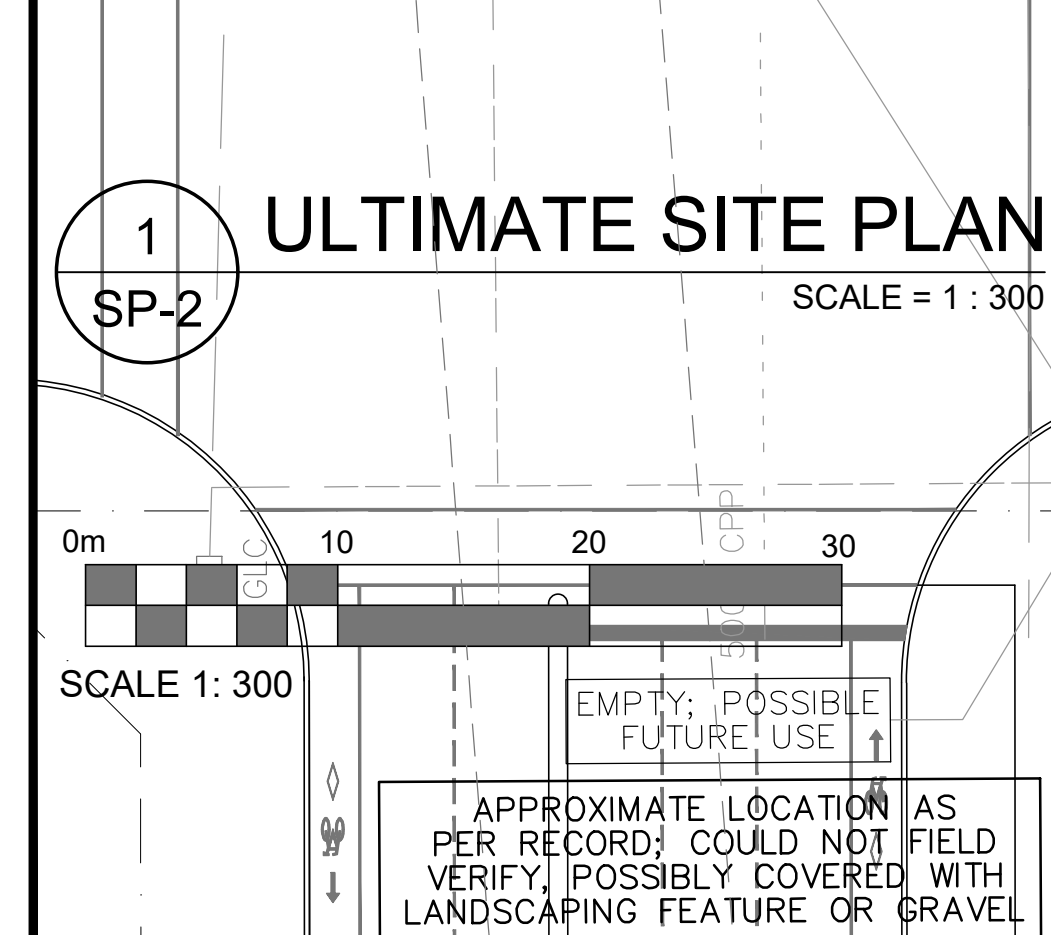
THIS DRAWING MAY NOT BE USED FOR CONSTRUCTION UNTIL SIGNED BY THE ARCHITECT.

DO NOT SCALE DRAWINGS.

COPYRIGHT RESERVED.

NOTATION SYMBOLS:

- INDICATES DRAWING NOTES, LISTED ON EACH SHEET.
- INDICATES ASSEMBLY TYPE; REFER TO TYPICAL ASSEMBLIES SCHEDULE.
- INDICATES WINDOW TYPE; REFER TO WINDOW ELEVATIONS AND DETAILS ON A300 SERIES.
- INDICATES DOOR TYPE; REFER TO DOOR SCHEDULE AND DETAILS ON A300 SERIES.
- DETAIL NUMBER
- TITLE
- DETAIL REFERENCE PAGE
- DETAIL CROSS REFERENCE PAGE



TRANSPORTATION ENGINEER
CGH Transportation Inc.
13 Markham Avenue
Ottawa, ON K2G 3Z1
Tel: (343) 999-9117
Email: Christopher.Gordon@CGHTransportation.com

LANDSCAPE ARCHITECT
Gino J. Aiello Landscape Architect
110 Didsbury Road Unit 9,
Ottawa, Ontario K2E 0C2
Tel: (613) 852-1343
Cell: (613)
Email: gino@giala.com

URBAN PLANNER
FoTenn Consultants Inc.
396 Cooper Street, Unit 300
Ottawa, ON Canada, K2P 2H7
Tel: (613) 730-5709
Cell: (416) 523-6168
Fax: (613) 730-1136
E-Mail: posen@fotenn.com

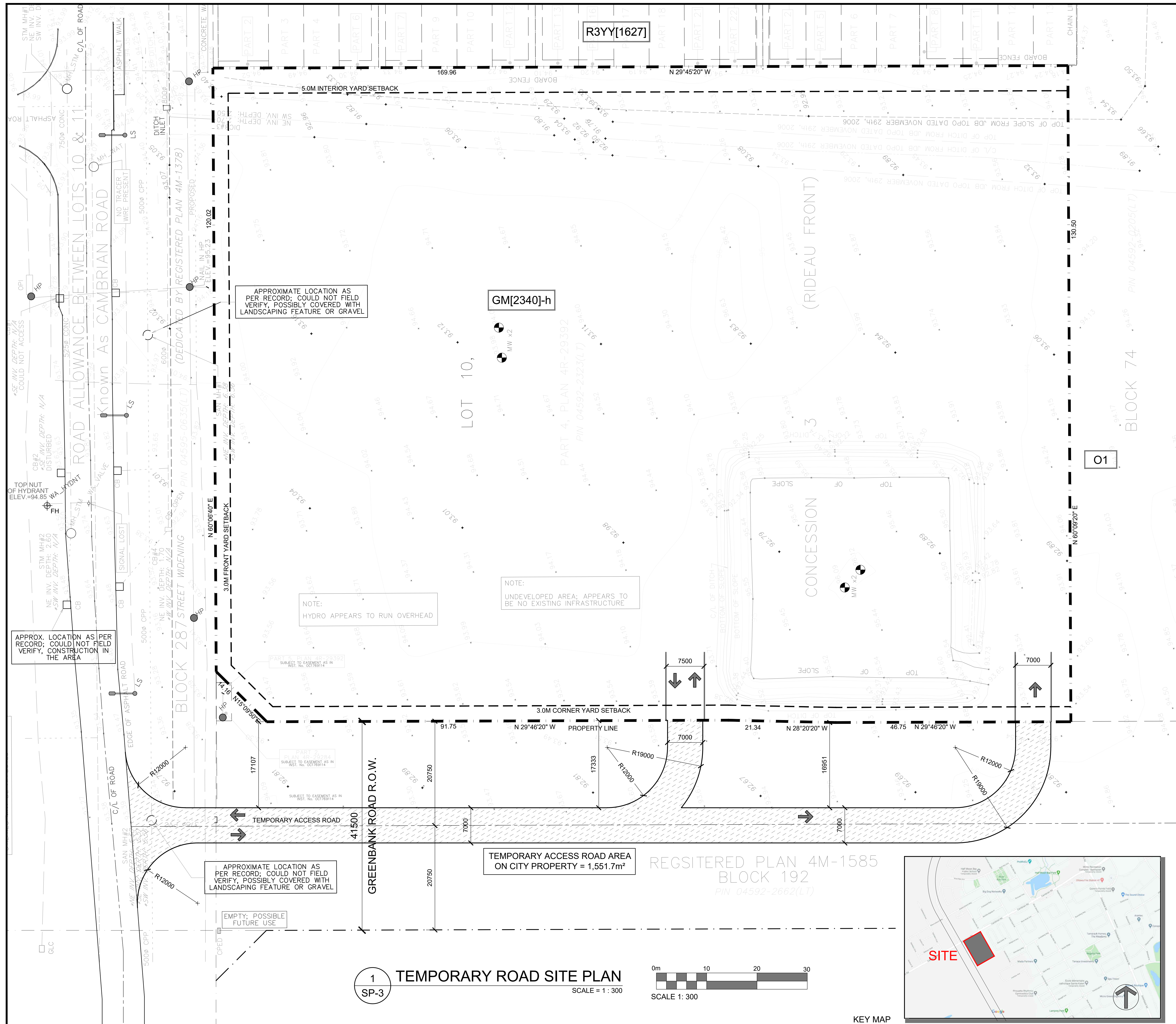
PROJECT DEVELOPER
Metro Ontario Inc.
5150 Spectrum Way, Suite 401,
Mississauga, ON, L4W 5G2
Tel: (416) 234-6158
Cell: (416) 523-6168
Fax: (416) 234-6927
E-Mail: Antony.Cannell@metro.ca

GEOTECHNICAL ENGINEER
paterson group
154 Colonnade Road South
Ottawa, Ontario
K2E 7J5
Tel: 613.226-7381
Email: DGilbert@Patersongroup.ca

CIVIL ENGINEER
David Schaeffer Engineering Ltd.
120 Iber Road, Unit 203
Stittsville, ON K2S 1E9
Tel: (613) 836-0856
Fax: (613) 836-7183
Email: bchow@DSEL.ca

SURVEYOR
J.D. Barnes Limited
2430 Don Reid Drive, Suite 204,
Ottawa, Ontario, K1H 1E1
Tel: (613) 731-7244
Fax: (613) 731-8955
Cell: (613) 852-9260
E-Mail: cfox@jdbarnes.com

LEGAL DESCRIPTION
PLAN OF SURVEY SHOWING
TOPOGRAPHIC DETAIL OF
PART OF LOT 10
CONCESSION 3 (RIDEAU FRONT)
CITY OF OTTAWA



PROJECT INFORMATION	
ZONING	GM[2340]-h
SITE AREA	22,083.0 sq. m. (237,484) sq. ft.
BUILDING HEIGHT	6 Storeys or 24.0 M
FRONT YARD SETBACK	3.0 M
CORNER YARD SETBACK	3.0 M
INTERIOR YARD SETBACK	5.0 M
REAR YARD SETBACK	3.0 M
LANDSCAPE BUFFER AROUND A PARKING LOT	0.0 M
LOADING SPACE - METRO	1
LOADING SPACE - RETAIL 'A'	0
PARKING - FOOD STORE	-3.4 PER 100M ² OF G.F.A. 99
PARKING - RETAIL	-3.4 PER 100M ² OF G.F.A. 24
NOTATION SYMBOLS:	
(N)	INDICATES DRAWING NOTES, LISTED ON EACH SHEET.
(A)	INDICATES ASSEMBLY TYPE; REFER TO TYPICAL ASSEMBLIES SCHEDULE.
(W)	INDICATES WINDOW TYPE; REFER TO WINDOW ELEVATIONS AND DETAILS ON A800 SERIES.
(D)	INDICATES DOOR TYPE; REFER TO DOOR SCHEDULES AND DETAILS ON A800 SERIES.
(000)	INDICATES NUMBER TYPE; REFER TO DOOR SCHEDULES AND DETAILS ON A800 SERIES.
(-)	DETAIL NUMBER
(-)	TITLE
(-)	SCHEMATIC
(-)	DETAIL REFERENCE PAGE
(-)	DETAIL CROSS REFERENCE PAGE
PROJECT DEVELOPER	
Metro Ontario Inc. 5150 Spectrum Way, Suite 401, Mississauga, ON L4W 5G2 Tel: (416) 234-6158 Cell: (416) 523-6168 Fax: (416) 234-6927 E-Mail: Antony.Cannell@metro.ca	
LEGAL DESCRIPTION	
PLAN OF SURVEY SHOWING TOPOGRAPHIC DETAIL OF PART OF LOT 10 CONCESSION 3 (RIDEAU FRONT) CITY OF OTTAWA	
URBAN PLANNER	
FoTenn Consultants Inc. 396 Cooper Street, Unit 300 Ottawa, ON Canada, K2P 2H7 Tel: (613) 730-5709 Fax: (613) 730-1136 E-Mail: posen@fotenn.com	
SURVEYOR	
J.D. Barnes Limited 2430 Don Reid Drive, Suite 204, Ottawa, Ontario, K1H 1E1 Tel: (613) 731-7244 Fax: (613) 731-8955 Cell: (613) 852-9260 E-Mail: cfox@jdbarnes.com	
LANDSCAPE ARCHITECT	
Gino J. Aiello Landscape Architect 110 Didsbury Road Unit 9, Ottawa, Ontario K2E 0C2 Tel: (613) 852-1343 Cell: (613) Email: gino@giala.com	
CIVIL ENGINEER	
David Schaeffer Engineering Ltd. 120 Iber Road, Unit 203 Stittsville, ON K2S 1E9 Tel: (613) 836-0856 Fax: (613) 836-7183 Email: smerick@dsel.ca	
TRANSPORTATION ENGINEER	
CGH Transportation Inc. 13 Markham Avenue Ottawa, ON K2G 3Z1 Tel: (343) 999-9117 Email: Christopher.Gordon@CGHTransportation.com	
GEOTECHNICAL ENGINEER	
paterson group 154 Colonnade Road South Ottawa, Ontario K2E 7J5 Tel: 613.226-7381 Email: D.Gilbert@Patersongroup.ca	
ARCHITECT	
rla/architecture roderick lahey architect inc. 56 beech street, ottawa, ontario K1S 3J6 t. 613.724.9932 f. 613.724.1209 rlaarchitecture.ca	
CLIENT:	
metro 25 Vickers Rd Bldg A 2 Floor, Etobicoke Ont M9B 1C1 Tel: 416-234-6118 Fax: 416-234-6927	
PROJECT TITLE:	
METRO - BARRHAVEN GREENBANK ROAD @ CAMBRIAN ROAD OTTAWA ONTARIO	
SHEET TITLE:	
TEMPORARY ROAD SITE PLAN	
DRAWN:	
RV	CHECKED: R.V.
SCALE:	
1:300	SHEET No.
PROJECT No:	
1949	SP-3

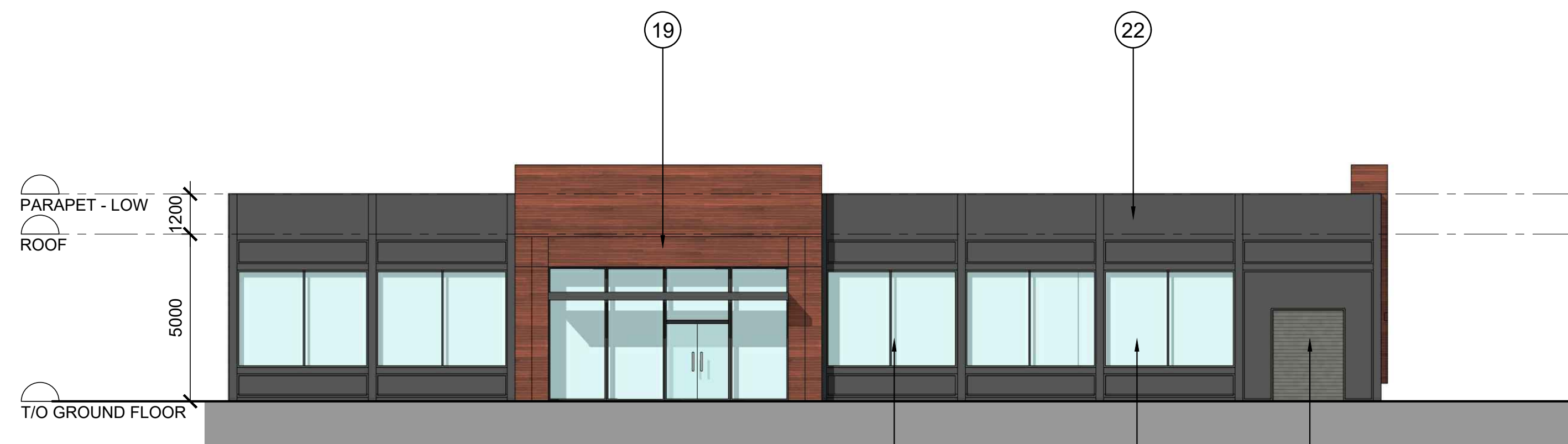
IT IS THE RESPONSIBILITY OF THE APPROPRIATE CONTRACTOR TO CHECK AND VERIFY ALL DIMENSIONS ON SITE AND TO REPORT ALL ERRORS AND/OR OMISSIONS TO THE ARCHITECT.
 ALL CONTRACTORS MUST COMPLY WITH ALL PERTINENT CODES AND BY-LAWS.
 THIS DRAWING MAY NOT BE USED FOR CONSTRUCTION UNTIL SIGNED BY THE ARCHITECT.
 DO NOT SCALE DRAWINGS.
 COPYRIGHT RESERVED.

NOTATION SYMBOLS:

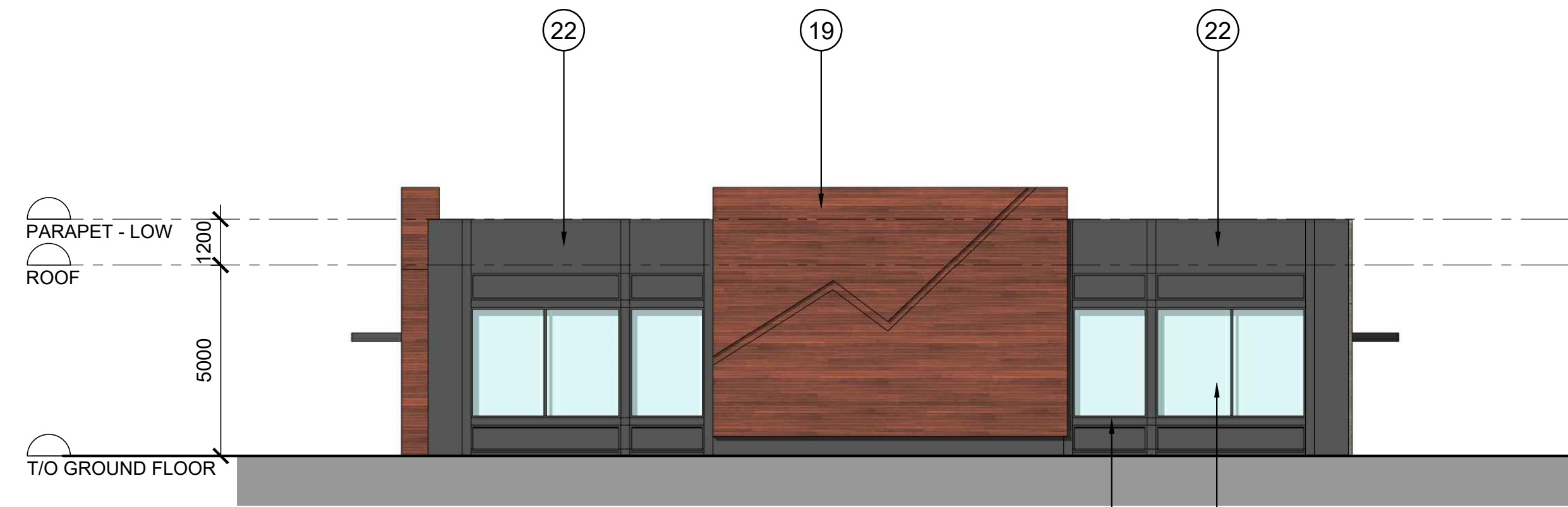
- (01) INDICATES DRAWING NOTES, LISTED ON EACH SHEET.
- (02) INDICATES ASSEMBLY TYPE; REFER TO TYPICAL ASSEMBLY SCHEDULE.
- (03) INDICATES WINDOW TYPE; REFER TO WINDOW ELEVATIONS AND DETAILS ON A800 SERIES.
- (000) INDICATES DOOR TYPE; REFER TO DOOR SCHEDULE AND DETAILS ON A900 SERIES.
- DETAIL NUMBER
- (A-01) TITLE
- SCALE
- DETAIL REFERENCE PAGE
- DETAIL CROSS REFERENCE PAGE



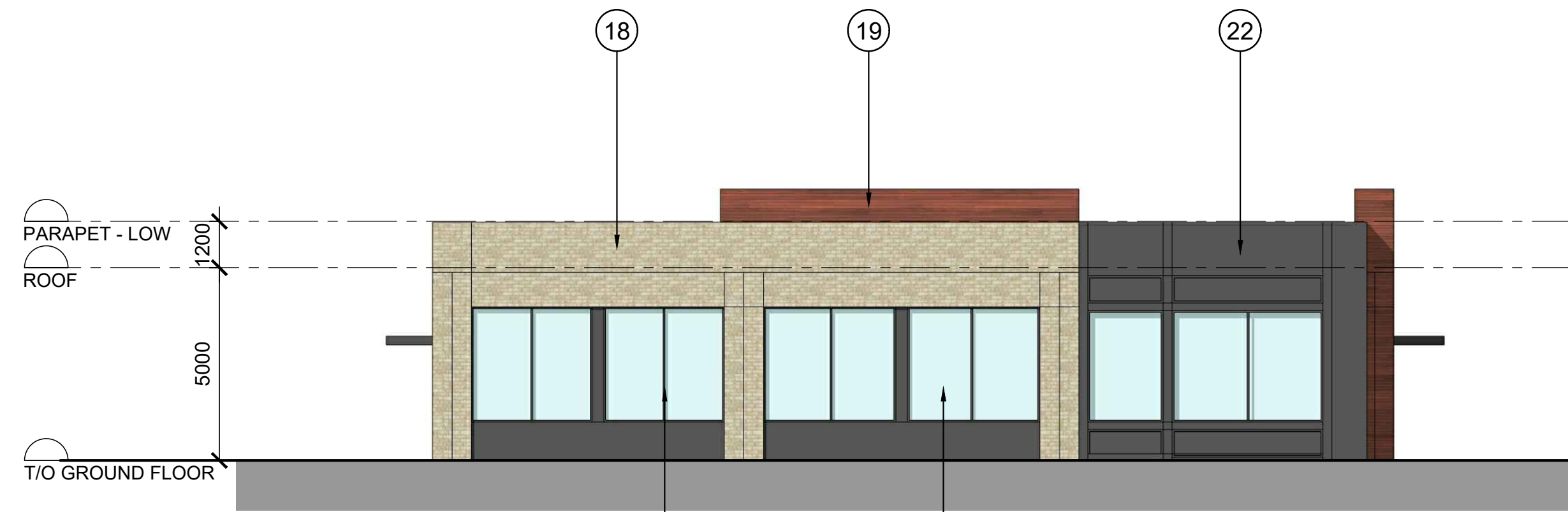
1 NORTH ELEVATION
 SCALE = 1:125
 A-01



2 SOUTH ELEVATION
 SCALE = 1:125
 A-01

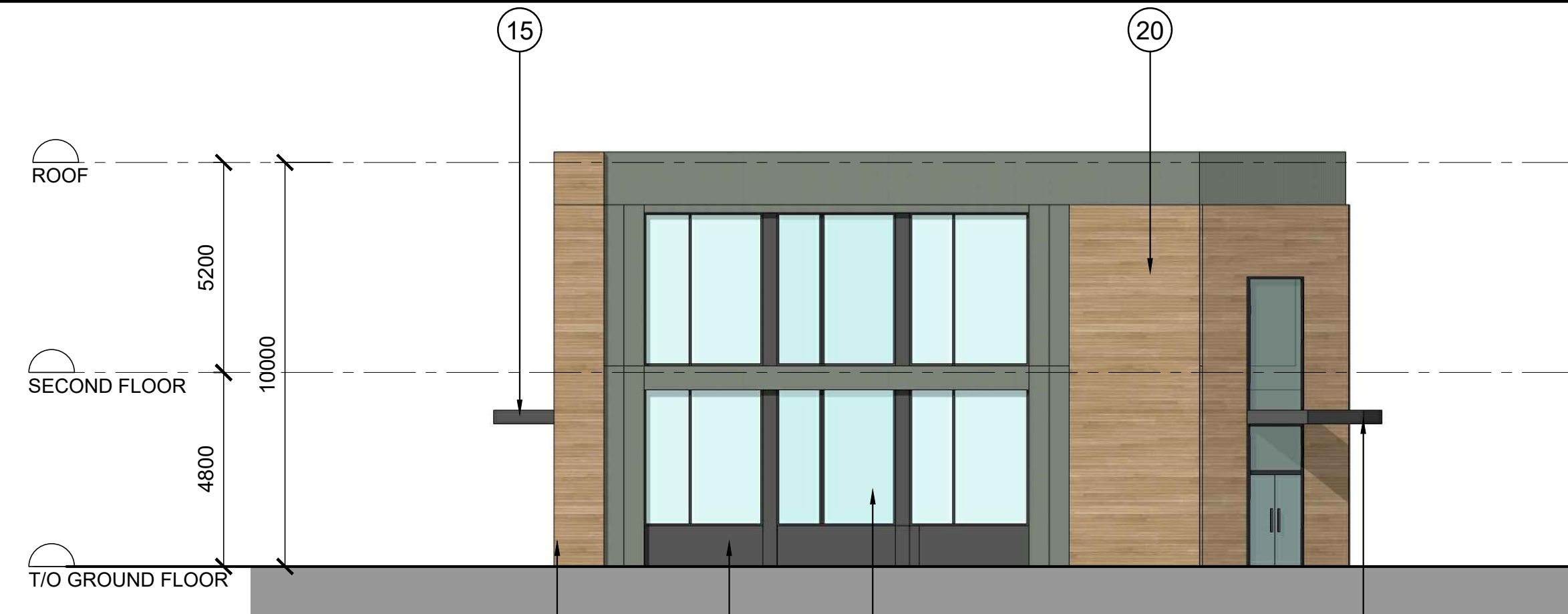


3 EAST ELEVATION
 SCALE = 1:125
 A-01

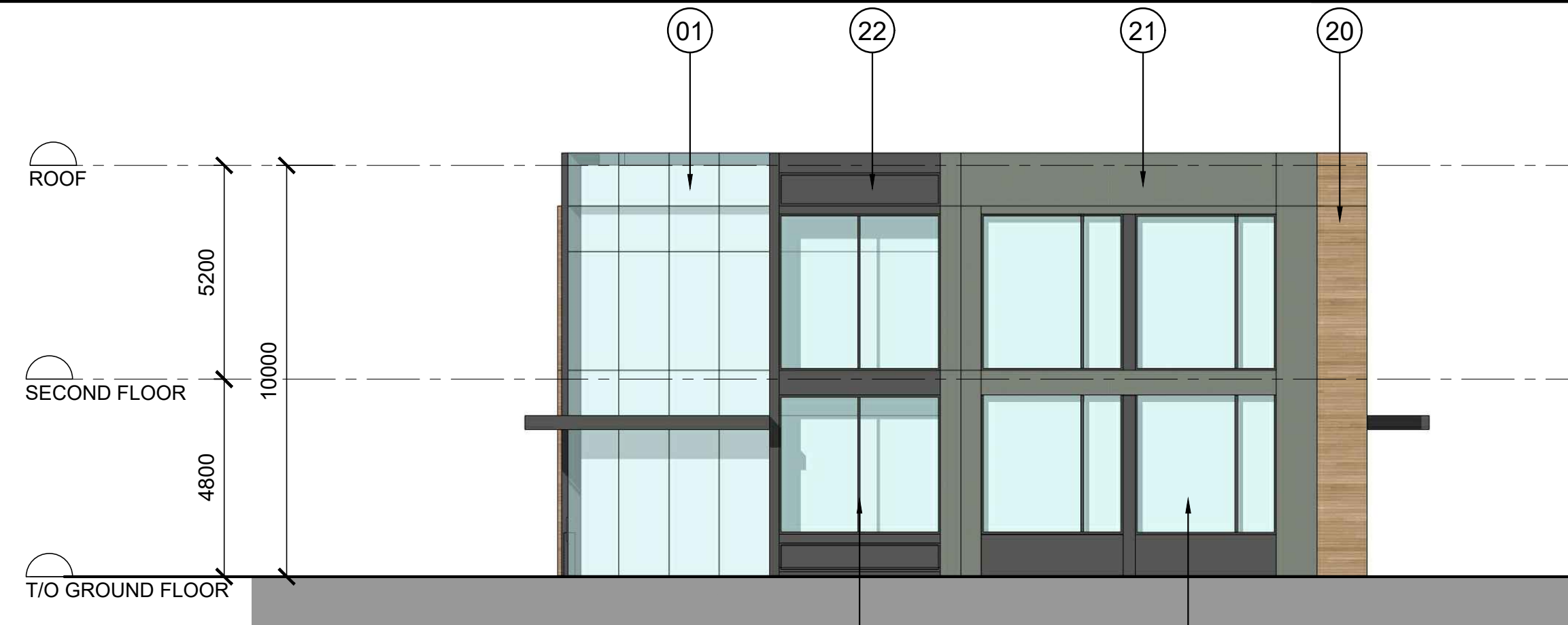


4 WEST ELEVATION
 SCALE = 1:125
 A-01

BUILDING "B"



5 NORTH ELEVATION
 SCALE = 1:125
 A-01



6 SOUTH ELEVATION
 SCALE = 1:125
 A-01



7 EAST ELEVATION
 SCALE = 1:125
 A-01



8 WEST ELEVATION
 SCALE = 1:125
 A-01

BUILDING "C"

EXTERIOR FINISH SCHEDULE

- 1 WINDOWS & DOORS - CLEAR VISION GLASS
- 2 FRAMES - CLEAR ANODIZED ALUMINUM
- 3 FRAMES - PREFINISHED ALUMINUM: COLOUR IRON ORE
- 4 ALUMINUM COMPOSITE PANELS, CLEAR ANODIZED ALUMINUM
- 5 ALUMINUM COMPOSITE PANELS, TOR RED
- 6 ALUMINUM COMPOSITE PANELS, SANDSTONE
- 7 EIFS: COLOUR GRANITSTONE
- 8 BRICK: MELVILLE SLIK BRICK BY PERMICON, COLOUR OCKLAND BLACK
- 9 ARCHITECTURAL BLOCK: BY RICHVALE YORK BLOCK, COLOUR DARK CHARCOAL
- 10 BRICK SILL: DIAMOND BLACK
- 11 PREFINISHED ALUMINUM PLATE PANELS: COLOUR SANDSTONE
- 12 PREFINISHED METAL SIDING, BY VICWEST: COLOUR STONE GREY
- 13 PREFINISHED METAL SIDING, BY VICWEST: COLOUR CHARCOAL
- 14 PREFINISHED METAL CAP FLASHING: COLOUR STONE GREY
- 15 PREFINISHED METAL CAP FLASHING: COLOUR CHARCOAL
- 16 PREFINISHED INSULATED METAL OVERHEAD DOORS: COLOUR WHITE
- 17 EXPOSED CONCRETE FOUNDATION WALL PARGED FINISH
- 18 BRICK: LIGHT BROWN
- 19 PREFINISHED METAL SIDING BY LONGBOARD: COLOUR DARK WALNUT
- 20 PREFINISHED METAL SIDING BY LONGBOARD: COLOUR LIGHT FIR
- 21 PREFINISHED METAL PANELS BY ALUCOBOND: COLOUR STEEL CITY SILVER MICA
- 22 PREFINISHED METAL PANELS BY ALUCOBOND: COLOUR GRAPHITE MICA
- 23 PREFINISHED INSULATED METAL OVERHEAD DOORS: COLOUR CHARCOAL

No.	DESCRIPTION	DATE
1	ISSUED FOR SPC ROUND #1 COMMENTS	Apr. 20, 21

REVISIONS:

ARCHITECT SEAL:

NORTH ARROW:

SEAL DATE: STAMP DATE

CLIENT:

metro

25 Vickers Rd Bldg A 2 Floor, Etobicoke Ont M9B 1C1
 Tel: 416-234-8118 Fax: 416-234-8927

ARCHITECT:

rla/architecture
 roderick lahey architect inc.
 56 beech street, ottawa, ontario K1S 3J6
 t. 613.724.9932 f. 613.724.1209 rlaarchitecture.ca

PROJECT TITLE:

METRO - BARRHAVEN
GREENBANK ROAD @
CAMBRIAN ROAD
 OTTAWA ONTARIO

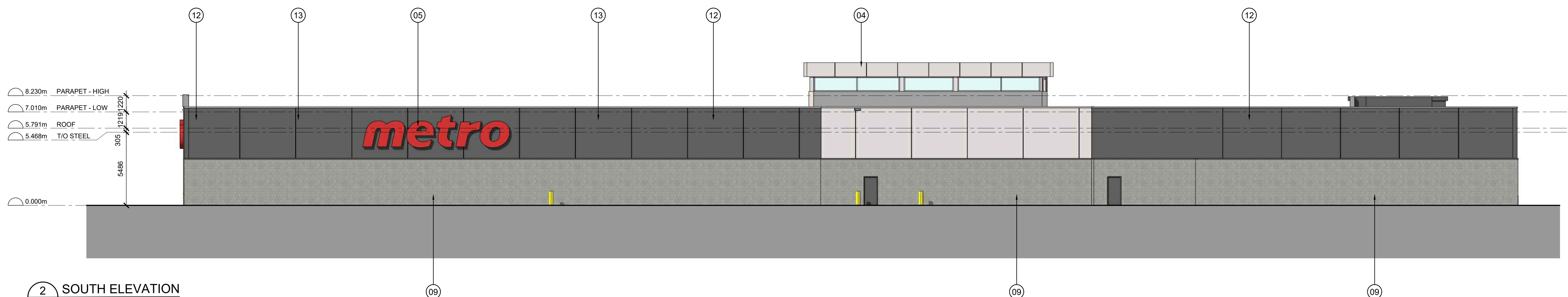
SHEET TITLE:

BUILDING "B - C"
ELEVATIONS

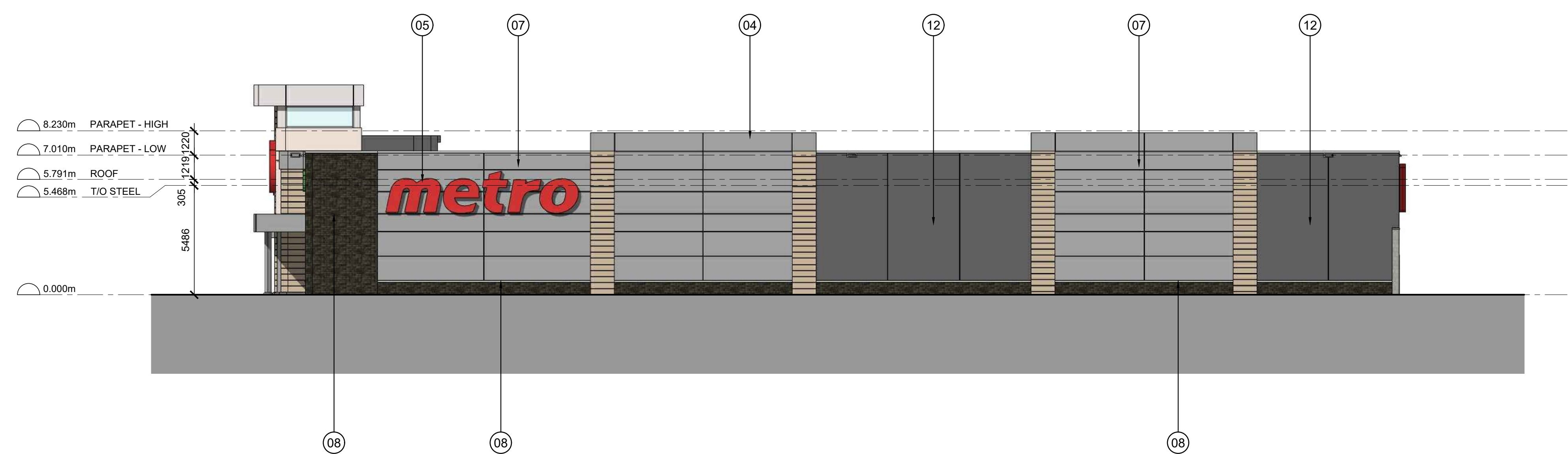
DRAWN: TZ	CHECKED: R.V.
SCALE: 1:125	SHEET No.:
PROJECT No.:	A-01
1949	



1 NORTH ELEVATION
SCALE = 1:150



2 SOUTH ELEVATION
SCALE = 1:125



2 EAST ELEVATION
SCALE = 1:150



4 WEST ELEVATION
SCALE = 1:125

EXTERIOR FINISH SCHEDULE

- 1 WINDOWS & DOORS - CLEAR VISION GLASS
- 2 FRAMES - CLEAR ANODIZED ALUMINUM
- 3 FRAMES - PREFINISHED ALUMINUM: COLOUR IRON ORE
- 4 ALUMINUM COMPOSITE PANELS, CLEAR ANODIZED ALUMINUM
- 5 ALUMINUM COMPOSITE PANELS, TOR RED
- 6 ALUMINUM COMPOSITE PANELS, SANDSTONE
- 7 EIFS: COLOUR GRANITSTONE
- 8 BRICK: MELVILLE SLIK BRICK BY PERMICON, COLOUR OCKLAND BLACK
- 9 ARCHITECTURAL BLOCK: BY RICHVALE YORK BLOCK, COLOUR DARK CHARCOAL
- 10 BRICK SILL: DIAMOND BLACK
- 11 PREFINISHED ALUMINUM PLATE PANELS: COLOUR SANDSTONE
- 12 PREFINISHED METAL SIDING, BY VICWEST: COLOUR STONE GREY
- 13 PREFINISHED METAL SIDING, BY VICWEST: COLOUR CHARCOAL
- 14 PREFINISHED METAL CAP FLASHING: COLOUR STONE GREY
- 15 PREFINISHED METAL CAP FLASHING: COLOUR CHARCOAL
- 16 PREFINISHED INSULATED METAL OVERHEAD DOORS: COLOUR WHITE
- 17 EXPOSED CONCRETE FOUNDATION WALL: PARGED FINISH
- 18 BRICK: LIGHT BROWN
- 19 PREFINISHED METAL SIDING BY LONGBOARD: COLOUR DARK WALNUT
- 20 PREFINISHED METAL SIDING BY LONGBOARD: COLOUR LIGHT FIR
- 21 PREFINISHED METAL PANELS BY ALUCOBOND: COLOUR STEEL CITY SILVER MICA
- 22 PREFINISHED METAL PANELS BY ALUCOBOND: COLOUR GRAPHITE MICA
- 23 PREFINISHED INSULATED METAL OVERHEAD DOORS: COLOUR CHARCOAL

IT IS THE RESPONSIBILITY OF THE APPROPRIATE CONTRACTOR TO CHECK AND VERIFY ALL DIMENSIONS ON SITE AND TO REPORT ALL ERRORS AND/OR OMISSIONS TO THE ARCHITECT.
ALL CONTRACTORS MUST COMPLY WITH ALL PERTINENT CODES AND BY-LAWS.
THIS DRAWING MAY NOT BE USED FOR CONSTRUCTION UNTIL SIGNED BY THE ARCHITECT.
DO NOT SCALE DRAWINGS.
COPYRIGHT RESERVED.

NOTATION SYMBOLS:

- (01) INDICATES DRAWING NOTES, LISTED ON EACH SHEET.
- (02) INDICATES ASSEMBLY TYPE: REFER TO TYPICAL ASSEMBLY SCHEDULE.
- (03) INDICATES WINDOW TYPE: REFER TO WINDOW ELEVATIONS AND DETAILS ON A300 SERIES.
- (000) INDICATES DOOR TYPE: REFER TO DOOR SCHEDULE AND DETAILS ON A300 SERIES.
- DETAIL NUMBER
- TITLE
- SCALE
- DETAIL REFERENCE PAGE
- DETAIL CROSS REFERENCE PAGE

ISSUED FOR SPC ROUND #1 COMMENTS		Apr. 20, 21
No.	DESCRIPTION	DATE

REVISIONS:

ARCHITECT SEAL:	NORTH ARROW:
SEAL DATE: STAMP DATE	
CLIENT:	

25 Vickers Rd Bldg A 2 Floor, Etobicoke Ont M9B 1C1
Tel: 416-234-8118 Fax: 416-234-8927

ARCHITECT:

roderick lahey architect inc.
56 beech street, ottawa, ontario K1S 3J6
t. 613.724.9932 f. 613.724.1209 rlaarchitecture.ca

PROJECT TITLE:

METRO - BARRHAVEN
GREENBANK ROAD @
CAMBRIAN ROAD
OTTAWA ONTARIO

SHEET TITLE:

BUILDING "A - B"
ELEVATIONS

DRAWN:	CHECKED:
TZ	R.V.
SCALE:	SHEET No.
1:150	
PROJECT No.:	
1949	

A-02

