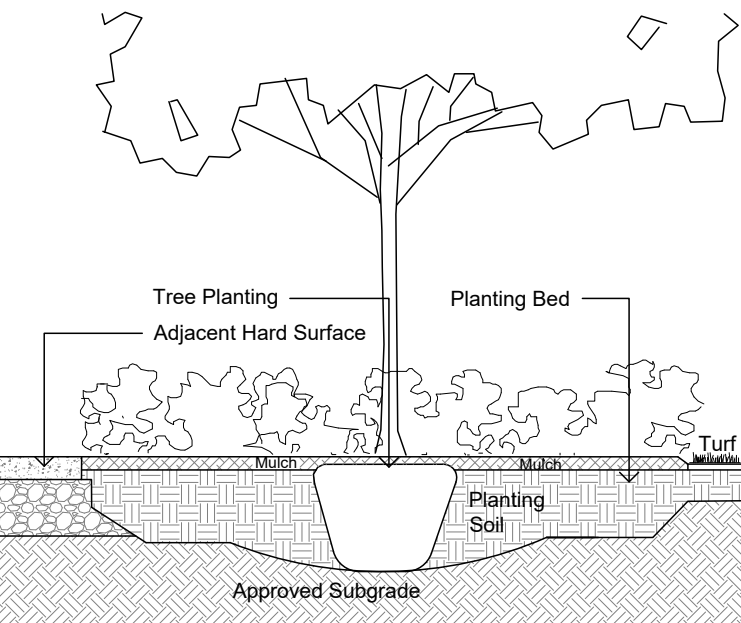


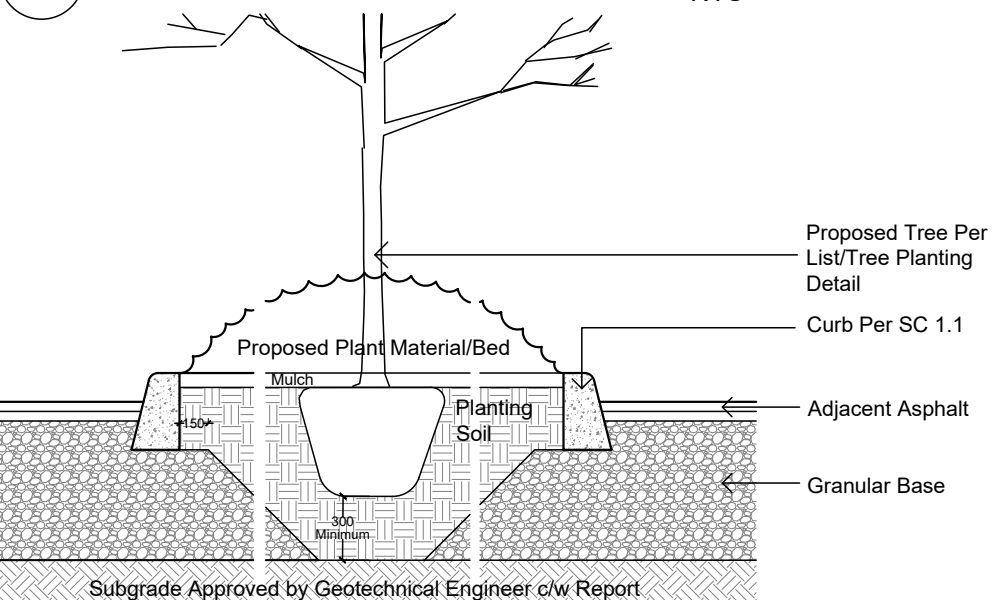
Circum Bicycle Rack
 P5-76-101-TP- Circum Bike Rack
 Depth: 2'(51 cm)
 Diameter: 24"(61.0 cm)
 Height: 37"(93.8 cm)
 Weight: 21.7 lb (9.9 kg)



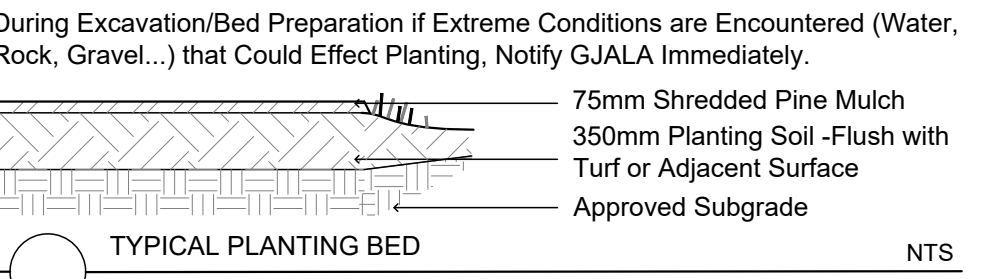
HAUSER SITE FURNITURE
 sales@hausersite.com
 800-258-7328
 hausersite.com



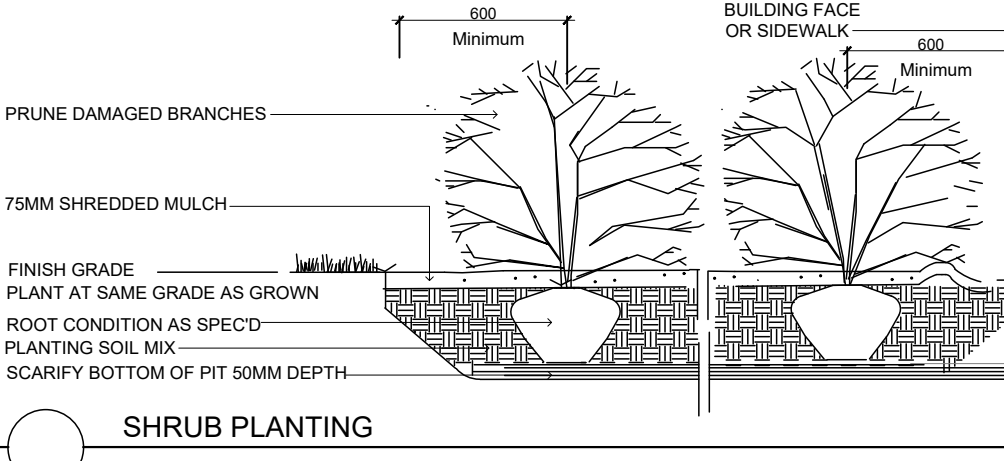
TREE PLANTING IN PLANTING BED NTS



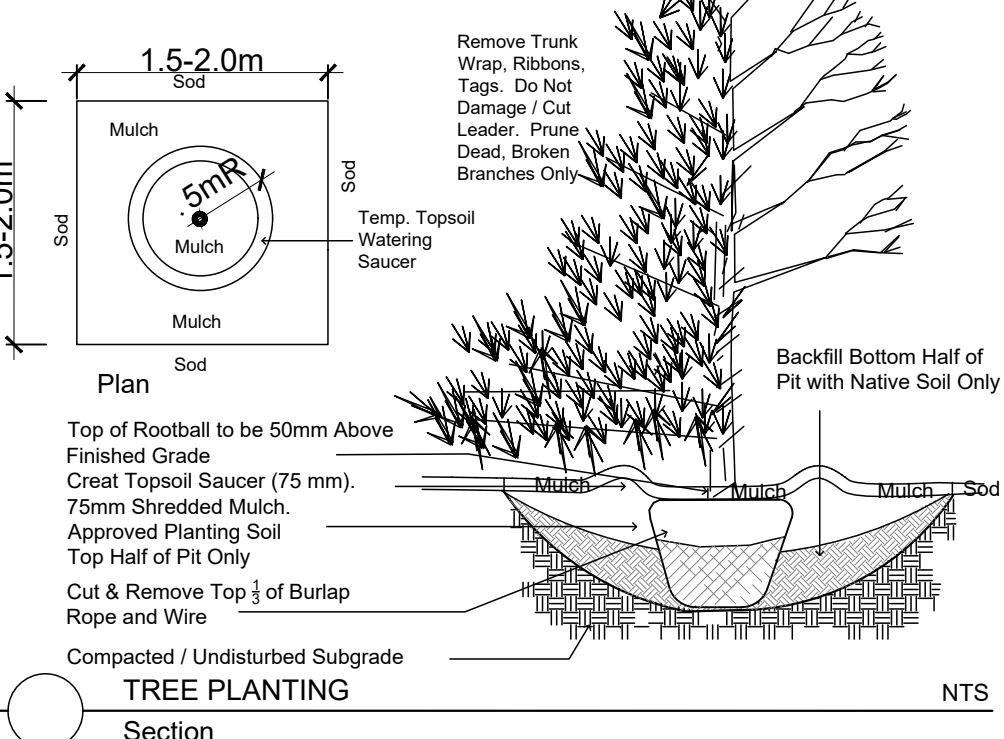
TYPICAL PLANTING IN ISLAND SECTION NTS



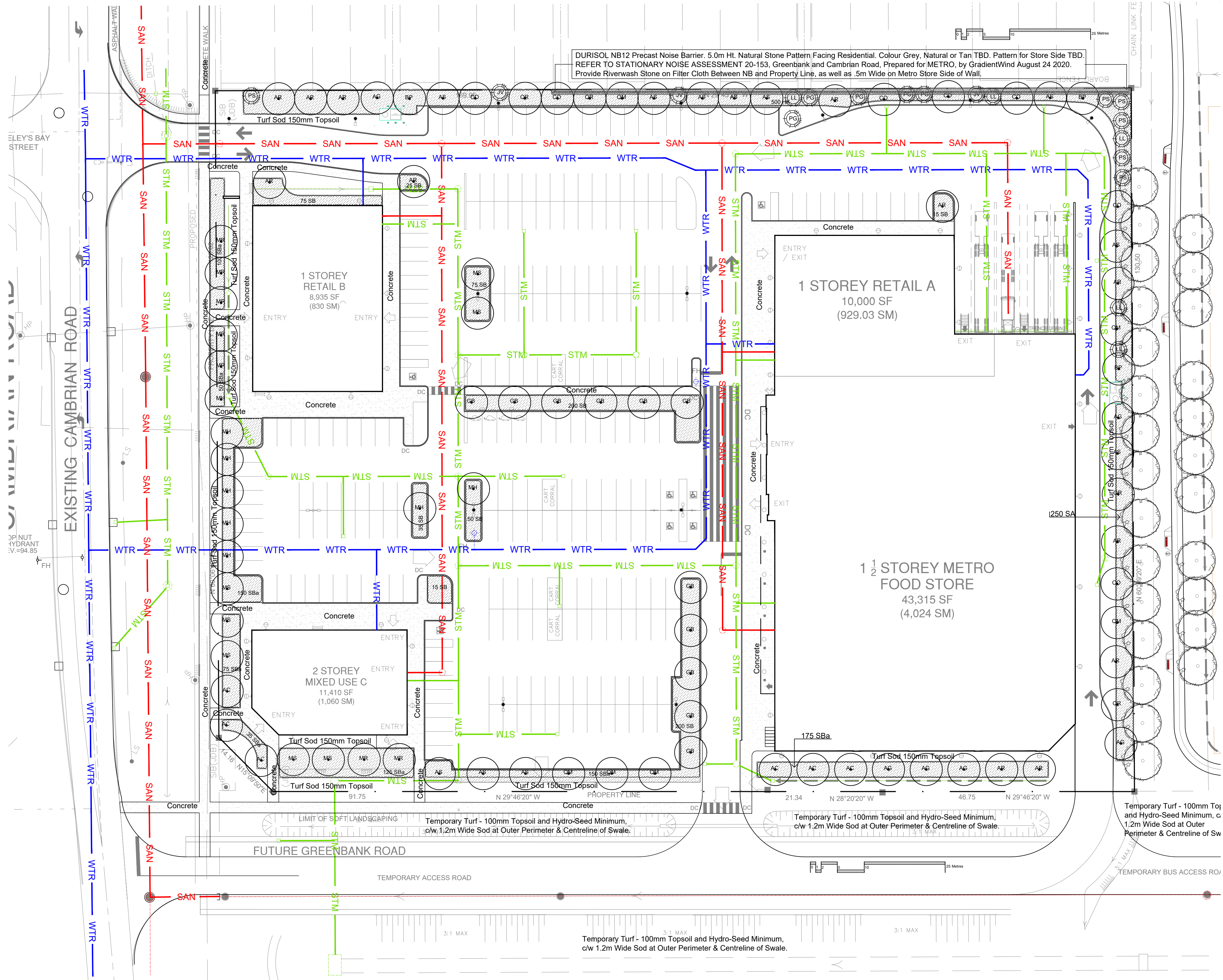
TYPICAL PLANTING BED NTS



SHRUB PLANTING NTS

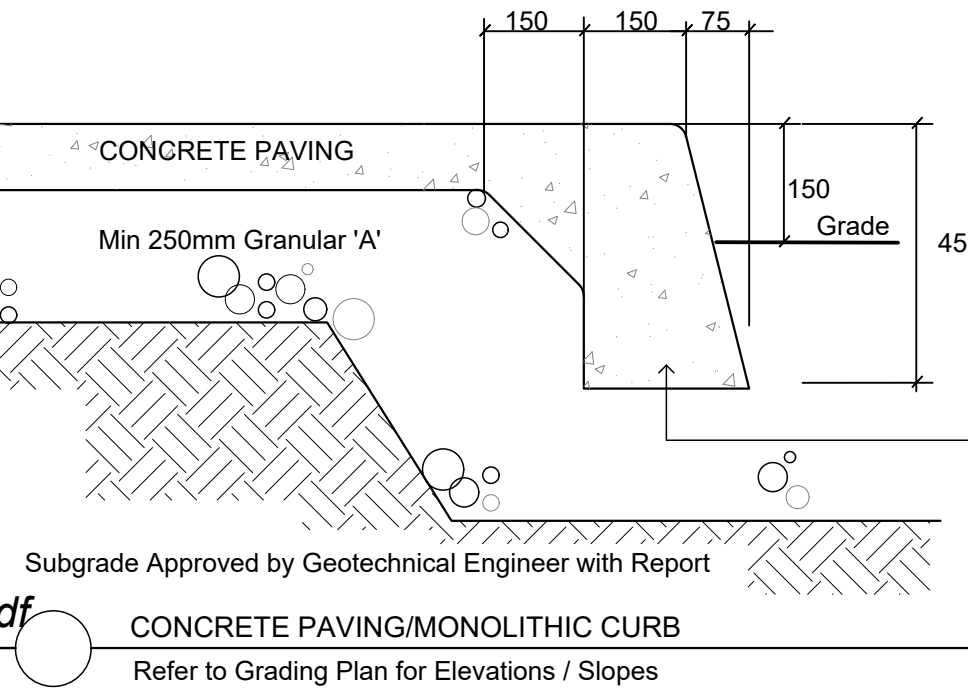
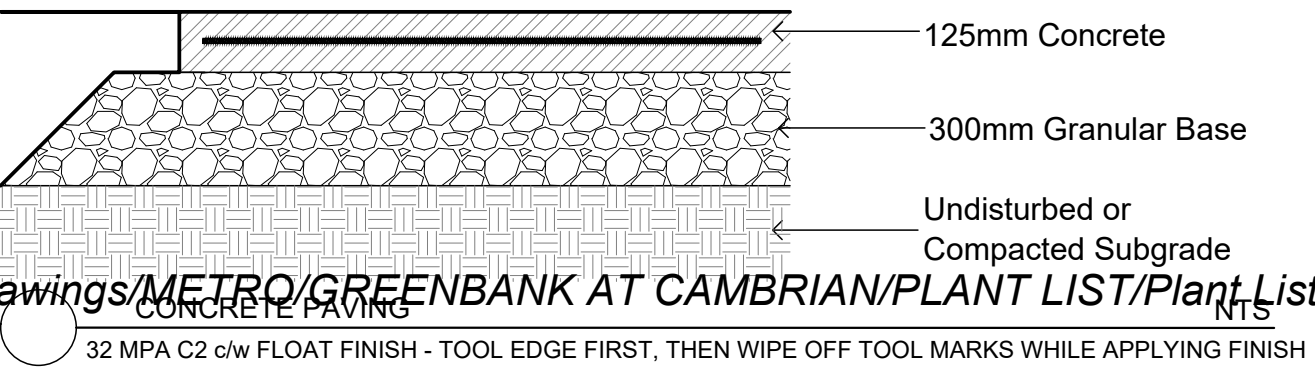


TREE PLANTING Section NTS



DURISOL NB12 Precast Noise Barrier. 5.0m Ht. Natural Stone Pattern Facing Residential. Colour Grey, Natural or Tan TBD. Pattern for Store Side TBD. REFER TO STATIONARY NOISE ASSESSMENT 20-153, Greenbank and Cambrian Road, Prepared for METRO, by GradientWind August 24 2020. Provide Riverwash Stone on Filter Cloth Between NB and Property Line, as well as .5m Wide on Metro Store Side of Wall.

GENERAL CONCRETE NOTES:
 ALL CONCRETE FINISHES TO BE APPROVED BY GJA LANDSCAPE ARCHITECT.
 SAWCUT LAYOUT FOR ALL AREAS TO BE MARKED ON SITE IN RED CHALK, REVIEWED, ADJUSTED AND APPROVED BY GJA LANDSCAPE ARCHITECT PRIOR TO ANY CONCRETE POURING.
 EXPANSION JOINT LAYOUT FOR ALL AREAS TO BE LAID OUT ON SITE, REVIEWED, ADJUSTED AND APPROVED BY GJA LANDSCAPE ARCHITECT PRIOR TO ANY CONCRETE POURING.
 FINISH: TOOL EDGE FIRST, THEN WIPE OFF TOOL MARKS WHILE APPLYING FINISH
 Concrete 125mm Thick, 32mpa, 6% Air Entrainment 6x6 Wire Mesh, Fibre Exp. Joints at all Hard Edges, 6m O.C. in Both Directions, Sawcut Control Joints (1" depth) 2.0m O.C. minimum



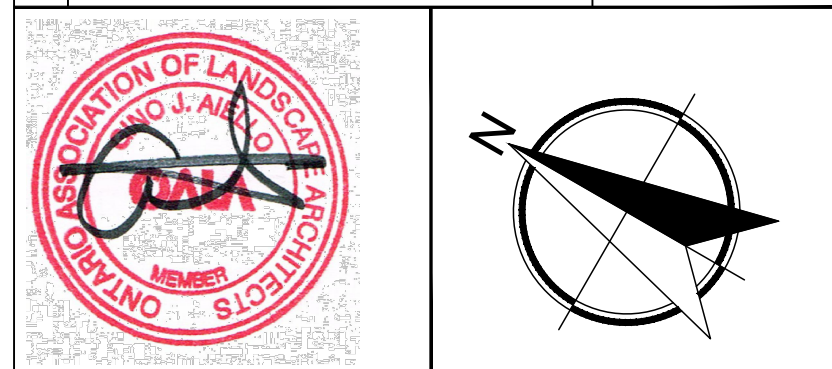
Tool Back Edge First. Apply Finish (Perpendicular to Curb if Broom). Finally Tool Curb Edge with 50mm Curb Tool
 Sawcut per Plan / per Site Conditions/2M o.c. approx.
 Back Edge of Sidewalk
 Face of Curb
 Typical Curb per City of Ottawa. SC 2/OPSD.600.110
 PLAN
 NO Dummy Joints!! No Visible Tool Edges Except for Curb Edge
 Refer to Grading Plan for Elevations / Slopes

Drawing Remains the Property of/Copyright Reserved by Gino J. Aiello Landscape Architect. Do Not Use or Reproduce Without Approval of Gino J. Aiello.
NOT To Be Used For Construction Unless indicated by Revision: "FOR LANDSCAPE CONSTRUCTION".
Contractor is Responsible for Verification of Site Locations of all Utilities. Report any Discrepancies Between Site and Drawing Immediately to Gino J. Aiello. Do NOT Proceed Until Clarified.
 TURF AREAS TO BE SOD C/W 150MM DEPTH TOPSOIL ON APPROVED SUBGRADE | SOD TO BE #1 GRADE TURFGRASS NURSERY SOD per NSGA - Fine Fescue/Kentucky Bluegrass Sod | PLANTING MIX TO BE APPROVED BY LANDSCAPE ARCHITECT | PLANT MATERIAL TO MEET CNLA STANDARDS/BE APPROVED BY LANDSCAPE ARCHITECT PRIOR TO PLANTING | ALL MATERIALS & WORK TO BE MAINTAINED UNTIL FINAL ACCEPTANCE. (MOWING TURF, WEEDING BEDS, WATERING TURF & PLANTS) & INCLUDE 1 YEAR WARRANTY FROM DATE OF FINAL ACCEPTANCE | PROVIDE WATERING OF ALL PLANT MATERIAL AS REQUIRED FOR PROPER ESTABLISHMENT, UNTIL END OF WARRANTY PERIOD | REFER TO CIVIL ENGINEER'S DRAWING FOR ELEVATIONS / GRADING |
 The Landscape Plan is to be read in conjunction with the grading, servicing, site and survey plan | Bare root material to be planted in season only | All plant material locations to be staked on site by the landscape contractor and checked by the landscape architect prior to planting | All trees to be preserved on or directly adjacent to the site will be protected | Plant material are to be installed a minimum of, 3.0m away from any part of any hydro transformer, 3.0m corridor between a fire hydrant and the curb, a 2.5m radius beside or behind a fire hydrant, 2.0m from any servicing/utility line or structure |

LANDSCAPE PLAN LEGEND

- Proposed Coniferous Tree
 - Proposed Deciduous Tree
 - Proposed Planting Bed
 - PS-76-101-TP- Circum Bike Rack by HAUSER Anchor to Concrete
- REFER TO CIVIL BY DSEL
- WTR Water Service
 - STM Storm Service
 - SAN Sanitary Service

No.	Revision	Date
8	Temp. Access Road Updated	JANUARY 14 2022
7	NOISE BARRIER SPECIFIED	SEPTEMBER 1 2021
6	SITE PLAN CONTROL SUBMISSION 4	JUNE 30 2021
5	SITE PLAN CONTROL SUBMISSION 3	MAY 31 2021
4	SITE PLAN CONTROL SUBMISSION 2	APRIL 19 2021
3	SITE PLAN CONTROL SUBMISSION 1	AUGUST 27 2020
2	REVIEW/COORDINATION	AUGUST 6 2020
1	COORDINATION	JULY 2020



Property Owner
METRO
 25 Vickers Rd Bldg A 2 Floor, Etobicoke Ont M9B 1C1
 416-234-6118

Gino J. Aiello landscape architect
 www.GJALA.com
 Gino@GJALA.com (613) 852 1343
 110 Didsbury Road Unit # 9 | Ottawa Ontario | K2T 0C2

Project **1.5 Storey Metro Food Store & Retail Development**
 GREENBANK AT CAMBRIAN ROADS NEPEAN
 Drawing **Landscape Plan**
 Date: JULY 2020
 Scale: 1:400
 City of Ottawa
 Dwg - #####
 Sheet Number **L1**
 D07-12-20-0102

Missing or invalid reference
 File: /Volumes/GoogleDrive/My Drive/GJALA/PROJECTS/a-drawings/METRO/GREENBANK AT CAMBRIAN/PLANT LIST/Plant List5.pdf
 Sheet: 1