

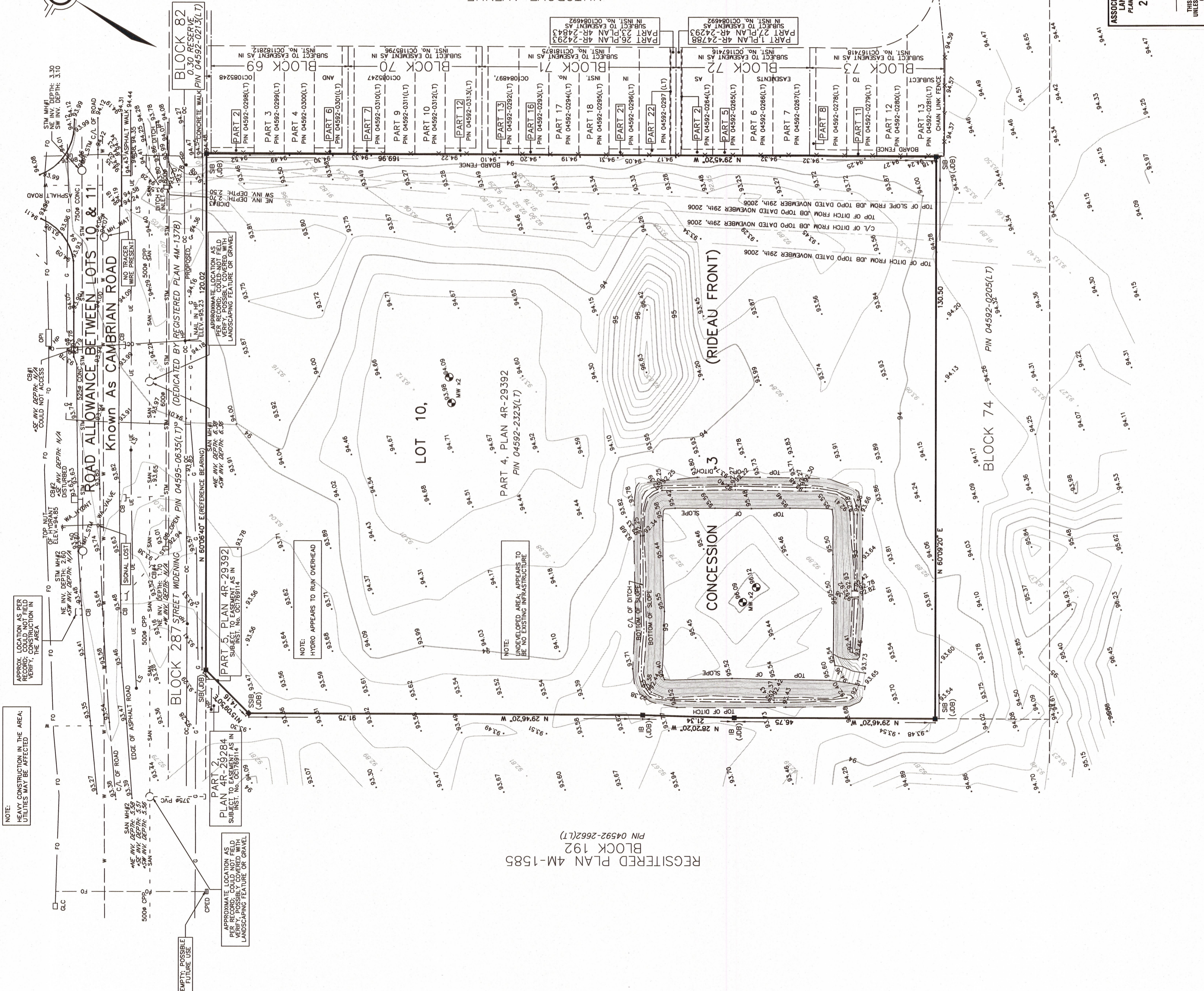
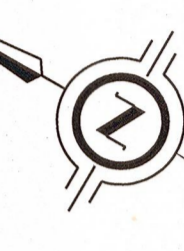
PLAN OF SURVEY SHOWING
TOPOGRAPHIC DETAIL OF

**PART OF LOT 10
CONCESSION 3 (RIDEAU FRONT)
CITY OF OTTAWA**

SCALE 1 : 500
0 10 20 30 metres

J.D. BARNES LIMITED
© COPYRIGHT 2019

METRIC DISTANCES AND/OR COORDINATES SHOWN ON THIS PLAN ARE IN METRES AND CAN BE CONVERTED TO FEET BY DIVIDING BY 0.3048.



SEWER INVERT NOTE:

ANNOTATIONS DISPLAYED AS *ITALICIZED* WITH AN ASTERISK* HAVE BEEN LOCATED BY FIELD SURVEY.

UNDERGROUND UTILITY NOTES

THE UTILITY DATA DERIVED ON THIS DRAWING WERE ACQUIRED IN ACCORDANCE WITH ASCE STANDARD 38-02. THE INFORMATION IS SHOWN BY ATTRIBUTED QUALITY LEVELS WHICH ARE DEFINED AS FOLLOWS:

DATA QUALITY LEVEL

- HIGHEST QUALITY
- QUALITY LEVEL A
- QUALITY LEVEL B
- QUALITY LEVEL C
- LOWEST QUALITY

QUALITY LEVEL "A" - INFORMATION OBTAINED BY ACTUAL PHYSICAL EXPOSURE OF UTILITY LINES, SURVEYED IN ACCORDANCE WITH ASCE STANDARD 38-02. PRECISE HORIZONTAL AND VERTICAL POSITION, AND APPROXIMATE HORIZONTAL POSITION OF THE DESIGNATED UTILITIES.

QUALITY LEVEL "B" - INFORMATION OBTAINED USING GEOPHYSICAL LOCATE TECHNIQUES TO IDENTIFY THE EXISTENCE AND APPROXIMATE HORIZONTAL POSITION OF THE DESIGNATED UTILITIES.

QUALITY LEVEL "C" - INFORMATION OBTAINED BY SURVEYING AND PLOTTING VISIBLE UTILITY FEATURES AND BY USING PROFESSIONAL JUDGMENT IN CORRELATING THIS INFORMATION TO THE QUALITY "B" INFORMATION OBTAINED.

QUALITY LEVEL "D" - INFORMATION DERIVED FROM UTILITY RECORDS OR VERBAL RECOLLECTIONS.

ALL SERVICES ARE QUALITY "D" UNLESS NOTED OTHERWISE.

LEVEL "D" RECORD INFORMATION SHOWN ON THIS PLAN HAVE BEEN PLOTTED FROM APPROXIMATE LEVELS FROM RECORDS FOUND AND COULD NOT BE FIELD VERIFIED. IT IS SUGGESTED THAT LEVEL "A" METHODOLOGIES BE EMPLOYED.

QUALITY LEVEL "D" INFORMATION COMPILED FROM RECORDS PROVIDED BY BELL CANADA MUNICIPAL OPERATIONS CENTRE MARK UP 80547; ENBRIDGE GAS DISTRIBUTION INC. EGD FILE NO. 2321808; CITY OF OTTAWA, DWG NO. 14942 SHEET NO. 22, DWG NO. 17586 SHEET NO. 26, AND "CC-B-2.PDF".

CAUTION: CALL BEFORE YOU DIG

THIS PLAN IS INTENDED FOR DESIGN PURPOSES ONLY. OTHER BURIED UTILITIES MAY EXIST WHICH ARE NOT SHOWN DUE TO INSUFFICIENT INFORMATION OR IMPROPER RECORDING OF BREAKING GROUND OWNERS OF UNDERGROUND UTILITIES PRIOR TO CONSTRUCTION OF THE PROJECT. IT IS THE RESPONSIBILITY OF THE CONTRACTOR/BUILDER TO ENSURE THE APPROPRIATE LEGAL REQUIREMENTS ARE MET.

ELEVATIONS

1. ELEVATIONS SHOWN ON THIS PLAN ARE RELATED TO GEODETIC DATUM AND ARE DERIVED FROM MINISTRY OF TRANSPORTATION CONTROL MONUMENT 0682001026 HAVING A PUBLISHED ELEVATION OF 96.923 METRES.
2. IT IS THE RESPONSIBILITY OF THE USER OF THIS INFORMATION TO VERIFY THAT THE SITE BENCHMARK HAS NOT BEEN ALTERED OR DISTURBED AND THAT ITS RELATIVE ELEVATION AND DESCRIPTION AGREES WITH THE INFORMATION SHOWN ON THIS DRAWING.

LEGEND

- SURVEY MONUMENT FOUND
 - SURVEY MONUMENT SET
 - STANDARD IRON BAR
 - SHORT STANDARD IRON BAR
 - IRON BAR
 - J.D. BARNES LIMITED
 - DENOTES CATCHBASIN
 - DENOTES SANITARY MANHOLE
 - DENOTES WATER MANHOLE
 - DENOTES HYDRO POLE/IRON BAR
 - DENOTES LIGHT STANDARD
 - DENOTES WASTE TANK
 - DENOTES UNDERGROUND GAS LINE
 - DENOTES OVERHEAD CABLE
 - DENOTES UNDERGROUND SANITARY SEWER
 - DENOTES UNDERGROUND STORM SEWER
 - DENOTES UNDERGROUND WATER LINE
 - DENOTES UNDERGROUND HYDRO LINE
 - DENOTES OUTSIDE PLANT INTERFACE
 - DENOTES CABLE/PEDESTAL INTERFACE
 - DENOTES CONDUIT/PIPE/WELL CHAMBER
 - DENOTES CONDUIT/PIPE/WELL
 - DENOTES CONCRETE
 - DENOTES PRESSURE PIPE
 - DENOTES EXISTING ELEVATION
 - DENOTES ELEVATIONS FROM PREVIOUS JOB TOPOGRAPHIC SURVEY, DATED NOVEMBER 29th, 2006
- CONTOUR INTERVALS ARE SHOWN AS 1m FOR MAJOR AND 0.25m FOR MINOR
- DENOTES MINOR CONTOUR

NOTES

BEARINGS ARE MTM GRID, DERIVED FROM THE REFERENCE BEARING, KNOWN AS THE SOUTHERLY LIMIT OF BLOCK 287, REGISTERED PLAN 4M-1378, HAVING A BEARING OF N 60°06'40" E.

DISTANCES ARE GROUND AND CAN BE CONVERTED TO GRID BY MULTIPLYING BY THE COMBINED SCALE FACTOR OF 0.9999989.

SURVEYOR'S CERTIFICATE

1. THIS SURVEY AND PLAN ARE CORRECT AND IN ACCORDANCE WITH THE SURVEYS ACT, THE SURVEYORS ACT AND THE REGULATIONS MADE UNDER THEM.
2. THE SURVEY WAS COMPLETED ON OCTOBER 11, 2019.

NOVEMBER 11, 2019
DATE

CLM.FOV
ONTARIO LAND SURVEYOR

SUBSURFACE UTILITY FIELD WORK WAS COMPLETED ON THE 6TH DAY OF NOVEMBER, 2019



REGISTRATION NO. 19-106-00
DATE 11/2019

NS
SL

CHECKED BY:

DRAWN BY:

REFERENCE NO.:

DATE:

FILE: G:\19-106-00\Drawings\19-10-106-00_Plan of Survey.dgn

ASSOCIATION OF ONTARIO LAND SURVEYORS
PLAN SUBMISSION FORM
2109715

THIS PLAN IS NOT VALID UNLESS IT IS ACCOMPANIED BY THE ORIGINAL COPY ISSUED BY THE SURVEYOR OR HIS SUCCESSOR.
Regulation 1026, Section 29(3).

J.D. BARNES SURVEYING LIMITED GIS
LAND INFORMATION SPECIALISTS
240 DON REDD DRIVE, SUITE 204 OTTAWA, ON K1H 1E1
T: (613) 731-7244 F: (613) 731-8955 www.jdbarnes.com

REGISTERED PLAN 4M-1585 BLOCK 192 PIN 04592-2662(LT)
REGISTERED PLAN 4M-1399 BLOCK 82 PIN 04592-0213(LT)
REGISTERED PLAN 4M-1399 BLOCK 69
REGISTERED PLAN 4M-1399 BLOCK 70
REGISTERED PLAN 4M-1399 BLOCK 71
REGISTERED PLAN 4M-1399 BLOCK 72
REGISTERED PLAN 4M-1399 BLOCK 73
REGISTERED PLAN 4M-1399 BLOCK 74
REGISTERED PLAN 4M-1399 BLOCK 75
REGISTERED PLAN 4M-1399 BLOCK 76
REGISTERED PLAN 4M-1399 BLOCK 77
REGISTERED PLAN 4M-1399 BLOCK 78
REGISTERED PLAN 4M-1399 BLOCK 79
REGISTERED PLAN 4M-1399 BLOCK 80
REGISTERED PLAN 4M-1399 BLOCK 81
REGISTERED PLAN 4M-1399 BLOCK 82