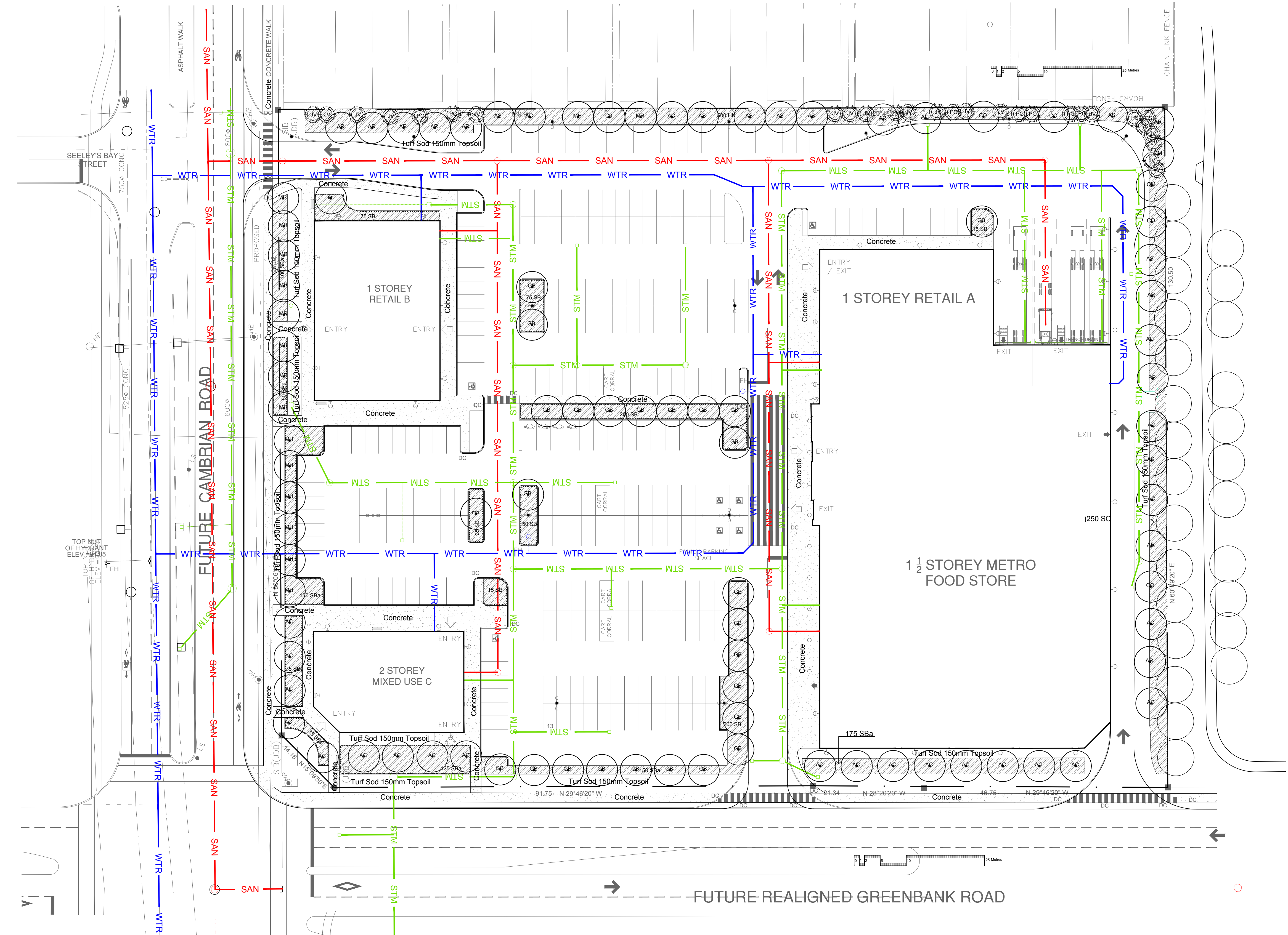
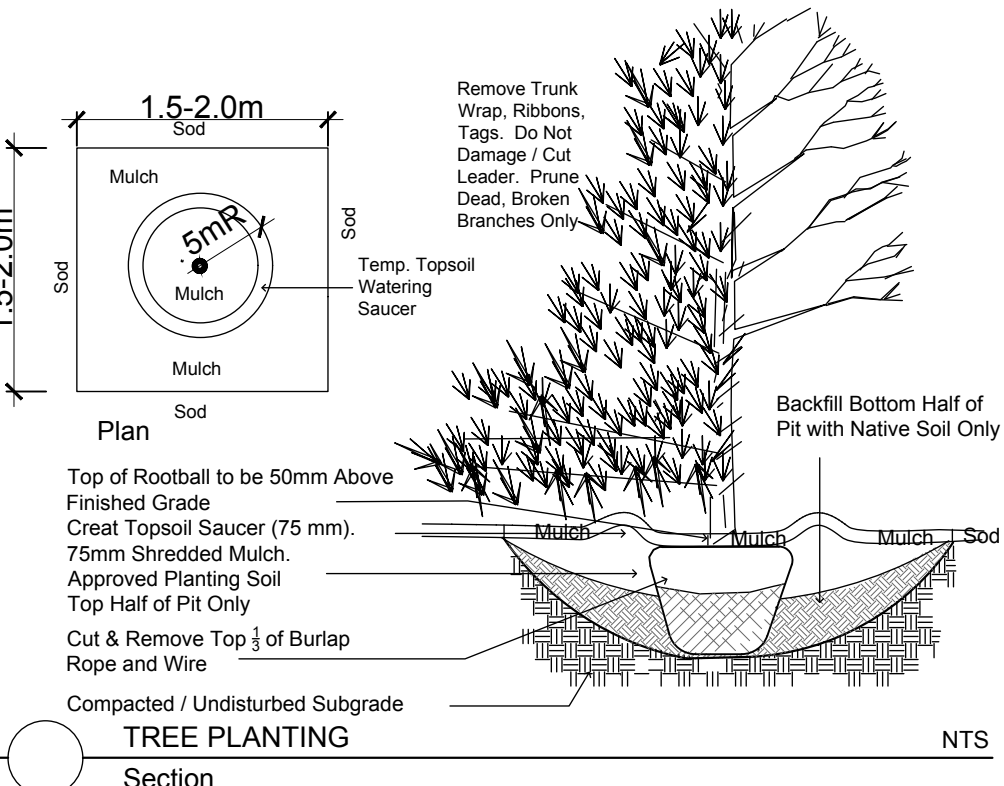
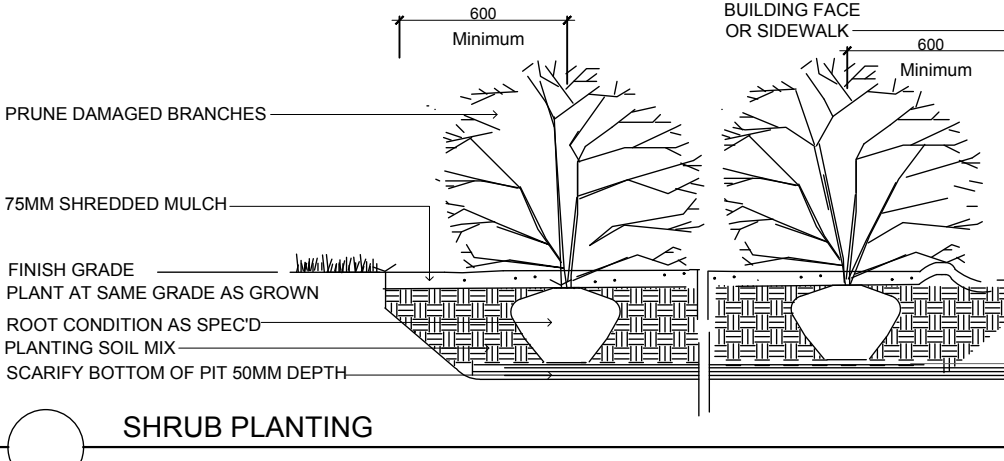
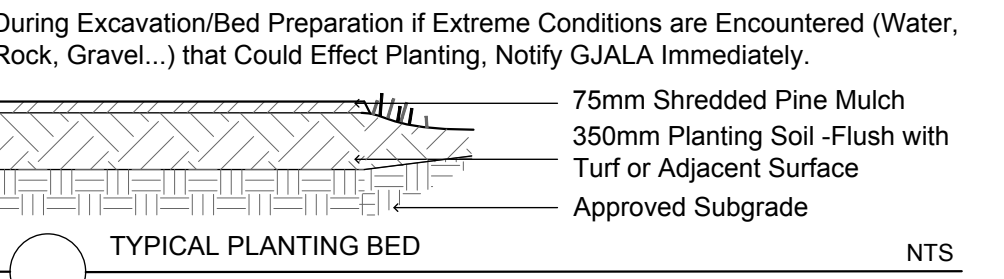
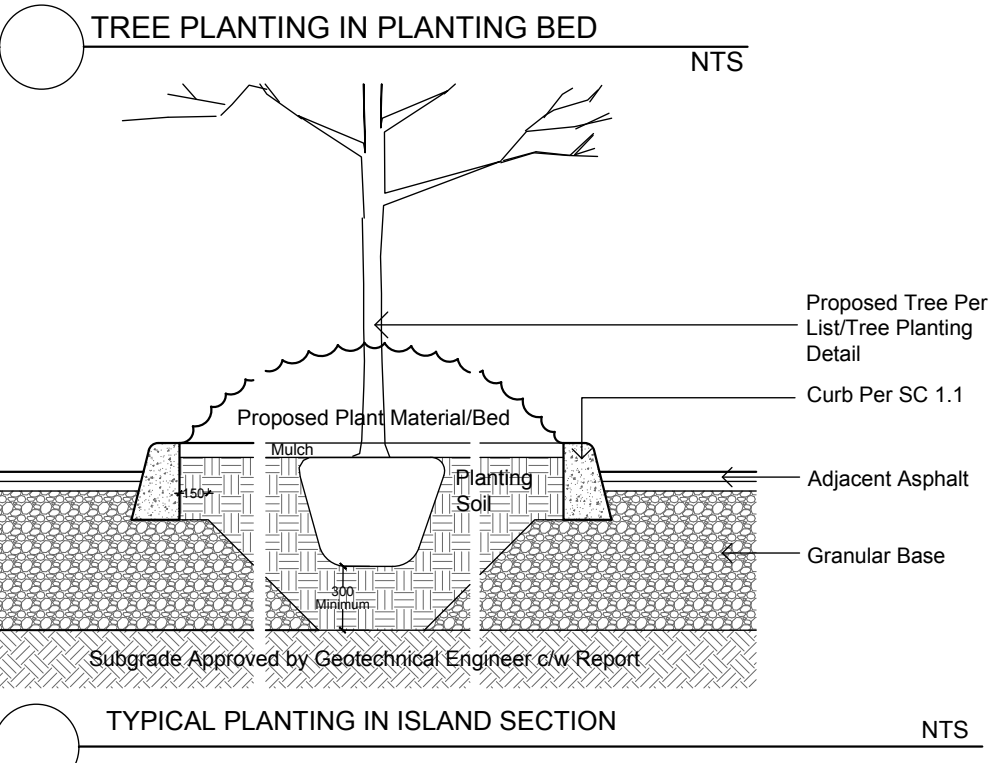
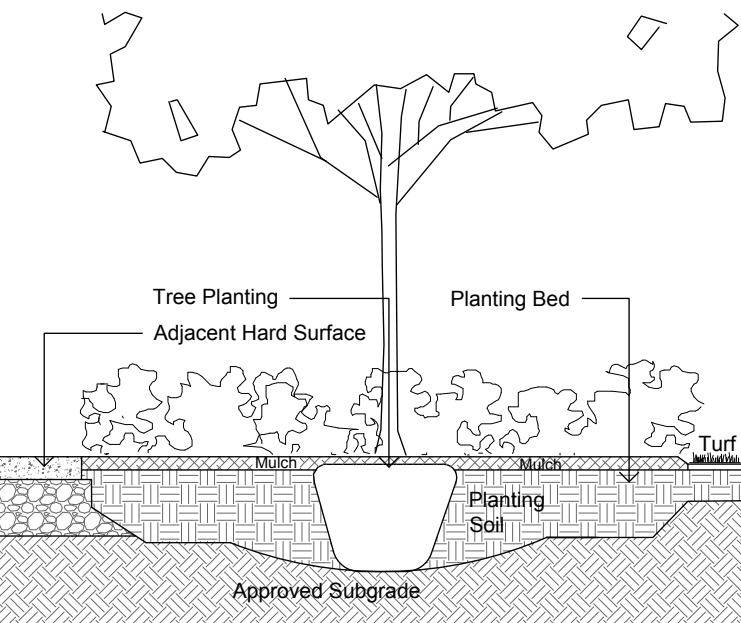


**Circum Bicycle Rack**  
 PS-76-101-TP- Circum Bike Rack  
 Depth: 2' (51 cm)  
 Diameter: 24" (61.0 cm)  
 Height: 37" (93.8 cm)  
 Weight: 21.7 (9.5 kg)



**HAUSER SITE FURNITURE**  
 sales@hausersite.com  
 800-258-7328  
 hausersite.com

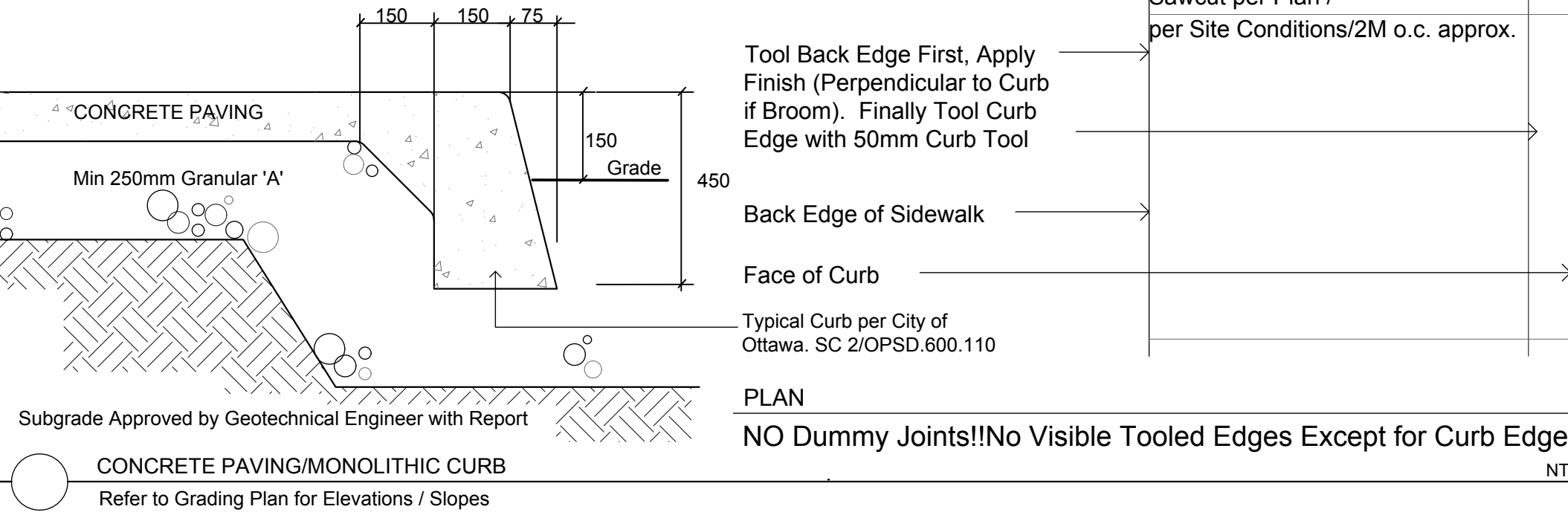
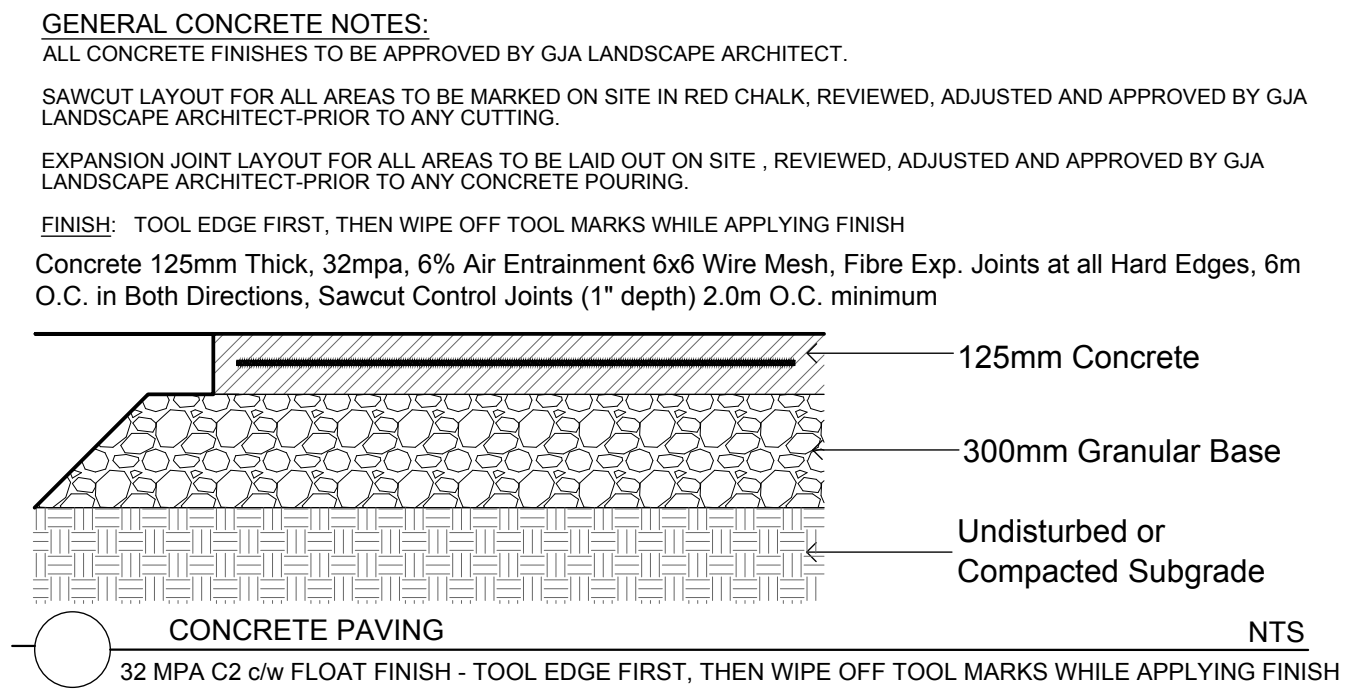


**CALIPER B AND B TREES - METRO CAMBRIAN AND FUTURE GREENBANK ROADS**

Code	Qty.	Botanical Name	Common Name	Size	Condition
AC	25	Ametanchier canadensis	Tree Serviceberry	60mm cal	B = B specimen
AG	1	Aesculus glabra	Ohio Buckeye	60mm cal	B = B specimen
AR	11	Acer rubrum	Red Maple	70mm cal	B = B specimen
AS	8	Acer saccharum	Sugar Maple	70mm cal	B = B specimen
BP	1	Betula papyrifera	Paper Birch	60mm cal	B = B specimen
CO	6	Celtis occidentalis	Common Hackberry	60mm cal	B = B specimen
GB	25	Goniglo biloba	Madagascar Tree	70mm cal	B = B specimen
MH	8	Malus 'Harvest Gold'	Harvest Gold Crabapple	60mm cal	B = B specimen
MR	9	Malus 'Royal Raindrops'	Royal Raindrops Crabapple	60mm cal	B = B specimen
MS	1	Malus 'Red Splendor'	Red Splendor Crabapple	60mm cal	B = B specimen
QM	2	Quercus macrocarpa	Burr Oak	70mm cal	B = B specimen
JV	37	Juniperus virginiana	Eastern Red Cedar	1.5m Ht.	B = B specimen
LL	1	Larix laricina	Eastern Larch / Tamarack	1.75m Ht.	B = B specimen
PG	7	Picea glauca	White Spruce	2.0m Ht.	B = B specimen
PS	3	Pinus strobus	White Pine	1.5m Ht.	B = B specimen

**POTTED SHRUBS - METRO CAMBRIAN AND FUTURE GREENBANK ROADS**

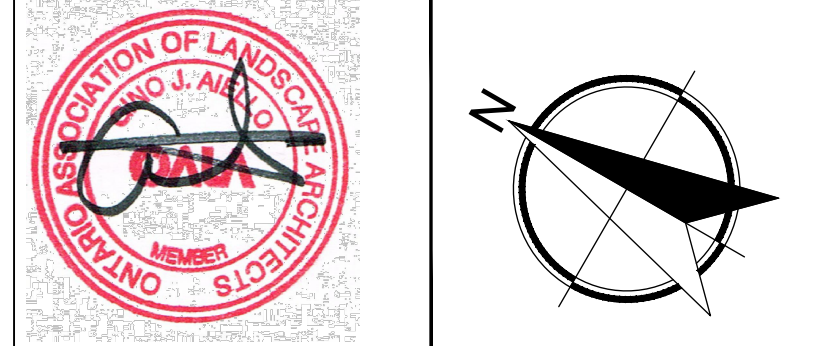
Code	Qty.	Botanical Name	Common Name	Size	Condition
HW	500	Hypericum kalimianum	St. John's Wort	30cm Ht.	Pot
SA	250	Symphoricarpos albus	Snowberry	60cm Ht.	Pot
SB	690	Spiraea bumalda 'Dart's Red'	Dart's Red Spirea	40cm Ht.	Pot
Sba	860	Spiraea bumalda 'Anthony Waterer'	Anthony Waterer Spirea	50cm Ht.	Pot



Drawing Remains the Property of/Copyright Reserved by Gino J. Aiello Landscape Architect. Do Not Use or Reproduce Without Approval of Gino J. Aiello.  
**NOT To Be Used For Construction Unless** indicated by Revision: **"FOR LANDSCAPE CONSTRUCTION"**.  
**Contractor is Responsible** for Verification of Site Locations of all Utilities. Report any Discrepancies Between Site and Drawing Immediately to Gino J. Aiello. Do NOT Proceed Until Clarified.  
 TURF AREAS TO BE SOD C/W 150MM DEPTH TOPSOIL ON APPROVED SUBGRADE | SOD TO BE #1 GRADE TURFGRASS NURSERY SOD per NSGA - Fine Fescue/Kentucky Bluegrass Sod | PLANTING MIX TO BE APPROVED BY LANDSCAPE ARCHITECT | PLANT MATERIAL TO MEET CNLA STANDARDS/BE APPROVED BY LANDSCAPE ARCHITECT PRIOR TO PLANTING | ALL MATERIALS & WORK TO BE MAINTAINED UNTIL FINAL ACCEPTANCE. (MOWING TURF, WEEDING BEDS, WATERING TURF & PLANTS) & INCLUDE 1 YEAR WARRANTY FROM DATE OF FINAL ACCEPTANCE | PROVIDE WATERING OF ALL PLANT MATERIAL AS REQUIRED FOR PROPER ESTABLISHMENT, UNTIL END OF WARRANTY PERIOD | REFER TO CIVIL ENGINEER'S DRAWING FOR ELEVATIONS / GRADING |  
 The Landscape Plan is to be read in conjunction with the grading, servicing, site and survey plan | Bare root material to be planted in season only | All plant material locations to be staked on site by the landscape contractor and checked by the landscape architect prior to planting | All trees to be preserved on or directly adjacent to the site will be protected | Plant material are to be installed a minimum of, 3.0m away from any part of any hydro transformer, 3.0m corridor between a fire hydrant and the curb, a 2.5m radius beside or behind a fire hydrant, 2.0m from any servicing/utility line or structure |

- LANDSCAPE PLAN LEGEND**
- Proposed Coniferous Tree
  - Proposed Deciduous Tree
  - Proposed Planting Bed
  - PS-76-101-TP- Circum Bike Rack by HAUSER Anchor to Concrete
- REFER TO CIVIL BY DSEL**
- Water Service
  - Storm Service
  - Sanitary Service

No.	Revision	Date
4	SITE PLAN CONTROL SUBMISSION 2	APRIL 19 2021
3	SITE PLAN CONTROL SUBMISSION 1	AUGUST 27 2020
2	REVIEW/COORDINATION	AUGUST 6 2020
1	COORDINATION	JULY 2020



Property Owner  
**METRO**  
 25 Vickers Rd Bldg A 2 Floor, Etobicoke Ont M9B 1C1  
 416-234-6118

Gino J. Aiello landscape architect  
 www.GJALA.com  
 Gino@GJALA.com (613) 852 1343  
 110 Didsbury Road Unit # 9 | Ottawa Ontario | K2T 0C2

Project **1.5 Storey Metro Food Store & Retail Development**  
 GREENBANK AT CAMBRIAN ROADS NEPEAN  
 Drawing **Future / Ultimate Landscape Plan**  
 Date: **JULY 2020** Sheet Number  
 Scale: **1:400**  
 City of Ottawa  
 Dwg - ##### **L2**  
 D07-####