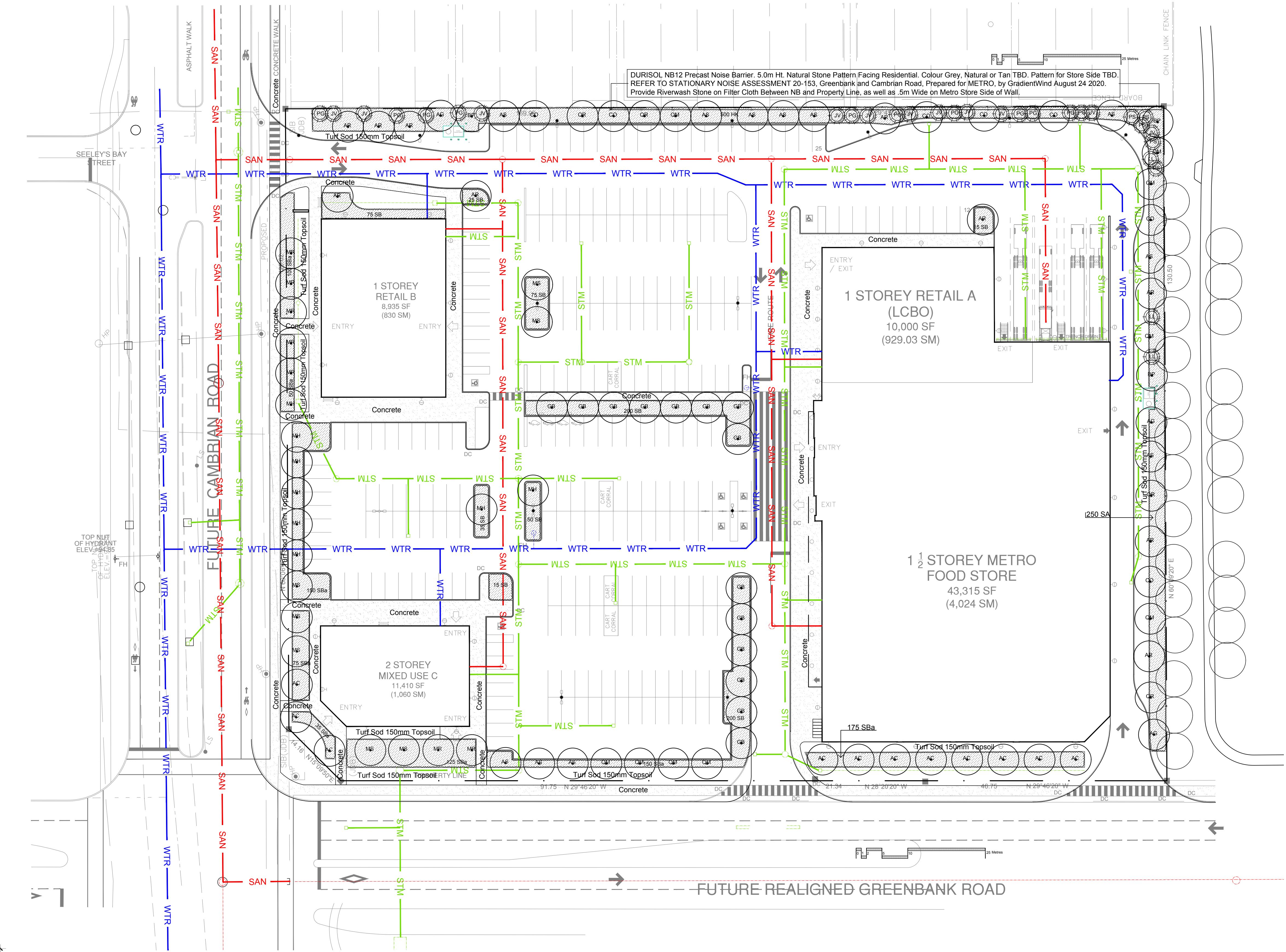
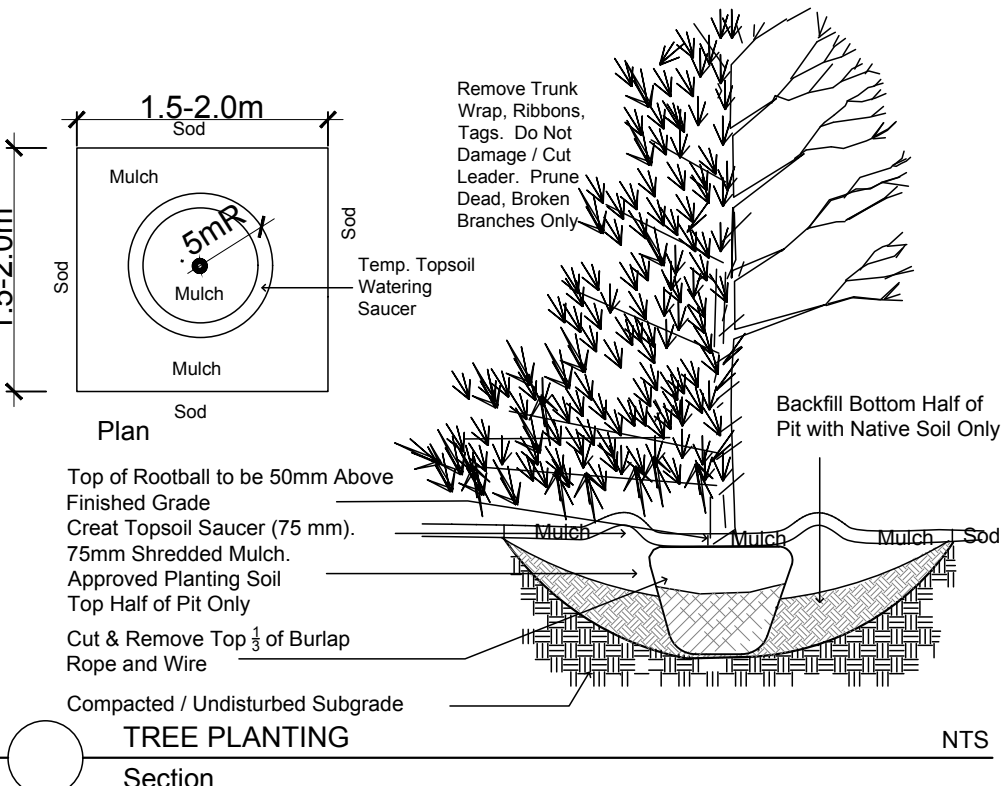
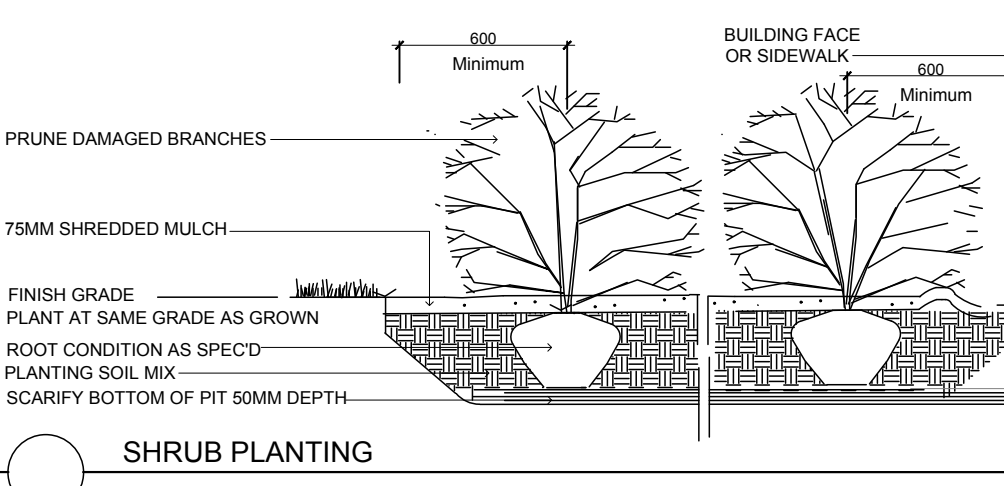
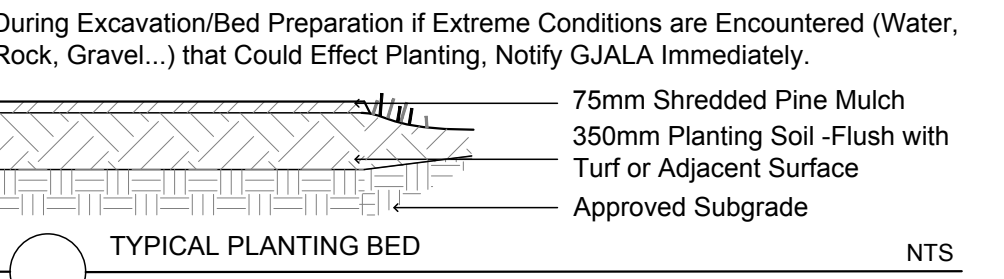
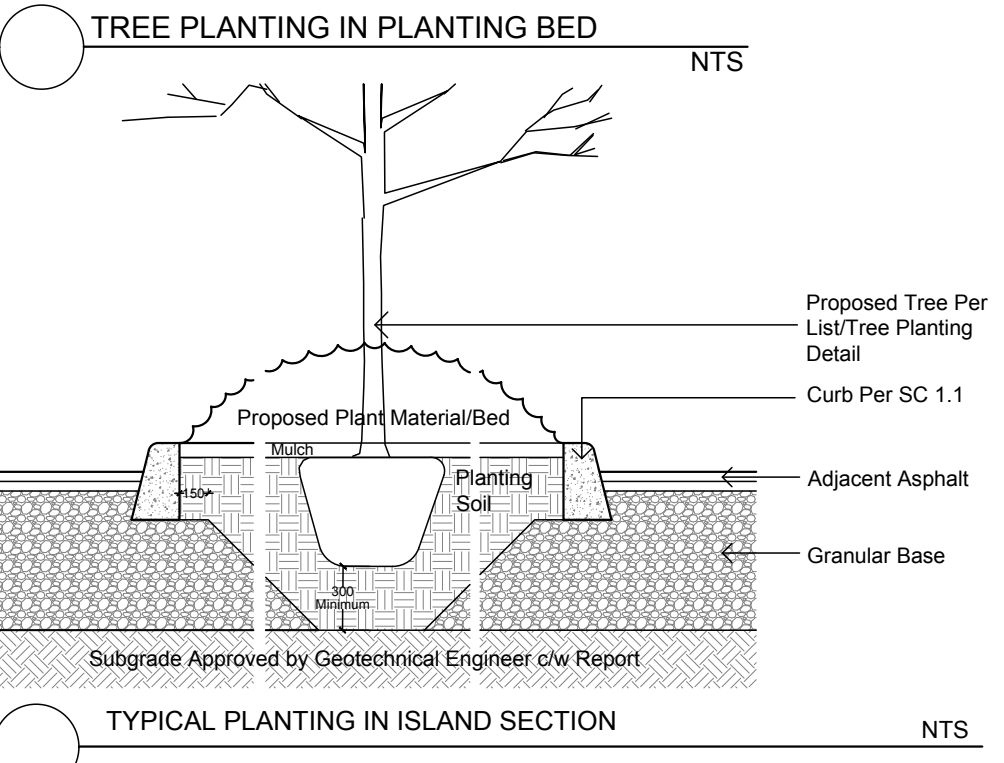
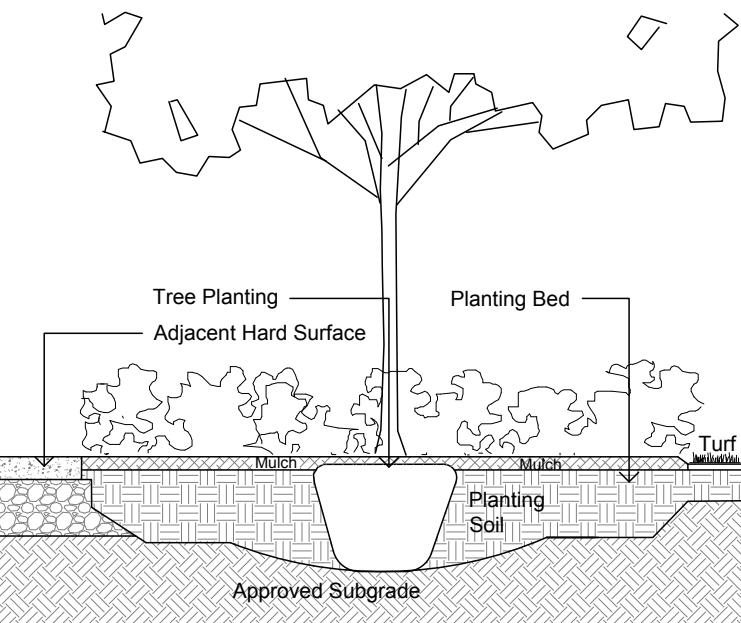


Circum Bicycle Rack
 P5-76-101-TP- Circum Bike Rack
 Depth: 2' (51 cm)
 Diameter: 24" (61.0 cm)
 Height: 32" (81.3 cm)
 Weight: 21.7 lb (9.9 kg)



HAUSER SITE FURNITURE
 sales@hausersite.com
 800-258-7328
 hausersite.com



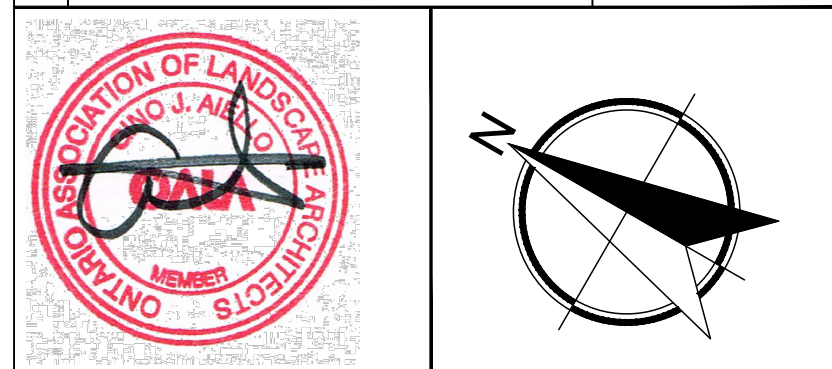
DURISOL NB12 Precast Noise Barrier. 5.0m Ht. Natural Stone Pattern Facing Residential. Colour Grey, Natural or Tan TBD. Pattern for Store Side TBD. REFER TO STATIONARY NOISE ASSESSMENT 20-153, Greenbank and Cambrian Road, Prepared for METRO, by GradientWind August 24 2020. Provide Riverwash Stone on Filter Cloth Between NB and Property Line, as well as 5m Wide on Metro Store Side of Wall.

Drawing Remains the Property of/Copyright Reserved by Gino J. Aiello Landscape Architect. Do Not Use or Reproduce Without Approval of Gino J. Aiello. **NOT To Be Used For Construction Unless** indicated by Revision: **"FOR LANDSCAPE CONSTRUCTION"**. Contractor is Responsible for Verification of Site Locations of all Utilities. Report any Discrepancies Between Site and Drawing Immediately to Gino J. Aiello. Do NOT Proceed Until Clarified.
 TURF AREAS TO BE SOD C/W 150MM DEPTH TOPSOIL ON APPROVED SUBGRADE | SOD TO BE #1 GRADE TURFGRASS NURSERY SOD per NSGA - Fine Fescue/Kentucky Bluegrass Sod | PLANTING MIX TO BE APPROVED BY LANDSCAPE ARCHITECT | PLANT MATERIAL TO MEET CNLA STANDARDS/BE APPROVED BY LANDSCAPE ARCHITECT PRIOR TO PLANTING | ALL MATERIALS & WORK TO BE MAINTAINED UNTIL FINAL ACCEPTANCE. (MOWING TURF, WEEDING BEDS, WATERING TURF & PLANTS) & INCLUDE 1 YEAR WARRANTY FROM DATE OF FINAL ACCEPTANCE | PROVIDE WATERING OF ALL PLANT MATERIAL AS REQUIRED FOR PROPER ESTABLISHMENT, UNTIL END OF WARRANTY PERIOD | REFER TO CIVIL ENGINEER'S DRAWING FOR ELEVATIONS / GRADING |
 The Landscape Plan is to be read in conjunction with the grading, servicing, site and survey plan | Bare root material to be planted in season only | All plant material locations to be staked on site by the landscape contractor and checked by the landscape architect prior to planting | All trees to be preserved on or directly adjacent to the site will be protected | Plant material are to be installed a minimum of 3.0m away from any part of any hydro transformer, 3.0m corridor between a fire hydrant and the curb, a 2.5m radius beside or behind a fire hydrant, 2.0m from any servicing/utility line or structure |

LANDSCAPE PLAN LEGEND

- Proposed Coniferous Tree
 - Proposed Deciduous Tree
 - Proposed Planting Bed
 - PS-76-101-TP- Circum Bike Rack by HAUSER Anchor to Concrete
- REFER TO CIVIL BY DSEL**
- WTR Water Service
 - STM Storm Service
 - SAN Sanitary Service

No.	Revision	Date
7	NOISE BARRIER SPECIFIED	SEPTEMBER 1 2021
6	SITE PLAN CONTROL SUBMISSION 4	JUNE 30 2021
5	SITE PLAN CONTROL SUBMISSION 3	MAY 31 2021
4	SITE PLAN CONTROL SUBMISSION 2	APRIL 19 2021
3	SITE PLAN CONTROL SUBMISSION 1	AUGUST 27 2020
2	REVIEW/COORDINATION	AUGUST 6 2020
1	COORDINATION	JULY 2020

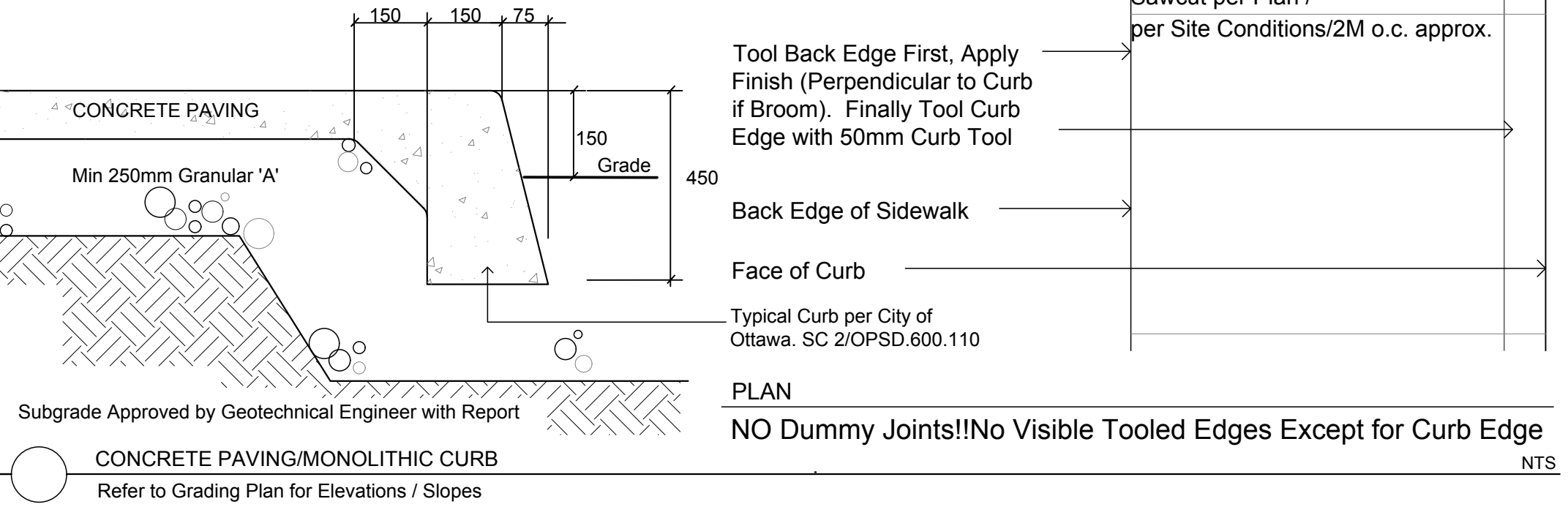
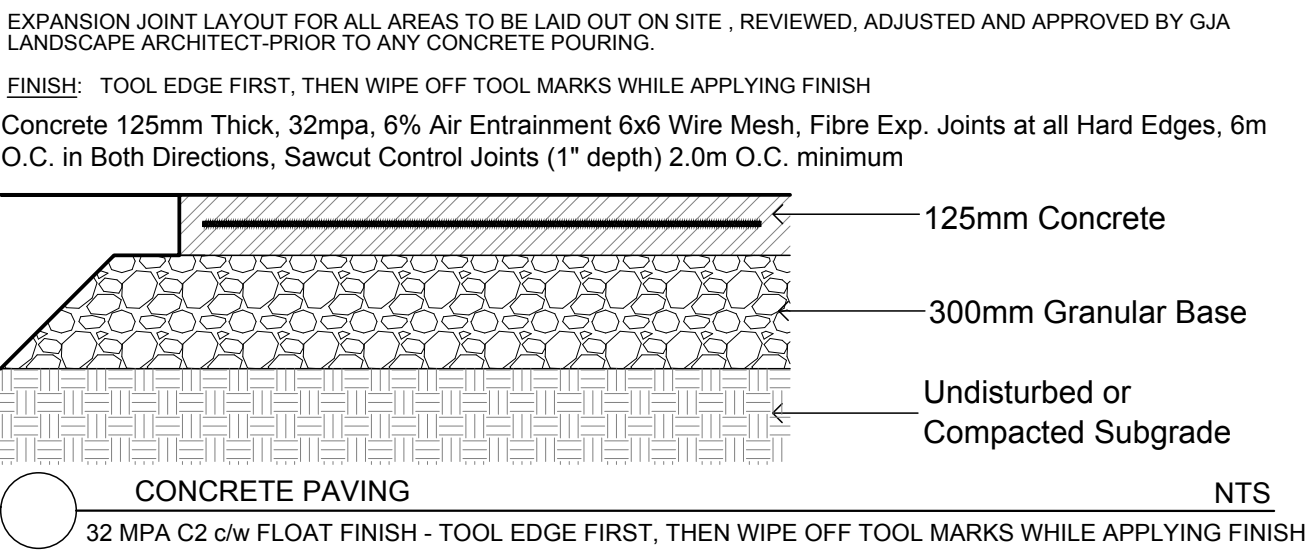


Property Owner
METRO
 25 Vickers Rd Bldg A 2 Floor, Etobicoke Ont M9B 1C1
 416-234-6118

Gino J. Aiello landscape architect
 www.GJALA.com
 Gino@GJALA.com (613) 852 1343
 110 Didsbury Road Unit # 9 | Ottawa Ontario | K2T 0C2

Project **1.5 Storey Metro Food Store & Retail Development**
 GREENBANK AT CAMBRIAN ROADS NEPEAN
 Drawing **Future / Ultimate Landscape Plan**
 Date: **JULY 2020** Sheet Number
 Scale: **1:400**
 City of Ottawa
 Dwg - ##### **L2**

GENERAL CONCRETE NOTES:
 ALL CONCRETE FINISHES TO BE APPROVED BY GJA LANDSCAPE ARCHITECT.
 SAWCUT LAYOUT FOR ALL AREAS TO BE MARKED ON SITE IN RED CHALK, REVIEWED, ADJUSTED AND APPROVED BY GJA LANDSCAPE ARCHITECT PRIOR TO ANY CUTTING.
 EXPANSION JOINT LAYOUT FOR ALL AREAS TO BE LAID OUT ON SITE, REVIEWED, ADJUSTED AND APPROVED BY GJA LANDSCAPE ARCHITECT PRIOR TO ANY CONCRETE POURING.
 FINISH: TOOL EDGE FIRST, THEN WIPE OFF TOOL MARKS WHILE APPLYING FINISH
 Concrete 125mm Thick, 32mpa, 6% Air Entrainment 6x6 Wire Mesh, Fibre Exp. Joints at all Hard Edges, 6m O.C. in Both Directions, Sawcut Control Joints (1" depth) 2.0m O.C. minimum



Code	Qty.	Botanical Name	Common Name	Size	Condition
AC	6	Amelanchier canadensis	Tree Serviceberry	60mm cal	B + B specimen
AG	6	Aesculus glabra	Ohio Buckeye	60mm cal	B + B specimen
AR	11	Acer rubrum	Red Maple	70mm cal	B + B specimen
AS	11	Acer saccharum	Sugar Maple	70mm cal	B + B specimen
BP	3	Betula papyrifera	Paper Birch	60mm cal	B + B specimen
CD	8	Celtis occidentalis	Common Hackberry	60mm cal	B + B specimen
GB	14	Ginkgo biloba	Maidenhair Tree	70mm cal	B + B specimen
MH	8	Malus 'Harvest Gold'	Harvest Gold Crabapple	60mm cal	B + B specimen
MR	7	Malus 'Royal Raindrops'	Royal Raindrops Crabapple	60mm cal	B + B specimen
MS	7	Malus 'Red Splendor'	Red Splendor Crabapple	60mm cal	B + B specimen
QM	7	Quercus macrocarpa	Burr Oak	70mm cal	B + B specimen
QR	4	Quercus rubra	Red Oak	60mm cal	B + B specimen
JV	3	Juniperus virginiana	Eastern Red Cedar	1.5m Ht.	B + B specimen
LC	5	Larix laricina	Eastern Larch / Tamarack	1.75m Ht.	B + B specimen
SC	5	Pinus strobus	White Spruce	2.0m Ht.	B + B specimen
PS	6	Pinus strobus	White Pine	1.5m Ht.	B + B specimen

Code	Qty.	Botanical Name	Common Name	Size	Condition
HK	500	Hypericum kalmianum	St. John's Wort	30cm Ht.	Pot
SN	250	Symonacarpus albus	Snowberry	60cm Ht.	Pot
SB	690	Spiraea bumalda 'Dart's Red'	Dart's Red Spirea	40cm Ht.	Pot
Sba	860	Spiraea bumalda 'Anthony Waterer'	Anthony Waterer Spirea	50cm Ht.	Pot