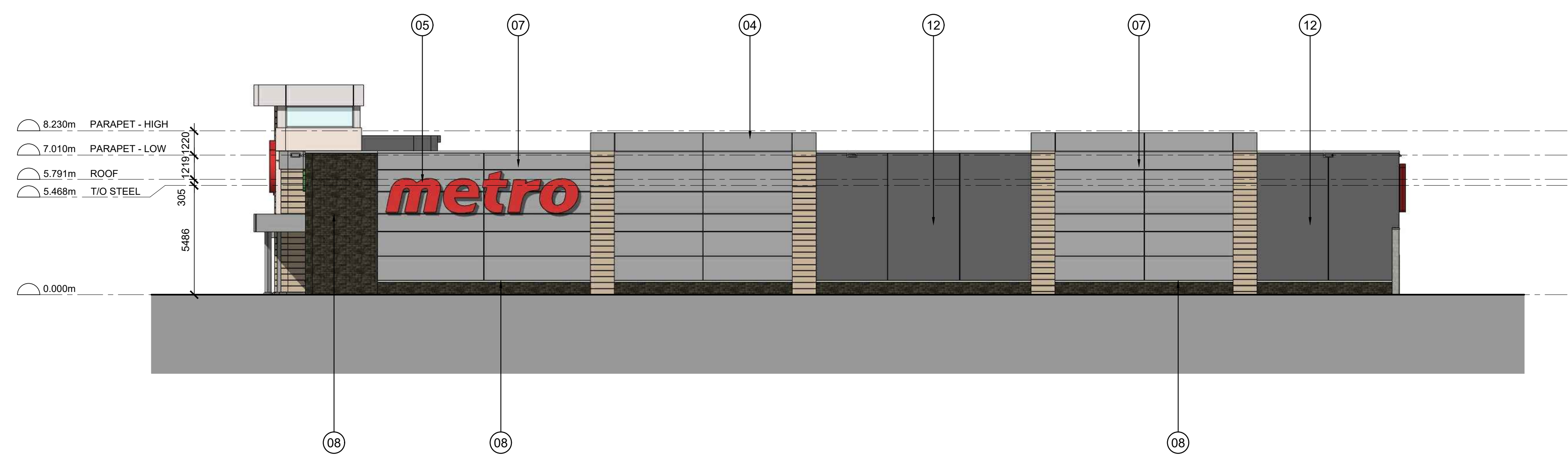
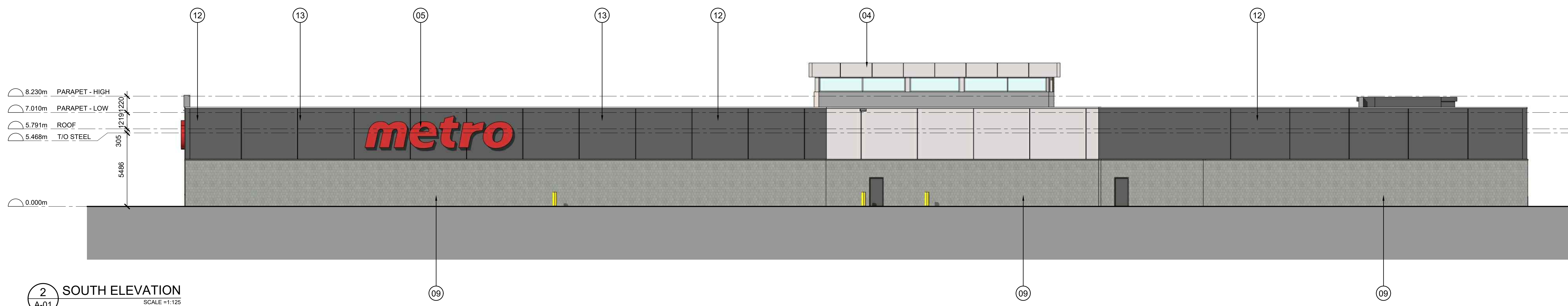


IT IS THE RESPONSIBILITY OF THE APPROPRIATE CONTRACTOR TO CHECK AND VERIFY ALL DIMENSIONS ON SITE AND TO REPORT ALL ERRORS AND/OR OMISSIONS TO THE ARCHITECT.  
 ALL CONTRACTORS MUST COMPLY WITH ALL PERTINENT CODES AND BY-LAWS.  
 THIS DRAWING MAY NOT BE USED FOR CONSTRUCTION UNTIL SIGNED BY THE ARCHITECT.  
 DO NOT SCALE DRAWINGS.  
 COPYRIGHT RESERVED.

**NOTATION SYMBOLS:**

- (1) INDICATES DRAWING NOTES, LISTED ON EACH SHEET.
- (2) INDICATES ASSEMBLY TYPE: REFER TO TYPICAL ASSEMBLY SCHEDULE.
- (3) INDICATES WINDOW TYPE: REFER TO WINDOW ELEVATIONS AND DETAILS ON A800 SERIES.
- (4) INDICATES DOOR TYPE: REFER TO DOOR SCHEDULE AND DETAILS ON A800 SERIES.
- (5) DETAIL NUMBER
- (6) TITLE
- (7) SCALE
- (8) DETAIL REFERENCE PAGE
- (9) DETAIL CROSS REFERENCE PAGE



EXTERIOR FINISH SCHEDULE	
1	WINDOWS & DOORS - CLEAR VISION GLASS
2	FRAMES - CLEAR ANODIZED ALUMINUM
3	FRAMES - PREFINISHED ALUMINUM: COLOUR IRON ORE
4	ALUMINUM COMPOSITE PANELS, CLEAR ANODIZED ALUMINUM
5	ALUMINUM COMPOSITE PANELS, TOR RED
6	ALUMINUM COMPOSITE PANELS, SANDSTONE
7	EIFS: COLOUR GRANITSTONE
8	BRICK: MELVILLE SLIK BRICK BY PERMICON, COLOUR OCKLAND BLACK
9	ARCHITECTURAL BLOCK: BY RICHVALE YORK BLOCK, COLOUR DARK CHARCOAL
10	BRICK SILL: DIAMOND BLACK
11	PREFINISHED ALUMINUM PLATE PANELS: COLOUR SANDSTONE
12	PREFINISHED METAL SIDING, BY VICWEST: COLOUR STONE GREY
13	PREFINISHED METAL SIDING, BY VICWEST: COLOUR CHARCOAL
14	PREFINISHED METAL CAP FLASHING: COLOUR STONE GREY
15	PREFINISHED METAL CAP FLASHING: COLOUR CHARCOAL
16	PREFINISHED INSULATED METAL OVERHEAD DOORS: COLOUR WHITE
17	EXPOSED CONCRETE FOUNDATION WALL PARGED FINISH
18	BRICK: LIGHT BROWN
19	PREFINISHED METAL SIDING BY LONGBOARD: COLOUR DARK WALNUT
20	PREFINISHED METAL SIDING BY LONGBOARD: COLOUR LIGHT FIR
21	PREFINISHED METAL PANELS BY ALUCOBOND: COLOUR STEEL CITY SILVER MICA
22	PREFINISHED METAL PANELS BY ALUCOBOND: COLOUR GRAPHITE MICA
23	PREFINISHED INSULATED METAL OVERHEAD DOORS: COLOUR CHARCOAL

REVISOR	DESCRIPTION	DATE
△	REVISED FOR 2nd ROUND OF COMMENTS	May 20, 21
△	ISSUED FOR SPC ROUND #1 COMMENTS	Apr. 20, 21

ARCHITECT SEAL: NORTH ARROW:

**metro**  
 25 Vickers Rd Bldg A 2 Floor, Etobicoke Ont M9B 1C1  
 Tel: 416-234-8118 Fax: 416-234-8927

ARCHITECT:  
  
 56 beech street, ottawa, ontario K1S 3J6  
 t. 613.724.9932 f. 613.724.1209 rlaarchitecture.ca

PROJECT TITLE:  
**METRO - BARRHAVEN  
 GREENBANK ROAD @  
 CAMBRIAN ROAD**  
 OTTAWA ONTARIO

SHEET TITLE:  
**BUILDING "A - B"  
 ELEVATIONS**

DRAWN: TZ	CHECKED: R.V.
SCALE: 1:150	SHEET No.:
PROJECT No.:	<b>A-02</b>
1949	