

HILLSIDE APARTMENTS

LANDRIC HOMES

OTTAWA, ONTARIO

ISSUED FOR SPA

DRAWING INDEX

PRE DEVELOPMENT VEGETATION MAP L-TP1

POST DEVELOPMENT VEGETATION MAP L-TP2



LASHLEY + ASSOCIATES

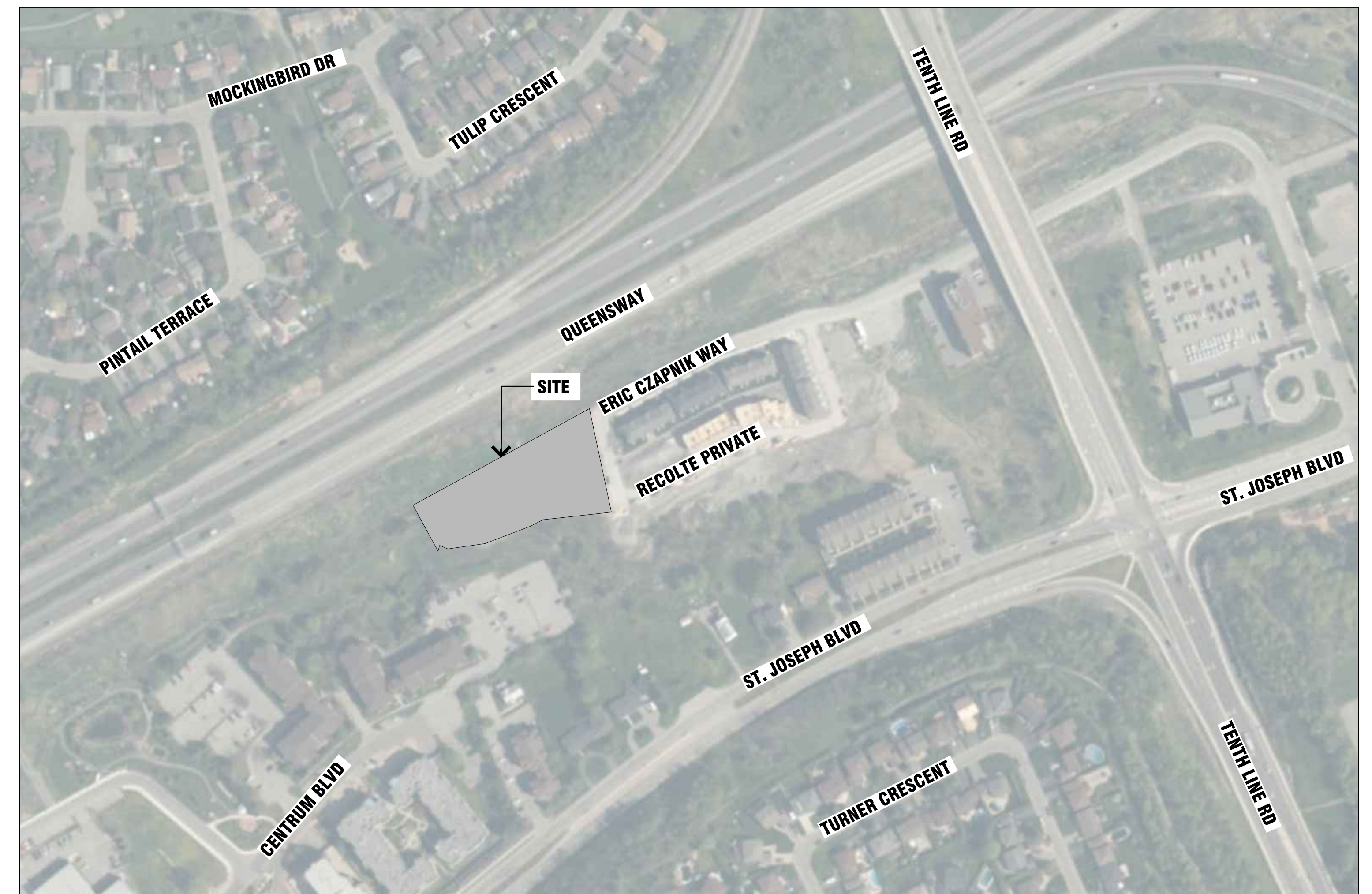
LANDSCAPE ARCHITECTURE
& SITE ENGINEERING

202-950 GLADSTONE AVENUE
OTTAWA, ON K1Y 3E6

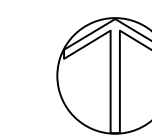
T 613 233 8579

F 613 233 4051

W LashleyLA.com

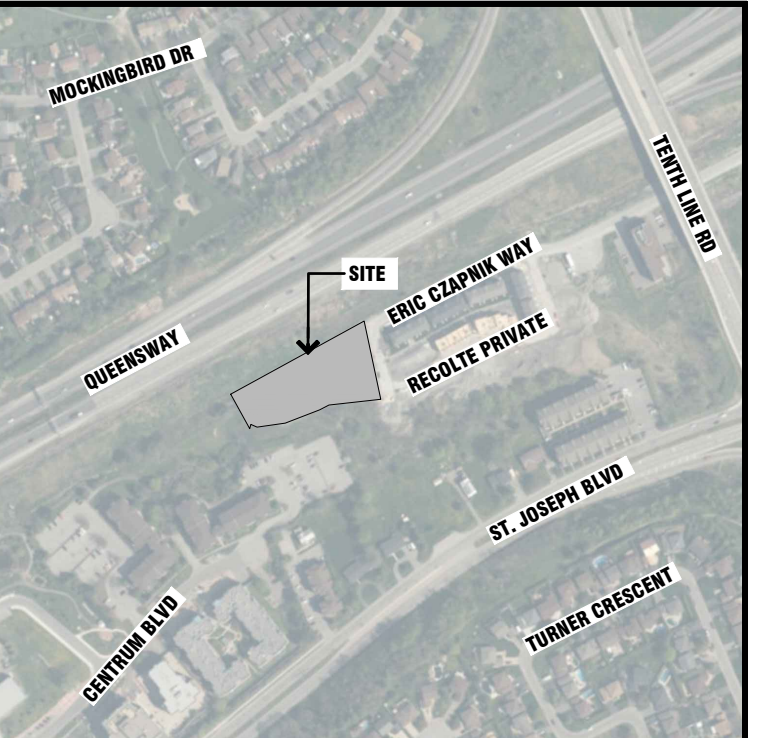
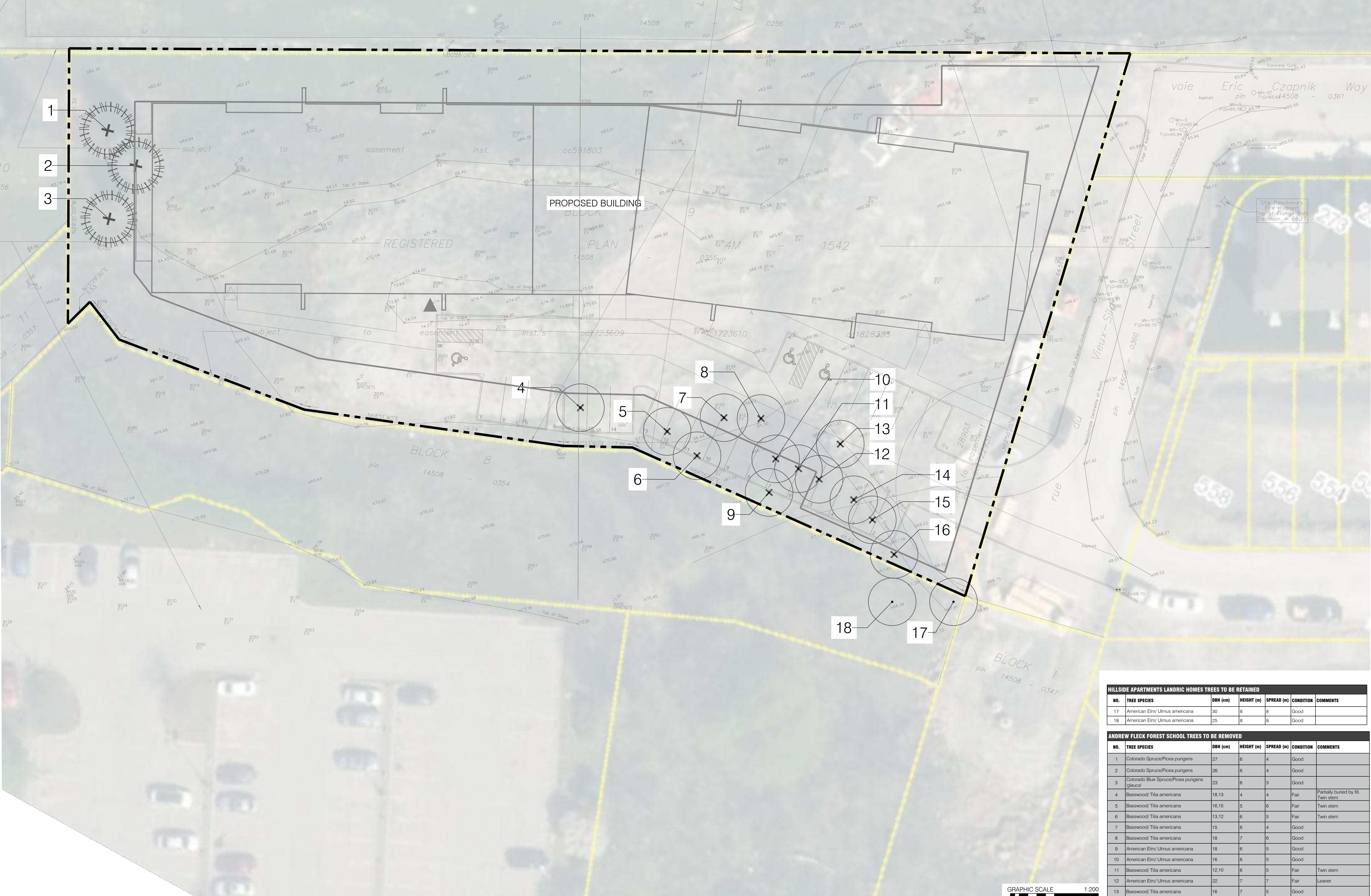


KEY PLAN
SCALE 1:2000



LEGEND

- EXISTING CONIFEROUS TREE TO REMAIN
- EXISTING DECIDUOUS TREE TO REMAIN
- PROPERTY LINE
- EXISTING CONIFEROUS TREE TO BE REMOVED
- EXISTING DECIDUOUS TREE TO BE REMOVED



- KEY MAP, NTS**
- L-TP1 GENERAL NOTES**
- All general site information and conditions compiled from architect's and engineer's plans and surveys.
 - Do not scale this drawing.
 - Report any discrepancies prior to commencing work. No responsibility is born by the Landscape Architect for unknown subsurface conditions.
 - Reinstatement all areas and items damaged as a result of construction activities to the satisfaction of the Landscape Architect.
 - Drawing may not be used for construction until signed by Landscape Architect as issued for construction.
 - The accuracy of the position of utilities is not guaranteed.
 - Individual utility co. must be contacted for confirmation of utility existence and location prior to digging.
 - This drawing is an instrument of service and requires the permission of the Landscape Architect for use. Copyright is reserved by the Landscape Architect, David M. Lashley.

NO.	DATE	DESCRIPTION
2	2020/08/05	ISSUED FOR SPA
1	2020/04/21	ISSUED FOR REVIEW

SEAL:

NORTH:

LASHLEY + ASSOCIATES
LANDSCAPE ARCHITECTURE AND SITE ENGINEERING

205-205 CLARKESTONE AVENUE
OTTAWA, ON N1T 4S6
T 613 238 8279
F 613 238 4201
W LashleyA.com
E Mail@LashleyA.com

CONSULTANT:

PROJECT:

**HILLSIDE APARTMENTS
LANDRIC HOMES
ORLEANS, OTTAWA**

DRAWING TITLE:

**PRE DEVELOPMENT
VEGETATION MAP**

DATE: 2020/04/15 **DRAWING NO.:**

SCALE: 1:200

DRAWN BY: EL

LA PROJECT NO.: 19742-1

HILLSIDE APARTMENTS LANDRIC HOMES TREES TO BE RETAINED

NO.	TREE SPECIES	DBH (cm)	HEIGHT (m)	SPREAD (m)	CONDITION	COMMENTS
17	American Elm/ Ulmus americana	30	8	8	Good	
18	American Elm/ Ulmus americana	25	8	8	Good	

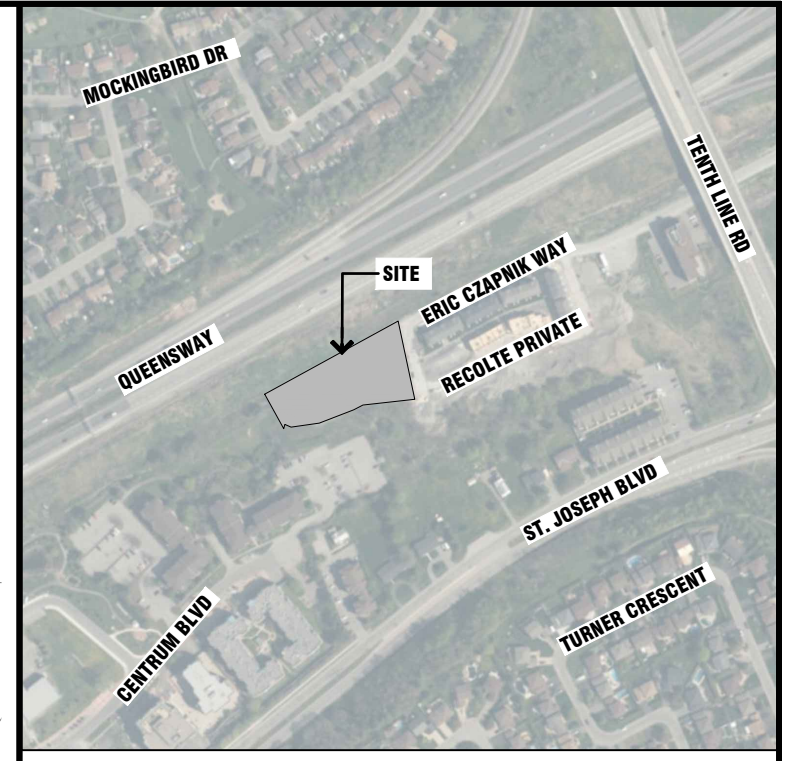
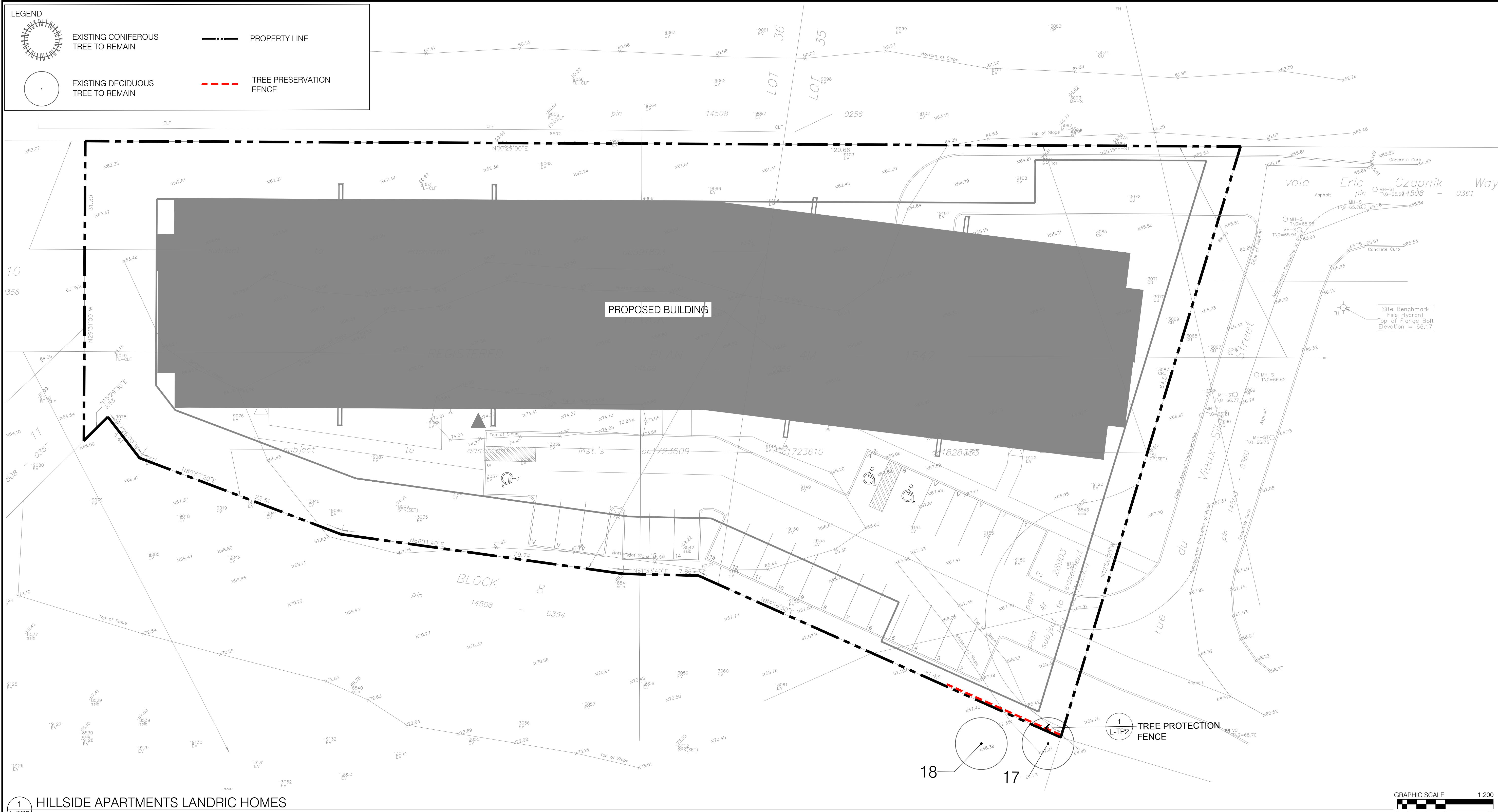
ANDREW FLECK FOREST SCHOOL TREES TO BE REMOVED

NO.	TREE SPECIES	DBH (cm)	HEIGHT (m)	SPREAD (m)	CONDITION	COMMENTS
1	Colorado Spruce/Picea pungens	27	6	4	Good	
2	Colorado Spruce/Picea pungens	26	6	4	Good	
3	Colorado Blue Spruce/Picea pungens glauca	23	6	3	Good	
4	Basswood/ Tilia americana	18,13	4	4	Fair	Partially buried by fill. Twin stem
5	Basswood/ Tilia americana	16,15	5	6	Fair	Twin stem
6	Basswood/ Tilia americana	13,12	6	5	Fair	Twin stem
7	Basswood/ Tilia americana	15	6	4	Good	
8	Basswood/ Tilia americana	18	7	6	Good	
9	American Elm/ Ulmus americana	18	6	5	Good	
10	American Elm/ Ulmus americana	16	6	5	Good	
11	Basswood/ Tilia americana	12,10	6	5	Fair	Twin stem
12	American Elm/ Ulmus americana	22	7	7	Fair	Leaner
13	Basswood/ Tilia americana	16	7	5	Good	
14	Basswood/ Tilia americana	15	7	4	Good	
15	Basswood/ Tilia americana	13,13	6	6	Fair	2 Stems joined at base
16	Basswood/ Tilia americana	17	7	6	Good	



LEGEND

- EXISTING CONIFEROUS TREE TO REMAIN
- EXISTING DECIDUOUS TREE TO REMAIN
- PROPERTY LINE
- TREE PRESERVATION FENCE

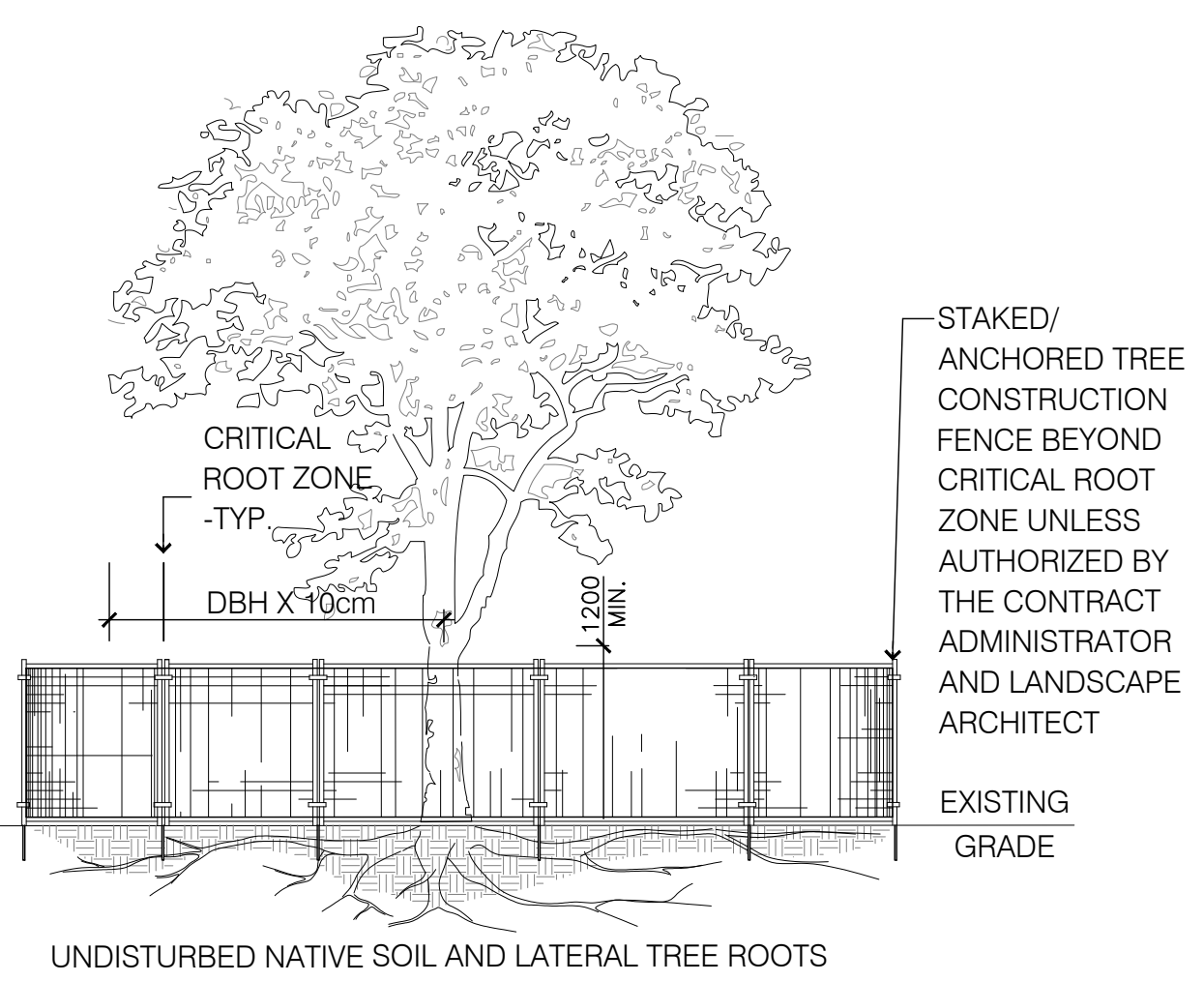


- KEY MAP, NTS**
- L-TP2 GENERAL NOTES**
- All general site information and conditions compiled from architect's and engineer's plans and surveys.
 - Do not scale this drawing.
 - Report any discrepancies prior to commencing work. No responsibility is born by the Landscape Architect for unknown subsurface conditions.
 - Reinstate all areas and items damaged as a result of construction activities to the satisfaction of the Landscape Architect.
 - Drawing may not be used for construction until signed by Landscape Architect as issued for construction.
 - The accuracy of the position of utilities is not guaranteed.
 - Individual utility co. must be contacted for confirmation of utility existence and location prior to digging.
 - This drawing is an instrument of service and requires the permission of the Landscape Architect for use. Copyright is reserved by the Landscape Architect, David M. Lashley.

1 HILLSIDE APARTMENTS LANDRIC HOMES

NOTES:
THE FOLLOWING PROTECTION MEASURES MUST BE IMPLEMENTED FOR RETAINED TREES, BOTH WITHIN THE WORK AREA AND ON ADJACENT PARCELS.

- UNDER THE GUIDANCE OF AN ARBORIST, ERECT A MODULAR FENCE AT THE CRITICAL ROOT ZONE (CRZ) OF TREES WHERE THE CRZ IS ESTABLISHED AS BEING 10 CENTIMETERS FROM THE TRUNK FOR EVERY CENTIMETER OF TRUNK DIAMETER AT BREAST HEIGHT.
- TREE PROTECTION SHALL BE ERECTED TO PROVIDE A CONTINUOUS BARRICADE BETWEEN DESIGNATED TREES AND THE WORK AREA PRIOR TO CONSTRUCTION.
- TUNNEL OR BORE WHEN DIGGING WITHIN THE CRZ OF A TREE.
- ENSURE ALL EQUIPMENT AND CONSTRUCTION RELATED MATERIAL ARE NOT PLACED OR TEMPORARILY STORED WITHIN THE CRZ.
- ENSURE EXHAUST FUMES FROM ALL EQUIPMENT ARE NOT DIRECTED TOWARDS ANY TREE'S CANOPY.
- FLOODING OR DEPOSITION OF SEDIMENT SHALL BE PREVENTED WHERE TREES ARE LOCATED.
- ALL DISTURBED ROOT SYSTEMS SHALL BE EXPOSED AND BACKFILLED IN ONE CONTINUOUS OPERATION TO MINIMIZE DESICCATION.
- EXPOSED ROOTS SHALL BE KEPT CONTINUOUSLY MOIST DURING EXCAVATION.
- REMOVE BROKEN AND DAMAGED ROOTS WITH SHARP PRUNING SHEARS.
- THE TREE PROTECTION MODULAR FENCE IS TEMPORARY, SHALL BE MAINTAINED AT ALL TIMES DURING CONSTRUCTION OPERATIONS, AND SHALL BE REMOVED UPON COMPLETION OF WORK WHEN AGREED TO BY THE CONTRACT ADMINISTRATOR AND LANDSCAPE ARCHITECT.



2 TREE PROTECTION FENCE

1:50



HILLSIDE APARTMENTS LANDRIC HOMES TREES TO BE RETAINED

NO.	TREE SPECIES	DBH (cm)	HEIGHT (m)	SPREAD (m)	CONDITION	COMMENTS
17	American Elm/ Ulmus americana	30	8	8	Good	
18	American Elm/ Ulmus americana	25	8	8	Good	

ANDREW FLECK FOREST SCHOOL TREES TO BE REMOVED

NO.	TREE SPECIES	DBH (cm)	HEIGHT (m)	SPREAD (m)	CONDITION	COMMENTS
1	Colorado Spruce/ Picea pungens	27	6	4	Good	
2	Colorado Spruce/ Picea pungens	26	6	4	Good	
3	Colorado Blue Spruce/ Picea pungens glauca	23	6	3	Good	
4	Basswood/ Tilia americana	18.13	4	4	Fair	Partially buried by fill
5	Basswood/ Tilia americana	16.15	5	6	Fair	Twin stem
6	Basswood/ Tilia americana	13.12	6	5	Fair	Twin stem
7	Basswood/ Tilia americana	15	6	4	Good	
8	Basswood/ Tilia americana	18	7	6	Good	
9	American Elm/ Ulmus americana	18	6	5	Good	
10	American Elm/ Ulmus americana	16	6	5	Good	
11	Basswood/ Tilia americana	12.10	6	5	Fair	Twin stem
12	American Elm/ Ulmus americana	22	7	7	Fair	Leaner
13	Basswood/ Tilia americana	16	7	5	Good	
14	Basswood/ Tilia americana	15	7	4	Good	
15	Basswood/ Tilia americana	13.13	6	6	Fair	2 Stems joined at base
16	Basswood/ Tilia americana	17	7	6	Good	

LASHLEY + ASSOCIATES
LANDSCAPE ARCHITECTURE AND SITE ENGINEERING

202-800-CLARISTONE AVENUE
OTTAWA, ON K1T 3S6
T 613 238 8870
F 613 238 4201
W LashleyA.com
E Mail@LashleyA.com

CONSULTANT:

PROJECT:
HILLSIDE APARTMENTS LANDRIC HOMES
ORLEANS, OTTAWA

DRAWING TITLE:
POST DEVELOPMENT VEGETATION MAP

DATE: 2020/04/15 **DRAWING NO.:**
SCALE: 1:200
DRAWN BY: EL
LA PROJECT NO.: 19742-1

L-TP2