

# HILLSIDE APARTMENTS

## LANDRIC HOMES

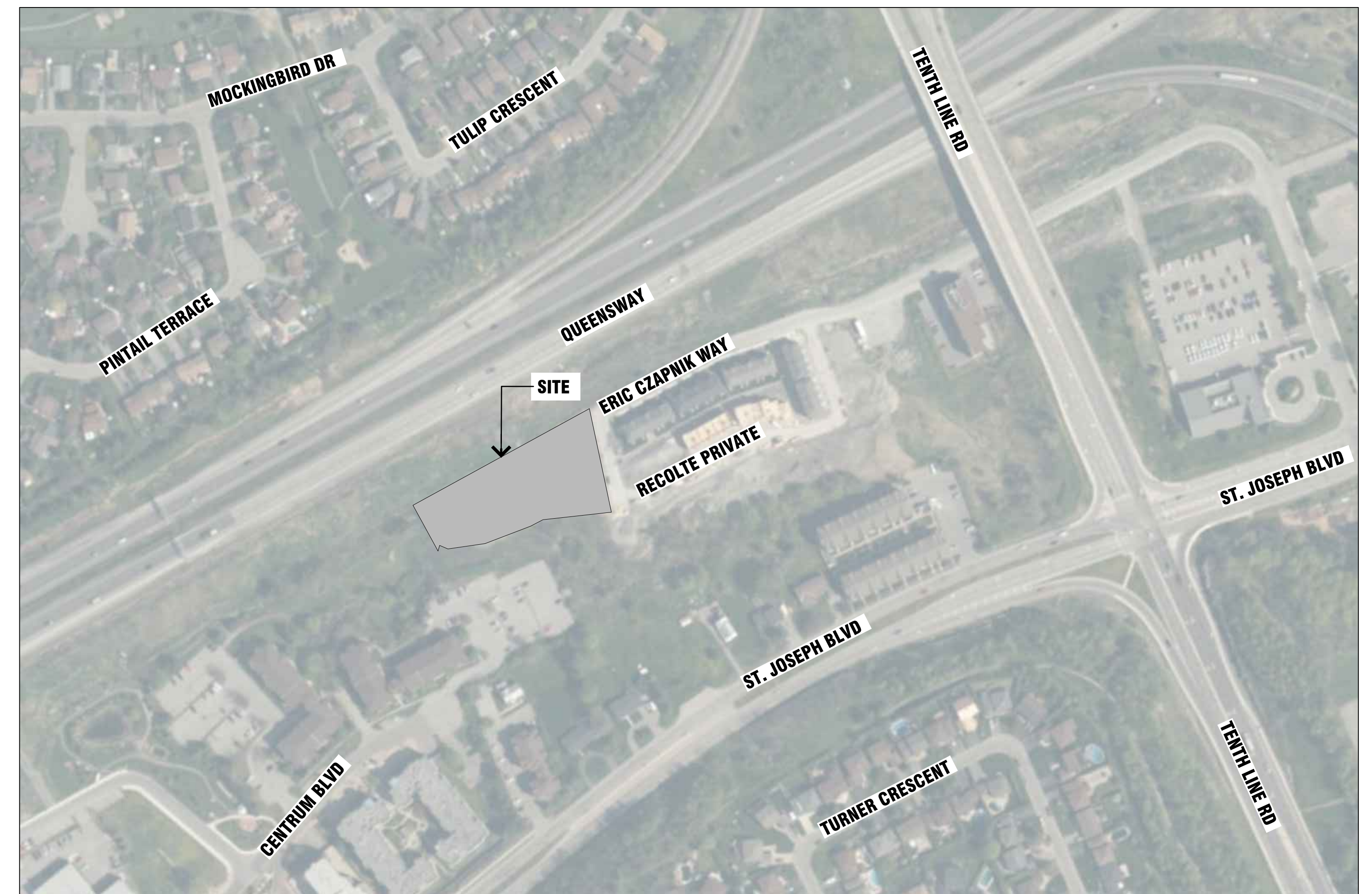
OTTAWA, ONTARIO  
RE-ISSUED FOR SPA  
2021-01-08

### DRAWING INDEX

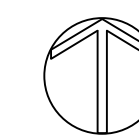
PRE DEVELOPMENT VEGETATION MAP L-TP1  
POST DEVELOPMENT VEGETATION MAP L-TP2  
LANDSCAPE PLAN L-100  
LANDSCAPE DETAILS L-101



LASHLEY + ASSOCIATES  
LANDSCAPE ARCHITECTURE  
& SITE ENGINEERING  
202-950 GLADSTONE AVENUE  
OTTAWA, ON K1Y 3E6  
T 613 233 8579  
F 613 233 4051  
W LashleyLA.com

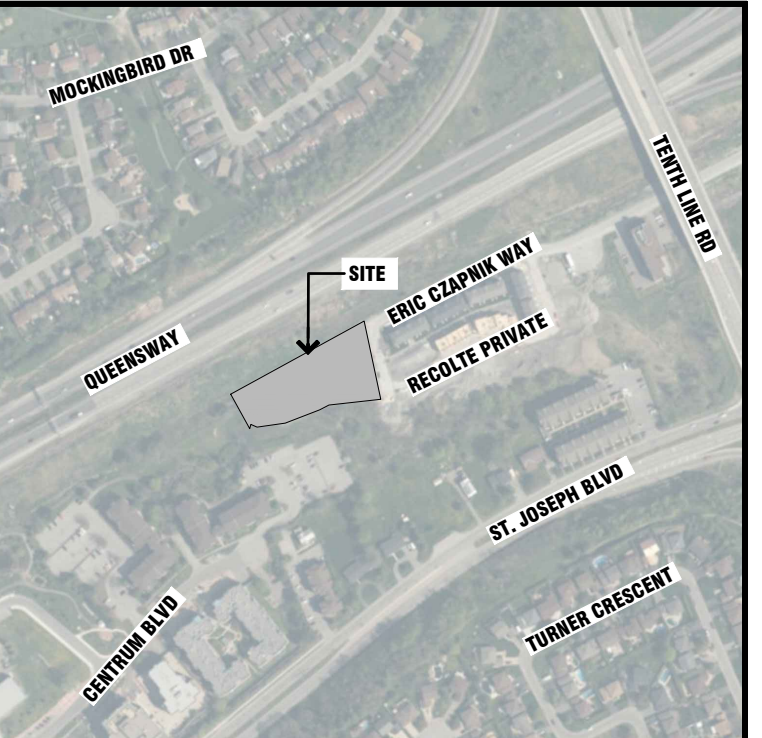
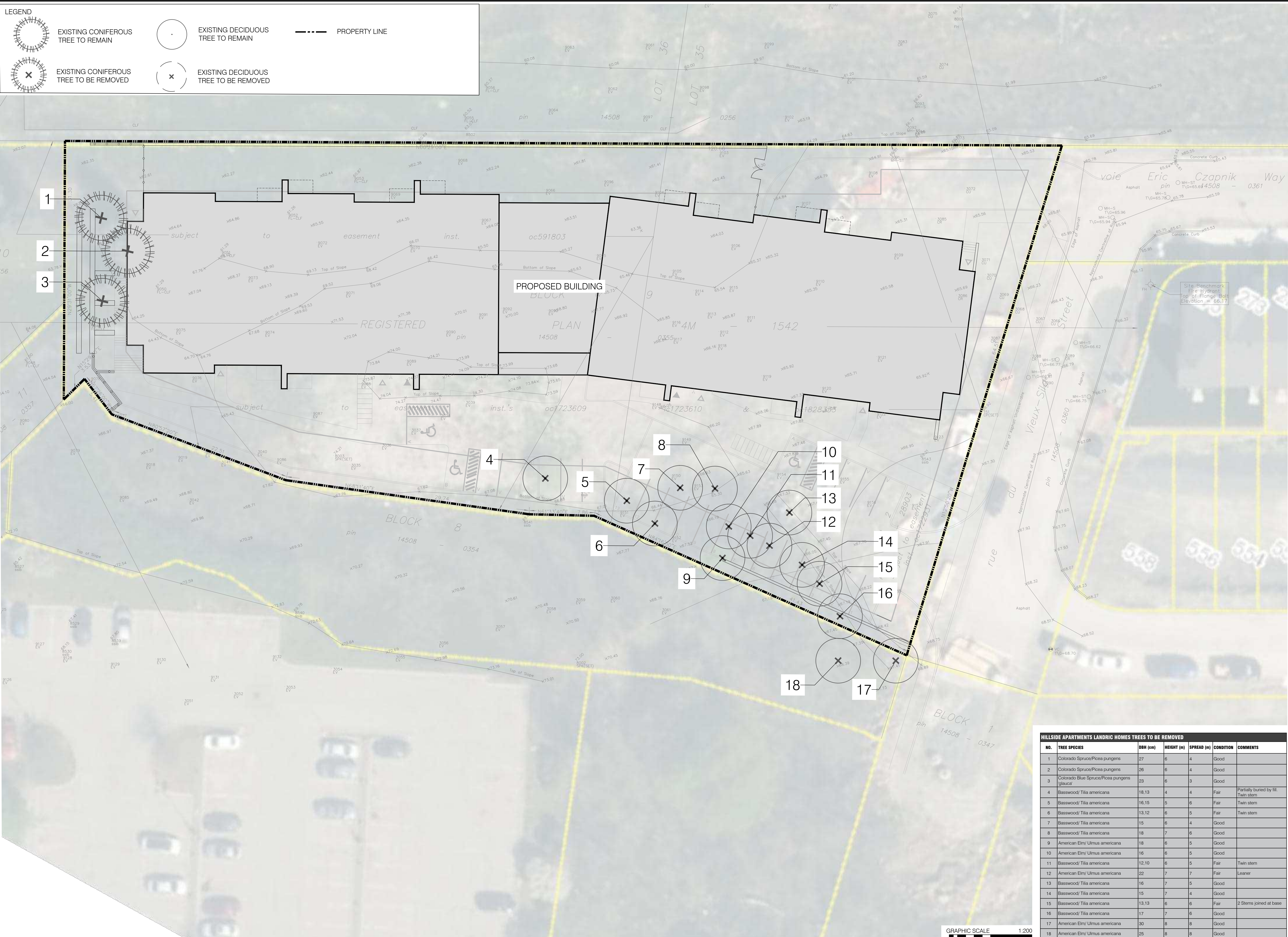


KEY PLAN  
SCALE 1:2000



**LEGEND**

- EXISTING CONIFEROUS TREE TO REMAIN
- EXISTING DECIDUOUS TREE TO REMAIN
- PROPERTY LINE
- EXISTING CONIFEROUS TREE TO BE REMOVED
- EXISTING DECIDUOUS TREE TO BE REMOVED



- KEY MAP, NTS**
- L-TP1 GENERAL NOTES**
- All general site information and conditions compiled from architect's and engineer's plans and surveys.
  - Do not scale this drawing.
  - Report any discrepancies prior to commencing work. No responsibility is born by the Landscape Architect for unknown subsurface conditions.
  - Reinstatement all areas and items damaged as a result of construction activities to the satisfaction of the Landscape Architect.
  - Drawing may not be used for construction until signed by Landscape Architect as issued for construction.
  - The accuracy of the position of utilities is not guaranteed.
  - Individual utility co. must be contacted for confirmation of utility existence and location prior to digging.
  - This drawing is an instrument of service and requires the permission of the Landscape Architect for use. Copyright is reserved by the Landscape Architect, David M. Lashley.

NO.	DATE	DESCRIPTION
3	2021/01/08	RE-ISSUED FOR SPA
2	2020-08-20	ISSUED FOR SPA
1	2020-04-21	ISSUED FOR REVIEW

**NO. DATE DESCRIPTION**

**SEAL:**

**NORTH:**

**LASHLEY + ASSOCIATES**  
LANDSCAPE ARCHITECTURE AND SITE ENGINEERING

200-200 CLARKESTONE AVENUE  
OTTAWA, ON N1T 4S6  
T 613 238 8670  
F 613 238 4201  
W LashleyLA.com  
E Mail@LashleyLA.com

**CONSULTANT:**

**PROJECT:**

**HILLSIDE APARTMENTS  
LANDRIC HOMES  
ORLEANS, OTTAWA**

**DRAWING TITLE:**

**PRE DEVELOPMENT  
VEGETATION MAP**

**DATE:** 2020/12/21 **DRAWING NO.:**

**SCALE:** 1:200

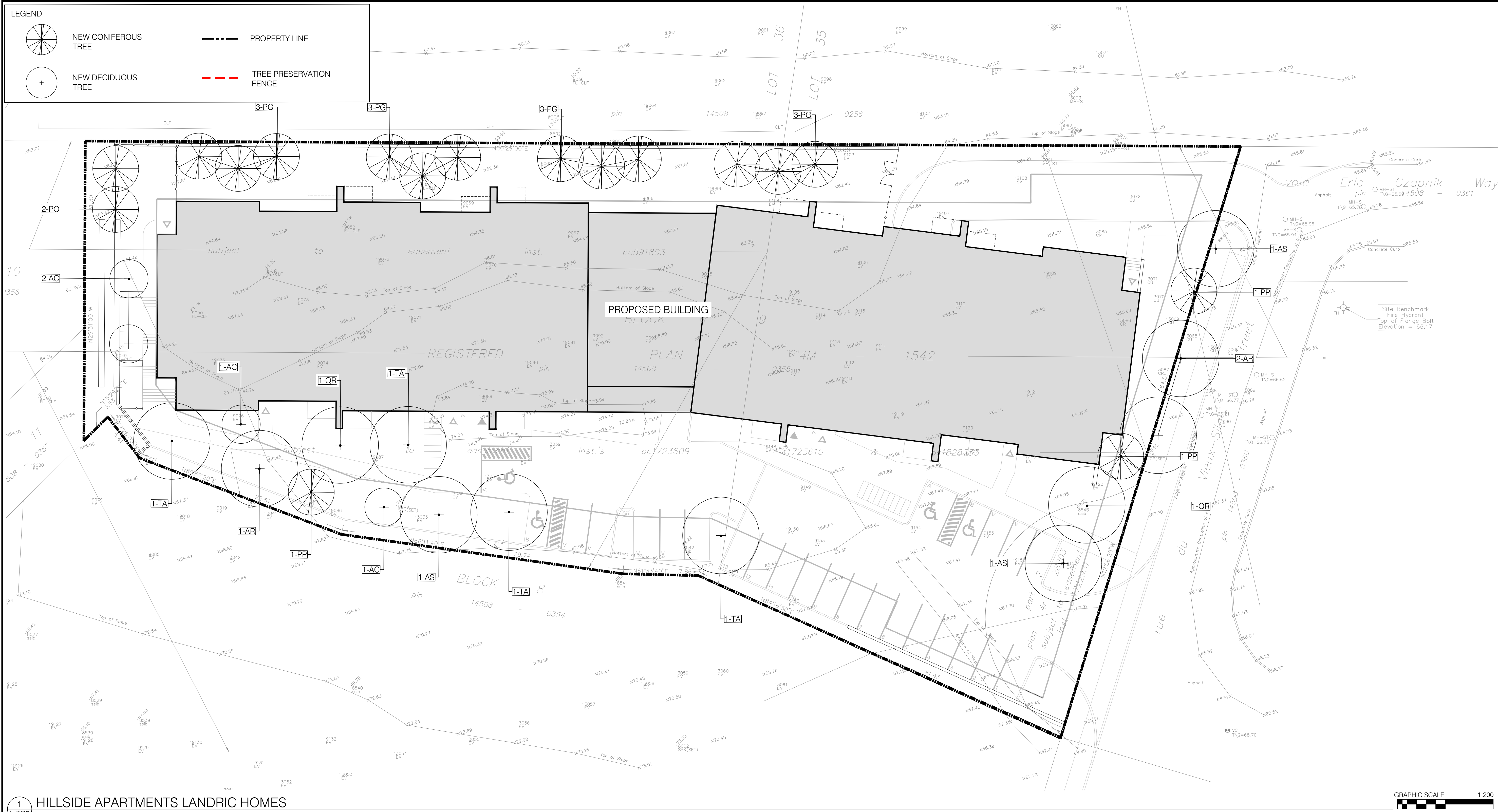
**DRAWN BY:** SX

**LA PROJECT NO.:** 20765-1 **L-TP1**

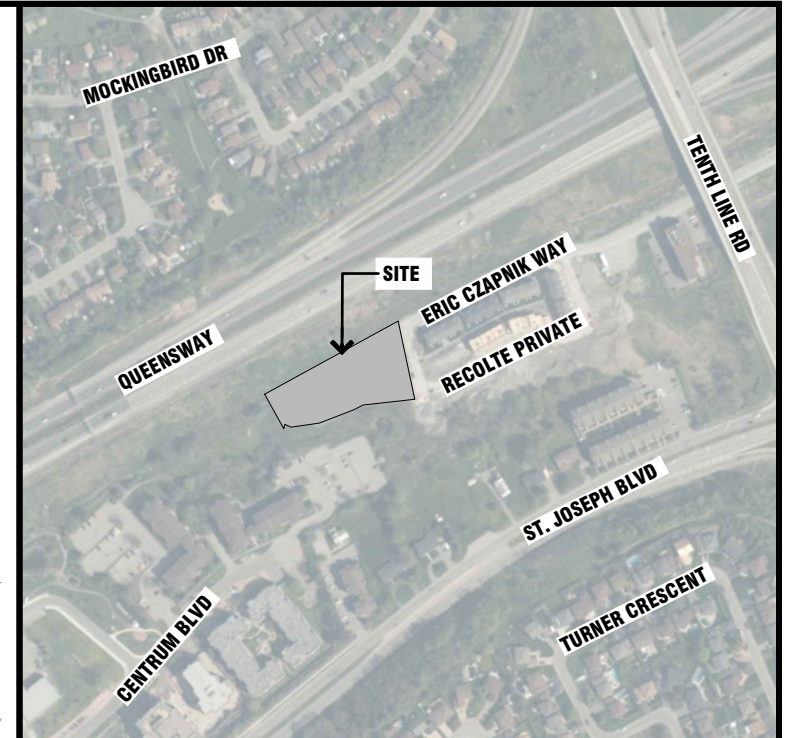
**HILLSIDE APARTMENTS LANDRIC HOMES TREES TO BE REMOVED**

NO.	TREE SPECIES	DBH (cm)	HEIGHT (m)	SPREAD (m)	CONDITION	COMMENTS
1	Colorado Spruce/Picea pungens	27	6	4	Good	
2	Colorado Spruce/Picea pungens	26	6	4	Good	
3	Colorado Blue Spruce/Picea pungens glauca	23	6	3	Good	
4	Basswood/Tilia americana	18,13	4	4	Fair	Partially buried by fill.
5	Basswood/Tilia americana	16,15	5	6	Fair	Twin stem
6	Basswood/Tilia americana	13,12	6	5	Fair	Twin stem
7	Basswood/Tilia americana	15	6	4	Good	
8	Basswood/Tilia americana	18	7	6	Good	
9	American Elm/Ulmus americana	18	6	5	Good	
10	American Elm/Ulmus americana	16	6	5	Good	
11	Basswood/Tilia americana	12,10	6	5	Fair	Twin stem
12	American Elm/Ulmus americana	22	7	7	Fair	Leaner
13	Basswood/Tilia americana	16	7	5	Good	
14	Basswood/Tilia americana	15	7	4	Good	
15	Basswood/Tilia americana	13,13	6	6	Fair	2 Stems joined at base
16	Basswood/Tilia americana	17	7	6	Good	
17	American Elm/Ulmus americana	30	8	8	Good	
18	American Elm/Ulmus americana	25	8	8	Good	





1 HILLSIDE APARTMENTS LANDRIC HOMES



KEY MAP, NTS

- L-TP2 GENERAL NOTES**
- All general site information and conditions compiled from architects and engineer's plans and surveys.
  - Do not scale this drawing.
  - Report any discrepancies prior to commencing work. No responsibility is born by the Landscape Architect for unknown subsurface conditions.
  - Reinstate all areas and items damaged as a result of construction activities to the satisfaction of the Landscape Architect.
  - Drawing may not be used for construction until signed by Landscape Architect as issued for construction.
  - The accuracy of the position of utilities is not guaranteed.
  - Individual utility co. must be contacted for confirmation of utility existence and location prior to digging.
  - This drawing is an instrument of service and requires the permission of the Landscape Architect for use. Copyright is reserved by the Landscape Architect, David M. Lashley.

3	2021/01/08	RE-ISSUED FOR SPA
2	2020-08-20	ISSUED FOR SPA
1	2020-04-21	ISSUED FOR REVIEW

<b>NO.</b>	<b>DATE</b>	<b>DESCRIPTION</b>
<b>SEAL:</b>		<b>NORTH:</b>

**LASHLEY + ASSOCIATES**  
LANDSCAPE ARCHITECTURE AND SITE ENGINEERING

200 CLARKESTONE AVENUE  
OTTAWA, ON K1T 6S6  
T 613 238 8679  
F 613 238 4201  
W LashleyLA.com  
E Mail@LashleyLA.com

**CONSULTANT:**

**PROJECT:**

**HILLSIDE APARTMENTS  
LANDRIC HOMES  
ORLEANS, OTTAWA**

**DRAWING TITLE:**

**POST DEVELOPMENT  
VEGETATION MAP**

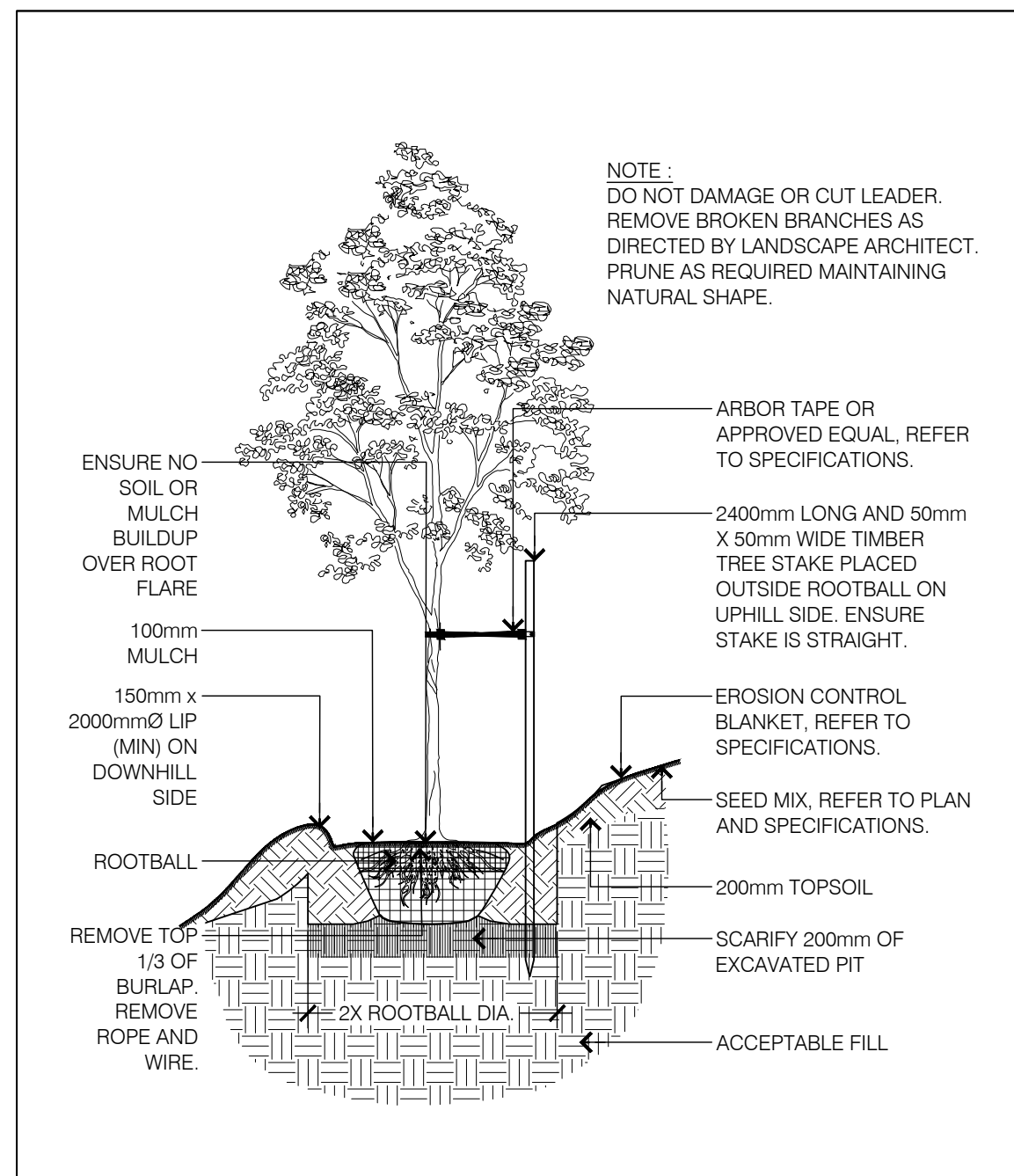
<b>DATE:</b>	2020/12/21	<b>DRAWING NO.:</b>	
<b>SCALE:</b>	1:200	<b>DRAWN BY:</b>	SX
<b>DRAWN BY:</b>	SX	<b>LA PROJECT NO.:</b>	20765-1

**PLANT LIST**

DICIDUOUS TREES						
KEY	QTY	BOTANICAL NAME	COMMON NAME	SPACING	SIZE	COMMENTS
AR	3	<i>Acer rubrum</i>	Red Maple	-	70 mm	W.B
AS	3	<i>Acer saccharum</i>	Sugar Maple	-	70 mm cal	W.B
AC	5	<i>Amelanchier canadensis (lamarckii)</i>	Shadblow Serviceberry	-	50 mm cal	Multistem
OR	2	<i>Quercus rubra</i>	Red oak	-	70 mm cal	W.B
TA	4	<i>Tilia americana</i>	Basswood	-	70 mm cal	W.B
CONIFEROUS TREES						
KEY	QTY	BOTANICAL NAME	COMMON NAME	SPACING	SIZE	COMMENTS
PG	14	<i>Picea glauca</i>	White Spruce	-	1.8 m ht.	W.B
PP	3	<i>Picea pungens</i>	Colorado Spruce	-	2.4 m ht.	W.B

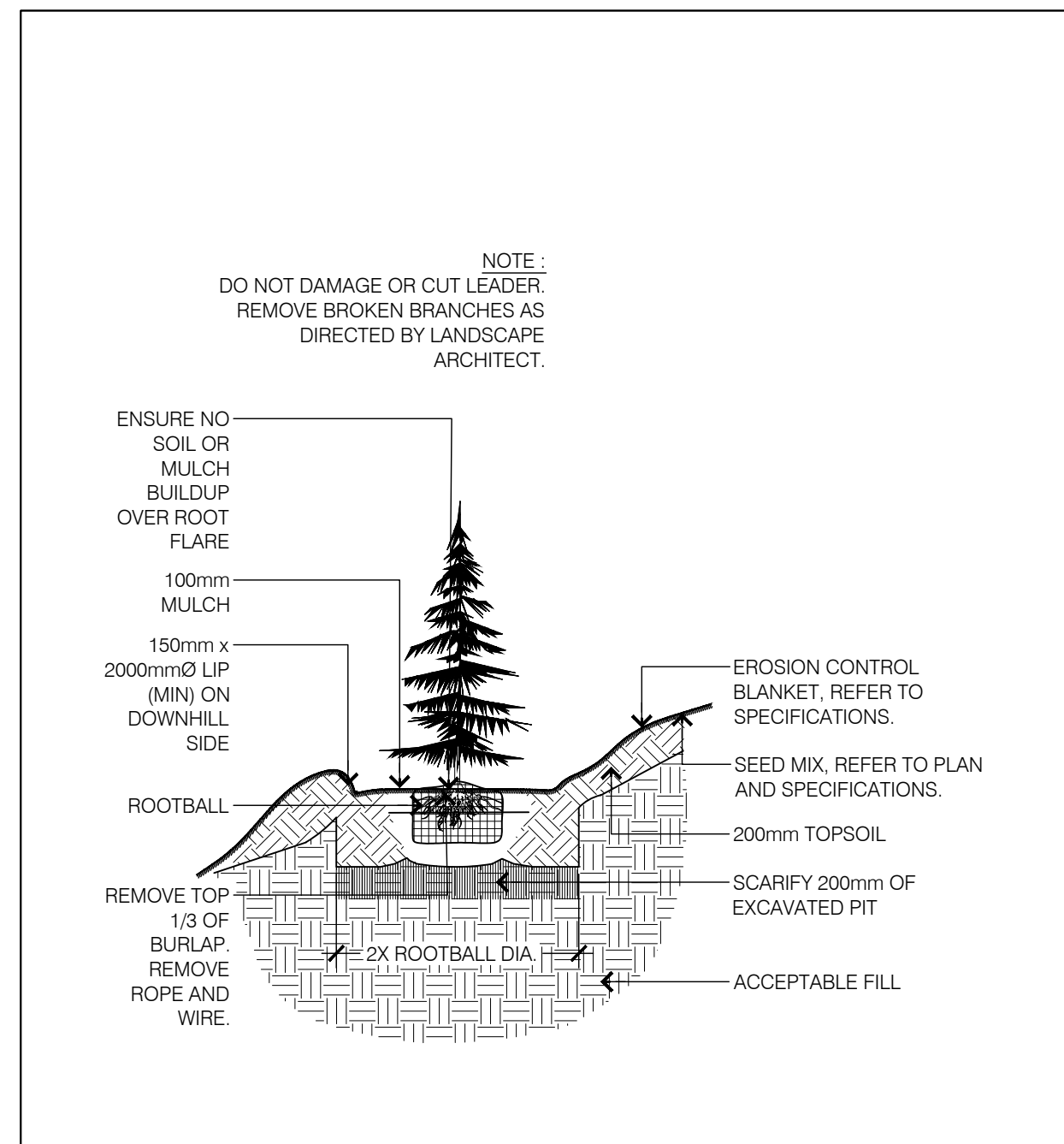






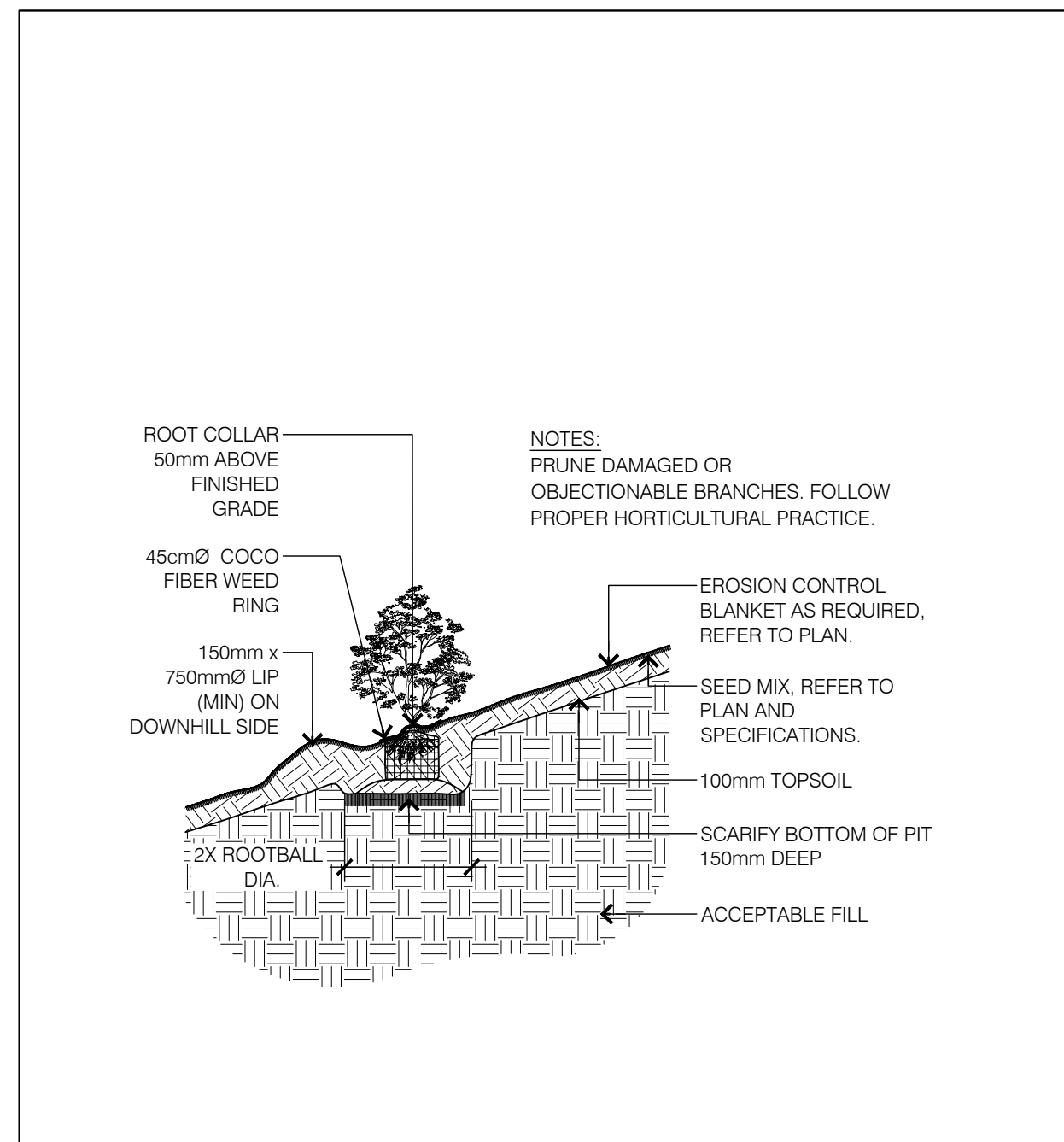
1 DECIDUOUS TREE PLANTING  
L101

NTS



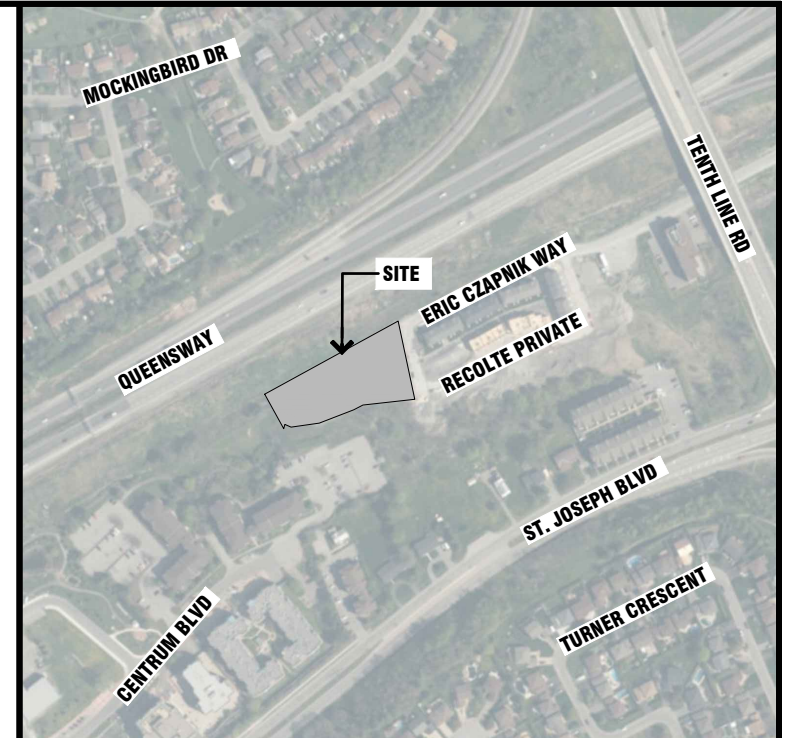
2 CONIFEROUS TREE PLANTING  
L101

NTS



3 SHRUB PLANTING  
L101

NTS



KEY MAP, NTS

3	2021/01/08	ISSUED FOR SPA
2	2020/06/03	ISSUED FOR REVIEW
1	2020/04/30	ISSUED FOR REVIEW

NO.	DATE	DESCRIPTION
-----	------	-------------

SEAL: NORTH:

**LASHLEY + ASSOCIATES**  
LANDSCAPE ARCHITECTURE AND SITE ENGINEERING  
202-800-6140  
1500-1500 CLARKE AVENUE  
OTTAWA, ON K1T 5G6  
T: 613 238 8670  
F: 613 238 6201  
W: LashleyLA.com  
E: Mail@LashleyLA.com

CONSULTANT:

PROJECT:  
**HILLSIDE APARTMENTS**  
**LANDRIC HOMES**  
ORLEANS, OTTAWA

DRAWING TITLE:  
**LANDSCAPE DETAILS**

DATE:	2020-12-22	DRAWING NO.:	
SCALE:	1:200		
DRAWN BY:	SX		
LA PROJECT NO.	20765-1	<b>L-101</b>	

D07-12-20-0104