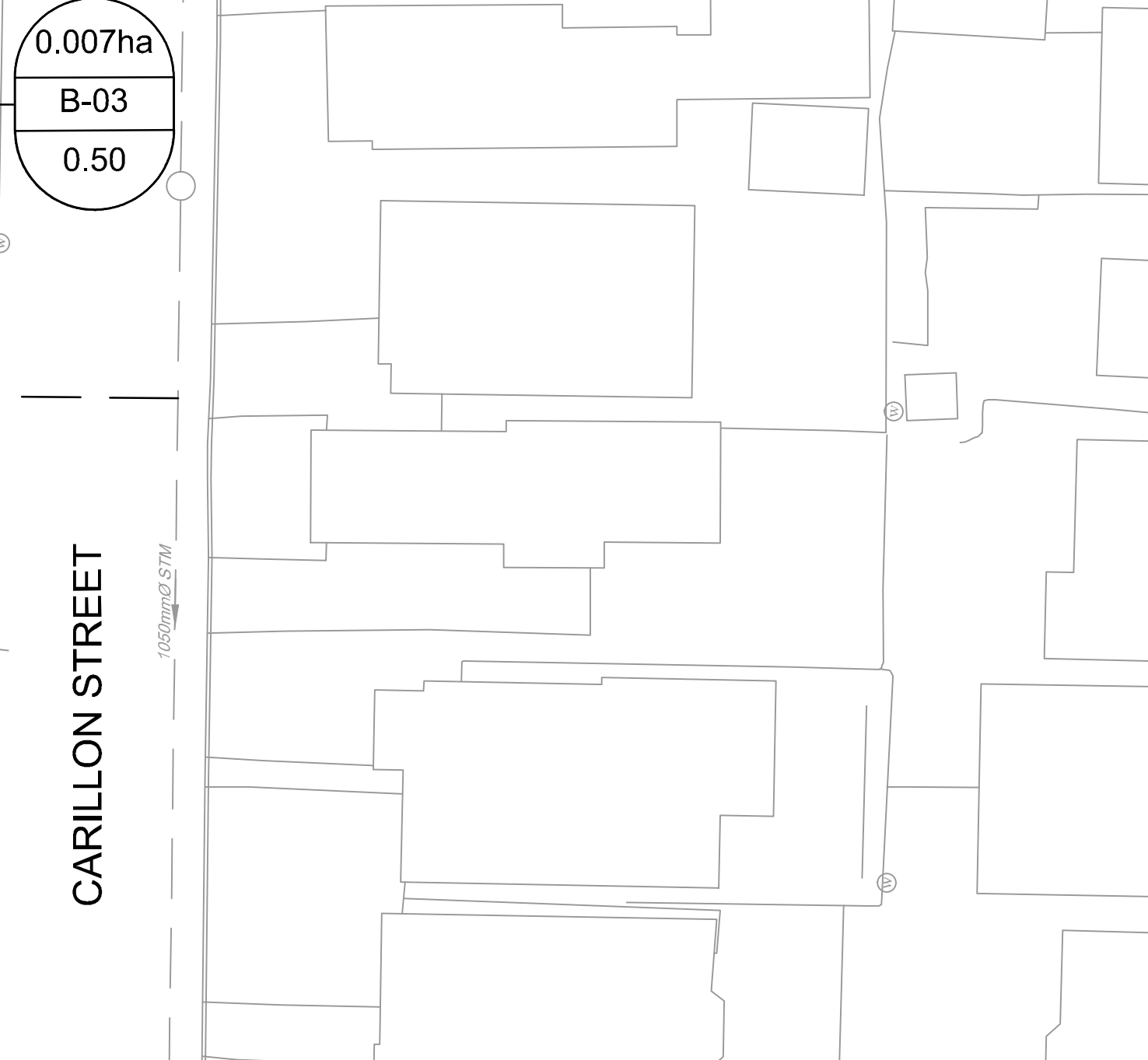


**LEGEND**

- 0.24 ha DRAINAGE AREA (hectares)
- A-1 AREA ID
- 0.85 RUN-OFF COEFFICIENT
- DRAINAGE BOUNDARY AREA
- MAX STATIC PONDING LIMITS
- 100-YR PONDING LIMITS
- 100-YR +20% PONDING LIMITS
- PROPOSED STORM MANHOLE & SEWER WITH DIRECTION OF FLOW
- EXISTING STORM MANHOLE & SEWER WITH DIRECTION OF FLOW
- CB1 PROPOSED ROAD CATCHBASIN WITH ICD
- EXISTING ROAD CATCHBASIN
- RYCB1 PROPOSED REAR YARD CATCHBASIN WITH ICD
- MAJOR SYSTEM FLOW ROUTE



**PONDING**

PONDING ID	STRUCTURE	100 YEAR PONDING ELEVATION	100 YEAR +20% PONDING DEPTH (m)	100 YEAR +20% PONDING ELEVATION	100 YEAR +20% PONDING DEPTH (m)	MAX STATIC PONDING ELEVATION	MAX STATIC PONDING DEPTH (m)
P1	CB1	56.66	0.23	56.72	0.29	56.58	0.15
P2	CB2	56.63	0.25	56.70	0.32	56.53	0.15
P3	CB3	56.58	0.15	56.67	0.24	56.58	0.15
P4	CB4	56.63	0.13	56.73	0.23	56.65	0.15
P5	CB5	56.72	0.16	56.78	0.22	56.71	0.15
P6	CB6	59.70	0.22	56.75	0.27	56.63	0.15
P7	CB7	56.72	0.15	56.77	0.20	56.72	0.15
P8	CB8	56.76	0.21	56.80	0.25	56.70	0.15
P9	CB9	56.76	0.15	56.81	0.20	56.76	0.15
P10	CB10	56.83	0.20	56.86	0.23	56.78	0.15
P11	CB11	56.88	0.19	56.89	0.22	56.82	0.15
P12	CB12	56.48	0.10	56.64	0.26	56.50	0.12
P13	RYCB4	55.89	0.24	55.93	0.28	55.90	0.25
P14	LCB2	55.89	0.24	55.91	0.26	55.80	0.15
P15	LCB3	55.84	0.29	55.88	0.33	55.75	0.20
P16	LCB4	55.89	0.19	55.78	0.28	55.70	0.20
P17	LCB5	55.66	0.21	55.73	0.28	55.65	0.20
P18	RYCB5	55.61	0.36	55.71	0.46	55.50	0.25
P19	RYCB6	55.65	0.24	55.82	0.41	55.65	0.24
P20	RYCB3	55.85	0.28	55.87	0.28	55.75	0.16
P21	LCB1	55.86	0.20	55.88	0.22	55.85	0.19

**CATCHBASIN TABLE**

CB ID	T/G ELEVATION	INVERT	I.C.D.
CB1	56.43	54.73	TEMPEST LMF (VORTEX 85)
CB2	56.38	54.68	TEMPEST LMF (VORTEX 85)
CB3	56.43	54.73	TEMPEST LMF (VORTEX 85)
CB4	56.50	54.80	TEMPEST LMF (VORTEX 77)
CB5	56.56	54.86	TEMPEST LMF (VORTEX 77)
CB6	56.48	54.78	TEMPEST LMF (VORTEX 77)
CB7	56.57	54.84	TEMPEST LMF (VORTEX 77)
CB8	56.55	54.85	TEMPEST LMF (VORTEX 77)
CB9	56.61	54.88	TEMPEST LMF (VORTEX 77)
CB10	56.63	54.93	TEMPEST LMF (VORTEX 77)
CB11	56.67	54.94	TEMPEST LMF (VORTEX 77)
CB12	56.38	54.65	TEMPEST LMF (VORTEX 77)
RYCB1	54.79	53.69	TEMPEST LMF (VORTEX 73)
RYCB3	55.59	54.03	TEMPEST LMF (VORTEX 87)
RYCB5	55.25	54.02	-
RYCB6	55.41	53.75	TEMPEST LMF (VORTEX 87)

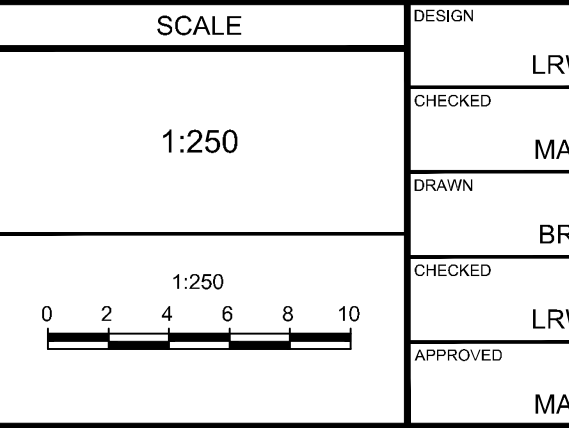
**STORM MANHOLE TABLE**

MANHOLE ID	SIZE (mm)	T/G ELEV (m)	INVERT (m)	PIPE DIAMETER (mm)
2	1200	56.47	E=52.90 W=52.82 N=55.02	E=375 W=450 N=200
4	1200	56.52	W=52.88 N=53.04	W=375 N=375
6	1200	56.42	S=52.27 E=52.34 N=52.42	S=525 E=450 N=375
8	1200	56.48	N=52.80 S=52.73	N=300 S=375
10	1200	56.58	N=53.06 S=53.06 W=53.50	N=300 S=300 W=300
12	1200	56.73	E=54.41 S=53.47	E=200 S=300
14	1200	56.50	N=53.19 S=53.18 W=53.31	N=375 S=375 W=250
RYCB1	1200	56.62	N=53.41 S=53.34 W=53.46	N=300 S=375 W=250
RYCB3	1500	56.50	N=52.10 W=54.27 E=52.09	N=525 W=200 E=525
20	1200	55.52	S=51.99 W=51.99 E=53.77	S=525 W=525 E=250
22	1200	56.63	E=53.51 W=53.09	E=250 W=200

NOTE: THE POSITION OF ALL POLE LINES, CONDUITS, WATERMANS, SEWERS AND OTHER UNDERGROUND AND OVERGROUND UTILITIES AND STRUCTURES IS NOT NECESSARILY SHOWN ON THE CONTRACT DRAWINGS, AND WHERE SHOWN, THE ACCURACY OF THE POSITION OF SUCH UTILITIES AND STRUCTURES IS NOT GUARANTEED. BEFORE STARTING WORK, DETERMINE THE EXACT LOCATION OF ALL SUCH UTILITIES AND STRUCTURES AND ASSUME ALL LIABILITY FOR DAMAGE TO THEM.

**REVISION**

No.	REVISION	DATE	BY
5.	CITY SUBMISSION	FEB 5/21	MAB
4.	STORM OUTLET VIA 127 CARILLON	OCT 23/20	MAB
3.	SITE PLAN APPLICATION	AUG 24/20	MAB
2.	RVCA APPROVAL IN PRINCIPAL APPLICATION	MAY 28/20	MAB
1.	ISSUED FOR RVCA REVIEW	MAR 26/20	MAB



**FOR REVIEW ONLY**

SCALE: 1:250

DESIGN: LRW

CHECKED: MAB

DRAWN: BRP

CHECKED: LRW

APPROVED: MAB

**NOVATECH**

Engineers, Planners & Landscape Architects

Suite 200, 240 Michael Copland Drive  
Ottawa, Ontario, Canada K2M 1P6

Telephone: (613) 254-9643  
Facsimile: (613) 254-5867  
Website: www.novatech-eng.com

**CITY OF OTTAWA**  
200 BARIBEAU STREET

DRAWING NAME: STORM DRAINAGE AREA PLAN

PROJECT No.: 119068

REV # 5

DRAWING No.: 119068-STM