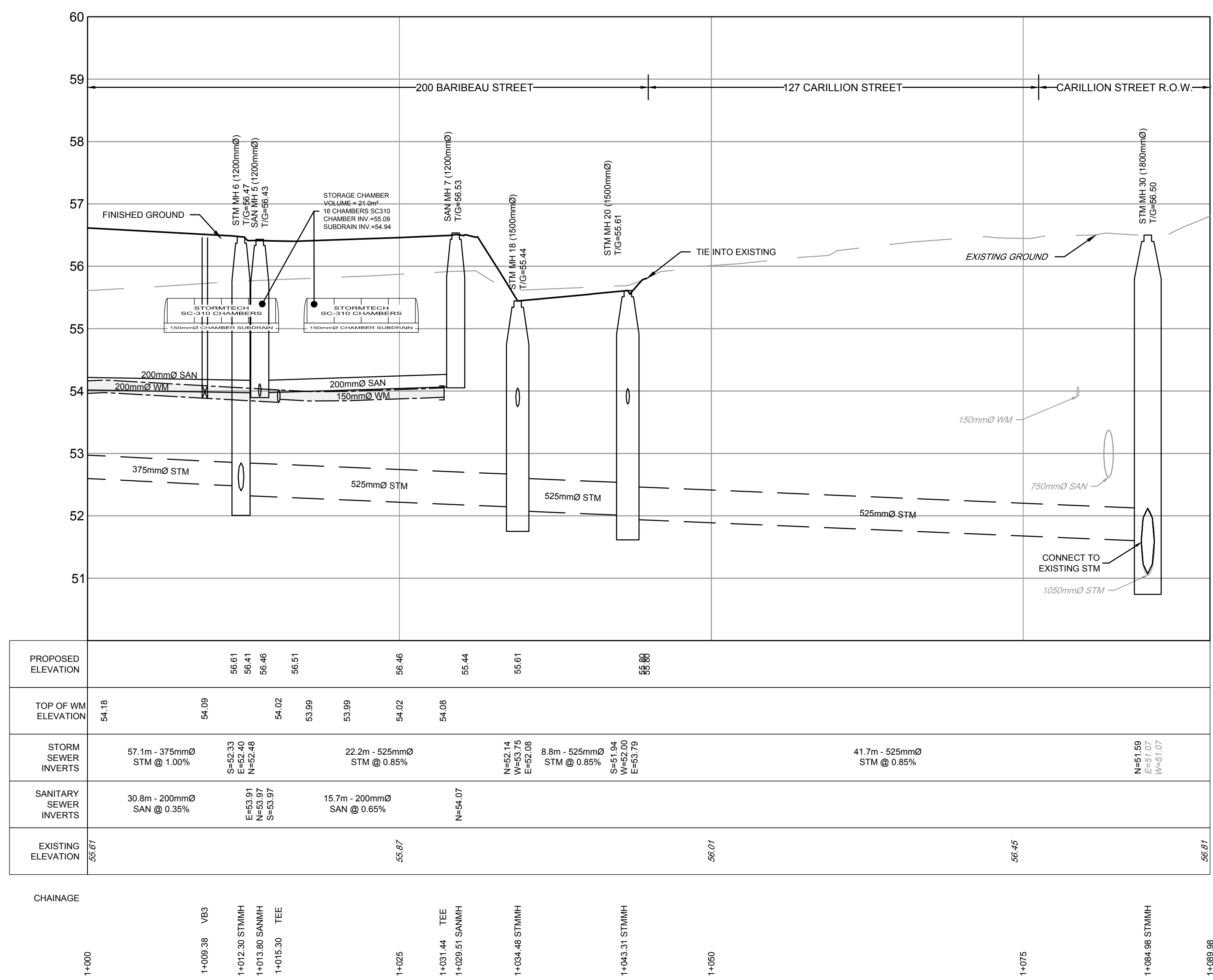


STORM OUTLET VIA 127 CARILLON

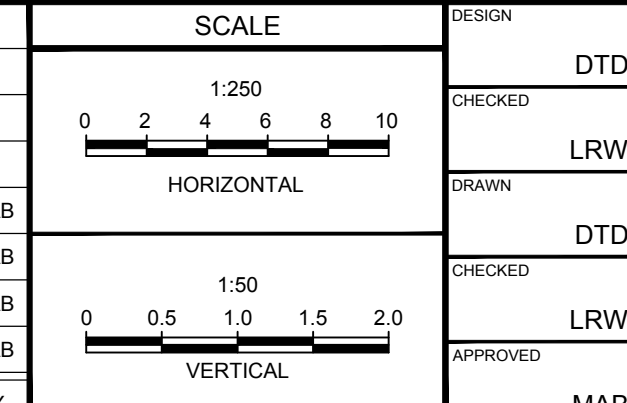


NOTE:
THE POSITION OF ALL POLE LINES, CONDUITS,
WATERMANS, SEWERS AND OTHER
UNDERGROUND AND OVERGROUND UTILITIES AND
STRUCTURES IS NOT NECESSARILY SHOWN ON
THE CONTRACT DRAWINGS, AND WHERE SHOWN,
THE ACCURACY OF THE POSITION OF SUCH
UTILITIES AND STRUCTURES IS NOT GUARANTEED.
BEFORE STARTING WORK, DETERMINE THE EXACT
LOCATION OF ALL SUCH UTILITIES AND
STRUCTURES AND ASSUME ALL LIABILITY FOR
DAMAGE TO THEM.



NO.	REVISION	DATE	BY
4.	CITY SUBMISSION	AUG 3/21	MAB
3.	CITY SUBMISSION	JUN 8/21	MAB
2.	CITY SUBMISSION	FEB 5/21	MAB
1.	STORM OUTLET VIA 127 CARILLON	OCT 29/20	MAB

NO.	REVISION	DATE	BY
4.	CITY SUBMISSION	AUG 3/21	MAB
3.	CITY SUBMISSION	JUN 8/21	MAB
2.	CITY SUBMISSION	FEB 5/21	MAB
1.	STORM OUTLET VIA 127 CARILLON	OCT 29/20	MAB



FOR REVIEW ONLY

DESIGN: DTD
CHECKED: LRW
DRAWN: DTD
CHECKED: LRW
APPROVED: MAB

PROFESSIONAL ENGINEER
L.R. WILSON
10160065
PROVINCE OF ONTARIO

PROFESSIONAL ENGINEER
M.A. BISSETT
2021.08.05
PROVINCE OF ONTARIO

NOVATECH
Engineers, Planners & Landscape Architects
Suite 200, 240 Michael Cowpland Drive
Ottawa, Ontario, Canada K2M 1P6
Telephone: (613) 254-9643
Facsimile: (613) 254-5867
Website: www.novatech-eng.com

CITY OF OTTAWA
200 BARIBEAU STREET

PLAN AND PROFILE
STORM OUTLET VIA 127 CARILLON
1+000 TO 1+090

PROJECT NO.	119068
REV	REV #4
DRAWING NO.	119068-PR1