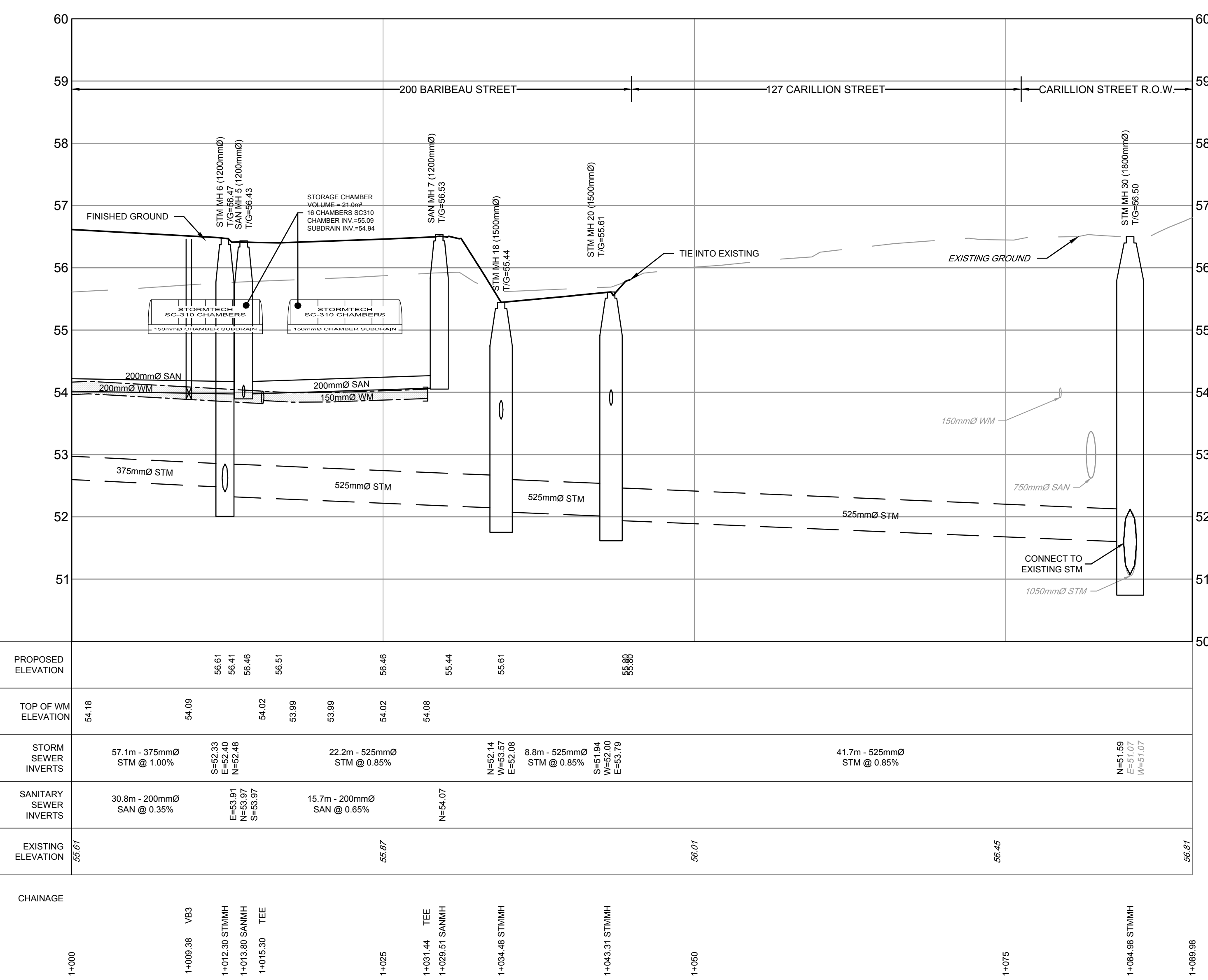


STORM OUTLET VIA 127 CARILLION



C:\Users\119068\OneDrive\Documents\119068\PR1.ctb, Oct 21, 2021, 2:25pm, ddbfba

NOTE:
THE POSITION OF ALL POLE LINES, CONDUITS, WATERMANS, SEWERS AND OTHER UNDERGROUND AND OVERGROUND UTILITIES AND STRUCTURES IS NOT NECESSARILY SHOWN ON THE CONTRACT DRAWINGS, AND WHERE SHOWN, THE ACCURACY OF THE POSITION OF SUCH UTILITIES AND STRUCTURES IS NOT GUARANTEED. BEFORE STARTING WORK, DETERMINE THE EXACT LOCATION OF ALL SUCH UTILITIES AND STRUCTURES AND ASSUME ALL LIABILITY FOR DAMAGE TO THEM.



NO.	REVISION	DATE	BY
6.	ISSUED FOR ECA	MAR 24/22	MAB
5.	CITY SUBMISSION	OCT 21/21	MAB
4.	CITY SUBMISSION	AUG 3/21	MAB
3.	CITY SUBMISSION	JUN 8/21	MAB
2.	CITY SUBMISSION	FEB 5/21	MAB
1.	STORM OUTLET VIA 127 CARILLION	OCT 29/20	MAB

SCALE
HORIZONTAL 0 2 4 6 8 10 1:250
VERTICAL 0 0.5 1.0 1.5 2.0 1:50

CHKD BY	DATE	SCALE
DTD		
LRW		
DTD		
LRW		
MAB		

FOR REVIEW ONLY

NOVATECH
Engineers, Planners & Landscape Architects
Suite 200, 240 Michael Cowpland Drive
Ottawa, Ontario, Canada K2M 1P6
Telephone: (613) 254-9643
Facsimile: (613) 254-5867
Website: www.novatech-eng.com

CITY OF OTTAWA
DOMINION VILLAGE - 200 BARIBEAU STREET

PLAN AND PROFILE
STM OUTLET VIA 127 CARILLION
1+000 TO 1+090

PROJECT NO.	119068
REV	REV #5
DRAWING NO.	119068-PR1