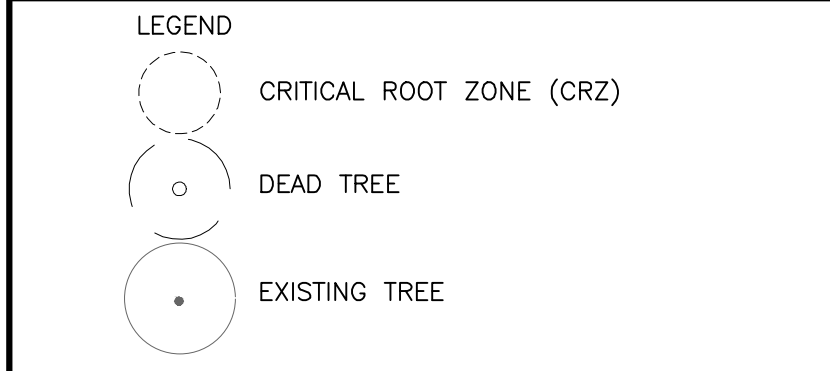
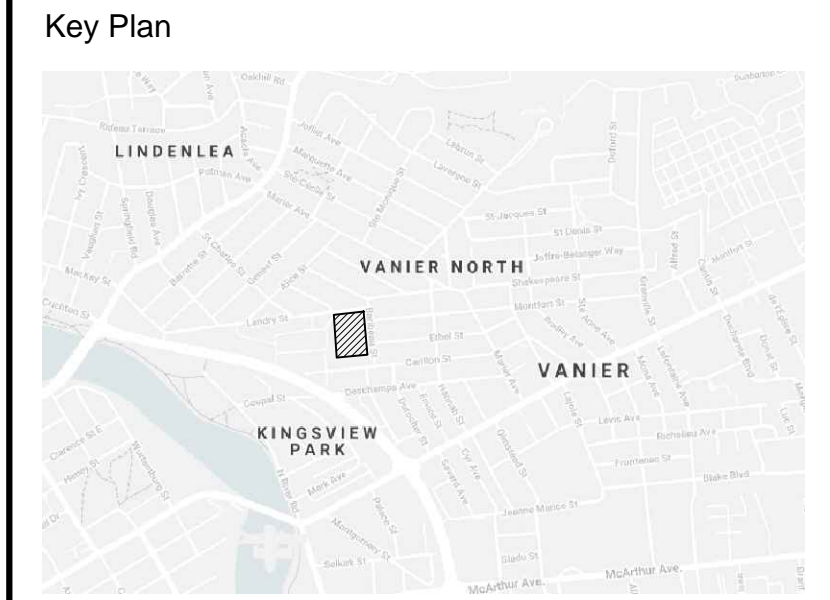




Tree #	Botanical Name	Common Name	Caliper (cm)	Condition	High Quality Tree	Rare Tree	Comments	Disposition
1	Tilia cordata	Littleleaf Linden	40	Moderate	No	No	City owned. Symmetrical canopy. Pruned @ OH Utilities. Single stem, Co-dominant leaders: 2 @ -2m above grade, Included bark, Suckering @ base	Remove
2	Tilia cordata	Littleleaf Linden	32	Good	No	No	City owned. Symmetrical canopy, Co-dominant leaders: 2 @ -2m above grade, Included bark	Remove
3	Tilia cordata	Littleleaf Linden	24	Moderate	No	No	City owned. Asymmetrical canopy, Die back -10% @ branches, Single stem, Included bark	Remove
4	Ulmus pumila	Siberian Elm	35	Moderate	No	No	Privately owned. Asymmetrical canopy, Pruned @ OH Utilities, Poor branch angle, Single stem, Co-dominant leaders: 2 @ -2.5m above grade	Remove
5	Ulmus pumila	Siberian Elm	45	Moderate	No	No	Privately owned. Asymmetrical canopy, Broken limbs, Pruned @ OH Utilities, Single stem, Co-dominant leaders: 3 @ -2m above grade, Bark rot @ limbs	Remove
6	Thuja nigra	Black Cedar	15, 17	Good	No	No	Privately owned, Asymmetrical canopy, Multi stem: 2	Remove
7				Dead				Remove
8	Acer ginnala	Amur Maple	23, 25, 20	Moderate	No	No	Privately owned, Asymmetrical canopy, Pruned leader branches, Multi stem: 3, Heart rot @ trunk, Broken leader	Remove
9	Thuja nigra	Black Cedar	15	Poor	No	No	Privately owned, Die back: -40% @ canopy, Single stem, Co-dominant leaders: 3 @ -0.5m above grade, Bark damage	Remove
10	Acer saccharum	Sugar Maple	32	Good	No	No	Privately owned, Symmetrical canopy, Broken limbs, Single stem, Bark rot @ crotches, Included bark	Remove
11	Acer ginnala	Amur Maple	18, 24, 15, 12	Moderate	No	No	Privately owned, Symmetrical canopy, Pruned leader, Multi stem: 4, Bark rot @ limbs, Existing feature: Bird house	Remove
12	Acer rubrum	Red Maple	68	Moderate	No	No	Privately owned, Broken limbs, Pruned, Heart & Bark rot @ limbs, large split in limb.	Remove
13	Thuja nigra	Black Cedar	18	Moderate	No	No	Privately owned, Asymmetrical canopy, Single stem, Co-dominant leaders: 2 @ -1.5m above grade, Leaning	Remove
14	Acer ginnala	Amur Maple	15, 12, 12	Moderate	No	No	Privately owned, Symmetrical canopy, Multi stem: 3	Remove
15			23	Dead				Remove
16	Acer saccharum	Sugar Maple	72	Poor	No	No	Privately owned, Asymmetrical canopy, Pruned @ OH Utilities, Poor branch angle, Single stem, Co-dominant leaders: 2 @ 2.5m above grade, Bark rot @ trunk & crotches	Retain
17				Missing				
18	Acer negundo	Manitoba Maple	50	Poor	No	No	Privately owned by adjacent homeowner, Pruned @ OH Utilities, Poor branch angle, Multi stem: 5, Bark rot @ trunk, Included bark	Retain
19				Missing				
20				Missing				
21	Acer negundo	Manitoba Maple	40, 20	Moderate	No	No	Privately owned by adjacent homeowner, Asymmetrical canopy, Broken limbs, Poor branch angle, Multi stem: 2, Bark rot @ limbs, Included bark	Retain
22	Rhamnus cathartica	Common Buckthorn	12, 20, 18		No	No	Privately owned by adjacent homeowner, Bush	Retain
23	Populus balsamifera	Balsam Poplar	27, 23	Moderate	No	No	Privately owned, Symmetrical canopy, Single stem, Co-dominant leaders: 2 @ -1.5m above grade, grown into chain link fence	Retain
24	Populus balsamifera	Balsam Poplar	35	Good	No	No	Privately owned, Symmetrical canopy, Single stem, Included bark	Remove
25	Ulmus pumila	Siberian Elm	23	Moderate	No	No	City owned: Park property, Symmetrical canopy, Pruned @ lower limbs, Single stem, Bark rot @ crotches, Grown into chain link fence	Retain
26	Ulmus pumila	Siberian Elm	>10 (4)	Poor	No	No	City owned: Park property, Symmetrical canopy, Pruned @ main leader, Single stem, Co-dominant leaders: 4 @ -0.5m above grade, Grown into chain link fence	Retain
27	Gleditsia triacanthos var. inermis	Thornless Honey Locust	14	Good	No	No	City owned: Park property, Symmetrical canopy, Single stem, Co-dominant leaders: 2 @ -1.5m above grade, Bark rot @ crotches	Retain
28	Picea glauca	White Spruce	12	Good	No	No	City owned: Park property, Symmetrical canopy, Single stem	Retain
29	Acer platanoides	Norway Maple	20	Good	No	No	Privately owned by adjacent homeowner, Symmetrical canopy, Single stem	Retain
30				Dead				Remove
31	Acer Saccharum	Sugar Maple	24	Good	No	No	Privately owned, Symmetrical canopy, Single stem, Bark rot @ limbs, Included bark	Remove
32				Dead				Remove

SITE DESCRIPTION:

- THE EXISTING SITE CONTAINS TWO SINGLE-STOREY BRICK BUILDINGS, A LARGE ASPHALT-PAVED AREA, AN OPEN GRASS FIELD, AND A SAND-PLAY AREA.
 - APPROXIMATELY 85m² IS OCCUPIED BY BUILDING FOOTPRINTS.
 - APPROXIMATELY 5685m² IS HARD SURFACES.
- THERE ARE A TOTAL OF THIRTY-TWO TREES INCLUDED IN THE TREE CONSERVATION REPORT, IN VARYING CONDITIONS. TREES ARE LOCATED WITHIN THE SITE BOUNDARY, WITHIN THE CITY RIGHT-OF-WAY, WITHIN AN ADJACENT CITY PARK, AND ON ADJACENT HOMEOWNER PROPERTY.
- THE EXISTING ON-SITE GREENSPACE IS MAINLY COMPRISED OF TURFGRASS.
- THE DEVELOPMENT SITE IS NOT CONSIDERED OF PRIMARY OR SUPPORTING SIGNIFICANCE AS NATURAL LANDS IN THE GREENSPACE MASTER PLAN.



No.	Revision	Date
4	ISSUED FOR SPA	12 FEB 2021
3	ISSUED FOR SPA	17 JULY 2020
2	ISSUED FOR REZONING	02 APR 2020
1	DRAFT TREE CONSERVATION REPORT	18 FEB 2020

North:

Stamp:

CSW Landscape Architecture
 Urban Design
 Site Planning
 Recreation and Park Planning
 Project Management

319 McRae Avenue, Suite 502, Ottawa, Ontario, K1Z 0B9
 Tel: (613) 729-4536

- All measurements in millimeters unless specified otherwise. Do not scale drawing. All drawings to be read in conjunction with written specifications.
- Copyright reserved. This drawing is the exclusive property of CSW Landscape Architects Ltd. and shall not be used without the consent thereof.
- This Drawing may not be used for construction until signed by the landscape architect. It is the responsibility of the contractor to:
 - check and verify all dimensions on site;
 - report all errors and/or omissions to the landscape architect;
 - comply with all pertinent codes and by-laws;
 - check and verify locations of all underground services with all local utilities prior to any digging.

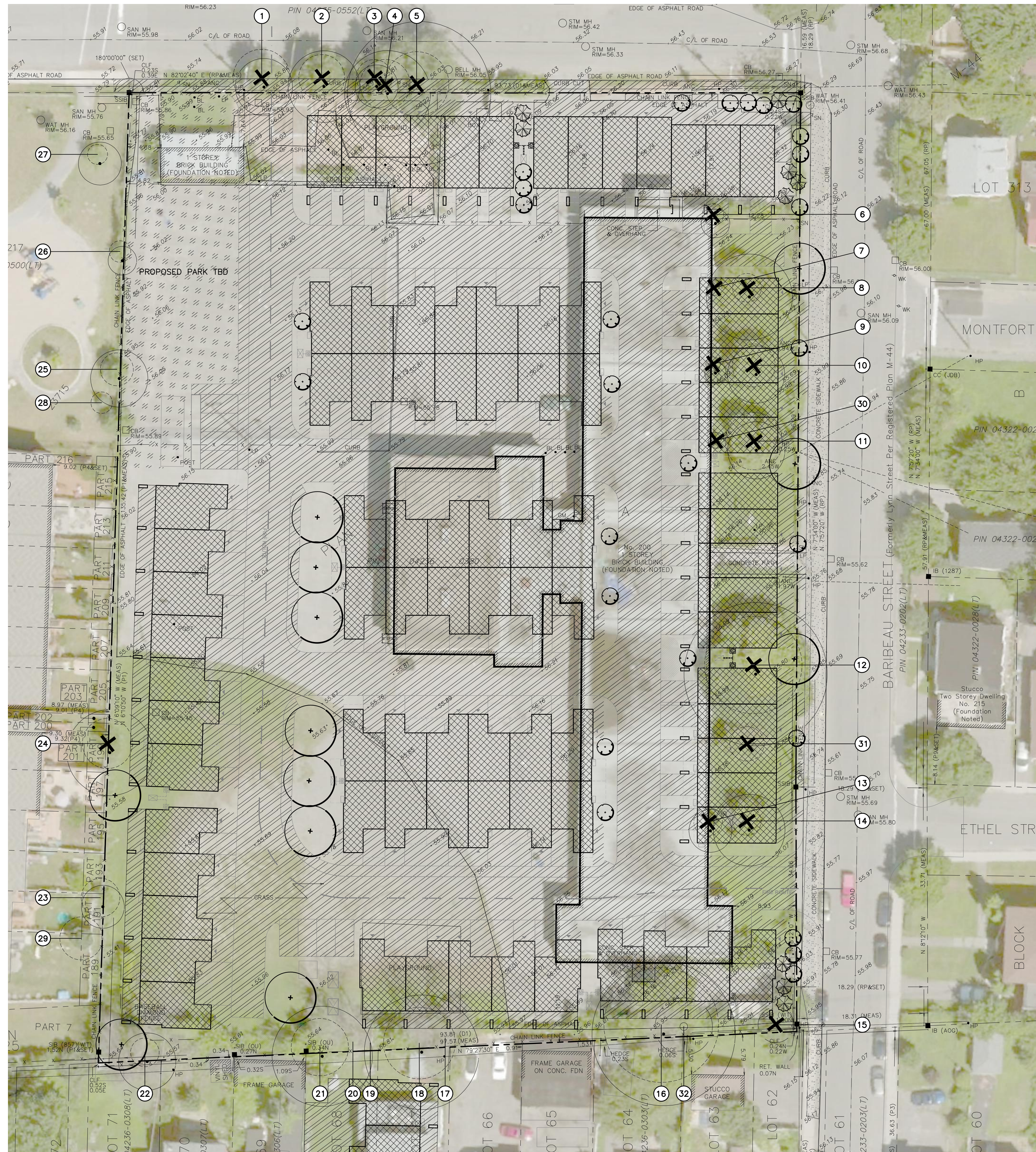
Project:
200 BARIBEAU STREET RESIDENTIAL DEVELOPMENT
 200 BARIBEAU STREET
 OTTAWA, ONTARIO

Drawing:
TREE CONSERVATION REPORT

Scale: 1:300	Date: 28 FEB, 2020
Design By: PG	Drawn By: PG
Project Number: 2053-01	Sheet Number: TCR 01

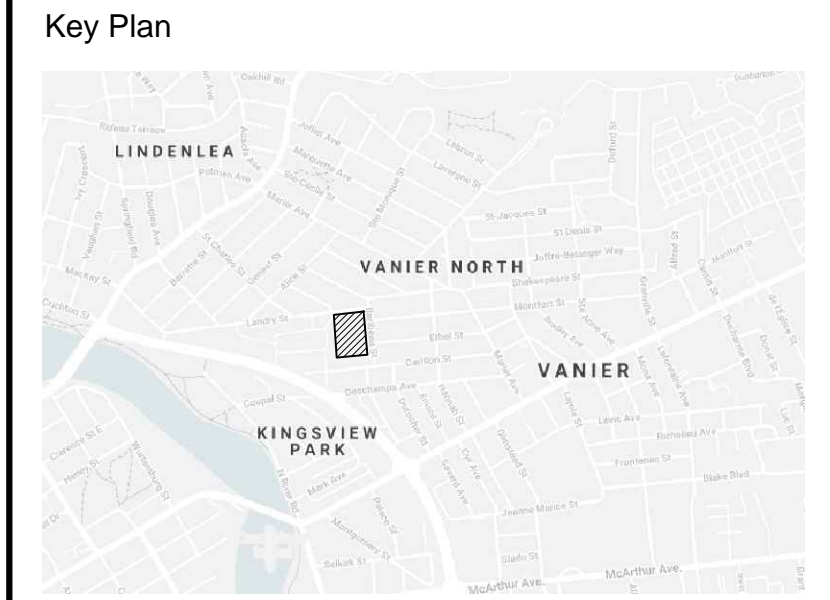


L:\01 Save: 2021-03-22 10:26:55 AM
 File Location: Z:\Projects\2053-01 200 Baribeau Street\Drawings\TCR\2053-01 200 Baribeau Street_TCR_04_Tree Conservation Report.dwg



2 PROPOSED DEVELOPMENT & CONSERVED VEGETATION

Scale: 1:300



LEGEND

- CRITICAL ROOT ZONE (CRZ)
- EXISTING TREE TO REMAIN
- EXISTING TREE TO BE REMOVED
- DEAD TREE
- PROPOSED DECIDUOUS TREES
- PROPOSED CONIFEROUS TREES
- PROPOSED BUILDING / STRUCTURE
- PROPOSED HARD / IMPERMEABLE SURFACE

No.	Revision	Date
4	ISSUED FOR SPA	12 FEB 2021
3	ISSUED FOR SPA	17 JULY 2020
2	ISSUED FOR REZONING	02 APR 2020
1	DRAFT TREE CONSERVATION REPORT	18 FEB 2020

North:

Stamp:

CSW Landscape Architecture
 Urban Design
 Site Planning
 Recreation and Park Planning
 Project Management

319 McRae Avenue, Suite 502, Ottawa, Ontario, K1Z 0B9
 Tel: (613) 729-4536

- All measurements in millimeters unless specified otherwise. Do not scale drawing. All drawings to be read in conjunction with written specifications.
- Copyright reserved. This drawing is the exclusive property of CSW Landscape Architects Ltd. and shall not be used without the consent thereof.
- This Drawing may not be used for construction until signed by the landscape architect. It is the responsibility of the contractor to:
 - check and verify all dimensions on site;
 - report all errors and/or omissions to the landscape architect;
 - comply with all pertinent codes and by-laws;
 - check and verify locations of all underground services with all local utilities prior to any digging.

Project:
**200 BARIBEAU STREET
 RESIDENTIAL DEVELOPMENT**

200 BARIBEAU STREET
 OTTAWA, ONTARIO

Drawing:
**TREE CONSERVATION
 REPORT**

Scale:	1:300	Date:	
Design By:	SMc	Drawn By:	SMc
Project Number:	2053-01	Sheet Number:	TCR 02