

- LEGEND**
- X REMOVALS
  - TERRAFIX SILT SOXX INSTALLED AT CATCH BASIN
  - EXISTING GROUND CONTOUR AND LABEL
  - SILT FENCE PER OPSPD 219.110

- EROSION AND SEDIMENT CONTROL NOTES:**
1. ALL EROSION AND SEDIMENT CONTROLS ARE TO BE INSTALLED TO THE SATISFACTION OF THE ENGINEER, THE MUNICIPALITY AND THE CONSERVATION AUTHORITY. THEY ARE TO BE APPROPRIATE TO THE SITE CONDITIONS, PRIOR TO UNDERTAKING ANY SITE ALTERATIONS (FILLING, GRADING, REMOVAL OF VEGETATION, ETC.) AND DURING ALL PHASES OF SITE PREPARATION AND CONSTRUCTION. THESE PRACTICES ARE TO BE IMPLEMENTED IN ACCORDANCE WITH THE CURRENT BEST MANAGEMENT PRACTICES FOR EROSION AND SEDIMENT CONTROL AND SHOULD INCLUDE AS A MINIMUM THOSE MEASURES INDICATED ON THE PLAN.
  2. TO PREVENT SURFACE EROSION FROM ENTERING THE STORM SYSTEM DURING CONSTRUCTION, FILTER SOCKS WILL BE PLACED UNDER GRATES OF ALL PROPOSED AND EXISTING CATCHBASINS AND STRUCTURES. THESE CONTROL MEASURES WILL REMAIN IN PLACE UNTIL VEGETATION HAS BEEN ESTABLISHED AND CONSTRUCTION COMPLETE.
  3. THE CONTRACTOR SHALL INSTALL MUD MATS AT ALL SITE ENTRANCES (100mm GRANULAR 'B' TYPE II).
  4. THE SEDIMENT CONTROL MEASURES SHALL ONLY BE REMOVED WHEN, IN THE OPINION OF THE ENGINEER, THE MEASURES ARE NO LONGER REQUIRED. NO CONTROL MEASURES MAY BE PERMANENTLY REMOVED WITHOUT PRIOR AUTHORIZATION FROM THE ENGINEER.
  5. THE CONTRACTOR SHALL IMMEDIATELY REPORT TO THE ENGINEER ANY ACCIDENTAL DISCHARGES OF SEDIMENT MATERIAL INTO ANY DITCH OR STORM SEWER SYSTEM. APPROPRIATE RESPONSE MEASURES, INCLUDING ANY REPAIRS TO EXISTING CONTROL MEASURES OR THE IMPLEMENTATION OF ADDITIONAL CONTROL MEASURES, SHALL BE CARRIED OUT BY THE CONTRACTOR WITHOUT DELAY.
  6. THE CONTRACTOR ACKNOWLEDGES THAT FAILURE TO IMPLEMENT EROSION AND SEDIMENT CONTROL MEASURES MAY BE SUBJECT TO PENALTIES IMPOSED BY ANY APPLICABLE REGULATORY AGENCY.
  7. THE CONTRACTOR SHALL ENSURE PROPER DUST CONTROL IS PROVIDED WITH THE APPLICATION OF WATER (AND IF REQUIRED, CALCIUM CHLORIDE) DURING DRY PERIODS.
  8. THE CONTRACTOR SHALL PROTECT ALL SURVEY MONUMENTS.
  9. ALL TOPSOIL AND ANY SOFT, WET OR DELETERIOUS MATERIAL SHALL BE REMOVED FROM IMPROVED AREAS UNLESS OTHERWISE DIRECTED BY ENGINEER.

NOTE:  
THE POSITION OF ALL POLE LINES, CONDUITS, WATERMANS, SEWERS AND OTHER UNDERGROUND AND OVERGROUND UTILITIES AND STRUCTURES IS NOT NECESSARILY SHOWN ON THE CONTRACT DRAWINGS, AND WHERE SHOWN, THE ACCURACY OF THE POSITION OF SUCH UTILITIES AND STRUCTURES IS NOT GUARANTEED. BEFORE STARTING WORK, DETERMINE THE EXACT LOCATION OF ALL SUCH UTILITIES AND STRUCTURES AND ASSUME ALL LIABILITY FOR DAMAGE TO THEM.

No.	REVISION	DATE	BY	No.	REVISION	DATE	BY
10	CONCEPT UPDATE	JUN 27/24	MAB	2	STORM OUTLET VIA 127 CARILLON	OCT 23/20	MAB
9	SITE PLAN UPDATE	JUL 15/22	MAB	1	SITE PLAN APPLICATION	AUG 24/20	MAB

8	ISSUED FOR ECA	MAR 24/22	MAB	SCALE	1:250
7	CITY SUBMISSION - PARK UPDATE	FEB 15/21	MAB	DATE	2024.06.27
6	CITY SUBMISSION	OCT 21/21	MAB	CHECKED	LRW
5	CITY SUBMISSION	AUG 3/21	MAB	DRAWN	DTD
4	CITY SUBMISSION	JUN 8/21	MAB	CHECKED	LRW
3	CITY SUBMISSION	FEB 5/21	MAB	APPROVED	MAB

SCALE: 1:250

**FOR REVIEW ONLY**

FOR REVIEW ONLY

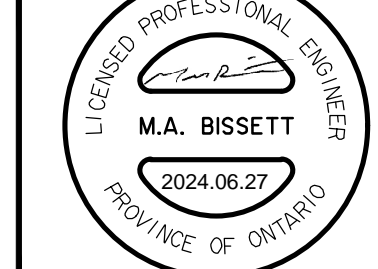
FOR REVIEW ONLY

**NOVATECH**  
Engineers, Planners & Landscape Architects  
Suite 200, 240 Michael Cowpland Drive  
Ottawa, Ontario, Canada K2M 1P6  
Telephone: (613) 254-9643  
Facsimile: (613) 254-5867  
Website: www.novatech-eng.com

CITY OF OTTAWA  
DOMINION VILLAGE - 200 BARIBEAU STREET

REMOVALS & EROSION AND SEDIMENT CONTROL PLAN

PROJECT NO: 119068  
REV: REV #10  
DRAWING NO: 119068-ESC



C:\Users\119068-ESC\OneDrive\119068-ESC.dwg ESC Jun 25, 2024 1:50pm dclhsm

PL4847-2017 - 038mmx55mm