

**LANDSCAPE PLAN**

Scale: 1:500

ORIGIN	Ht	ID	NO	BOTANICAL NAME	COMMON NAME	SIZE	REMARKS
<b>PLANT LIST - TREES</b>							
<b>STANDARD PLANTING</b>							
57 Large Deciduous Trees							
Ntv	H	0	ArAS	3 Acer rubrum 'Autumn Spire'	Red Maple	50mm caliper	WB, Staked
Ntv	0	0	As	4 Acer saccharum	Sugar Maple	70mm caliper	WB, Staked
Ntv	0	0	Co	5 Celtis occidentalis	Common Hackberry	60mm caliper	WB, Staked
Non N	0	0	GbAG	3 Ginkgo biloba 'Autumn Gold'	Autumn Gold Maidenhair Tree	60mm caliper	WB, Staked
Ntv	0	0	Qma	6 Quercus macrocarpa	Bur Oak	70mm caliper	WB, Staked
Ntv	0	0	Qr	4 Quercus rubra	Northern Red Oak	70mm caliper	WB, Staked
Ntv	H	0	UaVF	3 Ulmus americana 'Valley Forge'	Valley Forge Elm	60mm caliper	WB, Staked
20 Medium Deciduous Trees							
Ntv	0	0	Ag	4 Aesculus glabra	Ohio Buckeye	50mm caliper	WB, Staked
Ntv	H	0	GtD	6 Gleditsia triacanthos inermis 'Draves'	Streetkeeper Honeylocust	60mm caliper	WB, Staked
Ntv	0	0	Sd	6 Sorbus decora	Showy Mountain Ash	45mm caliper	WB, Staked
Non N	0	0	UF	4 Ulmus minor x parvifolia 'Frontier'	Frontier Elm	60mm caliper	WB, Staked
35 Columnar Deciduous Trees							
Ntv	H	0	ArRR	18 Acer rubrum 'Red Rocket'	Red Rocket Red Maple (Columnar)	70mm caliper	WB, Staked
Ntv	H	0	CoPS	2 Celtis occidentalis 'Prairie Sentinel'	Prairie Sentinel Hackberry (Columnar)	60mm caliper	WB, Staked
Non N	0	0	GbPS	6 Ginkgo biloba 'Princeton Sentry'	Princeton Sentry Maidenhair Tree (Columnar)	70mm caliper	WB, Staked
Non N	0	0	QrF	9 Quercus robur 'Fastigiata'	Skyrocket English Oak (Columnar)	50mm caliper	WB, Staked
4 Small Deciduous Trees							
Ntv	0	0	AI	3 Amelanchier laevis	Allegheny Serviceberry	45mm caliper	WB, Staked
Ntv	0	0	Bpo	1 Betula populifolia	Grey Birch	60mm caliper	WB, Staked
57 Small Ornamental Deciduous Trees							
Ntv	H	0	AcB	1 Amelanchier canadensis 'Ballerina'	Ballerina Serviceberry (tree form)	45mm caliper	WB, Staked
Ntv	H	0	AGRH	4 Amelanchier x grandiflora 'Robin Hill'	Robin Hill Serviceberry	45mm caliper	WB, Staked
Ntv	H	0	BnFV	12 Betula nigra 'Little King'	Fox Valley River Birch	200cm ht.	Potted
Ntv	H	0	CcgC	7 Crataegus crus-galli inermis 'Cruzam'	Thornless Crusader Cockspur Hawthorn	45mm caliper	WB, Staked
Ntv	0	0	Hvi	4 Hamamelis virginiana	Virginia Witch Hazel	45mm caliper	WB, Staked
Non N	0	0	MHG	5 Malus x 'Harvest Gold'	Harvest Gold Crabapple	50mm caliper	WB, Staked
Non N	0	0	MR	10 Malus x 'Royalty'	Royalty Crabapple	45mm caliper	WB, Staked
Non N	0	0	SrIP	2 Syringa reticulata 'Ivory Pillar'	Ivory Pillar Tree Lilac	45mm caliper	WB, Staked
Ntv	0	0	VlaT	6 Viburnum lentago (l)	Wayfarer Tree	125cm ht.	Potted
Ntv	0	0	VIT	6 Viburnum lentago (l)	Nannyberry Tree	125cm ht.	Potted
8 Conifers							
Ntv	0	0	Pp	2 Picea pungens	Colorado Spruce	200cm ht.	WB, Staked
Ntv	0	0	Pr	2 Pinus resinosa	Red Pine	200cm ht.	WB, Staked
Ntv	0	0	Ps	4 Pinus strobus	Eastern White Pine	200cm ht.	WB, Staked

ORIGIN	ID	NO	BOTANICAL NAME	COMMON NAME	SIZE	REMARKS
<b>PLANT LIST - SHRUBS</b>						
<b>STANDARD PLANTING</b>						
460 Shrubs						
Ntv	Cr	8	Cornus racemosa	Gray Dogwood	50 cm ht.	Bare root
Ntv	H	10	Hydrangea arborescens 'Annabelle'	Annabelle Hydrangea	2 gallon pot	Potted
Ntv	H	20	Hypericum prolificum	Shrubby St. John's Wort	2 gallon pot	Potted
Ntv	H	16	Juniperus scopulorum 'Medora'	Medora Juniper	125cm ht.	Potted
Ntv	H	11	Juniperus scopulorum 'Moonglow'	Moonglow Juniper	125cm ht.	Potted
Ntv	H	51	Potentilla fruticosa 'Gold Drop'	Goldfinger Potentilla	2 gallon pot	Potted
Non N	PmT	3	Pinus mugo 'Big Tuna'	Big Tuna Mugo Pine	75cm ht.	Potted
Ntv	H	73	Physocarpus opulifolius 'Little Devil'	Little Devil Ninebark	2 gallon pot	Potted
Ntv	Rp	12	Rosa palustris	Swamp Rose	50 cm ht.	Bare root
Non N	Rr	109	Rosa rugosa	Japanese Rose	3 year	Potted
Ntv	Rt	4	Rhus typhina	Staghorn Sumac	80cm ht.	Potted
Non N	SbG	114	Spiraea bumalda 'Goldflame'	Goldflame Spirea	50cm ht.	Potted
Ntv	H	17	Thuja occidentalis 'Fastigiata'	Pyramidal Arborvitae	175cm ht.	Potted
Ntv	H	12	Thuja occidentalis 'Holmstrup'	Holmstrup Eastern Arborvitae	150 cm ht.	Potted
<b>PLANT LIST - PERENNIALS</b>						
<b>STANDARD PLANTING</b>						
659 Ornamental Grasses and Flowering Perennials						
PvHM	107	Panicum virgatum 'Heavy Metal'	Heavy Metal Switch Grass	3 year	1 gallon pot	
CaKF	156	Calamagrostis x acutiflora 'Karl Foerster'	Karl Foerster Feather Reed Grass	3 year	1 gallon pot	
Pv	396	Flowering Perennials (75% min Ntv)	Beebalm, Black-eyed Susan, Blanket Flower, Blazing Star, Coneflower, Evening Primrose, Sea pink, etc.			

**LEGEND**

- PROPERTY LINE
- CHAIN LINK FENCE
- DECORATIVE FENCE
- NON-CONDUCTIVE FENCE SECTION
- LIGHT STANDARD
- PRECAST CONCRETE PAVERS
- CONCRETE PAVEMENT / WALKWAY
- SOD
- HYDROSEED
- DECORATIVE ROCKS
- STREET TREES
- SHRUB BEDS
- ORNAMENTAL GRASSES
- FLOWERING PERENNIALS

**APPROVED**  
By Allison Hamlin at 11:40 am, Jan 17, 2024

*Allison Hamlin*

**ALLISON HAMLIN**  
MANAGER (A), DEVELOPMENT REVIEW WEST  
PLANNING, REAL ESTATE & ECONOMIC DEVELOPMENT  
DEPARTMENT, CITY OF OTTAWA

- GENERAL NOTES**
- All general site information and conditions compiled from existing plans, surveys and consultant's field notes. Report all discrepancies prior to any work. No responsibility is born by the Consultant for unknown subsurface conditions.
  - The location of the utilities is approximate only, and the exact location should be determined by consulting the municipal authorities and utility companies concerned. The Contractor shall prove the location of utilities and shall be responsible for adequate protection from damage.
  - All dimensions shown are to be verified on site prior to any construction. No deviations are to be made from the layouts as shown on this plan without prior consultation with the Landscape Architect and Owner.
  - Obtain approval of Landscape Architect for granular base and layout of all pavement areas prior to construction.
  - Stake planting locations and receive approval of Landscape Architect, prior to excavation of any planting pits. No substitutions of plant material shall be made without prior approval of the Landscape Architect.
  - Where clay is encountered proper drainage must be ensured in tree/shrub pits, prior to planting. Have method approved by Landscape Architect.
  - All sodded areas to receive a minimum of 150mm of topsoil over graded sub-base. If sod with mesh is used, mesh to be removed completely during sodding operations. Sod shall come from an approved source and shall be laid within 24 hours of being cut in the nursery. Only nursery sod shall be used.
  - Final subgrade is to be approved by the Landscape Architect prior to sod being laid.
  - Maintain positive surface runoff through the entire construction period.
  - Reinstate all areas and items damaged as a result of construction activities.

no.	issue / revision	date
6		
5		
4	Re-Issued for Site Plan Control	2024/01/08
3	Issued for Site Plan approval	2023/12/12
2	Re-Issued for Site Plan Control	2023/11/13
1	Re-Issued for Site Plan Control	2023/09/29

seal

north

**N45 ARCHITECTURE INC.**  
71 Bank Street, 7th Floor - Ottawa, Ontario, K1P 5N2  
tel. 613.224.0095 fax 613.224.9811

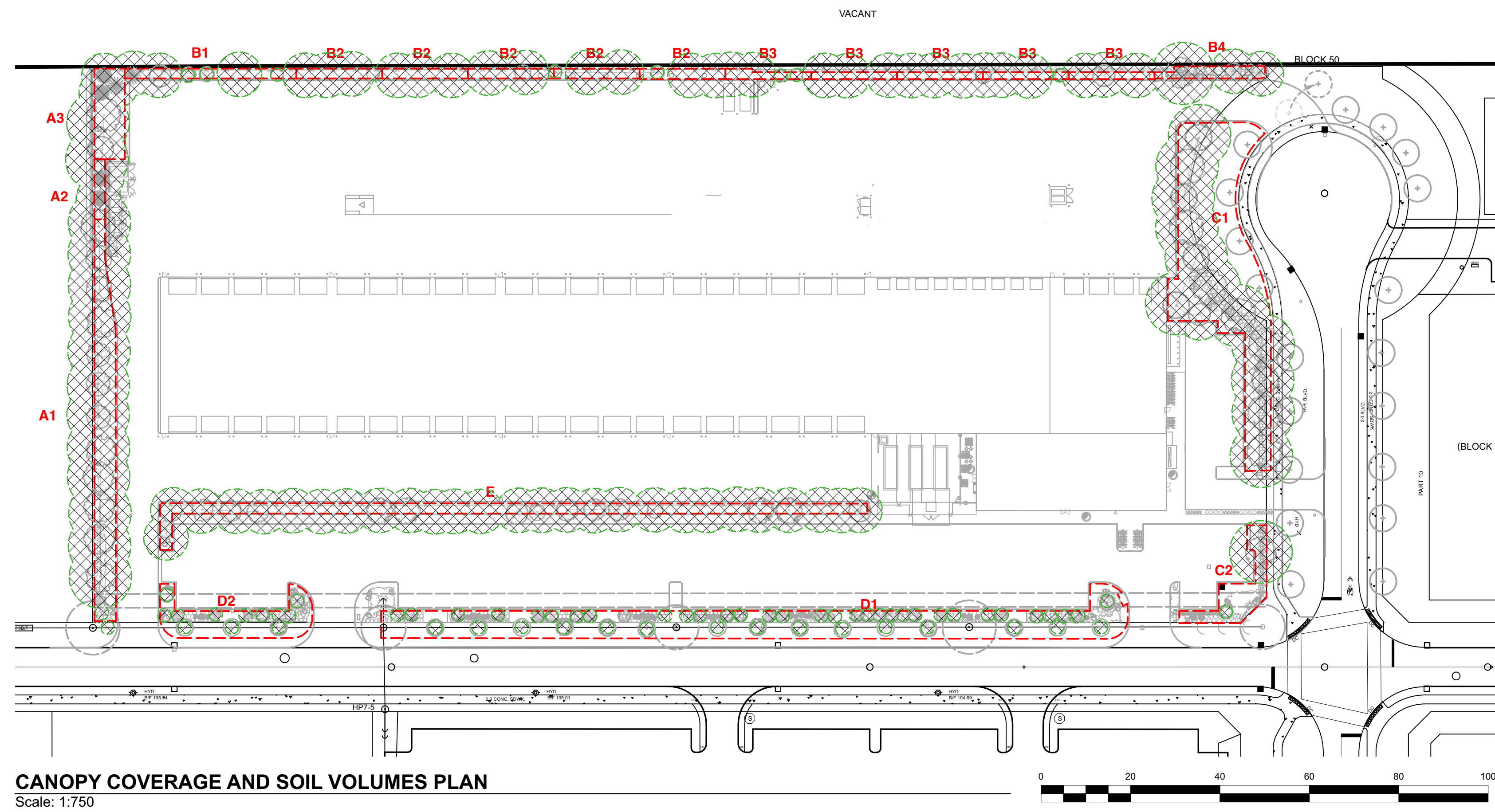
**Ruhland & Associates Ltd**  
landscape architecture • urban design • site planning  
Ph 613-224-4744 Fx 613-224-1131 info@rala.ca www.rala.ca

project  
**PUROLATOR DISTRIBUTION KANATA**  
1400 UPPER CANADA STREET, KANATA, ON

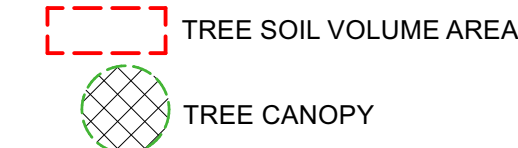
drawing title  
**LANDSCAPE / PLANTING PLAN**

scale	As Shown	drawn by	T.F./A.A.	designed by	A.A./M.R.
date	Jun 2023	checked by	M. Ruhland	plot date	
project number	<b>23-1722</b>	drawing number	<b>L-01.</b>		

Contractor to check and verify all dimensions on the job



**CANOPY COVERAGE AND SOIL VOLUMES PLAN**  
Scale: 1:750



TREE CANOPY COVERAGE	
TOTAL CANOPY AREA	7115 m <sup>2</sup>
TOTAL SITE AREA	31953 m <sup>2</sup>
PERCENT COVERAGE	22.3%

Soil Volume Area, Tree Quantity and Size	Tree Quantity	OTTAWA Target Soil Volume (m <sup>3</sup> )	Design Soil Volume	Soil Adequacy percentage
<b>AREA A1 - 12 large trees, 1 small ornamental tree (15cm Ø)*</b> plant bed (380 sq m x 0.6 metre deep)	13	221.6	228.0	103%
<b>AREA A2 - 2 conifers (continuous)</b> plant bed (32 sq m x 0.8 metre deep)	24	30.0	25.6	85%
<b>AREA A3 - 2 large trees, 3 conifers</b> plant bed (137 sq m x 0.6 metre deep)	5	81.0	82.2	101%
<b>AREA B1 - 1 conifer, 1 medium tree, 1 columnar tree, 4 small ornamental trees (10cm Ø)*</b> plant bed (80 sq m x 0.9 metre deep)	7	53.0	72.0	136%
<b>AREA B2 - 3 medium columnar trees*, 2 small ornamental trees (15cm Ø)* (max)</b> plant bed (42 sq m x 0.9 metre deep)	5	34.3	37.8	110%
<b>AREA B3 - 3 medium columnar trees*, 1 small ornamental trees (15cm Ø)* (max)</b> plant bed (29 sq m x 0.9 metre deep)	4	28.7	26.1	91%
<b>AREA B4 - 1 large tree, 2 conifers, 1 ornamental tree</b> plant bed (140 sq m x 0.4 metre deep)	4	57.0	54.9	96%
<b>AREA C1 - 12 large trees, 1 medium tree</b> plant bed (575 sq m x 0.4 metre deep)	14	246.0	230.0	93%
<b>AREA C2 - 1 large tree, 1 small tree</b> plant bed (140 sq m x 0.4 metre deep)	2	30.0	56.0	187%
<b>AREA D1 - 1 orn tree, 12 small orn trees (15cm Ø)*, 11 small orn trees (10cm Ø)*, 11 small orn trees (8cm Ø)*</b> plant bed (450 sq m x 0.4 metre deep)	24	166.9	180.0	108%
<b>AREA D2 - 2 orn trees, 2 small ornamental trees (150cm Ø)*, 3 small ornamental trees (8cm Ø)*</b> plant bed (96 sq m x 0.45 metre deep)	7	39.7	43.2	109%
<b>AREA E - 16 medium trees, 12 columnar trees</b> plant bed (415 sq m x 0.9 metre deep)	28	348.0	373.5	107%

\* Smaller columnar trees, small ornamental trees with growth to 8-15cm DBH, large shrubs, and columnar conifers calculated using 'How much soil to grow a big tree' by DeepRoot as a guide



**GENERAL NOTES**

- All general site information and conditions compiled from existing plans, surveys and consultant's field notes. Report all discrepancies prior to any work. No responsibility is born by the Consultant for unknown subsurface conditions.
- The location of the utilities is approximate only, and the exact location should be determined by consulting the municipal authorities and utility companies concerned. The Contractor shall prove the location of utilities and shall be responsible for adequate protection from damage.
- All dimensions shown are to be verified on site prior to any construction. No deviations are to be made from the layouts as shown on this plan without prior consultation with the Landscape Architect and Owner.
- Obtain approval of Landscape Architect for granular base and layout of all pavement areas prior to construction.
- Stake planting locations and receive approval of Landscape Architect, prior to excavation of any planting pits. No substitutions of plant material shall be made without prior approval of the Landscape Architect.
- Where clay is encountered proper drainage must be ensured in trees/shrub pits, prior to planting. Have method approved by Landscape Architect.
- All sodded areas to receive a minimum of 150mm of topsoil over graded sub-base. If sod with mesh is used, mesh to be removed completely during sodding operations. Sod shall come from an approved source and shall be laid within 24 hours of being cut in the nursery. Only nursery sod shall be used.
- Final subgrade is to be approved by the Landscape Architect prior to sod being laid.
- Maintain positive surface runoff through the entire construction period.
- Reinstate all areas and items damaged as a result of construction activities.

6		
5		
4	Re-Issued for Site Plan Control	2024/01/08
3	Issued for Site Plan approval	2023/12/12
2	Re-Issued for Site Plan Control	2023/11/13
1	Re-Issued for Site Plan Control	2023/09/29

no.	issue / revision	date
-----	------------------	------



north

**N45 ARCHITECTURE INC.**  
71 Bank Street, 7th Floor - Ottawa, Ontario, K1P 5N2  
tel. 613.224.0095 fax 613.224.9811

**Ruhland & Associates Ltd**  
landscape architecture • urban design • site planning  
Ph 613-224-4744 Fx 613-224-1131 info@rala.ca www.rala.ca

project  
**PUROLATOR DISTRIBUTION KANATA**  
1400 UPPER CANADA STREET, KANATA, ON

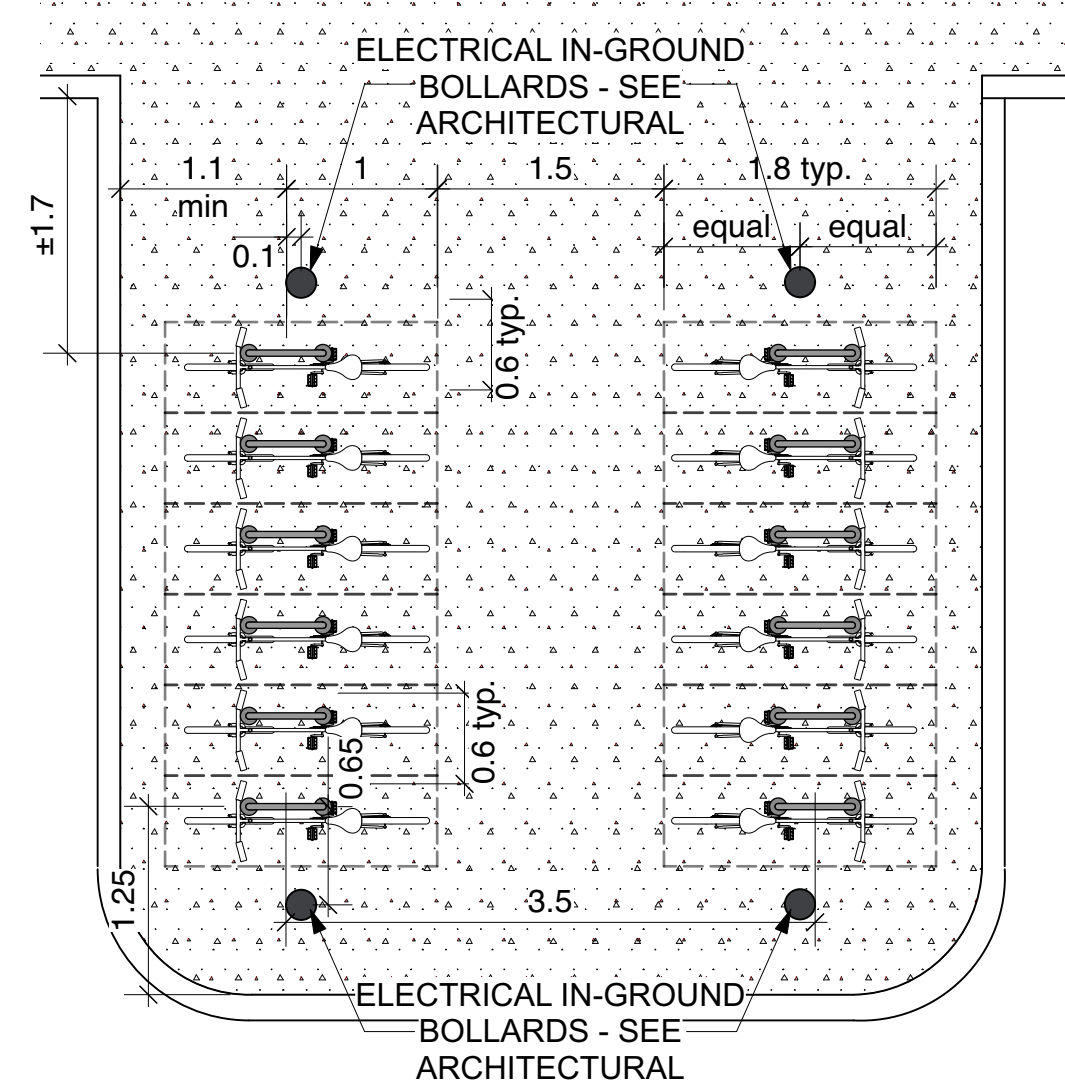
drawing title  
**CANOPY COVERAGE, SOIL VOLUME & DETAILS**

scale	drawn by	designed by
As Shown	T. F. / A.A.	A. A. / M.R.
date	checked by	plot date
Jun 2023	M. Ruhland	

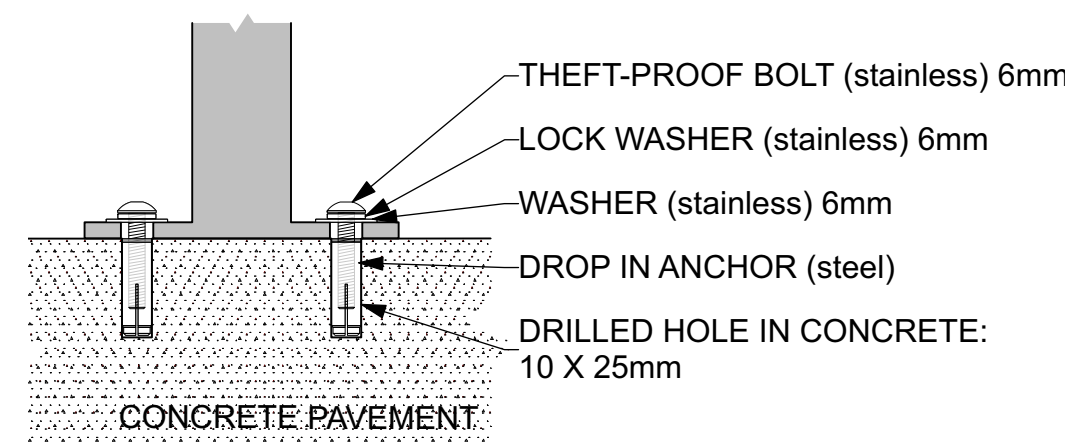
project number  
**23-1722**

drawing number  
**L-02.**

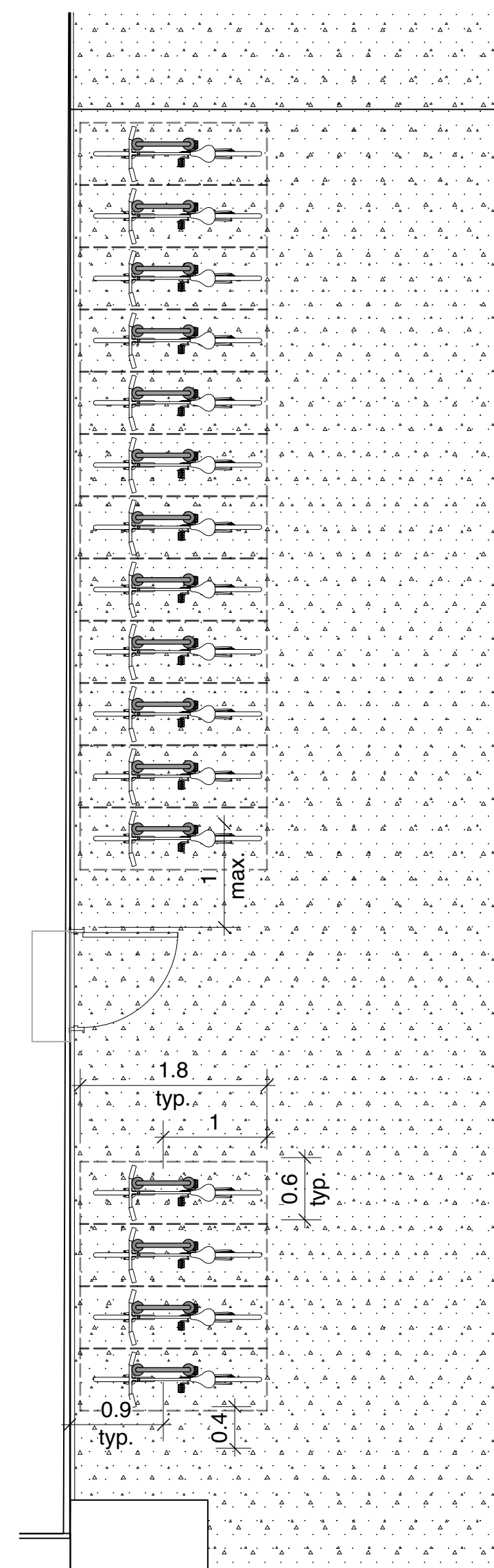
Contractor to check and verify all dimensions on the job



**5 BIKE RACK 1 LAYOUT**  
L-02. Scale: 1:50



**10 BIKE RACK INSTALLATION**  
L-02. Scale: NTS  
DETAILS ARE SHOWN FOR DESIGN INTENT ONLY. CONTRACTOR TO PROVIDE SHOP DRAWINGS FOR APPROVAL.



**11 BIKE RACK 2 LAYOUT**  
L-02. Scale: 1:50

**MBR-0500-00003**  
Legacy #MBR500-S

**500 SERIES**

**Sustainability Facts**

Unit Size	One (1) MBR-0500-00001 Bike Rack
Carbon footprint (GWP)	103 kg CO <sub>2</sub> -Eq
Carbon footprint (GWP)	Measured in kilograms of carbon dioxide equivalent
Total energy use (TPE)	1770 Mj-Eq
Total energy use (TPE)	Measured in megajoules of energy equivalent
Waster use (WDP)	0.843 m <sup>3</sup> water
Waster use (WDP)	Measured in cubic metres of water
Material recyclability	100%
LEED v4.1 Credits	
Type III Environmental Product Declaration	
Material Inventory	
Low VOC finishes	
Free of Red List substances	

\*Full EPD can be referenced for more information: <https://www.epdregistration.com/maglin/>

DESCRIPTION: 500 Series - 500 Bike Rack: H.S. Steel Tube, Surface Mount, 2 Bike Configuration

FINISH: All steel components are protected with E-Coat rust proofing. The Maglin Powdercoat System provides a durable finish on all metal surfaces.

INSTALLATION: The bike rack is delivered pre-assembled. It is available with either a surface mount or direct burial installation option.

TO SPECIFY: Select MBR-0500-00003  
Choose:  
- Powdercoat Color

HEIGHT: 35" (88.9cm)      LENGTH: 19.25" (48.9cm)      WEIGHT: 13.27 lbs (6.0kg)

**MAGLIN**  
Site Furniture

T 800 716 5606  
F 877 260 9393  
www.maglin.com  
sales@maglin.com

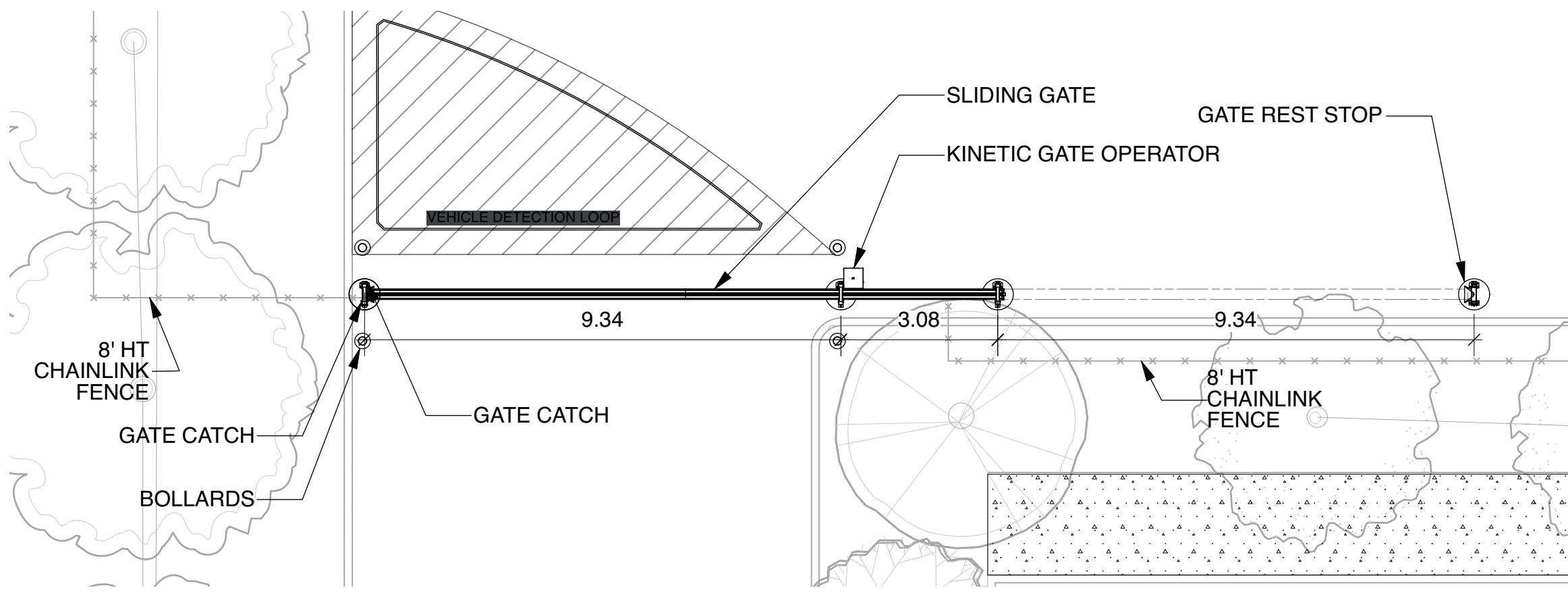
- All drawings, specifications, design and details on this page remain the property of Maglin Site Furniture Inc. and may not be used without Maglin authorization.  
- Details and specifications may vary due to continuing improvements of our products.

**3 MAGLIN BIKE RACK MRB-0500**  
L-02. Scale: NTS

**APPROVED**  
By Allison Hamlin at 11:40 am, Jan 17, 2024

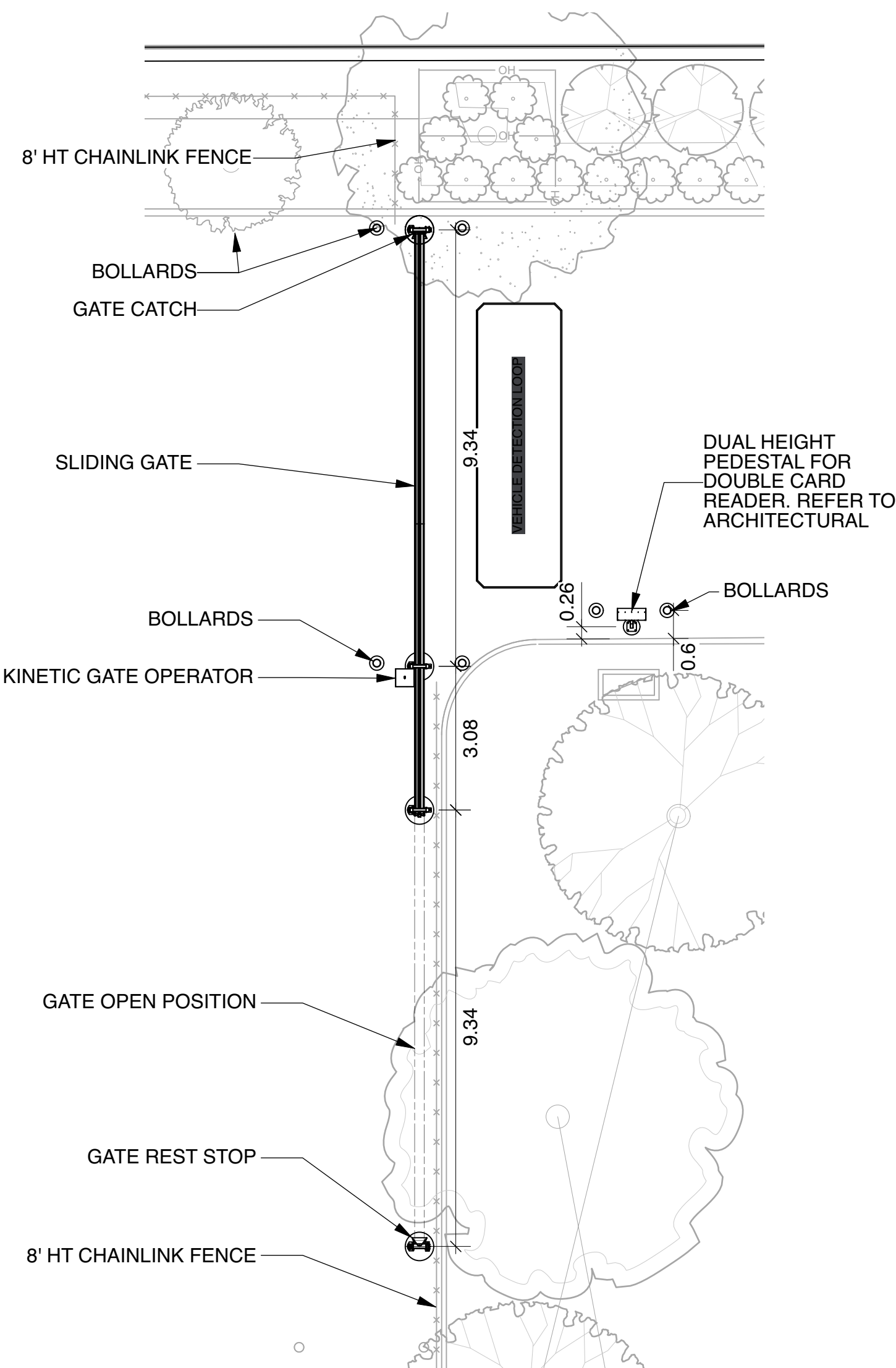
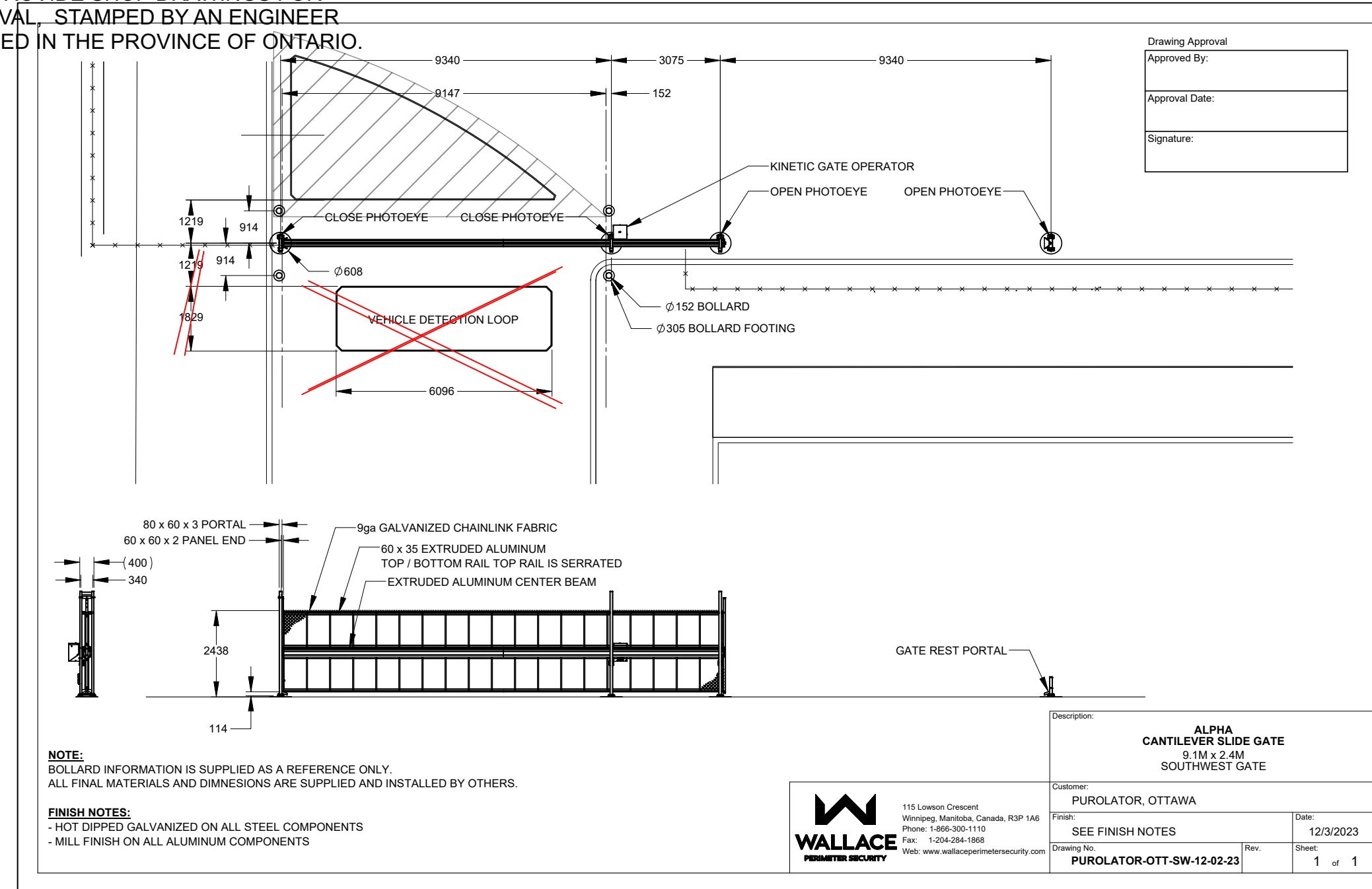
*Allison Hamlin*

**ALLISON HAMLIN**  
MANAGER (A), DEVELOPMENT REVIEW WEST  
PLANNING, REAL ESTATE & ECONOMIC DEVELOPMENT  
DEPARTMENT, CITY OF OTTAWA

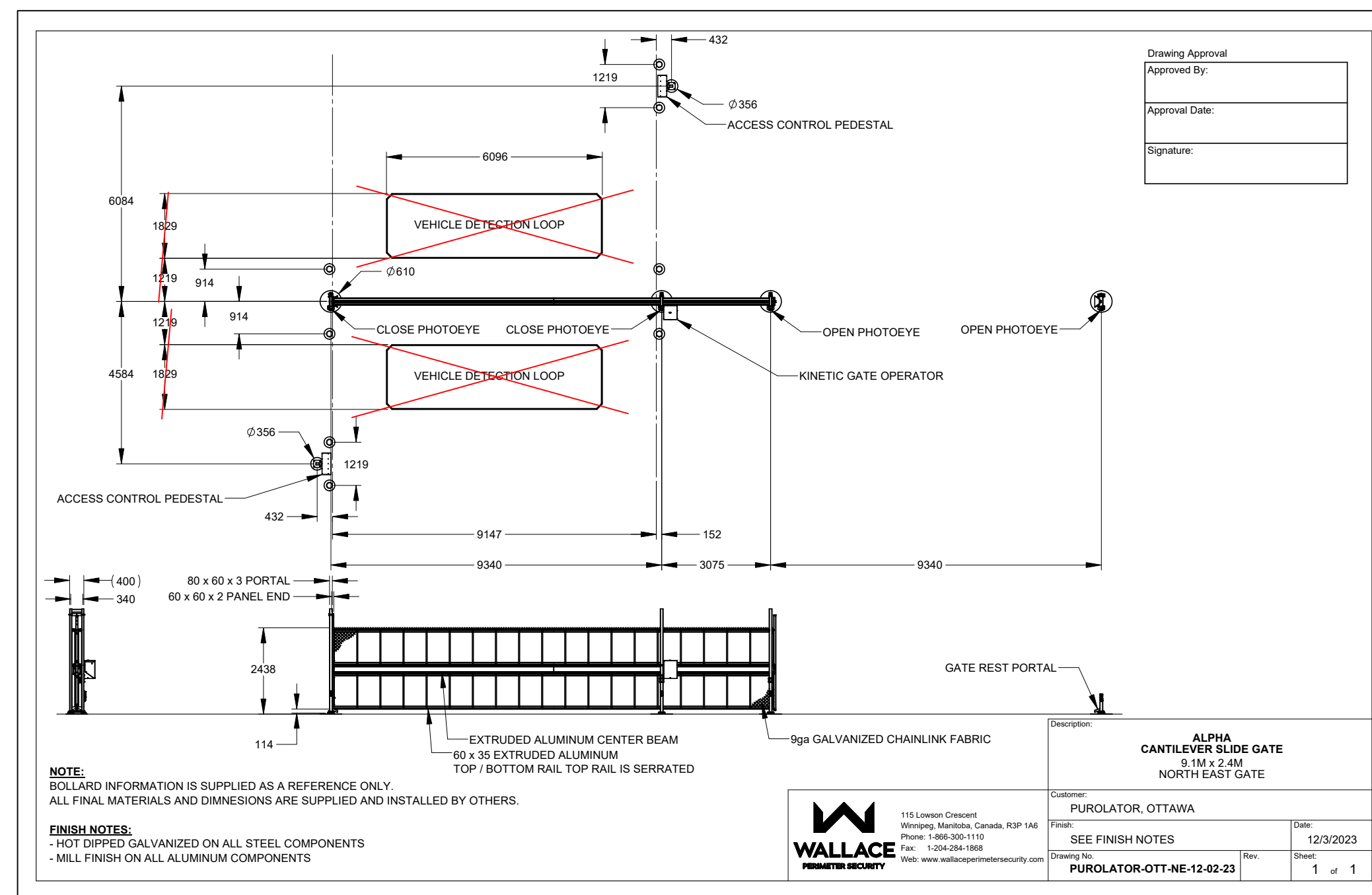


**2 SOUTH-WEST GATE**  
L-03. Scale: 1:100

DETAILS ARE SHOWN FOR DESIGN INTENT ONLY. PROVIDE SHOP DRAWINGS FOR APPROVAL, STAMPED BY AN ENGINEER LICENSED IN THE PROVINCE OF ONTARIO.

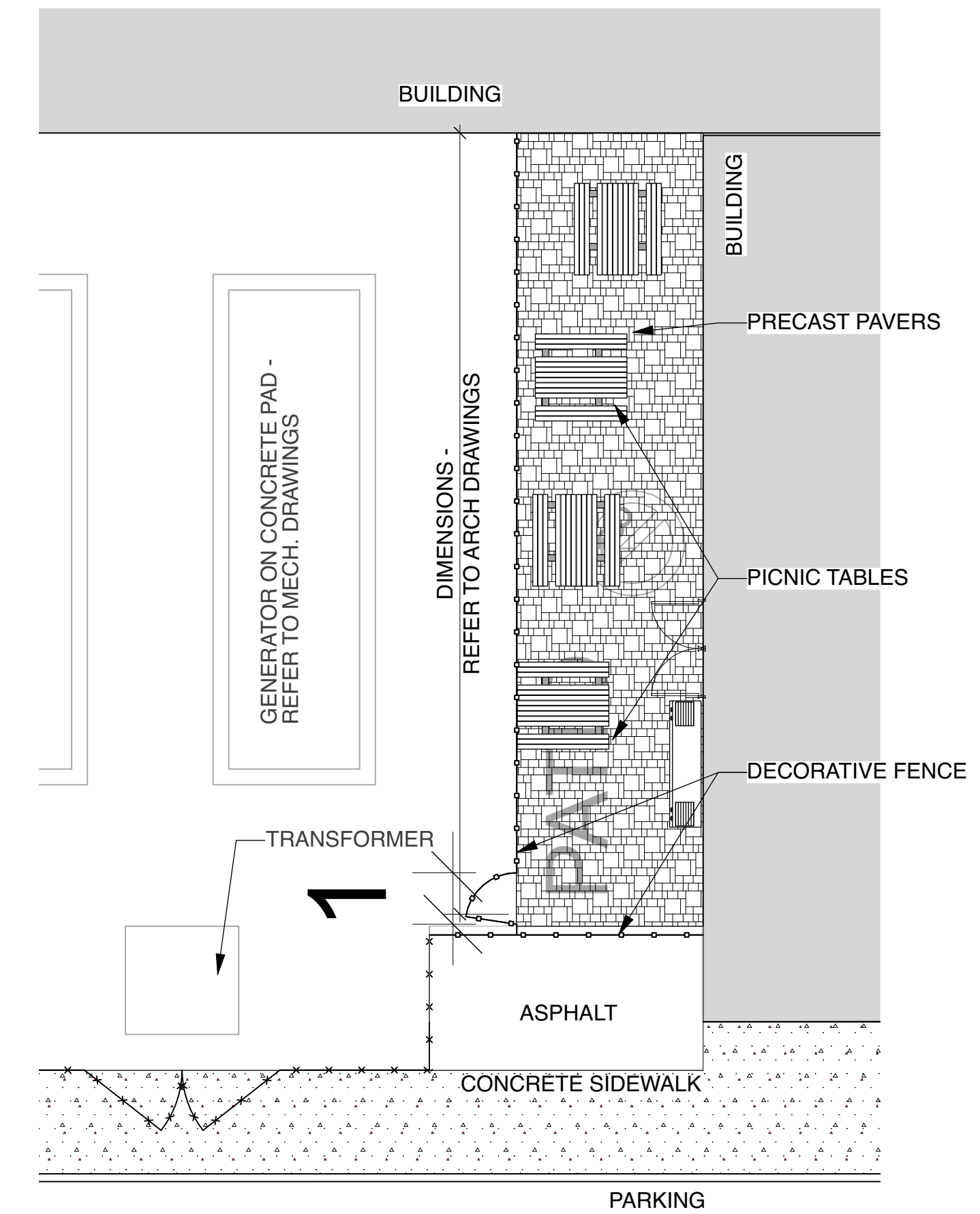


**4 NORTH-EAST GATE**  
L-03. Scale: 1:100



*Allison Hamlin*  
**ALLISON HAMLIN**  
MANAGER (A), DEVELOPMENT REVIEW WEST  
PLANNING, REAL ESTATE & ECONOMIC DEVELOPMENT  
DEPARTMENT, CITY OF OTTAWA

**APPROVED**  
By Allison Hamlin at 11:40 am, Jan 17, 2024

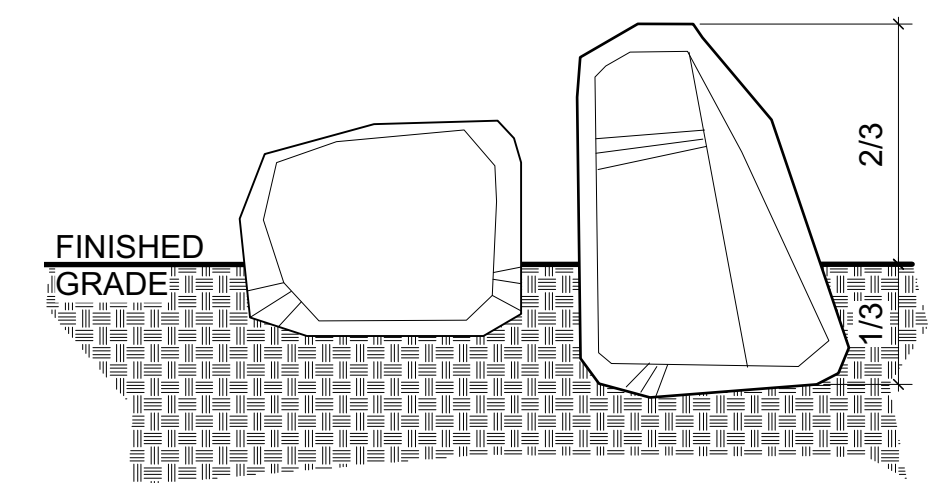


**1 PATIO LAYOUT**  
L-03. Scale: 1:100

DETAILS ARE SHOWN FOR DESIGN INTENT ONLY. PROVIDE SHOP DRAWINGS FOR APPROVAL, STAMPED BY AN ENGINEER LICENSED IN THE PROVINCE OF ONTARIO.



**2 PICNIC TABLE - SUNPERK SPP-105**  
L-03. Scale: NTS

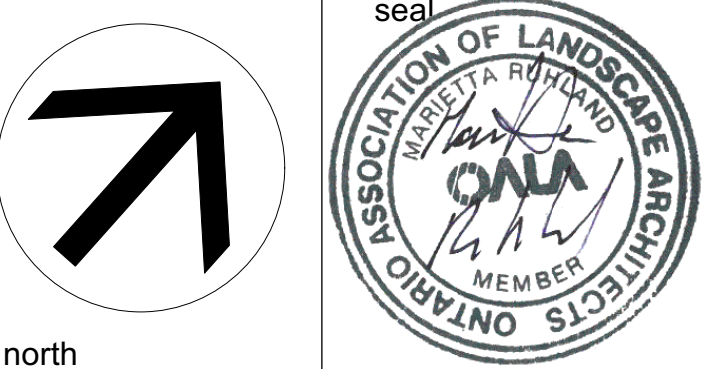


**3 DECORATIVE ROCK PLACEMENT**  
L-03. Scale: NTS

WEATHERED FIELDSTONE  
- LICHEN AND MOSSES ON BOULDERS TO BE PROTECTED  
- PLACE BOULDERS WEATHERED SIDE UP UNDER DIRECTION OF LANDSCAPE ARCHITECT

- GENERAL NOTES**
- All general site information and conditions compiled from existing plans, surveys and consultant's field notes. Report all discrepancies prior to any work. No responsibility is born by the Consultant for unknown subsurface conditions.
  - The location of the utilities is approximate only, and the exact location should be determined by consulting the municipal authorities and utility companies concerned. The Contractor shall prove the location of utilities and shall be responsible for adequate protection from damage.
  - All dimensions shown are to be verified on site prior to any construction. No deviations are to be made from the layouts as shown on this plan without prior consultation with the Landscape Architect and Owner.
  - Obtain approval of Landscape Architect for granular base and layout of all pavement areas prior to construction.
  - Stake planting locations and receive approval of Landscape Architect, prior to excavation of any planting pits. No substitutions of plant material shall be made without prior approval of the Landscape Architect.
  - Where clay is encountered proper drainage must be ensured in tree/shrub pits, prior to planting. Have method approved by Landscape Architect.
  - All sodded areas to receive a minimum of 150mm of topsoil over graded sub-base. If sod with mesh is used, mesh to be removed completely during sodding operations. Sod shall come from an approved source and shall be laid within 24 hours of being cut in the nursery. Only nursery sod shall be used.
  - Final subgrade is to be approved by the Landscape Architect prior to sod being laid.
  - Maintain positive surface runoff through the entire construction period.
  - Reinstate all areas and items damaged as a result of construction activities.

no.	issue / revision	date
6		
5		
4	Re-Issued for Site Plan Control	2024/01/08
3	Issued for Site Plan approval	2023/12/12
2	Re-Issued for Site Plan Control	2023/11/13
1	Re-Issued for Site Plan Control	2023/09/29



**N45 ARCHITECTURE INC.**  
71 Bank Street, 7th Floor - Ottawa, Ontario, K1P 5N2  
tel. 613.224.0095 fax 613.224.9811

**Ruhland & Associates Ltd**  
landscape architecture • urban design • site planning  
Ph 613-224-4744 Fx 613-224-1331 info@rala.ca www.rala.ca

**PUROLATOR DISTRIBUTION KANATA**  
1400 UPPER CANADA STREET, KANATA, ON

**DETAILS**

scale	drawn by	designed by
As Shown	T. F. / A. A.	A. A. / M. R.
date	checked by	plot date
Jun 2023	M. Ruhland	
project number	drawing number	
<b>23-1722</b>	<b>L-03.</b>	

Contractor to check and verify all dimensions on the job

*Allison Hamlin*

**ALLISON HAMLIN**  
**MANAGER (A), DEVELOPMENT REVIEW WEST**  
**PLANNING, REAL ESTATE & ECONOMIC DEVELOPMENT**  
**DEPARTMENT, CITY OF OTTAWA**

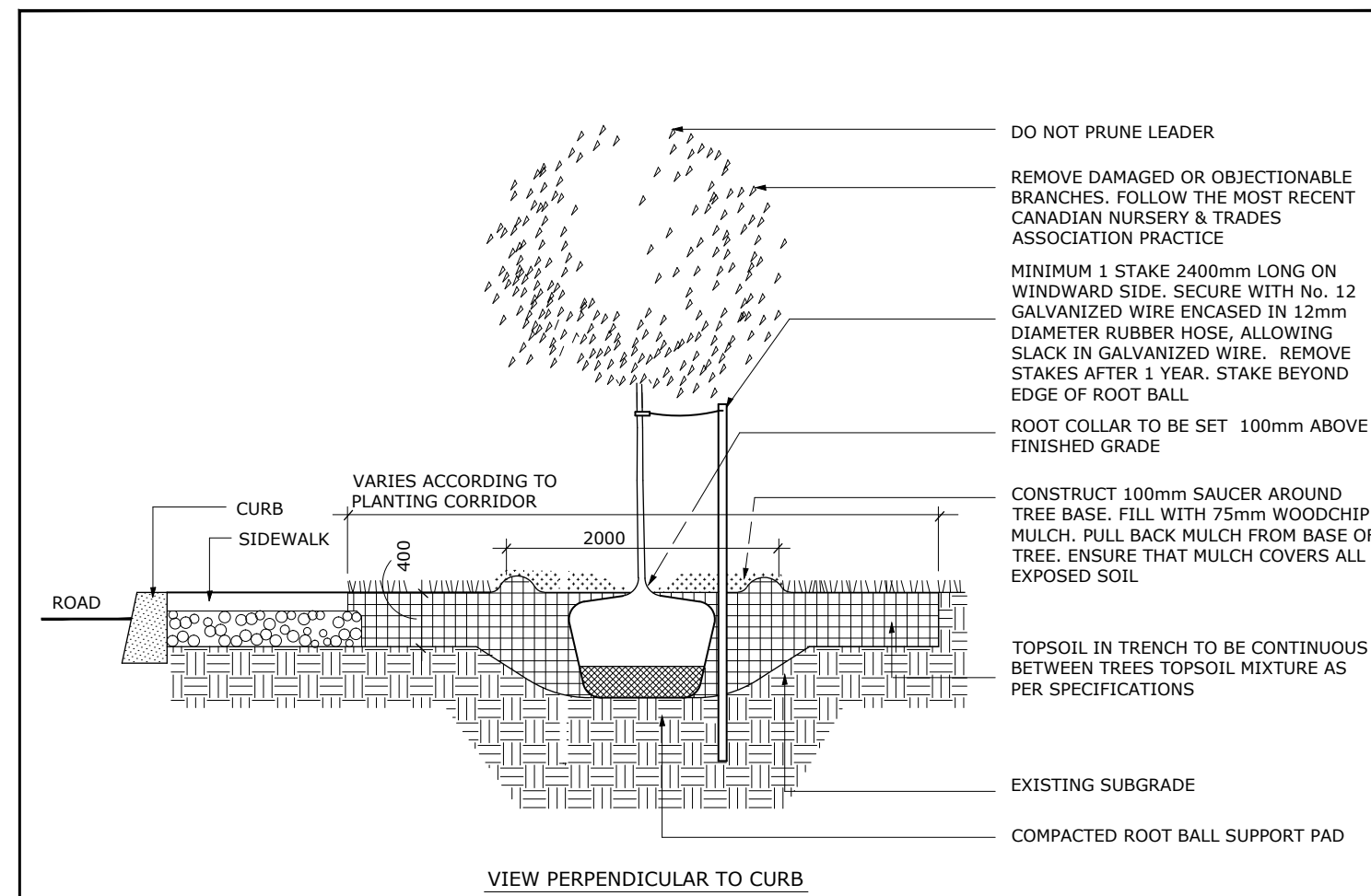
**APPROVED**

By Allison Hamlin at 11:40 am, Jan 17, 2024

**NOTE - TREE SOIL VOLUME REQUIREMENTS:**

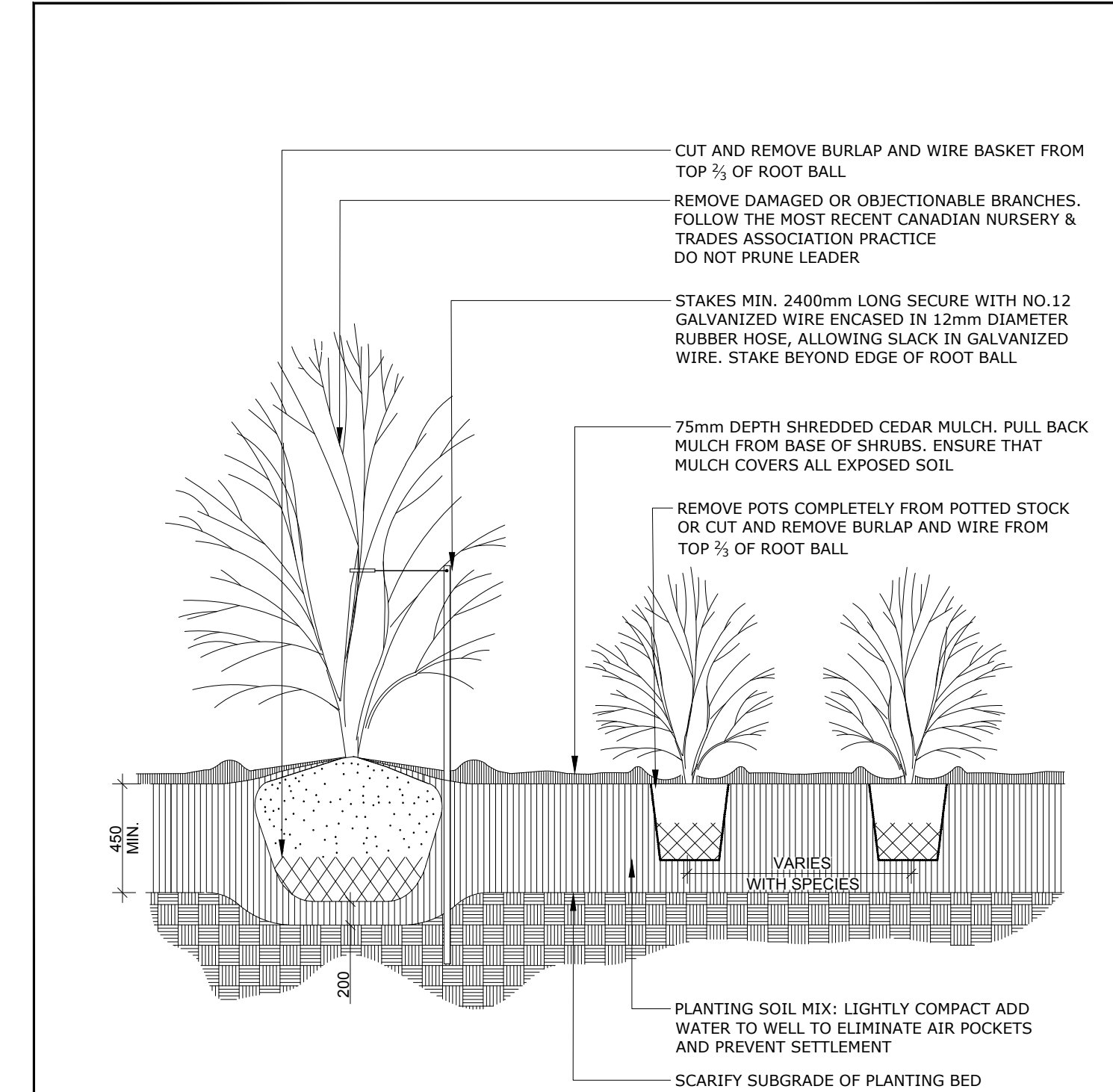
STANDARD TREE SOIL VOLUMES QUANTITIES INCLUDE THE TOP 900-1000mm OF IMPORTED AND EXISTING SOIL/SUBSOIL LAYER TO CALCULATE TOTAL SOIL VOLUMES REQUIRED BY CITY OF OTTAWA FOR SUSTAINABLE TREE GROWTH. WHERE LARGER SOFT AREAS ARE AVAILABLE WITH APPROVED EXISTING TOPSOIL AND SUBSOIL, IMPORTED TOPSOIL ONLY AS PER DETAIL L-1.

WHERE EXISTING MATERIAL BELOW THE SPECIFIED TOPSOIL IS NOT CONDUCTIVE TO TREE GROWTH, AN ADDITIONAL LAYER OF 400mm PLANTING MEDIUM AND APPROVED SUBSOIL IS TO BE INSTALLED BELOW SPECIFIED TOPSOIL DEPTH TO OBTAIN THE SOIL VOLUME DEPTH REQUIRED. REFER TO SOIL VOLUME CHART AND PLANS FOR AREA WHERE TREE SOIL VOLUMES ARE REQUIRED.



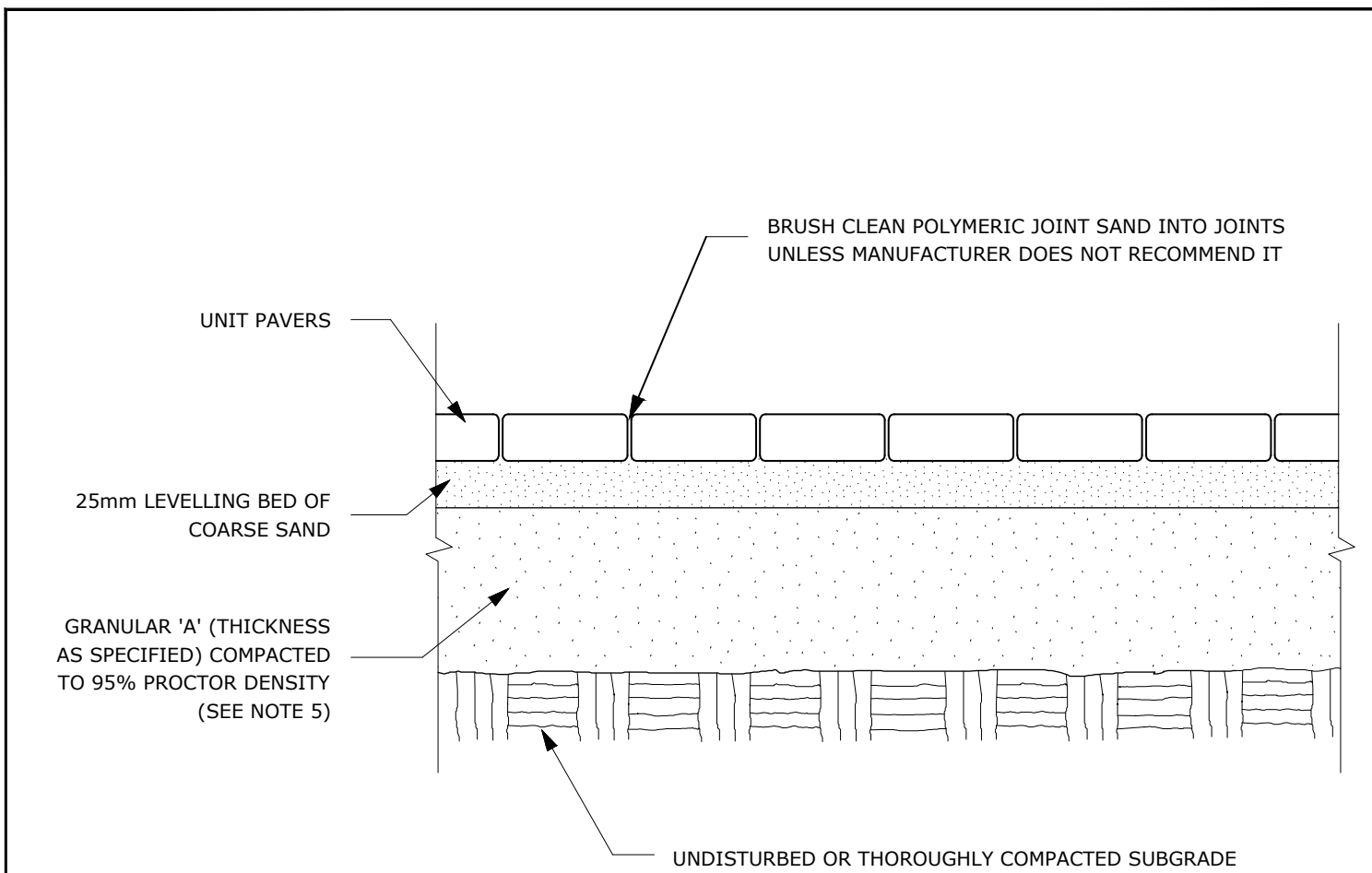
- NOTES:**
1. ALL MEASUREMENTS ARE IN MILLIMETRES UNLESS OTHERWISE NOTED
  2. CUT AND REMOVE BURLAP AND WIRE BASKET FROM TOP 2/3 OF ROOT BALL WITHOUT DISTURBING ROOTS
  3. LOCATION AS SPECIFIED ON THE CONTRACT DRAWINGS

**Ottawa** TITLE: **PLANTING TRENCH WELL DRAINED SOILS** DATE: MAY 2001  
 REV: JAN 2017  
 DWG No: L1



- NOTES:**
1. PLANTING SOIL MIXTURE AS PER SPECIFICATION.
  2. SHRUBS SPECIFIED BARE ROOTS (B.R.) TO BE PLANTED SO THAT ROOTS ARE FULLY EXTENDED IN PLANTING HOLE WITH SOIL MIX BACKFILLED CAREFULLY TO PREVENT ROOT DAMAGE
  3. PROVIDE 100 HIGH EARTH SAUCER AROUND SHRUB BED
  4. STAKES TO BE REMOVED AT COMPLETION OF TWO YEAR WARRANTY PERIOD

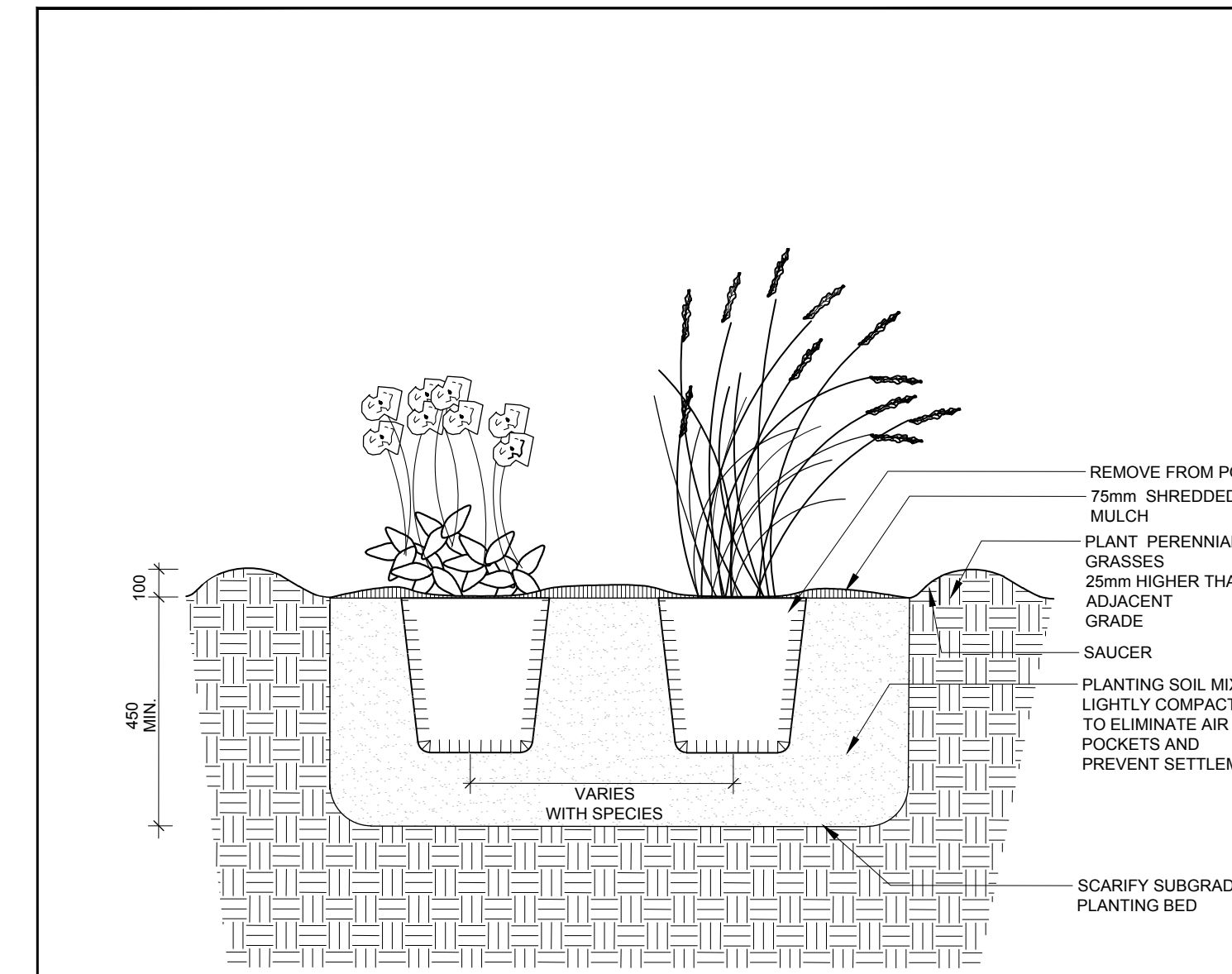
**Ottawa** TITLE: **CONTINUOUS SHRUB BED PLANTING** DATE: FEB 2013  
 REV: FEB 2014  
 DWG No: L17



- NOTES:**
1. THE LEVELING COURSE (BEDDING SAND) SHALL BE PLACED LOOSE, IN A UNIFORM LAYER AT A MAXIMUM DEPTH OF 25mm TO ACHIEVE THE FINAL COMPACTED THICKNESS AND GRADE AS SPECIFIED
  2. INSTALL SOLID EDGE RESTRAINT BETWEEN UNIT PAVERS AND ANY SOFT SURFACE (SOD, PLANTING BED, ETC.)
  3. UNIT PAVERS ARE THEN PLACED ON TOP OF THE LEVELING COURSE AND ADDITIONAL SAND SWEEPED BETWEEN THE UNIT PAVERS
  4. THE UNIT PAVERS ARE THEN VIBRATED INTO PLACE WITH A VIBRA-PLATE AND WATER IS ADDED TO ASSIST IN THE SETTLING OF THE JOINT SAND
  5. GRANULAR 'A' DEPTH TO BE 100mm FOR PEDESTRIAN AREAS AND 150mm FOR VEHICULAR ACCESSSES. OR AS RECOMMENDED BY GEOTECHNICAL INVESTIGATION
  6. USE OF THIS DETAIL REQUIRES THE PRIOR APPROVAL OF THE GENERAL MANAGER

ADDITIONAL NOTES FOR NUMBER 5: PRECAST PAVERS IN PEDESTRIAN AREAS WHERE NORMAL SNOW REMOVALS ARE DONE IS TO RECEIVE A MINIMUM 200mm GRANULAR 'A'. FURTHER ADJUSTMENTS TO BE SPECIFIED IN RELATION TO SITE CONDITIONS AND GEOTECHNICAL RECOMMENDATIONS.

**Ottawa** TITLE: **UNIT PAVING - ON GRANULAR BASE** DATE: MAY 2001  
 REV: FEB 2016  
 DWG No: SC9



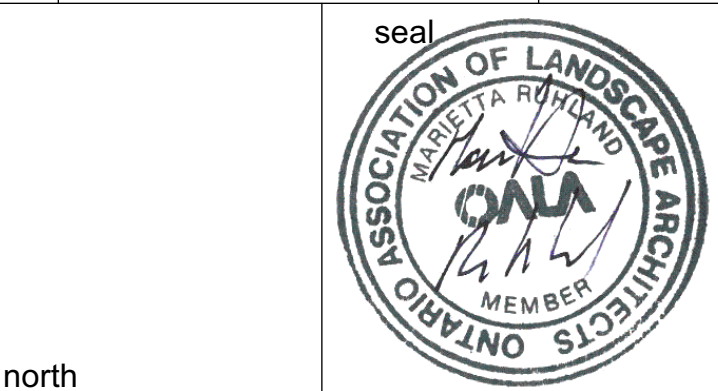
- NOTES:**
1. ALL DIMENSIONS ARE IN MILLIMETRES UNLESS OTHERWISE NOTED.
  2. PLANTING SOIL MIXTURE AS PER SPECIFICATION.
  3. PROVIDE 100MM HIGH EARTH SAUCER AROUND PERENNIAL/GRASS BED.

**Ottawa** TITLE: **PERENNIAL AND ORNAMENTAL GRASS PLANTING** DATE: JAN 2015  
 REV:  
 DWG No: L21



- GENERAL NOTES**
1. All general site information and conditions compiled from existing plans, surveys and consultant's field notes. Report all discrepancies prior to any work. No responsibility is born by the Consultant for unknown subsurface conditions.
  2. The location of the utilities is approximate only, and the exact location should be determined by consulting the municipal authorities and utility companies concerned. The Contractor shall prove the location of utilities and shall be responsible for adequate protection from damage.
  3. All dimensions shown are to be verified on site prior to any construction. No deviations are to be made from the layouts as shown on this plan without prior consultation with the Landscape Architect and Owner.
  4. Obtain approval of Landscape Architect for granular base and layout of all pavement areas prior to construction.
  5. Stake planting locations and receive approval of Landscape Architect, prior to excavation of any planting pits. No substitutions of plant material shall be made without prior approval of the Landscape Architect.
  6. Where clay is encountered proper drainage must be ensured in tree/shrub pits, prior to planting. Have method approved by Landscape Architect.
  7. All sodded areas to receive a minimum of 150mm of topsoil over graded sub-base. If sod with mesh is used, mesh to be removed completely during sodding operations. Sod shall come from an approved source and shall be laid within 24 hours of being cut in the nursery. Only nursery sod shall be used.
  8. Final subgrade is to be approved by the Landscape Architect prior to sod being laid.
  9. Maintain positive surface runoff through the entire construction period.
  10. Reinststate all areas and items damaged as a result of construction activities.

6		
5		
4	Re-Issued for Site Plan Control	2024/01/08
3	Issued for Site Plan approval	2023/12/12
2	Re-Issued for Site Plan Control	2023/11/13
1	Re-Issued for Site Plan Control	2023/09/29
no.	issue / revision	date



**N45 ARCHITECTURE INC.**  
 71 Bank Street, 7th Floor - Ottawa, Ontario, K1P 5N2  
 tel. 613.224.0095 fax 613.224.9811

**Ruhland & Associates Ltd**  
 landscape architecture • urban design • site planning  
 Ph 613-224-4744 Fx 613-224-1131 info@rala.ca www.rala.ca

project  
**PUROLATOR DISTRIBUTION KANATA**  
 1400 UPPER CANADA STREET,  
 KANATA, ON

drawing title  
**DETAILS**

scale	As Shown	drawn by	T. F. / A.A.	designed by	A. A. / M.R.
date	Jun 2023	checked by	M. Ruhland	plot date	
project number	<b>23-1722</b>	drawing number	<b>L-04.</b>		

Contractor to check and verify all dimensions on the job

CITY'S FILE NO.: D07-12-20-0175