

SCHEDULE				
PART	LOT	CON.	PIN	AREA (Sq. m)
1	PART OF 9	3	PART OF 04592-3012(LT)	73527.78
2	PART OF 8			4341.42
3	PART OF 8			4847.45

LOT 9, CONCESSION 3 (RIDEAU FRONT)  
PART 1, PLAN 4R-21820

PLAN OF SURVEY OF  
**PART OF LOTS 8 AND 9**  
**CONCESSION 3 (RIDEAU FRONT)**  
CITY OF OTTAWA

SCALE 1 : 1000  
20 0 20 40 60 metres

THE INTENDED PLOT SIZE OF THIS PLAN IS 916mm IN WIDTH BY 457mm IN HEIGHT WHEN PLOTTED AT A SCALE OF 1:1000

J.D. BARNES LIMITED  
**METRIC** DISTANCES AND/OR COORDINATES SHOWN ON THIS PLAN ARE IN METRES AND CAN BE CONVERTED TO FEET BY DIVIDING BY 0.3048.

**NOTES**  
BEARINGS ARE MTM GRID, REFERENCED TO OBSERVED REFERENCE POINTS A AND B, BY REAL TIME NETWORK (RTN) OBSERVATIONS, MTM ZONE 09, NAD83 (ORIGINAL).  
DISTANCES ARE GROUND AND CAN BE CONVERTED TO GRID BY MULTIPLYING BY THE COMBINED SCALE FACTOR OF 0.999926.

INTEGRATION DATA		
OBSERVED REFERENCE POINTS (ORPs): MTM ZONE 09, NAD83 (ORIGINAL).		
COORDINATES TO URBAN ACCURACY PER SECTION 14 (2) OF O.REG 216/10.		
POINT ID	EASTING	NORTHING
ORP (A)	363353.55	5011073.00
ORP (B)	364154.28	5011533.26
COORDINATES CANNOT, IN THEMSELVES, BE USED TO RE-ESTABLISH CORNERS OR BOUNDARIES SHOWN ON THIS PLAN.		

- LEGEND**
- DENOTES SURVEY MONUMENT FOUND
  - DENOTES SURVEY MONUMENT SET
  - SIB DENOTES STANDARD IRON BAR
  - IB DENOTES IRON BAR
  - MEAS DENOTES MEASURED
  - JDB DENOTES J.D. BARNES LIMITED
  - 1319 DENOTES WEBSTER & SIMMONDS SURVEYING LTD.
  - 1152 DENOTES J.E. KIHIL, O.L.S.
  - SG DENOTES STANTEC GEOMATICS LTD.

ALL SET SSIB AND PB MONUMENTS WERE USED DUE TO LACK OF OVERBURDEN AND/OR PROXIMITY OF UNDERGROUND UTILITIES IN ACCORDANCE WITH SECTION 11 (4) OF O.REG. 525/91.  
ALL FOUND BARS ARE JDB UNLESS OTHERWISE SPECIFIED  
ALL FOUND AND SET BARS ARE IRON BARS UNLESS OTHERWISE SPECIFIED

**SURVEYOR'S CERTIFICATE**  
I CERTIFY THAT:  
1. THIS SURVEY AND PLAN ARE CORRECT AND IN ACCORDANCE WITH THE SURVEYS ACT, THE SURVEYORS ACT AND THE LAND TITLES ACT AND THE REGULATIONS MADE UNDER THEM.  
2. THE SURVEY WAS COMPLETED ON \_\_\_\_\_, 2020.

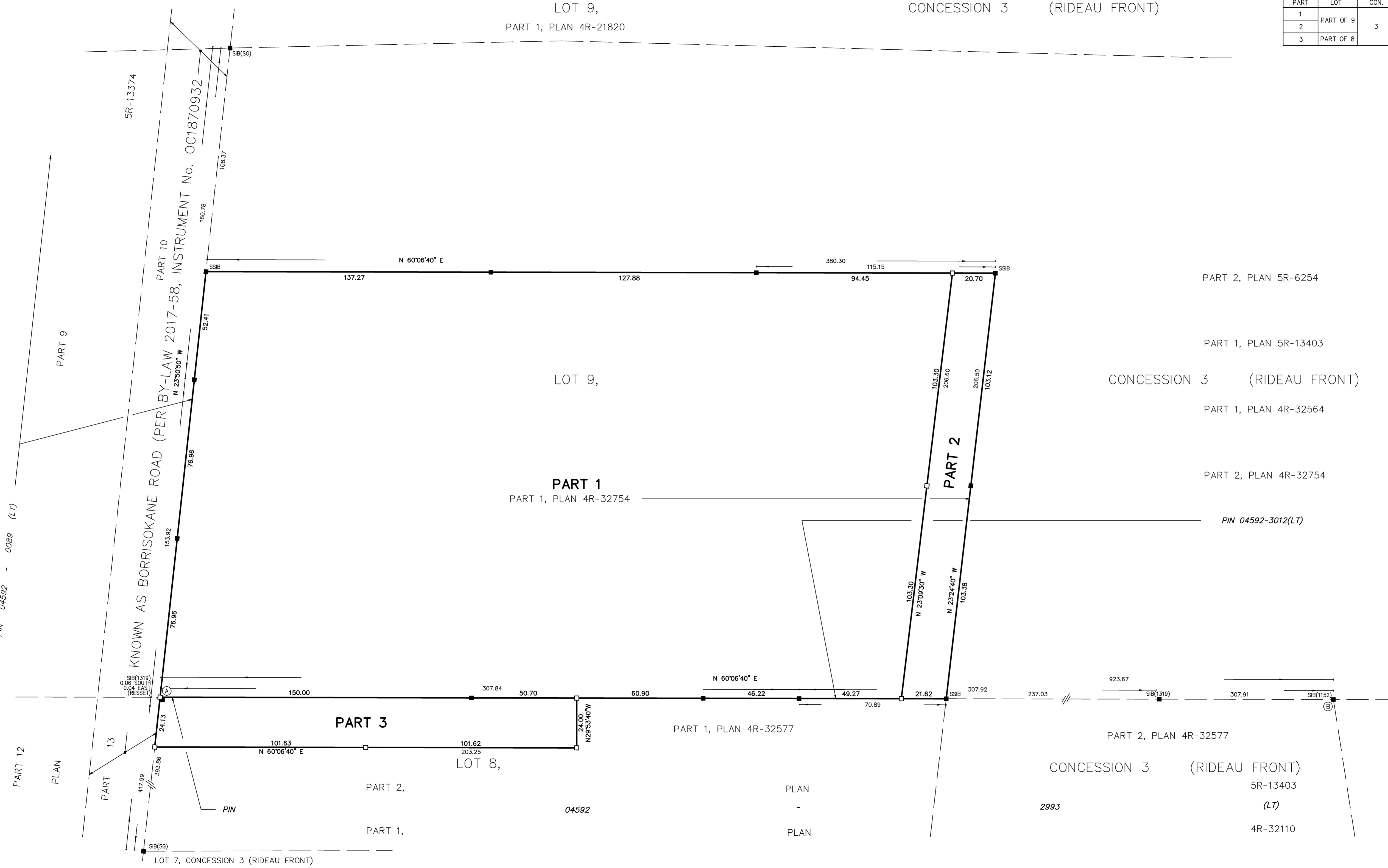
DATE \_\_\_\_\_ C.M. FOX  
ONTARIO LAND SURVEYOR

THIS PLAN OF SURVEY RELATES TO AOLS PLAN SUBMISSION FORM NUMBER XXXXXX

**J.D. BARNES LIMITED**  
LAND INFORMATION SPECIALISTS  
2430 DON REID DRIVE, SUITE 204, OTTAWA, ON K1H 1E1  
T: (613) 731-7244 F: (613) 731-8955 www.jdbarnes.com

DRAWN BY: NS	CHECKED BY: XX	REFERENCE NO.: 18-10-145-00
		DATE: 8/11/2020

FILE: G:\18-10-145\00\Drawing\Transfer Lands\18-10-145-00\_AccessEasement.dgn



PIN 04592 - 0089 (L-T)

KNOWN AS BORRISOKANE ROAD (PER BY-LAW 2017-58, INSTRUMENT No. OC1870932)

PART 12  
PLAN  
PART 13

PART 9

LOT 7, CONCESSION 3 (RIDEAU FRONT)

PART 1  
PART 1, PLAN 4R-32754

PART 3  
PART 1, PLAN 4R-32577

LOT 8,  
04592

PLAN  
-  
PLAN

PART 2

CONCESSION 3 (RIDEAU FRONT)  
2993  
5R-13403  
(LT)  
4R-32110

PART 2, PLAN 5R-6254

PART 1, PLAN 5R-13403

CONCESSION 3 (RIDEAU FRONT)

PART 1, PLAN 4R-32564

PART 2, PLAN 4R-32754

PIN 04592-3012(LT)

PART 2, PLAN 4R-32577