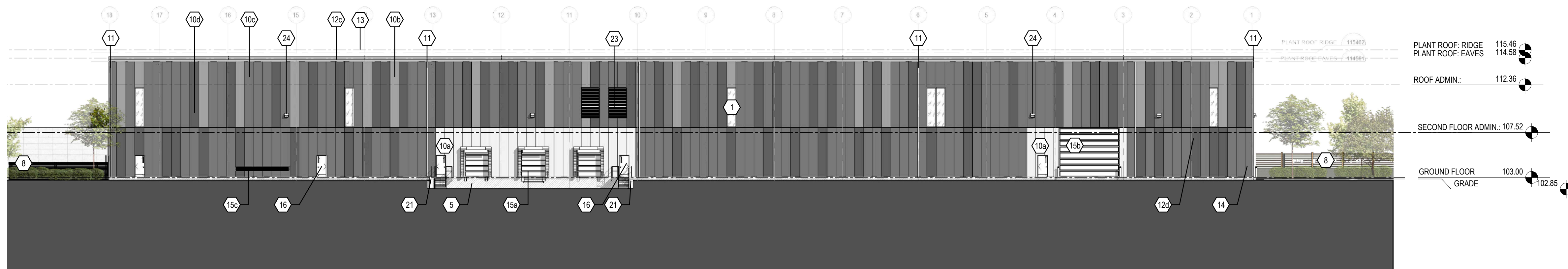
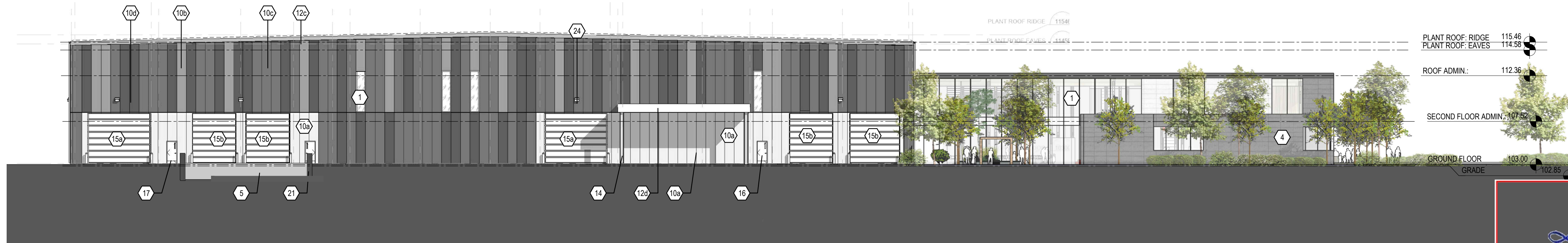




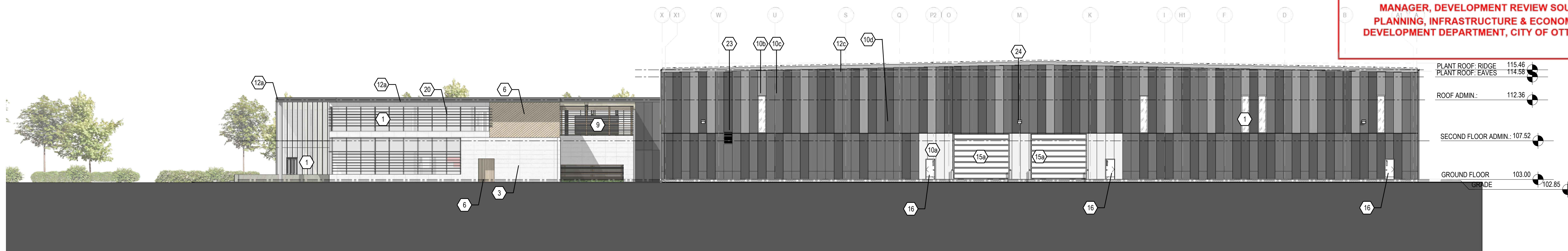
WEST ELEVATION
1 : 250



EAST ELEVATION
1 : 250



NORTH ELEVATION
1 : 250



SOUTH ELEVATION
1 : 250

- EXTERIOR FINISHES**
- 1 CLEAR ANODIZED ALUMINUM FRAMED CURTAIN WALL SYSTEM : CLEAR VISION GLASS
 - 2 CLEAR ANODIZED ALUMINUM FRAMED FULLY GLAZED ENTRY DOORS : CLEAR VISION GLASS
 - 3 PRECAST CONCRETE ARCHITECTURAL STONE : LIGHT GREY
 - 4 PRECAST CONCRETE ARCHITECTURAL STONE : MEDIUM GREY
 - 5 EXPOSED SMOOTH FACED CONCRETE FOUNDATION
 - 6 EXTERIOR SIMULATED WOOD COMPOSITE PANEL
 - 7 EXTERIOR SIMULATED WOOD COMPOSITE CLADDING AT VERTICAL SUNSHADE FINS
 - 8 TREATED HORIZONTAL SLAT WOOD PRIVACY FENCE: MAT WOOD FINISH
 - 9 TREATED HORIZONTAL SLAT WOOD ROOF TOP MECHANICAL SCREEN
 - 10 PREFINISHED INSULATED METAL PANEL :
- A: LIGHT GREY
- B: MEDIUM GREY
- C: CHARCOAL GREY
- D: DARK GREY
 - 11 PREFIN. METAL DOWNPIPE: LIGHT GREY REFER TO PLAN FOR ALL LOCATIONS
 - 12 PREFINISHED METAL FASCIA / EAVESTROUGH :
- A: AT CANOPY FASCIA: DARK GREY
- B: AT ROOF FASCIA: DARK GREY
- C: AT PLANT ROOF: MEDIUM GREY
- D: AT COVERED OPEN STORAGE: DARK GREY
 - 13 PREFINISHED METAL INSULATED PANEL SLOPED ROOF : MED. GREY
 - 14 PAINTED STEEL COLUMNS AT COVERED EXTERIOR STORAGE
 - 15 OVERHEAD DOORS:
- a) POLYCARB TRANSLUCENT & LIGHT GREY INSUL. METAL PANELS
- b) INSULATED (ROLL-UP) LIGHT GREY METAL PANEL
- c) INSUL. METAL PANEL SHUTTER: MED. GREY
 - 16 PREFINISHED INSULATED METAL DOOR : LIGHT GREY
 - 17 PREFINISHED INSULATED METAL DOOR : MEDIUM GREY
 - 18 PREFINISHED PERFORATED METAL PANEL ON PAINTED STEEL FRAMING PROUD OF WALL CLADDING
 - 19 BACK-LIT CHANNEL LETTER SIGNAGE MOUNTED AT FACE OF BUILDING - TO BE DETERMINED AT FUTURE SIGN PERMIT APPLICATION
 - 20 TREATED HORIZONTAL WOOD SLAT SUNSHADE SCREENS MOUNTED PROUD OF GLAZING SYSTEM.
 - 21 PRECAST CONCRETE RETAINING WALL WITH SLOPED CAP
 - 22 GALVANIZED STEEL GRATE STAIR & LANDING WITH GALV. STEEL TUBE RAILS.
 - 23 PREFIN. METAL MECHANICAL LOUVER: MED. GREY
 - 24 WALL PACK EXTERIOR LIGHTING

APPROVED
By Lily Xu at 3:34 pm, Jan 11, 2021

Lily Xu
LILY XU, MCIP, RPP
MANAGER, DEVELOPMENT REVIEW SOUTH
PLANNING, INFRASTRUCTURE & ECONOMIC
DEVELOPMENT DEPARTMENT, CITY OF OTTAWA

No.	Date	Empr./Objet
1	2019-11-07	COORDINATION
2	2019-11-15	COORDINATION
3	2019-11-18	COORDINATION
4	2019-12-16	COORDINATION
5	2020-04-24	SPC_PHASE-1_CITY_COMMENTS
6	2020-10-02	SPC_PHASE-2
7	2020-12-04	SITE_PLAN_REVISION_APPROVAL

Engineer / Trade Consultants
(Mechanical / Electrical)

WSP

Goodkey Weedmark
Consulting Engineers

DILFO
MECHANICAL | HVAC SERVICES
PLUMBING & HEATING

DRYCORE
ELECTRIC - ELECTRONIC

Engineer
(Structural)

CLELAND JARDINE
ENGINEERING LTD.

Landscape Architect

NAK
design strategies

Urban Planner

FOTENN
PLANNING+DESIGN

Engineer
(Civil)

DSEL
david schaeffer engineering ltd

Owner

ABIC
ADVANCED BUILDING INNOVATION COMPANY

Architect

Collectif d'architectes / Architects Collective

figurrr

Design Builder

BBS CONSTRUCTION (ONTARIO) LTD
1885 WOODWARD DRIVE
OTTAWA, ON K2C 0P9
CANADA (613) 226-8830 Fax: (613) 226-7709
www.bbsconstruction.ca

Droit d'auteur / Copyright
Ce dessin est sujet au droit d'auteur. Il ne peut être reproduit pour quelques intentions ou usages que ce soit, si ce n'est avec l'usage unique avec l'approbation de la signature et de l'estampe originale.
This drawing is subject to copyright. It is not to be reproduced for any purpose or by any means, and may only be used if it bears an original stamp and signature.

Scale / Echelle

ONTARIO ASSOCIATION OF ARCHITECTS

ROBERTO CAMPOS
LICENCE 7461

Note:
L'entrepreneur doit vérifier toutes les dimensions et informations sur le site et avant immédiatement l'architecte de toutes erreurs ou omissions.
Contractor shall verify all information and dimensions on site and immediately report any errors or omissions to the architect.

Project / Projet
ABIC OFFICE / ASSEMBLY PLANT

3713 BORRISOKANE RD.
Ottawa, Ontario

Drawn by / Dessiné par
GB, TS

No. projet / Project number
1944

Verified by / Vérifié par
RC

No. dessin / Drawing number
Revision / Révision

Echelle / Scale
1:250

Date de création du dessin / Drawing creation date
2019-10-23

A201