

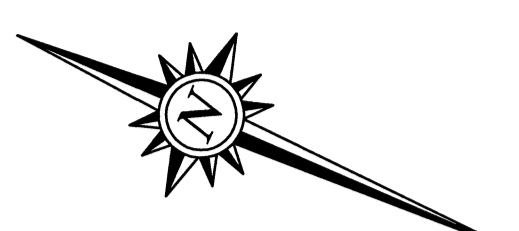
Metric Note
Distances and coordinates on this plan are in metres and can be converted to feet by dividing by 0.3048.

Distance Note
Distances shown on this plan are ground distances and can be converted to grid distances by multiplying by the combined scale factor of 0.99993.

Bearing Note
Bearings are grid, derived from part of the westerly limit of Bateman Drive having a bearing of N 23° 12' 40" W as shown on Plan SR-10015 are referred to the Central Meridian of MTM Zone 9 (76°30' West Longitude) Nad-83 (Original).

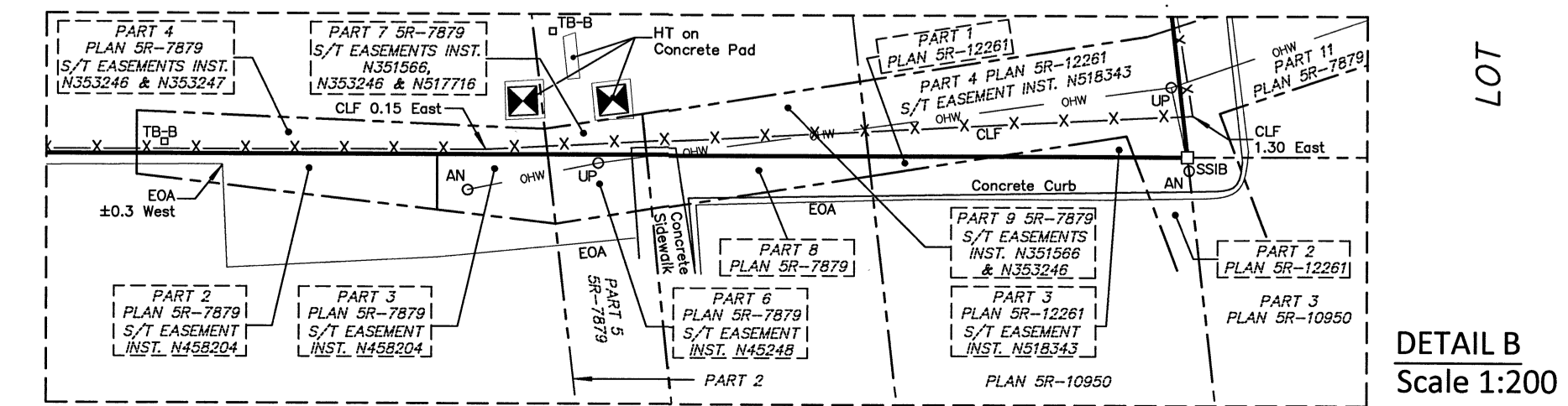
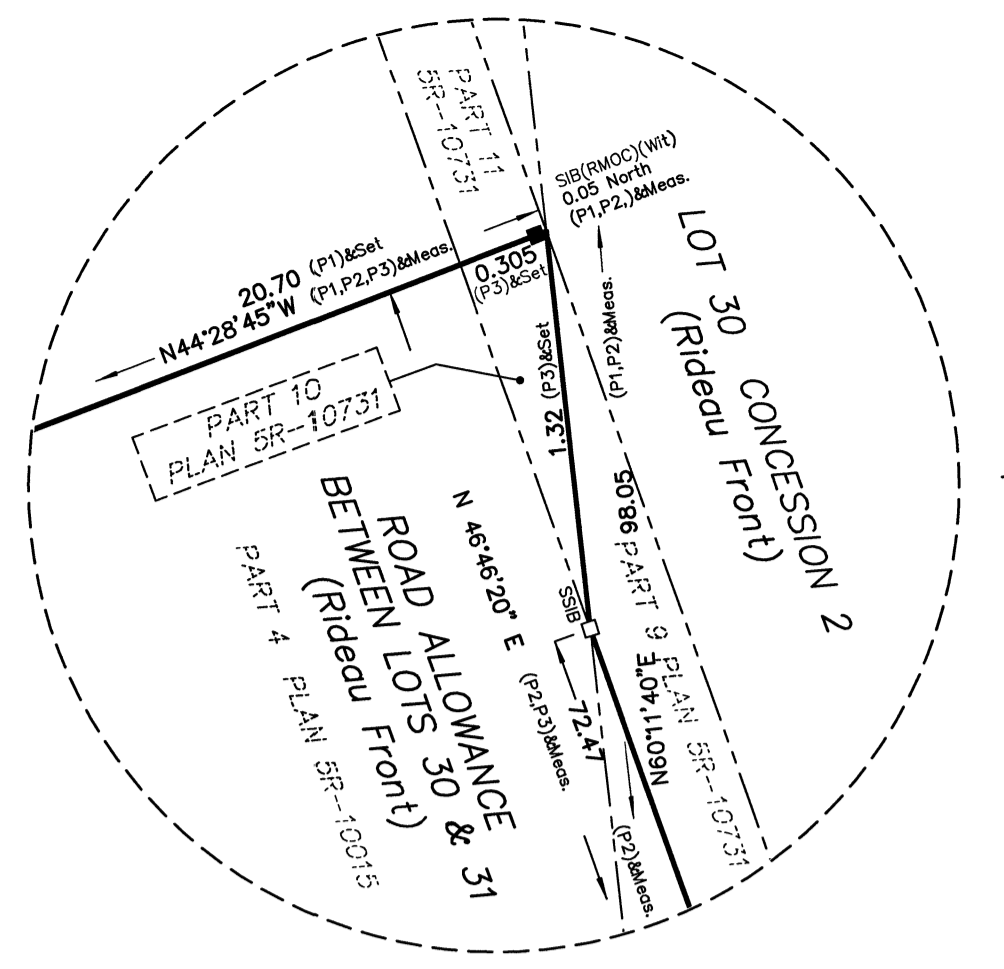
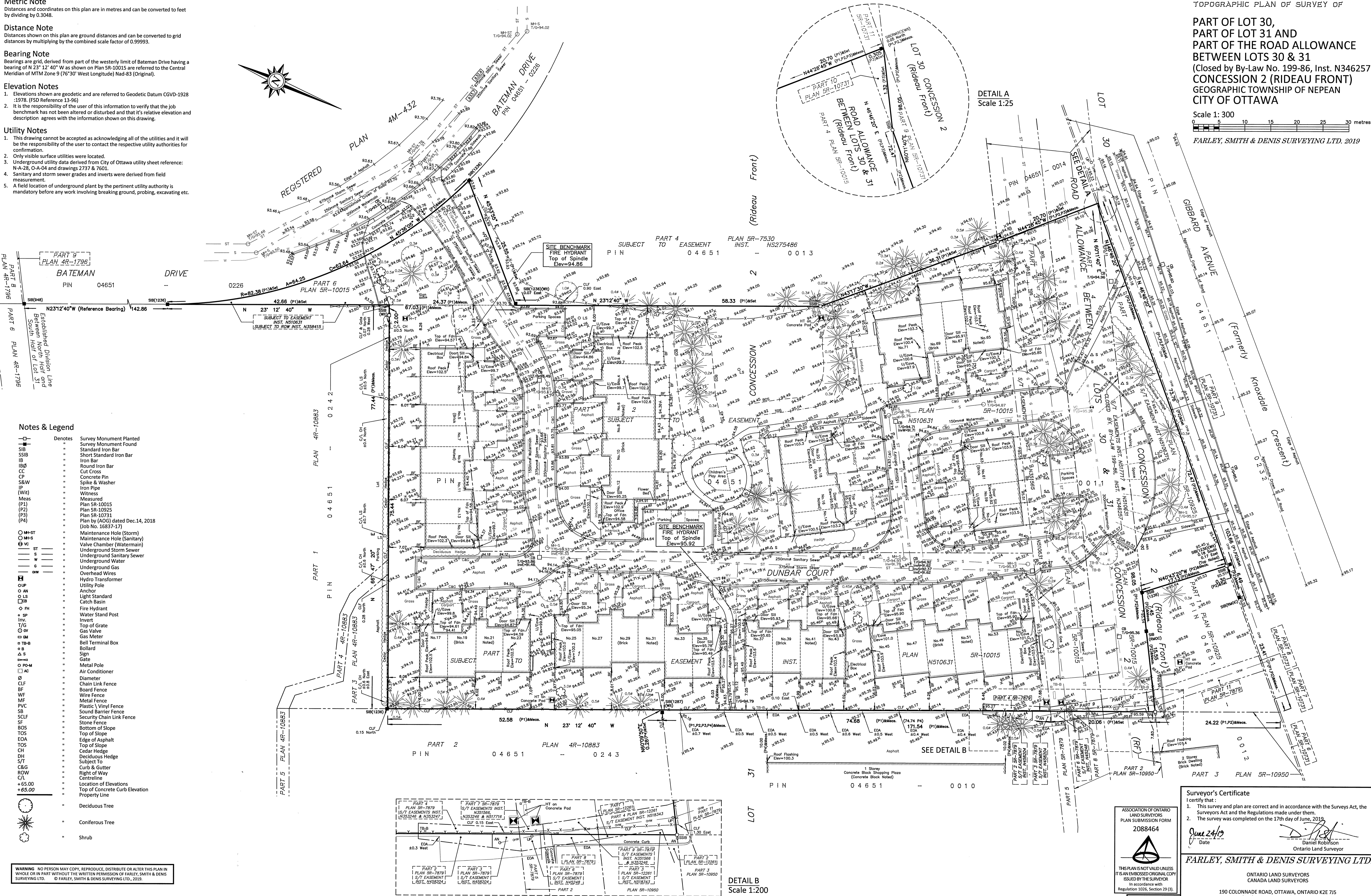
Elevation Notes
1. Elevations shown are geodetic and are referred to Geodetic Datum CGVD-1928-1978. (FSD Reference 13-96)
2. It is the responsibility of the user of this information to verify that the job benchmark has not been altered or disturbed and that its relative elevation and description agrees with the information shown on this drawing.

Utility Notes
1. This drawing cannot be accepted as acknowledging all of the utilities and it will be the responsibility of the user to contact the respective utility authorities for confirmation.
2. Only visible surface utilities were located.
3. Underground utility data derived from City of Ottawa utility sheet reference: N-A-28, O-A-04 and drawings 2737 & 7601.
4. Sanitary and storm sewer grades and inverts were derived from field measurement.
5. A field location of underground plant by the pertinent utility authority is mandatory before any work involving breaking ground, probing, excavating etc.



**PART OF LOT 30,
PART OF LOT 31 AND
PART OF THE ROAD ALLOWANCE
BETWEEN LOTS 30 & 31
(Closed by By-Law No. 199-86, Inst. N346257)
CONCESSION 2 (RIDEAU FRONT)
GEOGRAPHIC TOWNSHIP OF NEPEAN
CITY OF OTTAWA**

Scale 1:300
0 5 10 15 20 25 30 metres
FARLEY, SMITH & DENIS SURVEYING LTD. 2019



Notes & Legend

Denotes	Survey Monument Planted
SIB	Survey Monument Found
SSIB	Standard Iron Bar
IB	Iron Bar
IBP	Round Iron Bar
CC	Cut Cross
CP	Concrete Pin
S&W	Spike & Washer
IP	Iron Pipe
(Wit)	Witness
Meas	Measured
(P1)	Plan SR-10015
(P2)	Plan SR-10925
(P3)	Plan SR-10731
(P4)	Plan by (AOG) dated Dec. 14, 2018 (Job No. 16837-17)
○ M+ST	Maintenance Hole (Storm)
○ M+S	Maintenance Hole (Sanitary)
○ VC	Valve Chamber (Watermain)
— ST	Underground Storm Sewer
— S	Underground Sanitary Sewer
— W	Underground Water
— G	Underground Gas
—	Overhead Wires
—	Hydro Transformer
—	Utility Pole
—	Anchor
—	Light Standard
—	Catch Basin
—	Fire Hydrant
—	Water Stand Post
—	Invert
—	Top of Grate
—	Gas Valve
—	Gas Meter
—	Bell Terminal Box
—	Bollard
—	Sign
—	Gate
—	Metal Pole
—	Air Conditioner
—	Diameter
—	Chain Link Fence
—	Board Fence
—	Wire Fence
—	Metal Fence
—	Plastic/Vinyl Fence
—	Sound Barrier Fence
—	Security Chain Link Fence
—	Stone Fence
—	Bottom of Slope
—	Top of Slope
—	Edge of Asphalt
—	Top of Slope
—	Cedar Hedge
—	Deciduous Hedge
—	Subject To
—	Curb & Gutter
—	Right of Way
—	Centreline
+65.00	Location of Elevations
+65.00	Top of Concrete Curb Elevation
—	Property Line
—	Deciduous Tree
—	Coniferous Tree
—	Shrub

Surveyor's Certificate
I certify that:
1. This survey and plan are correct and in accordance with the Surveys Act, the Surveyors Act and the Regulations made under them.
2. The survey was completed on the 17th day of June, 2019.

Date: June 24/19
Daniel Robinson
Ontario Land Surveyor

FARLEY, SMITH & DENIS SURVEYING LTD.

ASSOCIATION OF ONTARIO LAND SURVEYORS
PLAN SUBMISSION FORM
2088464

THIS PLAN IS NOT VALID UNLESS IT IS AN EMBOSSED ORIGINAL COPY ISSUED BY THE SURVEYOR
In accordance with Regulation 1016, Section 29 (3).
FILE No.: 207-19

ONTARIO LAND SURVEYORS
CANADA LAND SURVEYORS
190 COLONNADE ROAD, OTTAWA, ONTARIO K2E 7J5
TEL: (613) 727-8226 FAX: (613) 727-1826

WARNING: NO PERSON MAY COPY, REPRODUCE, DISTRIBUTE OR ALTER THIS PLAN IN WHOLE OR IN PART WITHOUT THE WRITTEN PERMISSION OF FARLEY, SMITH & DENIS SURVEYING LTD. © FARLEY, SMITH & DENIS SURVEYING LTD., 2019.