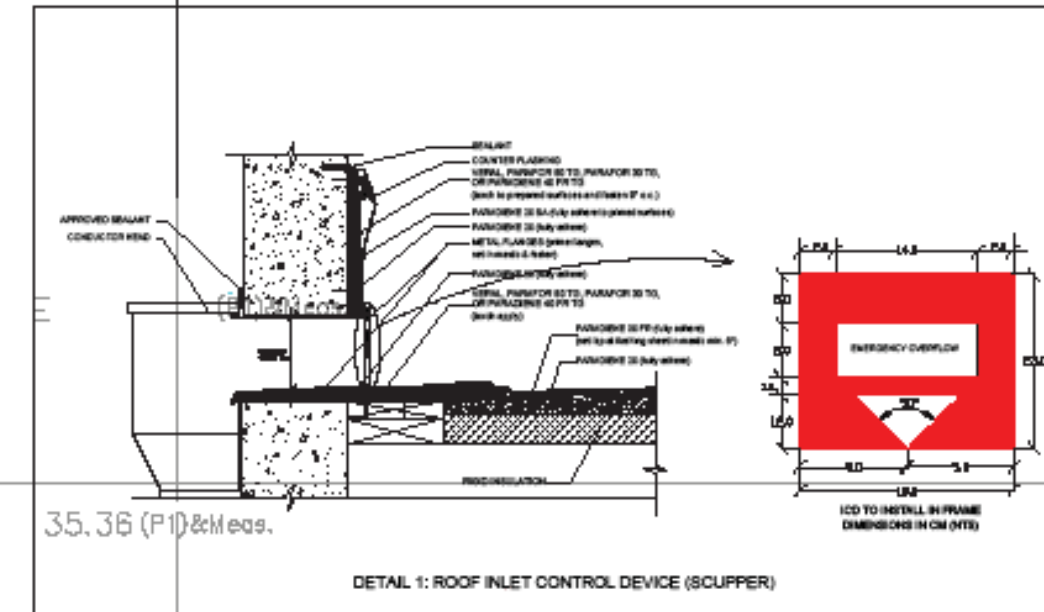


# Replacement Tree Specifications

Tree 1, Sugar maple – columnar (*Acer saccharum*), soil volume requirement: 15 m<sup>3</sup>

The tree must be a minimum of 50 mm in diameter measured no less than 15 cm above ground level and planted as per City of Ottawa Tree Planting Specifications

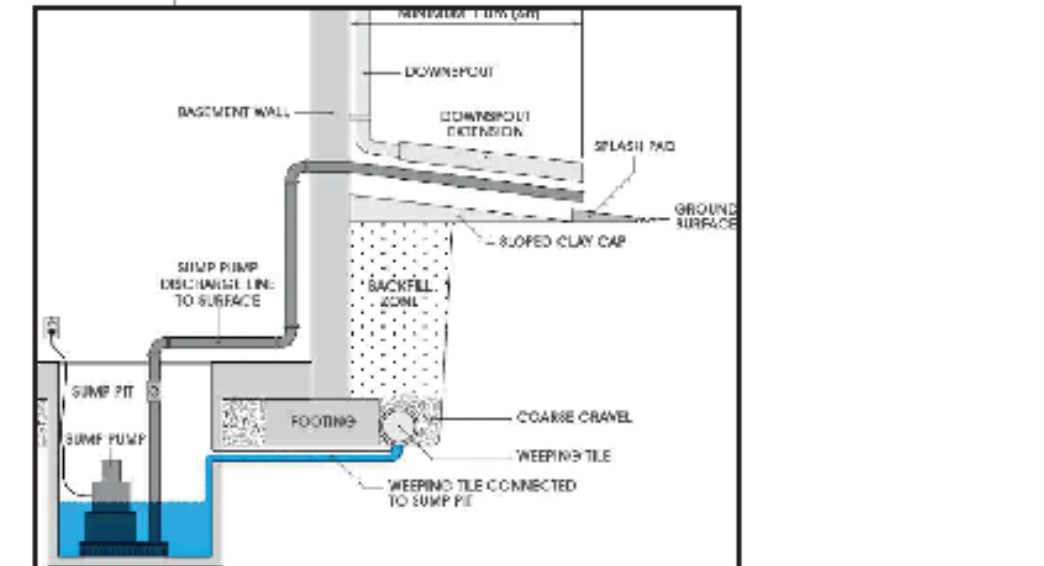
Tree <sup>1</sup>	Species	Diameter at breast height (dbh)	Ownership <sup>2</sup>	Condition	Action
1	Showy mountain-ash ( <i>Sorbus decora</i> )	14 cm	Private	Good	Remove – conflict with new building
2	American elm ( <i>Ulmus americana</i> )	11 cm	Private	Good	Remove – conflict with new building
3	American elm ( <i>Ulmus americana</i> )	10 cm	Private	Fair	Remove – conflict with new building
4	American elm ( <i>Ulmus americana</i> )	22 cm	Private	Good	Remove – conflict with new building



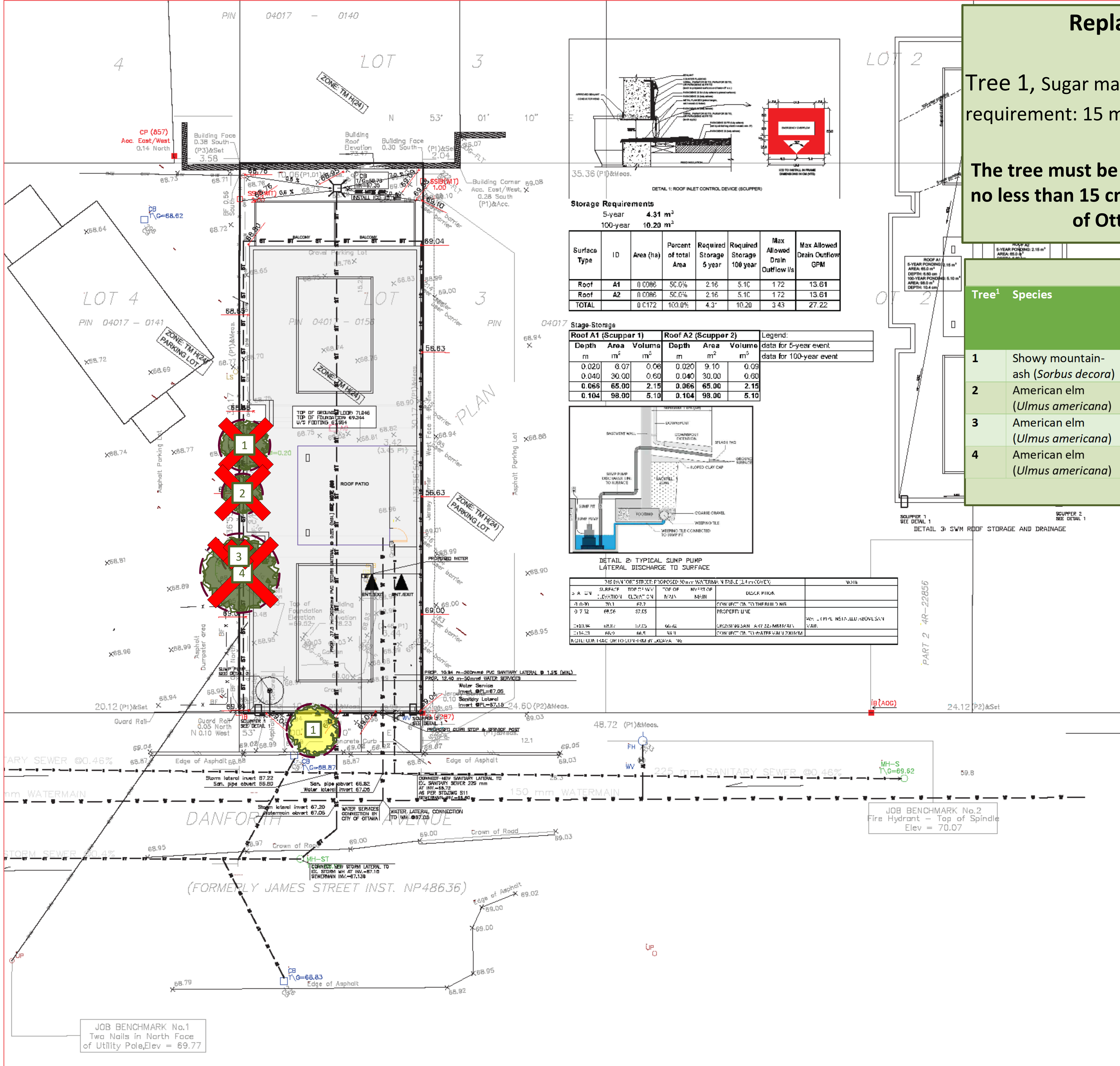
Storage Requirements  
 5-year 4.31 m<sup>3</sup>  
 100-year 10.20 m<sup>3</sup>

Surface Type	ID	Area (ha)	Percent of total Area	Required Storage 5 year	Required Storage 100 year	Max Allowed Drain Outflow l/s	Max Allowed Drain Outflow GPM
Roof	A1	0.006	50.0%	2.16	5.10	1.72	13.61
Roof	A2	0.006	50.0%	2.16	5.10	1.72	13.61
TOTAL		0.012	100.0%	4.32	10.20	3.43	27.22

Roof A1 (Scupper 1)			Roof A2 (Scupper 2)			Legend:	
Depth m	Area m <sup>2</sup>	Volume m <sup>3</sup>	Depth m	Area m <sup>2</sup>	Volume m <sup>3</sup>	data for 5-year event	data for 100-year event
0.020	6.07	0.06	0.020	9.10	0.09		
0.040	30.00	0.60	0.040	30.00	0.60		
0.066	65.00	2.15	0.066	65.00	2.15		
0.104	98.00	5.10	0.104	98.00	5.10		



DATE	DESCRIPTION	BY	CHKD
2021.08.13	ISSUED FOR PERMIT	Z.M.	Z.M.
2021.08.13	REVISED FOR COMMENTS	Z.M.	Z.M.
2021.08.13	REVISED FOR COMMENTS	Z.M.	Z.M.
2021.08.13	REVISED FOR COMMENTS	Z.M.	Z.M.



**LEGEND**

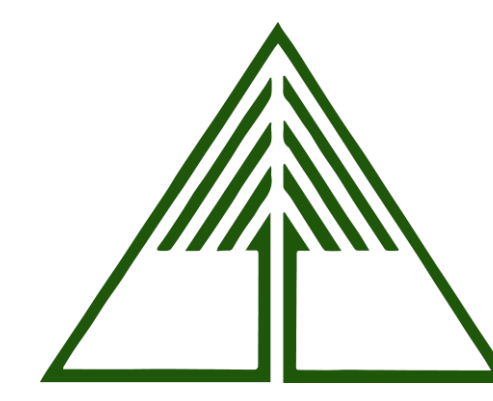
- 56.63 PROPOSED ELEVATION
- 57.87 EXISTING ELEVATION
- U/S FOOTING PROPOSED UNDERSIDE OF CONCRETE FOOTING ELEVATION
- PROPOSED 50mmØ WATER SERVICES COPPER TYPE "K"
- PROPOSED 150mmØ PVC SANITARY LATERAL SERVICES @ 1% (MIN.) SLOPE
- PROPOSED 200mmØ PVC STORM SEWER
- EXISTING UNDERGROUND POWER LINE/CONDUIT
- EXISTING CATCH BASIN
- EXISTING STORM MANHOLE
- EXISTING SANITARY MANHOLE
- EXISTING WATER VALVE
- EXISTING FIRE HYDRANT
- EXISTING UTILITY POLE
- PROPOSED CURB STOP & SERVICE POST
- PROPOSED METER & REMOTE METER
- ROOF DRAIN
- PROPERTY LINE
- D4 DRAIN

0 1 2 3 4 5 10 m

Drawn by:	Z.M.	ARCH-NOVA Design Inc. 45 Banner Road NEPEAN ON K2H 8X5 613-702-3403 contact@archnova.ca
Checked by:	Z.M.	
Approved by:	Z.M.	<b>Servicing &amp; Grading Plan</b> Location 349 DANFORTH AVENUE, OTTAWA, ON Owner NAME ADDRESS Project No CW-03-20 Date September 2020 Drawing No W-01 Scale 1:100
Rev 1	Date Description	
Rev 2	Date Description	
Rev 3	Date Description	



Note that the tree layer has been added to the original Servicing and Grading plan supplied by the client in pdf format. This layer refers to the trees only, and the original Servicing and Grading plan has not been altered in the process.



Tree Conservation Report and Landscape Plan– 349 Danforth  
 Tree layer prepared by Dendron Forestry Services  
 Version 1.0, August 13, 2021  
 For more information, please contact info@dendronforestry.ca