

TOPOGRAPHICAL PLAN OF SURVEY

PART OF LOT 3  
REGISTERED PLAN 204  
CITY OF OTTAWA

Prepared by Annis, O'Sullivan, Vollebakk Ltd.

Scale 1 : 150



**Metric**  
DISTANCES SHOWN ON THIS PLAN ARE IN METRES AND CAN BE CONVERTED TO FEET BY DIVIDING BY 0.3048

**Surveyor's Certificate**

I CERTIFY THAT:

1. This survey and plan are correct and in accordance with the Surveys Act, the Surveyors Act and the regulations made under them.
2. The survey was completed on the 8th day of June, 2020.

*[Signature]*  
Date 24/7/20  
T. Hartwick  
Ontario Land Surveyor

**Notes & Legend**

Denotes

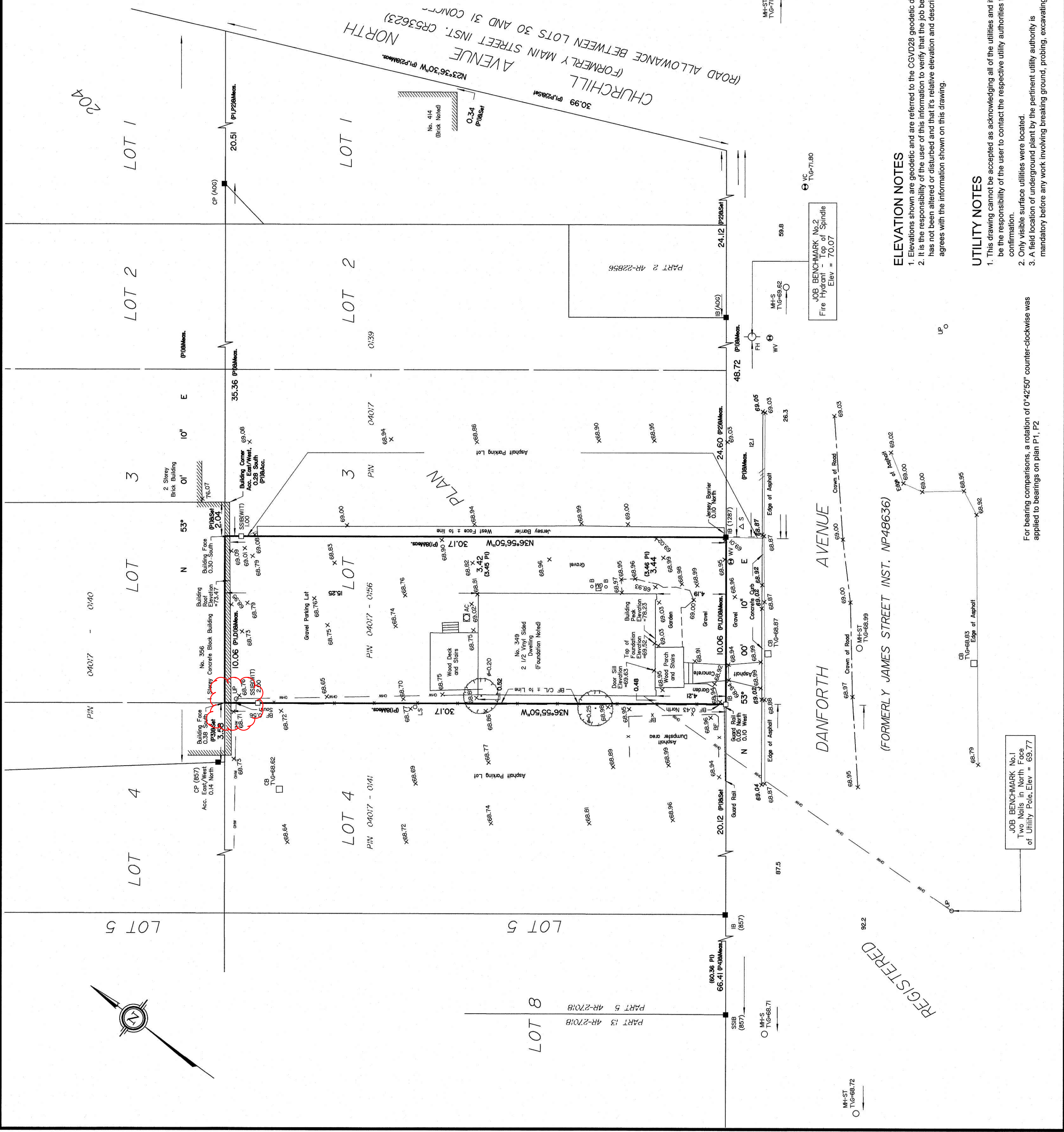
□	Survey Monument Planted
□	Survey Monument Found
□	Standard Iron Bar
□	Short Standard Iron Bar
□	Iron Bar
□	Cut Cross
□	Concrete Pin
□	Round Iron Bar
□	Witness
□	Measured
□	(AOG)
□	(P1)
□	(P2)
□	(P3)
□	(P4)
□	(DI)
□	Inst. CR618620
□	Maintenance Hole (Storm Sewer)
□	Maintenance Hole (Sanitary)
□	Valve Chamber (Watermain)
□	Utility Pole
□	Light Standard
□	Catch Basin
□	Fire Hydrant
□	Water Valve
□	Top of Grate
□	Gas Meter
□	Deciduous Tree
□	Overhead Wires
□	Sign
□	Board Fence
□	Air Conditioner
□	Diameter
□	Location of Elevations
□	Top of Concrete Curb Elevation
□	Centreline
□	Bollard
□	Acc.

ASSOCIATION OF ONTARIO  
LAND SURVEYORS  
PLAN SUBMISSION FORM  
2127696

THIS PLAN IS NOT VALID UNLESS IT IS AN EMBOSSED ORIGINAL COPY ISSUED BY THE SURVEYOR in accordance with Regulation 1026, Section 29 (3).

Bearings are grid, derived from Can-Net 2016 Real Time Network GPS observations, and are referred to MTM Zone 9 (76°30' West Longitude) NAD-83 (original).

© Annis, O'Sullivan, Vollebakk Ltd. 2020. THIS PLAN IS PROTECTED BY COPYRIGHT.  
**ANNIS, O'SULLIVAN, VOLLEBEKK LTD.**  
14 Concourse Gate, Suite 500  
Nepean, Ont. K2E 7S6  
Phone: (613) 727-0850 / Fax: (613) 727-1079  
Email: [info@annisov.com](mailto:info@annisov.com)  
Ontario  
Land Surveyors Job No. 20615-20 Ottawa Contractors Plan 204 POS D4 CA



**ELEVATION NOTES**  
1. Elevations shown are geodetic and are referred to the CGVD28 geodetic datum.  
2. It is the responsibility of the user of this information to verify that the job benchmark has not been altered or disturbed and that its relative elevation and description agrees with the information shown on this drawing.

**UTILITY NOTES**  
1. This drawing cannot be accepted as acknowledging all of the utilities and it will be the responsibility of the user to contact the respective utility authorities for confirmation.  
2. Only visible surface utilities were located.  
3. A field location of underground plant by the pertinent utility authority is mandatory before any work involving breaking ground, probing, excavating etc.

For bearing comparisons, a rotation of 0°42'50" counter-clockwise was applied to bearings on plan P1, P2

JOB BENCHMARK No.1  
Two Nails in North Face  
of Utility Pole. Elev = 69.77

JOB BENCHMARK No.2  
Fire Hydrant - Top of Spindle  
Elev = 70.07

REGISTERED