

TOPOGRAPHICAL PLAN OF SURVEY

PART OF LOT 3  
REGISTERED PLAN 204  
CITY OF OTTAWA

Prepared by Annis, O'Sullivan, Vollebek Ltd.

Scale 1 : 150



Metric

DISTANCES SHOWN ON THIS PLAN ARE IN METRES AND CAN BE CONVERTED TO FEET BY DIVIDING BY 0.3048

Surveyor's Certificate

I CERTIFY THAT:

- This survey and plan are correct and in accordance with the Surveys Act, the Surveyors Act and the regulations made under them.
- The survey was completed on the 23rd day of June, 2021.

June 23/21  
Date

*T. Hartwick*  
T. Hartwick  
Ontario Land Surveyor

Notes & Legend

| Denotes |                                      |
|---------|--------------------------------------|
|         | Survey Monument Planted              |
|         | Survey Monument Found                |
|         | Standard Iron Bar                    |
|         | Short Standard Iron Bar              |
|         | Iron Bar                             |
|         | Cut Cross                            |
|         | Concrete Pin                         |
|         | Round Iron Bar                       |
|         | Witness                              |
|         | Measured                             |
|         | Annis, O'Sullivan, Vollebek Ltd.     |
|         | (AOG) Plan, Dated December 1st, 2003 |
|         | 4R-22856                             |
|         | (1692) Plan, Dated October 2nd, 2007 |
|         | 4R-27018                             |
|         | Inst. CR618520                       |
|         | Maintenance Hole (Storm Sewer)       |
|         | Maintenance Hole (Sanitary)          |
|         | Valve Chamber (Watermain)            |
|         | Utility Pole                         |
|         | Light Standard                       |
|         | Catch Basin                          |
|         | Fire Hydrant                         |
|         | Water Valve                          |
|         | Top of Grate                         |
|         | Gas Meter                            |
|         | Deciduous Tree                       |
|         | Overhead Wires                       |
|         | Sign                                 |
|         | Board Fence                          |
|         | Air Conditioner                      |
|         | Diameter                             |
|         | Location of Elevations               |
|         | Top of Concrete Curb Elevation       |
|         | Centreline                           |
|         | Bollard                              |
|         | Accepted                             |

ASSOCIATION OF ONTARIO  
LAND SURVEYORS  
PLAN SUBMISSION FORM

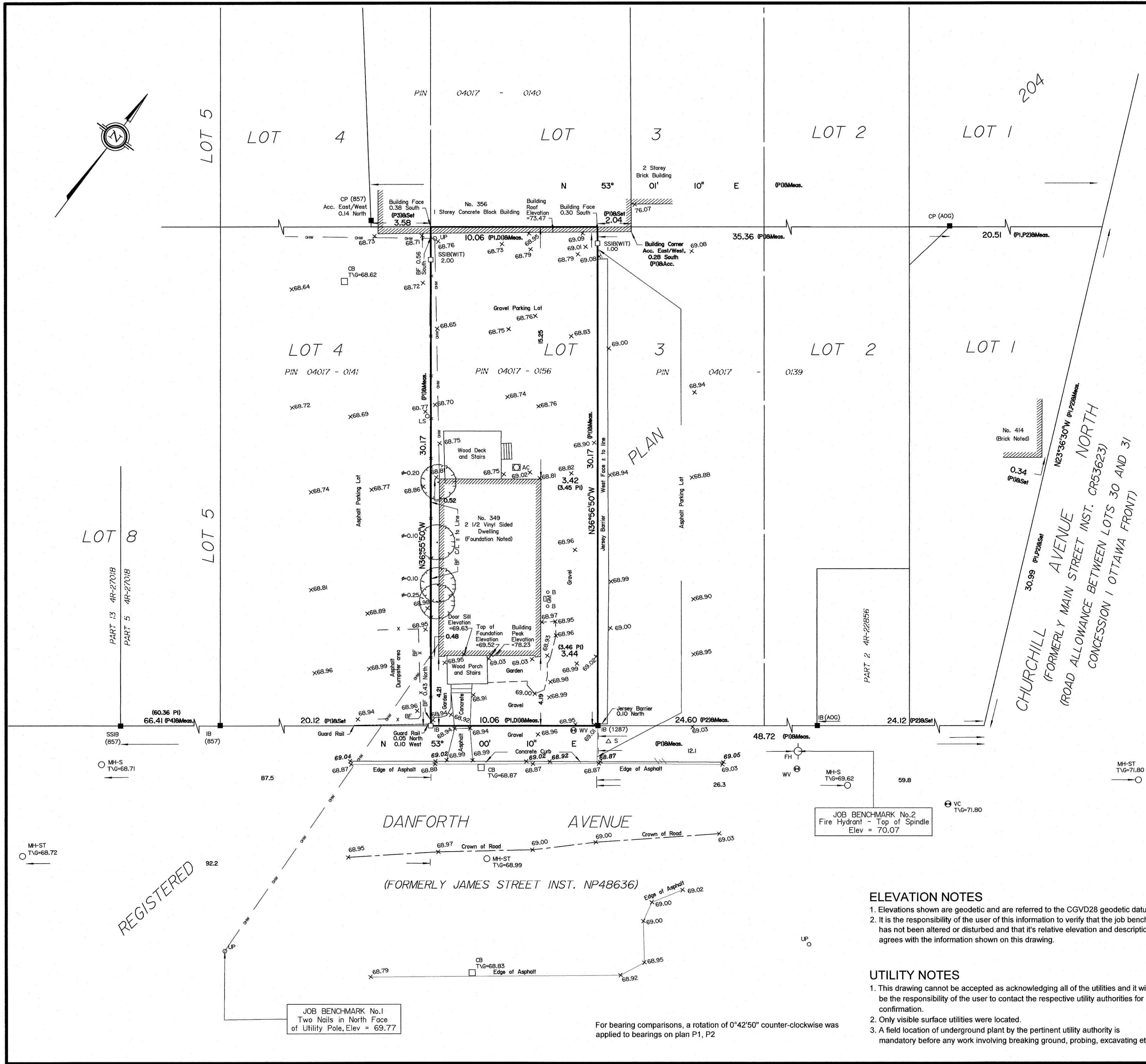
2127696



THIS PLAN IS NOT VALID UNLESS  
IT IS AN EMBOSSED ORIGINAL  
COPY ISSUED BY THE SURVEYOR  
In accordance with  
Regulation 1026, Section 29 (3).

Bearings are grid, derived from Can-Net 2016 Real Time Network GPS observations, and are referred to MTM Zone 9 (76°30' West Longitude) NAD-83 (original).

© Annis, O'Sullivan, Vollebek Ltd, 2020. "THIS PLAN IS PROTECTED BY COPYRIGHT"  
**ANNIS, O'SULLIVAN, VOLLEBEK LTD.**  
14 Concourse Gate, Suite 500  
Nepean, Ont. K2E 7S6  
Phone: (613) 727-0850 / Fax: (613) 727-1079  
Email: Nepean@aovltd.com  
Ontario Land Surveyors Job No. 20615-20 Ottawa Contractors P113 PLAN 204 POS D5 | CA



ELEVATION NOTES

- Elevations shown are geodetic and are referred to the CGVD28 geodetic datum.
- It is the responsibility of the user of this information to verify that the job benchmark has not been altered or disturbed and that its relative elevation and description agrees with the information shown on this drawing.

UTILITY NOTES

- This drawing cannot be accepted as acknowledging all of the utilities and it will be the responsibility of the user to contact the respective utility authorities for confirmation.
- Only visible surface utilities were located.
- A field location of underground plant by the pertinent utility authority is mandatory before any work involving breaking ground, probing, excavating etc.

For bearing comparisons, a rotation of 0°42'50" counter-clockwise was applied to bearings on plan P1, P2

JOB BENCHMARK No.1  
Two Nails in North Face  
of Utility Pole, Elev = 69.77

JOB BENCHMARK No.2  
Fire Hydrant - Top of Spindle  
Elev = 70.07

REGISTERED

N:\2020\20615-20\_Ottawa Contractors P113 PLAN 204 POS D5.dwg