

PART OF LOT 3
REGISTERED PLAN 204
CITY OF OTTAWA

Prepared by Annis, O'Sullivan, Vollebakk Ltd.

Scale 1 : 150



Metric

DISTANCES SHOWN ON THIS PLAN ARE IN METRES AND CAN BE CONVERTED TO FEET BY DIVIDING BY 0.3048

Surveyor's Certificate

I CERTIFY THAT:

- This survey and plan are correct and in accordance with the Surveys Act, the Surveyors Act and the regulations made under them.
- The survey was completed on the 23rd day of June, 2021.

June 23/21
Date

T. Hartwick
T. Hartwick
Ontario Land Surveyor

Notes & Legend

Denotes	
□	Survey Monument Planted
■	Survey Monument Found
SIB	Standard Iron Bar
SSIB	Short Standard Iron Bar
IB	Iron Bar
CC	Cut Cross
CP	Concrete Pin
IB#	Round Iron Bar
(WIT)	Witness
Meas.	Measured
(AOG)	Annis, O'Sullivan, Vollebakk Ltd.
(P1)	(AOG) Plan, Dated December 1st, 2003
(P2)	4R-22856
(P3)	(1692) Plan, Dated October 2nd, 2007
(P4)	4R-27018
(DI)	Inst. CR618520
○ MH-ST	Maintenance Hole (Storm Sewer)
○ MH-S	Maintenance Hole (Sanitary)
⊕ VC	Valve Chamber (Watermain)
○ UP	Utility Pole
○ LS	Light Standard
□ CB	Catch Basin
⊕ FH	Fire Hydrant
⊕ WV	Water Valve
T/G	Top of Grate
⊕ GM	Gas Meter
○	Deciduous Tree
— OW	Overhead Wires
△ S	Sign
BF	Board Fence
□ AC	Air Conditioner
∅	Diameter
+ 65.00	Location of Elevations
+ 65.00	Top of Concrete Curb Elevation
C/L	Centreline
○ B	Bollard
Acc.	Accepted

ASSOCIATION OF ONTARIO
LAND SURVEYORS
PLAN SUBMISSION FORM

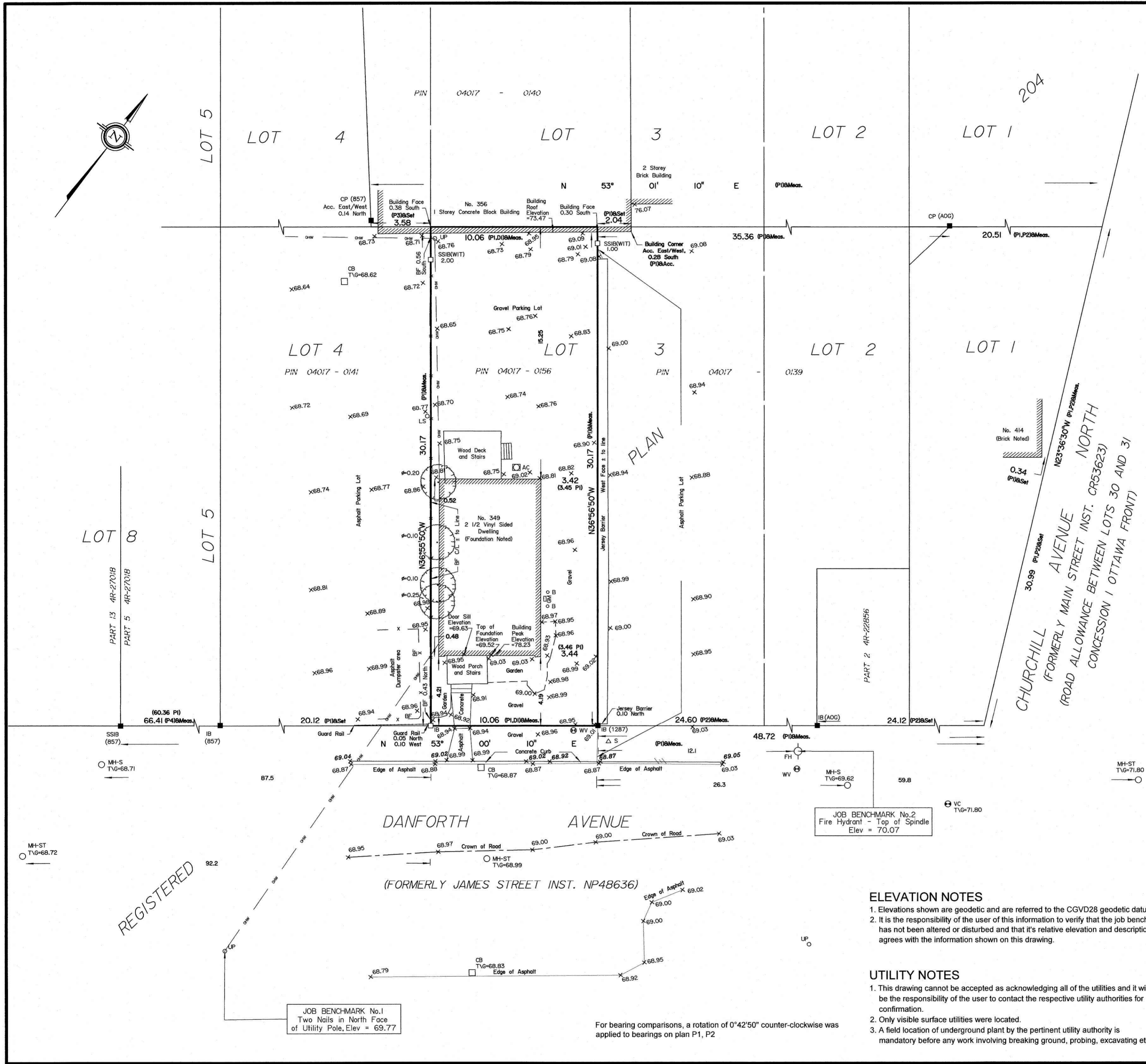
2127696



THIS PLAN IS NOT VALID UNLESS
IT IS AN EMBOSSED ORIGINAL
COPY ISSUED BY THE SURVEYOR
In accordance with
Regulation 1026, Section 29 (3).

Bearings are grid, derived from Can-Net 2016 Real Time Network GPS observations, and are referred to MTM Zone 9 (76°30' West Longitude) NAD-83 (original).

© Annis, O'Sullivan, Vollebakk Ltd, 2020. "THIS PLAN IS PROTECTED BY COPYRIGHT"
ANNIS, O'SULLIVAN, VOLLEBEKK LTD.
14 Concourse Gate, Suite 500
Nepean, Ont. K2E 7S6
Phone: (613) 727-0850 / Fax: (613) 727-1079
Email: Nepean@aovltd.com
Ontario Land Surveyors Job No. 20615-20 Ottawa Contractors P113 PLAN 204 POS D5 | CA



ELEVATION NOTES

- Elevations shown are geodetic and are referred to the CGVD28 geodetic datum.
- It is the responsibility of the user of this information to verify that the job benchmark has not been altered or disturbed and that its relative elevation and description agrees with the information shown on this drawing.

UTILITY NOTES

- This drawing cannot be accepted as acknowledging all of the utilities and it will be the responsibility of the user to contact the respective utility authorities for confirmation.
- Only visible surface utilities were located.
- A field location of underground plant by the pertinent utility authority is mandatory before any work involving breaking ground, probing, excavating etc.

JOB BENCHMARK No.1
Two Nails in North Face
of Utility Pole, Elev = 69.77

For bearing comparisons, a rotation of 0°42'50" counter-clockwise was applied to bearings on plan P1, P2

N:\2020\20615-20_Ottawa Contractors P113 PLAN 204 POS D5.dwg