

TOPOGRAPHICAL PLAN OF SURVEY  
**LOT 9**  
**REGISTERED PLAN 35**  
**(EAST HINCHEY AVENUE LOTS)**  
**CITY OF OTTAWA**

Surveyed by Annis, O'Sullivan, Vollebakk Ltd.

Scale 1 : 150



**Metric**

DISTANCES SHOWN ON THIS PLAN ARE IN METRES AND CAN BE CONVERTED TO FEET BY DIVIDING BY 0.3048

**Surveyor's Certificate**

I CERTIFY THAT :

1. This survey and plan are correct and in accordance with the Surveys Act and the Surveyors Act and the regulations made under them.
2. The survey was completed on the 14th day of February, 2020.

Feb 14/20  
 Date

T. Hartwick  
 Ontario Land Surveyor

**Notes & Legend**

Denotes	
□	Survey Monument Planted
■	Survey Monument Found
SSIB	Short Standard Iron Bar
IB	Iron Bar
CP	Concrete Pin
Meas.	Measured
(AOG)	Annis, O'Sullivan, Vollebakk Ltd.
(P)	Registered Plan 35
(P1)	(857) Plan August 9, 2010
(P2)	(687) Plan November 25, 1985
(P3)	Plan 4R-28556
RWT	Retaining Wall Timber
RWS	Retaining Wall Stone
OHW	Overhead Wires
○ UP	Utility Pole
□ CB	Catch Basin
□ CB-I	Catch Basin Inlet
○ FH	Fire Hydrant
□ GM	Gas Meter
△ S	Sign
CLF	Chain Link Fence
BF	Board Fence
□ AC	Air Conditioner
○	Shrub
○	Deciduous Tree
★	Coniferous Tree
○ MH-ST	Maintenance Hole (Storm Sewer)
○ MH-S	Maintenance Hole (Sanitary)
— ST —	Underground Storm Sewer
— S —	Underground Sanitary Sewer
∅	Diameter
+ 65.00	Location of Elevation
+ 65.00*	Top of Concrete Curb Elevation
+ 65.00**	Top of Retaining Wall Elevation
C/L	Centreline
—	Property Line

ASSOCIATION OF ONTARIO  
 LAND SURVEYORS  
 PLAN SUBMISSION FORM  
**2114251**

THIS PLAN IS NOT VALID UNLESS IT IS AN EMBOSSED ORIGINAL COPY ISSUED BY THE SURVEYOR In accordance with Regulation 1028, Section 29 (3).

**UTILITY NOTES**

1. This drawing cannot be accepted as acknowledging all of the utilities and it will be the responsibility of the user to contact the respective utility authorities for confirmation.
2. Only visible surface utilities were located.
3. Underground utility data derived from City of Ottawa utility sheet reference
4. A field location of underground plant by the pertinent utility authority is mandatory before any work involving breaking ground, probing, excavating etc.

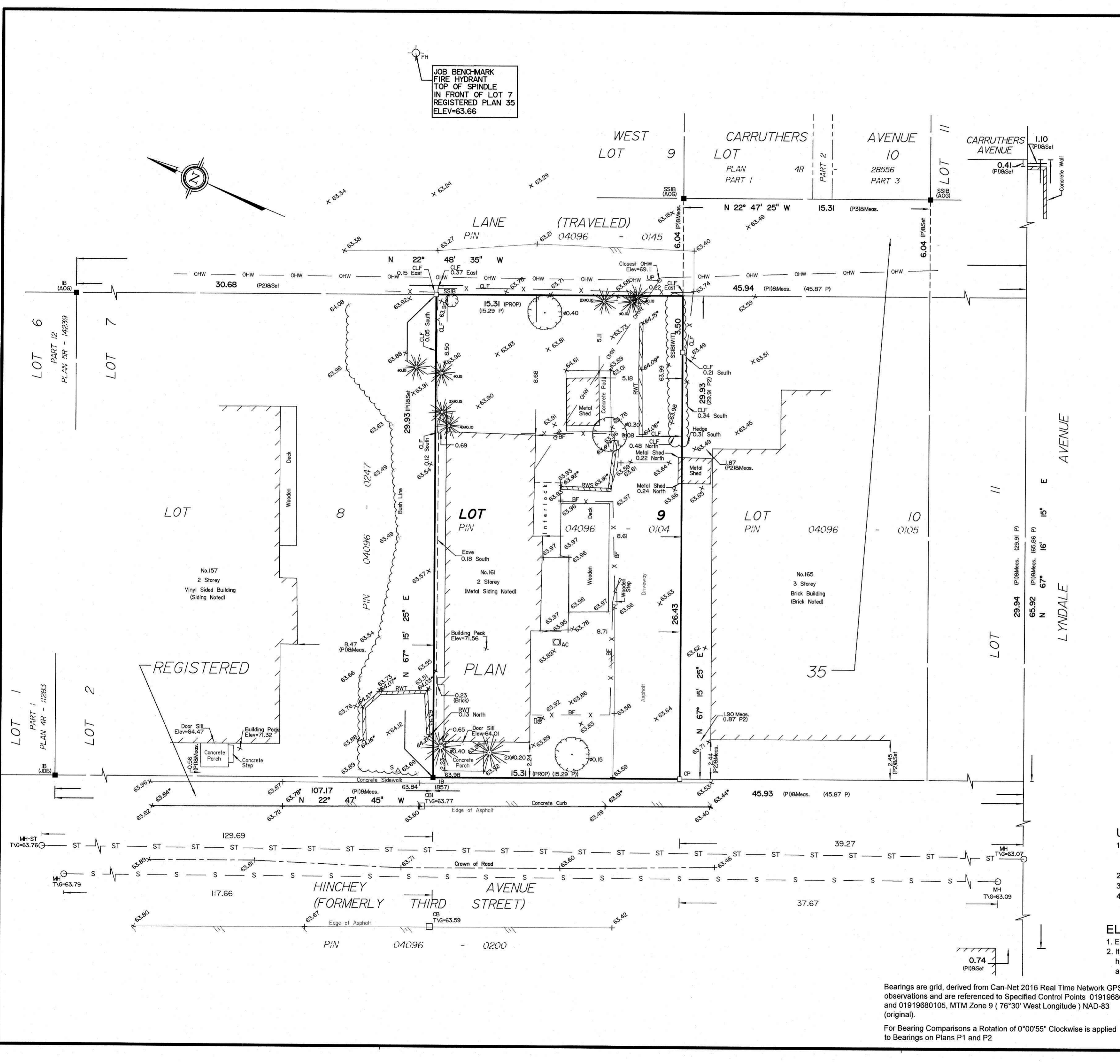
**ELEVATION NOTES**

1. Elevations shown are geodetic and are referred to the CGVD28 geodetic datum.
2. It is the responsibility of the user of this information to verify that the job benchmark has not been altered or disturbed and that its relative elevation and description agrees with the information shown on this drawing.

Bearings are grid, derived from Can-Net 2016 Real Time Network GPS observations and are referenced to Specified Control Points 01919680005 and 01919680105, MTM Zone 9 ( 76°30' West Longitude ) NAD-83 (original).

For Bearing Comparisons a Rotation of 0°00'55" Clockwise is applied to Bearings on Plans P1 and P2

© Annis, O'Sullivan, Vollebakk Ltd. 2020. "THIS PLAN IS PROTECTED BY COPYRIGHT"  
**ANNIS, O'SULLIVAN, VOLLEBAKK LTD.**  
 14 Concourse Gate, Suite 500  
 Nepean, Ont. K2E 7S6  
 Phone: (613) 727-0850 / Fax: (613) 727-1079  
 Email: Nepean@avlltd.com



Y:\2020\2020-18\PRJ\2020-18-CANADA INC L19 P458 T.F.ENG. 20140203 12:00:37 PM IP Page 16 of 24