

This drawing, as an instrument of service, is provided by and is the property of Graziani + Corazza Architects Inc. The contractor must verify and accept responsibility for all dimensions and conditions on site and must notify Graziani + Corazza Architects Inc. of any variations from the supplied information. Graziani + Corazza Architects Inc. is not responsible for the accuracy of survey, structural, mechanical, electrical, etc., engineering information shown on this drawing. Refer to the appropriate engineering drawings before proceeding with the work. Construction must conform to all applicable codes and requirements of the authorities having jurisdiction. Unless otherwise noted, no investigation has been undertaken or reported on by this office in regards to the environmental condition of this site.

This drawing is not to be scaled for construction purpose and may be scaled for review purposes only. All architectural symbols indicated on this drawing are graphic representations only.

Conditions for electronic information transfer
Electronic information is supplied to the other associated firms to assist them in the execution of their work/review. The recipient firms must determine the completeness/appropriateness/relevance of the information in respect to their particular responsibility.

Graziani + Corazza Architects Inc. shall not be responsible for:
1. Errors, omissions, incompleteness due to loss of information in whole or part when information is transferred
2. Transmission of any virus or damage to the receiving electronic system when information is transferred

01. NOV.06.2020 ISSUED FOR SPA SUBMISSION E.C.
02. MAR.15.2021 ISSUED FOR SPA RESUBMISSION E.C.
03. MAY.14.2021 ISSUED FOR SPA RESUBMISSION E.C.

MATERIALS LEGEND	
	GL-V VISION GLASS GLASS: GREY FRAME: BLACK
	GL-R GLASS RAILING GLASS: GREY (TEMPERED) FRAME: BLACK
	GL-S SPANDREL GLASS GLASS: GREY FRAME: BLACK
	PC-L LIGHT COLOURED EXTERIOR FACE COLOUR: LIGHT
	BR-D BRICK - DARK COLOUR: DARK
	MP-LI METAL PANEL - LIGHT COLOUR: DARK
	MP-B METAL PANEL - BLACK COLOUR: BLACK

NOTE: IF EXACT SPECIFIED COLOUR IS NOT AVAILABLE, ATTEMPT COLOUR MATCH AND SUBMIT ALTERNATIVE SAMPLES FOR ARCHITECT'S APPROVAL

GRAZIANI + CORAZZA ARCHITECTS INC.
ENZO M. CORAZZA
LICENCE 4702

1320 Shawan Drive, Suite 100, Mississauga, Ontario L4W 1C3
Phone: 905.795.2601 Fax: 905.795.2844 www.gc-architects.com

PROPOSED MIXED USE DEVELOPMENT

176 Nepean & 293-307 Lisgar

RICH CRAFT
Group of Companies

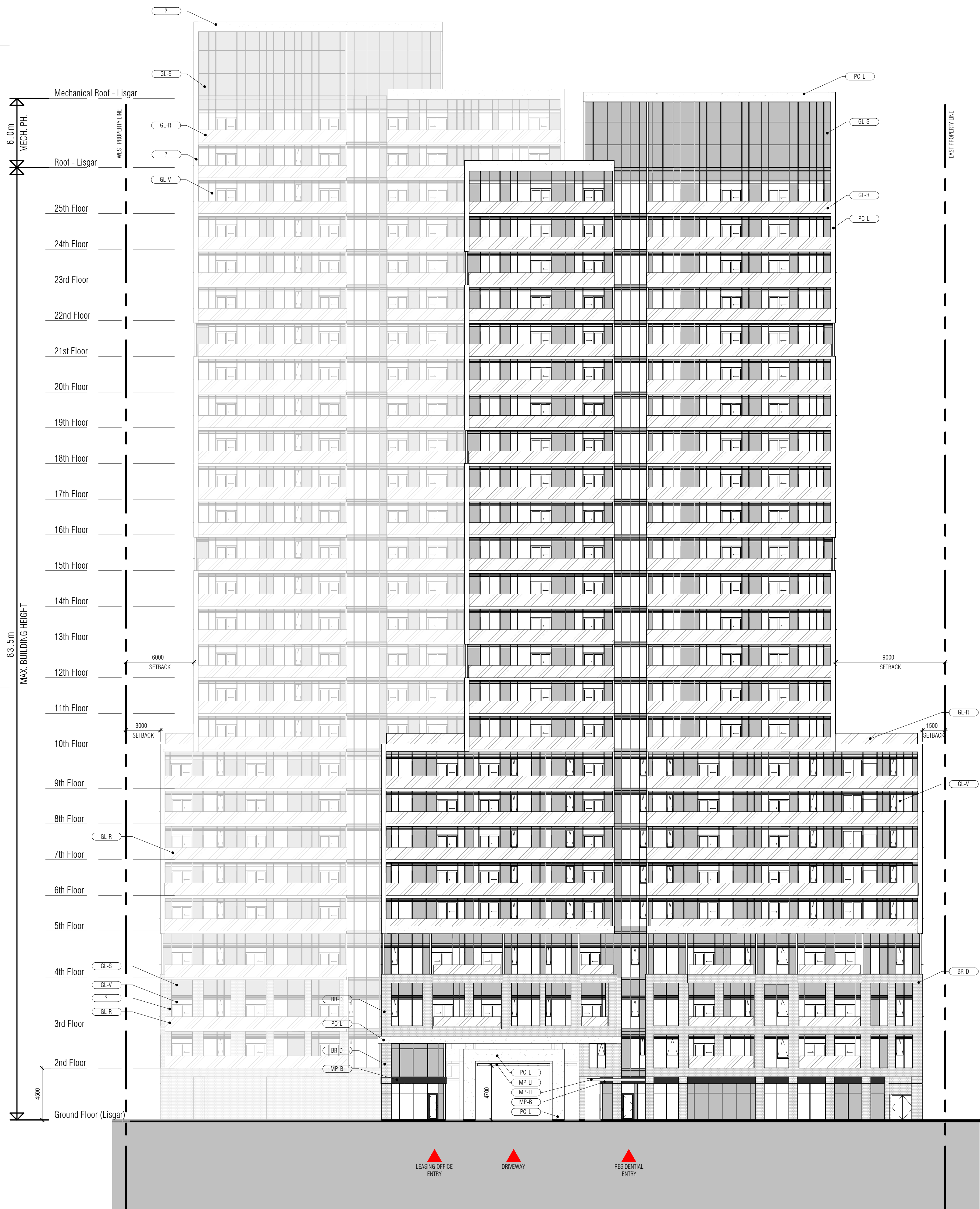
OTTAWA ONTARIO

Project Architect: E. CORAZZA
Assistant Designer: L. WONG
Drawn By: W. CHIU/J. OH
Checked By: D. BIASE
Plot Date: MAY.14.2021
Job #: 1353.16

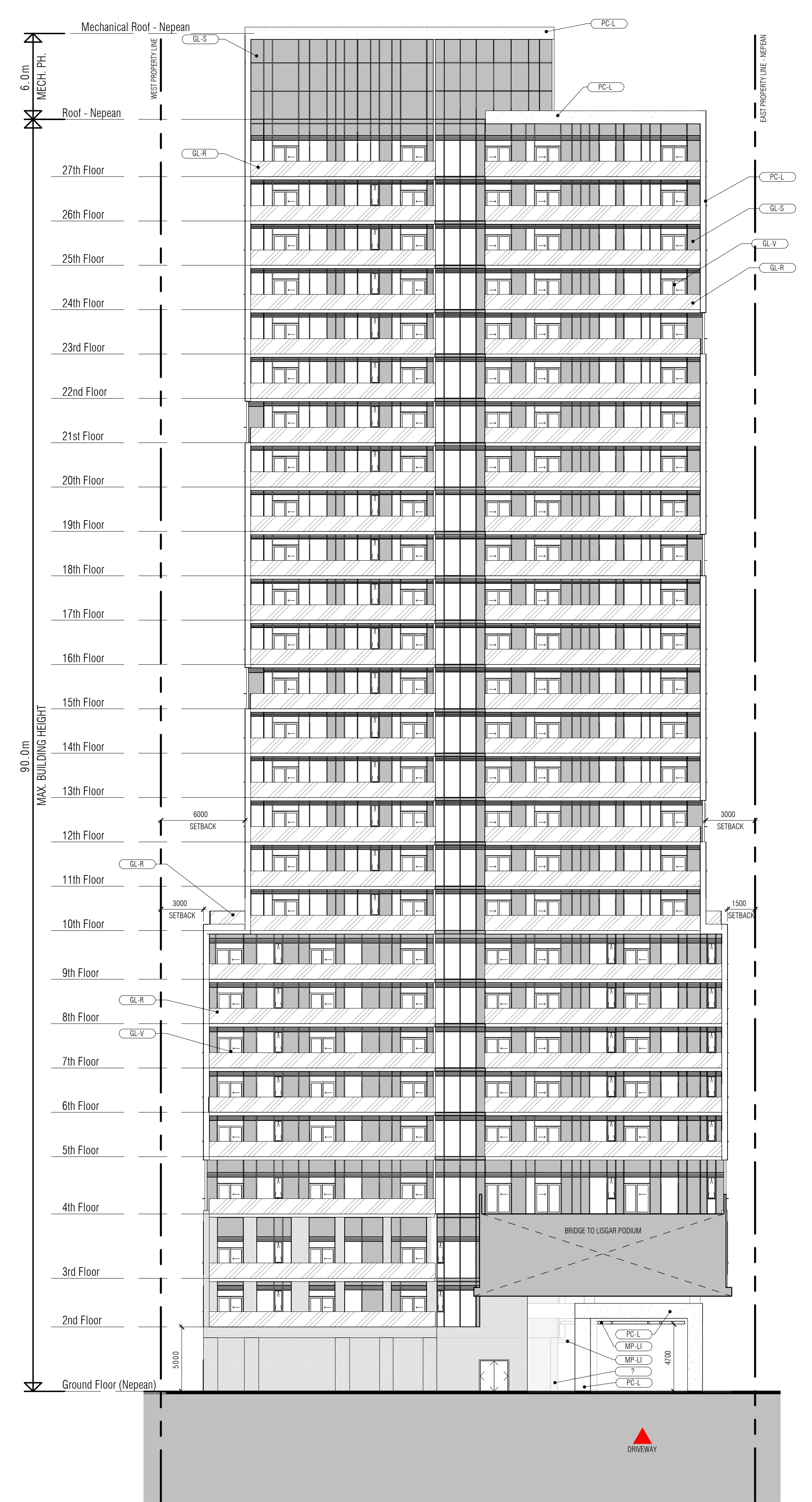
ELEVATIONS NORTH

As indicated A401

TITLEBLOCK SIZE: 610 x 950



1 South
A402 1:200



2 South - Nepean Tower
A402 1:200

This drawing, as an instrument of service, is provided by and is the property of Graziani + Corazza Architects Inc. The contractor must verify and accept responsibility for all dimensions and conditions on site and must notify Graziani + Corazza Architects Inc. of any variations from the supplied information. Graziani + Corazza Architects Inc. is not responsible for the accuracy of survey, structural, mechanical, electrical, etc., engineering information shown on this drawing. Refer to the appropriate engineering drawings before proceeding with the work. Construction must conform to all applicable codes and requirements of the authorities having jurisdiction. Unless otherwise noted, no investigation has been undertaken or reported on by this office in regards to the environmental condition of this site.

This drawing is not to be scaled for construction purpose and may be scaled for review purposes only. All architectural symbols indicated on this drawing are graphic representations only.

Conditions for electronic information transfer
Electronic information is supplied to the other associated firms to assist them in the execution of their work/review. The recipient firms must determine the completeness/appropriateness/relevance of the information in respect to their particular responsibility.

Graziani + Corazza Architects Inc. shall not be responsible for:
1. Errors, omissions, incompleteness due to loss of information in whole or part when information is transferred
2. Transmission of any virus or damage to the receiving electronic system when information is transferred

- 01. NOV.06.2020 ISSUED FOR SPA SUBMISSION E.C.
- 02. MAR.15.2021 ISSUED FOR SPA RESUBMISSION E.C.
- 03. MAY.14.2021 ISSUED FOR SPA RESUBMISSION E.C.

MATERIALS LEGEND	
	GL-V VISION GLASS GLASS: GREY FRAME: BLACK
	GL-R GLASS RAILING GLASS: GREY (TEMPERED) FRAME: BLACK
	GL-S SPANDREL GLASS GLASS: GREY FRAME: BLACK
	PC-L LIGHT COLOURED EXTERIOR FACE COLOUR: LIGHT
	BR-D BRICK - DARK COLOUR: DARK
	MP-L METAL PANEL - LIGHT COLOUR: DARK
	MP-B METAL PANEL - BLACK COLOUR: BLACK

NOTE: IF EXACT SPECIFIED COLOUR IS NOT AVAILABLE, ATTEMPT COLOUR MATCH AND SUBMIT ALTERNATIVE SAMPLES FOR ARCHITECT'S APPROVAL

1320 Shawson Drive, Suite 100, Mississauga, Ontario L4W 1C3
Phone: 905.795.2601 Fax: 905.795.2844 www.gc-architects.com

PROPOSED MIXED USE DEVELOPMENT
176 Nepean & 293-307 Lisgar

RICH CRAFT
Group of Companies

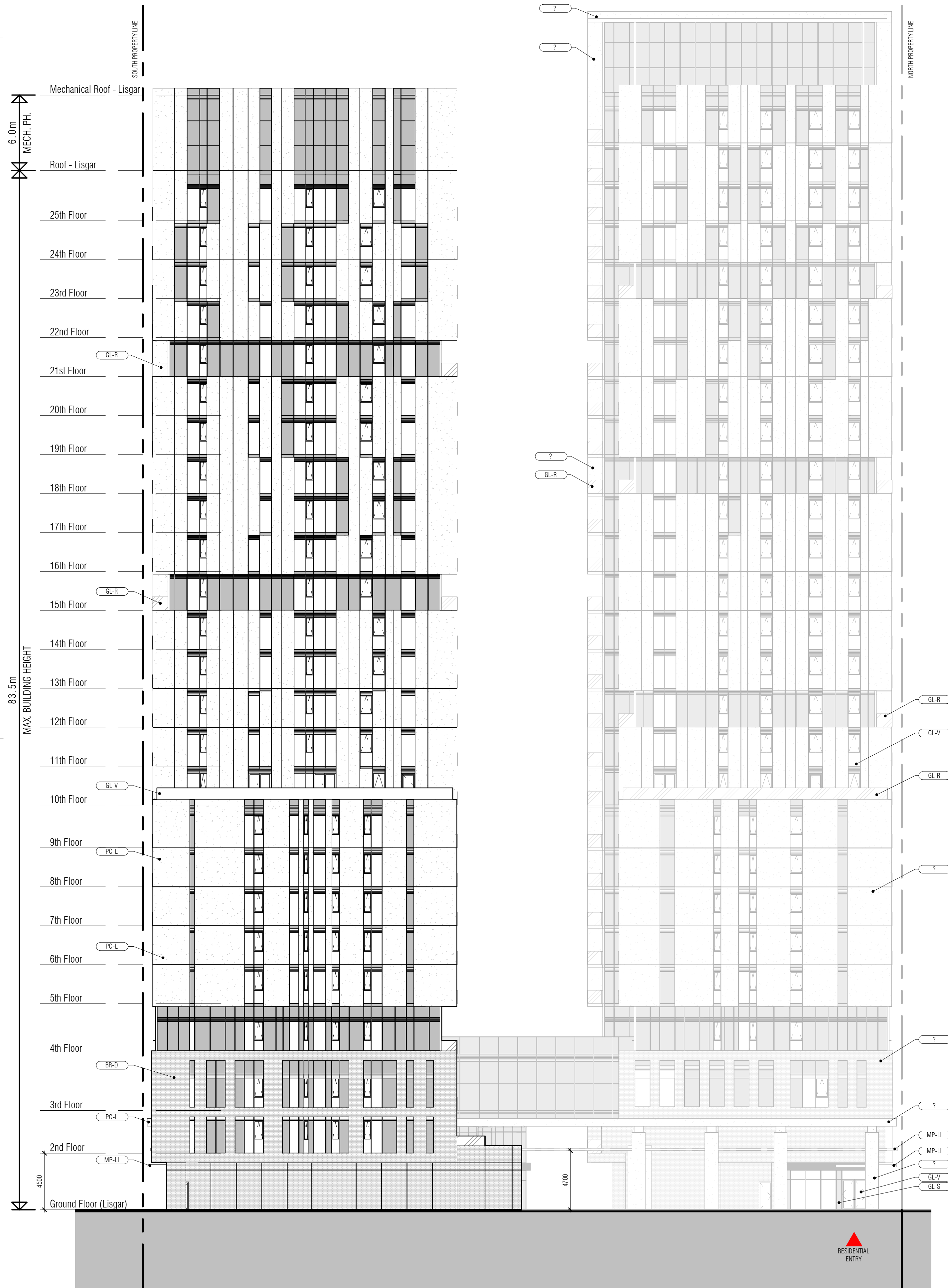
OTTAWA ONTARIO

Project Architect: E. CORAZZA
Assistant Designer: L. WONG
Drawn By: W. CHIU/J. OH
Checked By: D. BIAZZE
Plot Date: MAY.14.2021
Job #: 1353.16

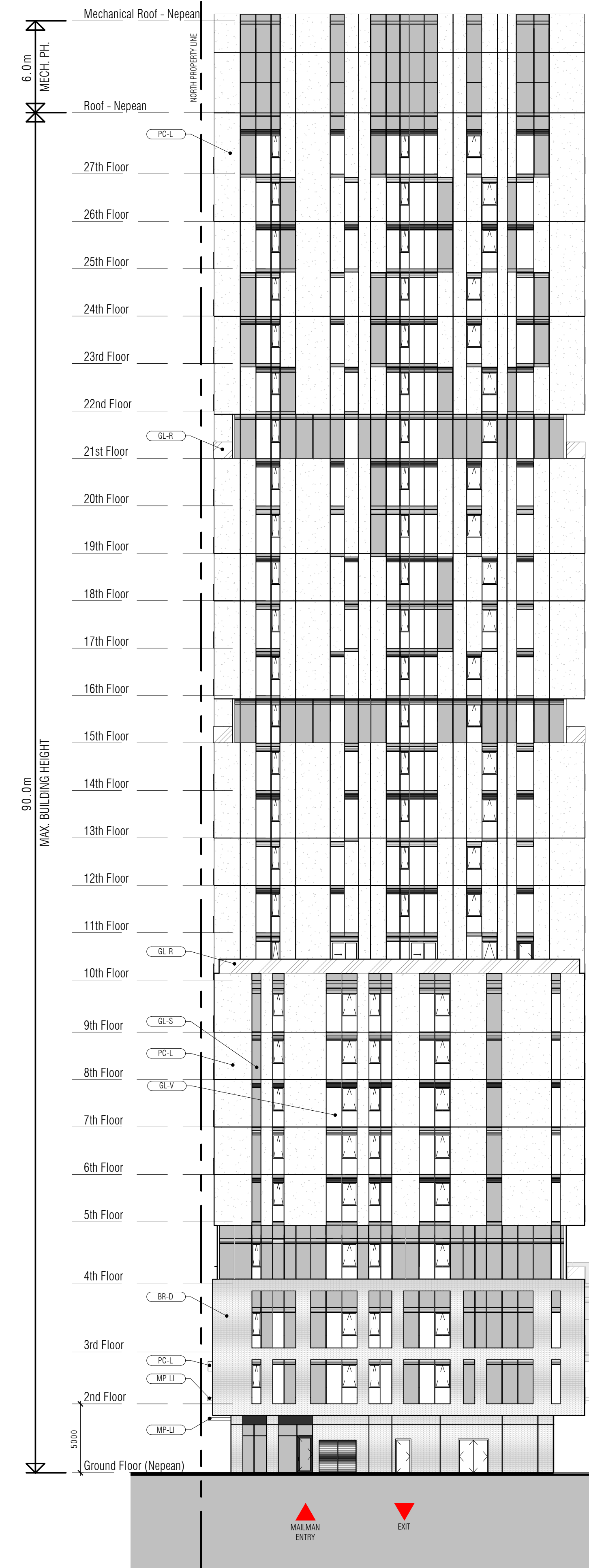
Elevations
South

As indicated

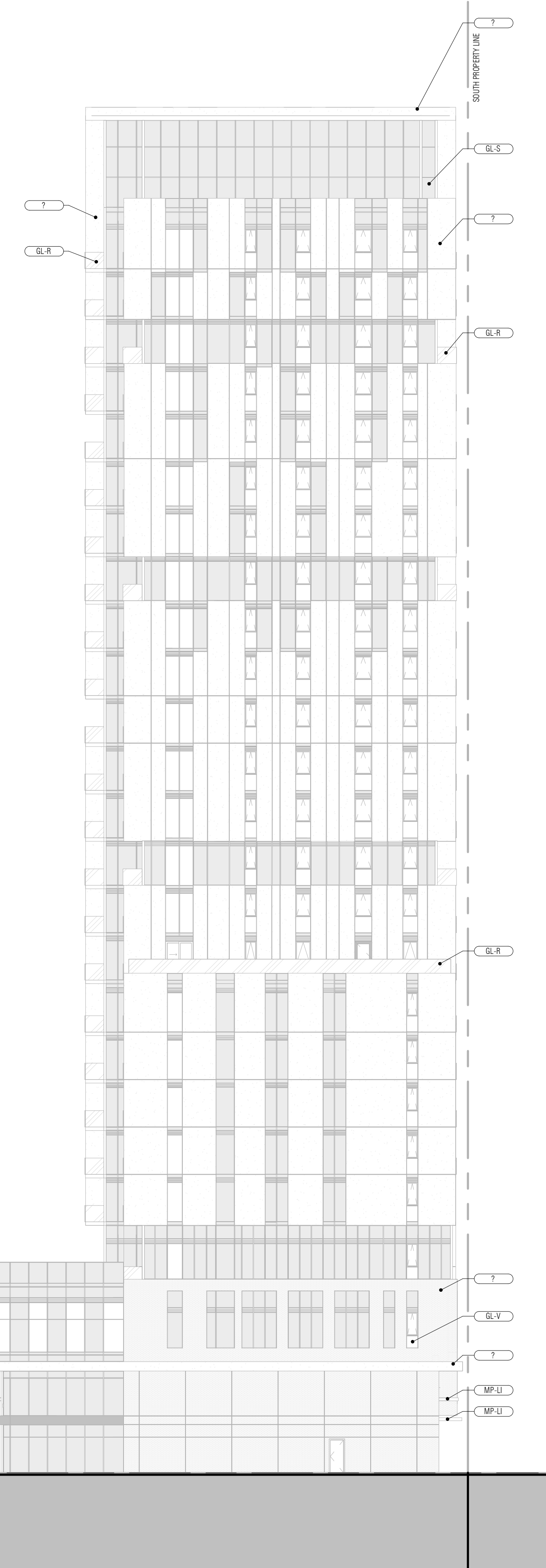
A402



1 East
A403 1:200



2 West
A403 1:200



This drawing, as an instrument of service, is provided by and is the property of Graziani + Corazza Architects Inc. The contractor must verify and accept responsibility for all dimensions and conditions on site and must notify Graziani + Corazza Architects Inc. of any variations from the supplied information. Graziani + Corazza Architects Inc. is not responsible for the accuracy of survey, structural, mechanical, electrical, etc., engineering information shown on this drawing. Refer to the appropriate engineering drawings before proceeding with the work. Construction must conform to all applicable codes and requirements of the authorities having jurisdiction. Unless otherwise noted, no investigation has been undertaken or reported on by this office in regards to the environmental condition of this site.

This drawing is not to be scaled for construction purpose and may be scaled for review purposes only. All architectural symbols indicated on this drawing are graphic representations only.

Conditions for electronic information transfer
Electronic information is supplied to the other associated firms to assist them in the execution of their work/review. The recipient firms must determine the completeness/appropriateness/relevance of the information in respect to their particular responsibility.

Graziani + Corazza Architects Inc. shall not be responsible for:
1. Errors, omissions, incompleteness due to loss of information in whole or part when information is transferred
2. Transmission of any virus or damage to the receiving electronic system when information is transferred

- 01. NOV.06.2020 ISSUED FOR SPA SUBMISSION E.C.
- 02. MAR.15.2021 ISSUED FOR SPA RESUBMISSION E.C.
- 03. MAY.14.2021 ISSUED FOR SPA RESUBMISSION E.C.

MATERIALS LEGEND	
	GL-V VISION GLASS GLASS: GREY FRAME: BLACK
	GL-R GLASS RAILING GLASS: GREY (TEMPERED) FRAME: BLACK
	GL-S SPANDREL GLASS GLASS: GREY FRAME: BLACK
	PC-L LIGHT COLOURED EXTERIOR FACE COLOUR: LIGHT
	BR-D BRICK - DARK COLOUR: DARK
	MP-LI METAL PANEL - LIGHT COLOUR: DARK
	MP-LB METAL PANEL - BLACK COLOUR: BLACK

NOTE: IF EXACT SPECIFIED COLOUR IS NOT AVAILABLE, ATTEMPT COLOUR MATCH AND SUBMIT ALTERNATIVE SAMPLES FOR ARCHITECT'S APPROVAL

G

ONTARIO ASSOCIATION
OF
ARCHITECTS
Wyo Loay

GRAZIANI + CORAZZA
ARCHITECTS INC.
ENZO M. CORAZZA
LICENCE # 4702

1320 Shawan Drive, Suite 100 Mississauga, Ontario L4W 1C3
Phone: 905.795.2601 Fax: 905.795.2844 www.gc-architects.com

PROPOSED MIXED USE DEVELOPMENT

176 Nepean & 293-307 Lisgar

RICHCRAFT
Group of Companies

OTTAWA ONTARIO

Project Architect: E.CORAZZA
Assistant Designer: L.WONG
Drawn By: W.CHIU/J.OH
Checked By: D.BIASE
Plot Date: MAY.14.2021
Job #: 1353.16

**ELEVATIONS
EAST-WEST**

As indicated **A403**