

**NOTES:**

DO NOT SCALE DRAWINGS;

NOTES ARE APPLICABLE TO ALL DRAWINGS IN THE SET;

Fotenn Consultants Inc. IS NOT RESPONSIBLE FOR ACCURACY OF BASE INFORMATION;

REFER TO CIVIL ENGINEERING DRAWINGS FOR GRADING & SITE SERVICING INFORMATION;

THE CONTRACTOR IS RESPONSIBLE FOR CONFIRMING SITE CONDITIONS AND REPORTING ANY DISCREPANCIES TO THE LANDSCAPE ARCHITECT;

THE CONTRACTOR IS RESPONSIBLE FOR CONFIRMING EXACT LOCATIONS OF ALL UNDERGROUND SERVICES AND OBTAINING CLEARANCE FROM ALL APPLICABLE UTILITIES. PROPOSED WORKS FOUND TO BE IN CONFLICT WITH UNDERGROUND SERVICES MAY BE ADJUSTED AT THE DIRECTION OF THE LANDSCAPE ARCHITECT;

LANDSCAPE ELEMENTS SHOWN ARE SUBJECT TO THE FINAL LOCATION OF UNDERGROUND SERVICES AND UTILITIES;

DO NOT INSTALL TREES ON PROPERTY / LOT LINES OR WITHIN DRAINAGE EASEMENTS;

PERFORM WORK IN ACCORDANCE WITH DETAILS AND SPECIFICATIONS;

ALL PLANT MATERIAL SHALL BE No. 1 NURSERY STOCK AND SHALL MEET OR EXCEED THE SPECIFICATION OF THE CANADIAN STANDARDS FOR NURSERY STOCK, AS PUBLISHED BY THE CANADIAN NURSERY LANDSCAPE ASSOCIATION;

SPECIES SUBSTITUTIONS ARE NOT PERMITTED WITHOUT PRIOR WRITTEN APPROVAL OF THE LANDSCAPE ARCHITECT;

ALL UN-PAVED SURFACES TO RECEIVE 150mm DEPTH TOPSOIL & SOD.

**STANDARDS FOR TREE PLANTING:**

NO PLANTING ON CORNERS OR ANYWHERE WHERE IT WOULD CREATE A SIGHT LINE CONCERN;

MAINTAIN A MINIMUM DISTANCE OF 7.5m FROM ALL BUILDINGS;

MAINTAIN A MINIMUM DISTANCE OF 2.5m FROM THE CURB FOR DECIDUOUS TREES AND 4.5m FOR CONIFEROUS TREES;

MAINTAIN A MINIMUM DISTANCE OF 1.5m FOR DECIDUOUS (4.5m FOR CONIFERS) FROM ANY SIDEWALK OR PRIVATE WALKWAY;

MAINTAIN A MINIMUM DISTANCE OF 1.2m FROM ALL DRIVEWAYS;

MAINTAIN A MINIMUM DISTANCE OF 2.5m FROM COMMUNITY MAILBOXES, LIGHT STANDARDS, FIRE HYDRANTS AND NO PLANTING IN FRONT OF HYDRANTS;

MAINTAIN A MINIMUM DISTANCE OF 3.0m FROM ALL HYDRO TRANSFORMERS;

MAINTAIN A MINIMUM DISTANCE OF 1.0m FROM ALL UNDERGROUND SERVICES;

MAINTAIN A MINIMUM DISTANCE OF 1.0m FROM ALL BELL AND CABLE BOXES;

MAINTAIN A MINIMUM DISTANCE OF 10.0 FROM BUS SHELTERS

**IMPORTANT NOTICE FOR CONTRACTOR:**

THE CITY OF OTTAWA REQUIRES A Certificate of Completion (F1) Landscape Works TO BE SUBMITTED AND SEALED BY THE LANDSCAPE ARCHITECT. CONTRACTORS ARE RESPONSIBLE FOR FAMILIARIZING THEMSELVES WITH THE REQUIREMENTS OF THIS PROCESS AND PROVIDING SUFFICIENT NOTICE TO THE LANDSCAPE ARCHITECT TO CONDUCT SITE REVIEWS DURING INSTALLATION OF TREES. THE 1 YEAR WARRANTY PERIOD SHALL NOT COMMENCE UNTIL THE LANDSCAPE ARCHITECT HAS SUBMITTED THE F1 Certificate.

PRIOR TO INSTALLATION OF TREES, THE DEVELOPER WILL CONTACT THE PLANNING AND GROWTH MANAGEMENT AND FORESTRY SERVICES TO REVIEW THE SPECIES AND LOCATION OF TREES.

key plan / plan repère

**PRELIMINARY**  
NOT FOR CONSTRUCTION

- legend / légende
- PROPERTY LINE
  - DECIDUOUS TREES (SEE PLANTING NOTES & SCHEDULE FOR SPECIES AND QUANTITIES)
  - SHRUB, PERENNIAL AND GRASS PLANTING (SEE PLANTING NOTES & SCHEDULE FOR SPECIES AND QUANTITIES)
  - PLANT KEY
  - UNIT PAVERS
  - RIVER ROCK
  - ROUND CONCRETE BOLLARDS (DIAMETERS VARY: 18", 24", 36")
  - PRIVACY SCREEN
  - BIKE RACKS

rev'n	description / la description	yyyy/mm/dd
06	revised per City comments	2021/05/14
05	Issue for SPA Resubmission	2021/03/11
04	Issue for SPA	2020/10/28
03	Issue for SPA Coordination	2020/10/22
02	Issue for SPA Coordination	2020/10/15
01	Issue for Client Review	2020/10/14
00	Issue for Coordination	2020/09/28

**FOTENN Planning + Design**  
396 Cooper Street, Suite 300  
Ottawa, ON, CANADA K2P 2H7  
613.730.5709  
fotenn.com

north / le nord stamp / le cachet

project / projet

**176 NEPEAN & 293-307 LISGAR**

drawing / dessin

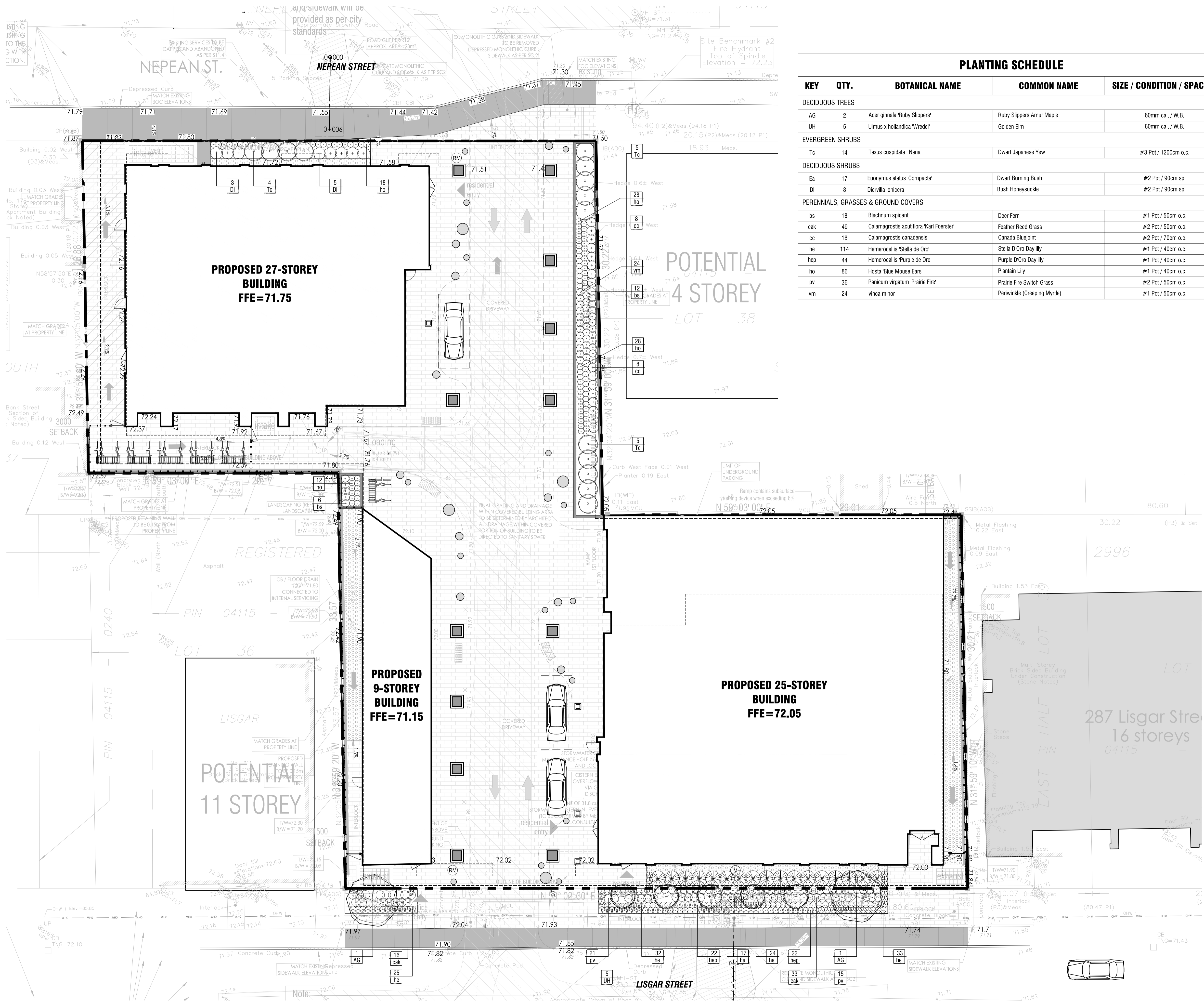
**LANDSCAPE PLAN**

designed / conçu	drawn / dessiné	reviewed / examiné
PM / DF	PM	DF
date	project number / No. du projet	
Jan 2020	X###-###	

drawing number / No. du dessin

**L1 of 4**

PLOT INFORMATION: DWG NAME: P:\PROJECTS\RICH CRAFT\176 Nepean & Lisgar\LANDSCAPE\176 Nepean & Lisgar\176 Nepean & Lisgar.dwg PLOT DATE: 2021-05-14 14:35:46 PM SHEET SIZE: ESD (11.69x16.51) METER PLOTTED BY: Sydney Tremblay LAST SAVED BY: s.tremblay



### PLANTING SCHEDULE

KEY	QTY.	BOTANICAL NAME	COMMON NAME	SIZE / CONDITION / SPACING
<b>DECIDUOUS TREES</b>				
AG	2	Acer ginnala 'Ruby Slippers'	Ruby Slippers Amur Maple	60mm cal. / W.B.
UH	5	Ulmus x hollandica 'Wredei'	Golden Elm	60mm cal. / W.B.
<b>EVERGREEN SHRUBS</b>				
Tc	14	Taxus cuspidata 'Nana'	Dwarf Japanese Yew	#3 Pot / 1200cm o.c.
<b>DECIDUOUS SHRUBS</b>				
Ea	17	Euonymus alatus 'Compacta'	Dwarf Burning Bush	#2 Pot / 90cm sp.
DI	8	Diervilla lonicera	Bush Honeysuckle	#2 Pot / 90cm sp.
<b>PERENNIALS, GRASSES &amp; GROUND COVERS</b>				
bs	18	Blechnum spicant	Deer Fern	#1 Pot / 50cm o.c.
cak	49	Calamagrostis acutiflora 'Karl Foerster'	Feather Reed Grass	#2 Pot / 50cm o.c.
cc	16	Calamagrostis canadensis	Canada Bluejoint	#2 Pot / 70cm o.c.
he	114	Hemerocallis 'Stella de Oro'	Stella D'Oro Daylily	#1 Pot / 40cm o.c.
hep	44	Hemerocallis 'Purple de Oro'	Purple D'Oro Daylily	#1 Pot / 40cm o.c.
ho	86	Hosta 'Blue Mouse Ears'	Plantain Lily	#1 Pot / 40cm o.c.
pv	36	Panicum virgatum 'Prairie Fire'	Prairie Fire Switch Grass	#2 Pot / 50cm o.c.
vm	24	vinca minor	Periwinkle (Creeping Myrtle)	#1 Pot / 50cm o.c.

Copyright Reserved  
 The Copyrights to all designs and drawings are the property of Fotenn Consultants Inc. Unauthorized reproduction or use is forbidden. DO NOT SCALE DRAWING  
 Copyright réservés  
 Les droits d'auteur à tous les modèles et dessins sont la propriété de Fotenn Consultants Inc. Toute reproduction ou utilisation non autorisée est interdite. NE PAS L'ÉCHELLE DE DESSIN



key plan / plan repère  
**PRELIMINARY**  
 NOT FOR CONSTRUCTION

- legend / légende
- PROPERTY LINE
  - DECIDUOUS TREES (SEE PLANTING NOTES & SCHEDULE FOR SPECIES AND QUANTITIES)
  - SHRUB, PERENNIAL AND GRASS PLANTING (SEE PLANTING NOTES & SCHEDULE FOR SPECIES AND QUANTITIES)
  - PLANT KEY
  - UNIT PAVERS
  - RIVER ROCK
  - ROUND CONCRETE BOLLARDS (DIAMETERS VARY: 18", 24", 36")
  - PRIVACY SCREEN
  - BIKE RACKS

rev'n	description / la description	yyyy/mm/dd
06	revised per City comments	2021/05/14
05	issue for SPA Resubmission	2021/03/11
04	issue for SPA	2020/10/28
03	issue for SPA Coordination	2020/10/22
02	issue for SPA Coordination	2020/10/15
01	issue for Client Review	2020/10/14
00	issue for Coordination	2020/09/28

**FOTENN Planning + Design**  
 396 Cooper Street, Suite 300  
 Ottawa, ON, CANADA K2P 2H7  
 613.730.5709  
 fotenn.com

north / le nord stamp / le cachet

project / projet  
**176 NEPEAN & 293-307 LISGAR**

drawing / dessin  
**PLANTING PLAN**

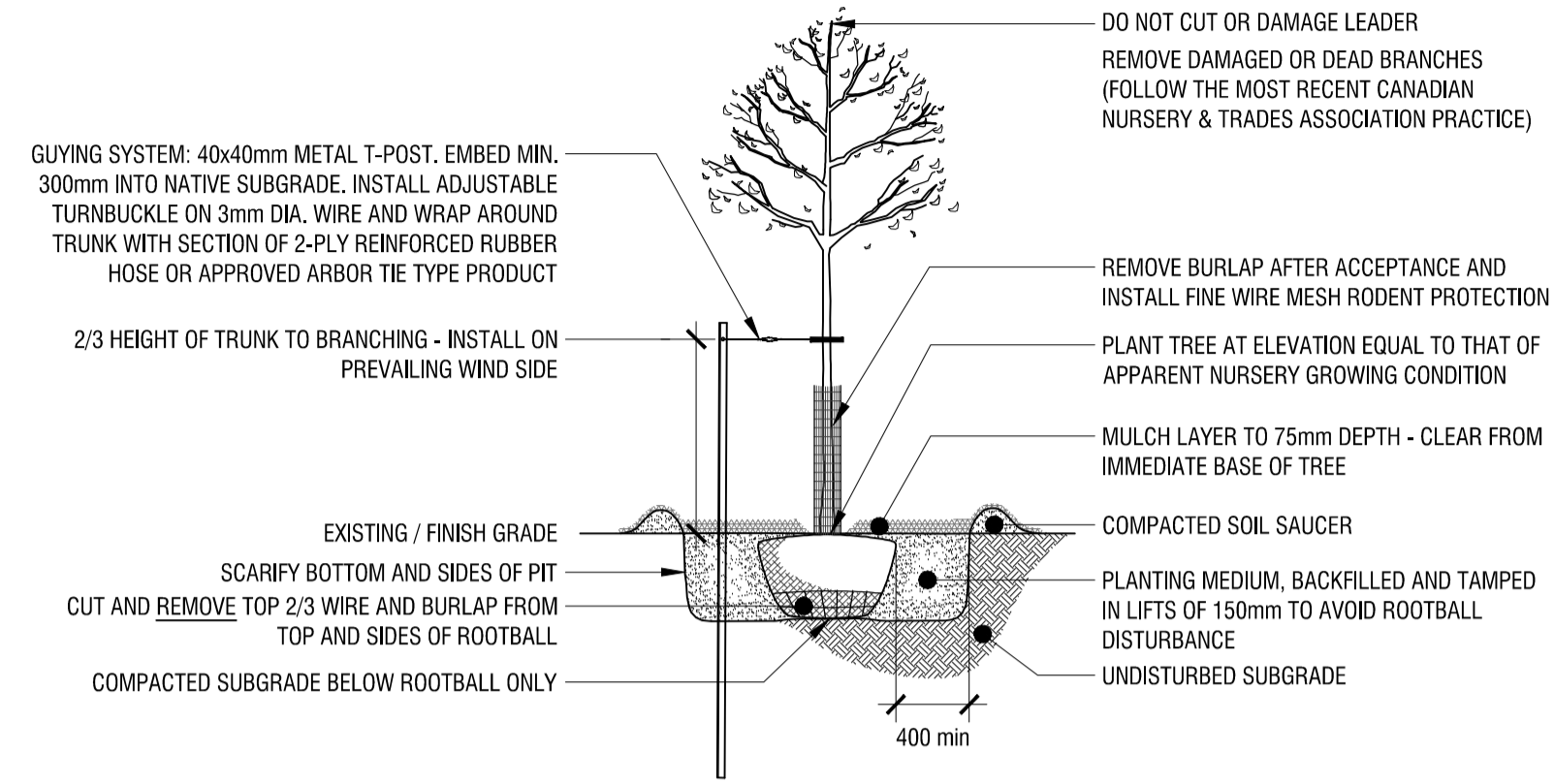
designed / conçu	drawn / dessiné	reviewed / examiné
<b>PM / DF</b>	<b>PM</b>	<b>DF</b>
date	project number / No. du projet	
<b>Jan 2020</b>	<b>X##-##</b>	

drawing number / No. du dessin  
**L2 of 4**

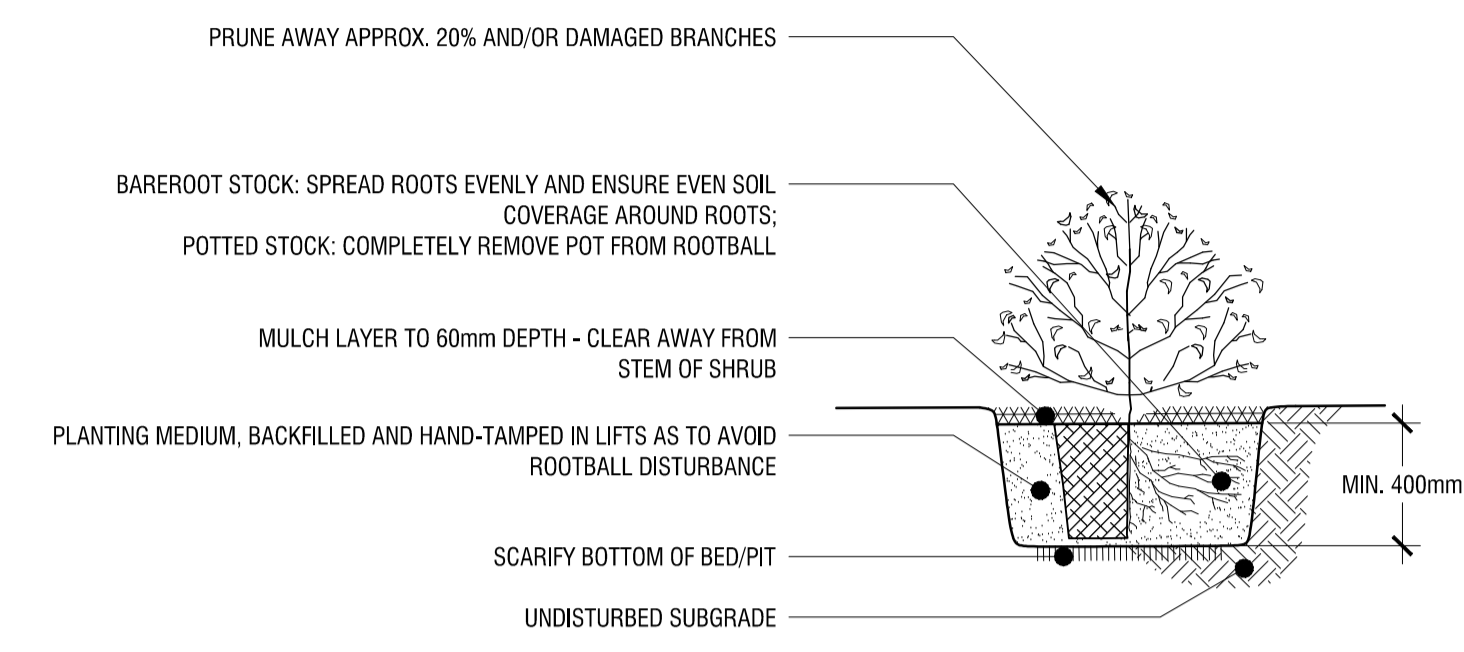
**1 PLANTING PLAN**  
**L2 1:150**

PLOT INFORMATION: DWG NAME: P:\PROJECTS\RICH CRAFT\176 & 293-307 LISGAR\176 & 293-307 LISGAR.dwg PLOT DATE: 2021-05-14 3:24:24 PM SHEET SIZE: E3 (11.0" x 17.0") PLOTTED BY: Sydney Tremblay LAST SAVED BY: s.tremblay

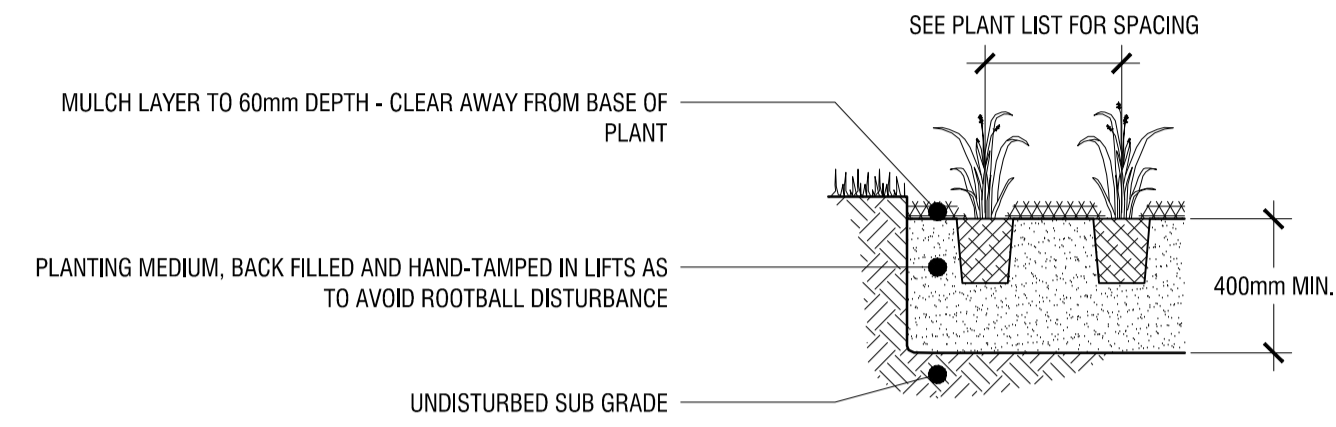
**PRELIMINARY**  
 NOT FOR CONSTRUCTION



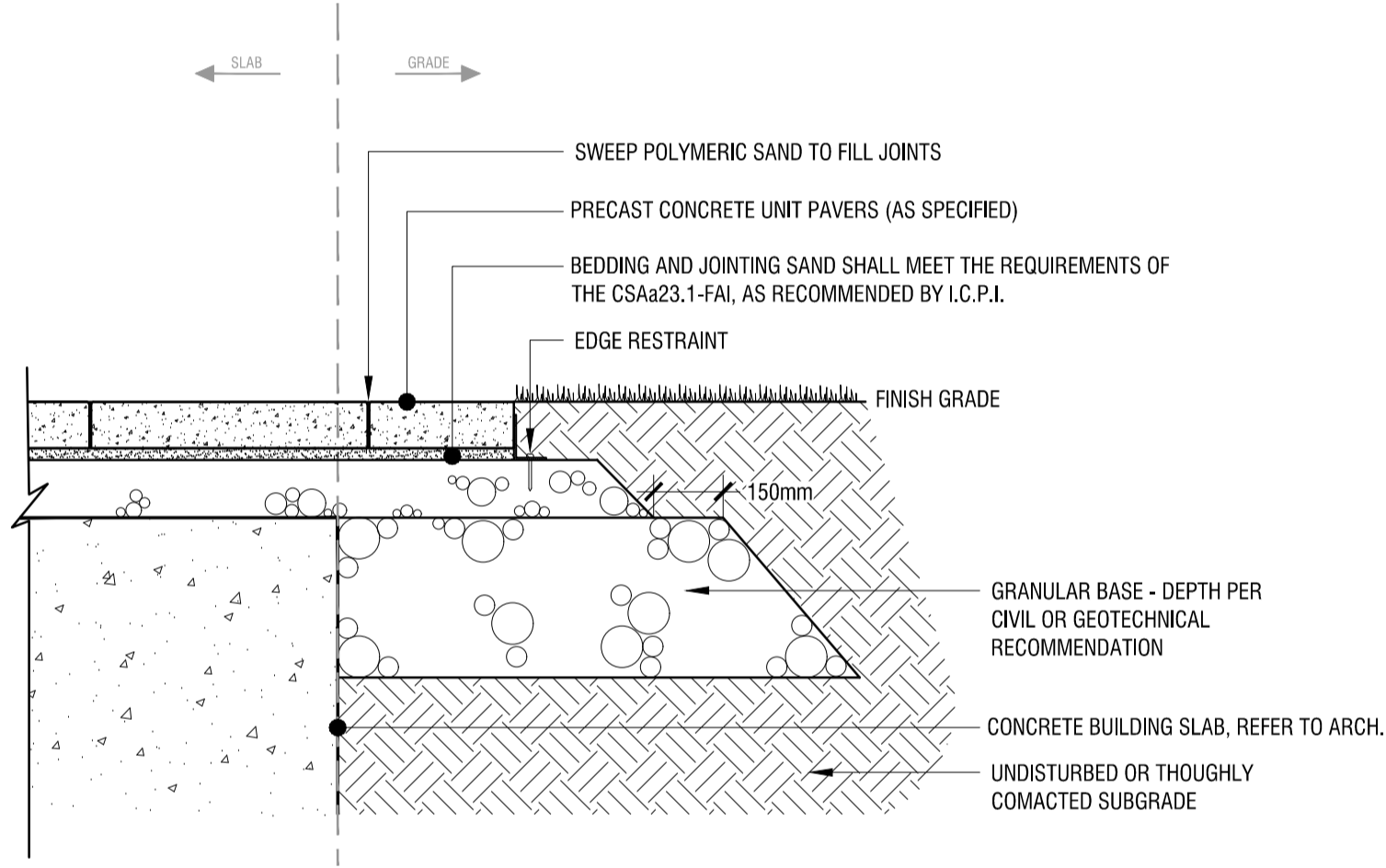
**1**  
**L3** **DECIDUOUS TREE PLANTING DETAIL**  
 n.t.s.



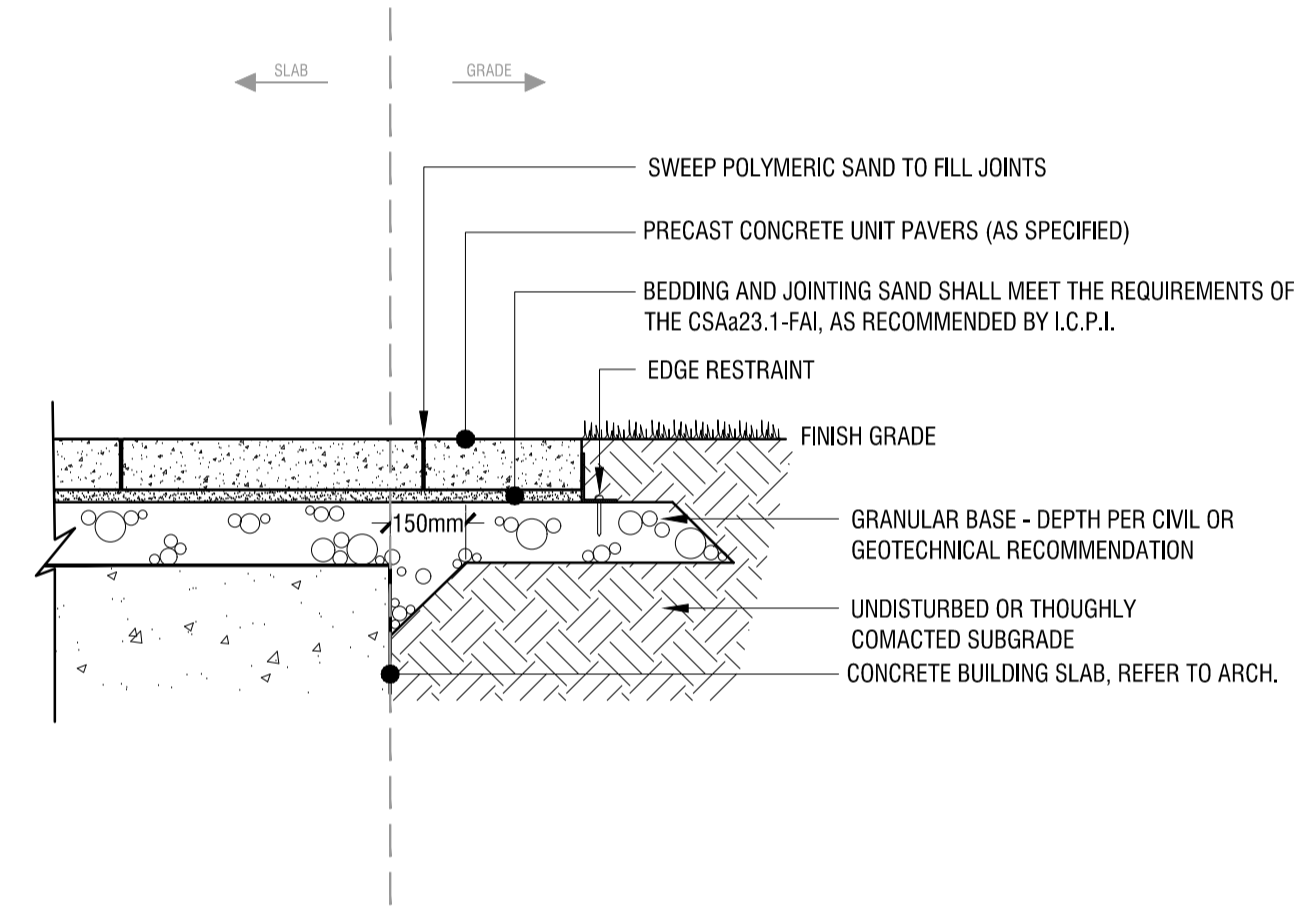
**2**  
**L3** **SHRUB PLANTING DETAIL**  
 n.t.s.



**3**  
**L3** **PERENNIAL PLANTING DETAIL**  
 n.t.s.



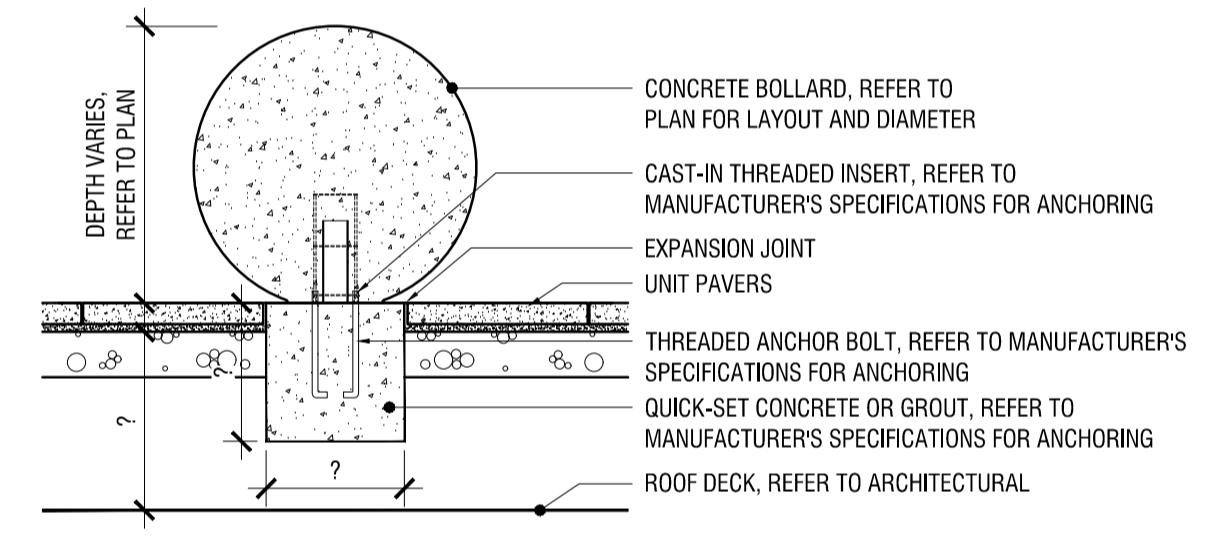
**4**  
**L3** **HEAVY-DUTY CONCRETE UNIT PAVERS**  
 n.t.s.



**5**  
**L3** **LIGHT-DUTY CONCRETE UNIT PAVERS**  
 n.t.s.



PRODUCT / MANUFACTURER: SPHERICAL BOLLARD / WAUSAU TILE  
 SIZES (REFER TO PLAN): 12", 18", 24"  
 COLOUR / FINISH: TBD



**6**  
**L3** **SPHERICAL CONCRETE BOLLARDS**  
 n.t.s.

rev'n	description / la description	yyyy/mm/dd
06	revised per City comments	2021/05/14
05	issue for SPA Resubmission	2021/03/11
04	issue for SPA	2020/10/28
03	issue for SPA Coordination	2020/10/22
02	issue for SPA Coordination	2020/10/15
01	issue for Client Review	2020/10/14
00	issue for Coordination	2020/09/28

**FOTENN Planning + Design**  
 396 Cooper Street, Suite 300  
 Ottawa, ON, CANADA K2P 2H7  
 613.730.5709  
 fotenn.com

north / le nord stamp / le cachet

project / projet  
**176 NEPEAN & 293-307 LISGAR**

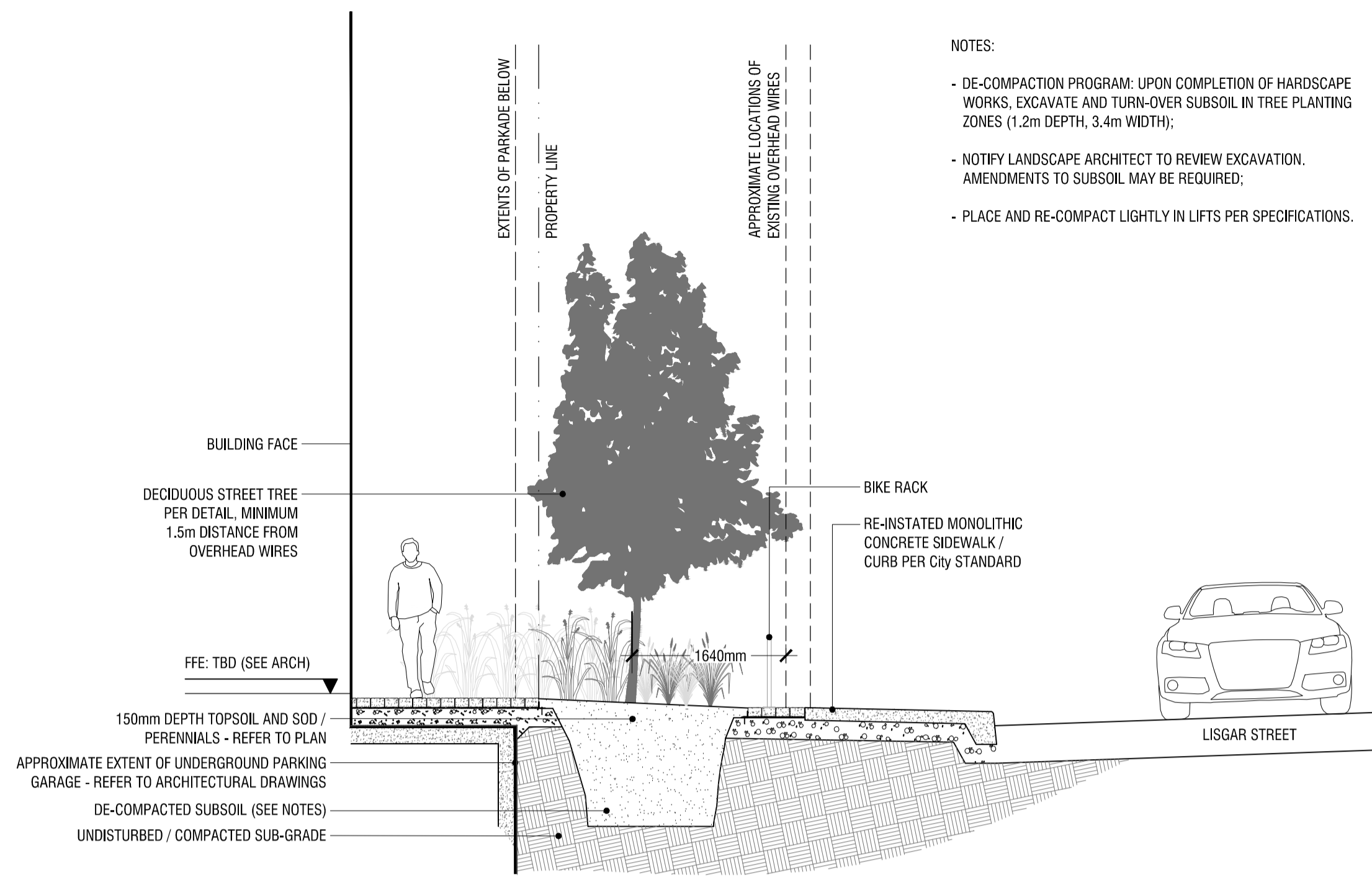
drawing / dessin

**CONSTRUCTION DETAILS**

designed / conçu	drawn / dessiné	reviewed / examiné
<b>PM / DF</b>	<b>PM</b>	<b>DF</b>
date	project number / No. du projet	
<b>Jan 2020</b>	<b>X ##-##</b>	

drawing number / No. du dessin  
**L3 of 4**

**PRELIMINARY**  
 NOT FOR CONSTRUCTION



**1 SECTION THROUGH LISGAR FRONTAGE**  
**L4 n.t.s.**

FILE INFORMATION: DWG NAME: P:\PROJECTS\RICH CRAFT\176 & NEPEAN\307\DRAWINGS\01\176-307-01-01.dwg PLOT DATE: 2021-05-14 3:25:59 PM SHEET SIZE: E3(1)1 (Metric) PLOTTED IN: System Titleblock LAST SAVED BY: sstevale

rev'n	description / la description	yyyy/mm/dd
06	revised per City comments	2021/05/14
05	issue for SPA Resubmission	2021/03/11
04	issue for SPA	2020/10/28
03	issue for SPA Coordination	2020/10/22
02	issue for SPA Coordination	2020/10/15
01	issue for Client Review	2020/10/14
00	issue for Coordination	2020/09/28

**FOTENN Planning + Design**  
 396 Cooper Street, Suite 300  
 Ottawa, ON, CANADA K2P 2H7  
 613.730.5709  
 fotenn.com

north / le nord stamp / le cachet

project / projet

**176 NEPEAN & 293-307 LISGAR**

drawing / dessin

**SECTIONS**

designed / conçu	drawn / dessiné	reviewed / examiné
<b>PM / DF</b>	<b>PM</b>	<b>DF</b>
date	project number / No. du projet	
<b>Jan 2020</b>	<b>X ##-##</b>	

drawing number / No. du dessin

**L4 of 4**