

PRELIMINARY
NOT FOR CONSTRUCTION

legend / légende

	PROPERTY LINE
	DECIDUOUS TREES (SEE PLANTING NOTES & SCHEDULE FOR SPECIES AND QUANTITIES)
	SHRUB, PERENNIAL AND GRASS PLANTING (SEE PLANTING NOTES & SCHEDULE FOR SPECIES AND QUANTITIES)
	PLANT KEY
	UNIT PAVERS
	RIVER ROCK
	ROUND CONCRETE BOLLARDS (DIAMETERS VARY: 18", 24", 36")
	PRIVACY SCREEN
	BIKE RACKS

04	issue for SPA	2020/10/28
03	issue for SPA Coordination	2020/10/22
02	issue for SPA Coordination	2020/10/15
01	issue for Client Review	2020/10/14
00	issue for Coordination	2020/09/28
rev/n	description / la description	yyyy/mm/dd

FOTENN Planning + Design
396 Cooper Street, Suite 300
Ottawa, ON, CANADA K2P 2H7
613.730.5709
fotenn.com

north / le nord stamp / le cachet

project / projet

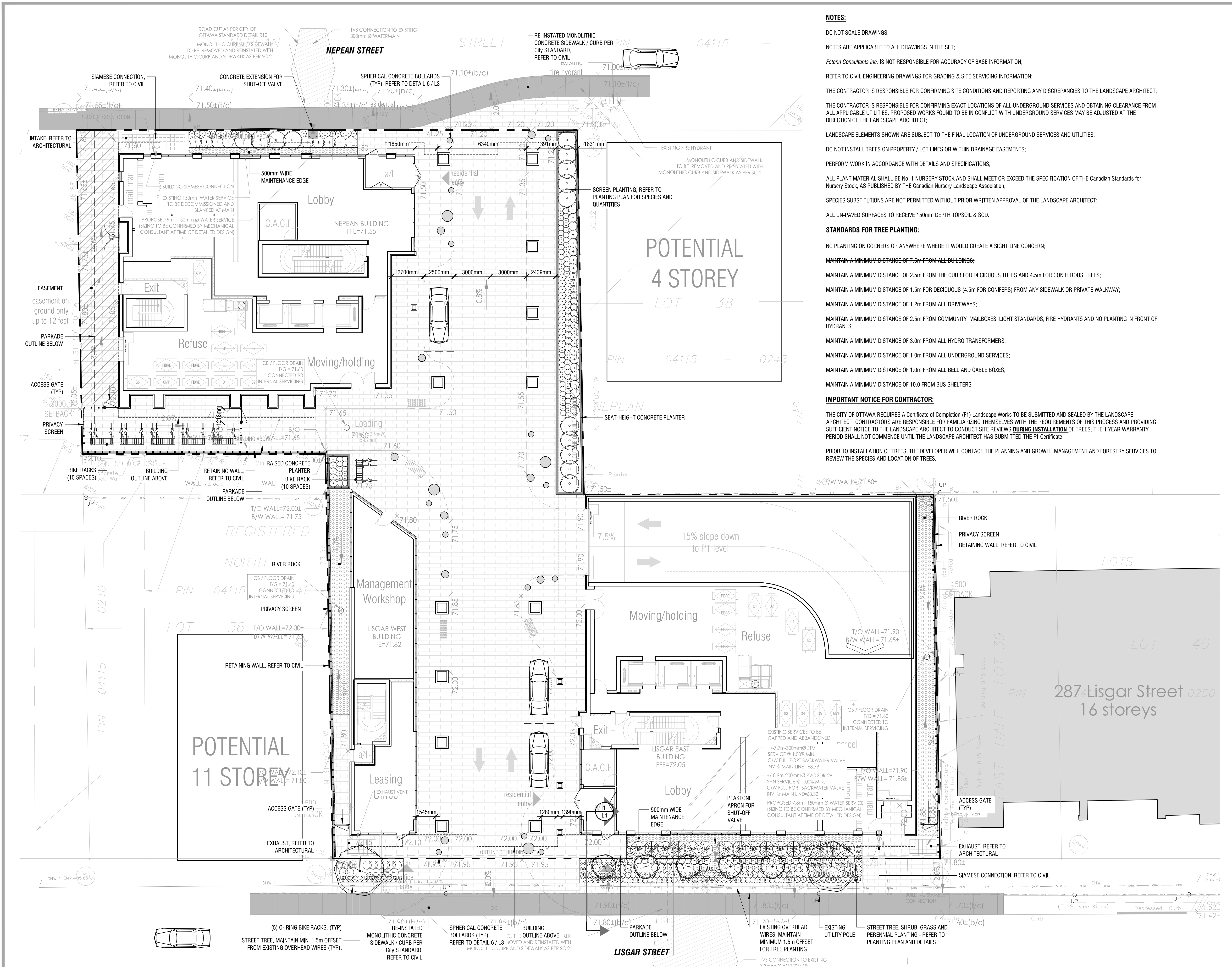
176 NEPEAN & 293-307 LISGAR

drawing / dessin

LANDSCAPE PLAN

designed / conçu PM / DF	drawn / dessiné PM	reviewed / examiné DF
date Jan 2020	project number / No. du projet X ##-##	
drawing number / No. du dessin		

L1 of 4



NOTES:

DO NOT SCALE DRAWINGS:
NOTES ARE APPLICABLE TO ALL DRAWINGS IN THE SET;

Fotenn Consultants Inc. IS NOT RESPONSIBLE FOR ACCURACY OF BASE INFORMATION;
REFER TO CIVIL ENGINEERING DRAWINGS FOR GRADING & SITE SERVICING INFORMATION;

THE CONTRACTOR IS RESPONSIBLE FOR CONFIRMING SITE CONDITIONS AND REPORTING ANY DISCREPANCIES TO THE LANDSCAPE ARCHITECT;

THE CONTRACTOR IS RESPONSIBLE FOR CONFIRMING EXACT LOCATIONS OF ALL UNDERGROUND SERVICES AND OBTAINING CLEARANCE FROM ALL APPLICABLE UTILITIES. PROPOSED WORKS FOUND TO BE IN CONFLICT WITH UNDERGROUND SERVICES MAY BE ADJUSTED AT THE DIRECTION OF THE LANDSCAPE ARCHITECT;

LANDSCAPE ELEMENTS SHOWN ARE SUBJECT TO THE FINAL LOCATION OF UNDERGROUND SERVICES AND UTILITIES;

DO NOT INSTALL TREES ON PROPERTY / LOT LINES OR WITHIN DRAINAGE EASEMENTS;

PERFORM WORK IN ACCORDANCE WITH DETAILS AND SPECIFICATIONS;

ALL PLANT MATERIAL SHALL BE No. 1 NURSERY STOCK AND SHALL MEET OR EXCEED THE SPECIFICATION OF THE Canadian Standards for Nursery Stock, AS PUBLISHED BY THE Canadian Nursery Landscape Association;

SPECIES SUBSTITUTIONS ARE NOT PERMITTED WITHOUT PRIOR WRITTEN APPROVAL OF THE LANDSCAPE ARCHITECT;

ALL UN-PAVED SURFACES TO RECEIVE 150mm DEPTH TOPSOIL & SOD.

STANDARDS FOR TREE PLANTING:

NO PLANTING ON CORNERS OR ANYWHERE WHERE IT WOULD CREATE A SIGHT LINE CONCERN;

MAINTAIN A MINIMUM DISTANCE OF 7.5m FROM ALL BUILDINGS;

MAINTAIN A MINIMUM DISTANCE OF 2.5m FROM THE CURB FOR DECIDUOUS TREES AND 4.5m FOR CONIFEROUS TREES;

MAINTAIN A MINIMUM DISTANCE OF 1.5m FOR DECIDUOUS (4.5m FOR CONIFERS) FROM ANY SIDEWALK OR PRIVATE WALKWAY;

MAINTAIN A MINIMUM DISTANCE OF 1.2m FROM ALL DRIVEWAYS;

MAINTAIN A MINIMUM DISTANCE OF 2.5m FROM COMMUNITY MAILBOXES, LIGHT STANDARDS, FIRE HYDRANTS AND NO PLANTING IN FRONT OF HYDRANTS;

MAINTAIN A MINIMUM DISTANCE OF 3.0m FROM ALL HYDRO TRANSFORMERS;

MAINTAIN A MINIMUM DISTANCE OF 1.0m FROM ALL UNDERGROUND SERVICES;

MAINTAIN A MINIMUM DISTANCE OF 1.0m FROM ALL BELL AND CABLE BOXES;

MAINTAIN A MINIMUM DISTANCE OF 10.0 FROM BUS SHELTERS

IMPORTANT NOTICE FOR CONTRACTOR:

THE CITY OF OTTAWA REQUIRES A Certificate of Completion (F1) Landscape Works TO BE SUBMITTED AND SEALED BY THE LANDSCAPE ARCHITECT. CONTRACTORS ARE RESPONSIBLE FOR FAMILIARIZING THEMSELVES WITH THE REQUIREMENTS OF THIS PROCESS AND PROVIDING SUFFICIENT NOTICE TO THE LANDSCAPE ARCHITECT TO CONDUCT SITE REVIEWS DURING INSTALLATION OF TREES. THE 1 YEAR WARRANTY PERIOD SHALL NOT COMMENCE UNTIL THE LANDSCAPE ARCHITECT HAS SUBMITTED THE F1 Certificate.

PRIOR TO INSTALLATION OF TREES, THE DEVELOPER WILL CONTACT THE PLANNING AND GROWTH MANAGEMENT AND FORESTRY SERVICES TO REVIEW THE SPECIES AND LOCATION OF TREES.

Client / Client



key plan / plan repère

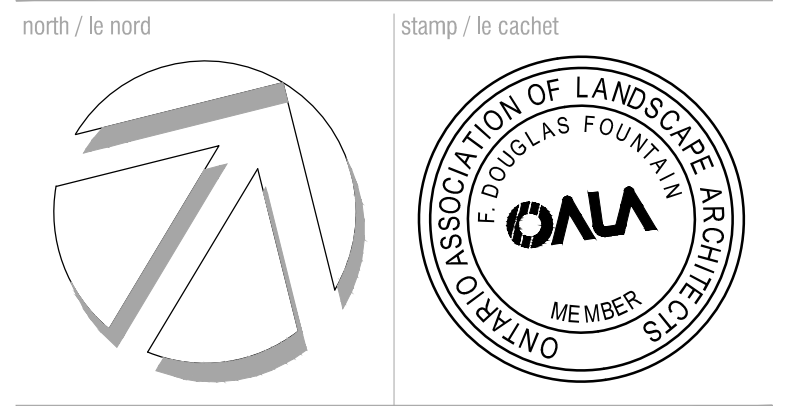
PRELIMINARY
 NOT FOR CONSTRUCTION

Legend / légende

	PROPERTY LINE
	DECIDUOUS TREES (SEE PLANTING NOTES & SCHEDULE FOR SPECIES AND QUANTITIES)
	SHRUB, PERENNIAL AND GRASS PLANTING (SEE PLANTING NOTES & SCHEDULE FOR SPECIES AND QUANTITIES)
	PLANT KEY
	UNIT PAVERS
	RIVER ROCK
	ROUND CONCRETE BOLLARDS (DIAMETERS VARY: 18", 24", 36")
	PRIVACY SCREEN
	BIKE RACKS

04	issue for SPA	2020/10/28
03	issue for SPA Coordination	2020/10/22
02	issue for SPA Coordination	2020/10/15
01	issue for Client Review	2020/10/14
00	issue for Coordination	2020/09/28
rev/n	description / la description	yyyy/mm/dd

FOTENN Planning + Design
 396 Cooper Street, Suite 300
 Ottawa, ON, CANADA K2P 2H7
 613.730.5709
 fotenn.com

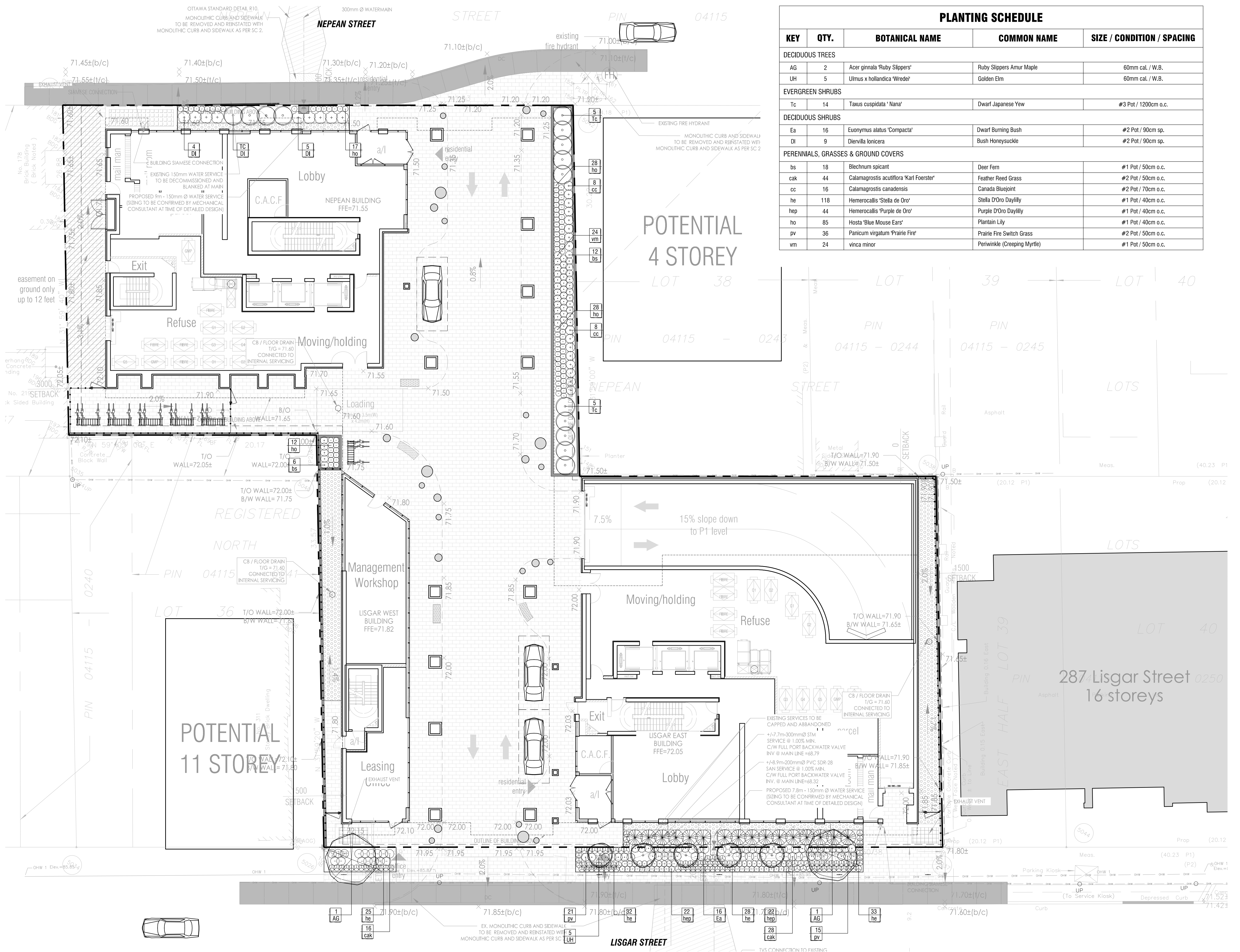


project / projet
176 NEPEAN & 293-307 LISGAR
 drawing / dessin

PLANTING PLAN

designed / conçu PM / DF	drawn / dessiné PM	reviewed / examiné DF
date Jan 2020	project number / No. du projet X ##-##	
drawing number / No. du dessin		

L2 of 4

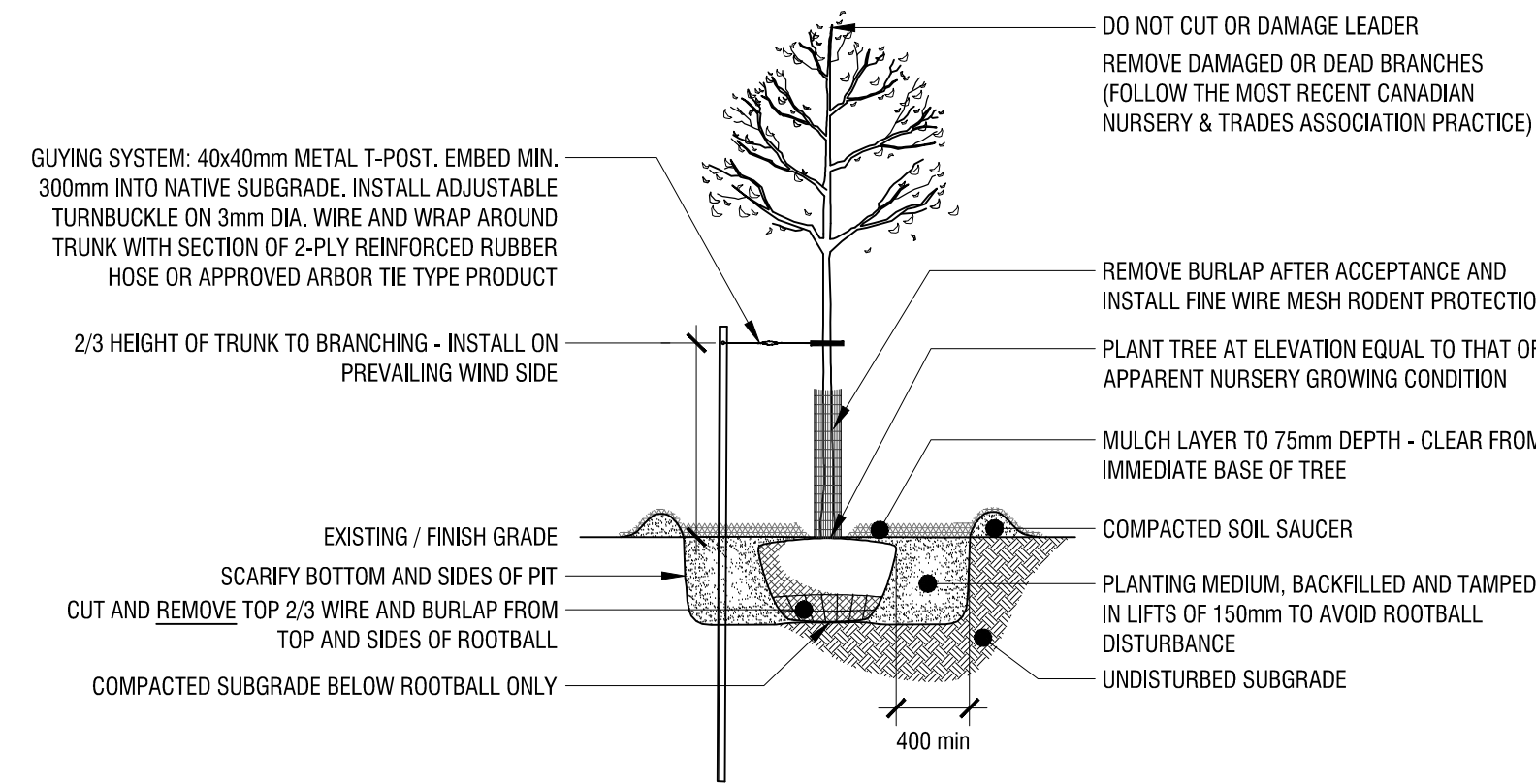


PLANTING SCHEDULE

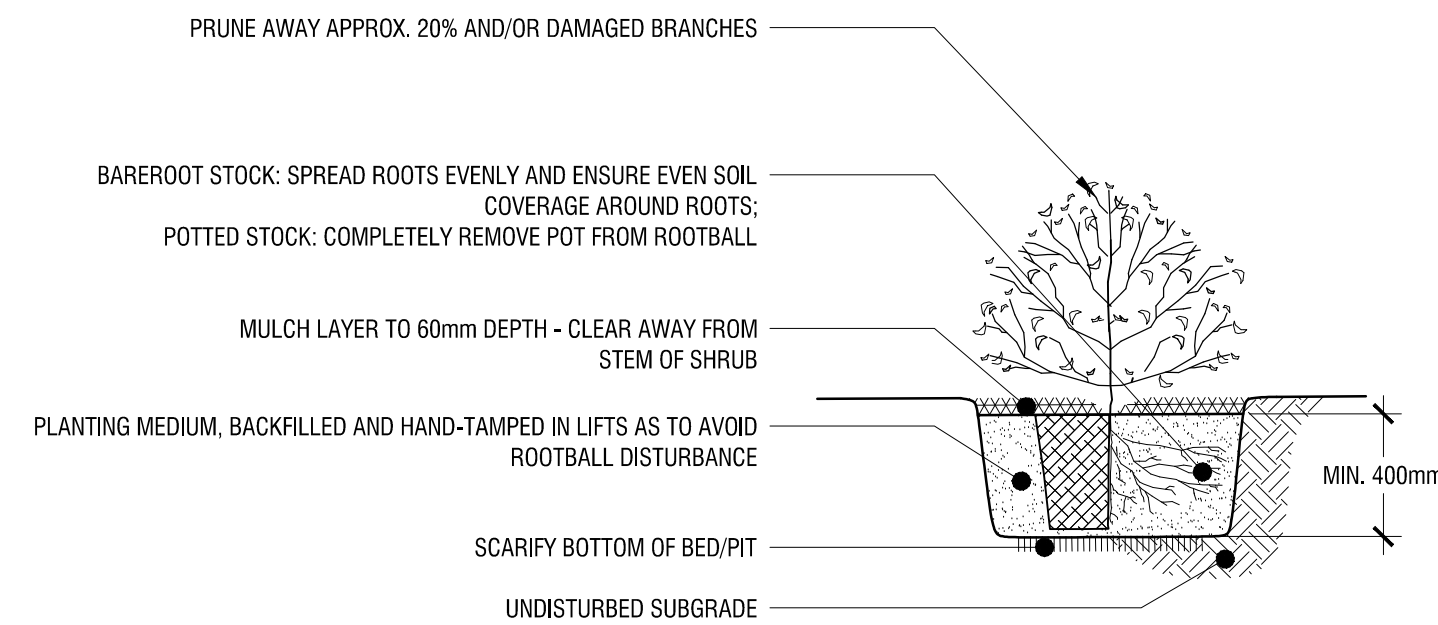
KEY	QTY.	BOTANICAL NAME	COMMON NAME	SIZE / CONDITION / SPACING
DECIDUOUS TREES				
AG	2	Acer ginnala 'Ruby Slippers'	Ruby Slippers Amur Maple	60mm cal. / W.B.
UH	5	Ulmus x hollandica 'Wredei'	Golden Elm	60mm cal. / W.B.
EVERGREEN SHRUBS				
Tc	14	Taxus cuspidata 'Nana'	Dwarf Japanese Yew	#3 Pot / 1200cm o.c.
DECIDUOUS SHRUBS				
Ea	16	Euonymus alatus 'Compacta'	Dwarf Burning Bush	#2 Pot / 90cm sp.
DI	9	Diervilla lonicera	Bush Honeysuckle	#2 Pot / 90cm sp.
PERENNIALS, GRASSES & GROUND COVERS				
bs	18	Blechnum spicant	Deer Fern	#1 Pot / 50cm o.c.
cak	44	Calamagrostis acutiflora 'Karl Foerster'	Feather Reed Grass	#2 Pot / 50cm o.c.
cc	16	Calamagrostis canadensis	Canada Bluejoint	#2 Pot / 70cm o.c.
he	118	Hemerocallis 'Stella de Oro'	Stella D'Oro Daylily	#1 Pot / 40cm o.c.
hep	44	Hemerocallis 'Purple de Oro'	Purple D'Oro Daylily	#1 Pot / 40cm o.c.
ho	85	Hosta 'Blue Mouse Ears'	Plantain Lily	#1 Pot / 40cm o.c.
pv	36	Panicum virgatum 'Prairie Fire'	Prairie Fire Switch Grass	#2 Pot / 50cm o.c.
vm	24	vinca minor	Periwinkle (Creeping Myrtle)	#1 Pot / 50cm o.c.

1 PLANTING PLAN
L2 1:150

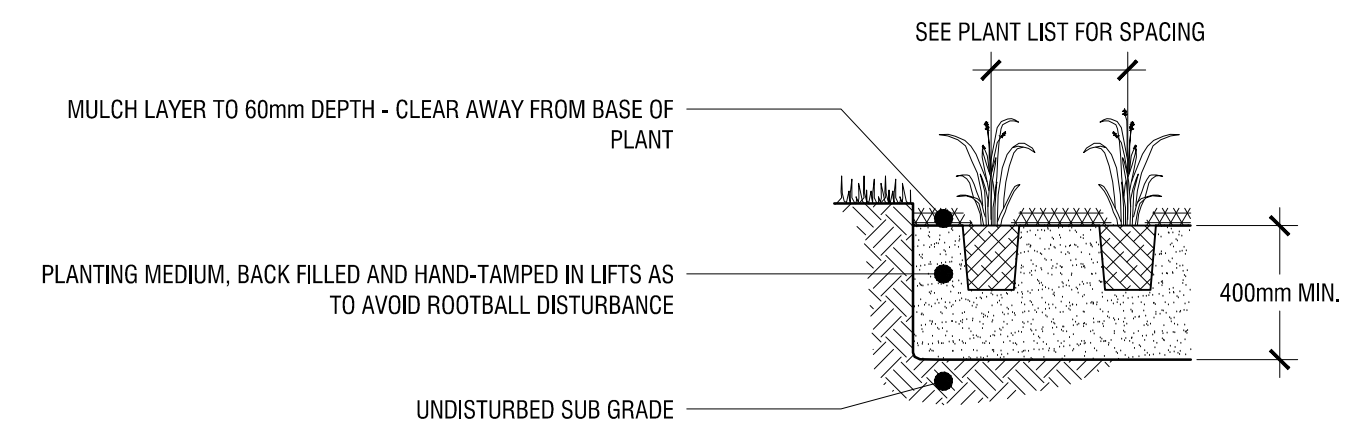
PRELIMINARY
 NOT FOR CONSTRUCTION



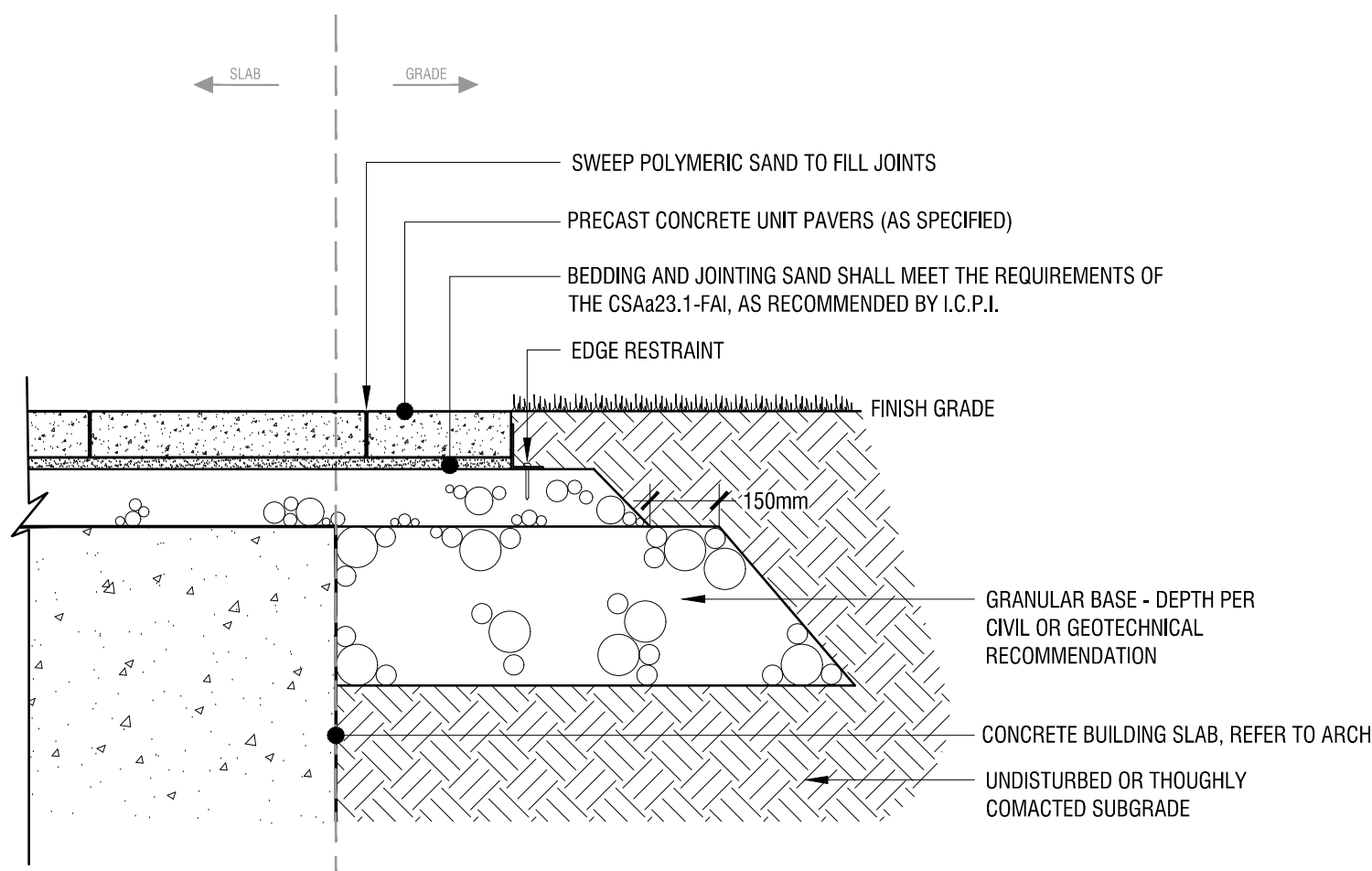
1 **DECIDUOUS TREE PLANTING DETAIL**
L3 **n.t.s.**



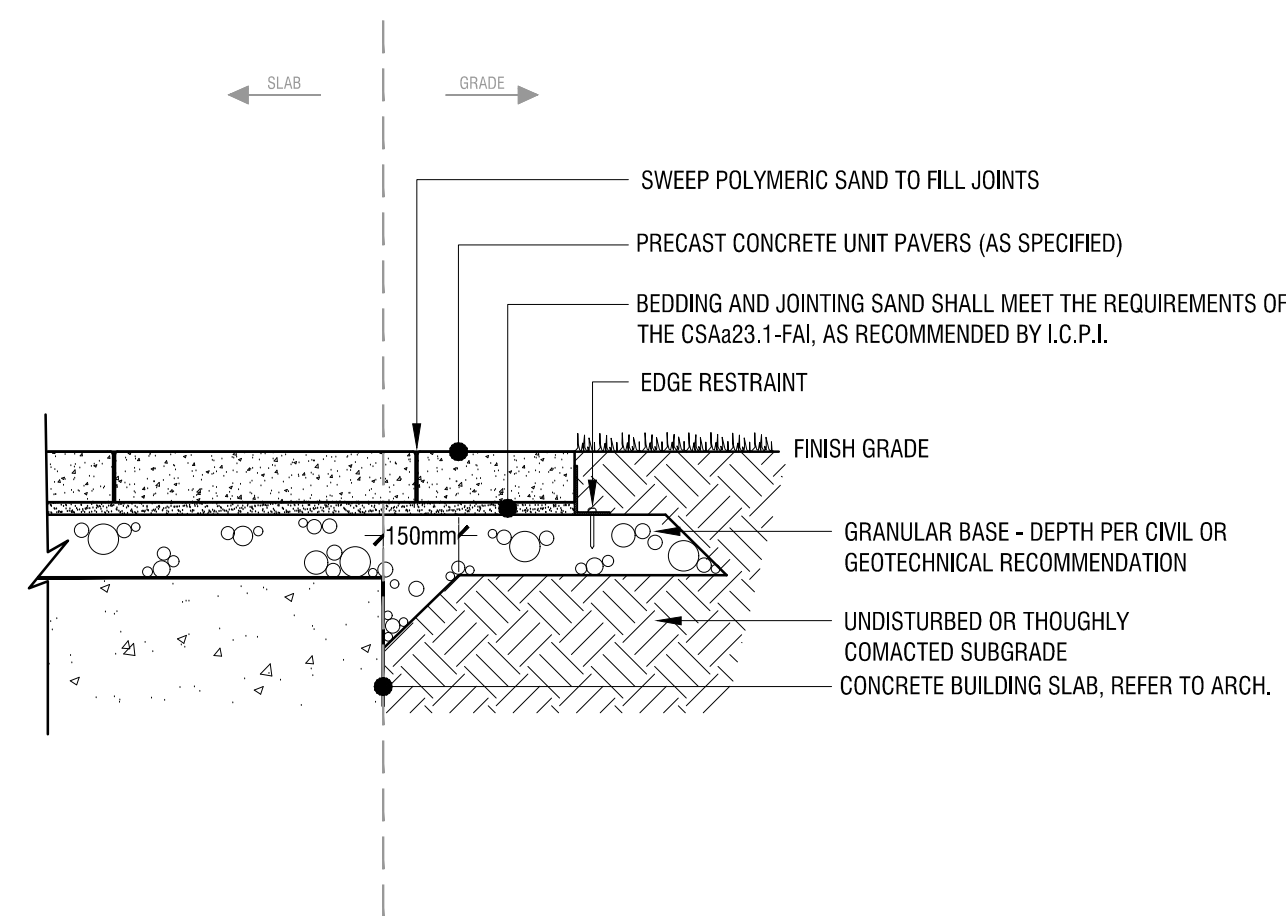
2 **SHRUB PLANTING DETAIL**
L3 **n.t.s.**



3 **PERENNIAL PLANTING DETAIL**
L3 **n.t.s.**



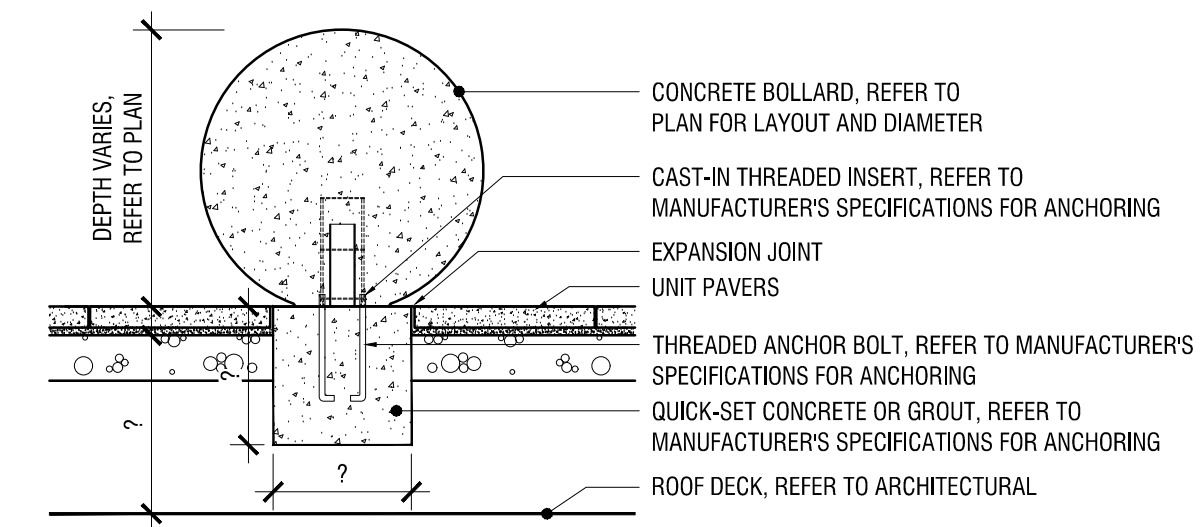
4 **HEAVY-DUTY CONCRETE UNIT PAVERS**
L3 **n.t.s.**



5 **LIGHT-DUTY CONCRETE UNIT PAVERS**
L3 **n.t.s.**



PRODUCT / MANUFACTURER: SPHERICAL BOLLARD / WAUSAU TILE
SIZES (REFER TO PLAN): 12", 18", 24"
COLOUR / FINISH: TBD



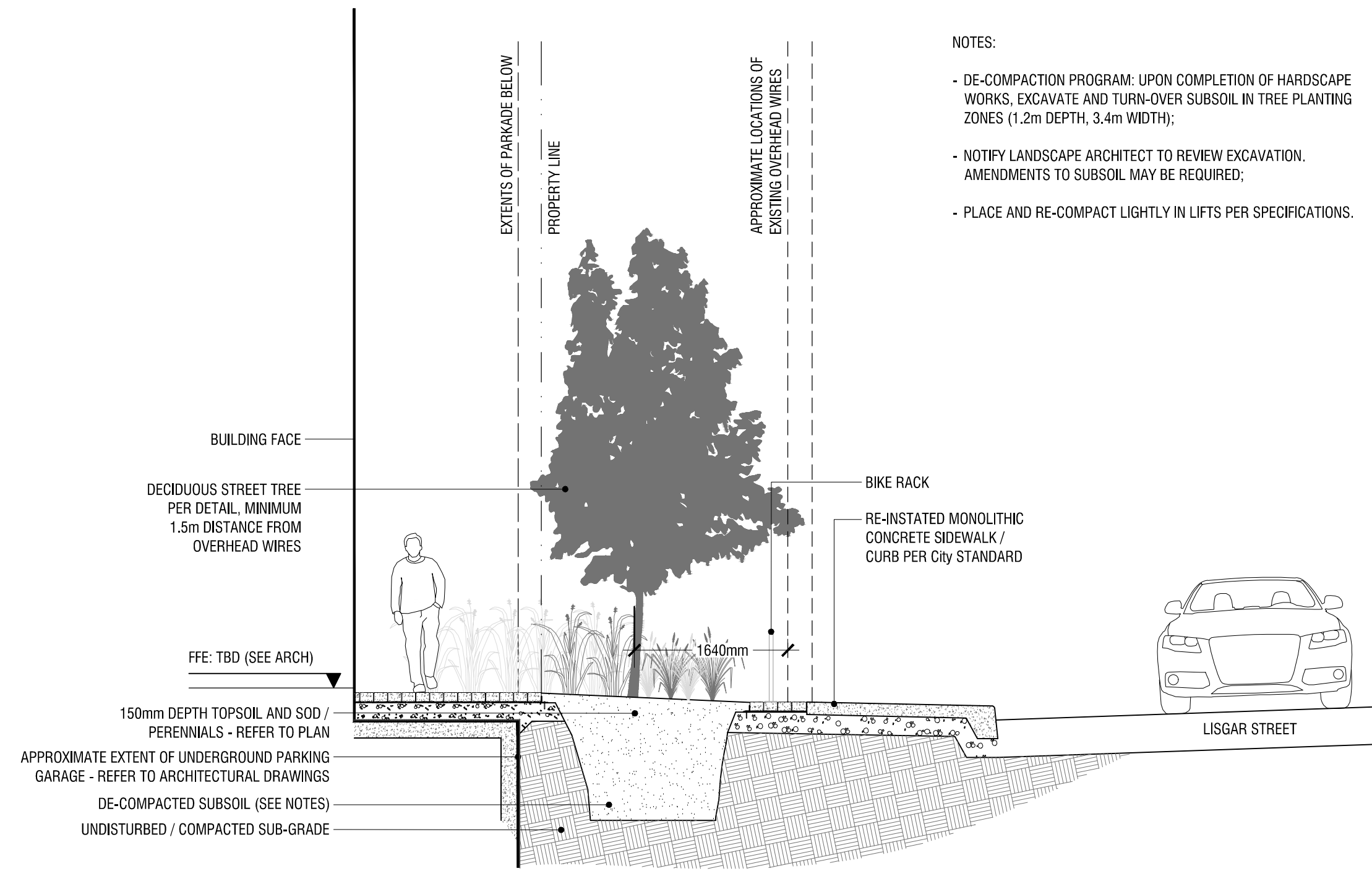
6 **SPHERICAL CONCRETE BOLLARDS**
L3 **n.t.s.**

rev'n	description / la description	yyyy/mm/dd
04	issue for SPA	2020/10/28
03	issue for SPA Coordination	2020/10/22
02	issue for SPA Coordination	2020/10/15
01	issue for Client Review	2020/10/14
00	issue for Coordination	2020/09/28



CONSTRUCTION DETAILS

designed / conçu	drawn / dessiné	reviewed / examiné
PM / DF	PM	DF
date	project number / No. du projet	
Jan 2020	X ##-##	



- NOTES:
- DE-COMPACTION PROGRAM: UPON COMPLETION OF HARDSCAPE WORKS, EXCAVATE AND TURN-OVER SUBSOIL IN TREE PLANTING ZONES (1.2m DEPTH, 3.4m WIDTH);
 - NOTIFY LANDSCAPE ARCHITECT TO REVIEW EXCAVATION. AMENDMENTS TO SUBSOIL MAY BE REQUIRED;
 - PLACE AND RE-COMPACT LIGHTLY IN LIFTS PER SPECIFICATIONS.

1 SECTION THROUGH LISGAR FRONTAGE
L4 n.t.s.

Copyright Reserved
 The Copyrights to all designs and drawings are the property of Fotenn Consultants Inc. Unauthorized reproduction or use is forbidden. DO NOT SCALE DRAWING
 Copyright réservés
 Les droits d'auteur à tous les modèles et dessins sont la propriété de Fotenn Consultants Inc. Reproduction ou utilisation non autorisée est interdite. NE PAS L'ÉCHELLE DE DESSIN

Client / Client



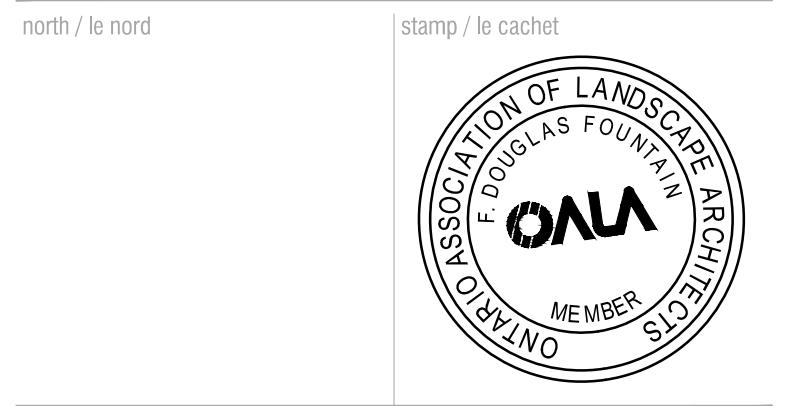
key plan / plan repère

PRELIMINARY
 NOT FOR CONSTRUCTION

legend / légende

rev'n	description / la description	yyyy/mm/dd
04	issue for SPA	2020/10/28
03	issue for SPA Coordination	2020/10/22
02	issue for SPA Coordination	2020/10/15
01	issue for Client Review	2020/10/14
00	issue for Coordination	2020/09/28

FOTENN Planning + Design
 396 Cooper Street, Suite 300 613.730.5709
 Ottawa, ON, CANADA K2P 2H7 fotenn.com



project / projet
176 NEPEAN & 293-307 LISGAR

drawing / dessin

SECTIONS

designed / conçu	drawn / dessiné	reviewed / examiné
PM / DF	PM	DF
date	project number / No. du projet	
Jan 2020	X ##-##	