

PART OF BLOCK 1  
REGISTERED PLAN 492  
CITY OF OTTAWA

FARLEY, SMITH & DENIS SURVEYING LTD. 2020

Scale 1: 200  
0 2.5 5 10 15 20 metres

Metric Note  
Distances and coordinates on this plan are in metres and can be converted to feet by dividing by 0.3048.

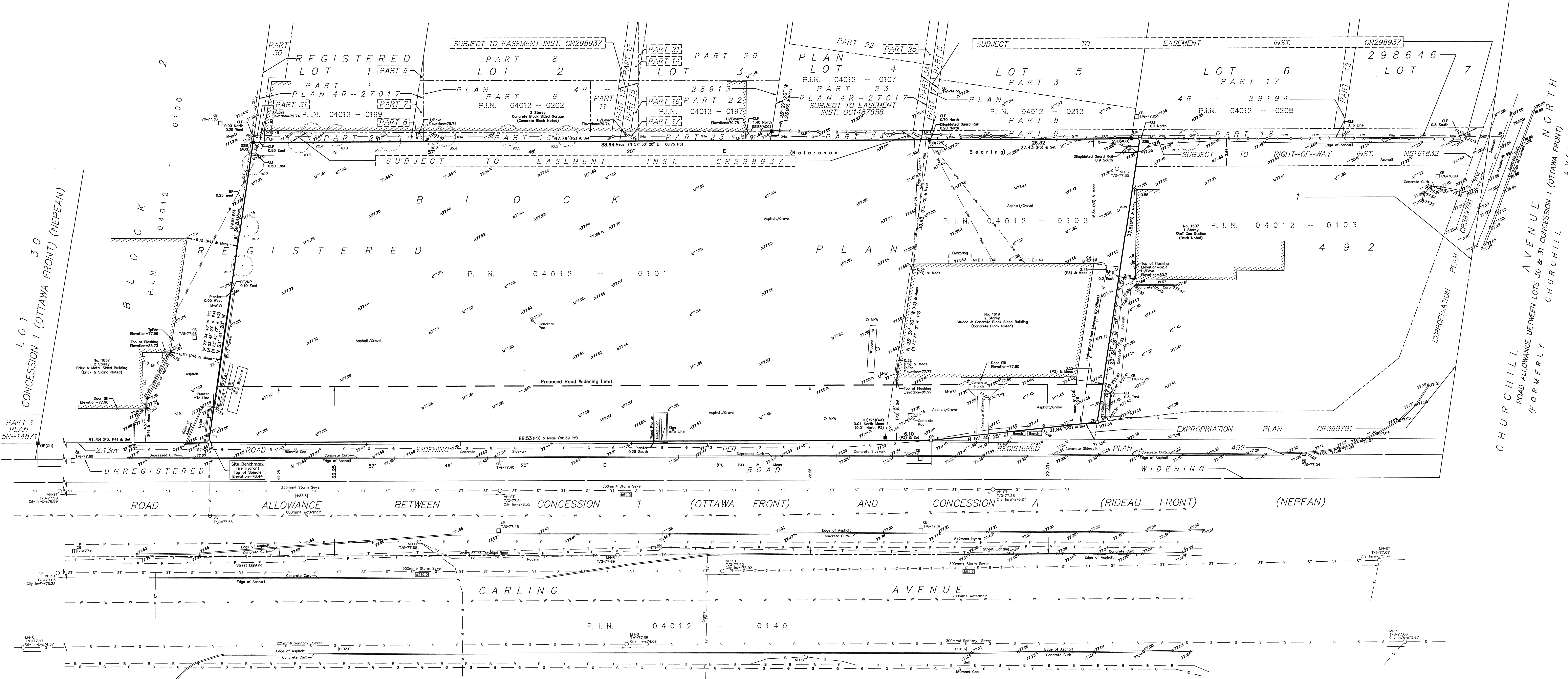
Distance Note  
Distances shown on this plan are ground distances and can be converted to grid distances by multiplying by the combined scale factor of 0.99993.

Bearing Note  
Bearings are grid and are referred to the Central Meridian of MTM Zone 9 (76°30' West Longitude) Nad-83 (Original).

Elevation Notes  
1. Elevations shown are geodetic and are referred to Geodetic Datum CGVD-1928 -1978. (See AOS Job No. 18524-17)  
2. It is the responsibility of the user of this information to verify that the job benchmark has not been altered or disturbed and that its relative elevation and description agrees with the information shown on this drawing.

Utility Notes  
1. This drawing cannot be accepted as acknowledging all of the utilities and it will be the responsibility of the user to contact the respective utility authorities for confirmation.  
2. Only visible surface utilities were located.  
3. Underground utility data derived from City of Ottawa utility sheet reference: F-04-35, F-04-37, 6047p&1 & A19c-3.  
4. Sanitary and storm sewer grades and inverts were compiled from: City of Ottawa Plans.  
5. A field location of underground plant by the pertinent utility authority is mandatory before any work involving breaking ground, probing, excavating etc.

Notes & Legend table with symbols and descriptions for survey monuments, bearings, elevations, and utility types.



Surveyor's Certificate  
I certify that:  
1. This survey and plan are correct and in accordance with the Survey Act, the Surveyors Act and the Regulations made under them.  
2. The survey was completed on the 10th day of November, 2020.  
Date: Nov. 12/20  
Daniel Robinson  
Ontario Land Surveyor

FARLEY, SMITH & DENIS SURVEYING LTD.  
ONTARIO LAND SURVEYORS  
CANADA LAND SURVEYORS  
190 COLONNADE ROAD, OTTAWA, ONTARIO K2E 7J5  
TEL: (613) 727-8226 FAX: (613) 727-3826