

LEGEND:

- PROPERTY LINE
- BUILDING OVER HANG
- UNDERGROUND PARKING
- 1.8m WOOD FENCE
- NEW DECIDUOUS TREE
- EXISTING DECIDUOUS TREE
- LIGHT DUTY ASPHALT
- HEAVY DUTY ASPHALT
- UNIT PAVER
- LIGHT DUTY CONCRETE
- RIVER ROCK
- SOD
- NATIVE ONTARIO SEED MIX
- SHRUBS
- PERENNIAL
- BIKE RACK
- NEW CURB

KEY MAP, NTS

L-1 GENERAL NOTES

- All general site information and conditions compiled from architect's and engineer's plans and surveys.
- Do not scale this drawing.
- Report any discrepancies prior to commencing work. No responsibility is born by the Landscape Architect for unknown subsurface conditions.
- Reinstate all areas and items damaged as a result of construction activities to the satisfaction of the Landscape Architect.
- Drawing may not be used for construction until signed by Landscape Architect as issued for construction.
- The accuracy of the position of utilities is not guaranteed.
- Individual utility co. must be contacted for confirmation of utility existence and location prior to digging.
- This drawing is an instrument of service and requires the permission of the Landscape Architect for use. Copyright is reserved by the Landscape Architect, David M. Lashley.

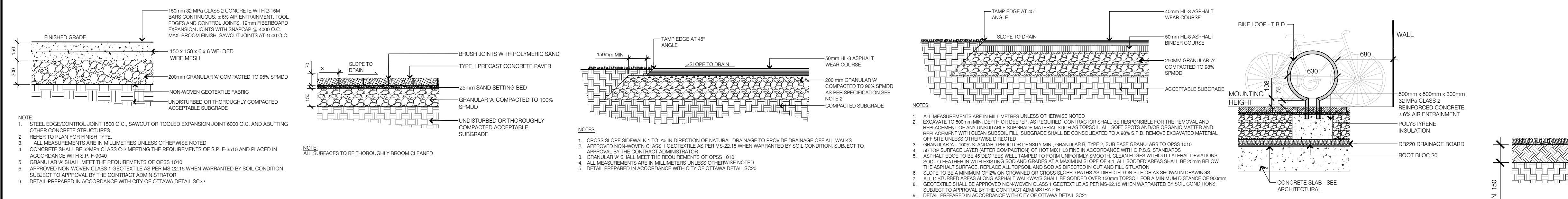
L-1 LANDSCAPE NOTES

- Plant material shall be No. 1 Grade and shall comply with the Metric Guide Specifications for Nursery Stock (latest edition), published by Canadian Nursery Trades Association.
- Plant substitutions shall not be permitted unless approved by the Landscape Architect.
- Obtain approval of planting prior to digging.
- Topsoil shall be garden silt mixture sandy loam with min. 5% organic matter and peat moss added at ratio of 1:10, topsoil to be approved by Landscape Architect.

1 LAYOUT PLAN 1:200

GENERAL PLANT LIST

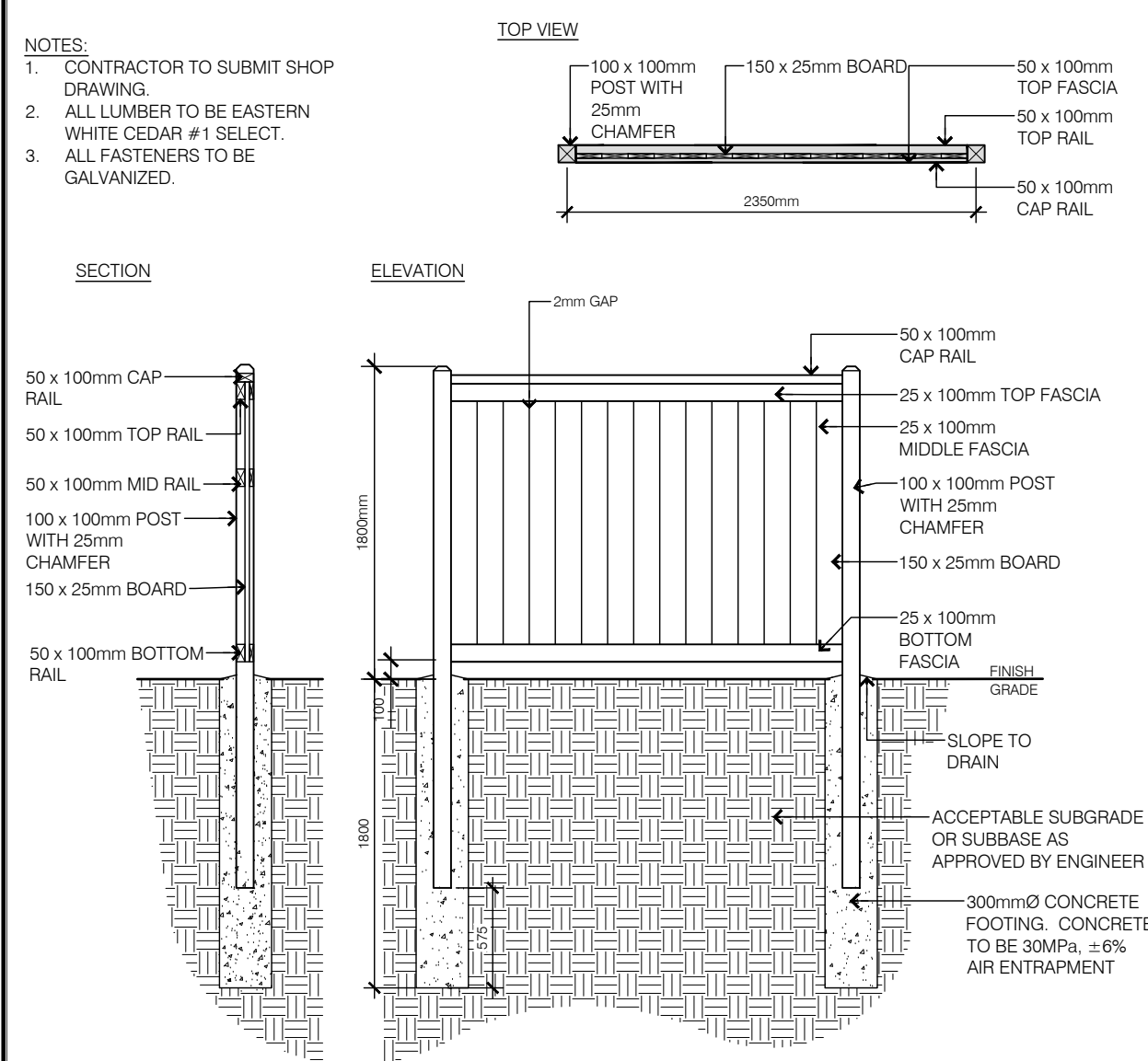
KEY	QTY	BOTANICAL NAME	COMMON NAME	SIZE	COMMENTS
DECIDUOUS TREES					
AC	2	<i>Aralianchier canadensis</i>	Servino Berry	50mm CAL.	W.B.
ARA	3	<i>Acer rubrum Armstrong</i>	Armstrong Maple	50mm CAL.	W.B.
CO	4	<i>Celtis occidentalis</i>	Common Hackberry	50mm CAL.	W.B.
GT	3	<i>Gleditsia triacanthos var. inermis 'Shademaster'</i>	Shademaster Honeylocust	50mm CAL.	W.B.
SR	2	<i>Syringa reticulata Ivory Silk</i>	Japanese Tree Lilac	50mm CAL.	W.B.
SHRUB					
Cd	93	<i>Cotoneaster dammeri</i>	Bearberry Cotoneaster	1 GAL	POTTED
Rt	27	<i>Rhus typhina</i>	Staghorn Sumac	1 GAL	POTTED
GRASS/ PERENNIALS					
ca	18	<i>Calamagrostis acutifloris Karri Foerster</i>	Feather Reed Grass	1 GAL	POTTED
hdg	16	<i>Hemerocallis Designer Gold</i>	Daylily	1 GAL	POTTED
rh	19	<i>Rudbeckia hirta</i>	Black Eye-Susan	1 GAL	POTTED



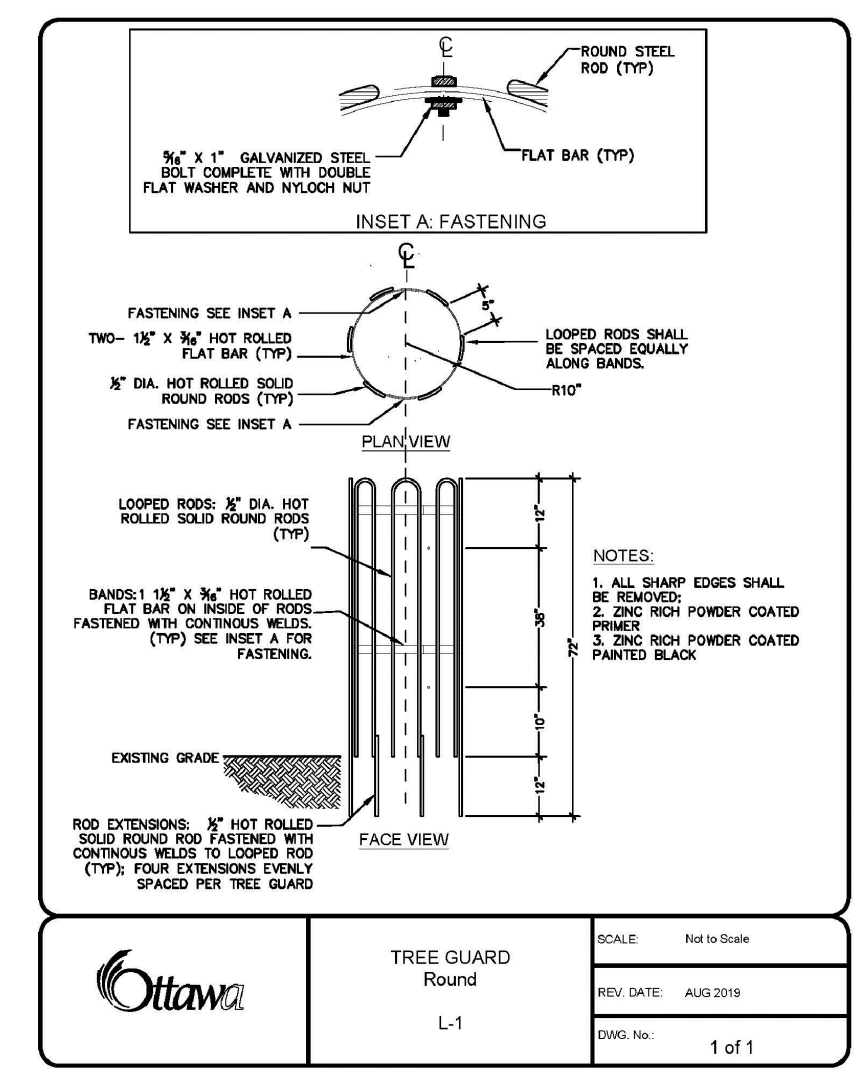
2 LIGHT DUTY CONCRETE 1:20, **3 LIGHT DUTY UNIT PAVERS** 1:20, **4 LIGHT DUTY ASPHALT** 1:20, **5 HEAVY DUTY ASPHALT** 1:20, **6 BIKE RACK** 1:30, **7 SOD** 1:20, **8 PLANT CUTTING** 1:30

ANDREW MCCREIGHT
MANAGER (A), DEVELOPMENT REVIEW CENTRAL
PLANNING, REAL ESTATE & ECONOMIC DEVELOPMENT
DEPARTMENT, CITY OF OTTAWA

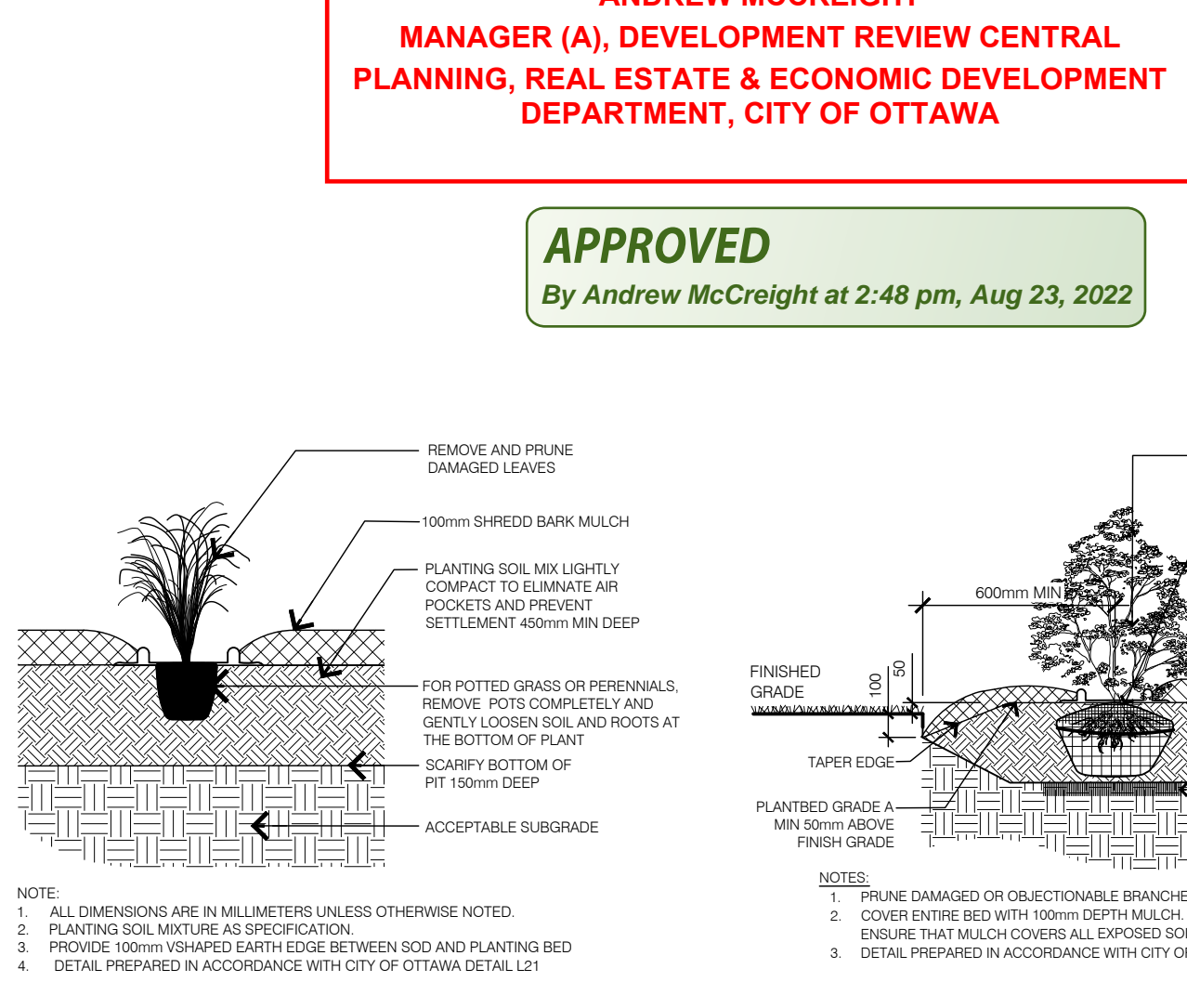
APPROVED
 By Andrew McCreight at 2:48 pm, Aug 23, 2022



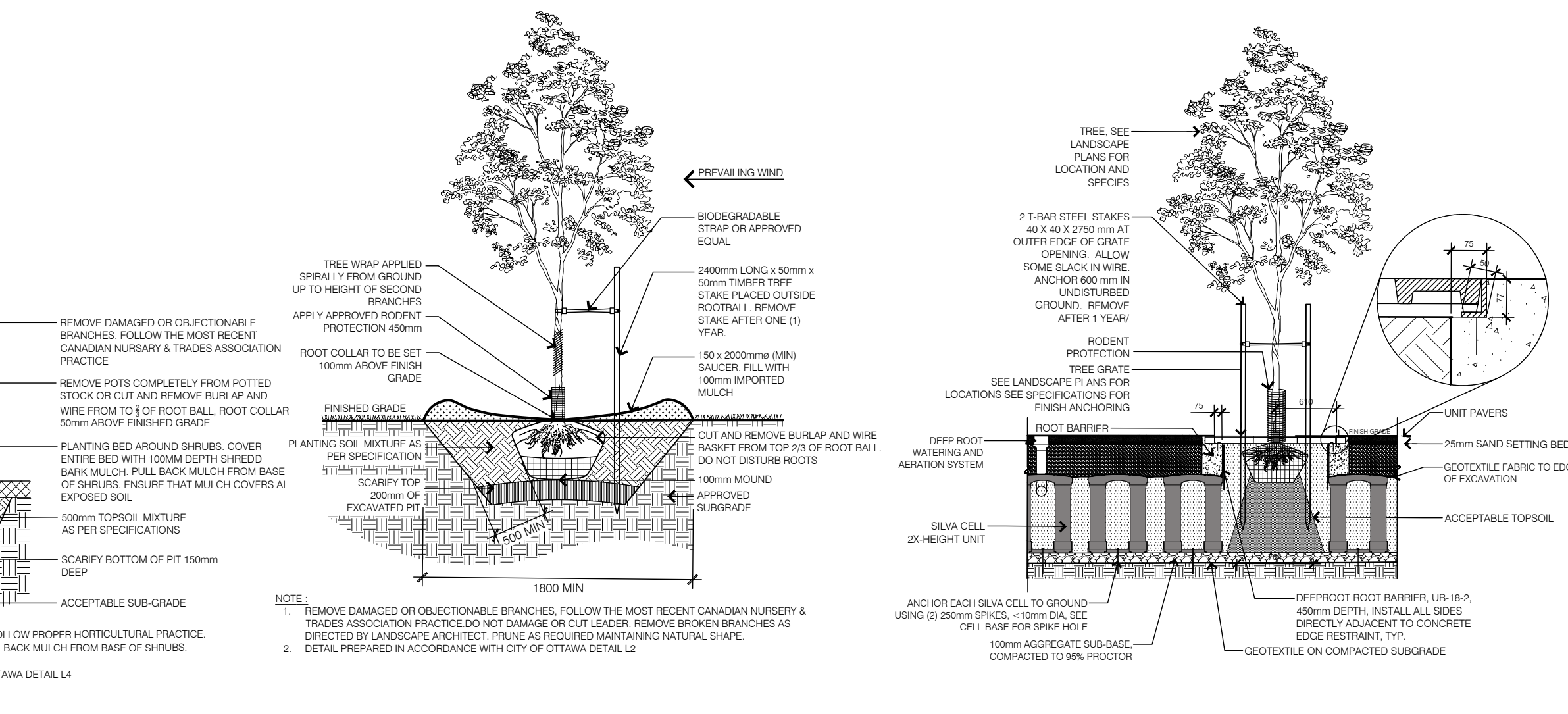
9 1.8m WOOD FENCE 1:40



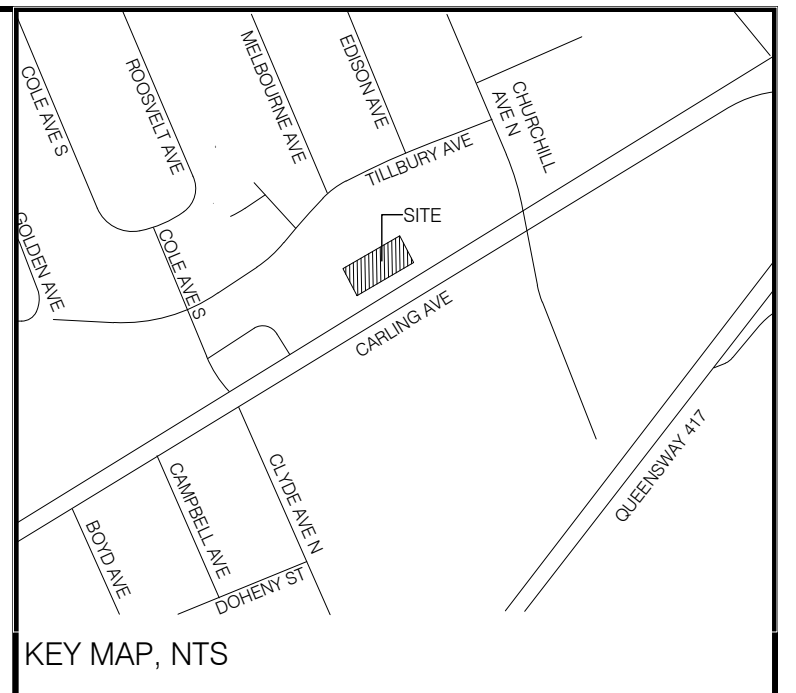
10 CITY TREE GUARD 1:30



11 PERENNIAL/GRASS PLANTING 1:30, **12 GRASS/ PERENNIAL PLANTING** 1:30, **13 DECIDUOUS TREE PLANTING** 1:40



14 TREE IN GRATE WITH CELLS 1:50



L-1 GENERAL NOTES

- All general site information and conditions compiled from architect's and engineer's plans and surveys.
- Do not scale this drawing.
- Report any discrepancies prior to commencing work. No responsibility is born by the Landscape Architect for unknown subsurface conditions.
- Reinstate all areas and items damaged as a result of construction activities to the satisfaction of the Landscape Architect.
- Drawing may not be used for construction until signed by Landscape Architect as issued for construction.
- The accuracy of the position of utilities is not guaranteed.
- Individual utility co. must be contacted for confirmation of utility existence and location prior to digging.
- This drawing is an instrument of service and requires the permission of the Landscape Architect for use. Copyright is reserved by the Landscape Architect, David M. Lashley.

L-1 LANDSCAPE NOTES

- Plant material shall be No. 1 Grade and shall comply with the Metric Guide Specifications for Nursery Stock (latest edition), published by Canadian Nursery Trades Association.
- Plant substitutions shall not be permitted unless approved by the Landscape Architect.
- Obtain approval of planting prior to digging.
- Topsoil shall be garden silt mixture sandy loam with min. 5% organic matter and peat moss added at ratio of 1:10, topsoil to be approved by Landscape Architect.

NO.	DATE	DESCRIPTION
07		
06		
05		
04	2022/03/09	SITE PLAN SUBMISSION
03	2021/04/16	FOR COORDINATION
02	2021/02/05	CLIENT COORDINATION
01	2020/11/03	SITE PLAN SUBMISSION

NO.	DATE	DESCRIPTION
07		
06		
05		
04	2022/03/09	SITE PLAN SUBMISSION
03	2021/04/16	FOR COORDINATION
02	2021/02/05	CLIENT COORDINATION
01	2020/11/03	SITE PLAN SUBMISSION

CONSULTANT:

LASHLEY + ASSOCIATES
 LANDSCAPE ARCHITECTURE AND SITE ENGINEERING

3340 EASTERN AVENUE
 OTTAWA, ONTARIO
 K1M 1S7
 TEL: 416-223-8887
 FAX: 416-223-8888
 www.lashley.ca

PROJECT:

1655 CARLING AVENUE

CARLING AVENUE
 OTTAWA, ONTARIO

DRAWING TITLE:

SPA - LANDSCAPE PLAN

DATE: 2020/10/23 **DRAWING NO.:**

SCALE: As Shown

DRAWN BY: EL

LA PROJECT NO.: 20785-1