

CORONATION (REGISTERED PLAN 605) STREET

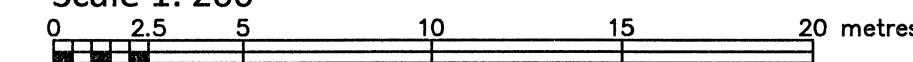
P. I. N. 04256 - 04256

TOPOGRAPHIC PLAN OF SURVEY OF

PART OF BLOCK F REGISTERED PLAN 605 CITY OF OTTAWA

FARLEY, SMITH & DENIS SURVEYING LTD. 2020

Scale 1: 200



Metric Note

Distances and coordinates on this plan are in metres and can be converted to feet by dividing by 0.3048.

Bearing Note

Bearings are astronomic and are referred to the Southerly limit of Coronation Street having a bearing of N 71° 06' 00" W as shown on Plan SR-7688.

Elevation Notes

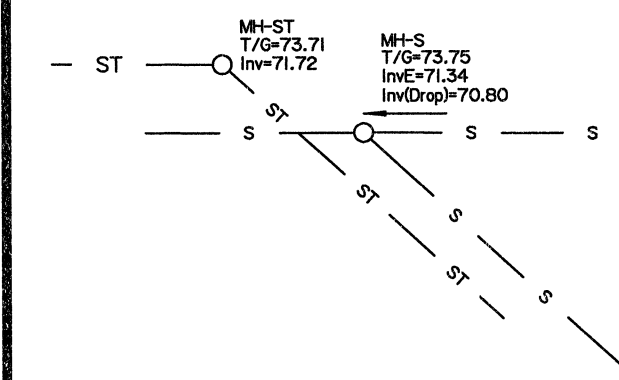
- 1. Elevations shown are geodetic and are referred to Geodetic Datum CGVD-1928 :1978.
2. It is the responsibility of the user of this information to verify that the job benchmark has not been altered or disturbed and that its relative elevation and description agrees with the information shown on this drawing.

Utility Notes

- 1. This drawing cannot be accepted as acknowledging all of the utilities and it will be the responsibility of the user to contact the respective utility authorities for confirmation.
2. Only visible surface utilities were located.
3. Underground utility data derived from City of Ottawa utility sheet reference: F-1-c & 14012.
4. Sanitary and storm sewer grades and inverts were derived from: Field measurement.
5. A field location of underground plant by the pertinent utility authority is mandatory before any work involving breaking ground, probing, excavating etc.

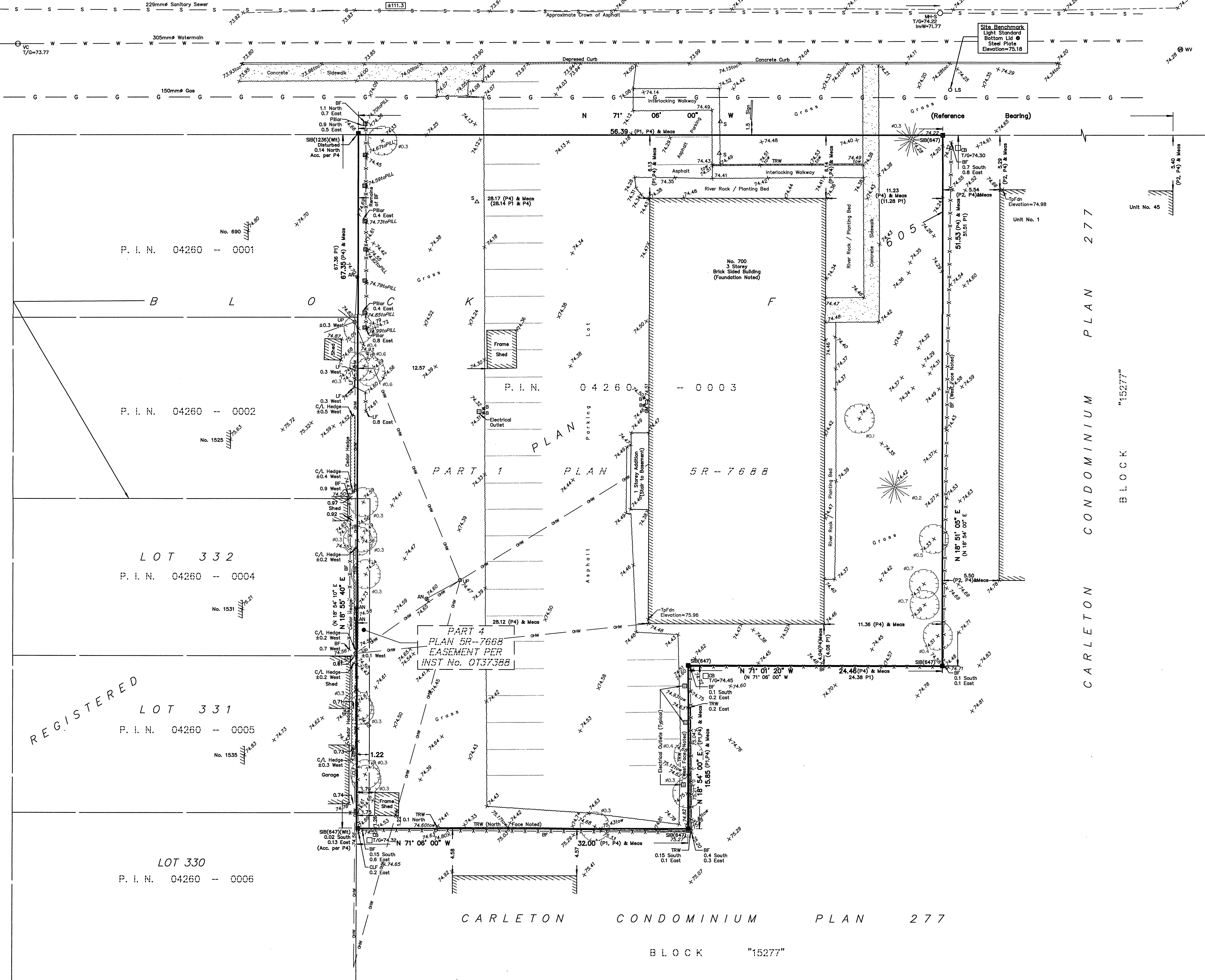
Notes & Legend

Table with 2 columns: Symbol and Description. Includes symbols for Survey Monument Planted, Survey Monument Found, Standard Iron Bar, Short Standard Iron Bar, Iron Bar, Witness, Measured, Accepted, Registered Plan 605, Plan SR-7688, Carleton Condominium Plan 277, Plan by (1236) dated June 27, 2002, Plan by (1692) dated September 28, 2011 (File No. 344-11), Maintenance Hole (Storm), Maintenance Hole (Sanitary), Valve Chamber (Watermain), Catch Basin, Water Valve, Gas Meter, Bollard, Sign, Undergound Storm Sewer, Undergound Sanitary Sewer, Undergound Water, Undergound Gas, Overhead Wires, Utility Pole, Anchor, Light Standard, Diameter, Chain Link Fence, Board Fence, Lattice Fence, Timber Retaining Wall, Invert, Top of Grate Elevation, Top of Foundation Elevation, Top of Pier/Elevation, Top of Curb Elevation, Top of Wall Elevation, Centreline, Location of Elevations, Property Line, Deciduous Tree, Coniferous Tree.



BOTS FORD STREET

CARLETON CONDOMINIUM PLAN 277



CARLETON CONDOMINIUM PLAN 277

BLOCK "15277"

Surveyor's Certificate section containing a declaration of accuracy, the date of August 2020, the signature of Daniel Robinson, and the Ontario Land Surveyors logo.

FARLEY, SMITH & DENIS SURVEYING LTD.

WARNING: NO PERSON MAY COPY, REPRODUCE, DISTRIBUTE OR ALTER THIS PLAN IN WHOLE OR IN PART WITHOUT THE WRITTEN PERMISSION OF FARLEY, SMITH & DENIS SURVEYING LTD. © FARLEY, SMITH & DENIS SURVEYING LTD., 2020.

ONTARIO LAND SURVEYORS CANADA LAND SURVEYORS 190 COLONNADE ROAD, OTTAWA, ONTARIO K2E 7J5 TEL: (613) 727-8226 FAX: (613) 727-1826