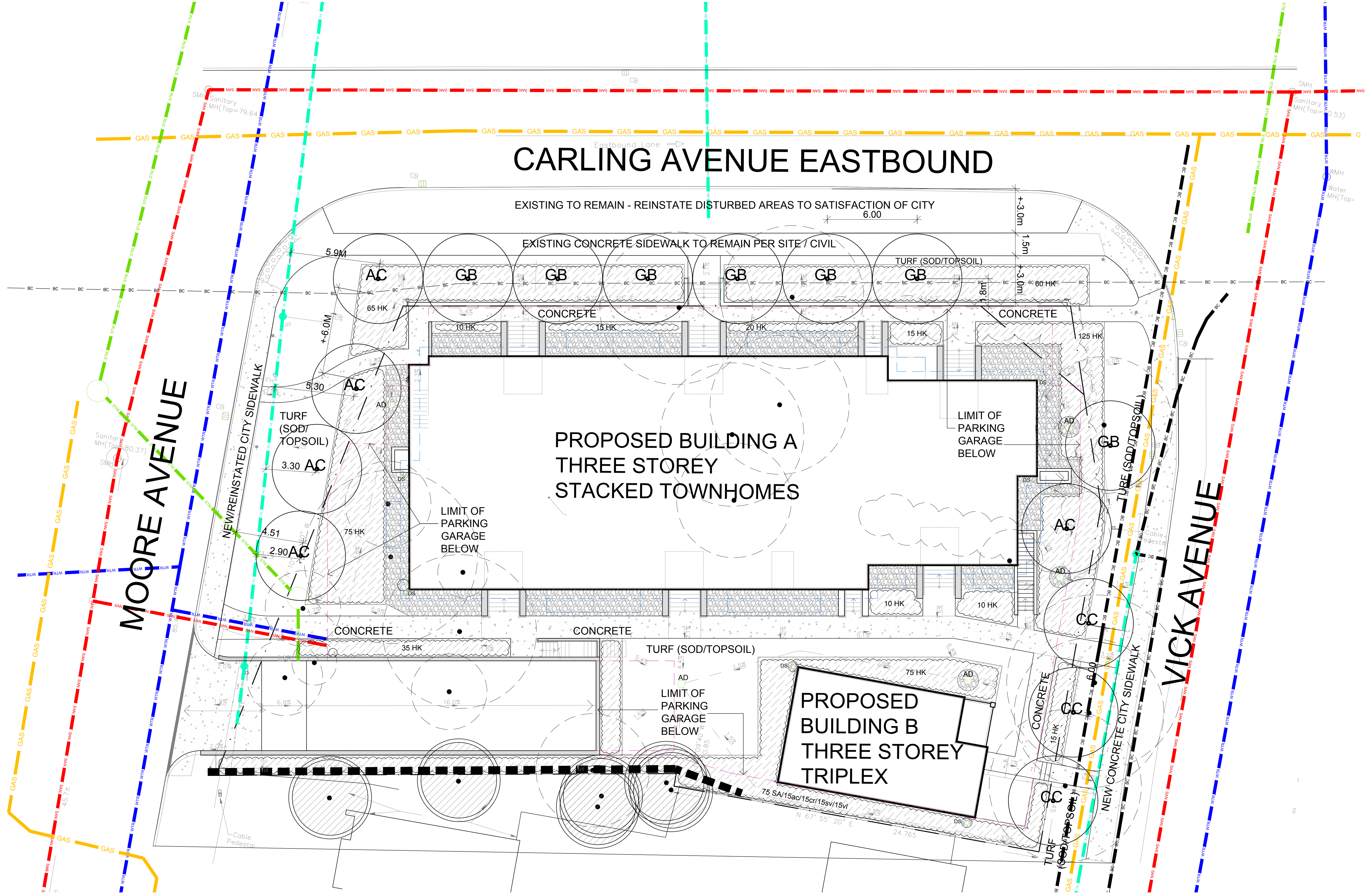


Drawing Remains the Property of/Copyright Reserved by Gino J. Aiello Landscape Architect. Do Not Use or Reproduce Without Approval of Gino J. Aiello.
NOT To Be Used For Construction **Unless** indicated by Revision: **"FOR LANDSCAPE CONSTRUCTION"**
Contractor is Responsible for Verification of Site Locations of all Utilities. Report any Discrepancies Between Site and Drawing Immediately to Gino J. Aiello. Do NOT Proceed Until Clarified.
TURF AREAS TO BE SOD C/W 150MM DEPTH TOPSOIL ON APPROVED SUBGRADE | SOD TO BE #1 GRADE TURFGRASS NURSERY SOD per NSGA - Fine Fescue/Kentucky Bluegrass Sod | PLANTING MIX TO BE APPROVED BY LANDSCAPE ARCHITECT | PLANT MATERIAL TO MEET CNLA STANDARDS/BE APPROVED BY LANDSCAPE ARCHITECT PRIOR TO PLANTING | ALL MATERIALS & WORK TO BE MAINTAINED UNTIL FINAL ACCEPTANCE, (MOWING TURF, WEEDING BEDS, WATERING TURF & PLANTS) & INCLUDE 1 YEAR WARRANTY FROM DATE OF FINAL ACCEPTANCE | PROVIDE WATERING OF ALL PLANT MATERIAL AS REQUIRED FOR PROPER ESTABLISHMENT, UNTIL END OF WARRANTY PERIOD | REFER TO CIVIL ENGINEER'S DRAWING FOR ELEVATIONS / GRADING |
 The Landscape Plan is to be read in conjunction with the grading, servicing, site and survey plan | Bare root material to be planted in season only | All plant material locations to be staked on site by the landscape contractor and checked by the landscape architect prior to planting | All trees to be preserved on or directly adjacent to the site will be protected | Plant material are to be installed a minimum of: 3.0m away from any part of any hydro transformer, 3.0m corridor between a fire hydrant and the curb, a 2.5m radius beside or behind a fire hydrant, 2.0m from any servicing/utility line or structure |

CARLING AVENUE EASTBOUND



REFER TO TCR BY IFS

- Existing Tree to Remain
- Existing Tree to be Removed
- Protection for Existing Trees

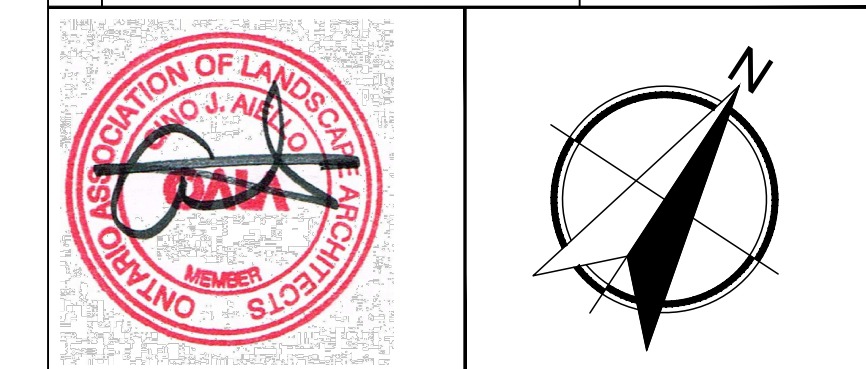
LANDSCAPE PLAN LEGEND

- Proposed Coniferous Tree
- Proposed Deciduous Tree
- Proposed Planting Bed
- Proposed Riverwash Stone On Filter Cloth
- Proposed Area Drain
- Proposed Downspout

REFER TO CIVIL/CUP BY MP

- U/G Water Service
- U/G Storm Service
- U/G Sanitary Service
- O/H Hydro Service
- U/G Gas Service
- U/G TelCo Service

3	THIRD SUBMISSION SPC	JUNE 9 2021
2	SECOND SUBMISSION SPC	MARCH 17 2021
1	FIRST SUBMISSION SPC	NOVEMBER 20 2020
No.	Revision	Date



Property Owner: **1408505 Ontario Inc.**
 c/o Holzman Consultants Inc.
 311 Richmond Road, Suite 203 | Ottawa, ON | K1Z 6X3

Gino J. Aiello landscape architect www.GJALA.com
 Gino@GJALA.com (613) 852 1343
 110 Didsbury Road Unit # 9 | Ottawa Ontario | K2T 0C2

Project: **RESIDENTIAL DEVELOPMENT**
 2830 Carling Avenue Ottawa

Drawing: **Landscape Plan**

Date: **OCTOBER 2020** Sheet Number

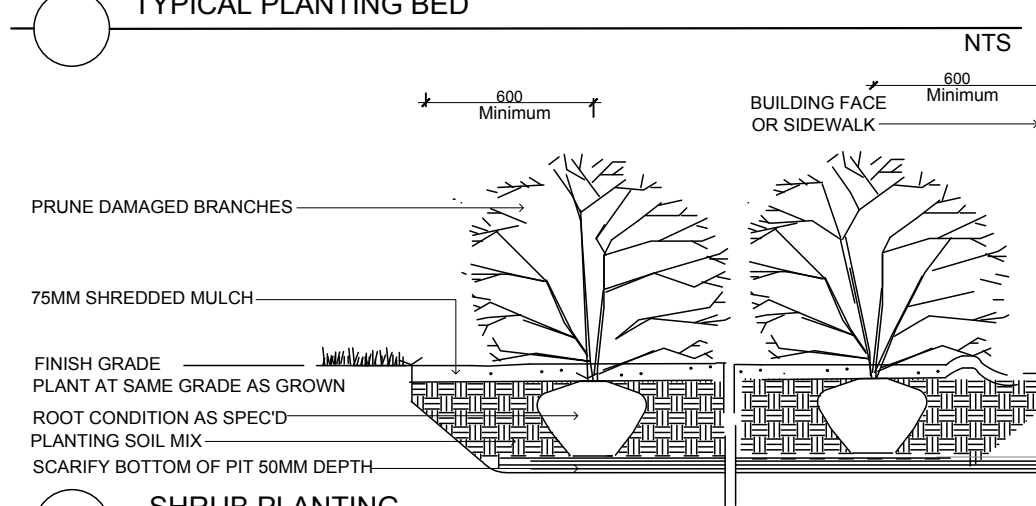
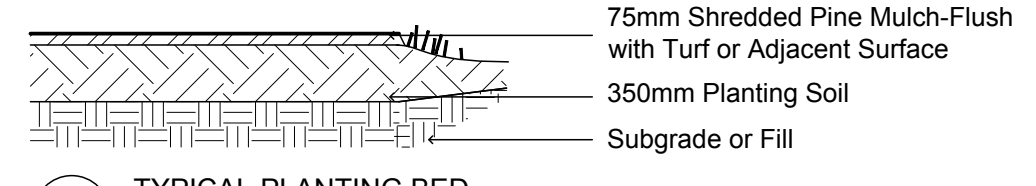
Scale: **1:125**
 City of Ottawa
 Dwg - 18307

D07-12-20-1063

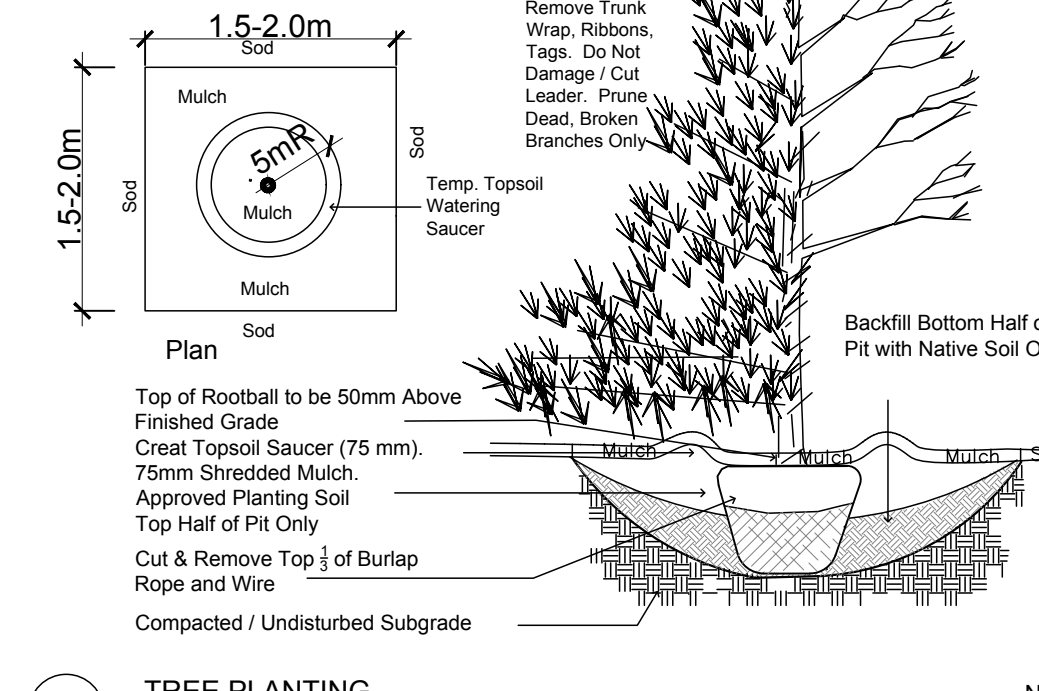
TREES 2830 CARLING					
Code	Qty.	Botanical Name	Common Name	Size	Condition
AC	5	Amelanchier canadensis	Serviceberry	50mm cal	B + B specimen
CC	3	Crataegus crus-galli 'Inermis'	Thornless Cockspur Hawth	50mm cal	B + B specimen
GB	7	Ginkgo biloba	Maidenhair Tree	70mm cal	B + B specimen

SHRUBS 2830 CARLING					
Code	Qty.	Botanical Name	Common Name	Size	Condition
ac	15	Amelanchier canadensis	Serviceberry	60cm Ht.	Pot
cr	15	Cornus racemosa	Grey Dogwood	60cm Ht.	Pot
HK	530	Hypericum kalmianum	St. John's Wort	30cm Ht.	Pot
SA	75	Spiraea alba	Meadowsweet	50cm Ht.	Pot
sva	15	Syringa vulgaris 'Alba'	White Common Lilac	60cm Ht.	Pot
vl	15	Viburnum lentago	Nannyberry	60cm Ht.	Pot
PV	75	Panicum virgatum	Switch Grass	9cm Pot	

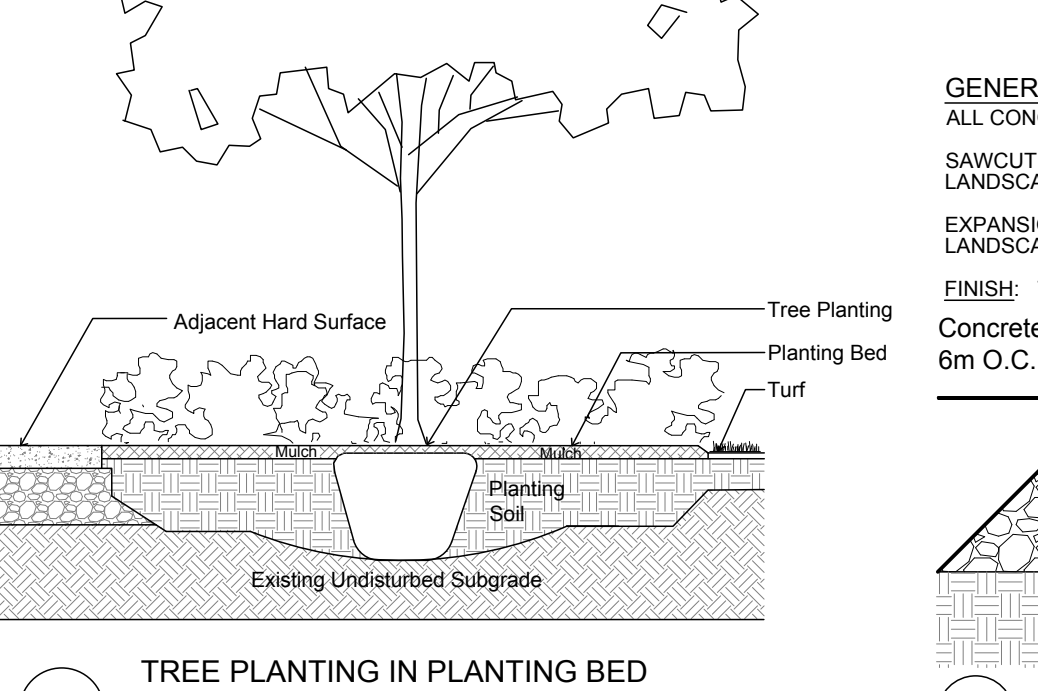
During Excavation/Bed Preparation if Extreme Conditions are Encountered (Water, Rock, Gravel...) that could Effect Planting, Notify GJALA Immediately.
 75mm Shredded Pine Mulch-Flush with Turf or Adjacent Surface



Remove Trunk Wrap, Ribbons, Tags, Do Not Damage / Cut Leader, Prune Dead, Broken Branches Only
 Temp. Topsoil Watering Sawyer
 Backfill Bottom Half of Pit with Native Soil Only



GENERAL CONCRETE NOTES:
 ALL CONCRETE FINISHES TO BE APPROVED BY GJA LANDSCAPE ARCHITECT.
 SAWCUT LAYOUT FOR ALL AREAS TO BE MARKED ON SITE IN RED CHALK, REVIEWED, ADJUSTED AND APPROVED BY GJA LANDSCAPE ARCHITECT-PRIOR TO ANY CUTTING.
 EXPANSION JOINT LAYOUT FOR ALL AREAS TO BE LAID OUT ON SITE, REVIEWED, ADJUSTED AND APPROVED BY GJA LANDSCAPE ARCHITECT-PRIOR TO ANY CONCRETE POURING.
 FINISH: TOOL EDGE FIRST, THEN WIPE OFF TOOL MARKS WHILE APPLYING FINISH
 Concrete 125mm Thick, 32mpa, 6% Air Entrainment 6x6 Wire Mesh, Fibre Exp. Joints at all Hard Edges and 6m O.C. in Both Directions, Sawcut Control Joints (1" depth) 2.0m O.C. minimum



CONCRETE PAVING
 32 MPA C2 c/w FLOAT FINISH - TOOL EDGE FIRST, THEN WIPE OFF TOOL MARKS WHILE APPLYING FINISH

