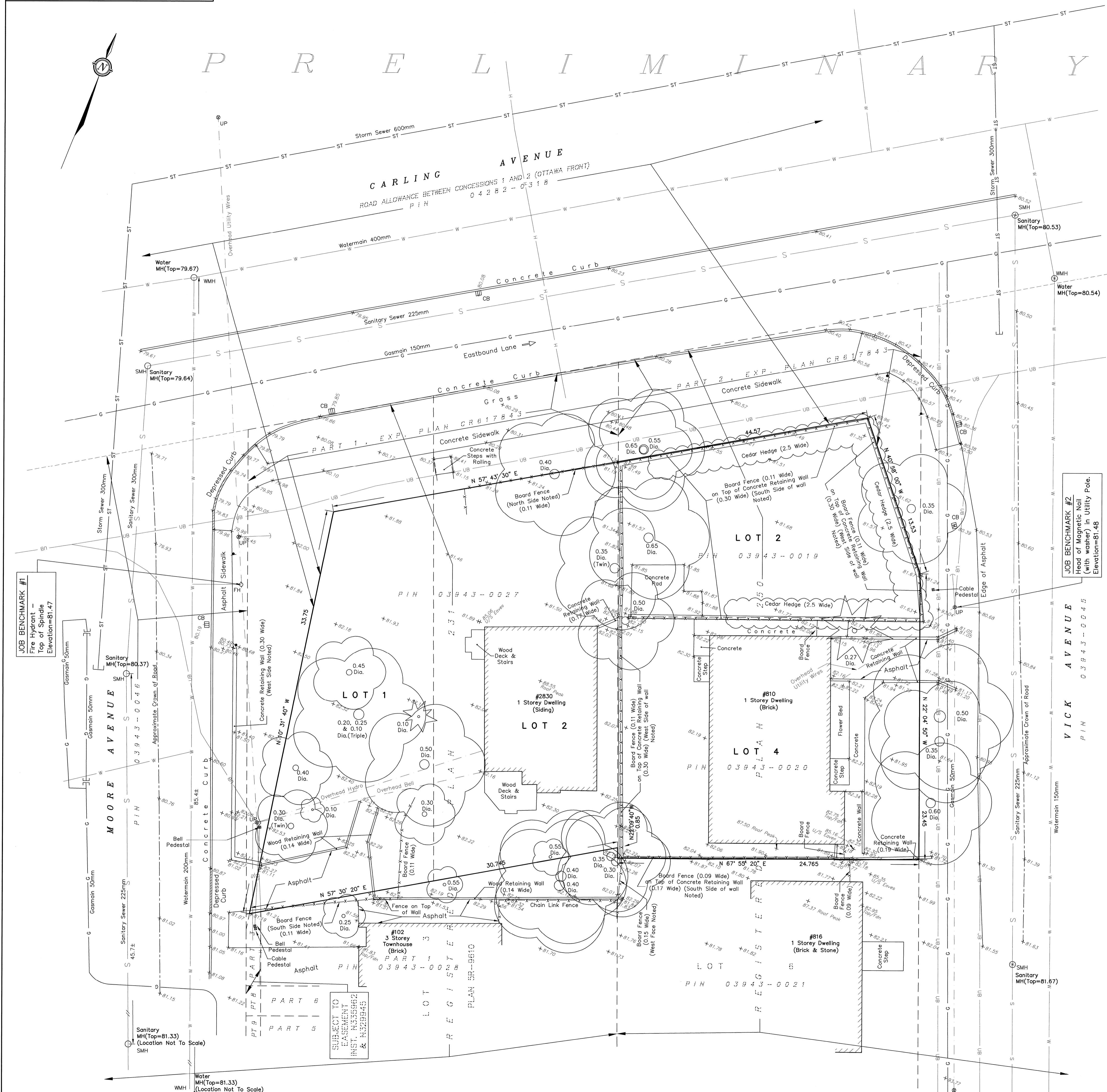
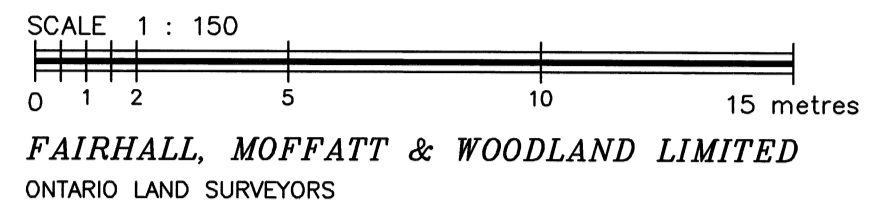


METRIC
 DISTANCES AND ELEVATIONS SHOWN ON THIS PLAN ARE IN METRES
 AND CAN BE CONVERTED TO FEET BY DIVIDING BY 0.3048



TOPOGRAPHIC SURVEY OF
 LOTS 1 & 2
 REGISTERED PLAN 231
 AND
 LOTS 2 & 4
 REGISTERED PLAN 250
 CITY OF OTTAWA



NOTES
 BEARINGS ARE ASTRONOMIC AND ARE REFERRED TO THE WESTERLY LIMIT OF WICK AVENUE SHOWN ON PLAN BY (AOG) DATE MAY 3, 1974, AS HAVING A BEARING OF N22°04'50"W.

ELEVATION NOTES
 1. ELEVATIONS SHOWN HEREON ARE REFERRED TO GEODETIC DATUM.
 2. ELEVATIONS FOR MANHOLE COVERS AND CATCH BASINS HAVE TO BE INDEPENDENTLY CONFIRMED BEFORE THEY CAN BE ACCEPTED FOR FINAL DESIGN OR CONSTRUCTION PURPOSES.
 3. IT IS THE RESPONSIBILITY OF THE USER OF THIS INFORMATION TO VERIFY THAT THE JOB BENCHMARK HAS NOT BEEN ALTERED OR DISTURBED AND THAT ITS RELATIVE ELEVATION AND DESCRIPTION AGREE WITH THE INFORMATION SHOWN ON THIS DRAWING.
 4. ELEVATIONS SHOWN ALONG FACE OF CURB ARE TOP OF ASPHALT.

- LEGEND**
- - SURVEY MONUMENT SET
 - - SURVEY MONUMENT FOUND
 - SSIB - SHORT STANDARD IRON BAR
 - IB - IRON BAR
 - φ - ROUND
 - (P) - REGISTERED PLAN 231
 - (P1) - REGISTERED PLAN 250
 - (M) - MEASURED
 - (S) - SET
 - (SU) - SOURCE UNKNOWN
 - (AOG) - ANNIS, O'SULLIVAN & VOLLEBEK LTD., O.L.S.
 - FIN - PROPERTY IDENTIFIER NUMBER
 - DIA. - DIAMETER
 - FDN - FOUNDATION
 - EXP. - EXPROPRIATION
 - U/S - UNDERSIDE
 - - OVERHEAD UTILITY WIRES
 - S- - SANITARY SEWER
 - ST- - STORM SEWER
 - W- - WATERMAIN
 - G- - GASMAIN
 - UB- - UNDERGROUND BELL
 - SL- - BURIED STREET LIGHTING WIRES
 - H- - UNDERGROUND HYDRO
 - X-X- - FENCE
 - WMH - WATER MANHOLE
 - SMH - SANITARY MANHOLE
 - UP - UTILITY POLE
 - ⊙ - DECIDUOUS TREE
 - ⊙ - DECIDUOUS TREE
 - ⊙ FH - FIRE HYDRANT
 - ⊙ CB - CATCH BASIN
 - ⊙ - GUY WIRE
 - ▲ - SIGN

SURVEYOR'S CERTIFICATE
 I CERTIFY THAT:
 1. THIS SURVEY AND PLAN ARE CORRECT AND IN ACCORDANCE WITH THE SURVEYS ACT, THE SURVEYORS ACT, THE LAND TITLES ACT AND THE REGULATIONS MADE UNDER THEM.
 2. THE SURVEY WAS COMPLETED ON

DATE _____ D. S. McMRRAN
 ONTARIO LAND SURVEYOR

<p>Fairhall Moffatt & Woodland LIMITED ONTARIO LAND SURVEYORS Surveying and Land Information Services 100-600 TRINITY FOX DRIVE, KANATA, ONTARIO K2L 4B6 TEL: (613) 591-2580 FAX: (613) 591-1495 www.fmw.on.ca</p>	JOB No. Z 1 6 8 0 0
	REFERENCE No. E 3598337, N 5024476
	SURVEY No. 1 - 231
	Scale 1 : 150

© COPYRIGHT 2019. REPRODUCTION, ALTERATION OR DISTRIBUTION OF THIS PLAN WITHOUT THE WRITTEN CONSENT OF FAIRHALL, MOFFATT & WOODLAND LIMITED IS PROHIBITED.