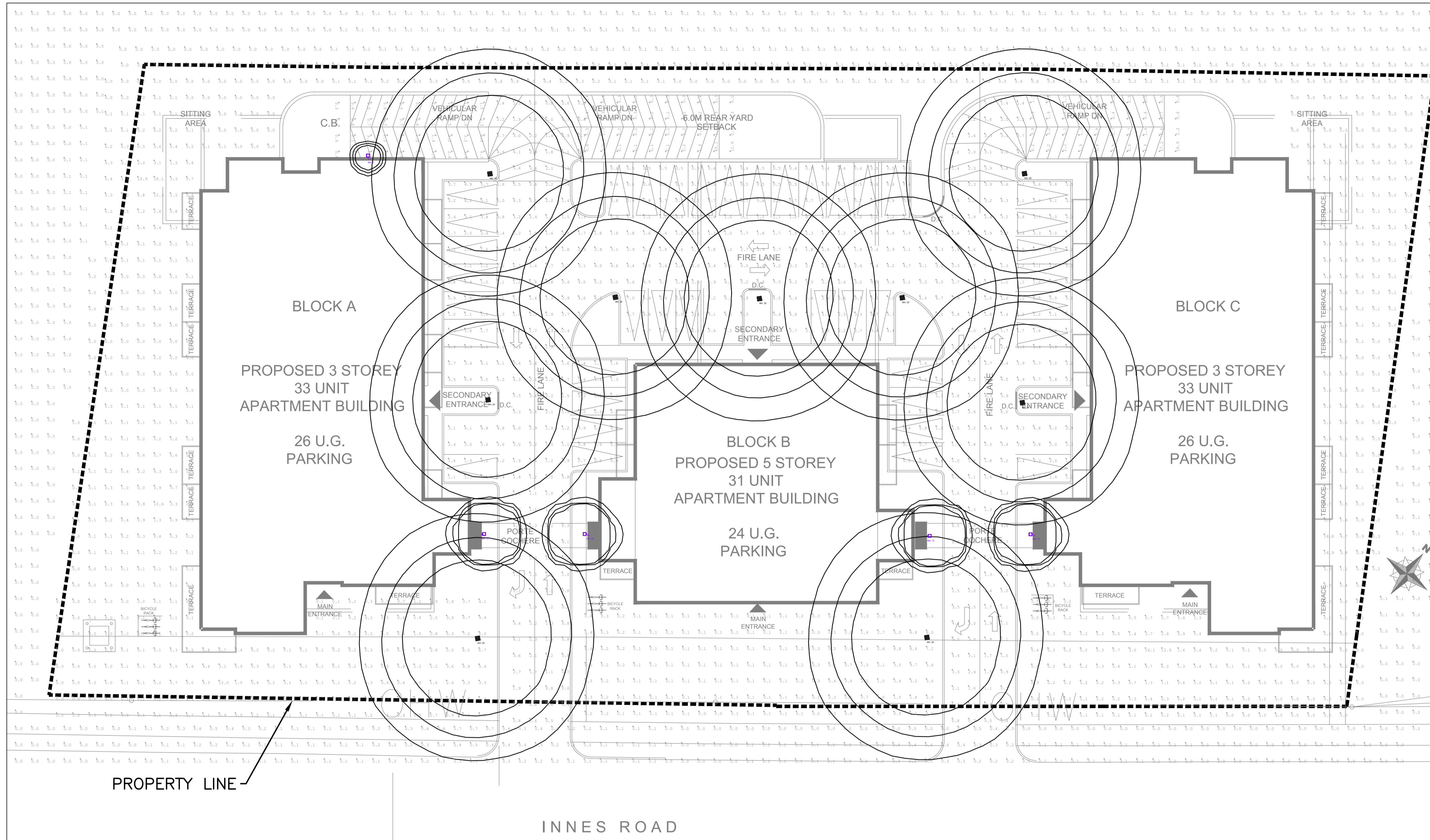


An exact copy of all working documents including, without limitations, the original of the present document or plan is kept on file by J.R.P. Engineering. Any modification carried out to this document or plan or to accompanying documents without written authorization by the engineer is prohibited.

Authorized modifications must be signed and sealed by an engineer and this engineer will be completely responsible for these modifications. J.R.P. Engineering is not and will not be responsible for the consequences of these modifications or for modifications carried out without its consent.



No	DESCRIPTION	DATE
0	ISSUED FOR SITE PLAN	JAN 06 2021

REVISIONS



client:

project:  
 ELECTRICAL  
 PHOTOMETRIC  
 3817-3843 INNES RD,  
 OTTAWA, ONTARIO

drawing title:  
 SITE LIGHTING  
 PHOTOMETRIC

scale:	AS NOTED	drawn by:	C.M.
designed by:	C.M.	reviewed by:	M.G.
approved by:	M.G.	date:	JAN 2021

project no.:	100-2102	drawing no.:	E1
revision:	<0>		of 1

1 SITE PHOTOMETRIC  
 E1 SCALE N.T.S.

Symbol	Qty	Label	Arrangement	LLF	Description	Total Watts	Lum. Lumens
	9	SL2	SINGLE	0.900	Post Top 80W	693	8452
	7	W1	SINGLE	0.900	WLP31-25W	175	3316
	6	BL1	SINGLE	0.900	BL25-NW-G1-5-8-B2	157.2	2539