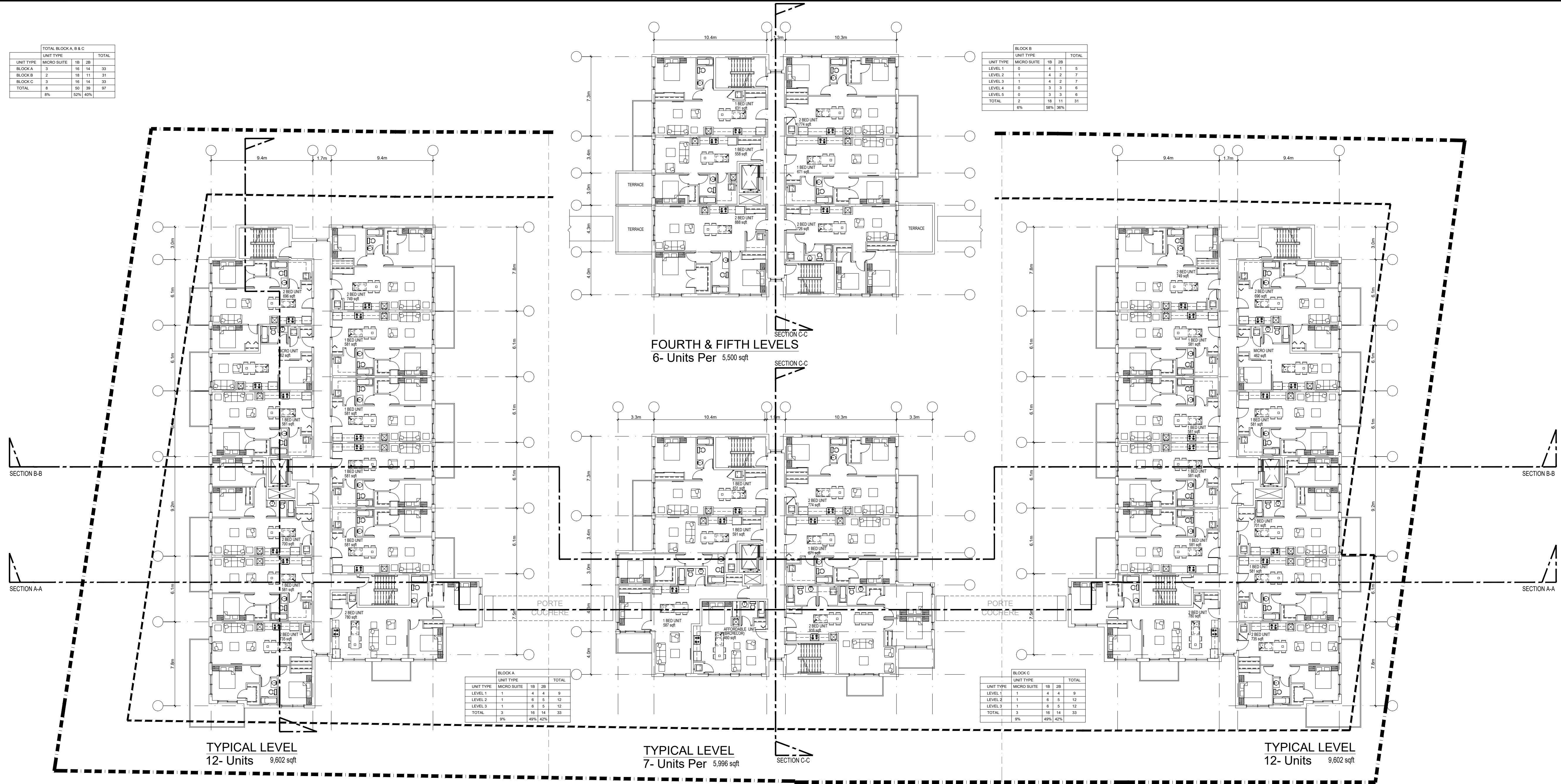


TOTAL BLOCKS A, B & C				
UNIT TYPE	MICRO SUITE	1B	2B	TOTAL
BLOCK A	3	18	14	33
BLOCK B	2	18	11	31
BLOCK C	3	18	14	33
TOTAL	8	54	39	93
	8%	52%	40%	

BLOCK B				
UNIT TYPE	MICRO SUITE	1B	2B	TOTAL
LEVEL 1	0	4	1	5
LEVEL 2	1	4	2	7
LEVEL 3	1	4	2	7
LEVEL 4	0	3	3	6
LEVEL 5	0	3	3	6
LEVEL 2	2	18	11	31
TOTAL	4%	58%	38%	

BLOCK A				
UNIT TYPE	MICRO SUITE	1B	2B	TOTAL
LEVEL 1	1	4	4	9
LEVEL 2	1	6	5	12
LEVEL 3	1	8	5	12
LEVEL 4	0	18	14	32
TOTAL	3	36	28	61
	5%	59%	36%	

BLOCK C				
UNIT TYPE	MICRO SUITE	1B	2B	TOTAL
LEVEL 1	1	4	4	9
LEVEL 2	2	6	5	13
LEVEL 3	1	8	5	14
LEVEL 4	0	18	14	32
TOTAL	4	36	28	62
	6%	58%	36%	



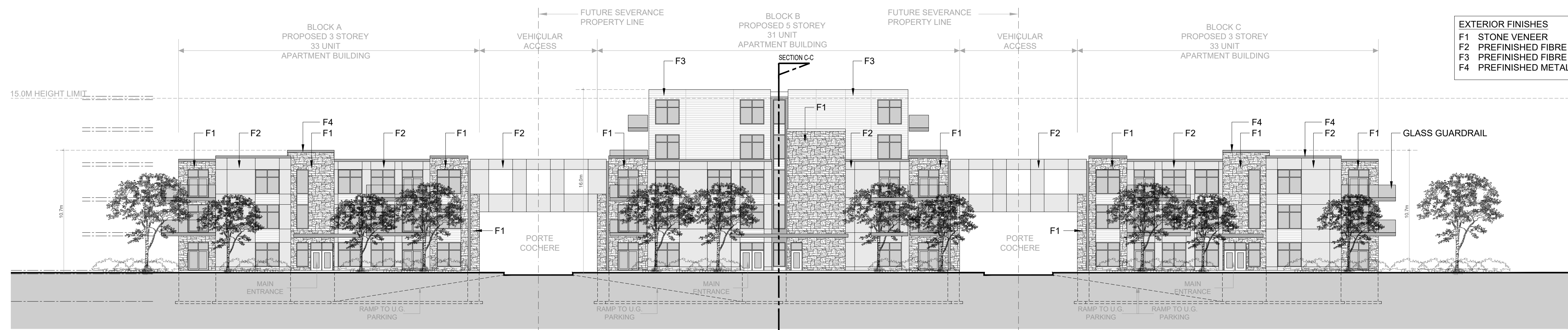
TYPICAL LEVEL
12- Units
9,602 sqft

TYPICAL LEVEL
7- Units Per
5,996 sqft

TYPICAL LEVEL
12- Units
9,602 sqft

EXTERIOR FINISHES

- F1 STONE VENEER
- F2 PREFINISHED FIBRE CEMENT BOARD
- F3 PREFINISHED FIBRE CEMENT PLANKS
- F4 PREFINISHED METAL FLASHING



SOUTH ELEVATION ALONG INNES ROAD

NO.	REVISIONS	BY	DATE
11	FOR REVIEW	PE	APR. 09 2021
10	FOR REVIEW	PE	FEB. 24 2021
09	FOR REVIEW	PE	NOV. 10 2020
08	FOR REVIEW	PE	NOV. 02 2020
07	FOR REVIEW	PE	OCT. 27 2020
06	FOR REVIEW	PE	AUG. 05 2020
05	FOR REVIEW	PE	JUNE 22 2020
04	FOR REVIEW	PE	JUNE 09 2020
03	FOR REVIEW	PE	JUNE 03 2020
02	FOR REVIEW	PE	MAY 28 2020
01	FOR REVIEW	PE	MAY 11 2020

NOT AUTHENTIC UNLESS SIGNED AND DATED



CONSULTING ENGINEERS
STRUCTURAL
MECHANICAL
ELECTRICAL

DESIGNED BY: P.E.
DRAWN BY: P.E.
APPROVED BY: P.E.

PROJECT
**3817-3843 INNES ROAD
ORLEANS**

DRAWING TITLE
**MAIN LEVEL PLANS
AND ELEVATION ALONG
INNES ROAD**

PROJECT NO.
0378
DATE
MAY, 11, 2020

A101