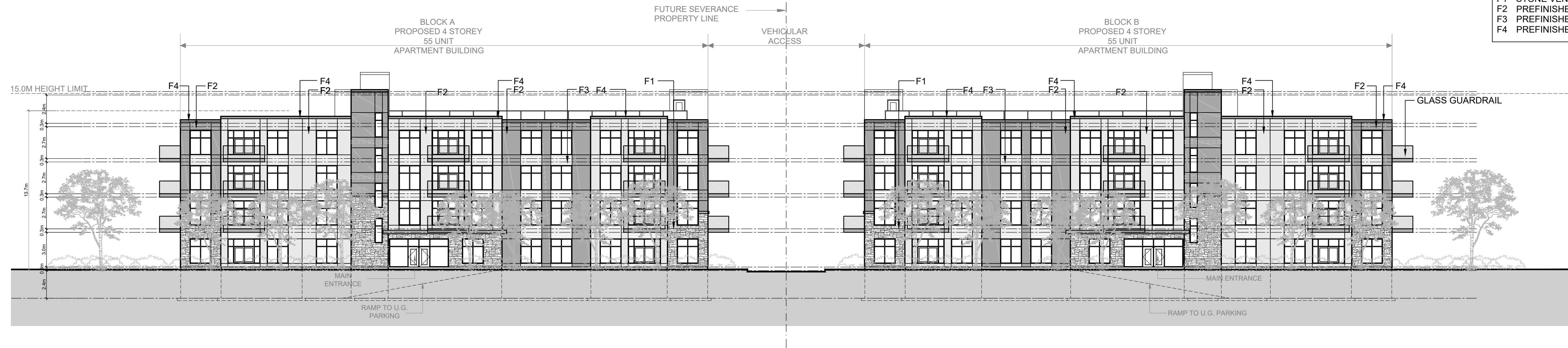
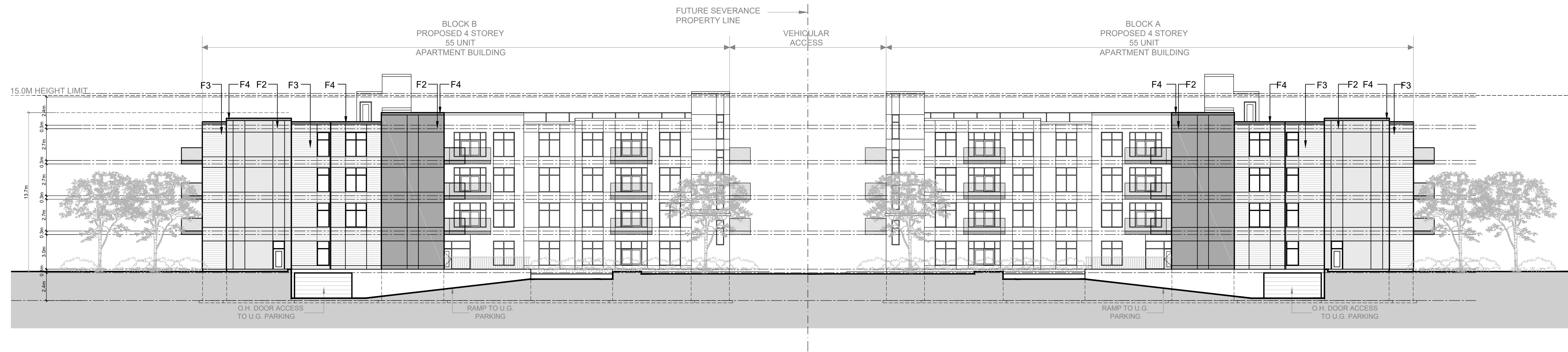


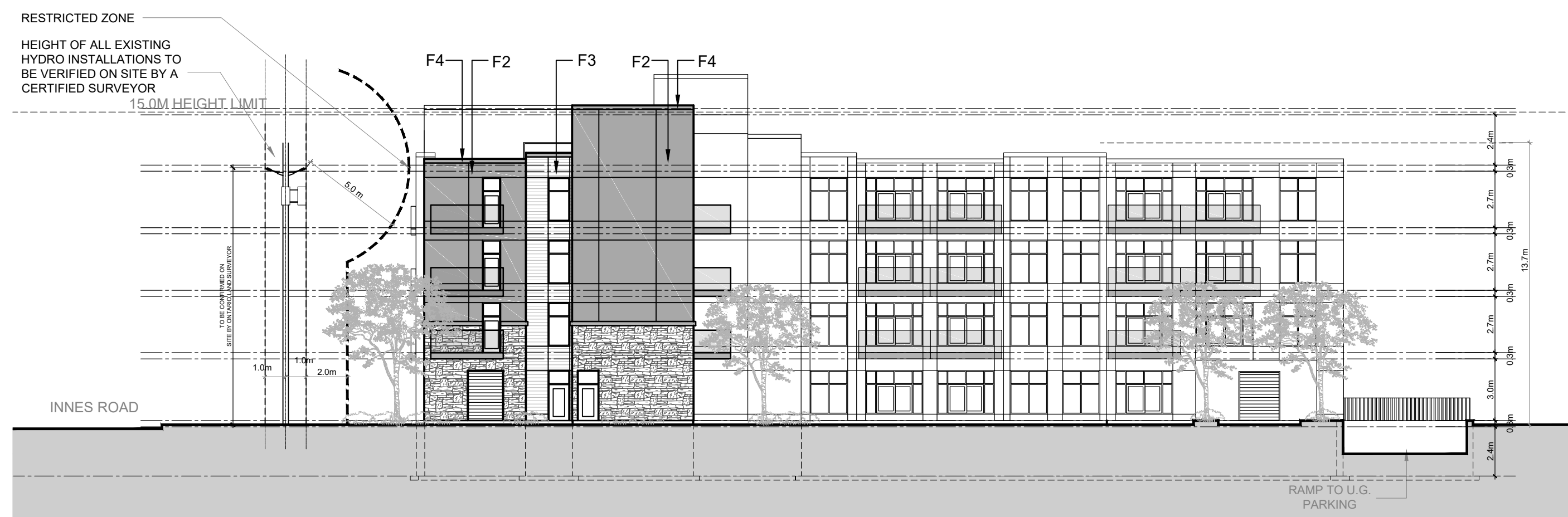
**EXTERIOR FINISHES**  
 F1 STONE VENEER  
 F2 PREFINISHED FIBRE CEMENT BOARD  
 F3 PREFINISHED FIBRE CEMENT PLANKS  
 F4 PREFINISHED METAL FLASHING



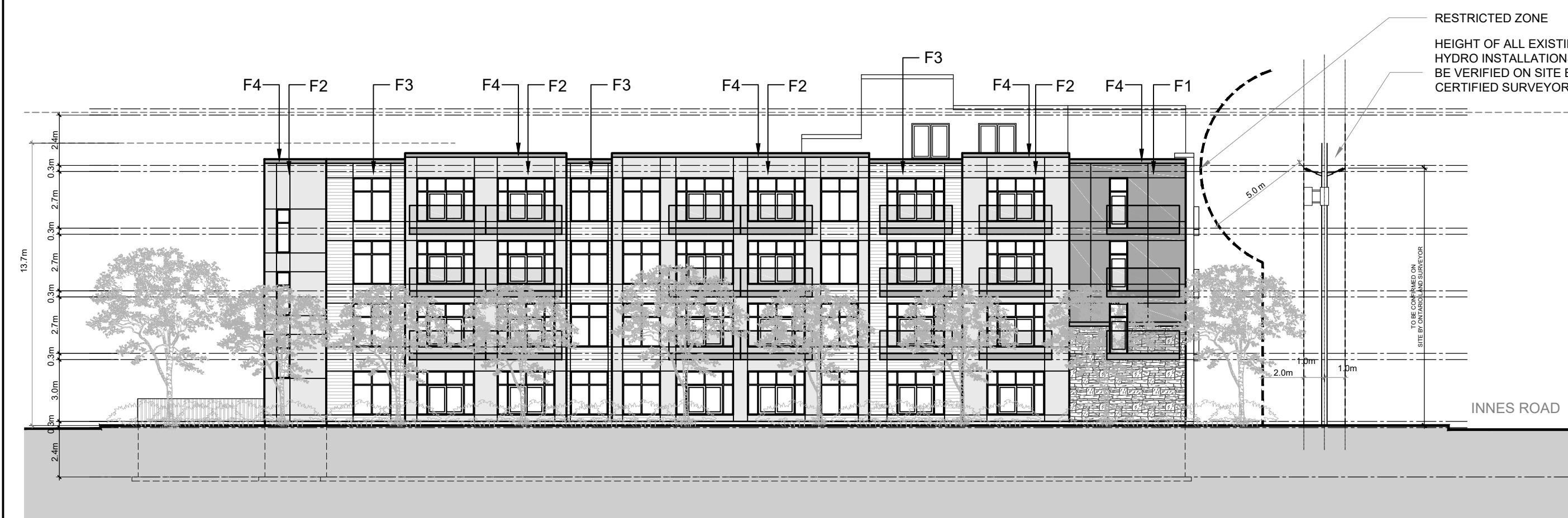
**1 SOUTH ELEVATION ALONG INNES ROAD**  
SCALE: 1:200



**2 NORTH ELEVATION**  
SCALE: 1:200



**3 BLOCK A EAST ELEVATION (BLOCK B MIRRORED)**  
SCALE: 1:200



**4 BLOCK A WEST ELEVATION (BLOCK B MIRRORED)**  
SCALE: 1:200

No.	REVISIONS	BY	DATE
11			
10			
09	FOR REVIEW	PE	APR. 01 2022
08	FOR REVIEW	PE	MAR. 21 2022
07	FOR REVIEW	PE	APR. 09 2021
06	FOR REVIEW	PE	NOV. 10 2020
05	FOR REVIEW	PE	NOV. 02 2020
04	FOR REVIEW	PE	OCT. 27 2020
03	FOR REVIEW	PE	AUG. 05 2020
02	FOR REVIEW	PE	JUNE 22 2020
01	FOR REVIEW	PE	JUNE 09 2020

NOT AUTHENTIC UNLESS SIGNED AND DATED

**D2**  
concepts  
738 RIDGEWOOD AVE. UNIT 201  
OTTAWA, ONTARIO, K1V 6M8

DESIGNED BY: P.E. DRAWN BY: P.E. APPROVED BY: P.E.

PROJECT

3817-3843 INNES ROAD  
ORLEANS

DRAWING TITLE

ELEVATIONS

PROJECT NO.

0378

DATE

APRIL, 09, 2020

**A200**

FILE # D07-12-20-0164  
# 18285