

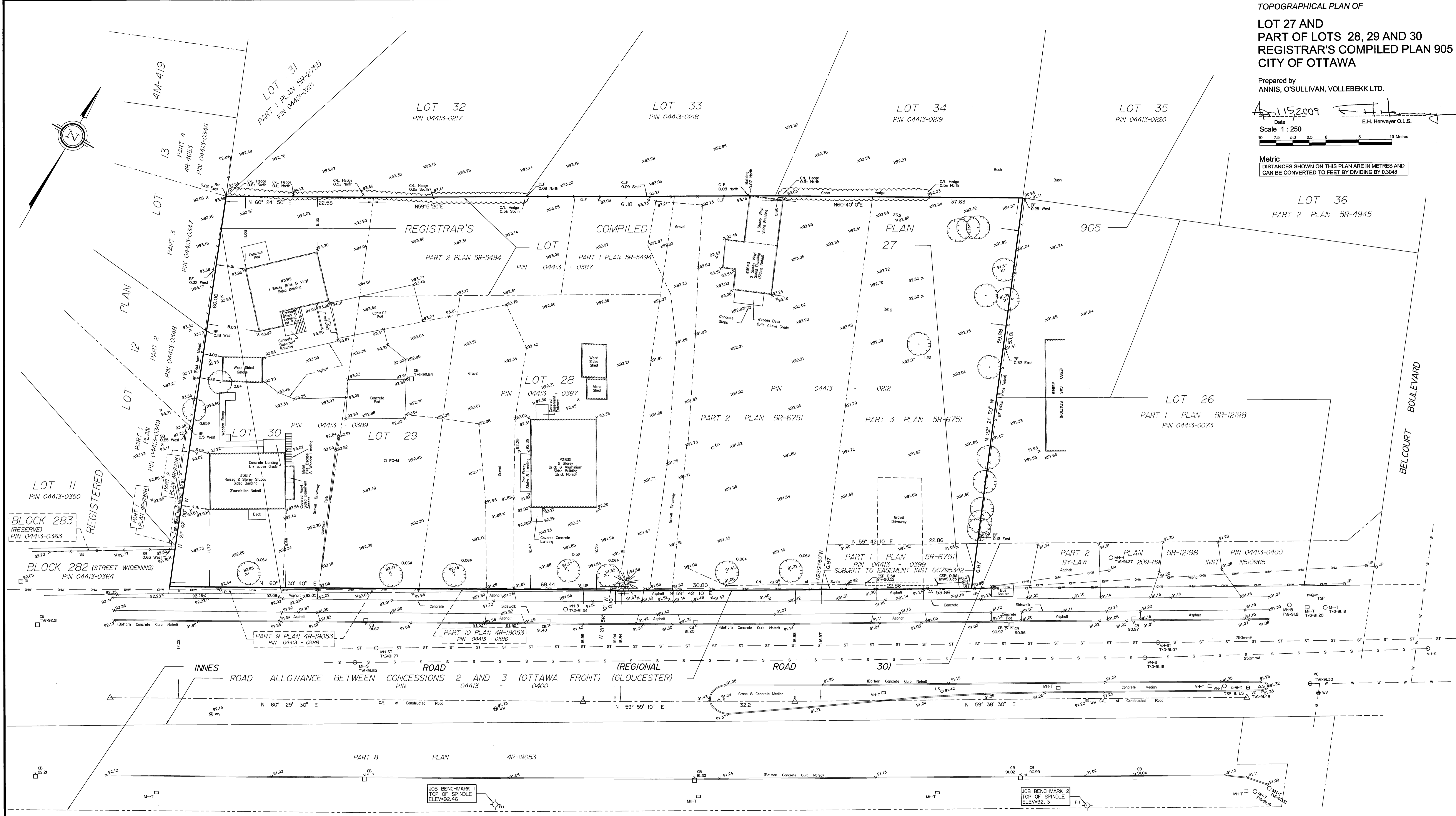
**LOT 27 AND
PART OF LOTS 28, 29 AND 30
REGISTRAR'S COMPILED PLAN 905
CITY OF OTTAWA**

Prepared by
ANNIS, O'SULLIVAN, VOLLEBEKK LTD.

Date: 11/5/2009
E.H. Harvey O.L.S.

Scale 1 : 250

Metric
DISTANCES SHOWN ON THIS PLAN ARE IN METRES AND
CAN BE CONVERTED TO FEET BY DIVIDING BY 0.3048



Notes & Legend

- | | | |
|---|--|--|
| <ul style="list-style-type: none"> ○ Deciduous Tree (0.10 to 0.20 unless otherwise noted.) ● Coniferous Tree ⊕ Fire Hydrant ⊕ Water Valve ⊕ MH-ST Maintenance Hole (Storm Sewer) ⊕ MH-S Maintenance Hole (Sanitary) ⊕ MH-B Maintenance Hole (Bell Telephone) ⊕ MH-T Maintenance Hole (Traffic) ⊕ MH-H Maintenance Hole (Hydro) | <ul style="list-style-type: none"> ⊕ Valve Chamber (Watermain) ⊕ Catch Basin ⊕ Ditch Inlet ⊕ Traffic Signal Post ⊕ Sign ⊕ Chain Link Fence ⊕ Board Fence ⊕ Sound Barrier (Wooden Panel & Metal Post) ⊕ Metal Pole ⊕ Utility Pole ⊕ Anchor | <ul style="list-style-type: none"> ○ LS Light Standard ⊕ Diameter ⊕ Location of Elevations T/G Top of Grate C/L Centreline — Property Line — Overhead Wires — Underground Storm Sewer — Underground Sanitary Sewer — Underground Water |
|---|--|--|

ELEVATION NOTES

- Elevations shown are referred to geodetic datum.
- It is the responsibility of the user of this information to verify that the job benchmark has not been altered or disturbed and that its relative elevation and description agrees with the information shown on this drawing.

UTILITY NOTES

- This drawing cannot be accepted as acknowledging all of the utilities and it will be the responsibility of the user to contact the respective utility authorities for confirmation.
- Only visible surface utilities were located.
- A field location of underground plant by the pertinent utility authority is mandatory before any work involving breaking ground, probing, excavating etc.

SITE AREA = 7267 m²

BOUNDARY INFORMATION COMPILED FROM SURVEY RECORDS.

ANNIS, O'SULLIVAN, VOLLEBEKK LTD.
14 Concourse Gate, Suite 500
Nepean, Ont. K2E 7S6
Phone: (613) 727-0850 / Fax: (613) 727-1079
Email: Home@annis.com
Ontario Land Surveyors