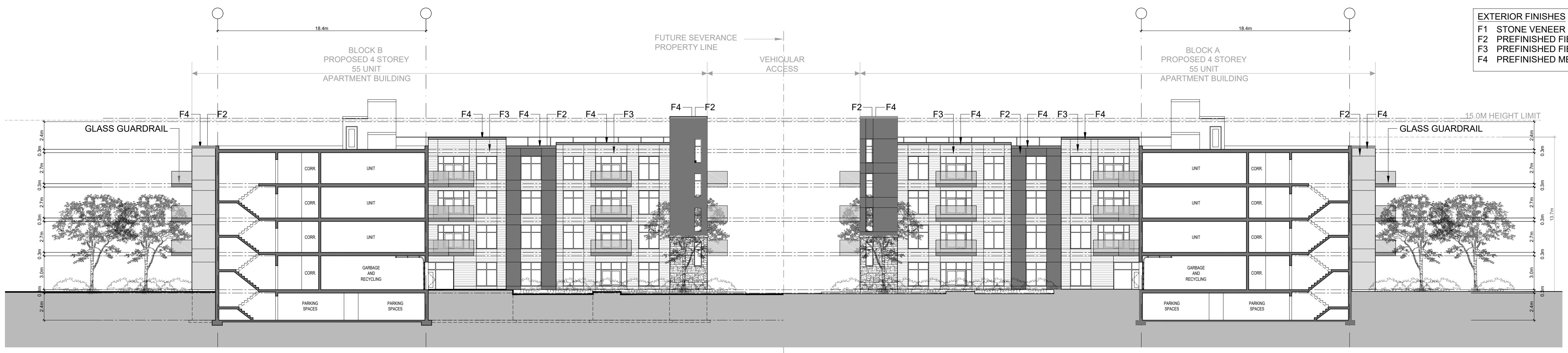
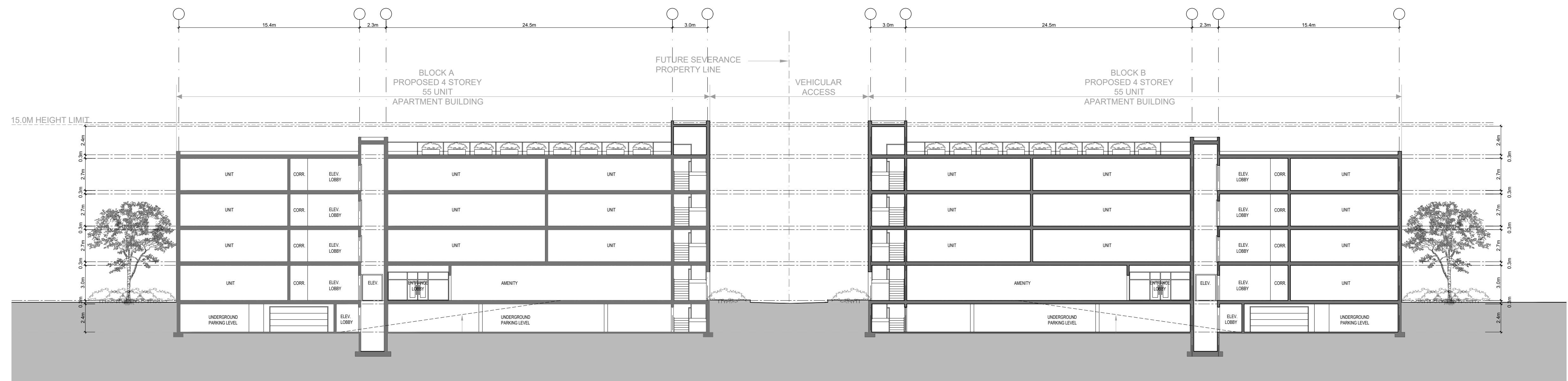


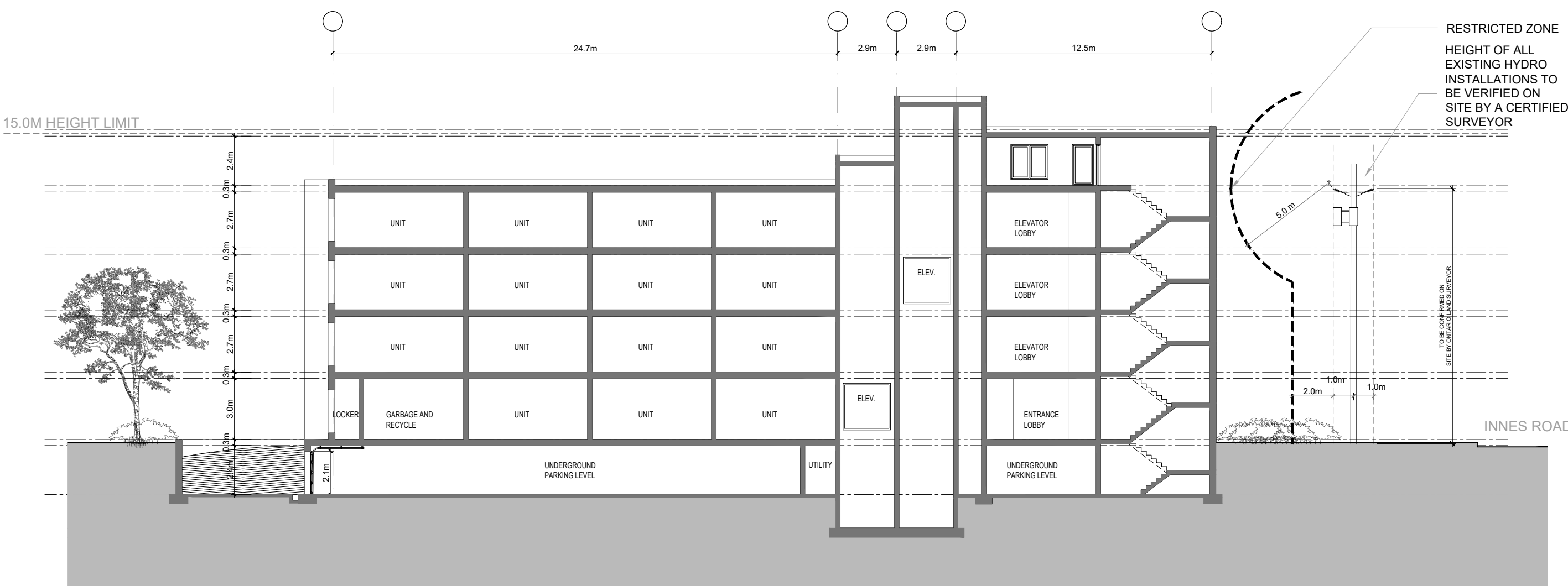
**EXTERIOR FINISHES**  
 F1 STONE VENEER  
 F2 PREFINISHED FIBRE CEMENT BOARD  
 F3 PREFINISHED FIBRE CEMENT PLANKS  
 F4 PREFINISHED METAL FLASHING



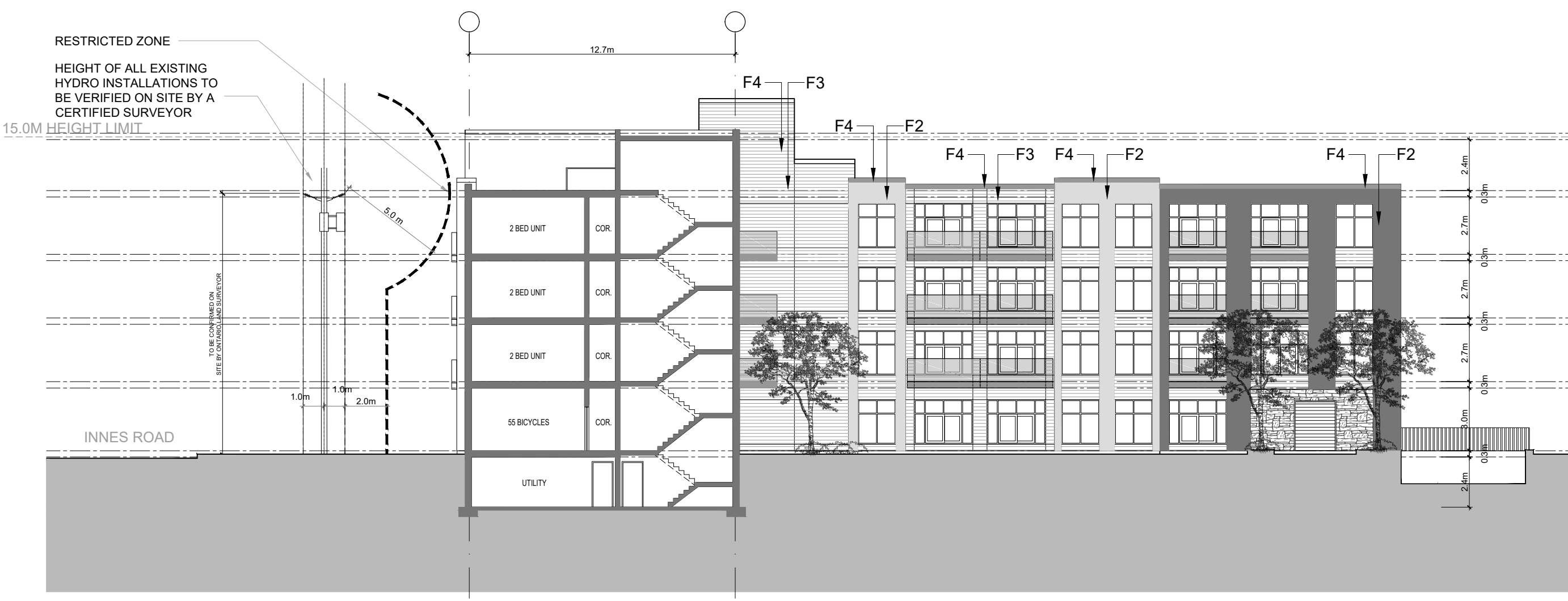
**1 BUILDING SECTION**  
 SCALE = 1 : 200



**2 BUILDING SECTION**  
 SCALE = 1 : 200



**3 BUILDING SECTION**  
 SCALE = 1 : 200



**4 BUILDING SECTION**  
 SCALE = 1 : 200

No.	REVISIONS	BY	DATE
11			
10			
09			
08			
07			
06	FOR REVIEW	PE	APR. 01 2022
05	FOR REVIEW	PE	MAR. 21 2022
04	FOR REVIEW	PE	APR. 09 2021
03	FOR REVIEW	PE	NOV. 10 2020
02	FOR REVIEW	PE	NOV. 02 2020
01	FOR REVIEW	PE	OCT. 29 2020

NOT AUTHENTIC UNLESS SIGNED AND DATED

**P<sup>2</sup> concepts**  
CONSULTING ENGINEERS

CONSULTING ENGINEERS  
 STRUCTURAL  
 MECHANICAL  
 ELECTRICAL

DESIGNED BY: P.E.  
 DRAWN BY: H.N.  
 APPROVED BY: P.E.

PROJECT  
**3817-3843 INNES ROAD ORLEANS**

DRAWING TITLE  
**BUILDING SECTIONS**

PROJECT NO. 0378  
 DATE OCT. 29, 2020

**A103**