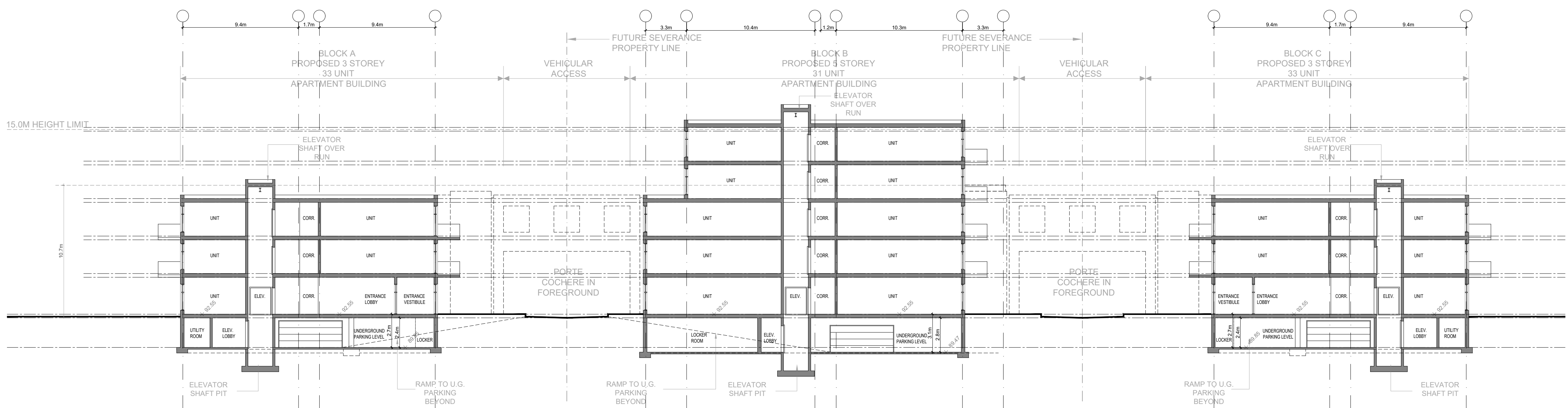
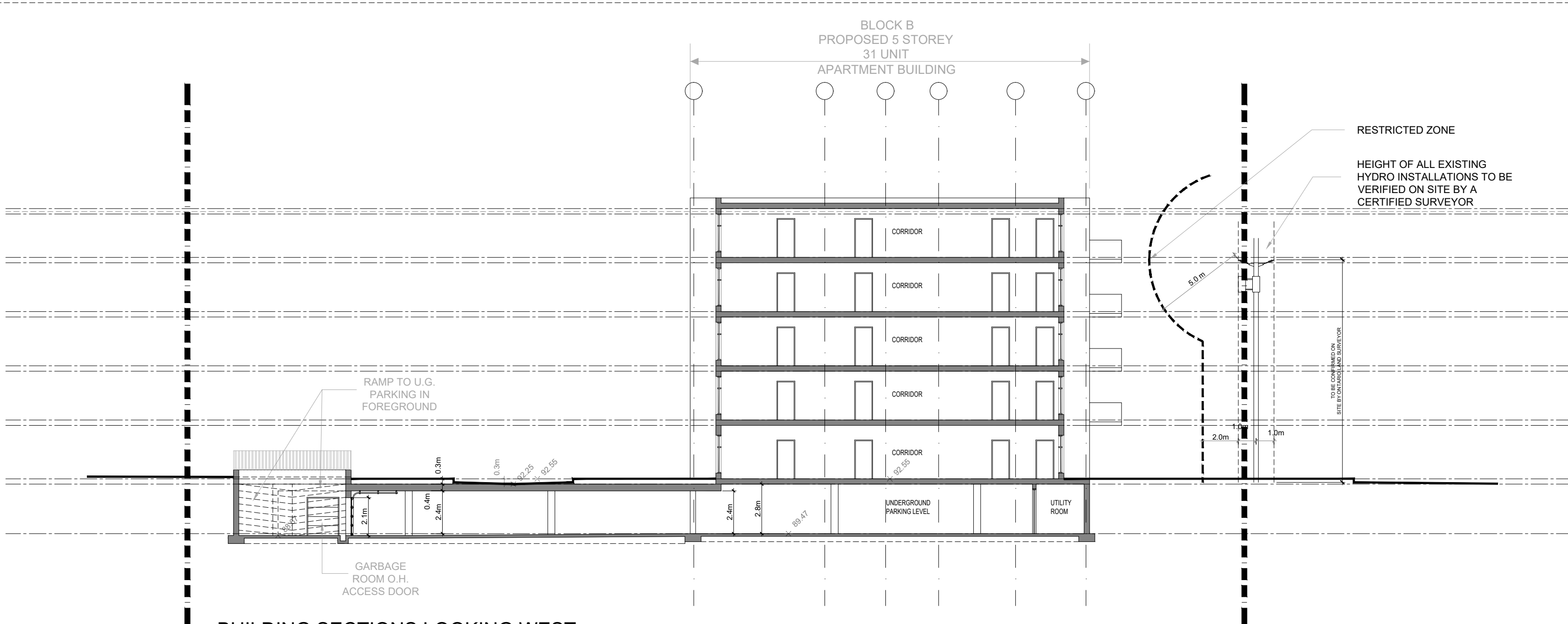


**BUILDING SECTION THROUGH PORTECOCHERES LOOKING NORTH**



**BUILDING SECTIONS LOOKING NORTH**



**BUILDING SECTIONS LOOKING WEST**

11			
10			
09			
08			
07			
06			
05			
04	FOR REVIEW	PE	APR. 09 2021
03	FOR REVIEW	PE	NOV. 10 2020
02	FOR REVIEW	PE	NOV. 02 2020
01	FOR REVIEW	PE	OCT. 29 2020
No.	REVISIONS	BY	DATE

NOT AUTHENTIC UNLESS SIGNED AND DATED

**P<sup>2</sup> concepts**  
CONSULTING ENGINEERS  
 700 BROADVIEW AVE. SUITE 201  
 OAKVILLE, ONTARIO, L7V 4K6

CONSULTING ENGINEERS  
 STRUCTURAL  
 MECHANICAL  
 ELECTRICAL

DESIGNED BY: P.E.      DRAWN BY: P.E.      APPROVED BY: P.E.

PROJECT  
**3817-3843 INNES ROAD ORLEANS**

DRAWING TITLE  
**BUILDING SECTIONS**

PROJECT NO.  
 0378  
 DATE  
 OCT. 29, 2020

**A103**

FILE # D07-12-20-0164