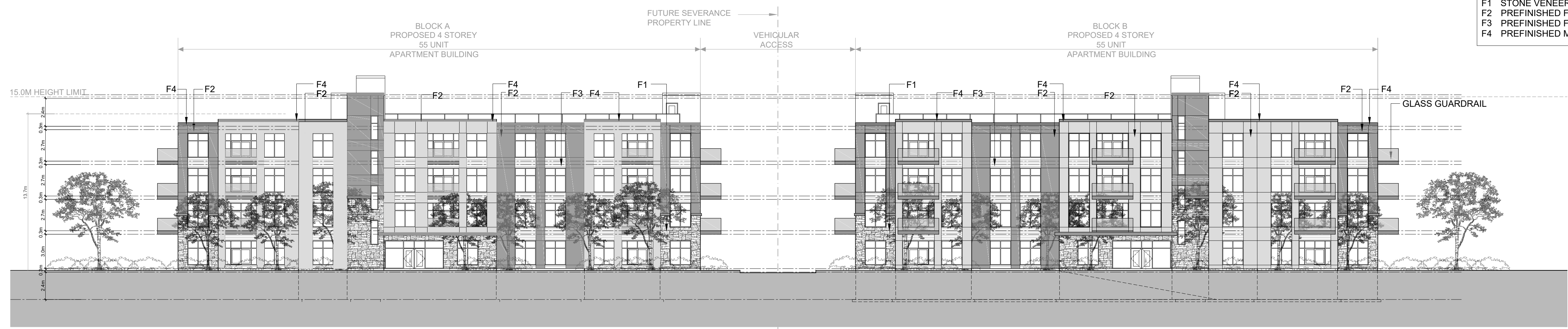


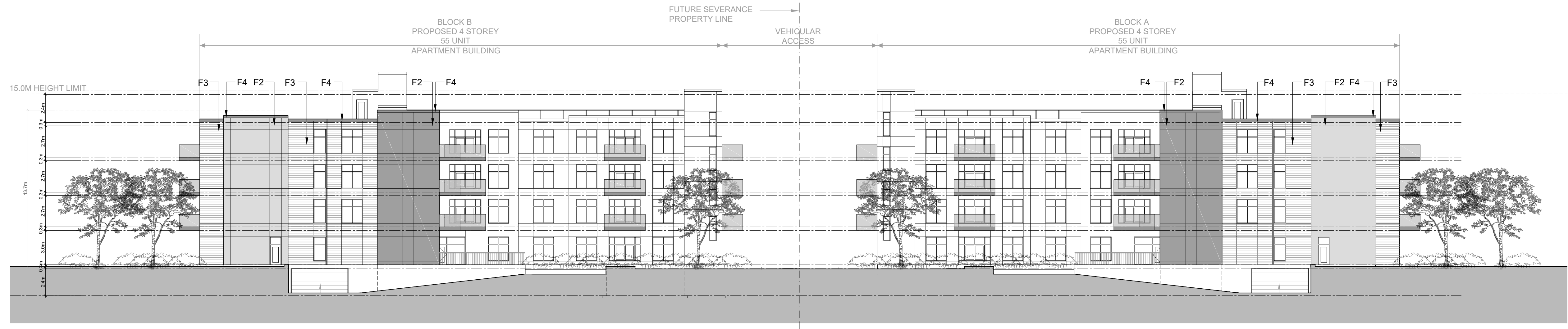
CLIENT:



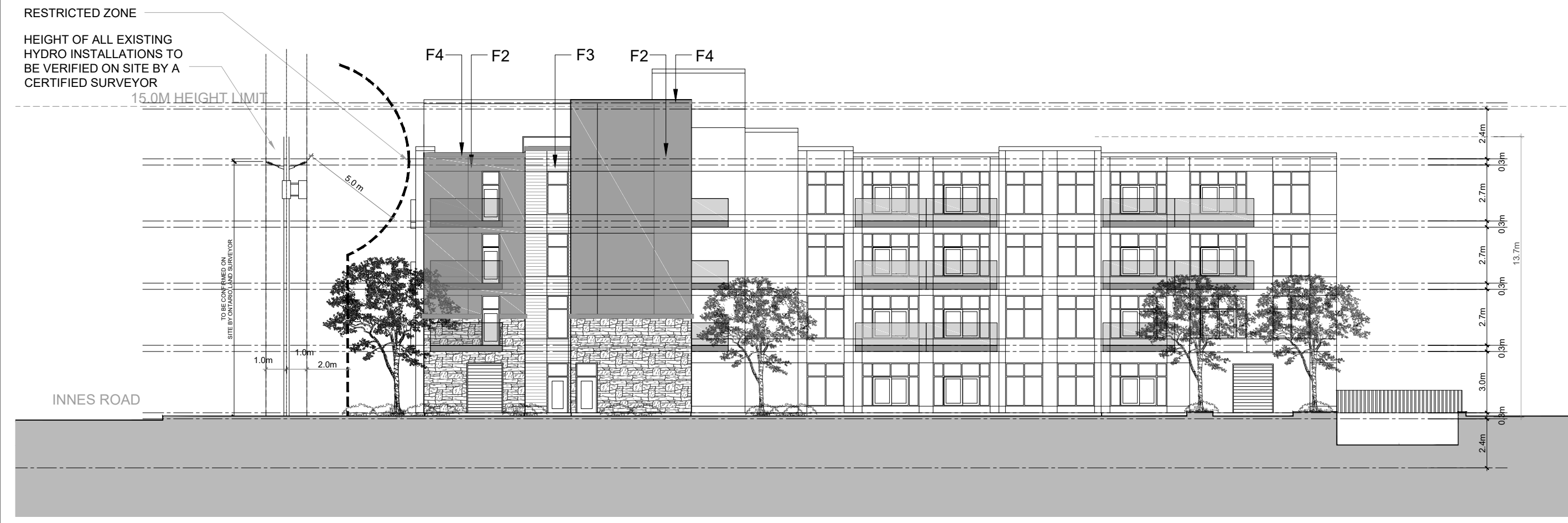
- EXTERIOR FINISHES**
- F1 STONE VENEER
  - F2 PREFINISHED FIBRE CEMENT BOARD
  - F3 PREFINISHED FIBRE CEMENT PLANKS
  - F4 PREFINISHED METAL FLASHING



**1 SOUTH ELEVATION ALONG INNES ROAD**  
SCALE = 1: 200



**2 NORTH ELEVATION**  
SCALE = 1: 200



**3 BLOCK A EAST ELEVATION (BLOCK B MIRRORED)**  
SCALE = 1: 200



**4 BLOCK A WEST ELEVATION (BLOCK B MIRRORED)**  
SCALE = 1: 200

No.	REVISIONS	BY	DATE
11			
10			
09	FOR REVIEW	PE	APR. 01 2022
08	FOR REVIEW	PE	MAR. 21 2022
07	FOR REVIEW	PE	APR. 09 2021
06	FOR REVIEW	PE	NOV. 10 2020
05	FOR REVIEW	PE	NOV. 02 2020
04	FOR REVIEW	PE	OCT. 27 2020
03	FOR REVIEW	PE	AUG. 05 2020
02	FOR REVIEW	PE	JUNE 22 2020
01	FOR REVIEW	PE	JUNE 09 2020

NOT AUTHENTIC UNLESS SIGNED AND DATED

**P<sup>2</sup> concepts**  
CONSULTING ENGINEERS

STRUCTURAL  
MECHANICAL  
ELECTRICAL

DESIGNED BY: P.E.  
DRAWN BY: H.N.  
APPROVED BY: P.E.

PROJECT  
**3817-3843 INNES ROAD  
ORLEANS**

DRAWING TITLE  
**ELEVATIONS**

PROJECT NO.  
0378  
DATE  
JUNE, 09, 2020

**A102**

FILE # D07-12-20-0164